

# B8LAS

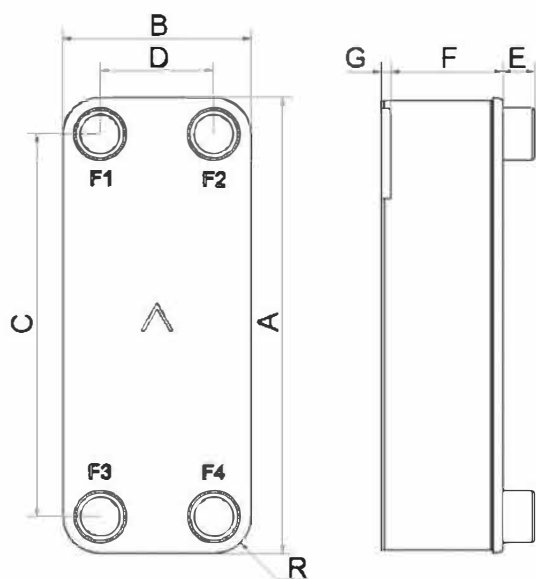
Le compact B8LAS est un produit conçu pour associer des performances thermiques élevées à de faibles pertes de charges. Grâce à sa géométrie de plaques dotée de la technologie AsyMatrix®, cet échangeur offre des solutions efficaces et polyvalentes pour les pompes à chaleur haute performance et les applications de réfrigération.



## Spécifications de base

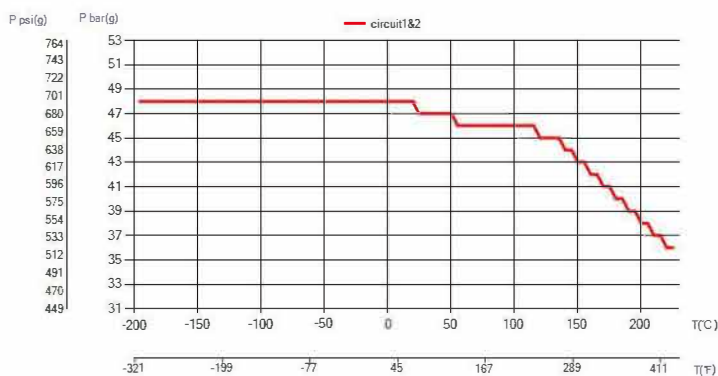
|                              |   |
|------------------------------|---|
| Nombre de plaques max. (NoP) | 70  |
| Débit volumétrique max.      | 4 m <sup>3</sup> /h (17.61 gpm)                               |
| Volume du canal              | 0.0204/0.024 dm <sup>3</sup> (0.0007/0.0008 ft <sup>3</sup> ) |
| Matières                     | Plaques en acier inoxydable 316, brasage cuivre               |
| Poids sans les connexions    | 0.84+(0.059*NoP) kg<br>1.85+(0.130*NoP) lb                    |

## Les dimensions standard



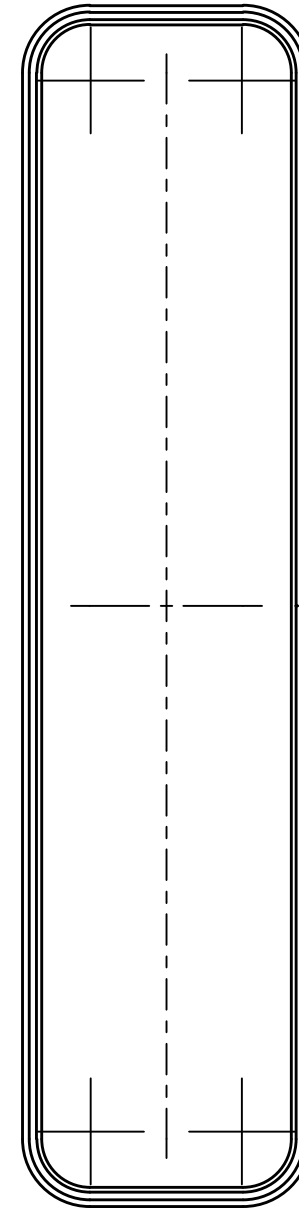
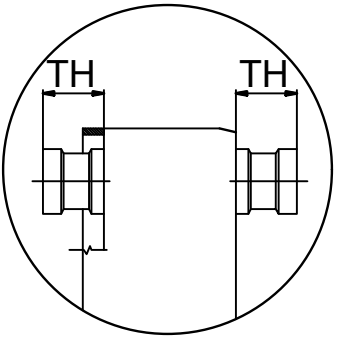
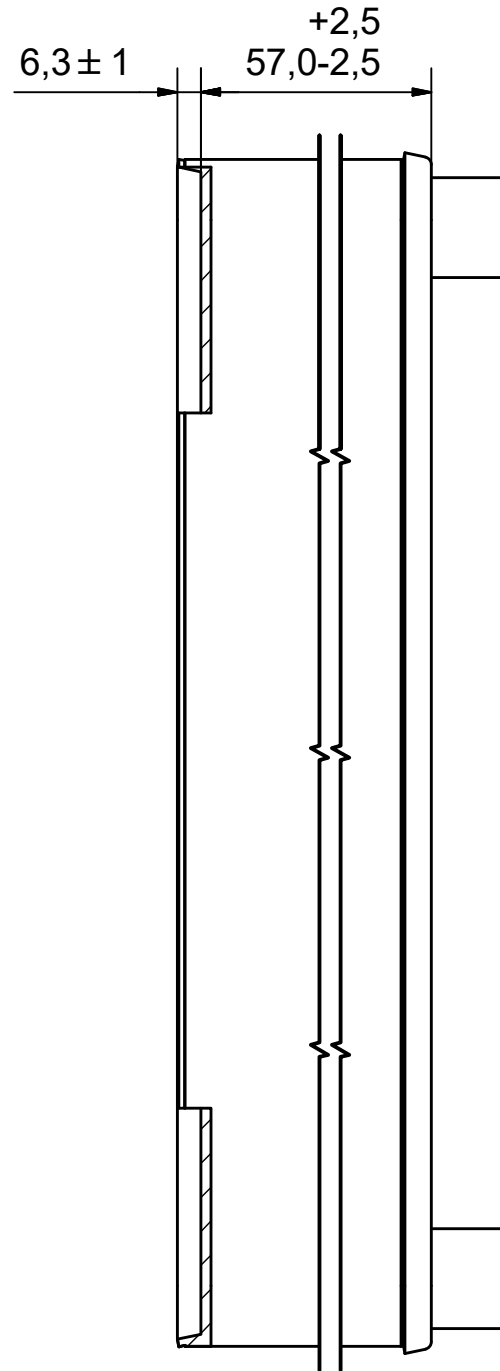
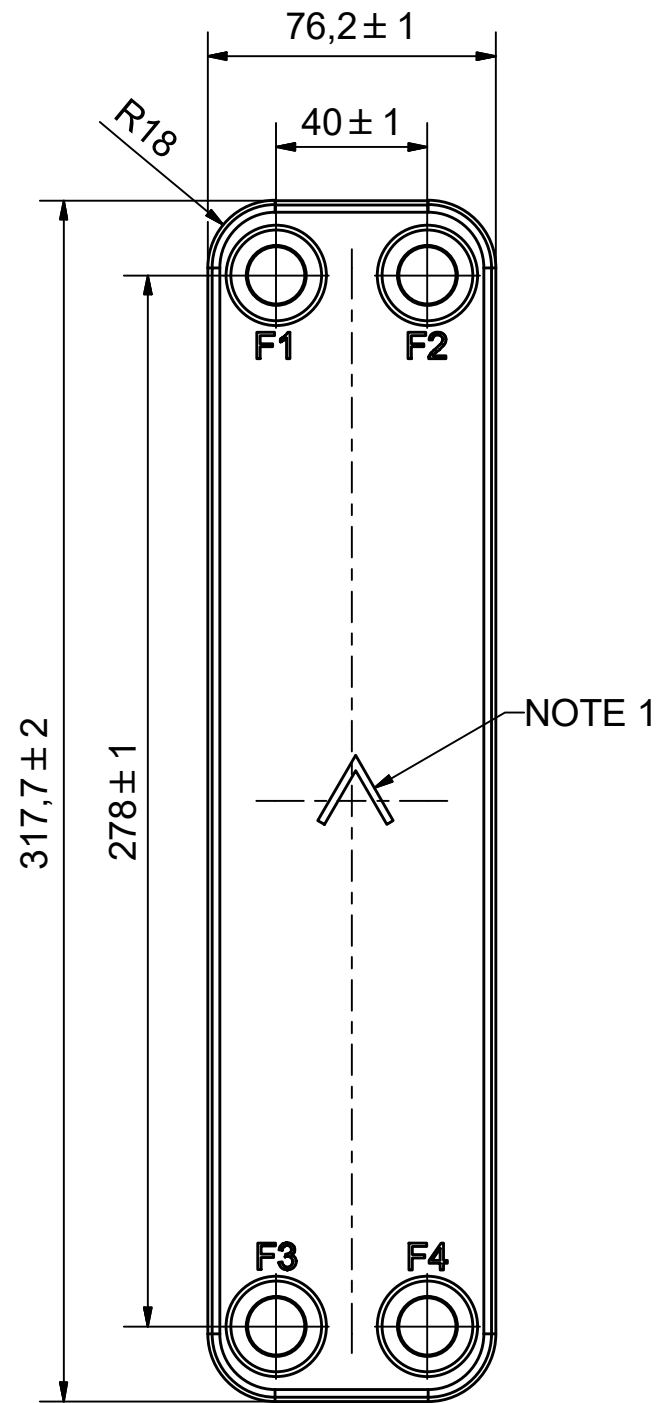
| #   | MM              | IN              |
|-----|-----------------|-----------------|
| A   | 317.70          | 12.51           |
| B   | 76.20           | 3               |
| C   | 278             | 10.94           |
| D   | 40              | 1.57            |
| F   | 4.00+1.32*(NoP) | 0.16+0.05*(NoP) |
| G   | 6.30            | 0.25            |
| R   | 18              | 0.71            |
| E_1 | 20              | 0.79            |

## PED pression / température



# AXINTRA

ÉCHANGEURS THERMIQUES



NOTE 1 ALTERNATE MARKING: STICKER OR STAMP

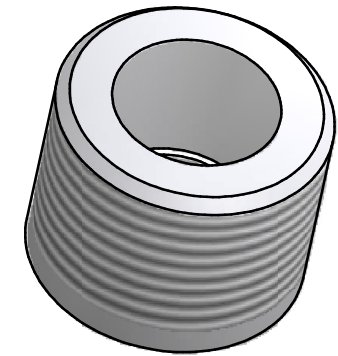
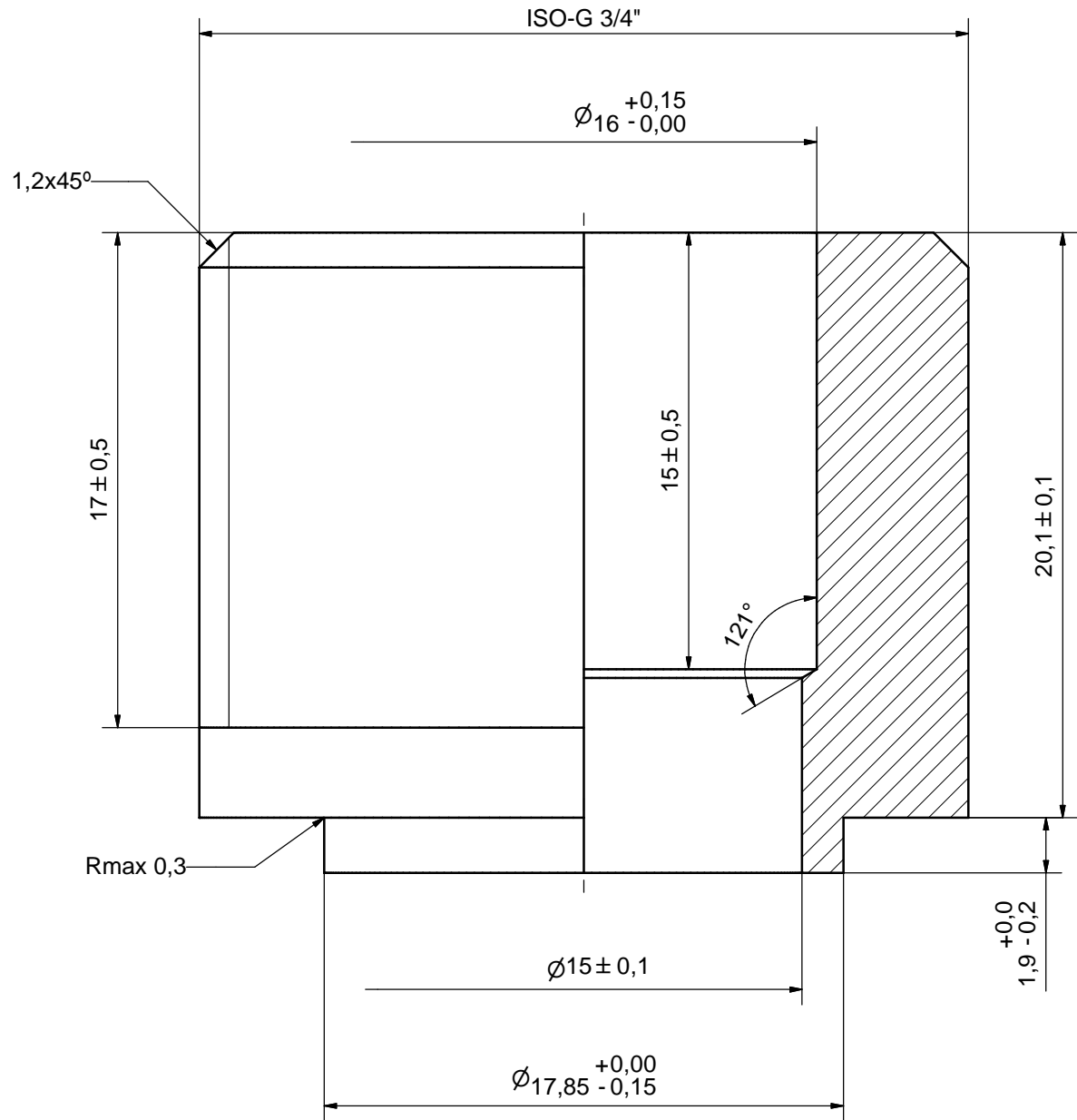
**AXINTRA**  
ÉCHANGEURS THERMIQUES

|    |       |                                   |          |
|----|-------|-----------------------------------|----------|
| F4 | 32835 | ISO-G 3/4" & SOLDER 16, TH = 20,1 | CD000859 |
| F3 | 32835 | ISO-G 3/4" & SOLDER 16, TH = 20,1 | CD000859 |
| F2 | 32835 | ISO-G 3/4" & SOLDER 16, TH = 20,1 | CD000859 |
| F1 | 32835 | ISO-G 3/4" & SOLDER 16, TH = 20,1 | CD000859 |

| Pos | Article No | Title / Denomination, code, material, dimension etc | Drawing No./ref | Pos | Article No | Title / Denomination, code, material, dimension etc | Drawing No./ref |
|-----|------------|---|-----------------|-----|------------|---|-----------------|
|-----|------------|---|-----------------|-----|------------|---|-----------------|

|                              |  |                       |            |
|------------------------------|--|-----------------------|------------|
| Title                        |  | <b>B8LASH/1P-SC-M</b> |            |
|                              |  | Created Date          | 2019-01-21 |
|                              |  | Created By            | AU         |
| Article/Configuration number |  | 16435-040             |            |
| Drawing number               |  | AU00452892            |            |

| Rev No. | Alteration             | Date       | Checked | Approved |
|---------|------------------------|------------|---------|----------|
| 1       | CHANGED INNER DIAMETER | 2007/09/17 | ANL     | PDM      |



ACCORDING TO MQS  
MATERIAL

| Drawn  | Checked | Approved       | Created Date | General geometrical tolerancing ISO 2768 | General surface finish $R_a$ | Scale |
|--|---------|----------------|--------------|--|------------------------------|-------|
| ANL  | PDM     | PDM            | 2007/04/25   | m  | 3.2                          | 5:1   |
| <b>SUPER</b><br>Title: <b>ISO-G 3/4" &amp; SOLDER 16</b> |         |                |              |  |                              |       |
| Article number   |         | Drawing number |              | Revision                                 |                              | Sheet |
| -  |         | CD000859       |              | 1  |                              | 1 (1) |

© Company Confidential, Property of SWEP International AB

**AXINTRA**  
ÉCHANGEURS THERMIQUES

