

B15T

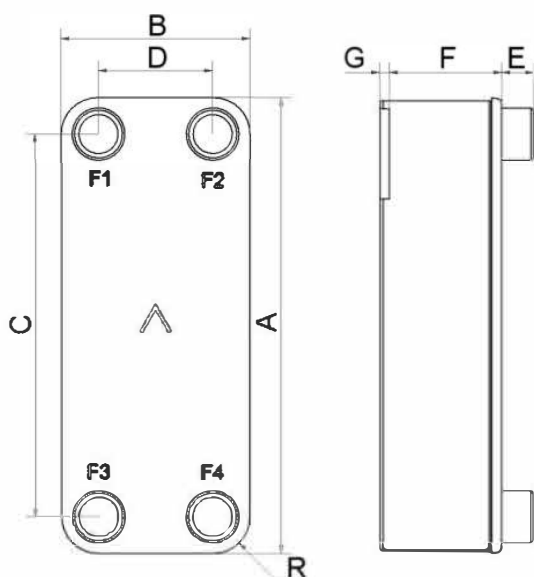
Très performant, le B15T a été développé pour offrir une efficacité thermique maximale. La précision de nos échangeurs autorise un fonctionnement efficace même avec des pincements extrêmement faibles. Ce produit est donc un choix évident pour les applications exigeant un flux thermique élevé, ainsi que pour un meilleur rendement énergétique.



Spécifications de base

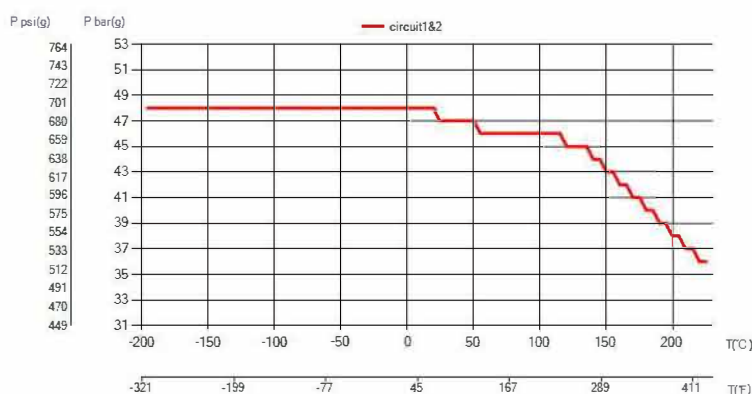
| | |
|------------------------------|--|
| Nombre de plaques max. (NoP) | 60 |
| Débit volumétrique max. | 4 m ³ /h (17.61 gpm) |
| Volume du canal | 0.063/0.063 dm ³ (0.0022/0.0022 ft ³) |
| Matières | Plaques en acier inoxydable 316, brasage cuivre |
| Poids sans les connexions | 1.25+(0.104*NoP) kg 2.76+(0.229*NoP) lb |

Les dimensions standard



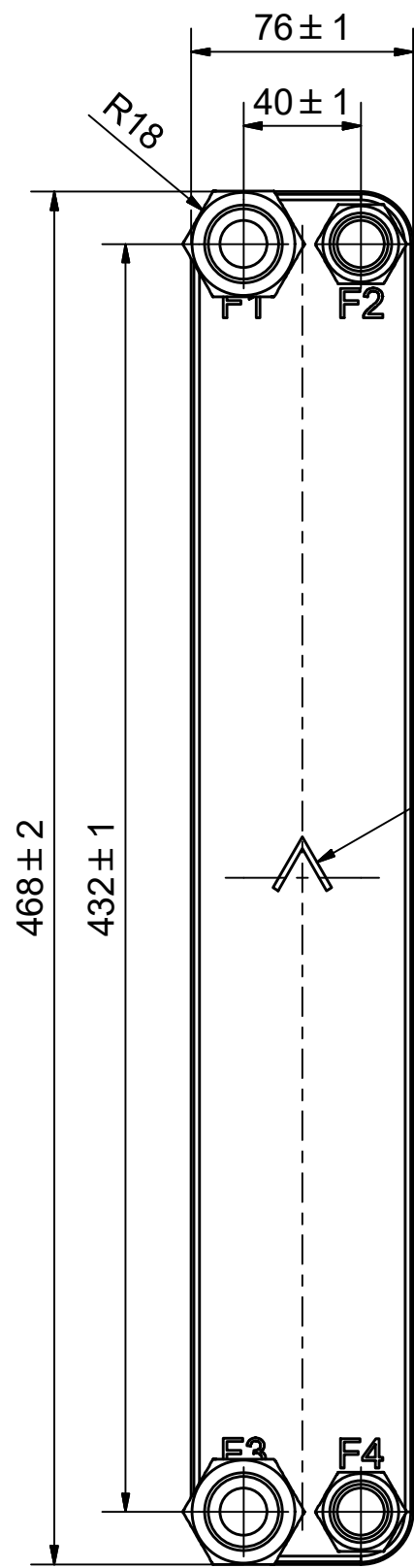
| # | MM | IN |
|-----|-----------------|-----------------|
| A | 468 | 18.43 |
| B | 76 | 2.99 |
| C | 432 | 17.01 |
| D | 40 | 1.57 |
| F | 4.00+2.24*(NoP) | 0.16+0.09*(NoP) |
| G | 7 | 0.28 |
| R | 18 | 0.71 |
| E_1 | 20 | 0.79 |

PED pression / température

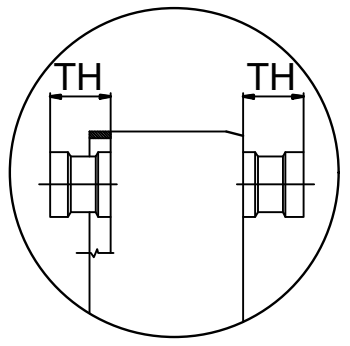
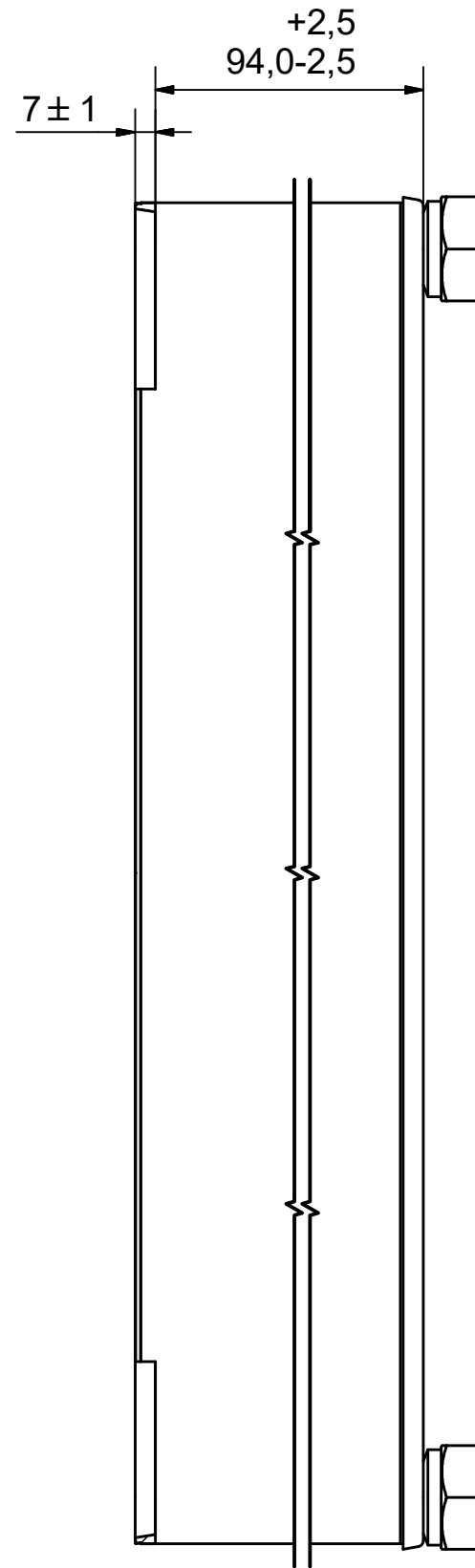


AXINTRA

ÉCHANGEURS THERMIQUES



NOTE 1




AXINTRA

ÉCHANGEURS THERMIQUES

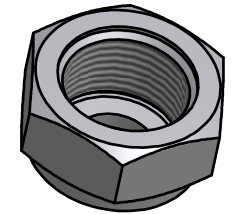
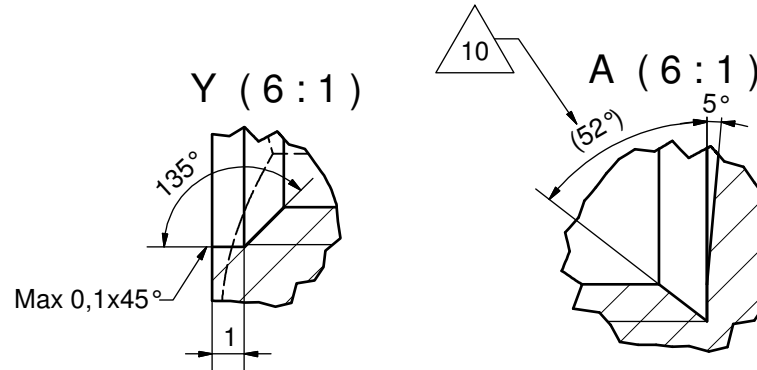
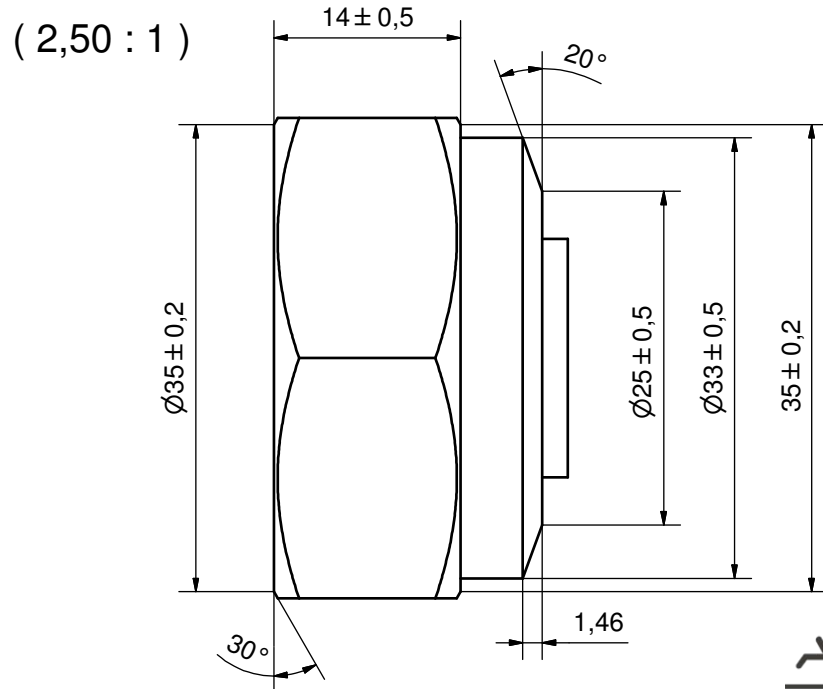
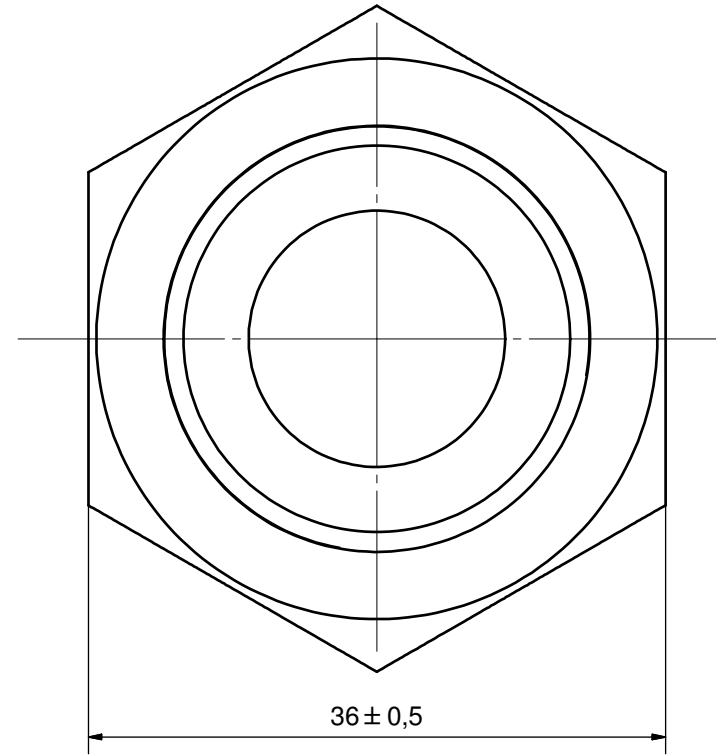
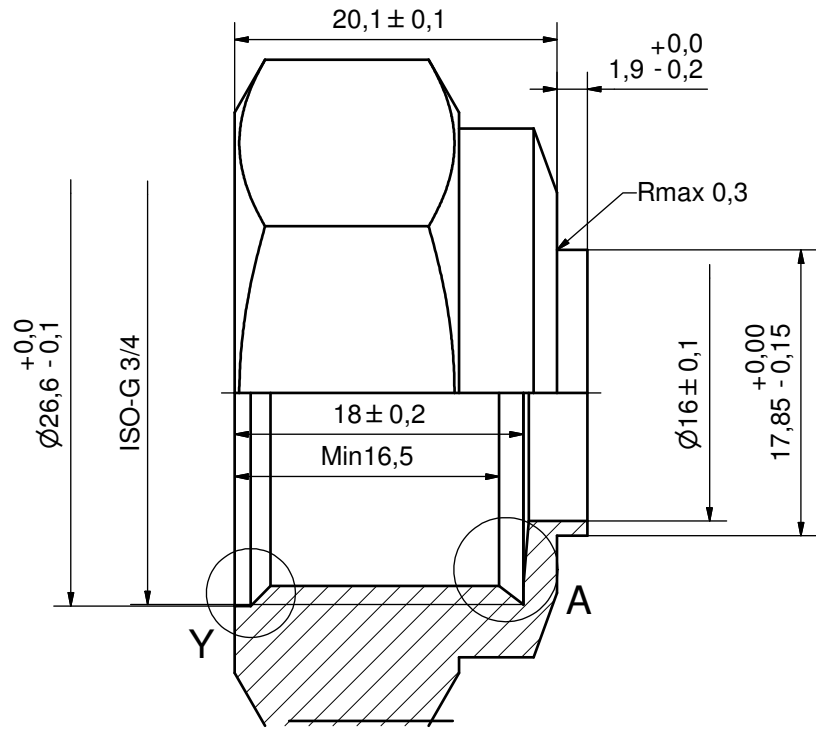
| | | | |
|----|-------|------------------------------|----------|
| F4 | 45411 | ISO-G 1/2 INT HEX, TH = 20,1 | CD000005 |
| F3 | 45429 | ISO-G 3/4, TH = 20,1 | CD000007 |
| F2 | 45411 | ISO-G 1/2 INT HEX, TH = 20,1 | CD000005 |
| F1 | 45429 | ISO-G 3/4, TH = 20,1 | CD000007 |

NOTE 1 ALTERNATE MARKING: STICKER OR STAMP

| Pos | Article No | Title / Denomination, code, material, dimension etc | Drawing No./ref | Pos | Article No | Title / Denomination, code, material, dimension etc | Drawing No./ref |
|-----|------------|---|-----------------|-----|------------|---|-----------------|
|-----|------------|---|-----------------|-----|------------|---|-----------------|

| | | | |
|--|--|---------------|------------|
| Title | | B15TH/1P-SC-M | |
|  A DOVER COMPANY | | Created Date | 2019-07-04 |
| | | Created By | AU |
| Article/Configuration number | | 15961-040 | |
| Drawing number | | AU00506127 | |

| Rev No | Alteration | Date | Checked | Approved |
|--------|--------------------------------------|------------|---------|----------|
| 10 | Design Changed according to RD100928 | 2012-04-26 | INRJ | PDM |



DEBURR SHARP EDGES; MAX 0.4

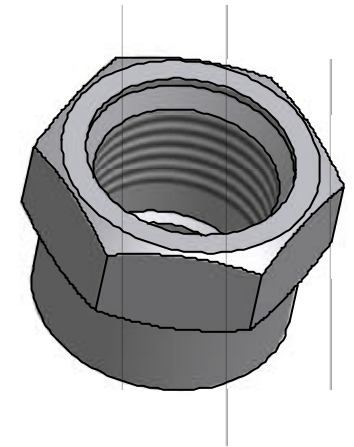
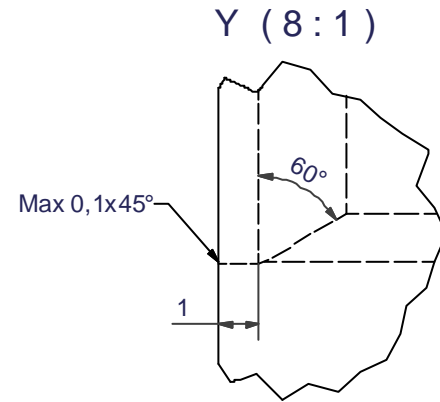
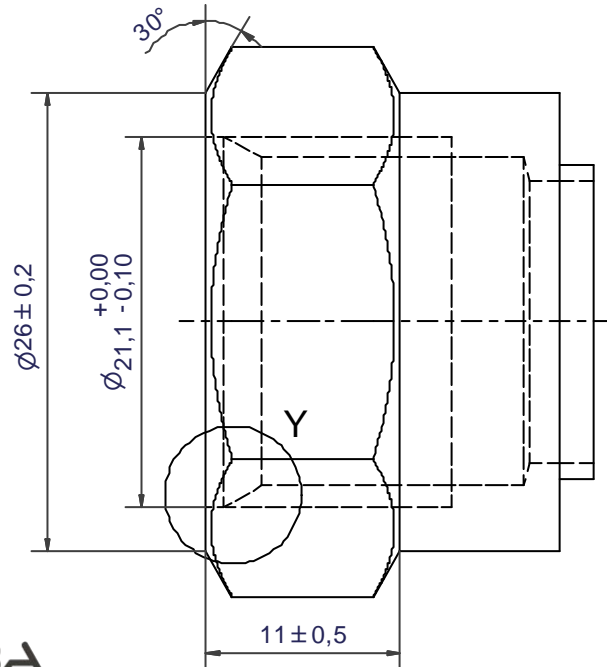
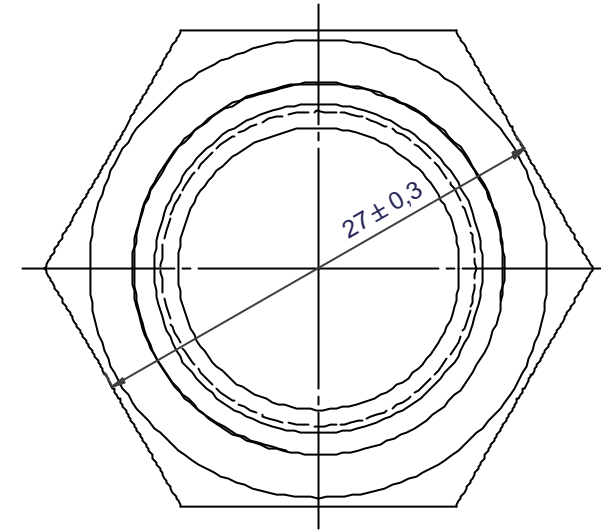
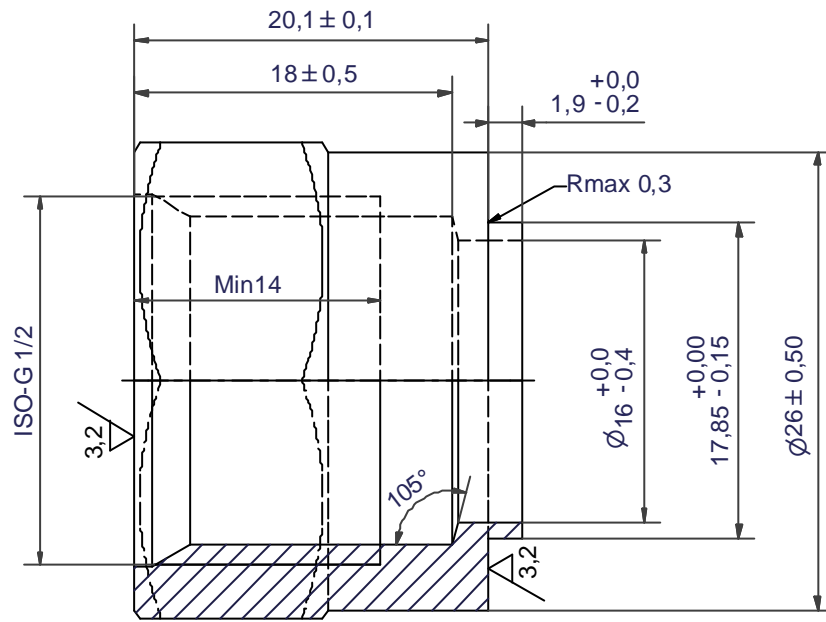
ACCORDING TO MQS
MATERIAL

| Drawn | Checked | Approved | Created Date | General geometrical tolerancing ISO 2768 | General surface finish R_a | Scale | Paper size |
|-----------------------|---------|-------------|----------------|--|------------------------------|-------|------------|
| HR | TP | PDM | 1992-08-31 | m | 3.2 | - | A3 |
| Title | | | ISO-G 3/4 | | | | |
| Article / Tool number | | Design Type | Drawing number | Revision | Sheet | | |
| | | CD | CD000007 | 10 | 1 (1) | | |

AXINTRA
ÉCHANGEURS THERMIQUES

SWEF
A DOVER COMPANY

| Rev No. | Alteration | Date | Checked | Approved |
|---------|---------------------|------------|---------|----------|
| 10 | REDRAWN IN INVENTOR | 2004/07/06 | TN | PDM |



© Company Confidential, Property of SWEPI International AB

AXINTRA
ÉCHANGEURS THERMIQUES

| | | | | | | |
|--------------------|----------------------|-----------------------|-----------------------------------|--|--|-----------------------|
| Drawn HR | Checked TP | Approved VP | Created Date 1992/05/05 | General geometrical tolerancing ISO 2768 m | General surface finish R_a 3,2 | Scale 7:2 |
| SUPER | | | Title ISO-G 1/2 INT HEX | | | |
| A DOVER COMPANY | | | Article number - | Drawing number CD000005 | Revision 10 | Sheet 1 (1) |