

B16

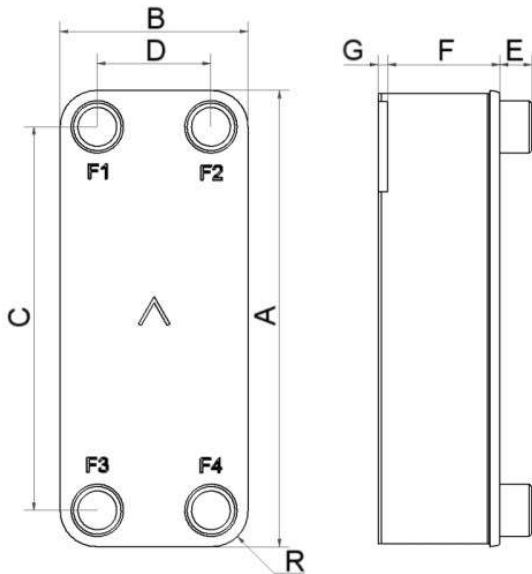
Le B16 a été spécialement conçu pour les applications monophasiques. Il est aussi adapté aux capacités et spécifications des sous-stations de chauffage urbain, des circuits de radiateurs, des applications de chauffage d'eau potable. Le B16 est aussi un excellent choix pour le refroidissement d'huile.



Spécifications de base

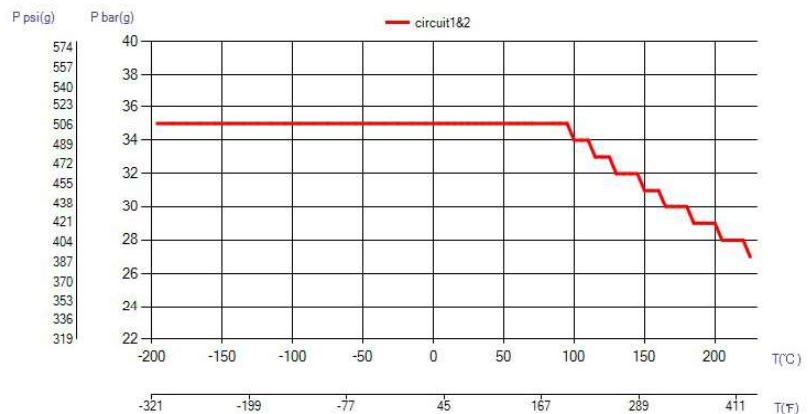
Nombre de plaques max. (NoP)	140
Débit volumétrique max.	16,9 m ³ /h (39.63 gpm)
Volume du canal	0.082/0.082 dm ³ (0.0029/0.0029 ft ³)
Matières	Plaques en acier inoxydable 316, brasage cuivre
Poids sans les connexions	1.48+(0.12*NoP) kg 3.25+(0.265*NoP) lb

Les dimensions standard

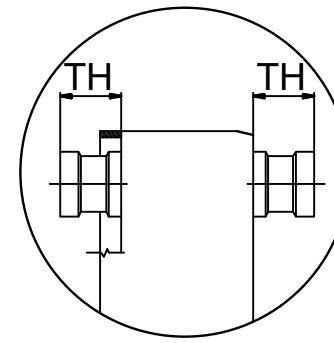
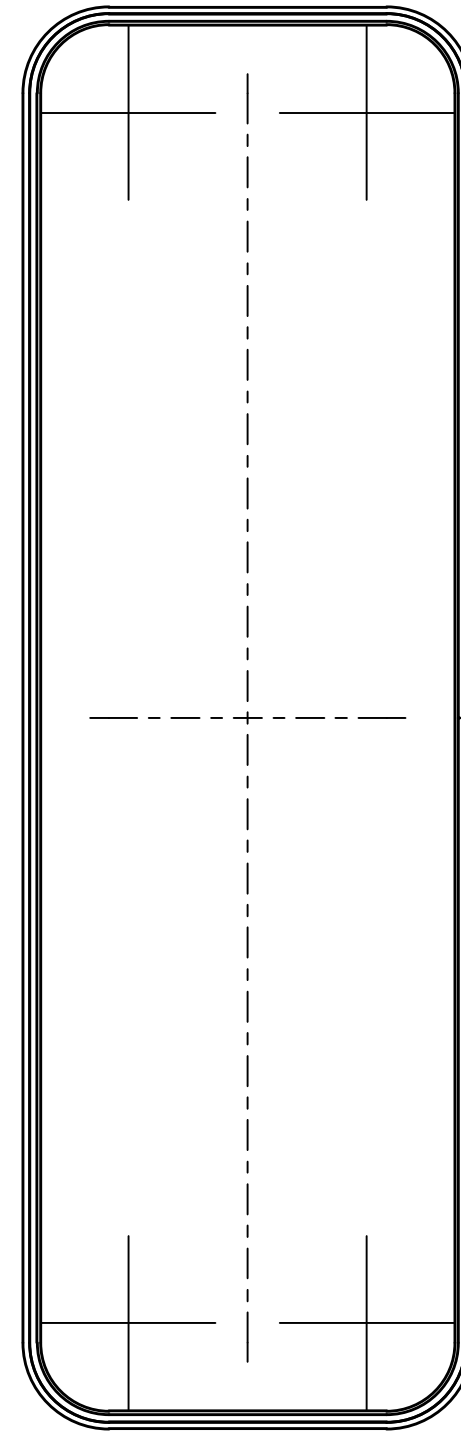
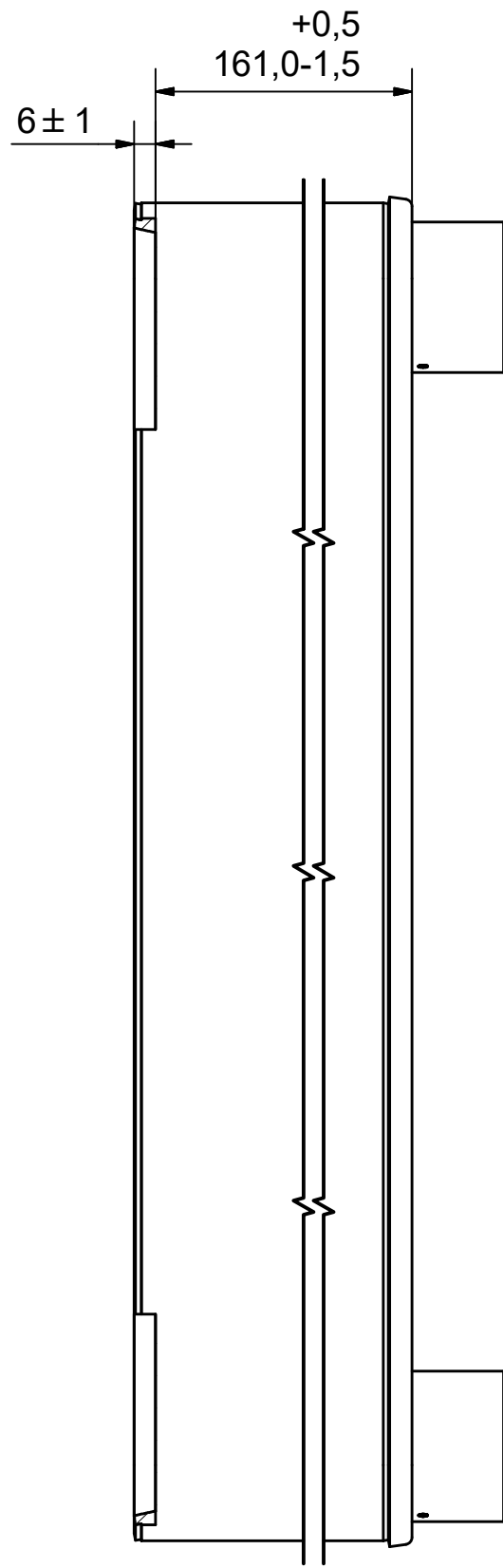
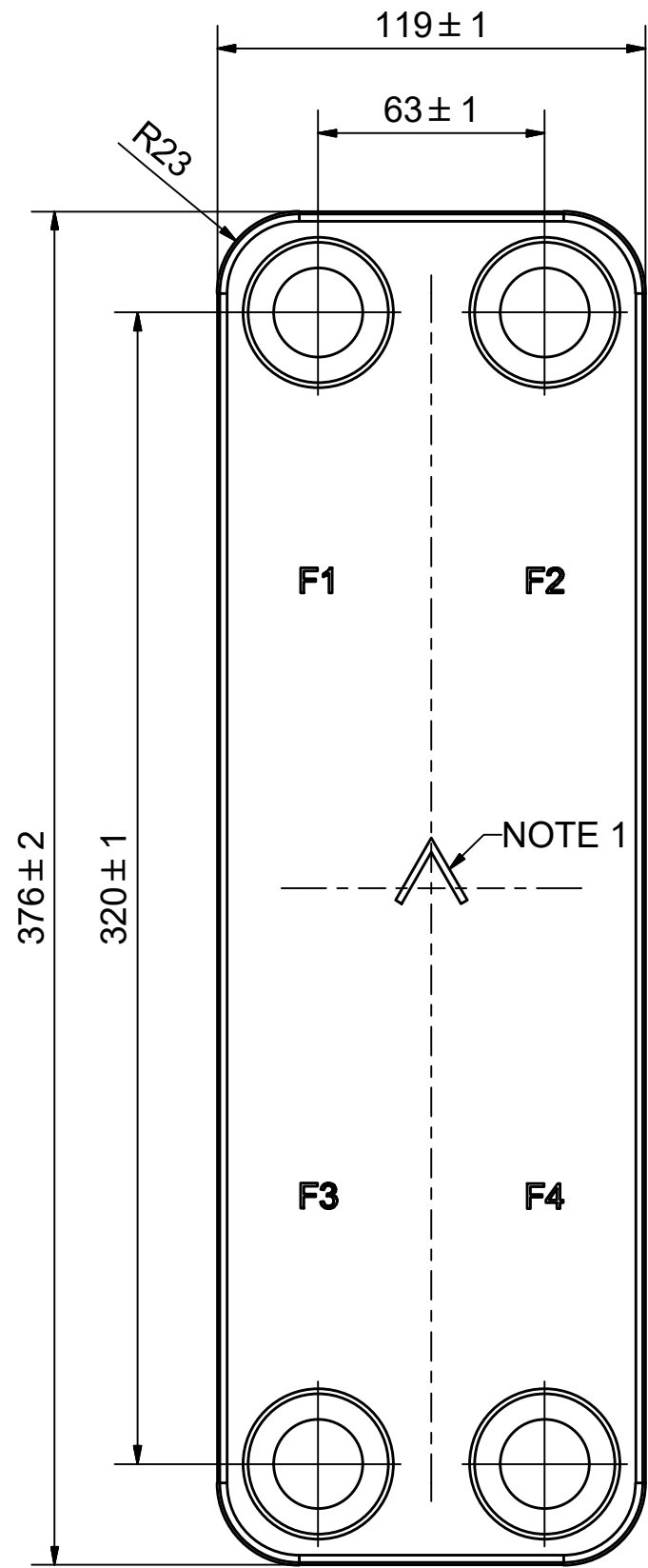


#	MM	IN
A	376	14.8
B	119	4.69
C	320	12.6
D	63	2.48
F	4.00+2.24*(NoP)	0.16+0.09*(NoP)
G	6	0.24
R	23	0.91
E_1	27	1.06

PED pression / température

**AXINTRA**

ÉCHANGEURS THERMIQUES



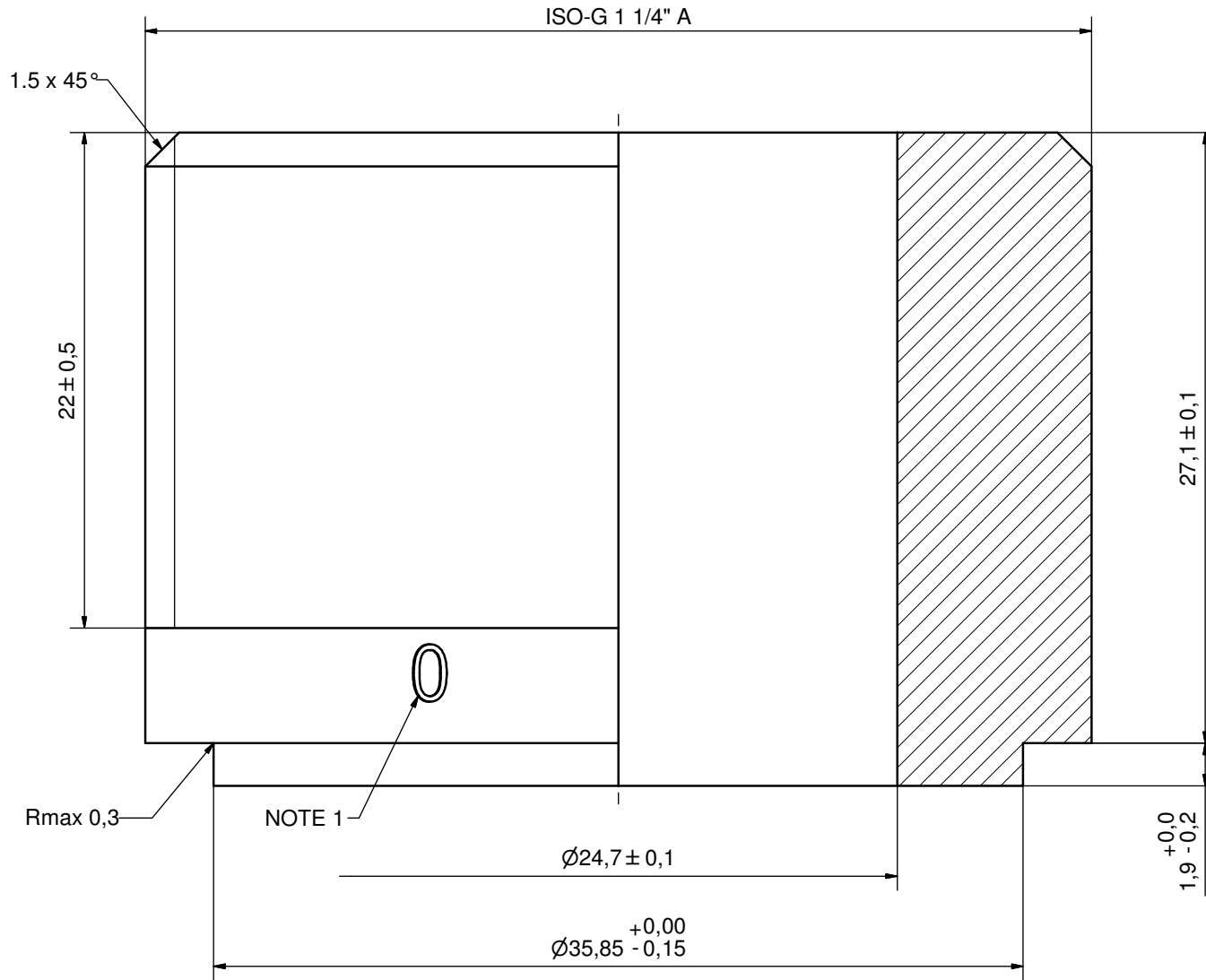
NOTE 1 ALTERNATE MARKING: STICKER OR STAMP

F4	34838	ISO-G 1 1/4" A, TH = 27,1	CD001266
F3	34838	ISO-G 1 1/4" A, TH = 27,1	CD001266
F2	34838	ISO-G 1 1/4" A, TH = 27,1	CD001266
F1	34838	ISO-G 1 1/4" A, TH = 27,1	CD001266

Pos	Article No	Title / Denomination, code, material, dimension etc	Drawing No./ref	Pos	Article No	Title / Denomination, code, material, dimension etc	Drawing No./ref
-----	------------	---	-----------------	-----	------------	---	-----------------

Title		B16H/1P-SC-S	
		Created Date	2019-02-22
		Created By	AU
Article/Configuration number		14872-070	
Drawing number		AU00464657	


Rev No.	Alteration	Date	Checked	Approved
01	Design Changed accordg. to RD100881 (Thread length was 24mm)	2011-10-20	INRJ	PDM



ACCORDING TO MQS
MATERIAL

DEBURR SHARP EDGES: MAX 0.4

NOTE 1: SPECIAL MARKING FOR IDENTIFICATION ONLY
0 = 304 MATERIAL
PLACED AT 2 PLACES 180° FROM EACH OTHER

Drawn	Checked	Approved	Created Date	General geometrical tolerancing ISO 2768	General surface finish Ra	Scale
INRJ	PDM	PDM	2010-06-04	m	3.2	-
			ISO-G 1 1/4" A			
Article number		DesignType	Drawing number	Revision	Sheet	
-			CD001266	01	1 (1)	