

# B8T

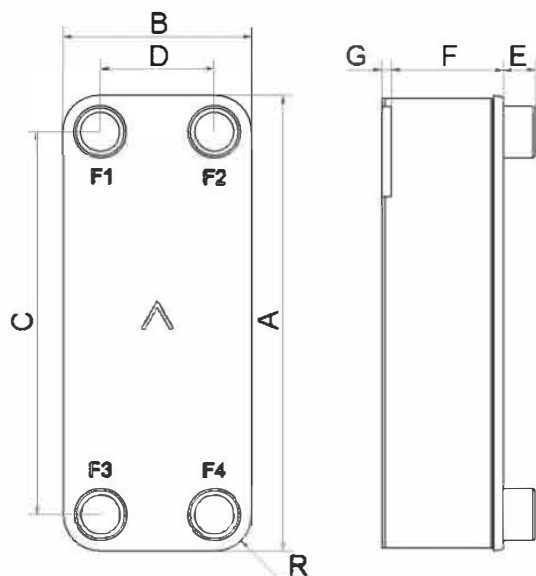
Le B8T permet d'obtenir un échange thermique efficace dans des applications à faible débit qui exigent un espace restreint. Facile à installer et utiliser, ce produit est compact et polyvalent. C'est donc un bon choix pour diverses applications à une et deux phases, dans de nombreux secteurs industriels.



## Spécifications de base

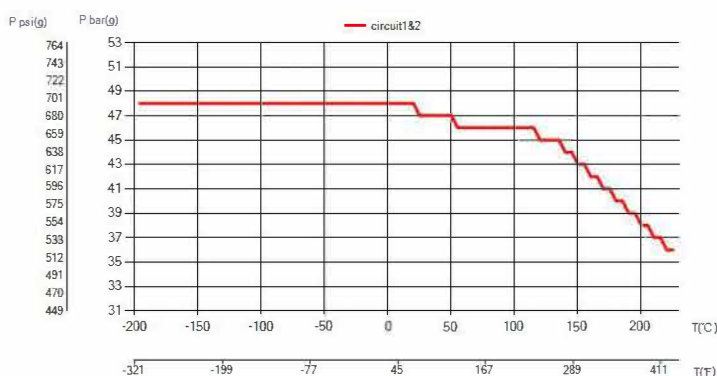
|                              |  |
|------------------------------|--|
| Nombre de plaques max. (NoP) | 60   |
| Débit volumétrique max.      | 4 m <sup>3</sup> /h (17.61 gpm)                              |
| Volume du canal              | 0.039/0.039 dm <sup>3</sup> (0.0014/0.0014 ft <sup>3</sup> ) |
| Matières                     | Plaques en acier inoxydable 316, brasage cuivre              |
| Poids sans les connexions    | 0.85+(0.0749*NoP) kg<br>1.88+(0.165*NoP) lb                  |

## Les dimensions standard



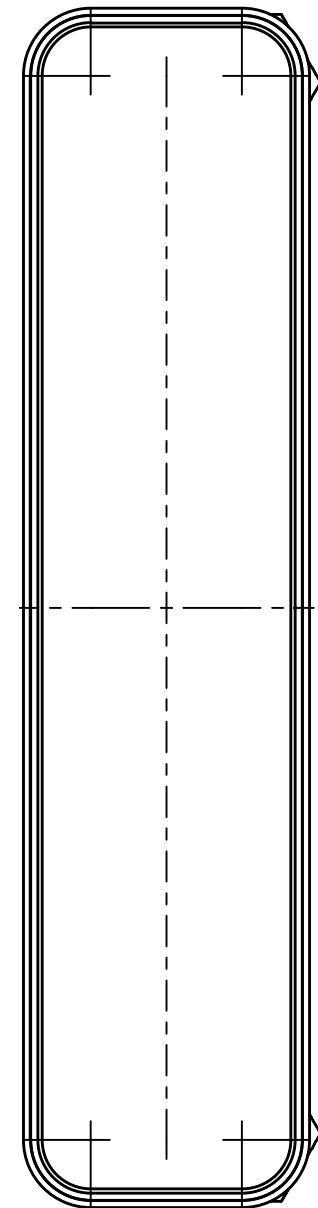
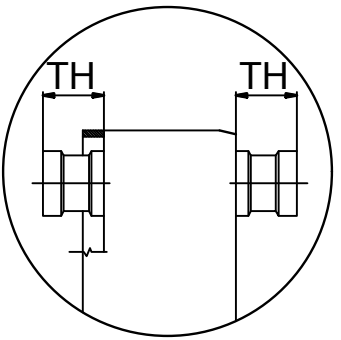
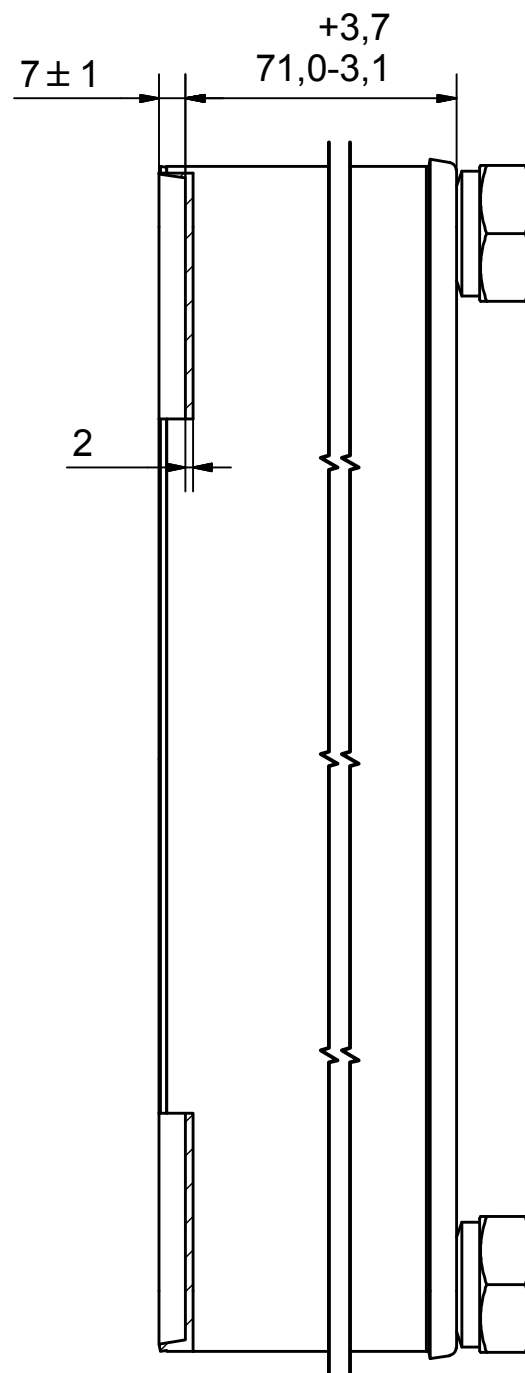
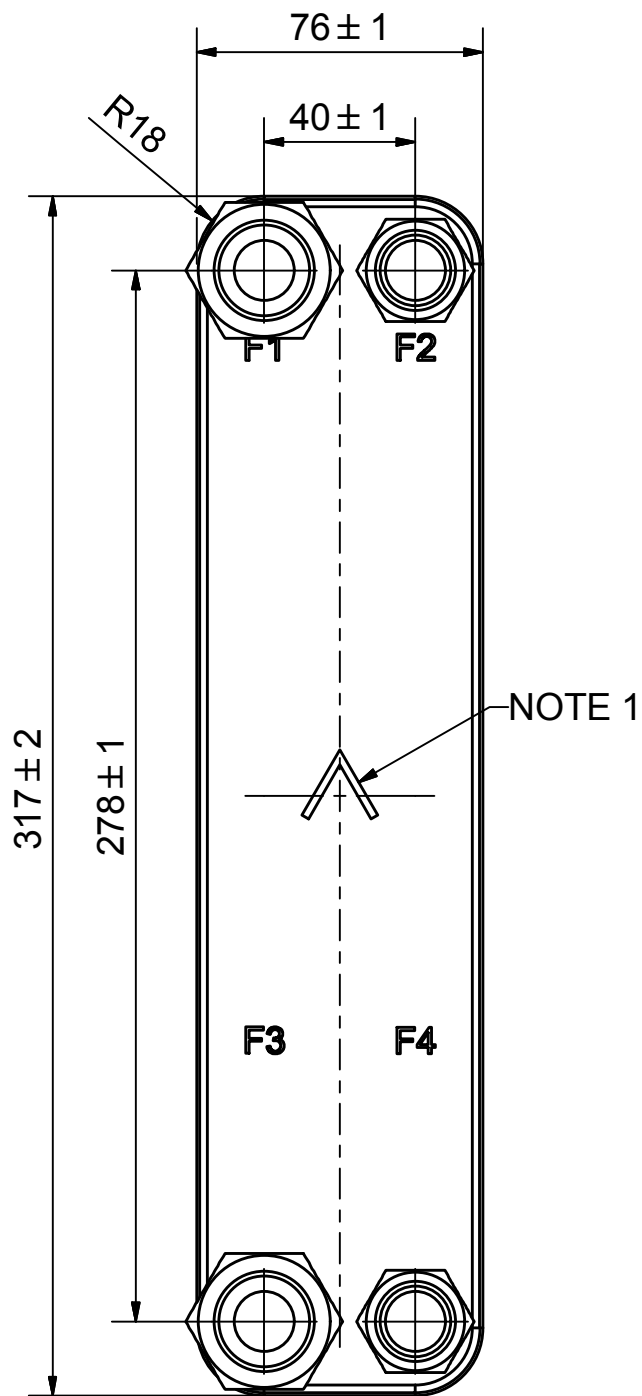
| #   | MM              | IN              |
|-----|-----------------|-----------------|
| A   | 317             | 12.48           |
| B   | 76              | 2.99            |
| C   | 278             | 10.94           |
| D   | 40              | 1.57            |
| F   | 4.00+2.24*(NoP) | 0.16+0.09*(NoP) |
| G   | 7               | 0.28            |
| R   | 18              | 0.71            |
| E_1 | 20              | 0.79            |

## PED pression / température



**AXINTRA**

ÉCHANGEURS THERMIQUES




**AXINTRA**

ÉCHANGEURS THERMIQUES

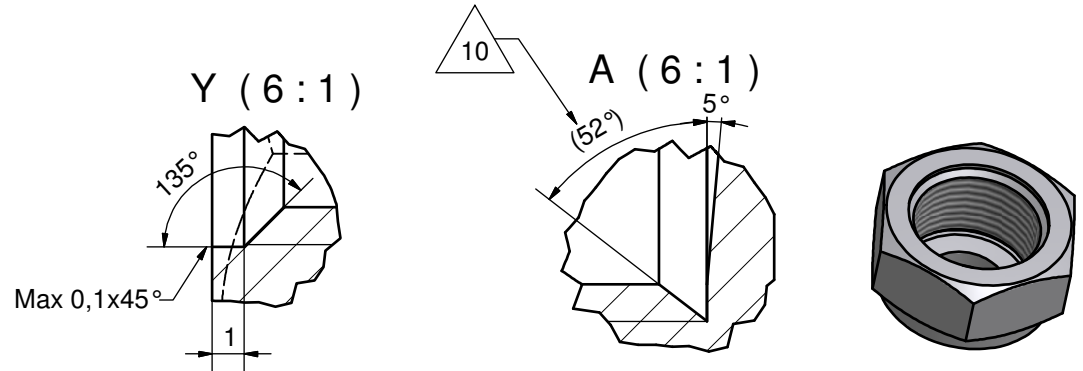
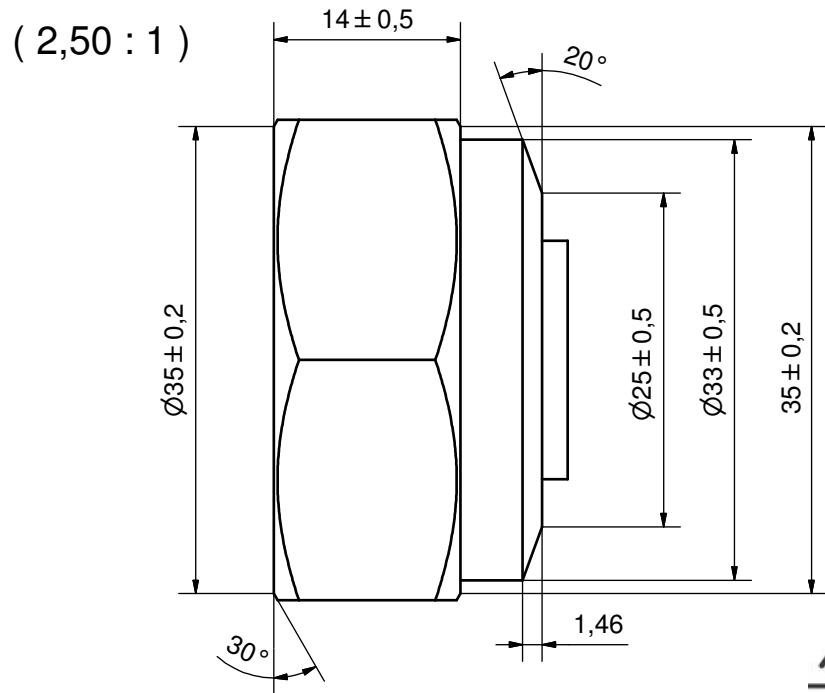
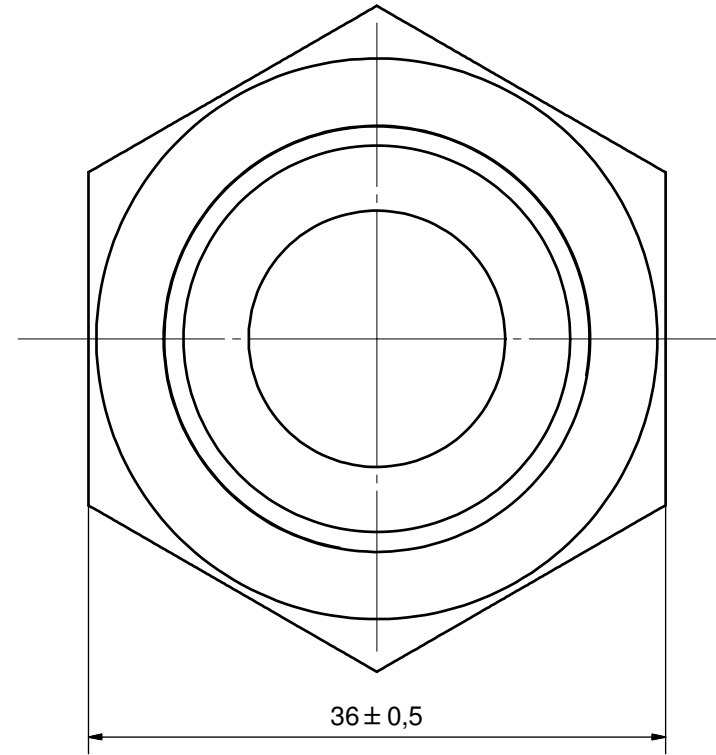
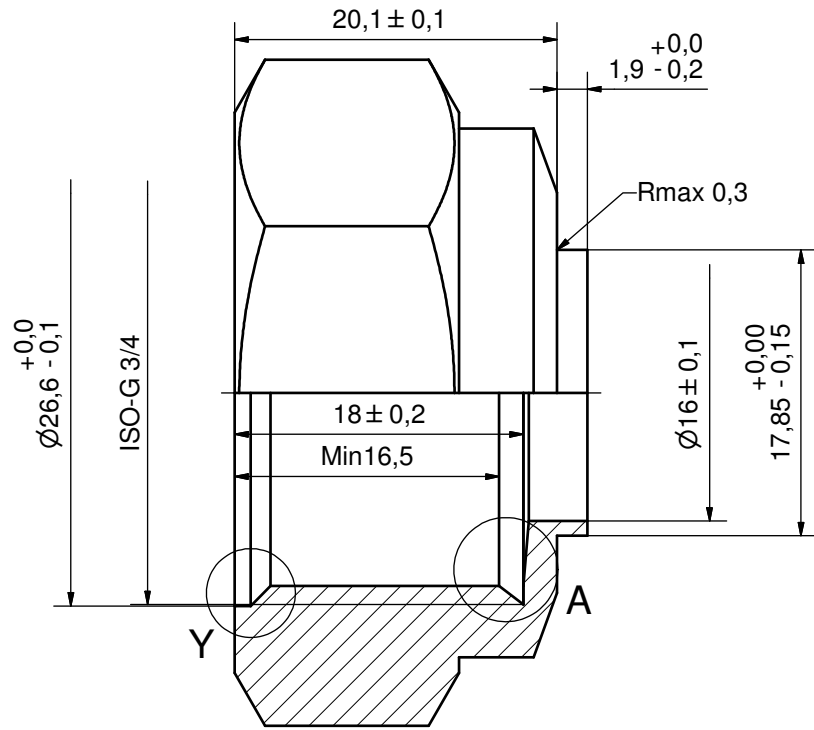
|    |       |                              |          |
|----|-------|------------------------------|----------|
| F4 | 45411 | ISO-G 1/2 INT HEX, TH = 20,1 | CD000005 |
| F3 | 45429 | ISO-G 3/4, TH = 20,1         | CD000007 |
| F2 | 45411 | ISO-G 1/2 INT HEX, TH = 20,1 | CD000005 |
| F1 | 45429 | ISO-G 3/4, TH = 20,1         | CD000007 |

NOTE 1 ALTERNATE MARKING: STICKER OR STAMP

| Pos | Article No | Title / Denomination, code, material, dimension etc | Drawing No./ref | Pos | Article No | Title / Denomination, code, material, dimension etc | Drawing No./ref |
|-----|------------|---|-----------------|-----|------------|---|-----------------|
|-----|------------|---|-----------------|-----|------------|---|-----------------|

|  |  |                     |            |
|--|--|---------------------|------------|
| Title  |  | <b>B8TH/1P-SC-M</b> |            |
| <br>A DOVER COMPANY |  | Created Date        | 2017-08-06 |
|  |  | Created By          | AU         |
| Article/Configuration number   |  | 14349-030           |            |
| Drawing number   |  | AU00292929          |            |

| Rev No | Alteration                           | Date       | Checked | Approved |
|--------|--------------------------------------|------------|---------|----------|
| 10     | Design Changed according to RD100928 | 2012-04-26 | INRJ    | PDM      |



DEBURR SHARP EDGES; MAX 0.4

ACCORDING TO MQS  
MATERIAL

|                           |               |                 |                             |   |  |                |                  |
|---------------------------|---------------|-----------------|-----------------------------|---|--|----------------|------------------|
| Drawn<br>HR               | Checked<br>TP | Approved<br>PDM | Created Date<br>1992-08-31  | General geometrical tolerancing ISO 2768<br>m | General surface finish R <sub>a</sub> :<br>3.2 | Scale<br>-     | Paper size<br>A3 |
| Title<br><b>ISO-G 3/4</b> |               |                 | Article / Tool number<br>CD | Design Type<br>CD                             | Drawing number<br>CD000007                     | Revision<br>10 | Sheet<br>1 (1)   |

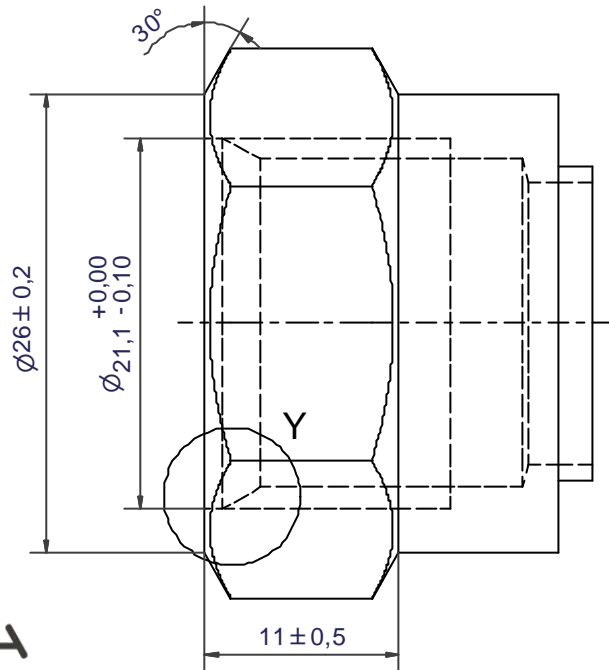
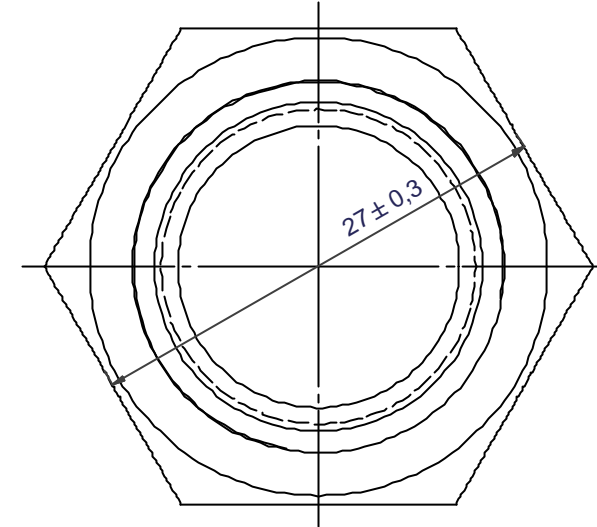
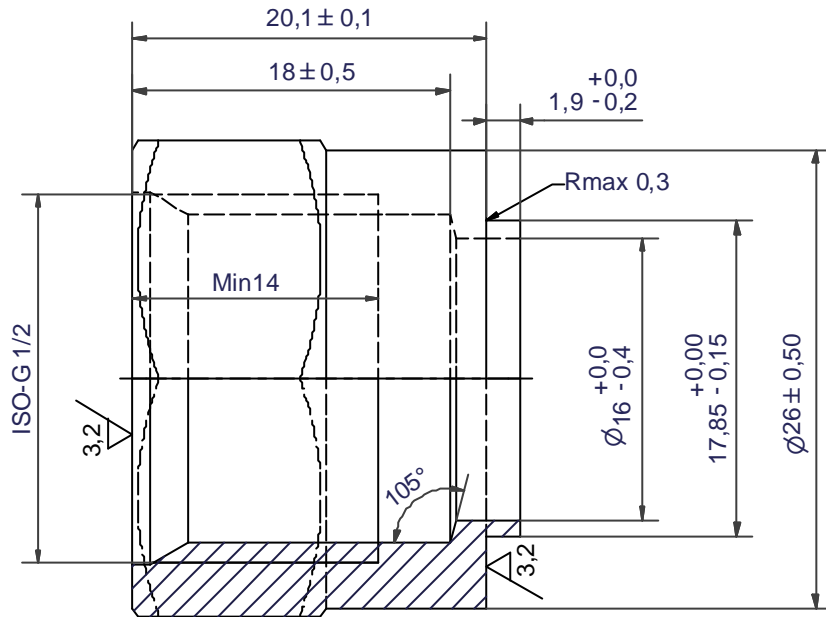
**AXINTRA**  
ÉCHANGEURS THERMIQUES

**SWEF**  
A DOVER COMPANY

© Company Confidential, Property of SWEP International AB

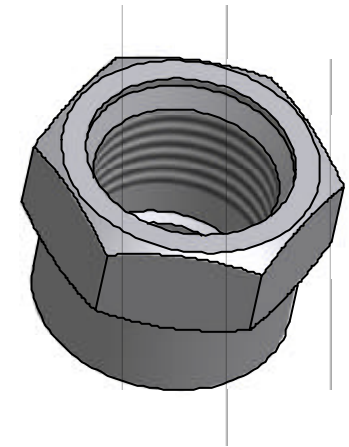
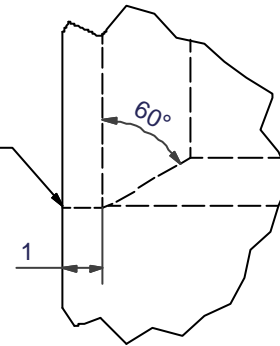
**AXINTRA**  
ÉCHANGEURS THERMIQUES

| Rev No. | Alteration          | Date       | Checked | Approved |
|---------|---------------------|------------|---------|----------|
| 10      | REDRAWN IN INVENTOR | 2004/07/06 | TN      | PDM      |



Y (8:1)

Max 0,1x45°



|                                |               |                |                            |   |                                     |  |                |
|--------------------------------|---------------|----------------|----------------------------|---|-------------------------------------|--|----------------|
| Drawn<br>HR                    | Checked<br>TP | Approved<br>VP | Created Date<br>1992/05/05 | General geometrical tolerancing ISO 2768<br>m | General surface finish $R_a$<br>3.2 |  | Scale<br>7:2   |
| <b>SWEP</b><br>A DOVER COMPANY |               |                | <b>ISO-G 1/2 INT HEX</b>   |   |                                     |  |                |
| Article number<br>-            |               |                | Drawing number<br>CD000005 |   | Revision<br>10                      |  | Sheet<br>1 (1) |