

V200T

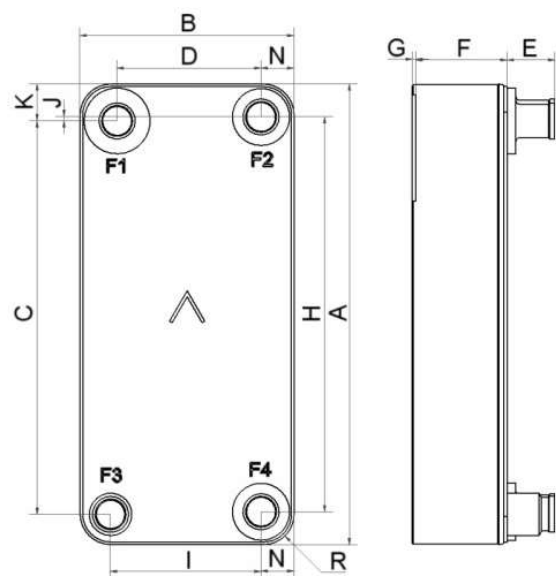
Le V200T est un évaporateur qui offre une efficacité élevée avec de nombreux réfrigérants. Il combine un format compact et un agencement de plaques spécialement développé pour créer un échangeur thermique extrêmement efficace. Le V200T est le choix idéal pour les chillers, les pompes à chaleur et les économiseurs.



Spécifications de base

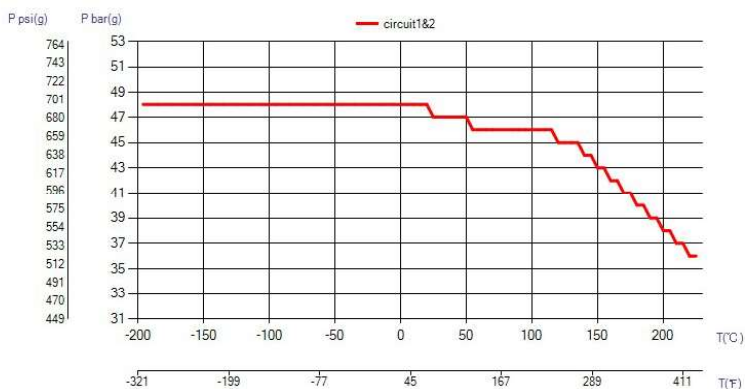
Nombre de plaques max. (NoP)	250
Débit volumétrique max.	43,7 m ³ /h (30.82 gpm)
Volume du canal	0.241/0.241 dm ³ (0.0085/0.0085 ft ³)
Matières	Plaques en acier inoxydable 316, brasage cuivre
Poids sans les connexions	9.45+(0.42*NoP) kg 20.84+(0.926*NoP) lb

Les dimensions standard

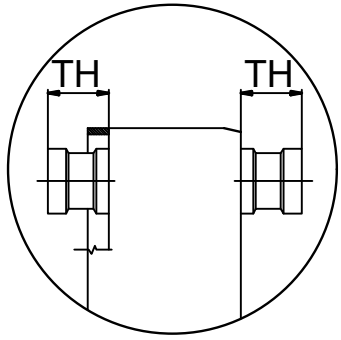
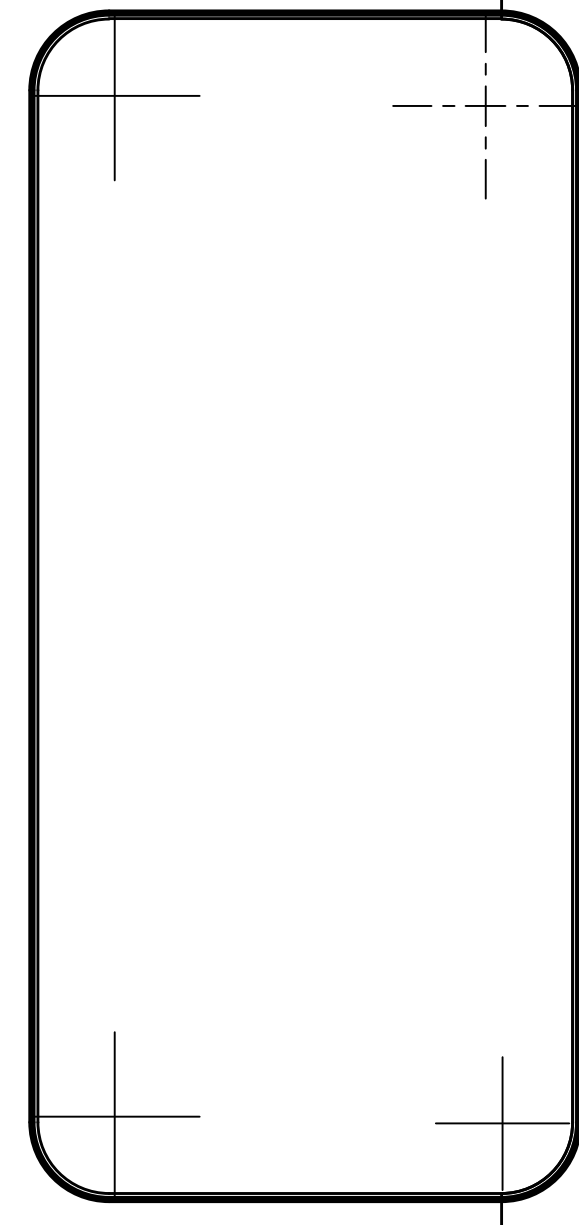
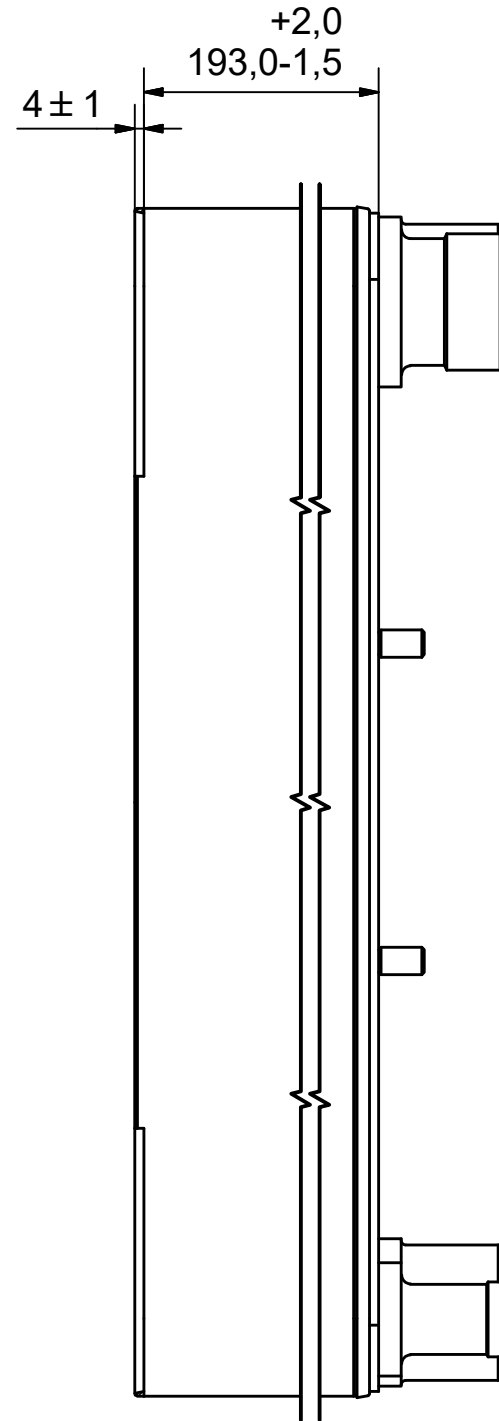
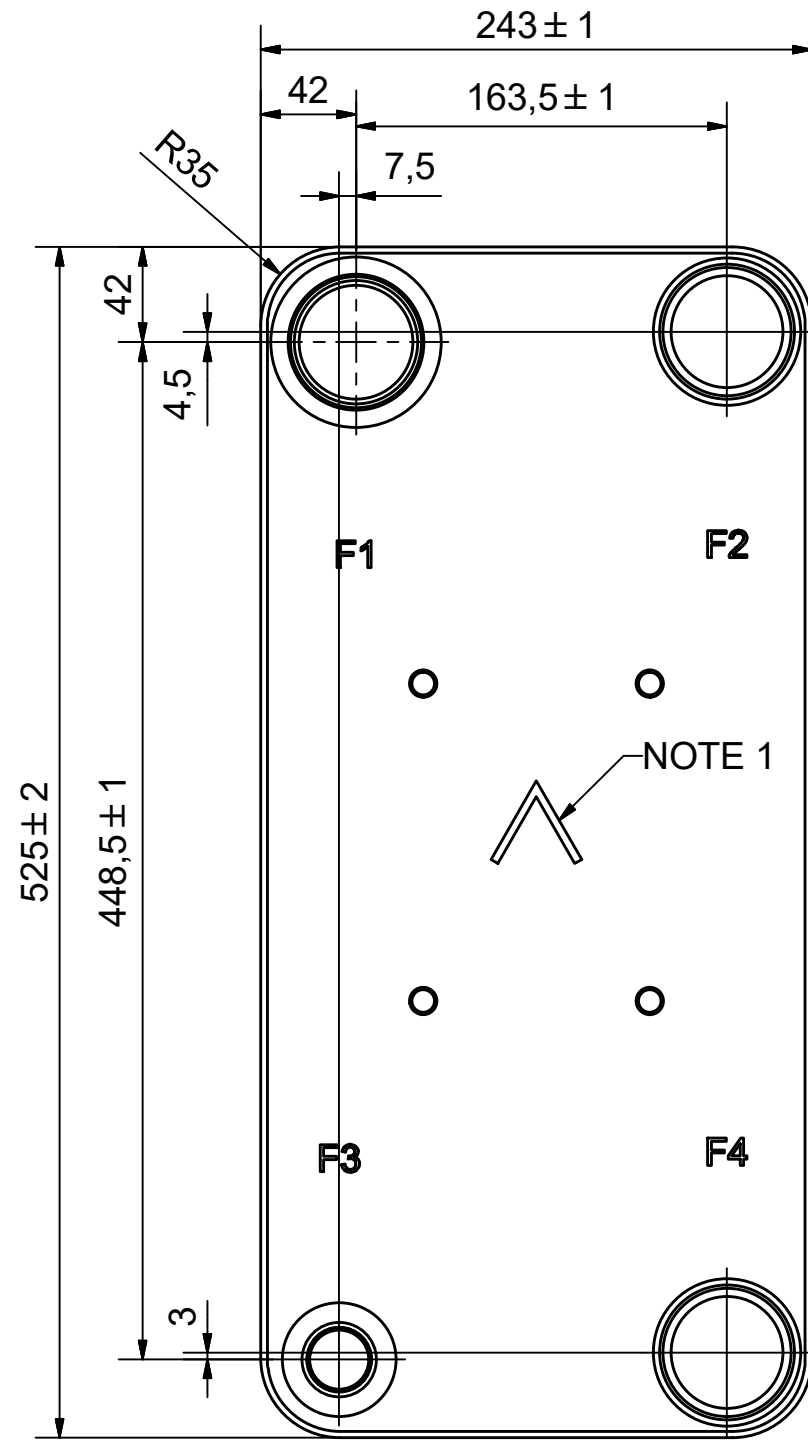


#	MM	IN
A	525	20.67
B	243	9.57
C	448.50	17.66
D	163.50	6.44
F	10.00+2.29*(NoP)	0.39+0.09*(NoP)
G	4	0.16
H	450	17.72
I	171	6.73
J	4.50	0.18
K	42	1.65
N	37.50	1.48
R	35	1.38
E_1	54	2.13

PED pression / température



ÉCHANGEURS THERMIQUES



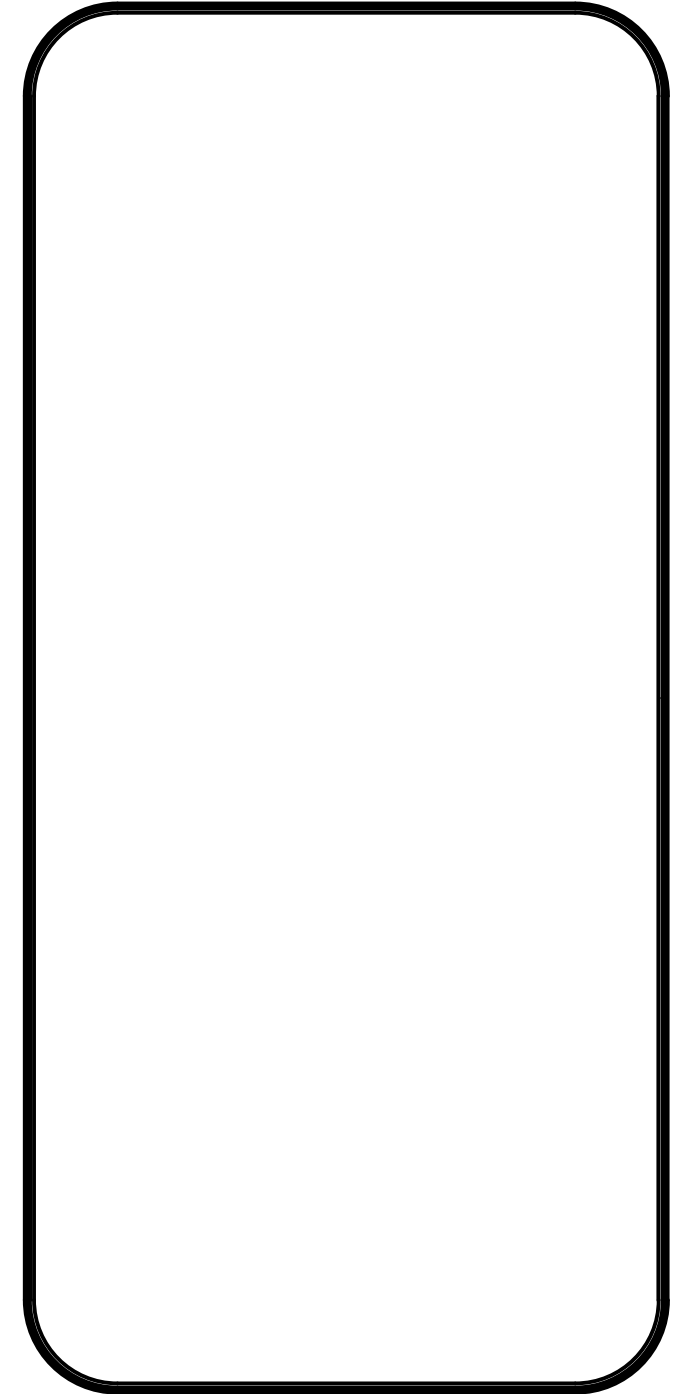
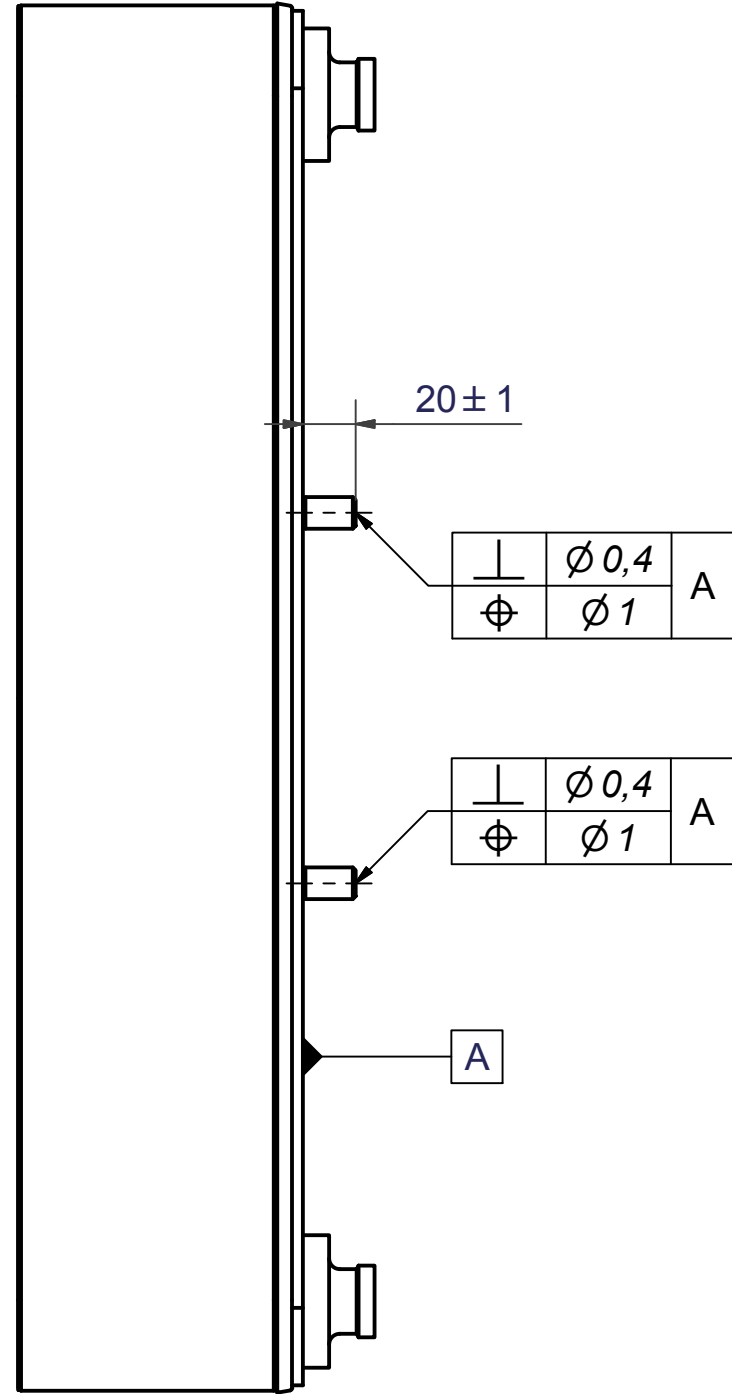
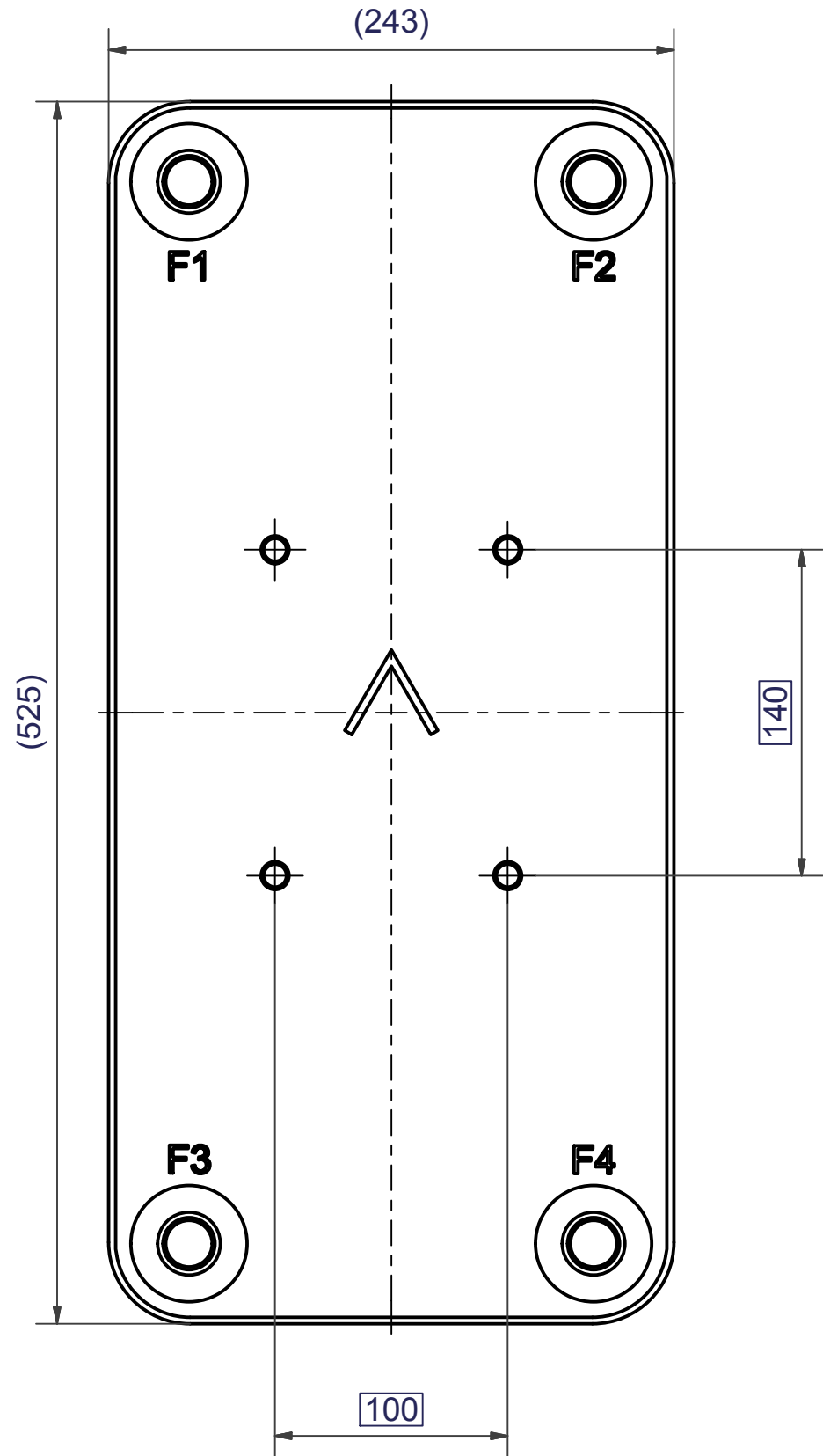
AXINTRA
ÉCHANGEURS THERMIQUES

F4	46101	ISO-G 2" A, TH = 54,2	CD000322
F3	30105	SOLDER 28U, TH = 54,2	CD000608
F2	46101	ISO-G 2" A, TH = 54,2	CD000322
F1	45495	SOLDER $\phi 54.3$ & WELD $\phi 60$, TH = 54,2	CD000012
F	21118	B120T/50 BOLT LOC F 4x C140x100	CG450024_1

Pos	Article No	Title / Denomination, code, material, dimension etc	Drawing No./ref	Pos	Article No	Title / Denomination, code, material, dimension etc	Drawing No./ref
-----	------------	---	-----------------	-----	------------	---	-----------------

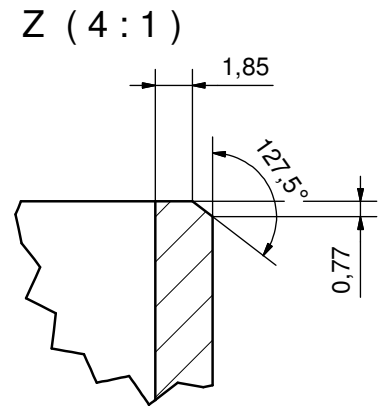
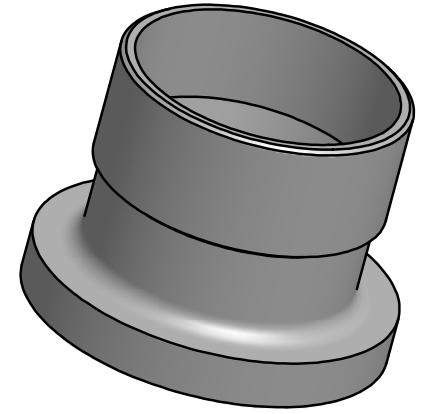
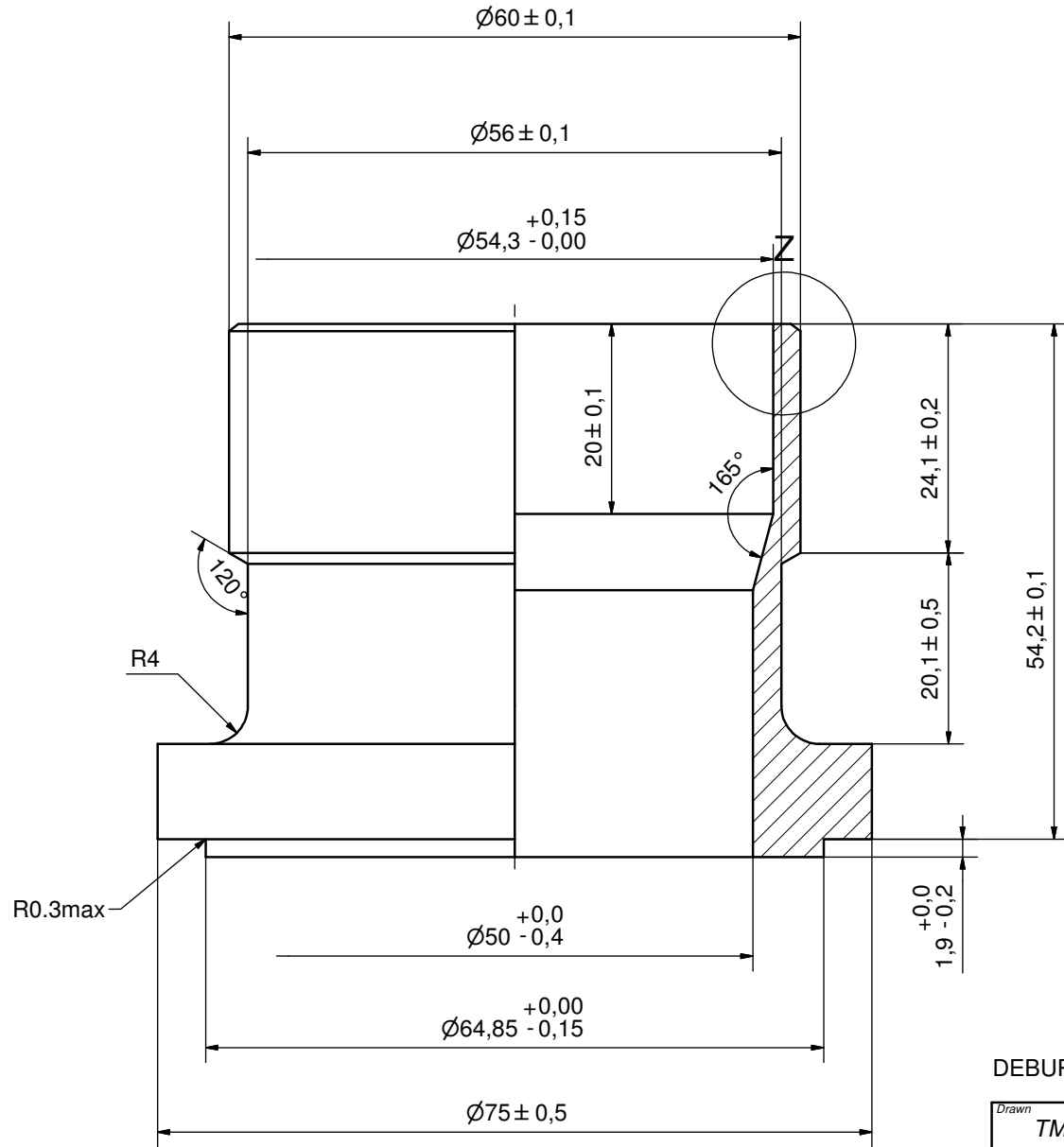
NOTE 1 ALTERNATE MARKING: STICKER OR STAMP

Title		V200TH/1P-SC-M	
		Created Date	2019-11-06
		Created By	AU
Article/Configuration number		14161-080	
Drawing number		AU00540807	




1	4	STUD BOLT M12x20 ART. NO. 45095	M12x20
IT	QTY	DESCRIPTION	Drawing No./Ref
lathe	PDM	PDM	2004-10-12
		General geometrical tolerancing ISO 2768:	m
		General surface finish R _a :	3.2
		Scale	1:1
		B120T/50 BOLT LOC F 4x C140x100	
		Article number	21118
		Drawing number	CG450024
		Revision	00
		Sheet	1 (1)

Rev No.	Alteration	Date	Checked	Approved
10	ADDED DEBURR AND MATERIAL INFO	2009/07/28	RJ	PDM



DEBURR SHARP EDGES; 0.4MAX

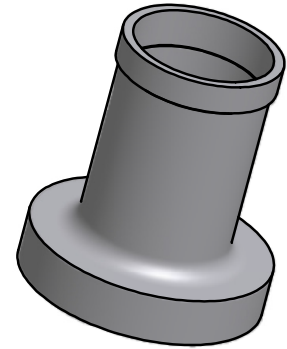
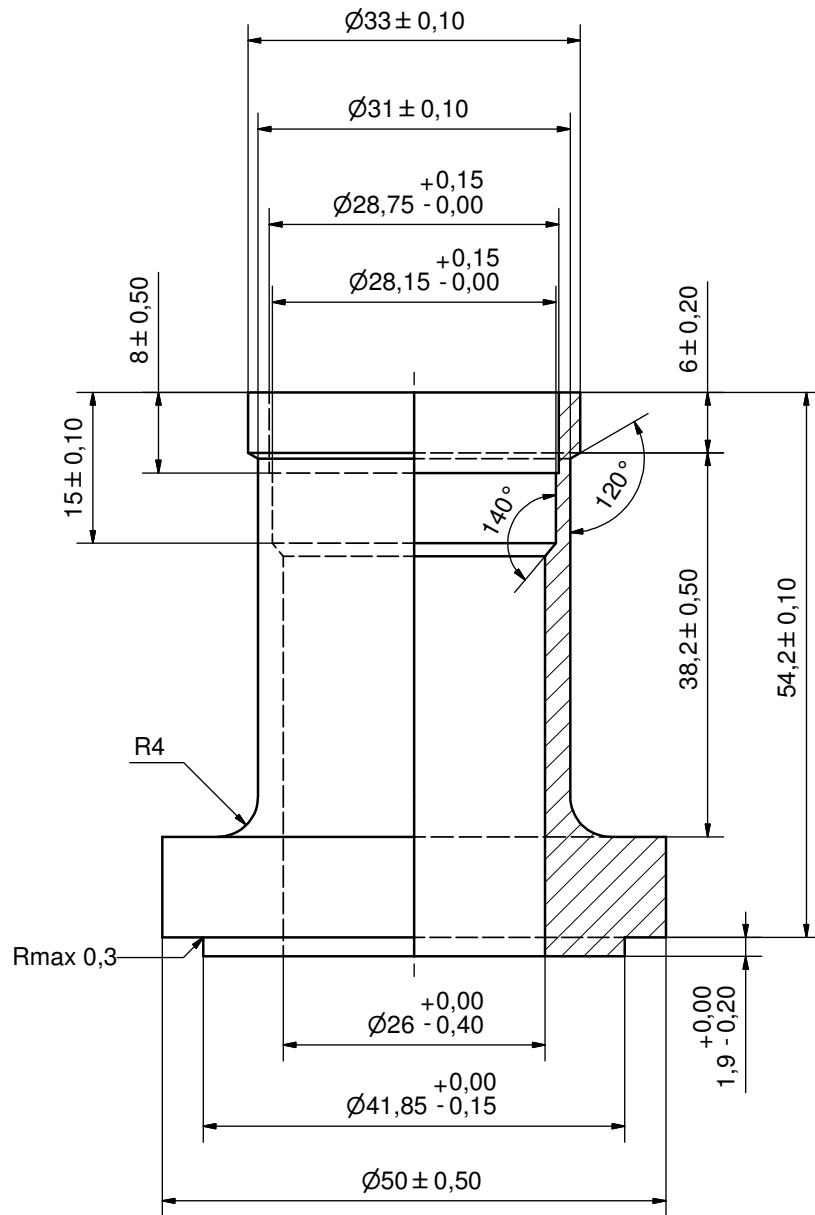
ACCORDING TO MQS
MATERIAL

Drawn	Checked	Approved	Created Date	General geometrical tolerancing ISO 2768	General surface finish R_a	Scale
TM	TP	VP	1993-05-28	m	3.2	-
			Title SOLDER $\varnothing 54.3$ & WELD $\varnothing 60$			
Article number		Drawing number		Revision		Sheet
-		CD000012		10		1 (1)

© Company Confidential, Property of SWEVER International AB

AXINTRA
ÉCHANGEURS THERMIQUES


Rev No.	Alteration	Date	Checked	Approved
2	ADDED DEBURR & MATERIAL INFO	2009/07/29	AP	PDM



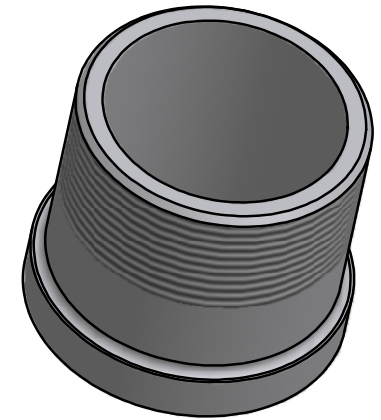
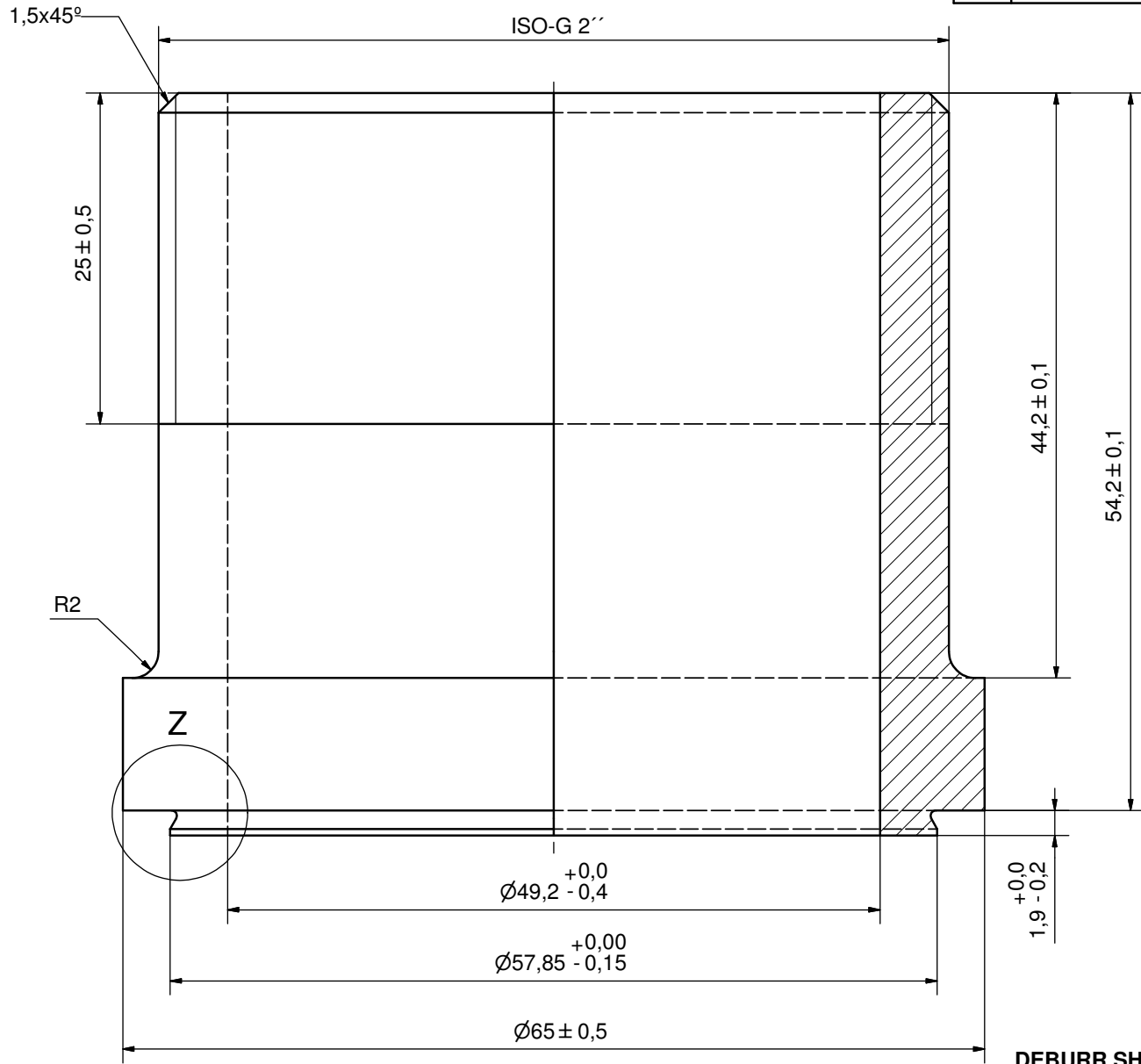
DEBURR SHARP EDGES; MAX 0,4

ACCORDING TO MQS

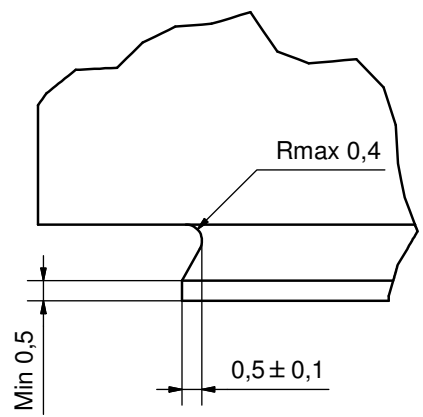
MATERIAL

Drawn EP	Checked JA	Approved PNI	Created Date 2002-11-18	General geometrical tolerancing ISO 2768 m	General surface finish Ra 3.2	Scale 2:1
			Title SOLDER 28U			
Article number -			Drawing number CD000608		Revision 2	Sheet 1 (1)

Rev No.	Alteration	Date	Checked	Approved
4	ADDED DEBURR & MATERIAL INFO	2009/07/22	AP	PDM



Z (8 : 1)



DEBURR SHARP EDGES; MAX 0,4

ACCORDING TO MQS
MATERIAL

© Company Confidential, Property of SWEP International AB



Drawn	Checked	Approved	Created Date	General geometrical tolerancing ISO 2768	General surface finish R_a	Scale
RJ	EG	BOS	1997-02-17	m	3.2	3:1
			Title			
			ISO-G 2" A			
Article number		Drawing number		Revision	Sheet	
-		CD000322		4	1 (1)	