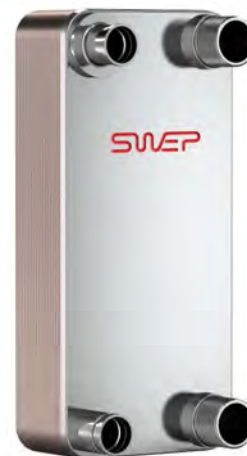


# V200T

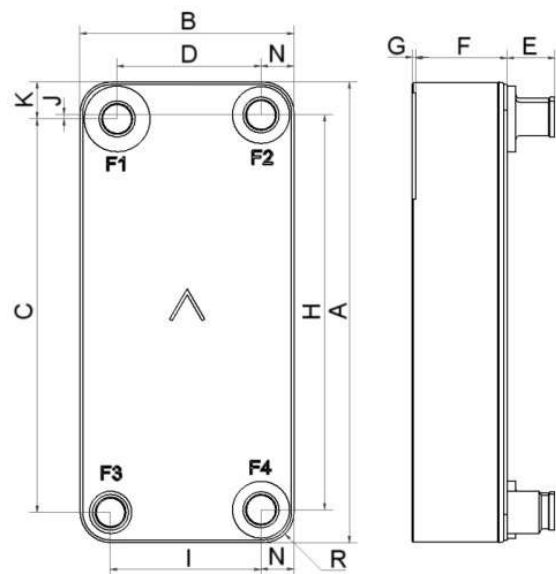
Le V200T est un évaporateur qui offre une efficacité élevée avec de nombreux réfrigérants. Il combine un format compact et un agencement de plaques spécialement développé pour créer un échangeur thermique extrêmement efficace. Le V200T est le choix idéal pour les chillers, les pompes à chaleur et les économiseurs.



## Spécifications de base

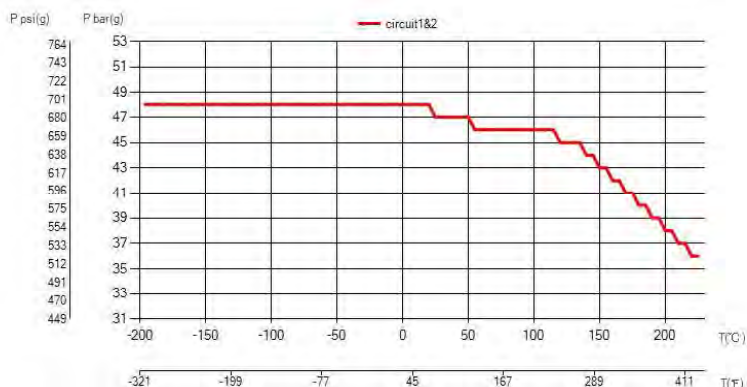
Nombre de plaques max. (NoP)	250
Débit volumétrique max.	43,7 m <sup>3</sup> /h (30.82 gpm)
Volume du canal	0.241/0.241 dm <sup>3</sup> (0.0085/0.0085 ft <sup>3</sup> )
Matières	Plaques en acier inoxydable 316, brasage cuivre
Poids sans les connexions	9.45+(0.42*NoP) kg 20.84+(0.926*NoP) lb

## Les dimensions standard



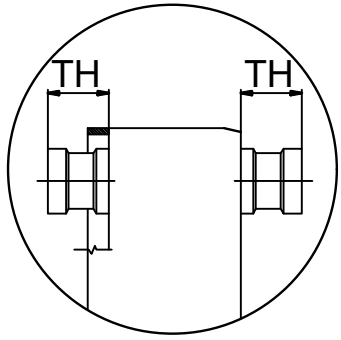
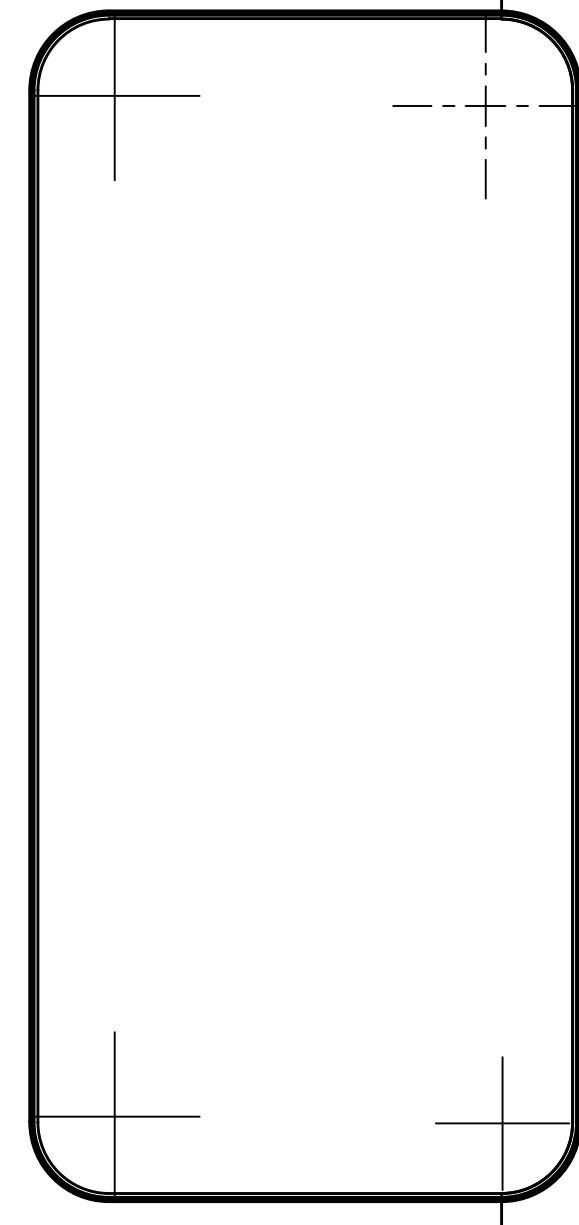
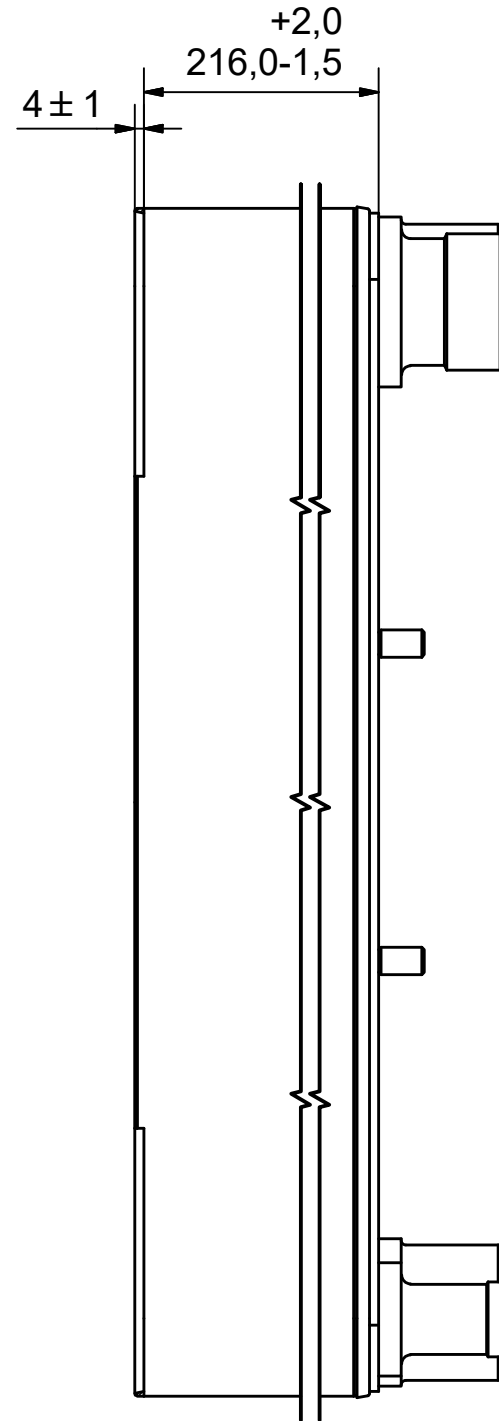
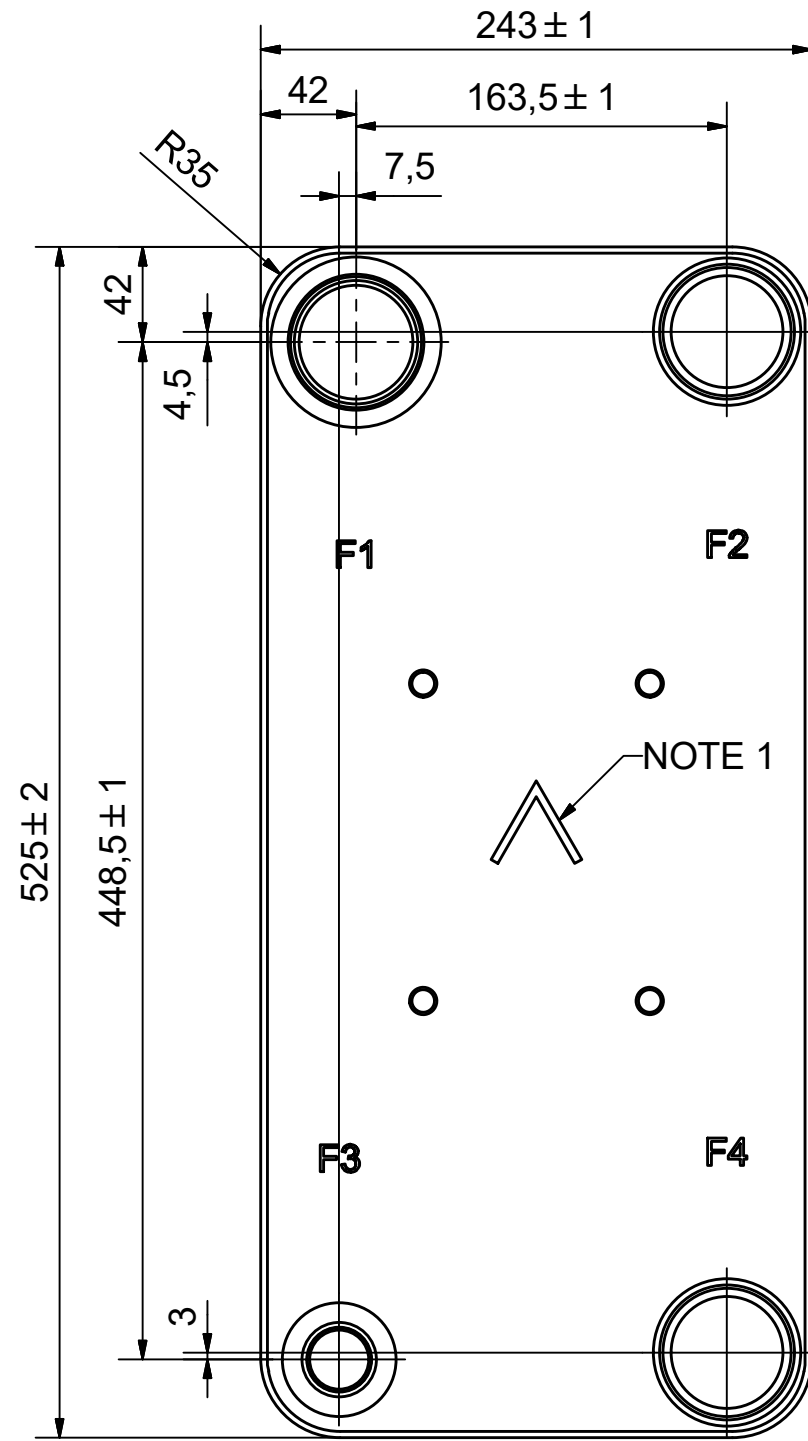
#	MM	IN
A	525	20.67
B	243	9.57
C	448.50	17.66
D	163.50	6.44
F	10.00+2.29*(NoP)	0.39+0.09*(NoP)
G	4	0.16
H	450	17.72
I	171	6.73
J	4.50	0.18
K	42	1.65
N	37.50	1.48
R	35	1.38
E_1	54	2.13

## PED pression / température



**AXINTRA**

ÉCHANGEURS THERMIQUES





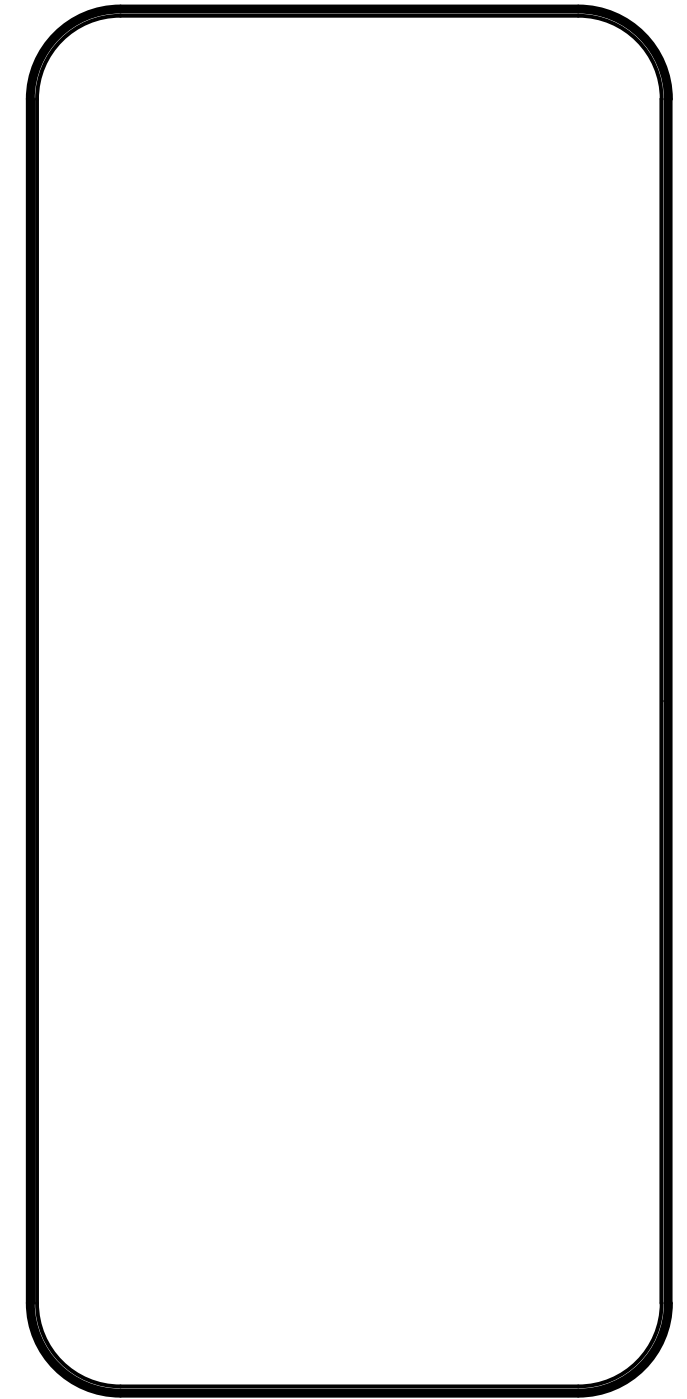
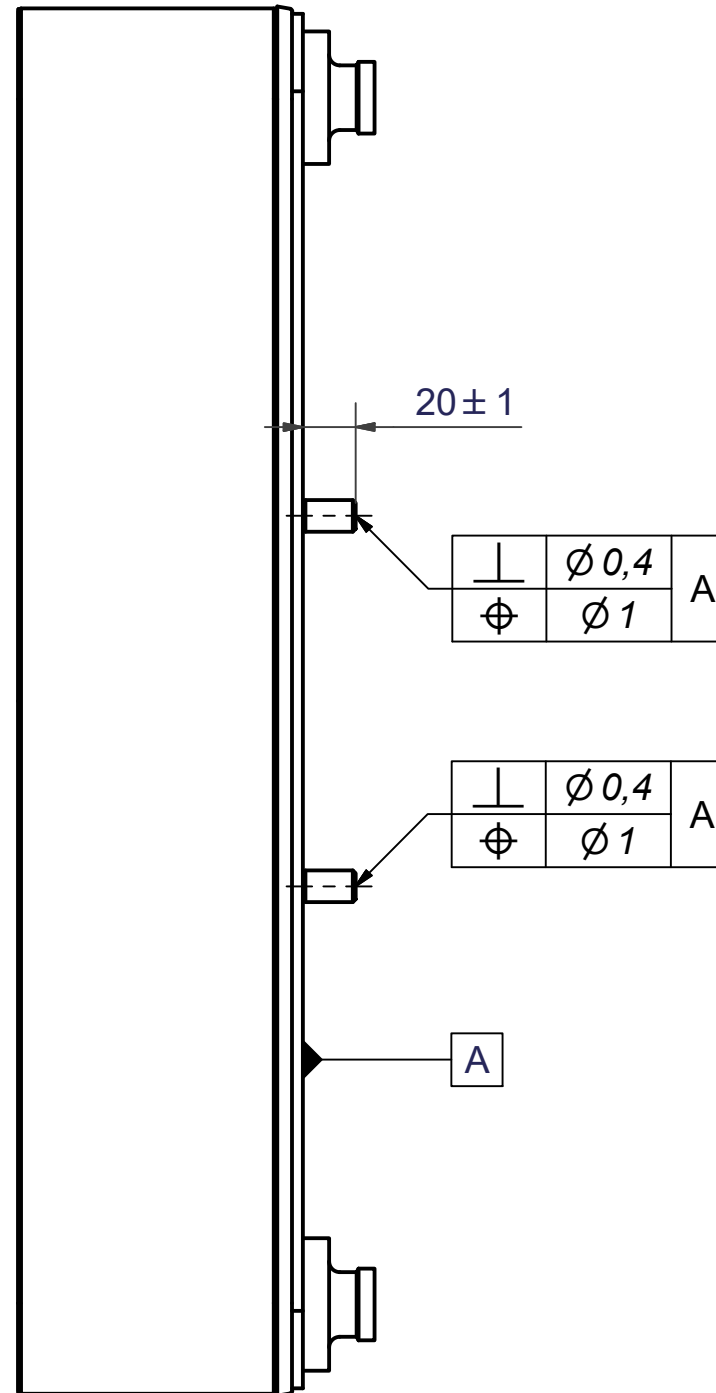
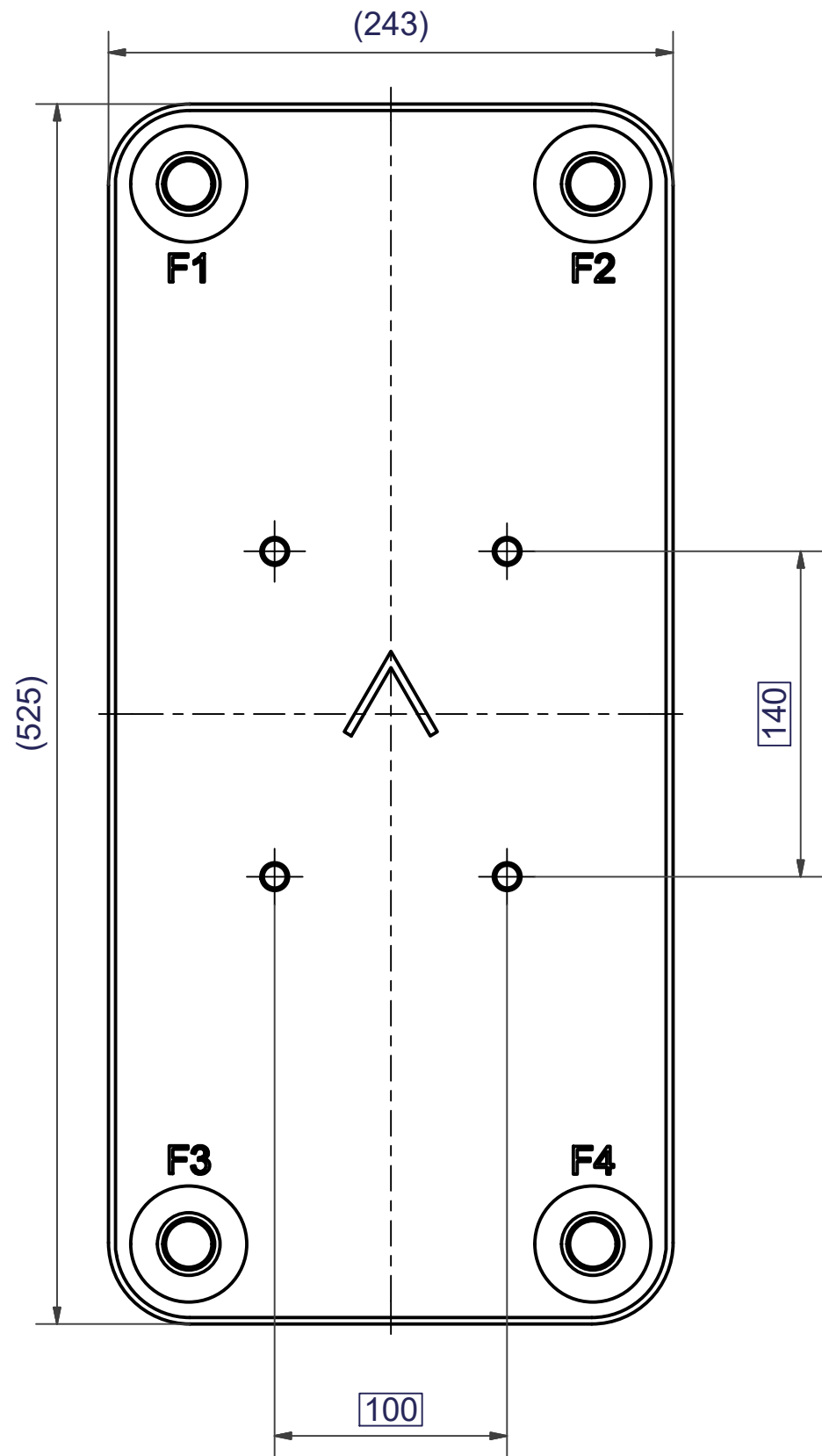
**AXINTRA**  
ÉCHANGEURS THERMIQUES


NOTE 1 ALTERNATE MARKING: STICKER OR STAMP

F4	46101	ISO-G 2" A, TH = 54,2	CD000322
F3	30105	SOLDER 28U, TH = 54,2	CD000608
F2	46101	ISO-G 2" A, TH = 54,2	CD000322
F1	45495	SOLDER ø54.3 & WELD ø60, TH = 54,2	CD000012
F	21118	B120T/50 BOLT LOC F 4x C140x100	CG450024_1

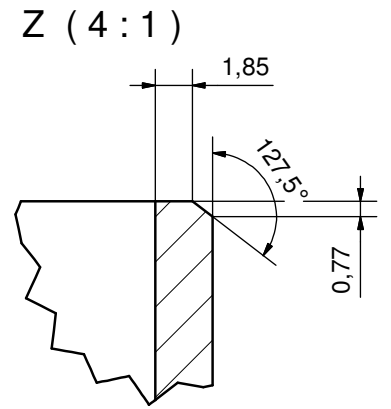
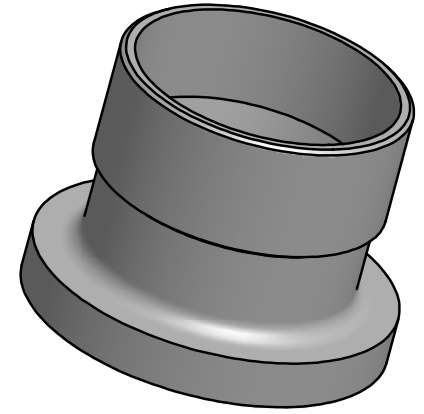
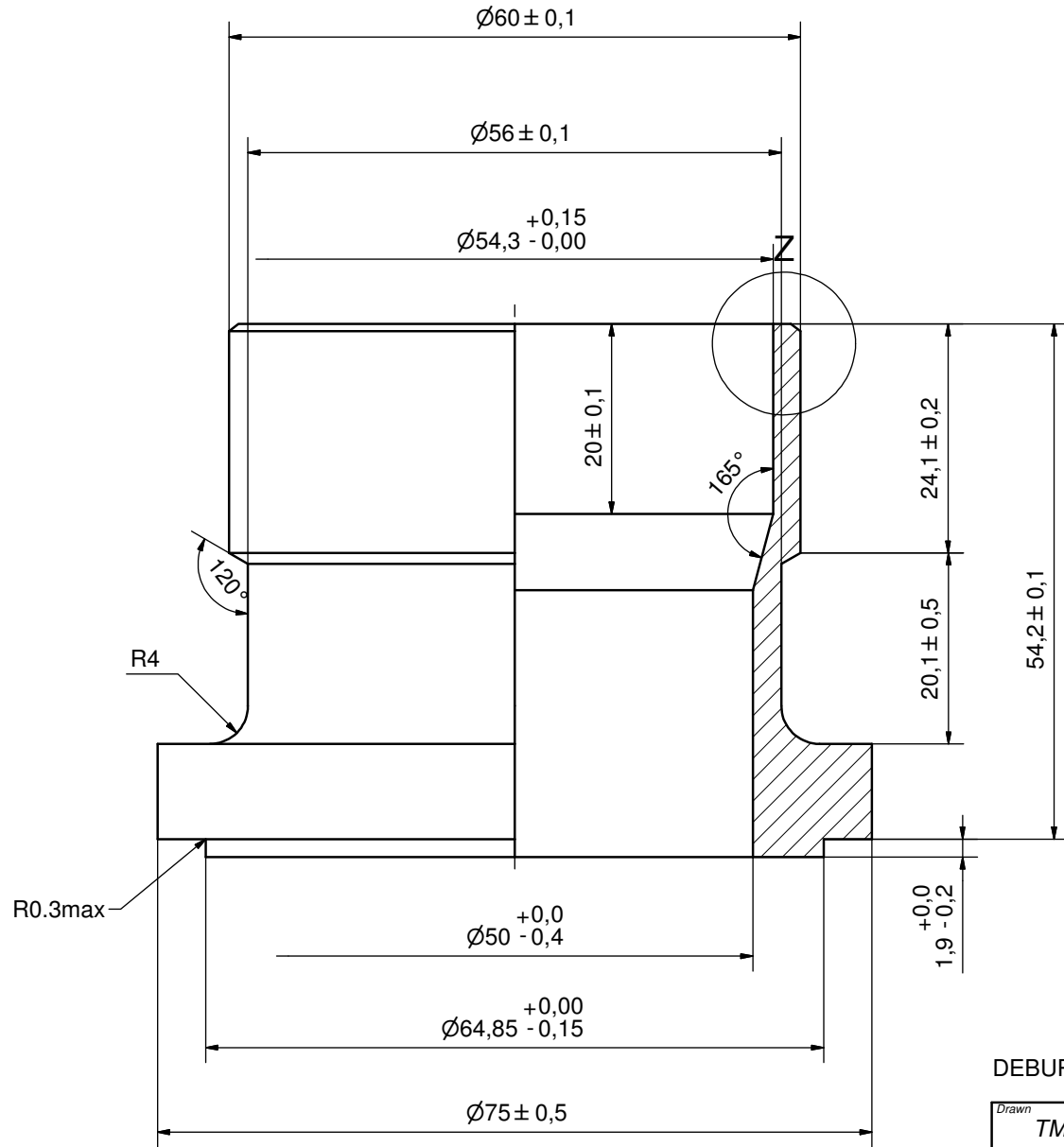
Pos	Article No	Title / Denomination, code, material, dimension etc	Drawing No./ref	Pos	Article No	Title / Denomination, code, material, dimension etc	Drawing No./ref
-----	------------	---	-----------------	-----	------------	---	-----------------

Title		V200TH/1P-SC-M	
 A DOVER COMPANY	Created Date	Created By	
	2019-11-06	AU	
Article/Configuration number		Drawing number	
14161-090		AU00540806	



1	4	STUD BOLT M12x20 ART. NO. 45095	M12x20
IT	QTY	DESCRIPTION	Drawing No./Ref
lathe	PDM	PDM	2004-10-12
			General geometrical tolerancing ISO 2768: m
			General surface finish R <sub>a</sub> : 3.2
			Scale 1:1
		<b>B120T/50 BOLT LOC F 4x C140x100</b>	
Article number <b>21118</b>		Drawing number <b>CG450024</b>	
		Revision <b>00</b>	
		Sheet <b>1 (1)</b>	

Rev No.	Alteration	Date	Checked	Approved
10	ADDED DEBURR AND MATERIAL INFO	2009/07/28	RJ	PDM



DEBURR SHARP EDGES; 0.4MAX

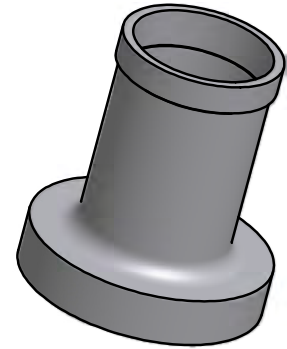
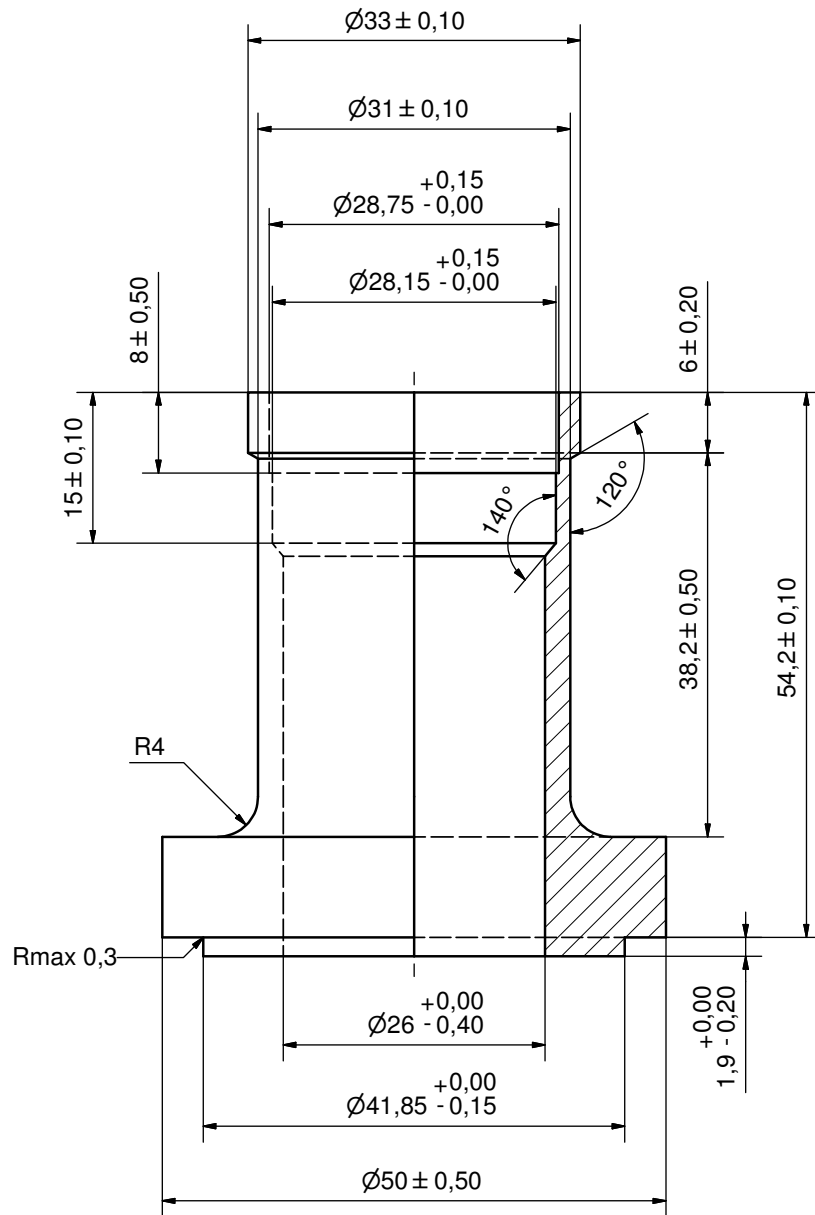
ACCORDING TO MQS  
MATERIAL

Drawn	Checked	Approved	Created Date	General geometrical tolerancing ISO 2768	General surface finish $R_a$	Scale
TM	TP	VP	1993-05-28	m	3.2	-
			<b>Title</b> <b>SOLDER <math>\varnothing 54.3</math> &amp; WELD <math>\varnothing 60</math></b>			
Article number		Drawing number		Revision	Sheet	
-		CD000012		10	1 (1)	

© Company Confidential, Property of SWEP International AB

**AXINTRA**  
ÉCHANGEURS THERMIQUES


Rev No.	Alteration	Date	Checked	Approved
2	ADDED DEBURR & MATERIAL INFO	2009/07/29	AP	PDM



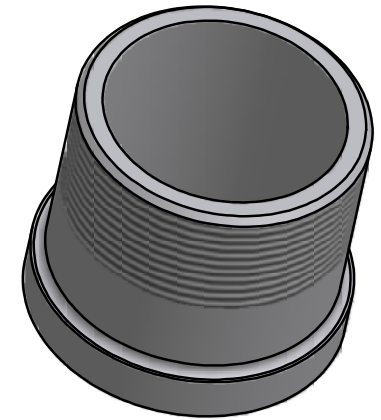
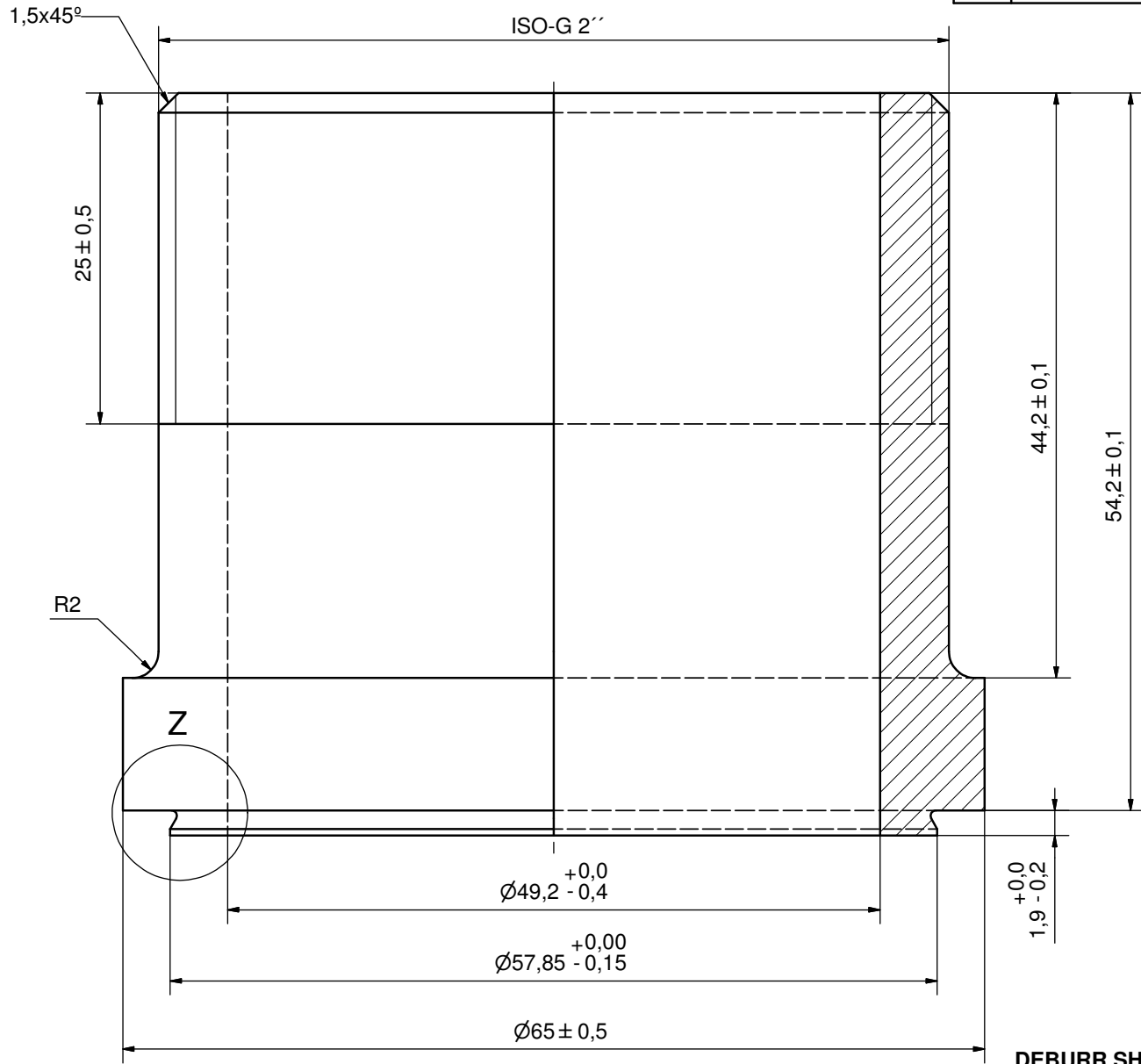
DEBURR SHARP EDGES; MAX 0,4

ACCORDING TO MQS

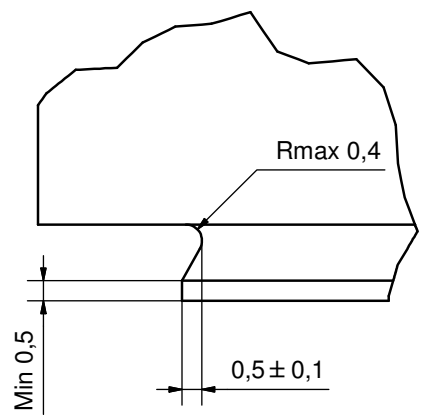
MATERIAL

Drawn EP	Checked JA	Approved PNI	Created Date 2002-11-18	General geometrical tolerancing ISO 2768 m	General surface finish Ra 3.2	Scale 2:1
			Title <b>SOLDER 28U</b>			
Article number -			Drawing number CD000608		Revision 2	Sheet 1 (1)

Rev No.	Alteration	Date	Checked	Approved
4	ADDED DEBURR & MATERIAL INFO	2009/07/22	AP	PDM



Z (8 : 1)



DEBURR SHARP EDGES; MAX 0,4

ACCORDING TO MQS  
MATERIAL

© Company Confidential, Property of SWEP International AB



Drawn	Checked	Approved	Created Date	General geometrical tolerancing ISO 2768	General surface finish $R_a$	Scale
RJ	EG	BOS	1997-02-17	m	3.2	3:1
			<b>ISO-G 2" A</b>			
Article number		Drawing number		Revision	Sheet	
-		CD000322		4	1 (1)	