

# BDW16DW

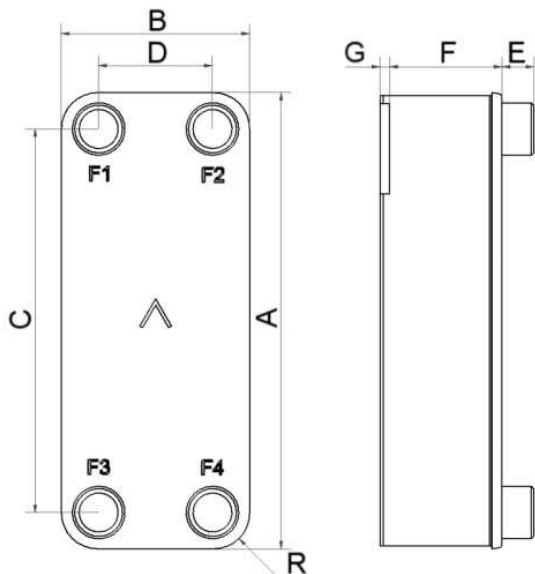
Ce produit à double paroi est conçu pour les applications exigeant une efficacité thermique élevée et une détection de fuite avancée. Sa conception offre les mêmes avantages que les autres BPHE de SWEP en termes de performance et de compacité.



## Spécifications de base

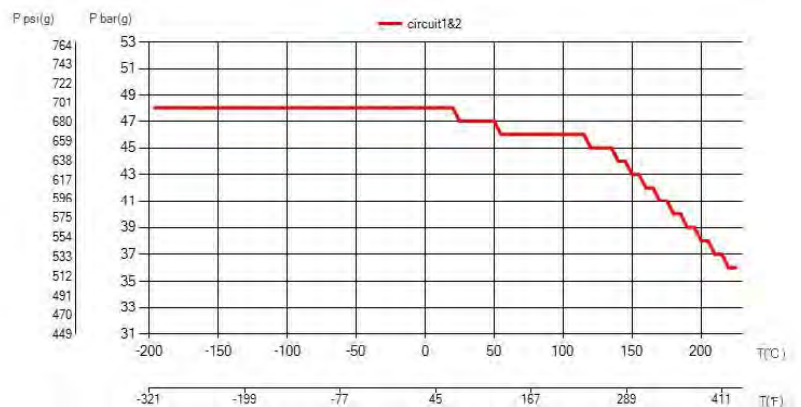
Nombre de plaques max. (NoP)	140
Débit volumétrique max.	11,3 m <sup>3</sup> /h (13.21 gpm)
Volume du canal	0.061/0.061 dm <sup>3</sup> (0.0022/0.0022 ft <sup>3</sup> )
Matières	Plaques en acier inoxydable 316, brasage cuivre
Poids sans les connexions	1.55+(0.22*NoP) kg 3.42+(0.485*NoP) lb

## Les dimensions standard



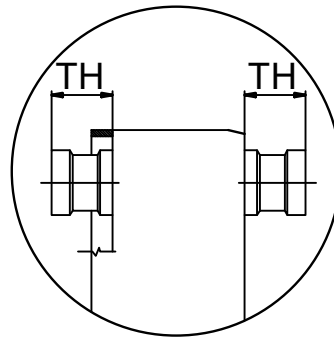
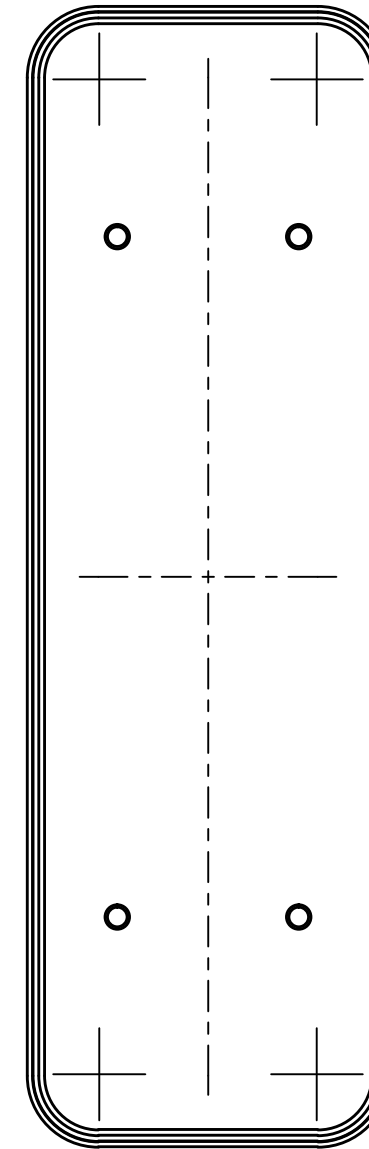
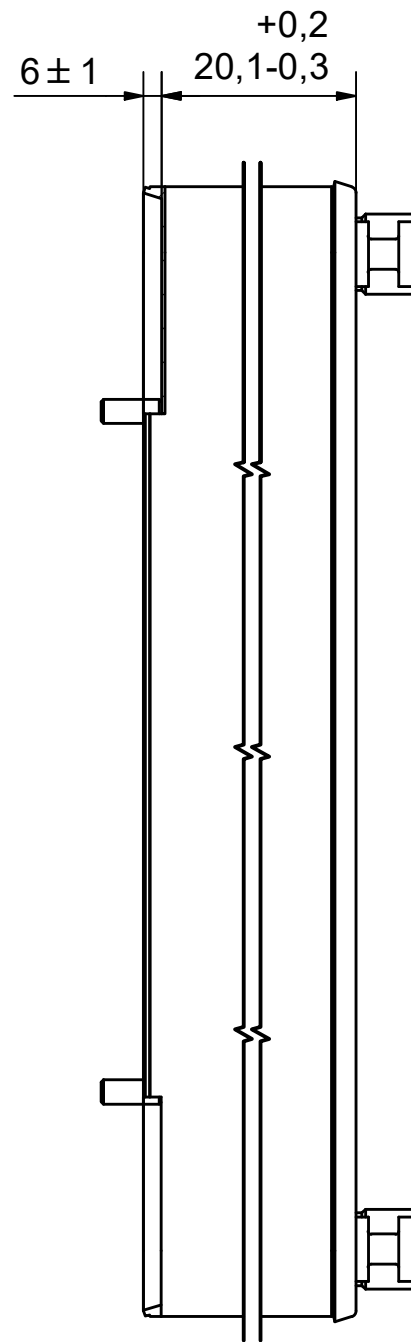
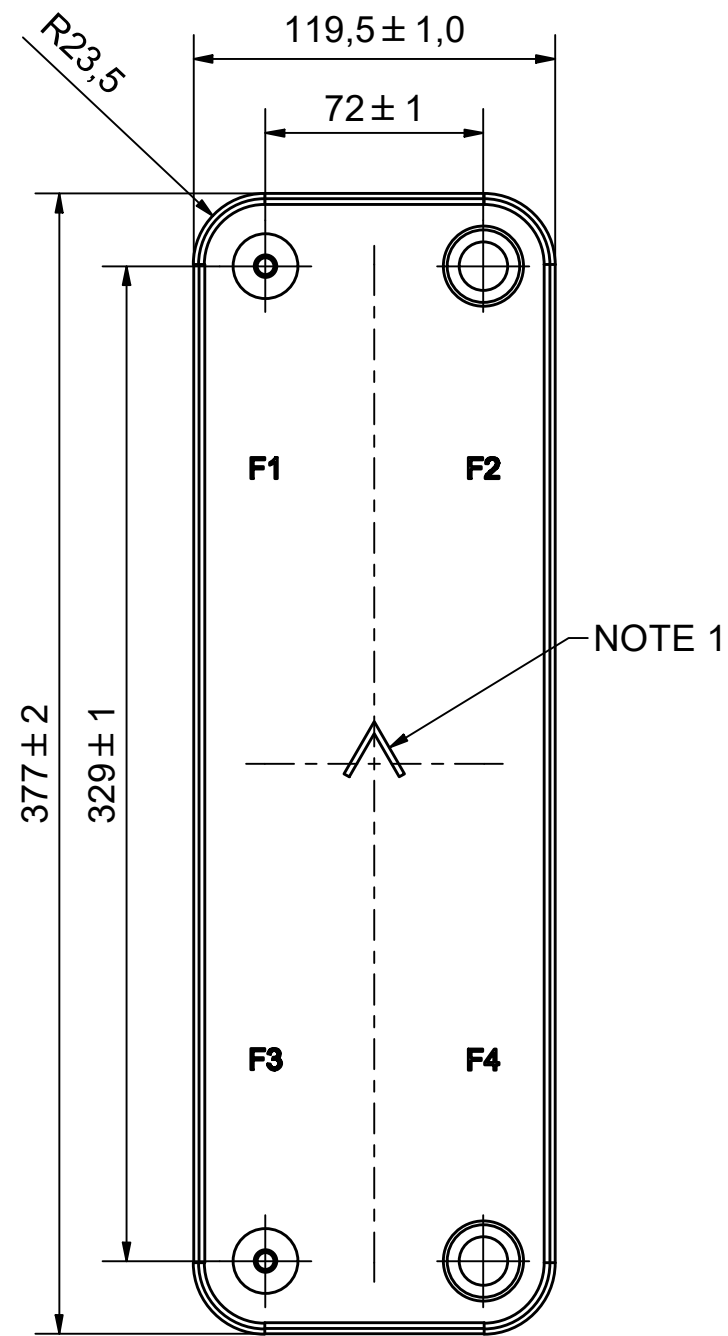
#	MM	IN
A	377	14.84
B	119.50	4.7
C	329	12.95
D	72	2.83
F	4.00+2.01*(NoP)	0.16+0.08*(NoP)
G	6	0.24
R	23.50	0.93
E_1	20	0.79

## PED pression / température



**AXINTRA**


ÉCHANGEURS THERMIQUES



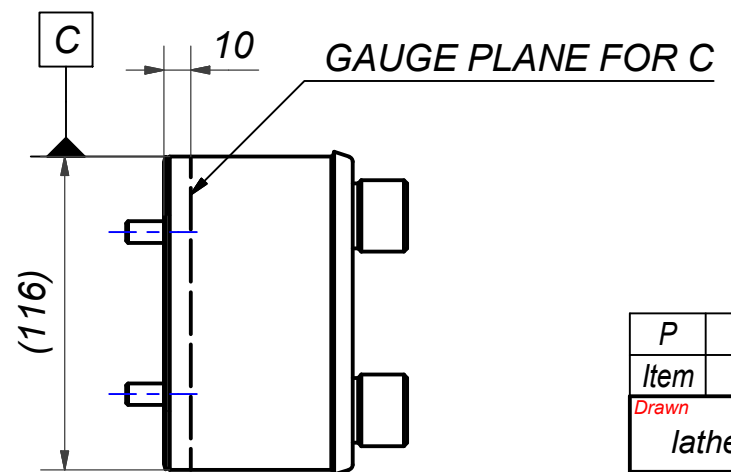
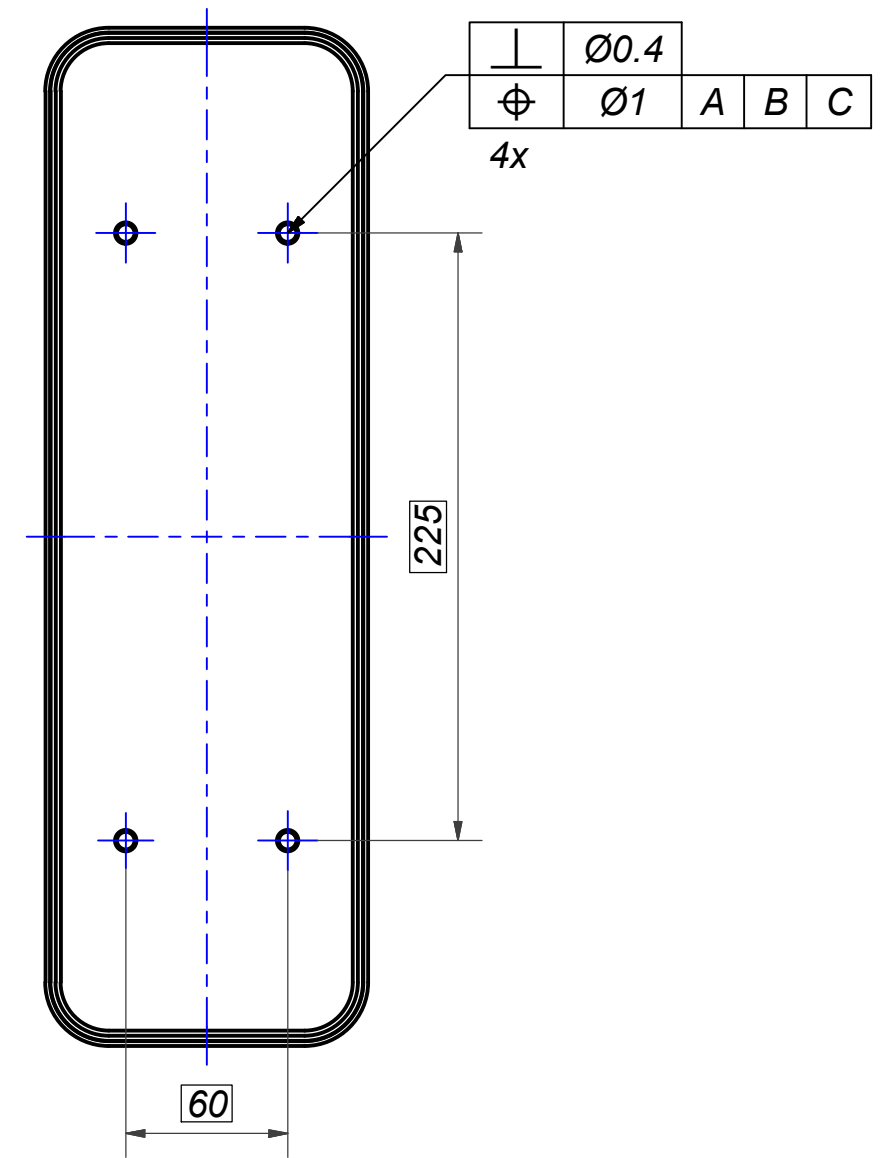
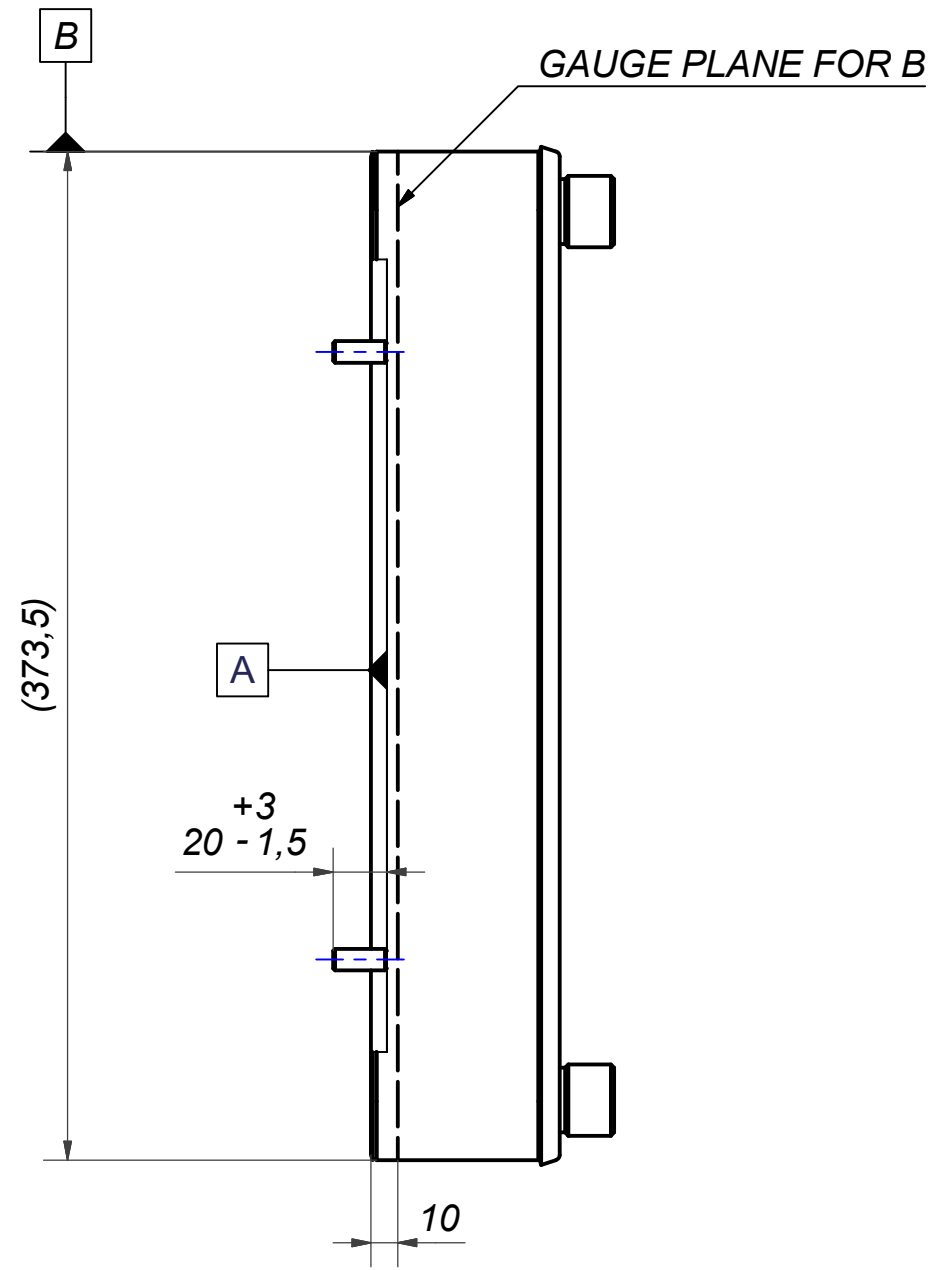
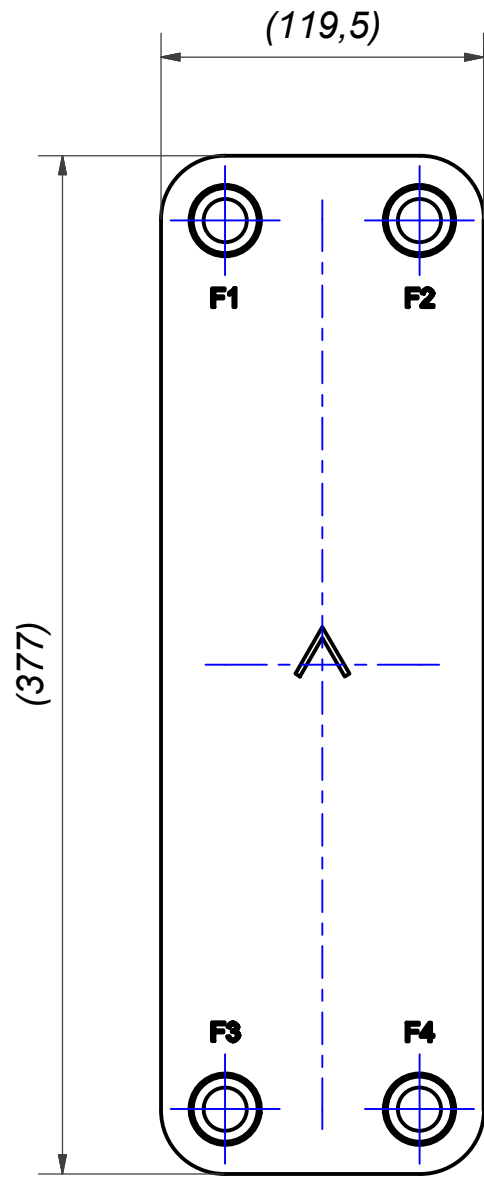
**AXINTRA**  
ÉCHANGEURS THERMIQUES

**NOTE 1: ALTERNATE MARKING STICKER OR STAMP**

F4	45048	ISO-G 3/4 A, TH = 20,1	CD000035				
F3	45218	SOLDER $\phi 6,5$ , TH = 20,1	CD000107				
F2	45048	ISO-G 3/4 A, TH = 20,1	CD000035				
F1	45218	SOLDER $\phi 6,5$ , TH = 20,1	CD000107	P	21476	B16DW S B LOC P 4xC225x60	CG161002_1
Pos	Article No	Title / Denomination, code, material, dimension etc	Drawing No./ref	Pos	Article No	Title / Denomination, code, material, dimension etc	Drawing No./ref

Title <b>B16DWHx8/1P-SC-M 2x6.5+2x3/4"</b>			
 A DOVER COMPANY		Created Date 2024-06-27	Created By AU
		Article/Configuration number 0140992.1	Drawing number AU00051711_0140992.1

Rev No	Alteration	Date	Checked	Approved
01	Updated drawing. Added size "18" to Title.	2019-03-21	SKDS	PDM

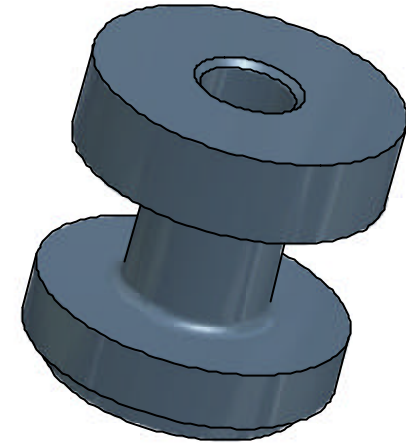
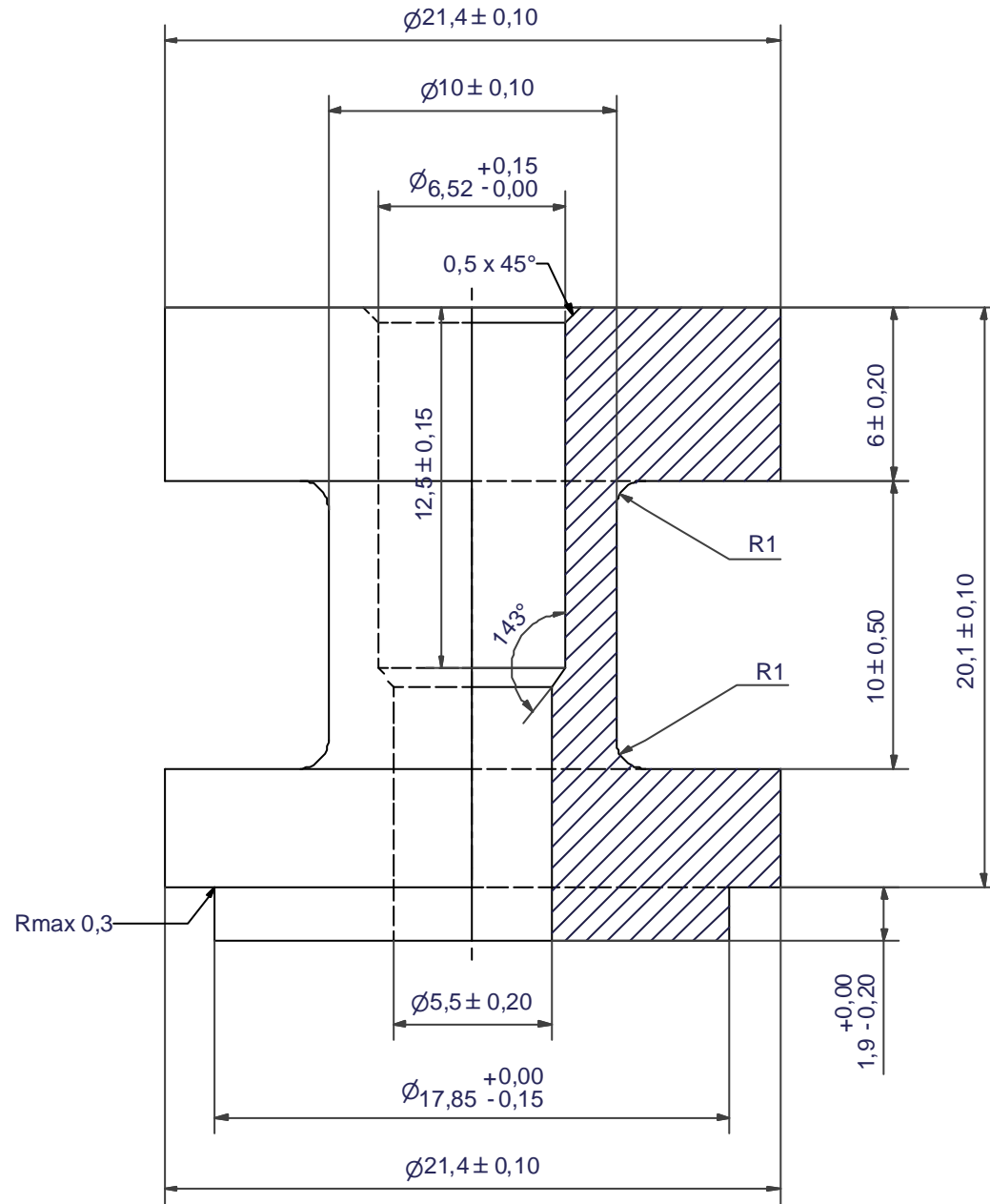


P	4	STUD BOLT M8 x 20, ART. NO. 45162				M8x20
Item	QTY	Description				Drawing/Article
Drawn	Checked	Approved	Created Date	General geometrical tolerancing ISO 2768:	General surface finish $R_a$ :	Scale
lathe	PDM	PDM	2005-12-06			1:2,8
		<b>16DW/18 STUD BOLT LOC P 4xC225x60</b>				Paper size
		Article number	Design Type	Drawing number	Revision	Sheet
		21476	CG	CG161002	01	1 (1)






Rev No.	Alteration	Date	Checked	Approved
8	REDRAWN IN INVENTOR	2004/07/14	TN	PDM



© Company Confidential, Property of SWEP International AB

Drawn	Checked	Approved	Created Date	General geometrical tolerancing ISO 2768	General surface finish $R_p$	Scale
HR	EG	VP	1990/11/13	m	3.2	6:1
			<b>SOLDER <math>\varnothing 6,5</math></b>			
Article number		Drawing number		Revision	Sheet	
-		CD000107		8	1 (1)	