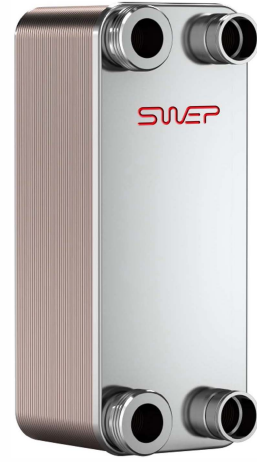


# B10T

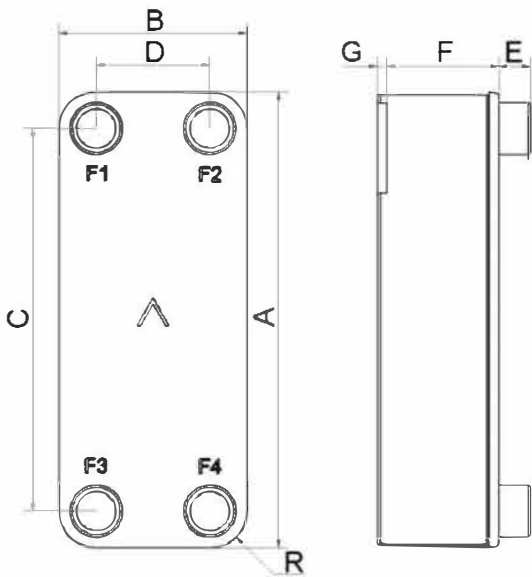
Le B10T offre des solutions d'échange thermique dans un large éventail de capacités. Son adaptation à de nombreuses applications est rapide et simple. Par sa compacité, sa polyvalence, son excellent transfert thermique, ce produit est le choix idéal pour des applications monophasiques et de réfrigération.



## Spécifications de base

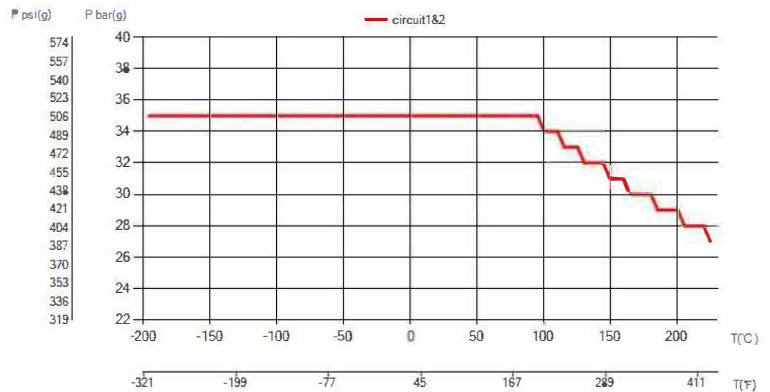
Nombre de plaques max. (NoP)	140
Débit volumétrique max.	9 m³/h (39.63 gpm)
Volume du canal	0.061/0.061 dm³ (0.0022/0.0022 ft³)
Matières	Plaques en acier inoxydable 316, brasage cuivre
Poids sans les connexions	1.15+(0.096*NoP) kg 2.54+(0.212*NoP) lb

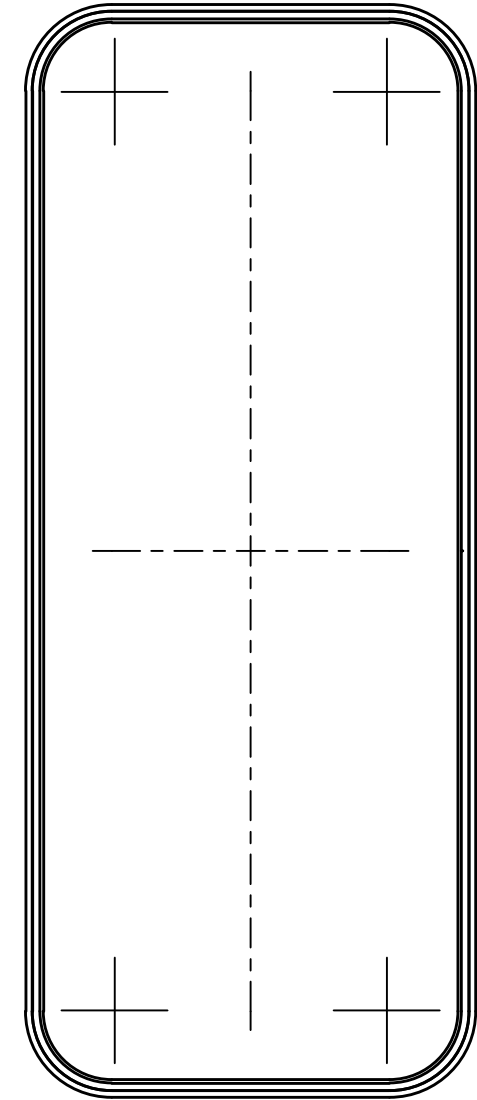
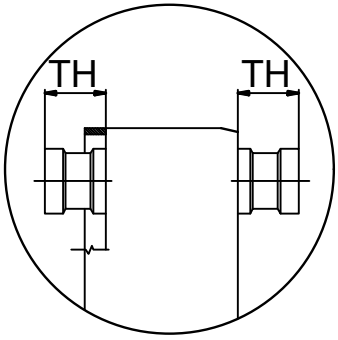
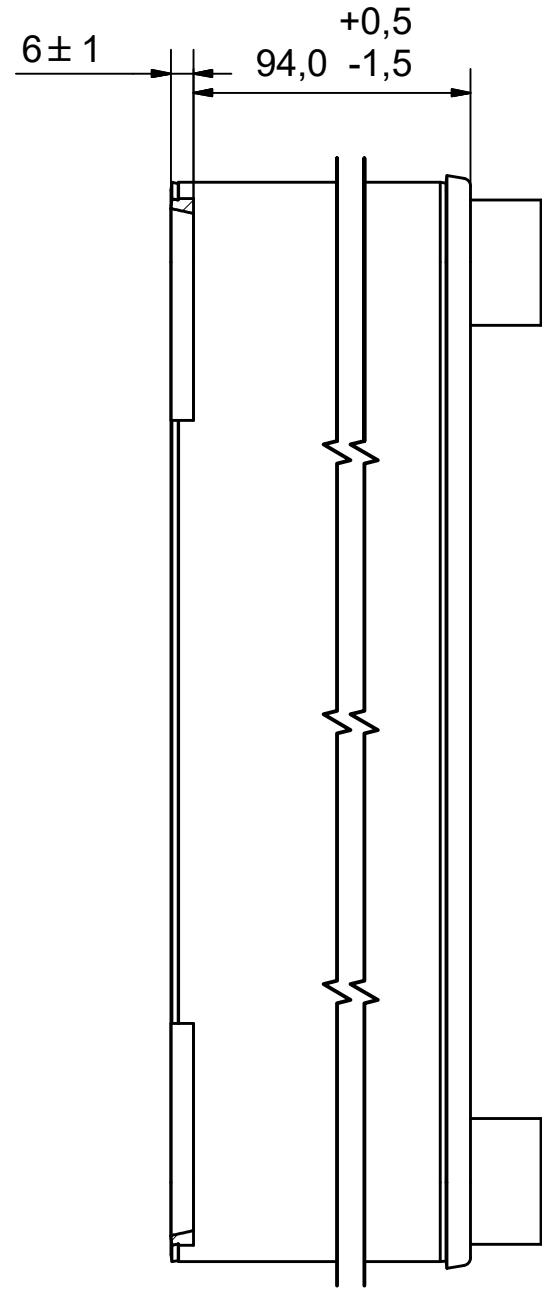
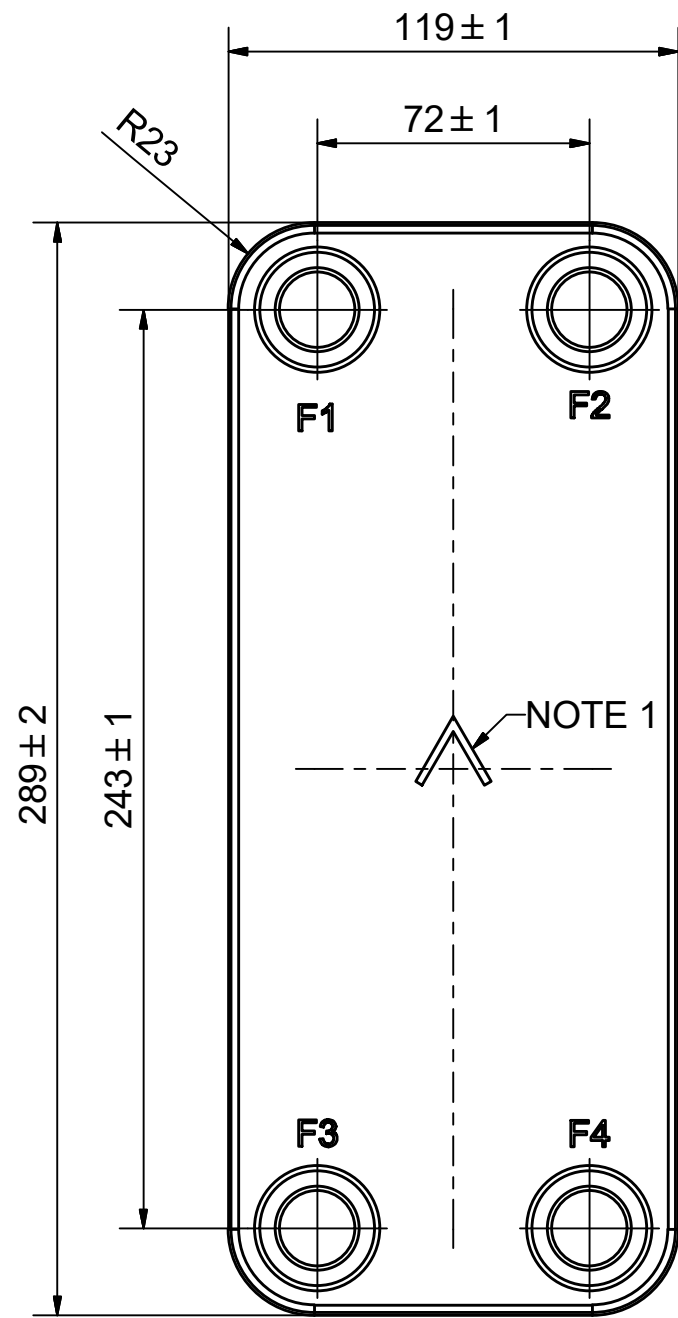
## Les dimensions standard



#	MM	IN
A	289	11.38
B	119	4.69
C	243	9.57
D	72	2.83
F	4.00+2.24*(NoP)	0.16+0.09*(NoP)
G	6	0.24
R	22	0.87
E_1	20	0.79

## PED pression / température





NOTE 1 ALTERNATE MARKING: STICKER OR STAMP

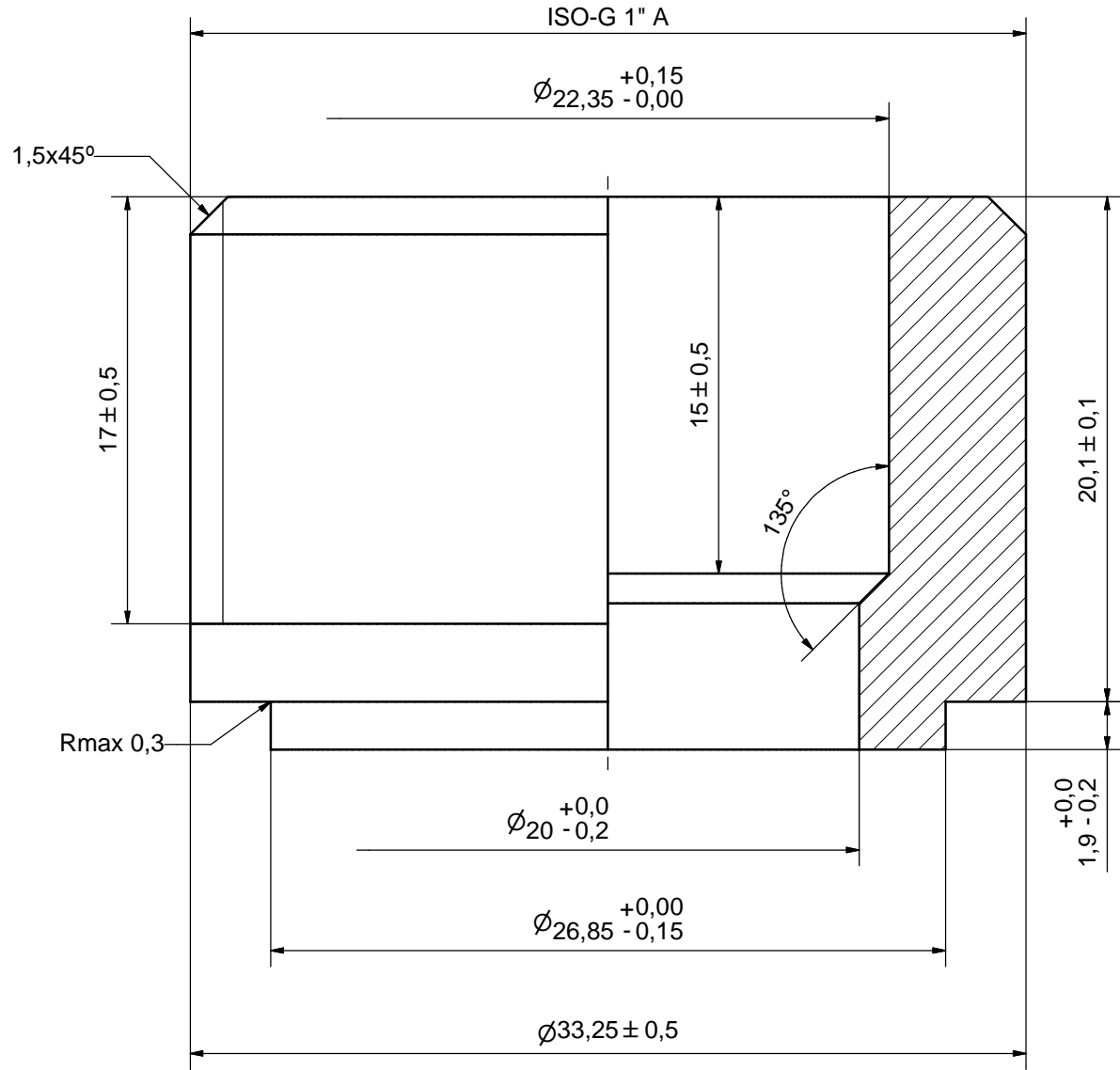
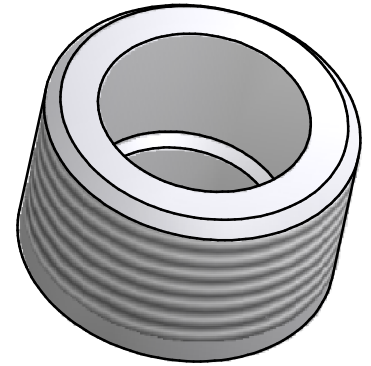
F4	32566	ISO-G 1" A & SOLDER 22U, TH = 20.1	CD000806
F3	32566	ISO-G 1" A & SOLDER 22U, TH = 20.1	CD000806
F2	32566	ISO-G 1" A & SOLDER 22U, TH = 20.1	CD000806
F1	32566	ISO-G 1" A & SOLDER 22U, TH = 20.1	CD000806



Title		B10TH/1P-SC-S	
Created Date		2/24/2022	Created By
Article/Configuration number		14057-040	Drawing number
			AU00684467_14057-040



Rev No.	Alteration	Date	Checked	Approved
1	CHANGED DENOMIATION	2007/05/28	ANL	PDM



ACCORDING TO MQS  
MATERIAL



Drawn	Checked	Approved	Created Date	General geometrical tolerancing ISO 2768	General surface finish $R_a$	Scale
THE	PDM	PDM	2006/05/09	m	3.2	5:1
Title <b>ISO-G 1" A &amp; SOLDER 22U</b>						
Article number -		Drawing number CD000806		Revision 1		Sheet 1 (1)