

B10TS- All Stainless

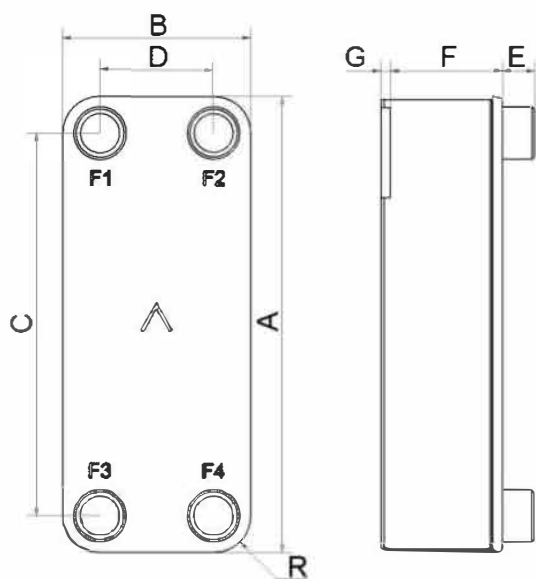
Le modèle B10TS propose des solutions d'échange thermique pour une large fourchette de capacités. Son adaptation à de nombreuses applications est rapide et simple. Les dimensions compactes de ce modèle, sa polyvalence et son excellent transfert thermique en font un choix idéal pour les applications à une phase et de réfrigération.



Spécifications de base

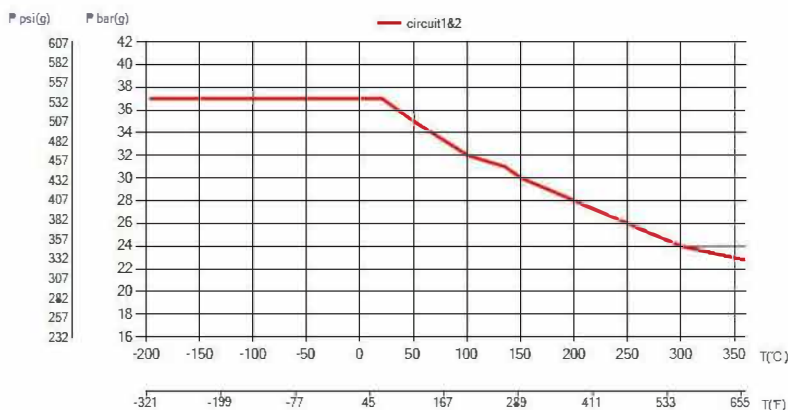
Nombre de plaques max. (NoP)	140
Débit volumétrique max.	9 m ³ /h (39.63 gpm)
Volume du canal	0.061/0.061 dm ³ (0.0022/0.0022 ft ³)
Matières	Plaques en acier inoxydable 316, brasage acier inoxydable
Poids sans les connexions	1.24+(0.121*NoP) kg 2.73+(0.267*NoP) lb

Les dimensions standard



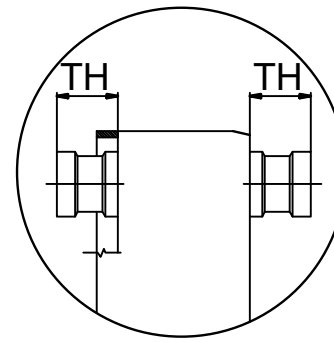
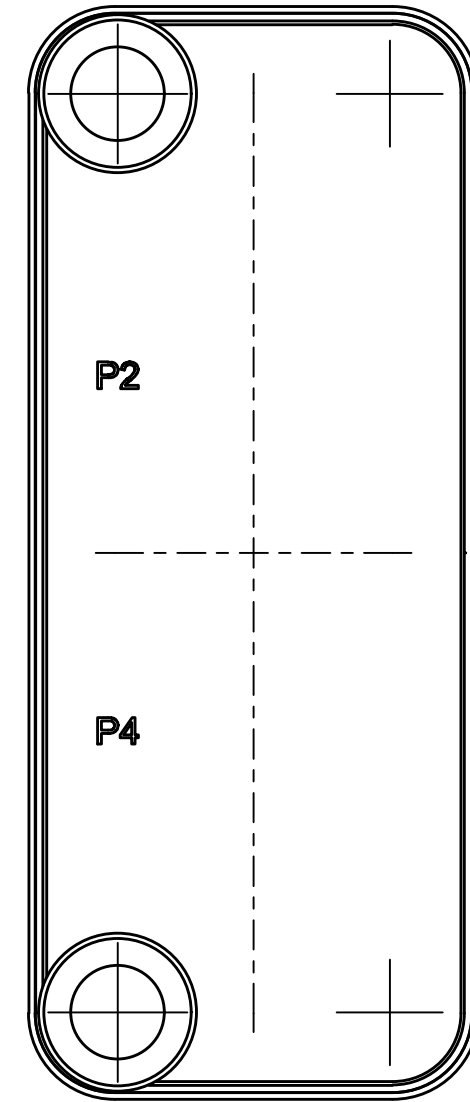
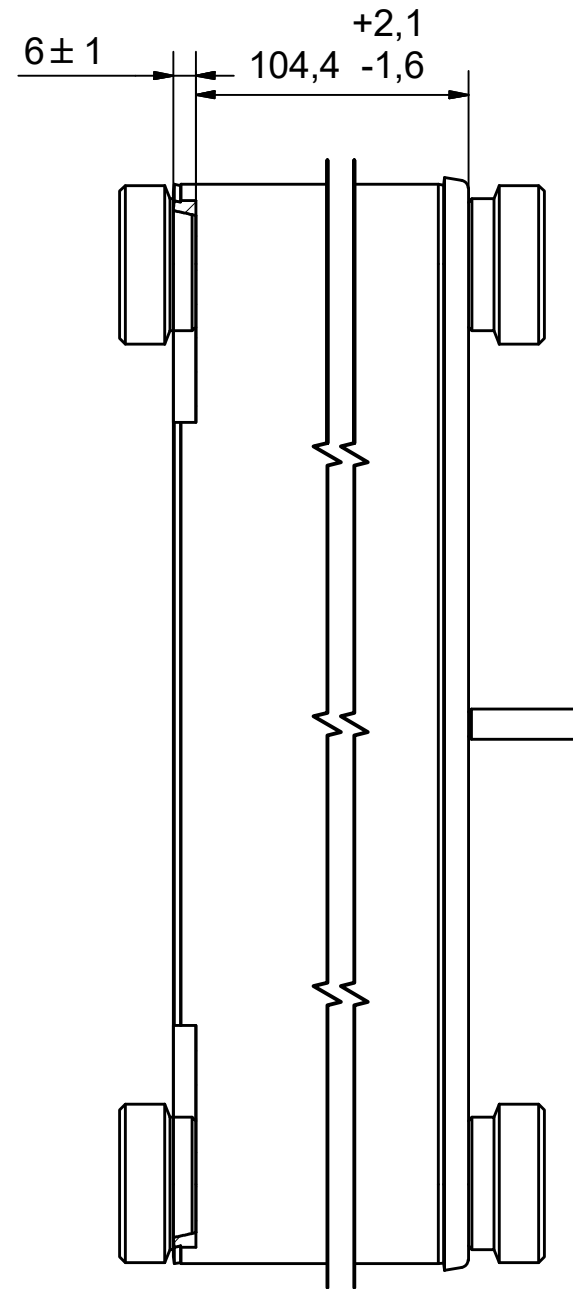
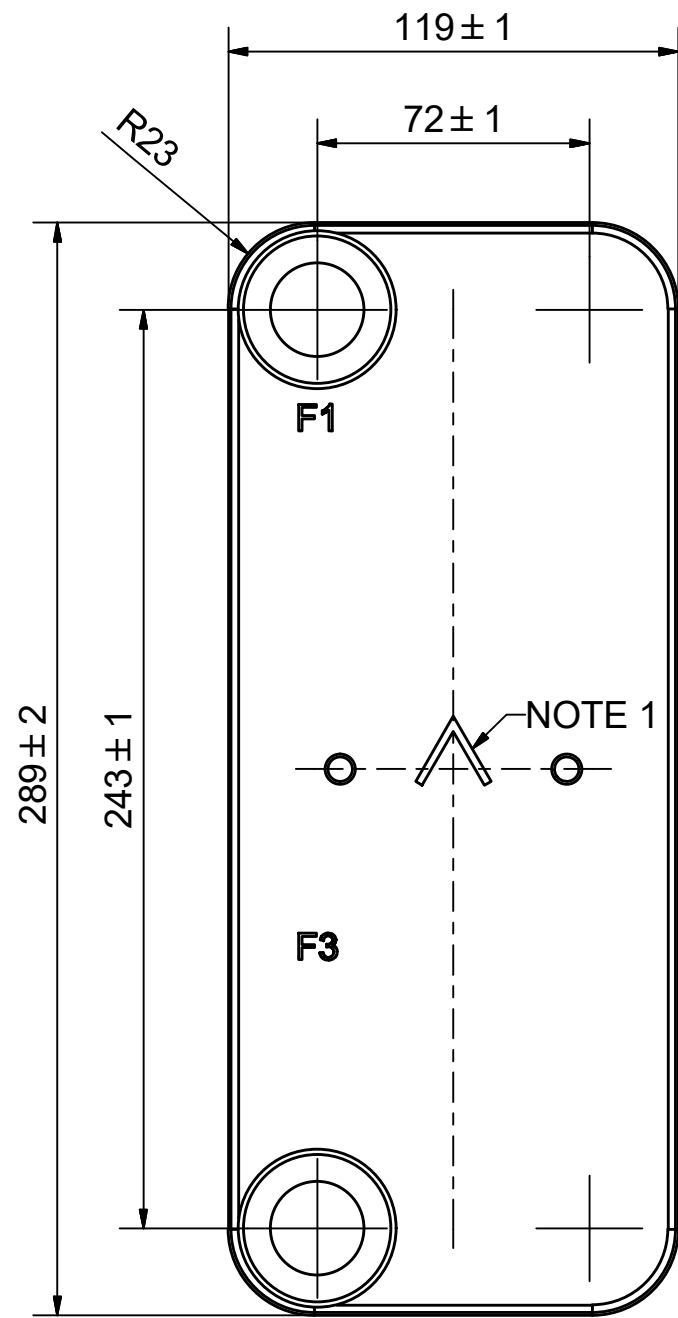
#	MM	IN
A	289	11.38
B	119	4.69
C	243	9.57
D	72	2.83
F	4.00+2.39*(NoP)	0.16+0.09*(NoP)
G	6	0.24
R	23	0.91
E_1	20	0.79

PED pression / température



AXINTRA


ÉCHANGEURS THERMIQUES

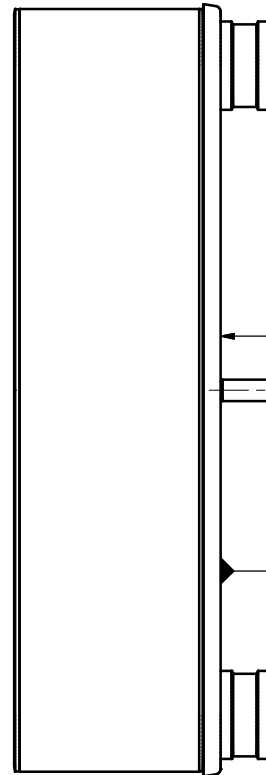
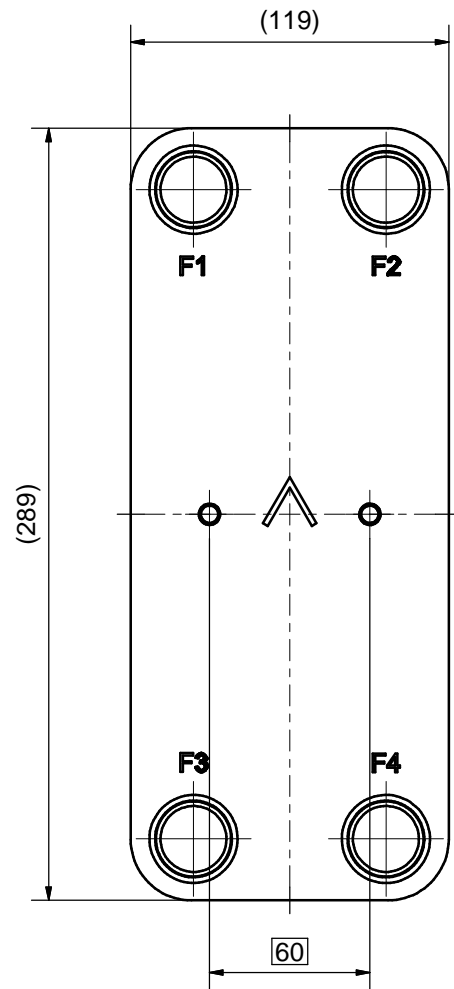


NOTE 1 ALTERNATE MARKING: STICKER OR STAMP

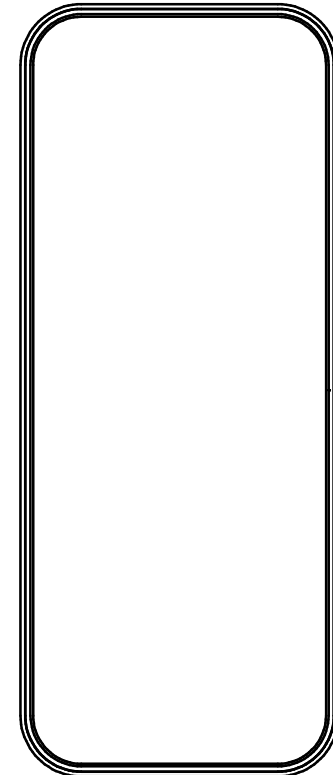
AXINTRA
ÉCHANGEURS THERMIQUES


Pos	Article No	Title / Denomination, code, material, dimension etc	Drawing No./ref	Pos	Article No	Title / Denomination, code, material, dimension etc	Drawing No./ref
F3	45071	ISO-G 1 1/4 A, TH = 20,1	CD000045				
F1	45071	ISO-G 1 1/4 A, TH = 20,1	CD000045	P4	45071	ISO-G 1 1/4 A, TH = 20,1	CD000045
F	21586	B10 BOLT LOC F 6xC70/70x60	CG100105	P2	45071	ISO-G 1 1/4 A, TH = 20,1	CD000045

Title B10TSHx42/1P-SPS-S 2x1 1/4" / 2x1 1/4"			
 A DOVER COMPANY		Created Date 2023-12-18	Created By AU
		Article/Configuration number 0246153.0	Drawing number AU00772912_0246153.0

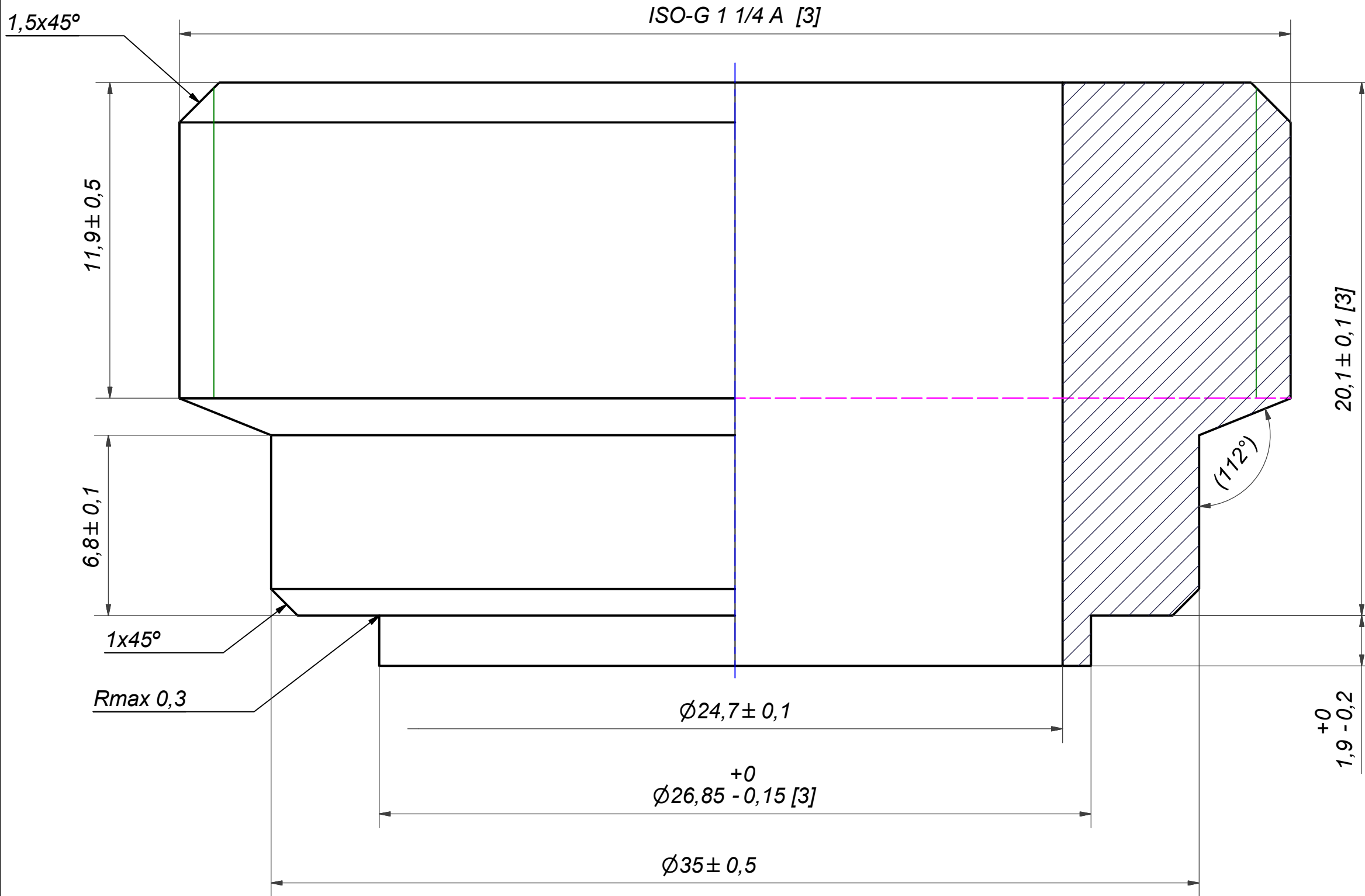


$\frac{\perp}{\oplus}$	$\varnothing 0,4$	A
\varnothing	$\varnothing 1$	



1	2	STUD BOLT M8x30 ART.NO 45695				M8x30
IT	QTY	DESCRIPTION				Drawing No.
Drawn	Checked	Approved	Created Date	General geometrical tolerancing ISO 2768	General surface finish R_a	Scale
MC	PDM	PDM	2007/08/20	m	3.2	1:2
			Title B10T STUD B. LOC F 2xCH60			
Article number 21586		Drawing number CG100105		Revision -	Sheet 1 (1)	

Rev No	Alteration	Date	Checked	Approved
15	ECN-000223: update of thread designation	2019-09-10	10011384	PDM



NOTE 2: [3] - CRITICAL/SPECIAL CHARACTERISTIC TO BE FOLLOWED

NOTE 1: DEBURR SHARP EDGES; MAX 0.4

ACCORDING TO MQS

MATERIAL

Drawn	Checked	Approved	Created Date	General geometrical tolerancing ISO 2768:	General surface finish R_a :	Scale	Paper size
miguser	PDM	PDM	1990-09-08	mK	3.2	-	A3
			Title				
			ISO-G 1 1/4 A				
			Article number	Design Type	Drawing number	Revision	Sheet
				CD	CD000045	15	1 (1)