

B12

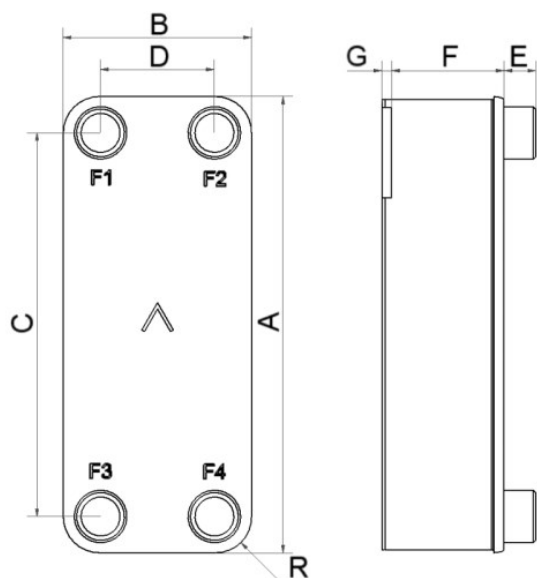
Avec ses larges ports, le B12 apporte des solutions de transfert thermique adaptées aux débits importants. Il est disponible avec différents agencements de plaques pour répondre aux besoins d'une gamme étendue de viscosités et densités des fluides. Le B12 est un excellent choix pour les applications exigeantes comme la vapeur et les dessiccateurs d'air. Il peut servir de désurchauffeur dans un système de climatisation et de CO2 sous refroidisseur gaz pour système de réfrigération.



Spécifications de base

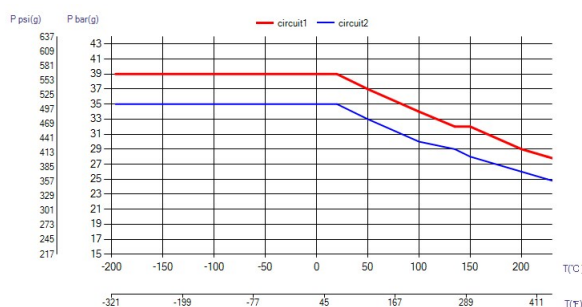
Nombre de plaques max. (NoP)	140
Débit volumétrique max.	16,9 m³/h (39.63 gpm)
Volume du canal	0.063/0.063 dm³ (0.0022/0.0022 ft³)
Matières	Plaques en acier inoxydable 316, brasage cuivre
Poids sans les connexions	1.12+(0.12*NoP) kg 2.47+(0.265*NoP) lb

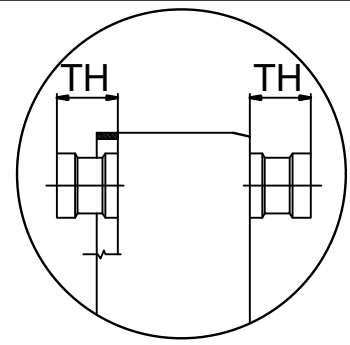
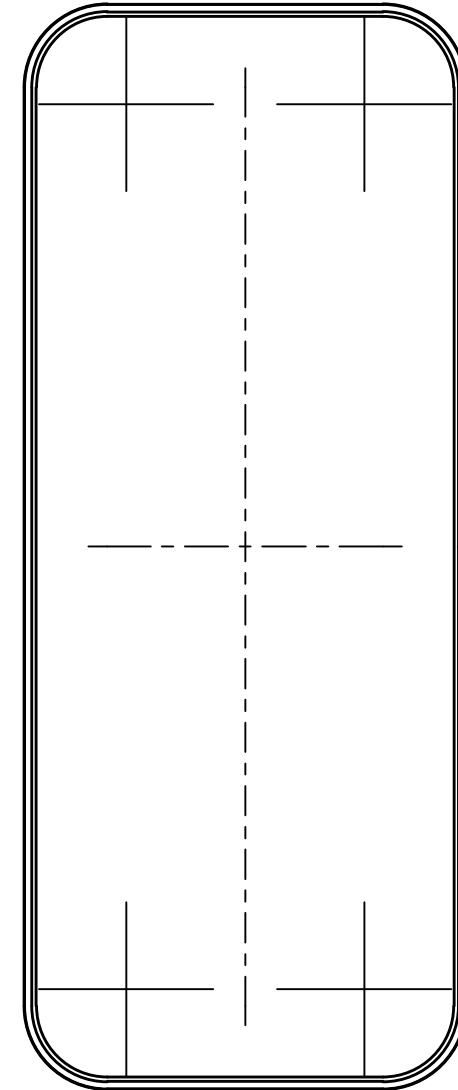
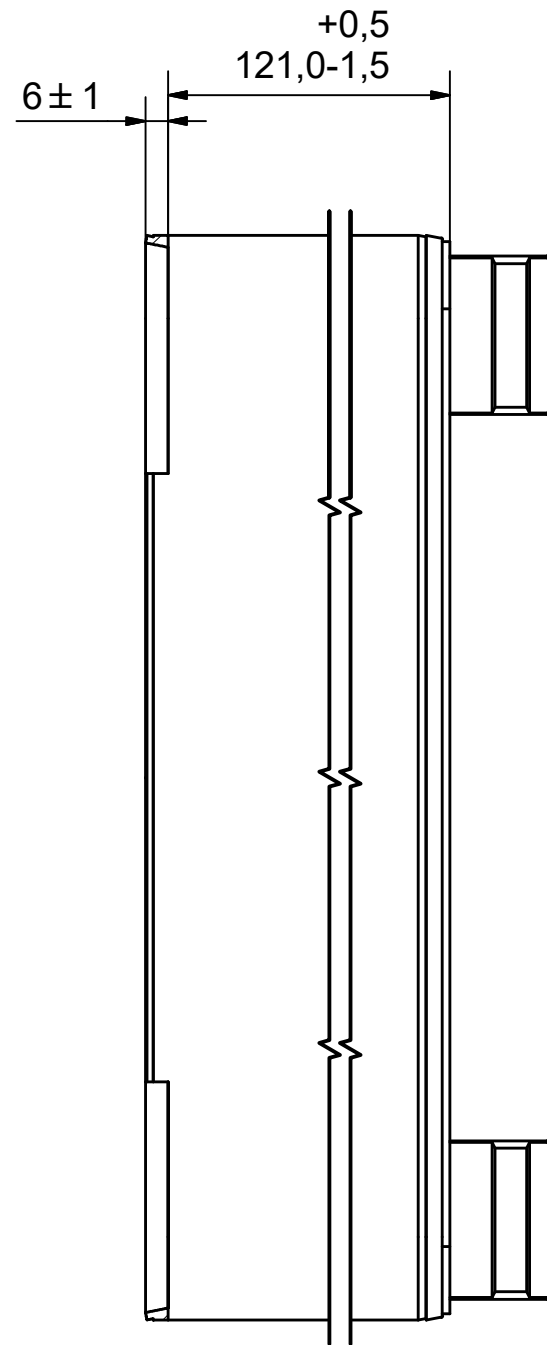
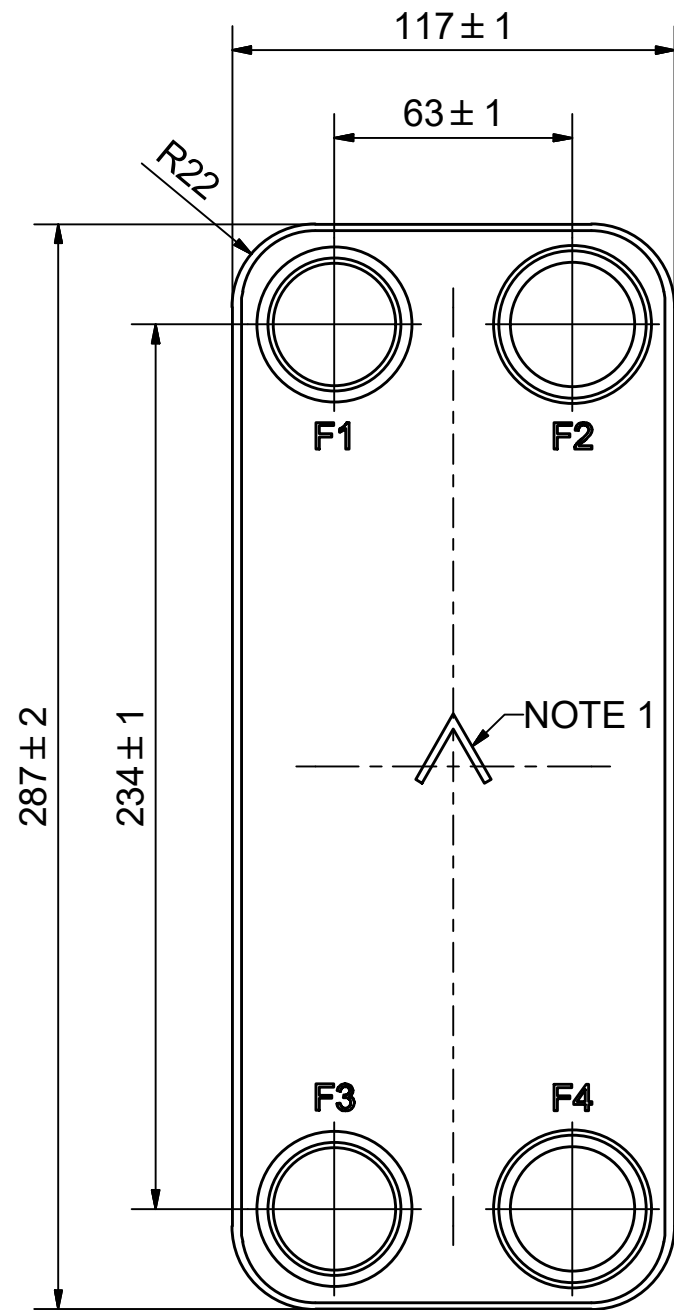
Les dimensions standard



#	MM	IN
A	287	11.3
B	117	4.61
C	234	9.21
D	63	2.48
F	4.40+2.34*(NoP)	0.17+0.09*(NoP)
G	6	0.24
R	22	0.87
E_1	27	1.06

PED pression / température







AXINTRA

ÉCHANGEURS THERMIQUES

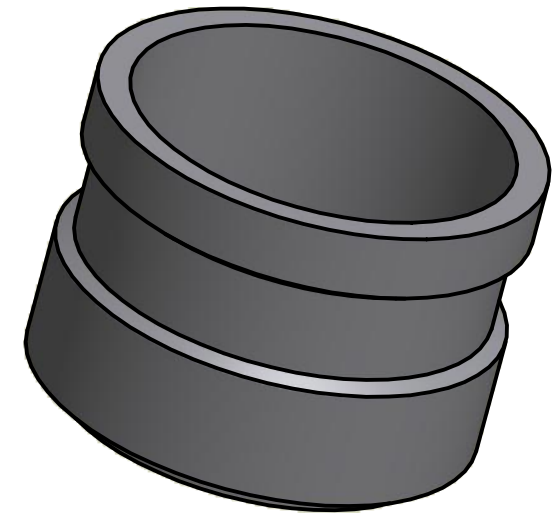
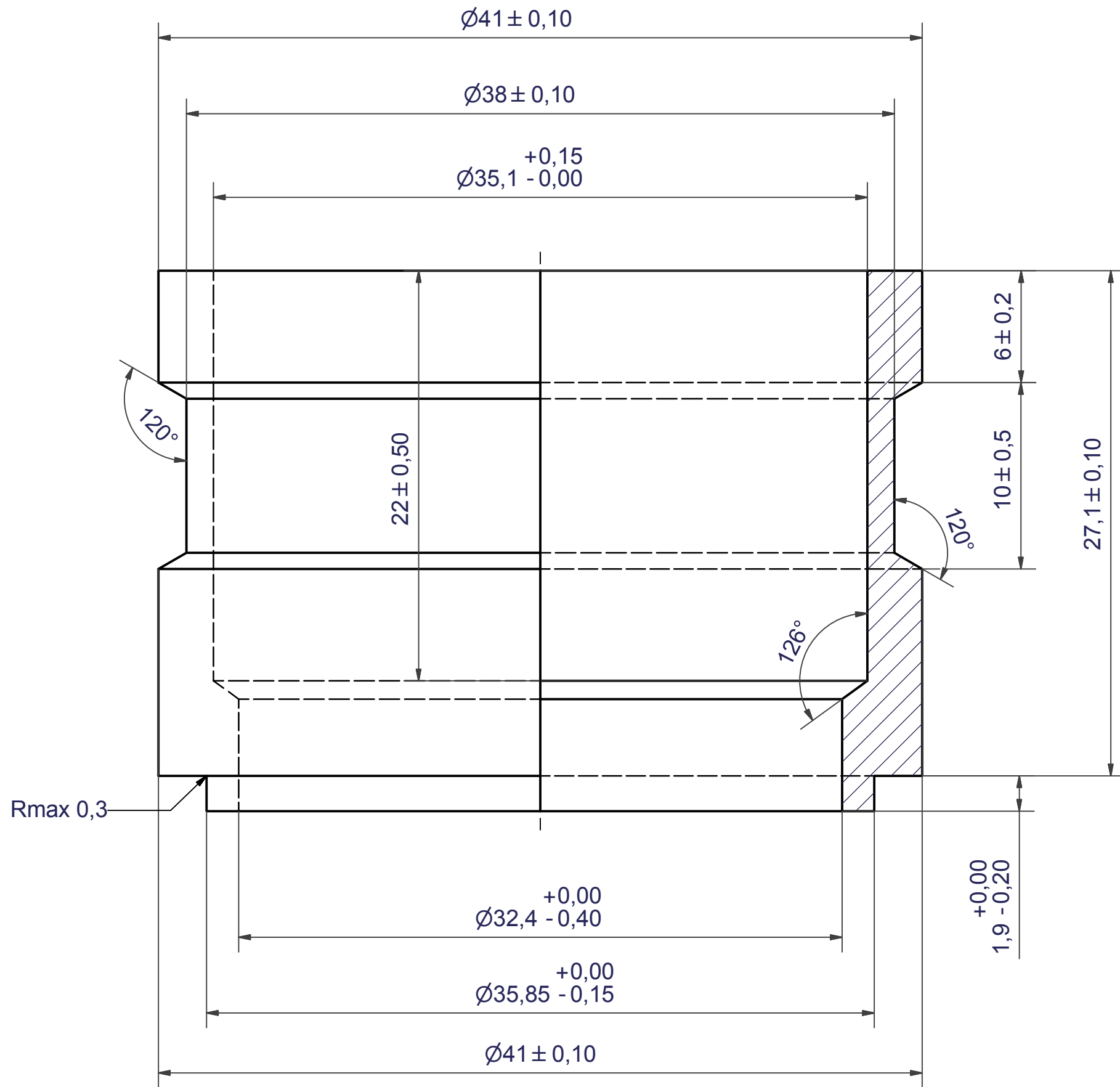
F4	45609	ISO-G 1 1/4" A, TH = 27.1	CD000193
F3	45608	SOLDER ø35,1, TH = 27.1	CD000192
F2	45609	ISO-G 1 1/4" A, TH = 27.1	CD000193
F1	45608	SOLDER ø35,1, TH = 27.1	CD000192

NOTE 1 ALTERNATE MARKING: STICKER OR STAMP

Pos	Article No	Title / Denomination, code, material, dimension etc	Drawing No./ref	Pos	Article No	Title / Denomination, code, material, dimension etc	Drawing No./ref
-----	------------	---	-----------------	-----	------------	---	-----------------

Title		B12H/1P-SC-S	
 A DOVER COMPANY	Created Date	Created By	
	12/20/2021	AU	
	Article/Configuration number	Drawing number	
	11011-050	AU00675964_11011-050	

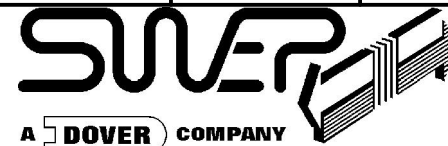
Rev No.	Alteration	Date	Checked	Approved
4	REDRAWN IN INVENTOR	2004/07/14	TN	PDM



© Company Confidential, Property of SWEP International AB

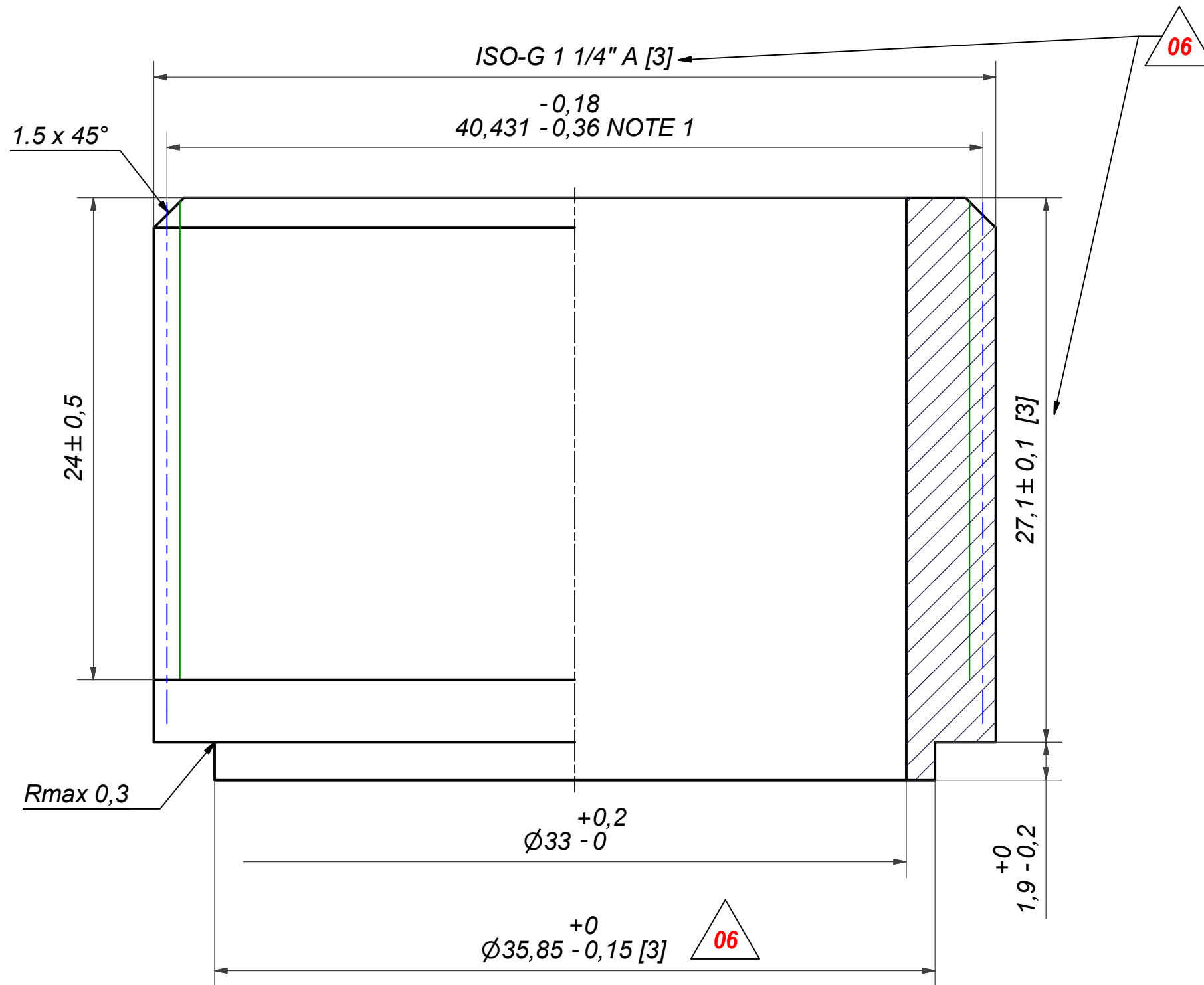
AXINTRA
ÉCHANGEURS THERMIQUES

Drawn lathe	Checked HR	Approved BOS	Created Date 1994-11-18	General geometrical tolerancing ISO 2768	General surface finish R_a	Scale -
Title SOLDER $\varnothing 35,1$			Article number	Drawing number CD000192	Revision 04	Sheet 1 (1)



SWEP MANUFACTURING

Rev No	Alteration	Date	Checked	Approved
06	CHANGED DESIGN ACCORDING TO RD100699	2013-04-12	SKZE	miguser



NOTE 1: ADDITIONAL REQUIREMENT ON ISO 228/1 THREAD
 PERMISSIBLE TOLERANCE ON PITCH DIAMETER
 NOTE 2: DEBURR SHARP EDGES: MAX 0,4

ACCORDING TO MQS
 MATERIAL

Drawn miguser	Checked miguser	Approved miguser	Created Date 1994-11-18	General geometrical tolerancing ISO 2768: m	General surface finish R_a : 3.2	Scale -	Paper size A3
Title ISO-G 1 1/4" A			Article / Tool number CD	Design Type CD	Drawing number CD000193	Revision 06	Sheet 1 (2)

AXINTRA
 ÉCHANGEURS THERMIQUES

SWEP
 A DOVER COMPANY