

B80S- All Stainless

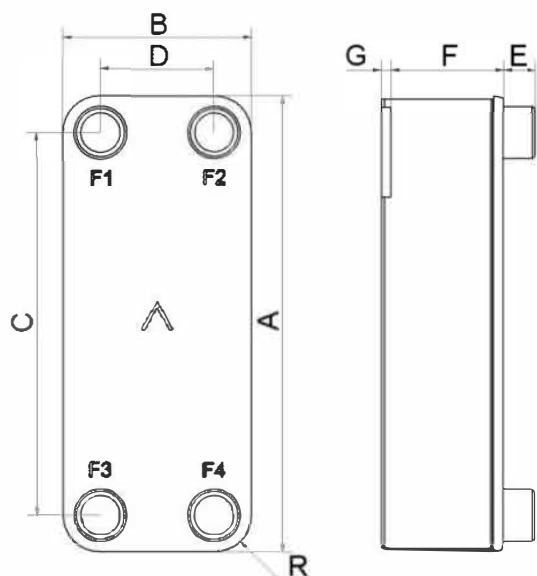
Le B80S est notre modèle haute capacité de la gamme d'échangeurs de taille moyenne. Il est le choix idéal pour la plupart des types d'applications de refroidisseur à basse capacité et des pompes à chaleur haute performance. Il couvre une large gamme de capacités dans les sous-stations de chauffage collectif et il est un refroidisseur d'huile éprouvé pour les compresseurs et composants hydrauliques.



Spécifications de base

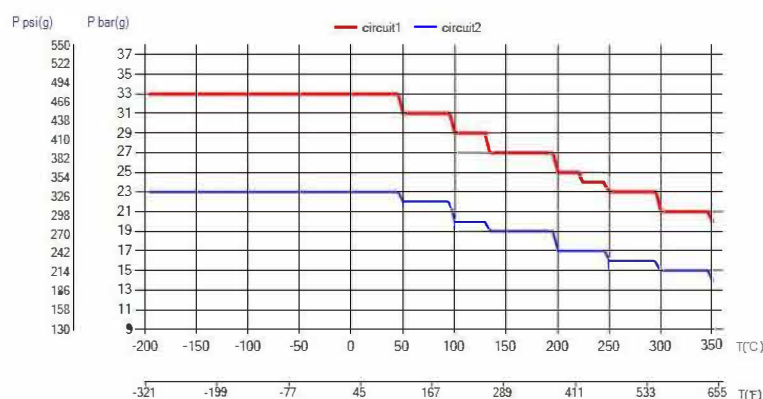
Nombre de plaques max. (NoP)	140
Débit volumétrique max.	17 m³/h (74.85 gpm)
Volume du canal	0.107/0.107 dm³ (0.0038/0.0038 ft³)
Matières	Plaques en acier inoxydable 316, brasage acier inoxydable
Poids sans les connexions	2.18+(0.231*NoP) kg 4.80+(0.509*NoP) lb

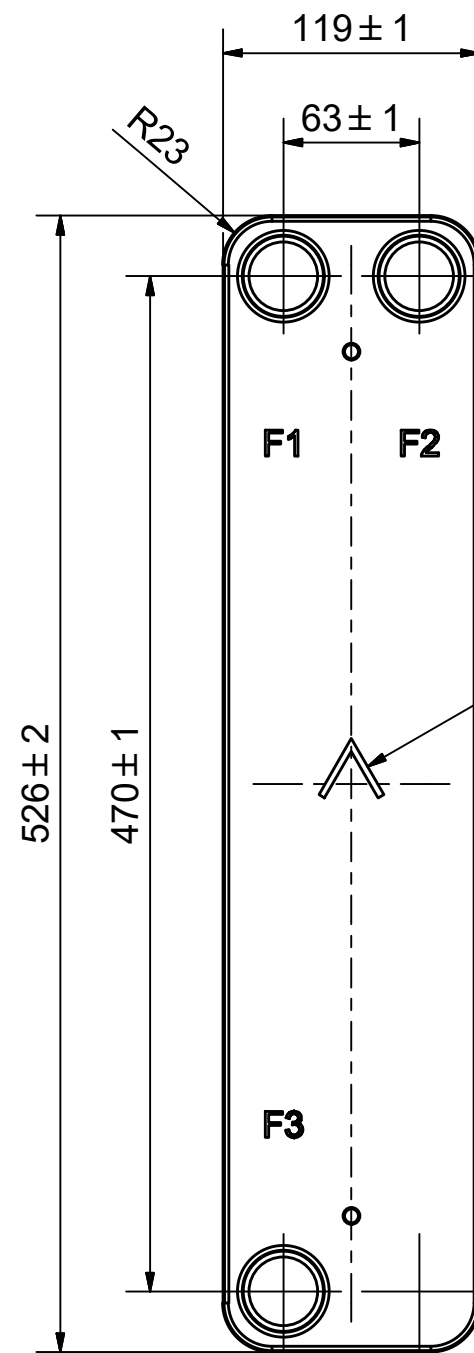
Les dimensions standard



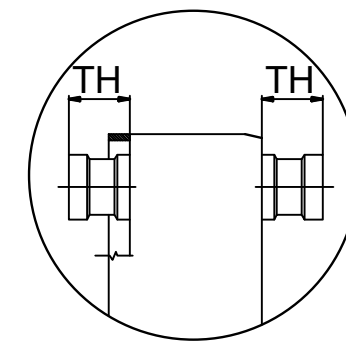
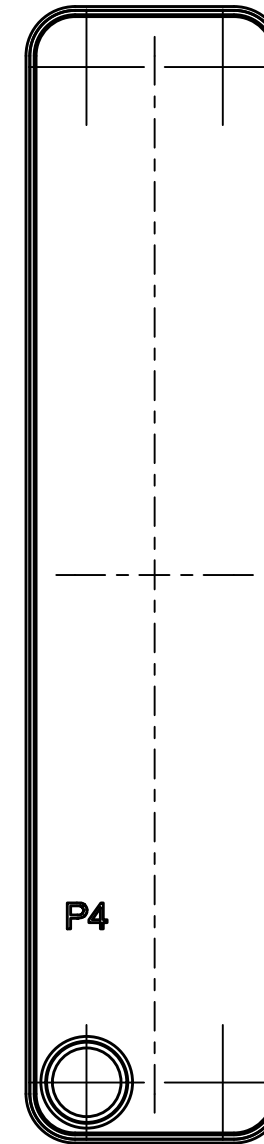
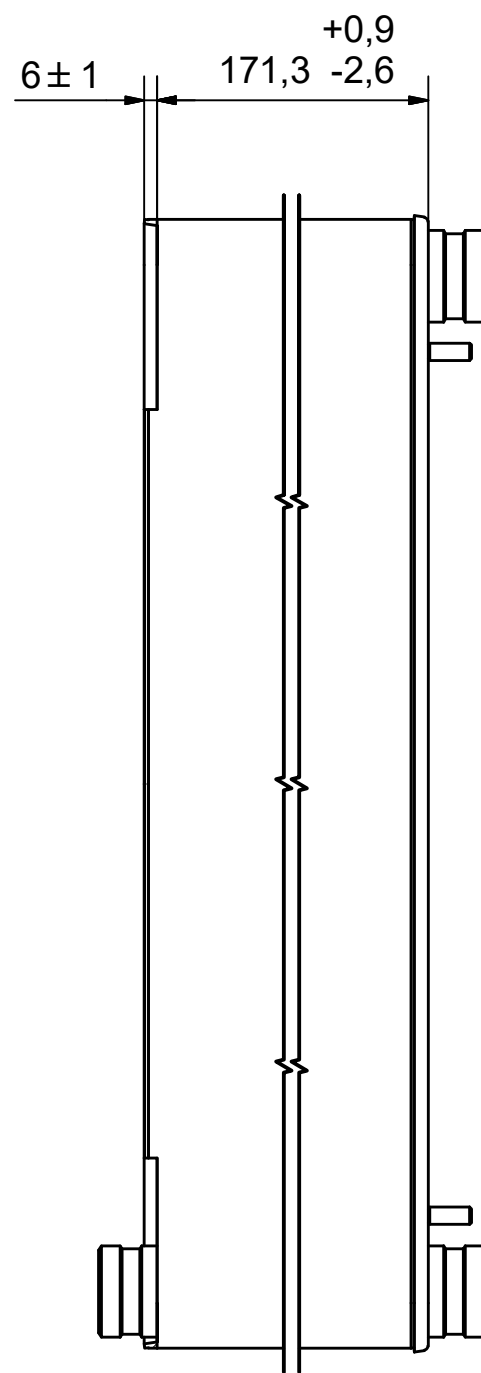
#	MM	IN
A	526	20.71
B	119	4.69
C	470	18.5
D	63	2.48
F	4.00+2.39*(NoP)	0.16+0.09*(NoP)
G	6	0.24
R	23	0.91
E_1	27	1.06

PED pression / température






NOTE 1



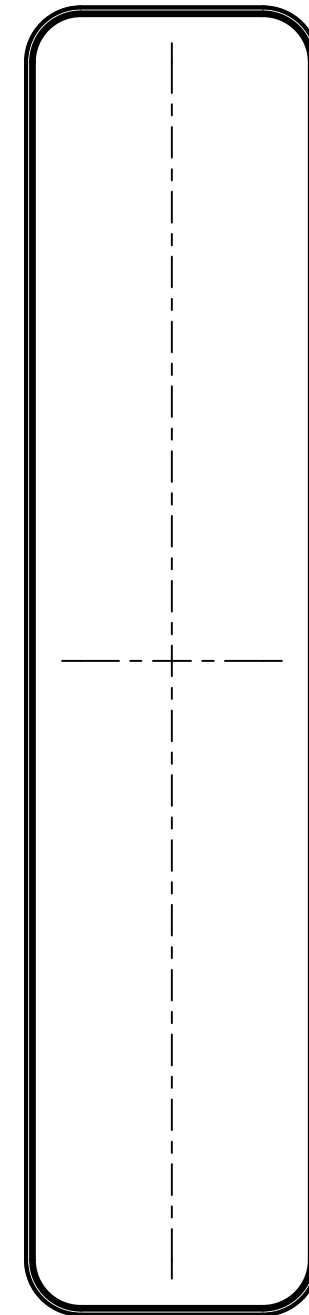
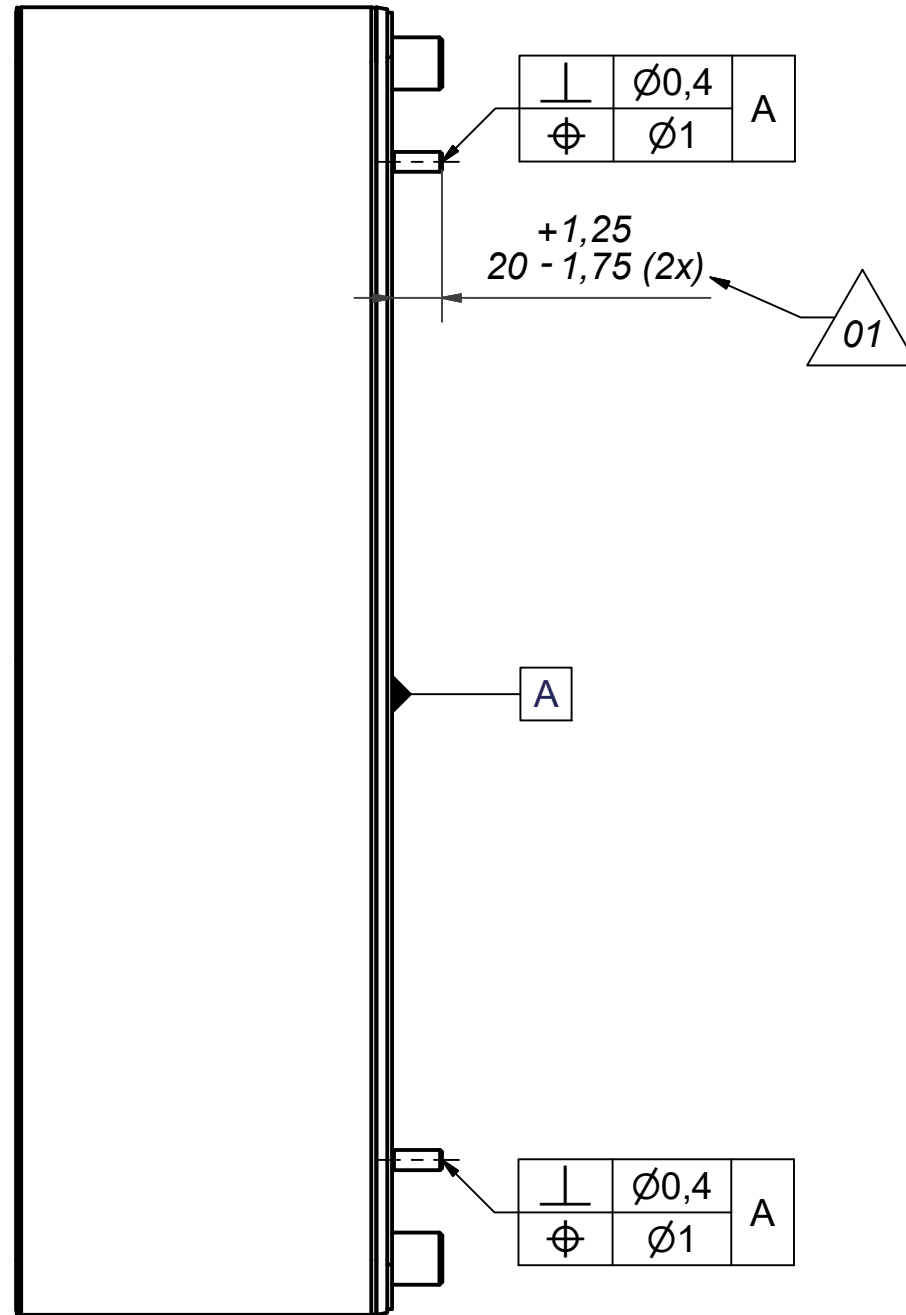
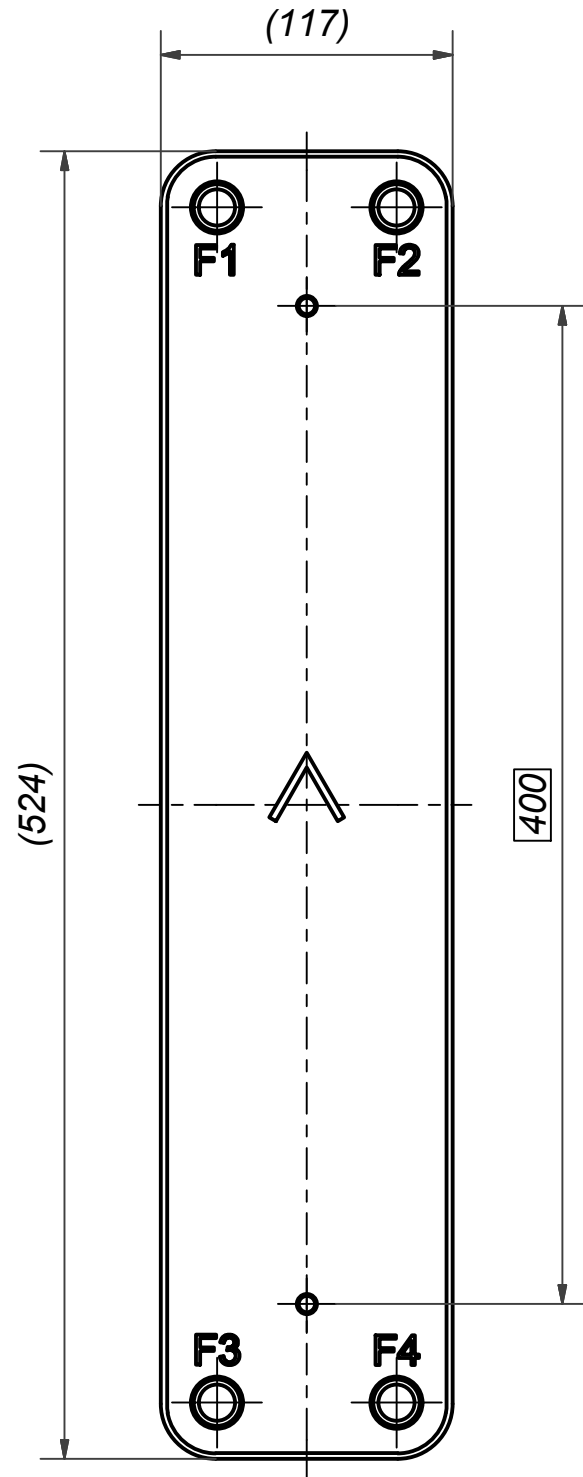
AXINTRA
ÉCHANGEURS THERMIQUES

NOTE 1 ALTERNATE MARKING: STICKER OR STAMP


F3	32447	WELD ø42,4, TH = 27,1	CD000698				
F2	32447	WELD ø42,4, TH = 27,1	CD000698				
F1	32447	WELD ø42,4, TH = 27,1	CD000698				
F	21075	B25/27/28/80 STUD B. F 2xCV400	CG250042	P4	32447	WELD ø42,4, TH = 27,1	CD000698
Pos	Article No	Title / Denomination, code, material, dimension etc	Drawing No./ref	Pos	Article No	Title / Denomination, code, material, dimension etc	Drawing No./ref

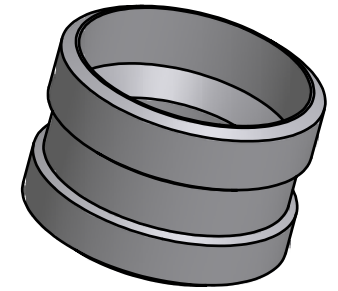
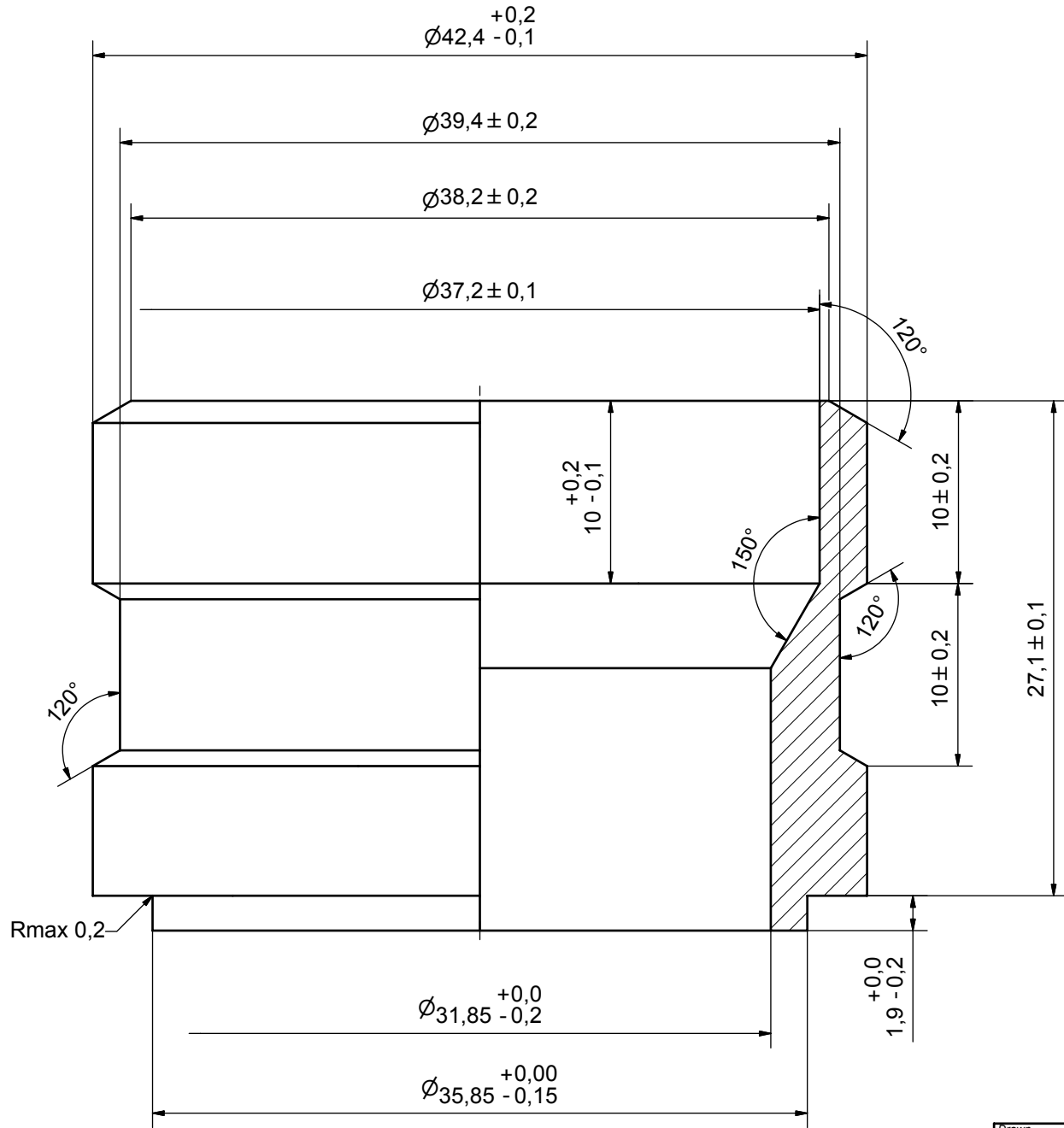
Title		B80SHx70/1P-SPS-M 3xW42.4 / W42.4	
 A DOVER COMPANY		Created Date	2023-12-18
		Created By	AU
Article/Configuration number		Drawing number	
0249310.0		AU00772867_0249310.0	

Rev No	Alteration	Date	Checked	Approved
01	Updated drawing title; Updated dimension	2017-02-13	skpt	PDM



© Company Confidential, Property of SWEP International AB

1	2	STUD BOLT M8x20 ART.NO 45162				M8x20
IT	QTY	TITLE				Drawing No.
<i>Drawn</i>	<i>Checked</i>	<i>Approved</i>	<i>Created Date</i>	<i>General geometrical tolerancing ISO 2768:</i>	<i>General surface finish R_a:</i>	<i>Scale</i>
laano	PDM	PDM	2005-02-16			-
 A DOVER COMPANY			<i>Title</i> B25T/28/80 STUD BOLT LOC. F 2xCV400			
			<i>Article number</i>	<i>Design Type</i>	<i>Drawing number</i>	<i>Revision</i>
			21075	CG	CG250042	01
						1 (1)



Drawn THE	Checked PDM	Approved PDM	Created Date 2005/05/12	General geometrical tolerancing ISO 2768 m	General surface finish R_a 3.2		Scale 4:1
		Title WELD $\varnothing 42,4$					
		Article number -	Drawing number CD000698	Revision -	Sheet 1 (1)		
A DOVER COMPANY							