

BDW16DW

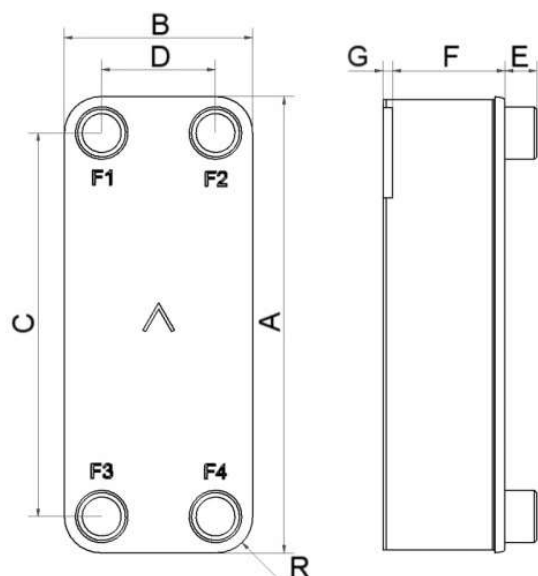
Ce produit à double paroi est conçu pour les applications exigeant une efficacité thermique élevée et une détection de fuite avancée. Sa conception offre les mêmes avantages que les autres BPHE de SWEP en termes de performance et de compacité.



Spécifications de base

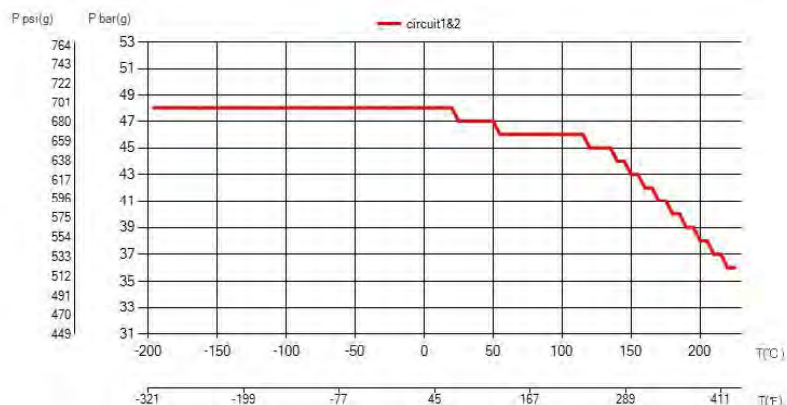
Nombre de plaques max. (NoP)	140
Débit volumétrique max.	11,3 m ³ /h (13.21 gpm)
Volume du canal	0.061/0.061 dm ³ (0.0022/0.0022 ft ³)
Matières	Plaques en acier inoxydable 316, brasage cuivre
Poids sans les connexions	1.55+(0.22*NoP) kg 3.42+(0.485*NoP) lb

Les dimensions standard



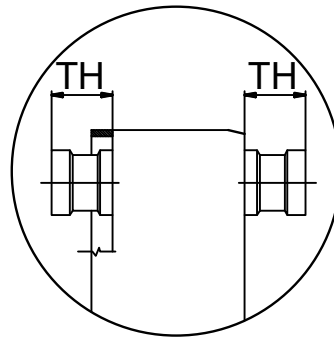
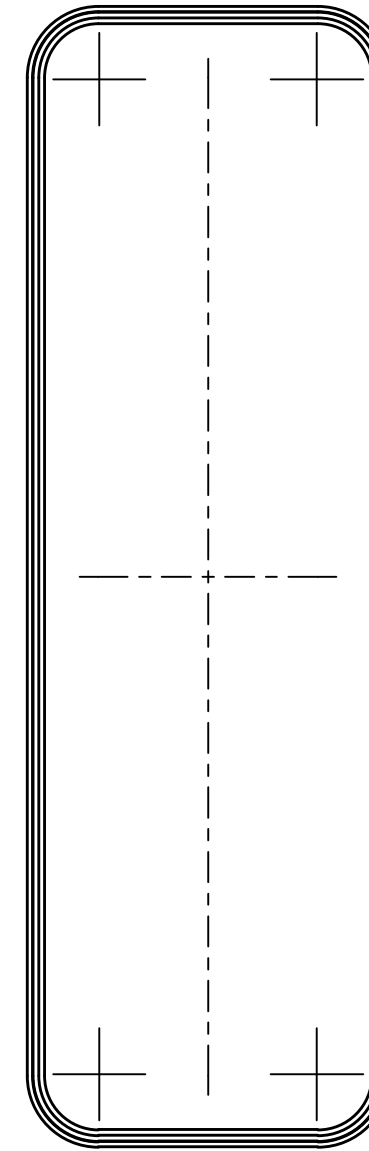
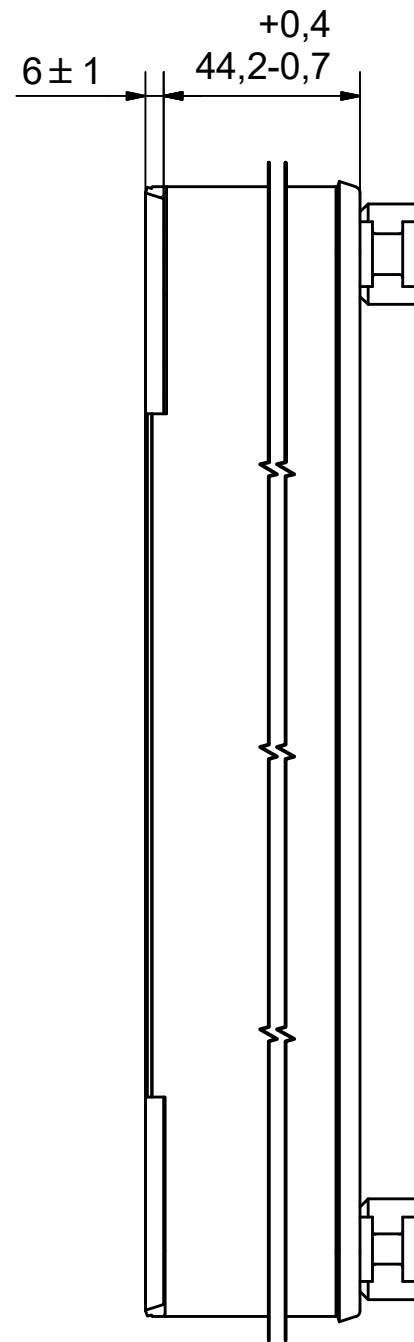
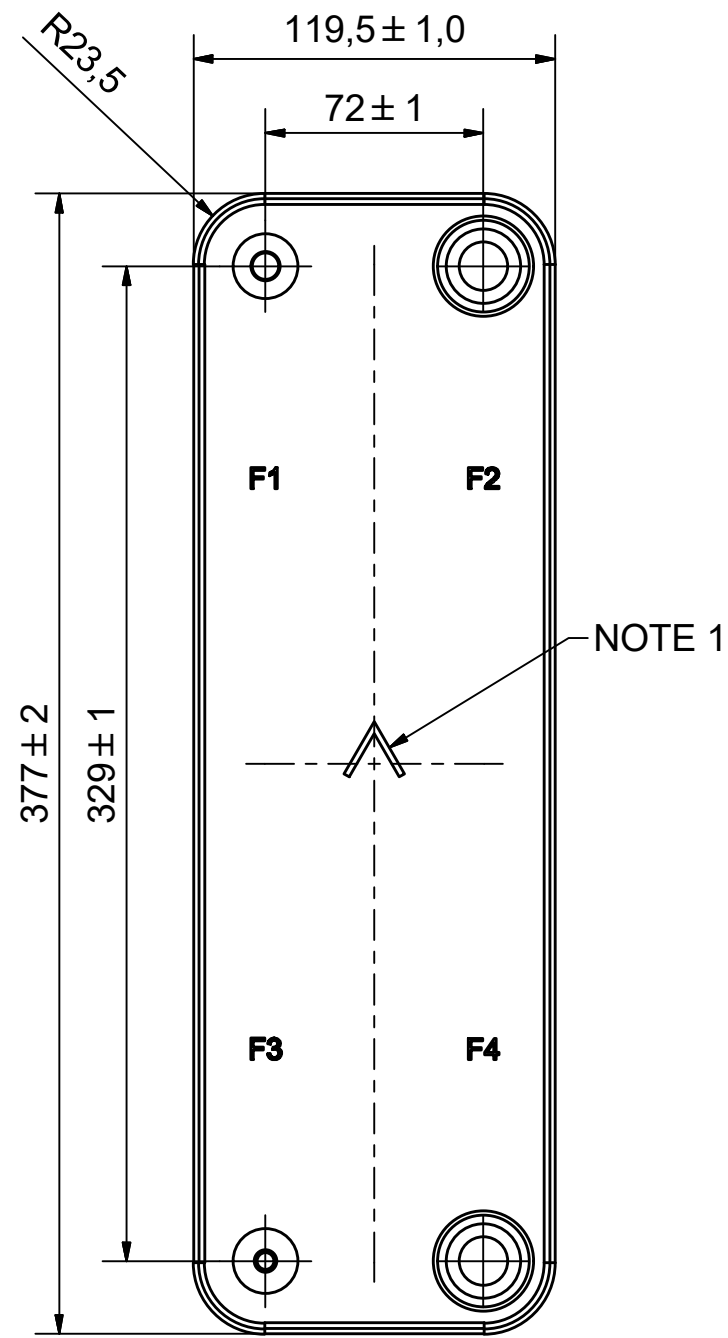
#	MM	IN
A	377	14.84
B	119.50	4.7
C	329	12.95
D	72	2.83
F	4.00+2.01*(NoP)	0.16+0.08*(NoP)
G	6	0.24
R	23.50	0.93
E_1	20	0.79

PED pression / température



AXINTRA


ÉCHANGEURS THERMIQUES



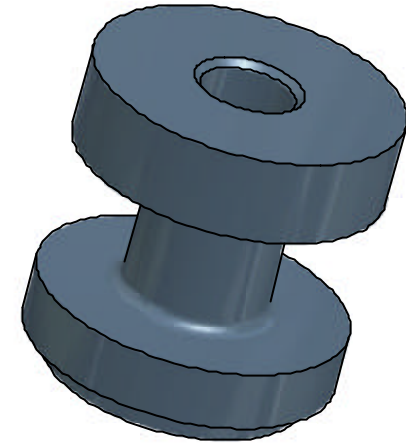
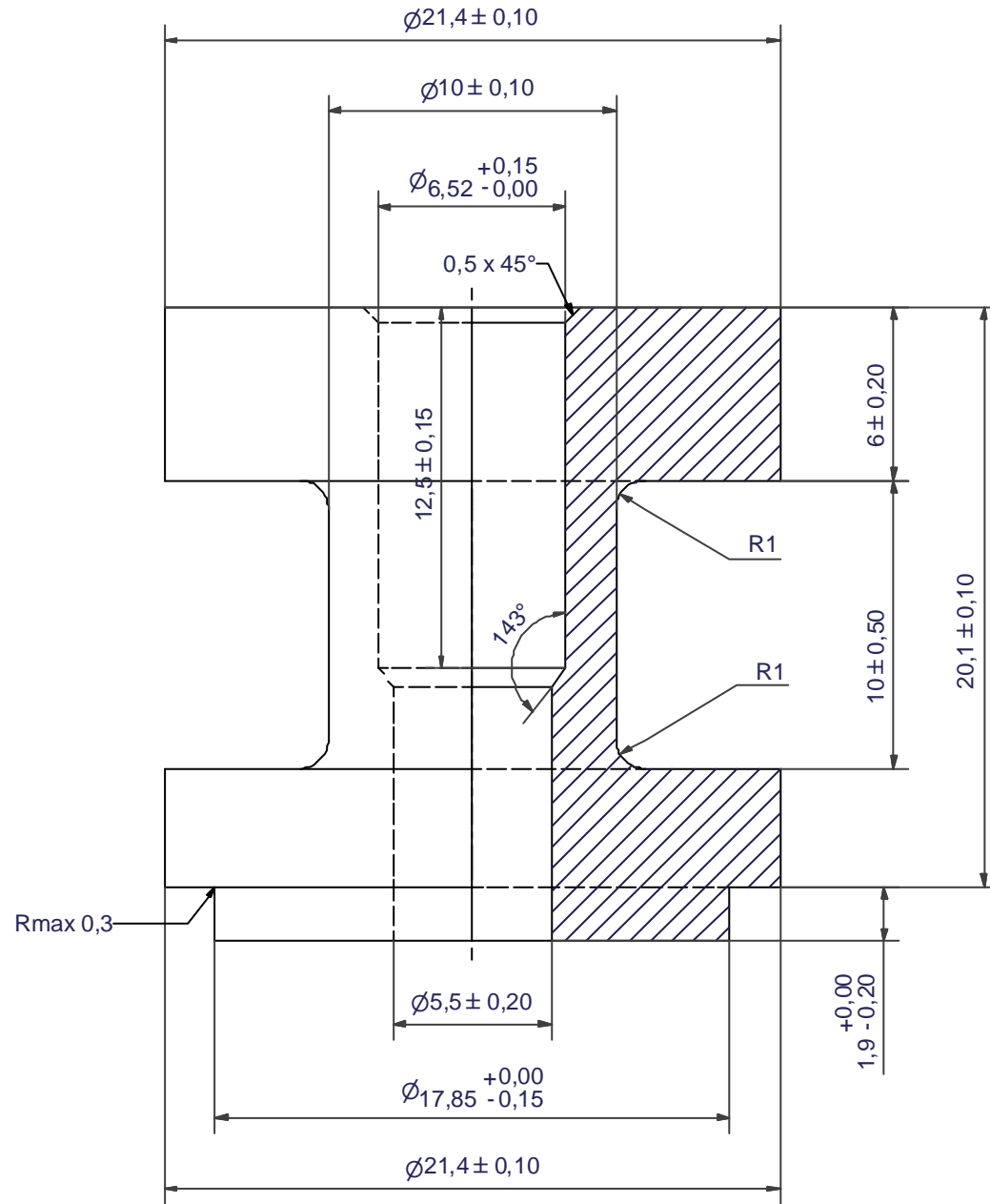
NOTE 1: ALTERNATE MARKING STICKER OR STAMP

F4	32471	ISO-G 1" A, TH = 20,1	CD000728
F3	45218	SOLDER $\phi 6,5$, TH = 20,1	CD000107
F2	32471	ISO-G 1" A, TH = 20,1	CD000728
F1	45344	SOLDER $\phi 9,65$, TH = 20,1	CD000119


Pos	Article No	Title / Denomination, code, material, dimension etc	Drawing No./ref	Pos	Article No	Title / Denomination, code, material, dimension etc	Drawing No./ref
-----	------------	---	-----------------	-----	------------	---	-----------------

Title B16DWHx20/1P-SC-M 6.5+9.65+2x1"			
 A DOVER COMPANY		Created Date 2024-01-03	Created By AU
		Article/Configuration number 0270603.0	Drawing number AU00773805_0270603.0

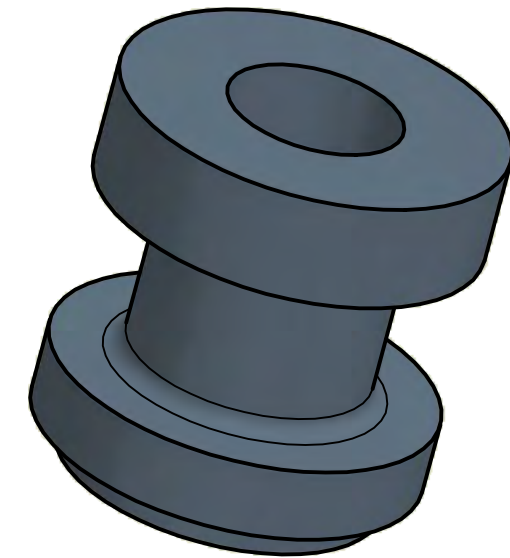
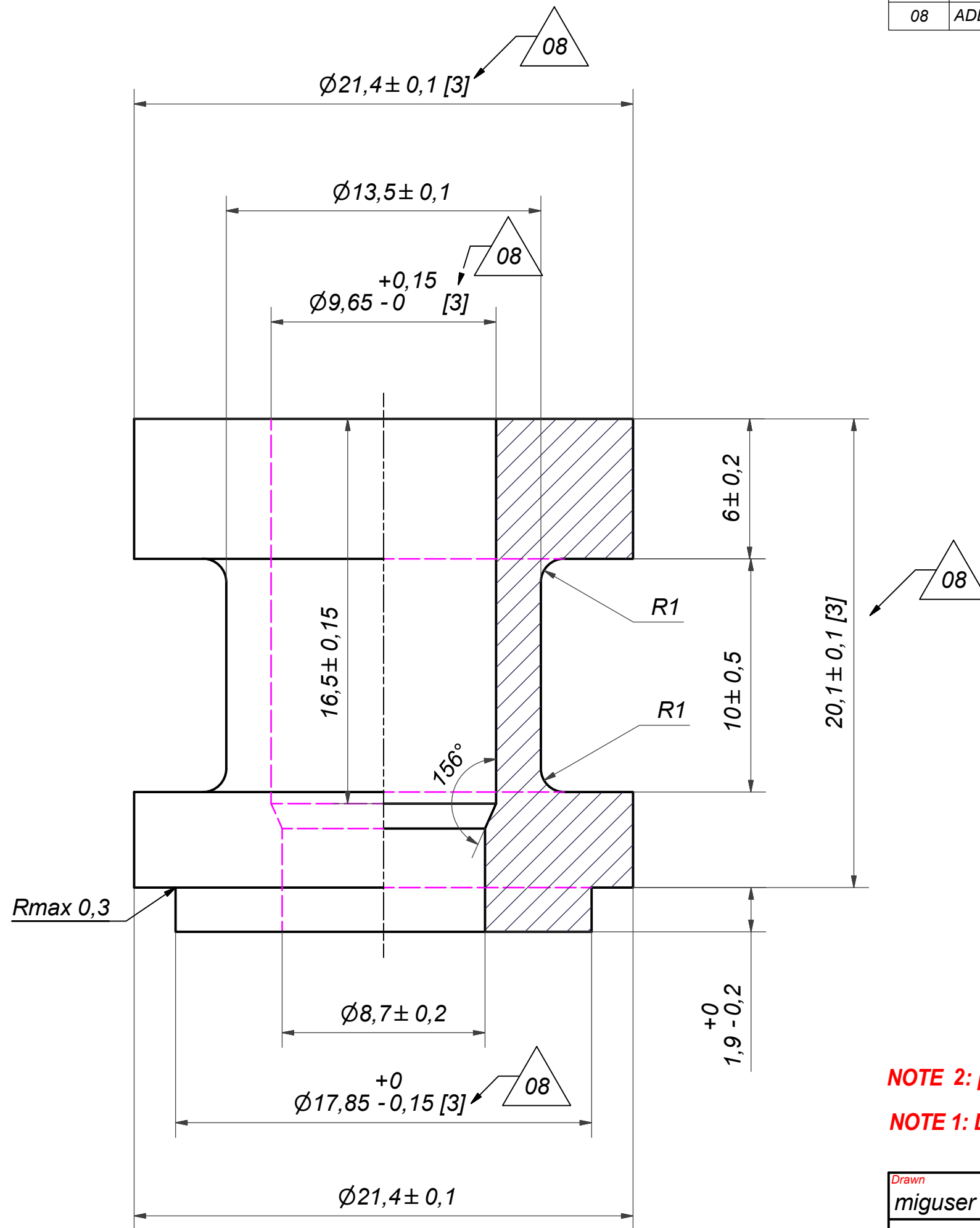
Rev No.	Alteration	Date	Checked	Approved
8	REDRAWN IN INVENTOR	2004/07/14	TN	PDM



© Company Confidential, Property of SWEP International AB

Drawn	Checked	Approved	Created Date	General geometrical tolerancing ISO 2768	General surface finish R_a	Scale
HR	EG	VP	1990/11/13	m	3.2	6:1
			SOLDER $\varnothing 6,5$			
Article number		Drawing number		Revision	Sheet	
-		CD000107		8	1 (1)	

Rev No	Alteration	Date	Checked	Approved
08	ADDED CRITICAL CHARACTERISTIC, UPDATED DRAWING	2017-09-29	SKDS	VP



NOTE 2: [3] - CRITICAL/SPECIAL CHARACTERISTIC TO BE FOLLOWED

NOTE 1: DEBURR SHARP EDGES; MAX 0.4

ACCORDING TO MQS
MATERIAL

Drawn	Checked	Approved	Created Date	General geometrical tolerancing ISO 2768:	General surface finish R_a :	Scale	Paper size
miguser	EG	VP	1991-05-24	m	3.2	-	A3
			Title				
			SOLDER Ø9,65				
Article number			Design Type	Drawing number	Revision	Sheet	
CD			CD000119	08	1 (1)		

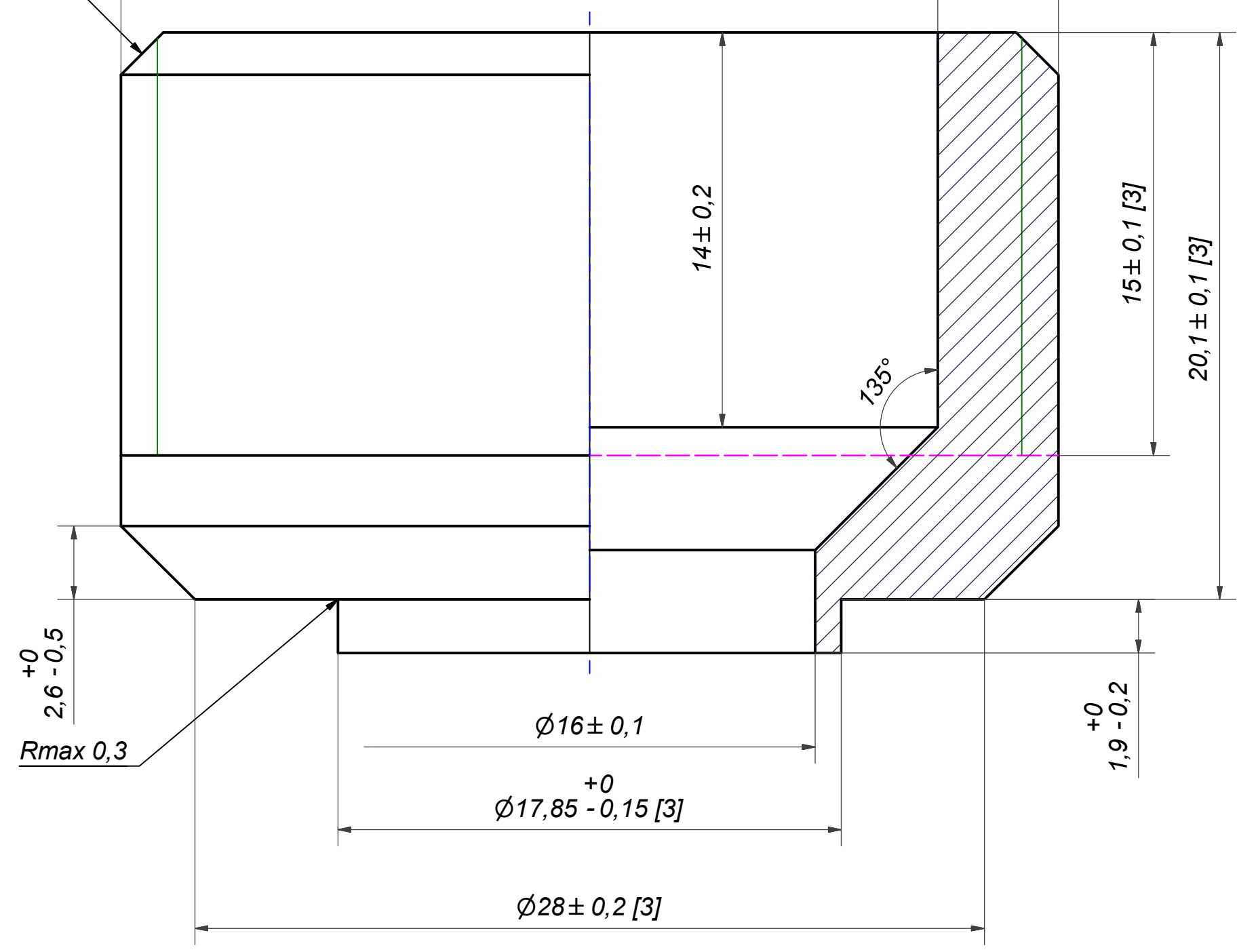
Rev No	Alteration	Date	Checked	Approved
02	ECN-000223: update of thread designation	2021-10-12	PDM	PDM

02

ISO-G 1" A [3]

$\phi 24,7^{+0,2}_{-0}$

1,5x45



NOTE 2: [3] - CRITICAL/SPECIAL CHARACTERISTIC TO BE FOLLOWED
NOTE 1: DEBURR SHARP EDGES; MAX 0.4

ACCORDING TO MQS
MATERIAL

Drawn	Checked	Approved	Created Date	General geometrical tolerancing ISO 2768:	General surface finish R_a :	Scale	Paper size
skze	PDM	PDM	2005-07-14	mK	3.2	-	A3
			ISO-G 1" A				
Article number		Design Type	Drawing number	Revision	Sheet		
		CD	CD000728	02	1 (1)		