

B220

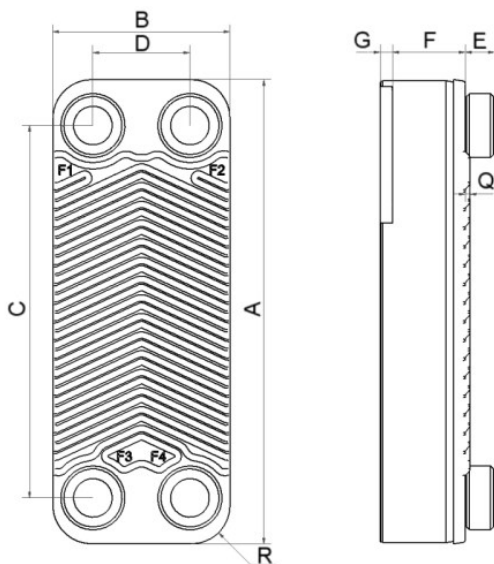
Le modèle B220 est un échangeur de chaleur à plaques brasées compact mais très efficace, offrant une excellente efficacité de transfert thermique à faible coût. L'une de ses principales applications est le chauffage haute efficacité de l'eau chaude sanitaire (ECS), mais on peut aussi l'utiliser dans d'autres applications à une phase telles que le refroidissement de l'huile, le chauffage domestique et les désurchauffeurs. Grâce à sa construction à deux types de plaques, on peut varier la longueur thermique pour obtenir un produit personnalisé aux performances optimales pour chaque application.



Spécifications de base

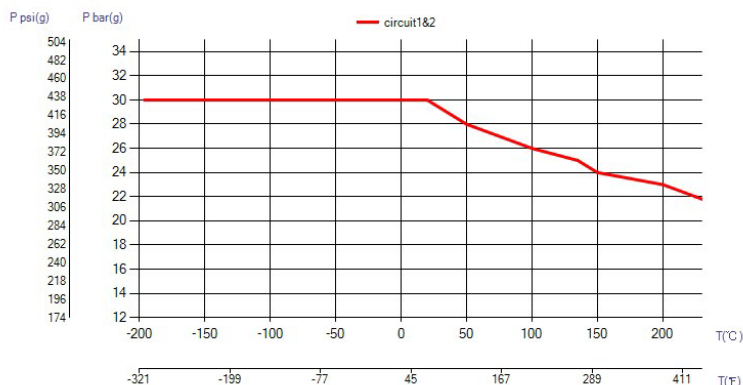
Nombre de plaques max. (NoP)	300
Débit volumétrique max.	39 m³/h (171.71 gpm)
Volume du canal	0.14/0.14 dm³ (0.0049/0.0049 ft³)
Matières	Plaques en acier inoxydable 316/316L, brasage cuivre
Poids sans les connexions	5.30+(0.321*NoP) kg 11.68+(0.708*NoP) lb

Les dimensions standard



#	MM	IN
A	524	20.63
B	202	7.95
C	442	17.4
D	120	4.72
F	6,00+1,73*(NoP)	23.62+6.81*(NoP)
G	4	0.16
R	41.60	1.64
E_1	54	2.13

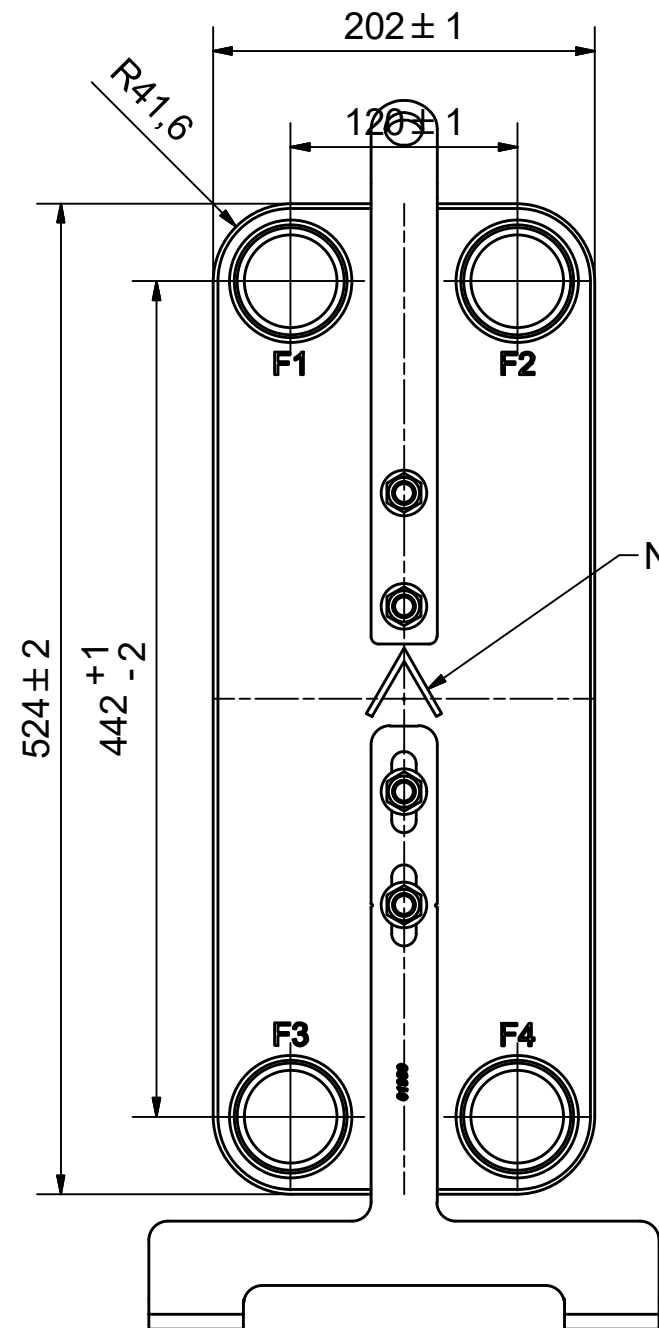
PED pression / température



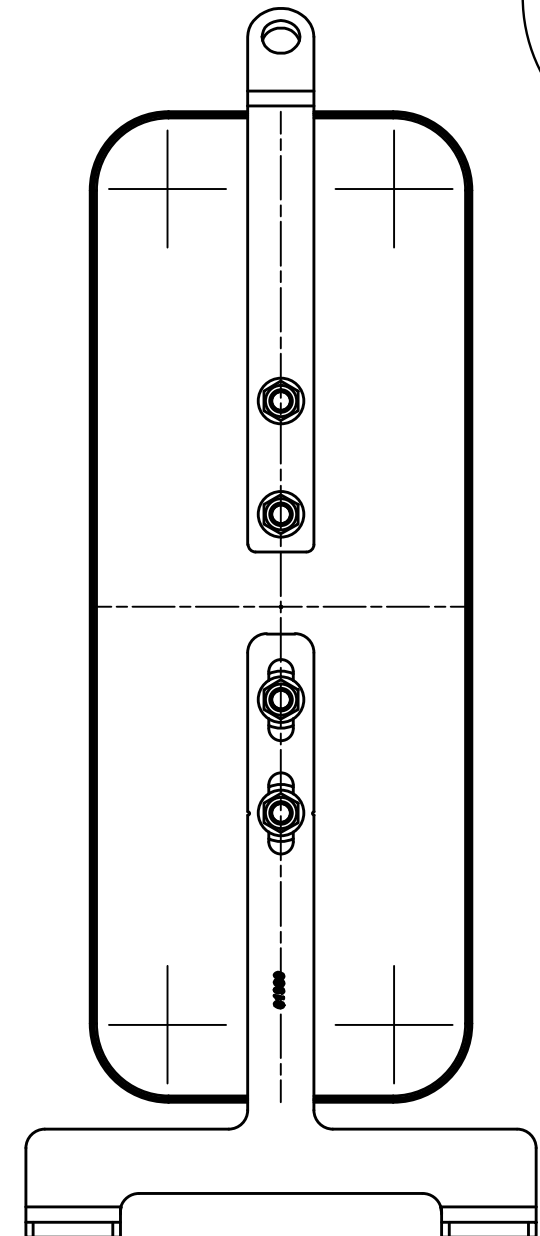
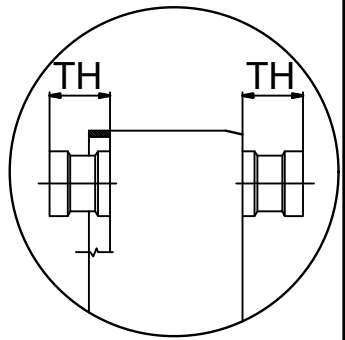
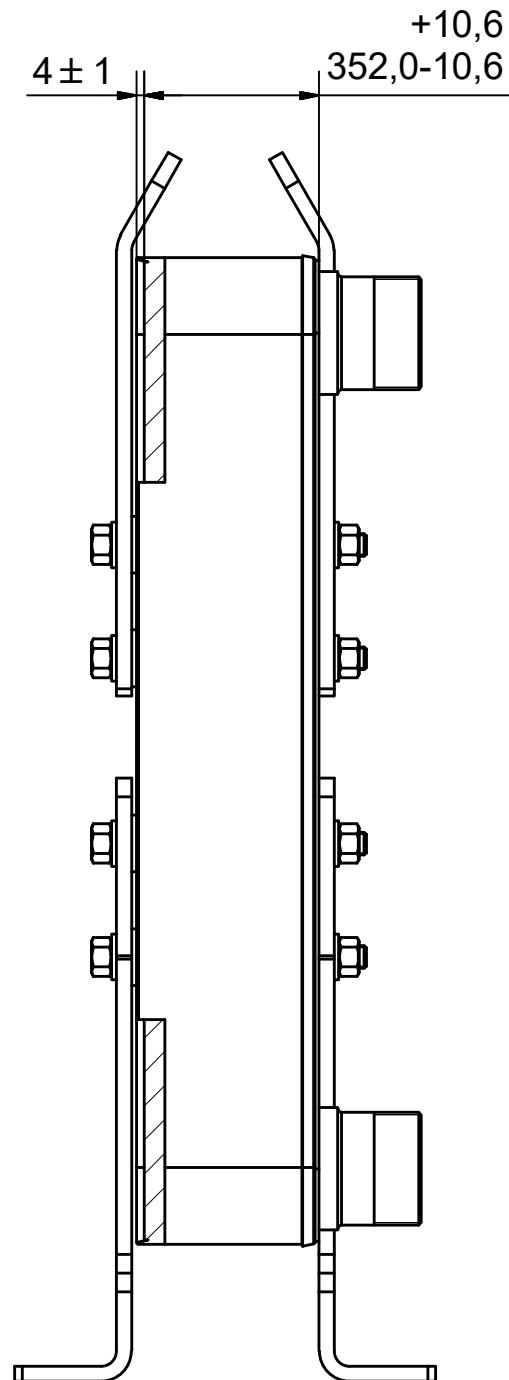
© Company Confidential, Property of SWEP International AB

AXINTRA

ÉCHANGEURS THERMIQUES



NOTE 1

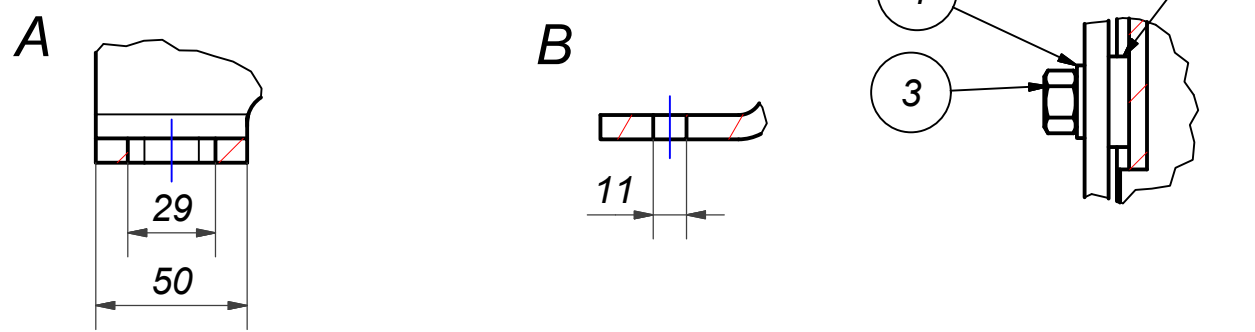
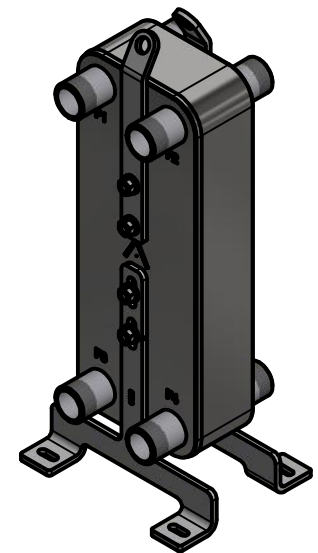
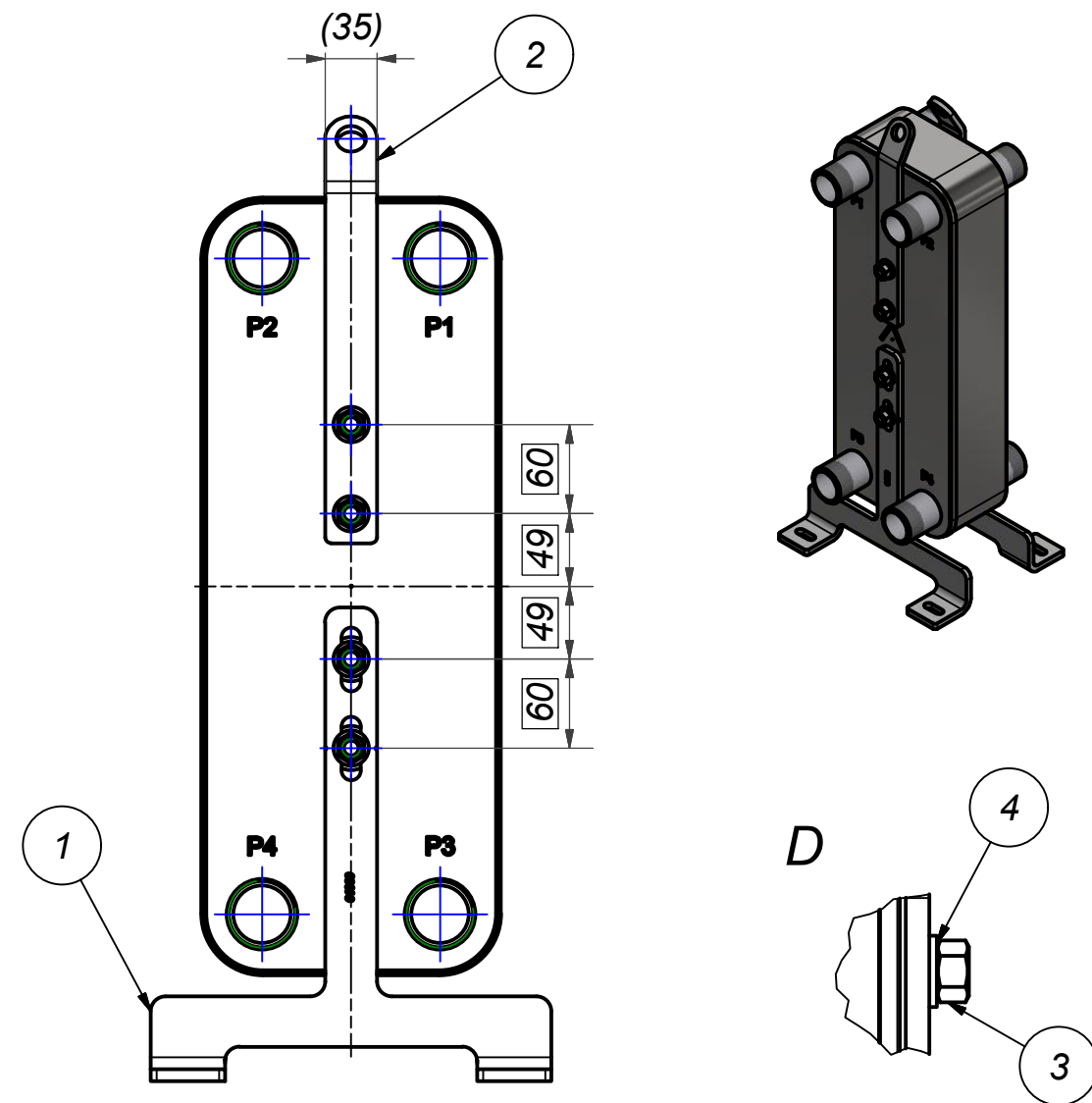
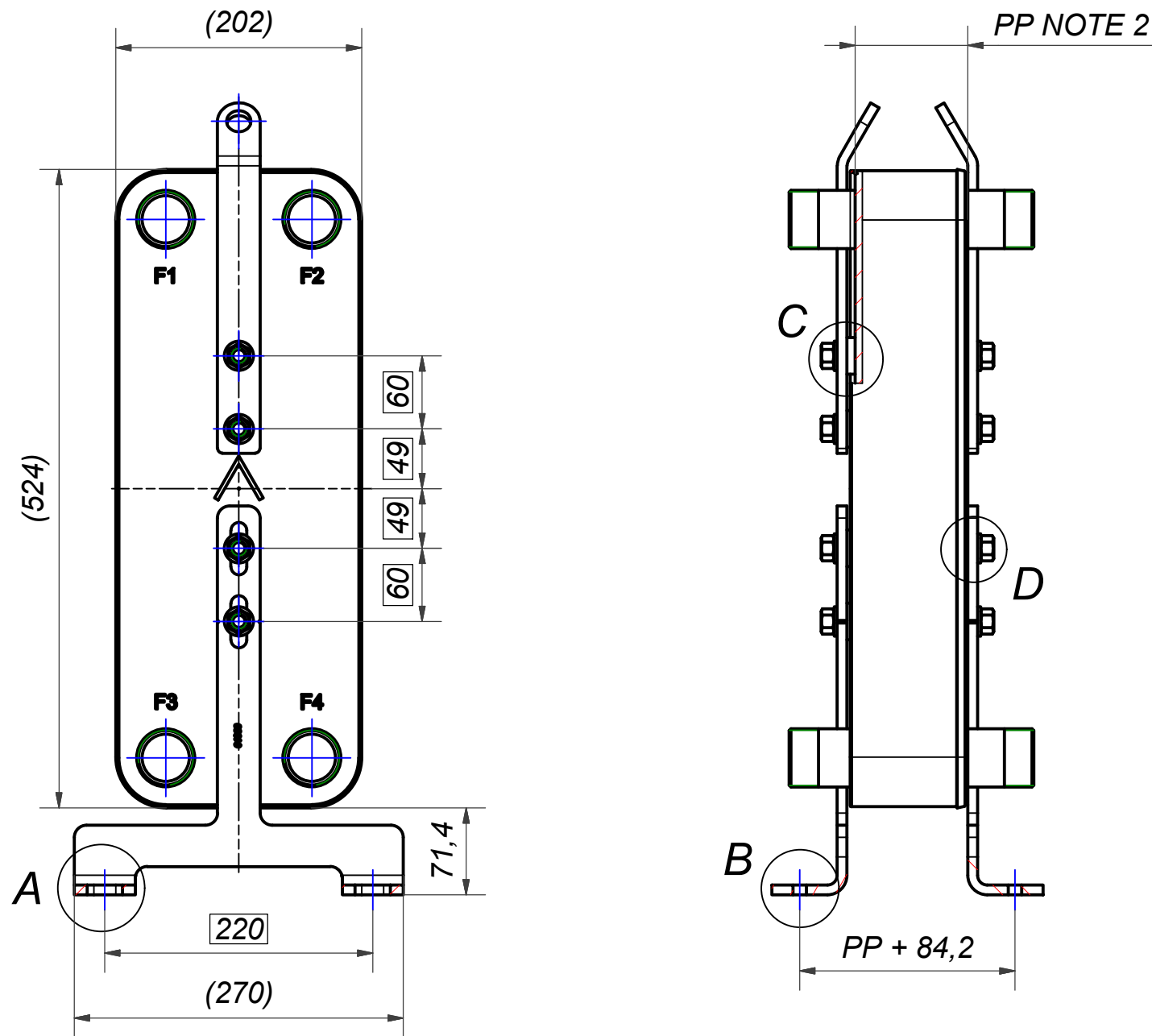


NOTE 1 ALTERNATE MARKING: STICKER OR STAMP

F4	46101	ISO-G 2 A, TH = 54.2	CD000322				
F3	46101	ISO-G 2 A, TH = 54.2	CD000322				
F2	46101	ISO-G 2 A, TH = 54.2	CD000322				
F1	46101	ISO-G 2 A, TH = 54.2	CD000322				
F	24039	220 SUPPORT LEG	00047218_1				
F	24037	220 STUD BOLT LOC F 4x60x49x49x60	00047189_1	P	24038	220 STUD BOLT LOC P 4x60x49x49x60	00047191_1
Pos	Article No	Title / Denomination, code, material, dimension etc	Drawing No./ref	Pos	Article No	Title / Denomination, code, material, dimension etc	Drawing No./ref

Title			
B220Hx200/1P-SC-S 4x2"			
SWEP A DOVER COMPANY		Created Date 5/18/2022	Created By AU
		Article/Configuration number 0273344.1	Drawing number AU00697377_0273344.1

Rev No	Alteration	Date	Checked	Approved
01	Updated Note 1	2019-06-10	SKDS	PDM



**NOTE 1: REQUIRES BOTH STUD BOLT OPTIONS:
24037 (F-SIDE) AND 24038 (P-SIDE)**

NOTE 2:

Pressure S
 $PP=6+1.73*(NP)$
 NP=Number of plates
 Tolerance: +3% / -3%

Pressure M
 $PP=10+1.73*(NP)$
 Tolerance: +3% / -3%

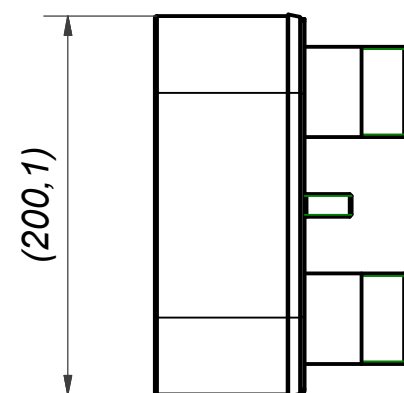
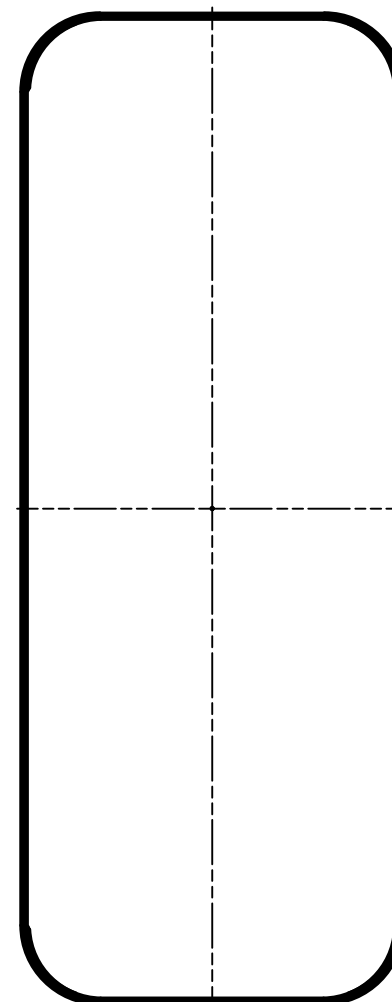
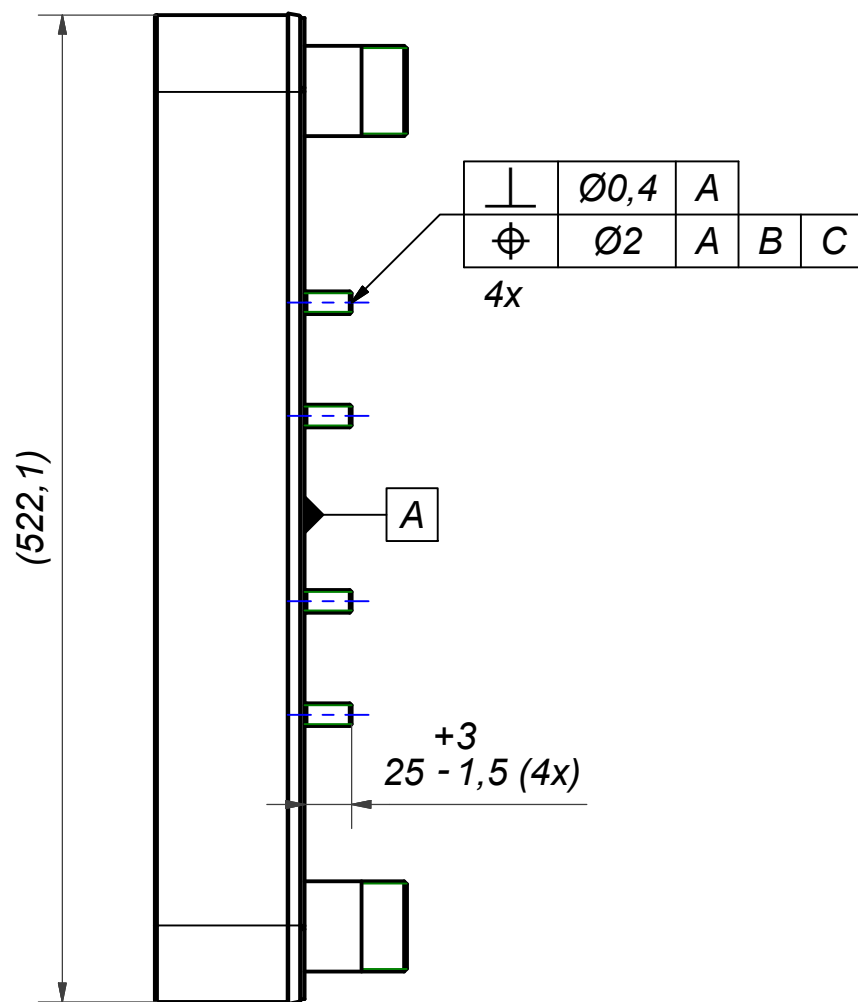
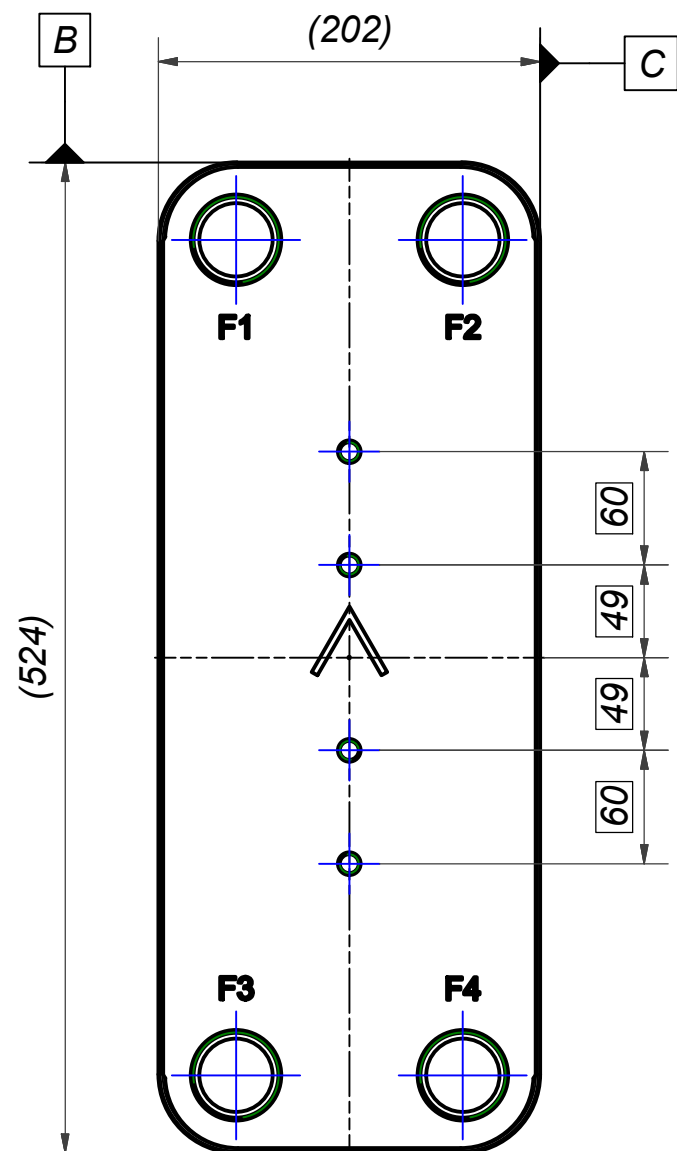
Pressure H
 $PP=14+1.73*(NP)$
 Tolerance: +3% / -3%

© Company Confidential, Property of SWEP International AB


Item	QTY	Description	Article No.	Drawing / Article
5	4	CBE B65 LIFTING-EYE WASHER	45562	CC000059
4	8	WASHER R-RB A2 DIN 125	45524	13x24x2.5
3	8	R-LOCKNUT M12 A2 DIN 985	45523	M12
2	2	B427 HANGER (SPEC)	61987	00033979
1	2	B427 SUPPORT LEG (SPEC)	61989	00033817

Drawn	Checked	Approved	Created Date	General geometrical tolerancing ISO 2768:	General surface finish R_a :	Scale	Paper size
skds	PDM	PDM	2018-12-18	-	-	-	A3
			Title 220 COMPLETE OPTION SET				
			Article number 24039	Design Type CG	Drawing number 00047218	Revision 01	Sheet 1 (1)

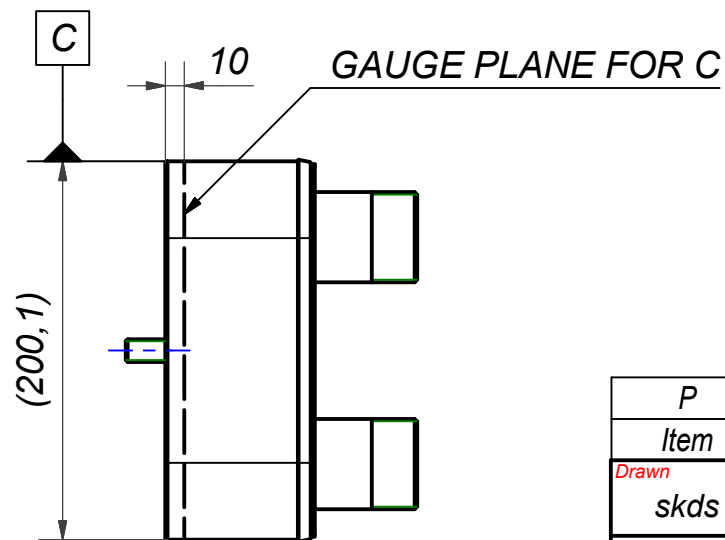
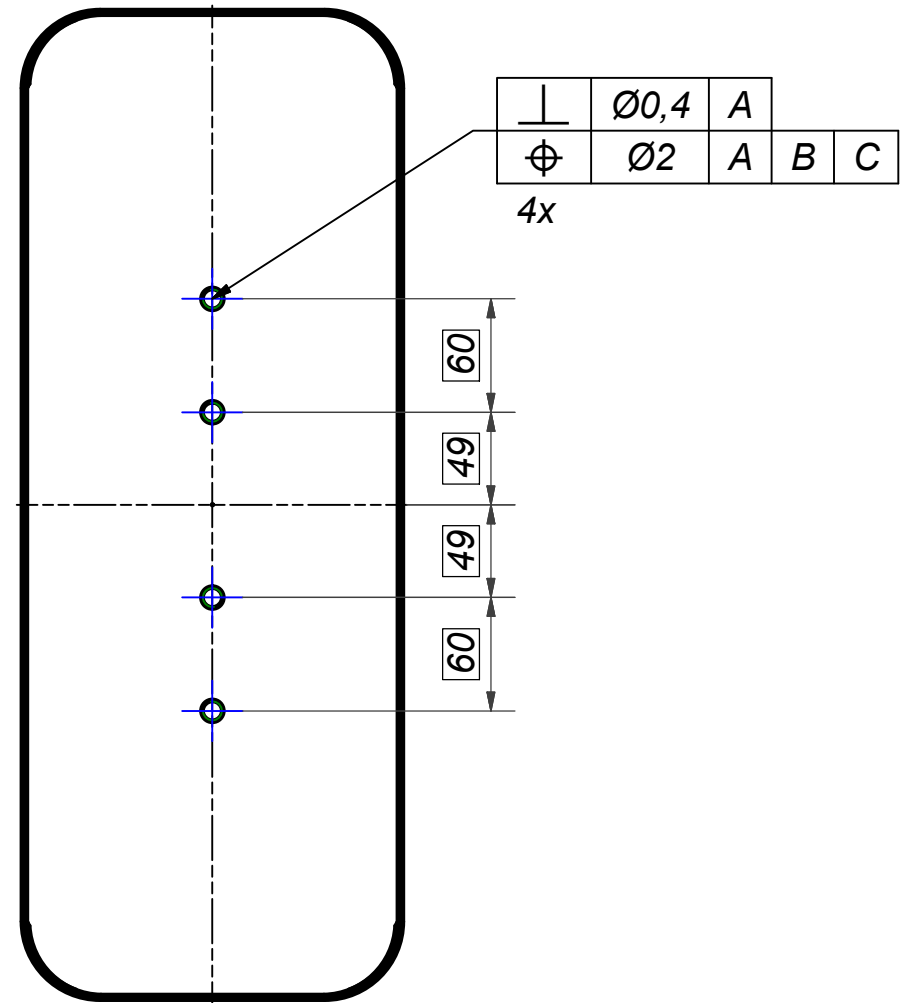
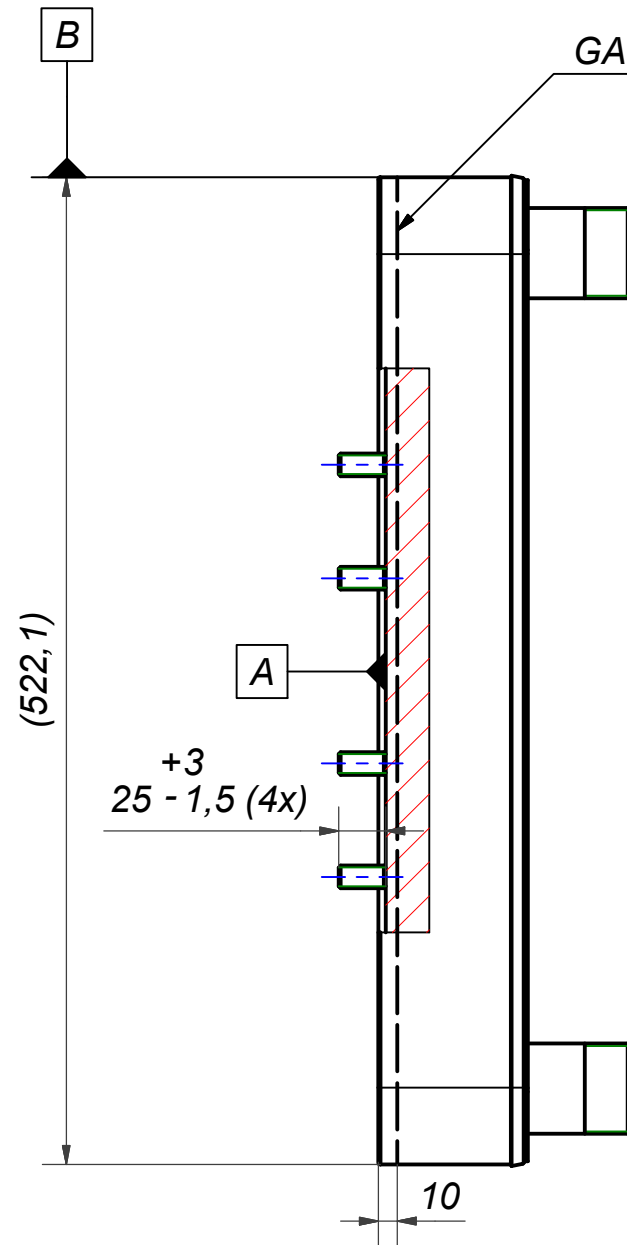
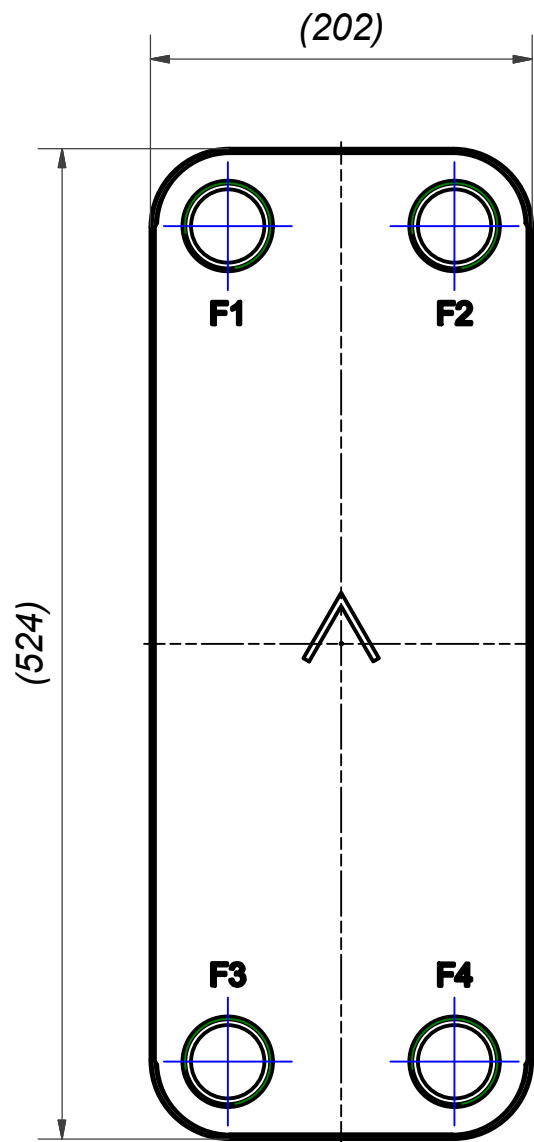
Rev No	Alteration	Date	Checked	Approved
01	Updated model for drawing generatro	2019-04-30	SKDS	PDM



© Company Confidential, Property of SWEP International AB

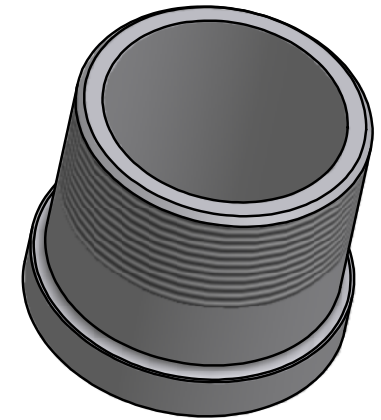
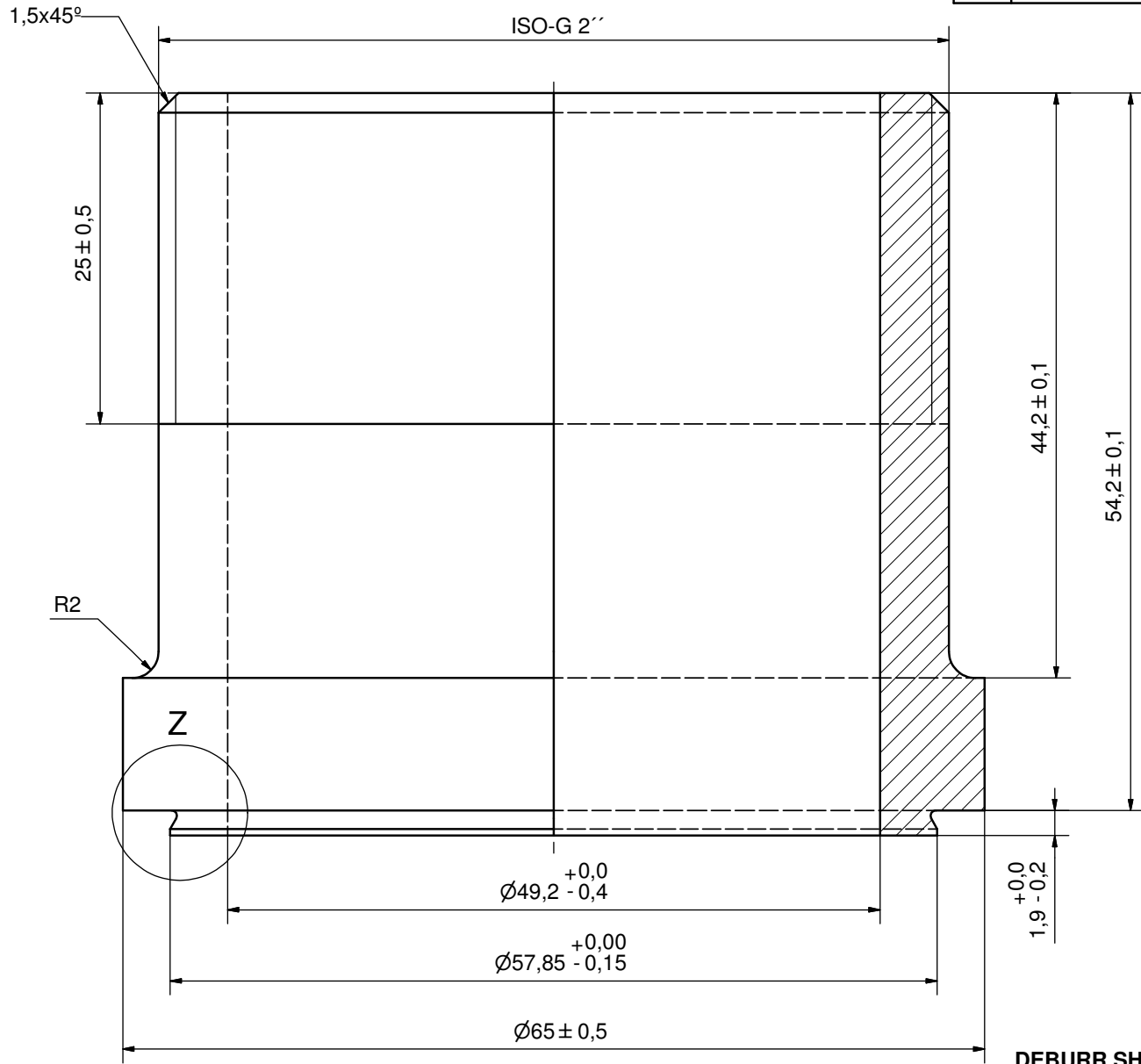
F	4	STUD BOLT M12 x 25, ART. NO. 45987			M12x25		
Item	QTY	Description			Drawing / Article		
Drawn	Checked	Approved	Created Date	General geometrical tolerancing ISO 2768:	General surface finish R_a :	Scale	Paper size
skds	PDM	PDM	2018-12-13			-	A3
				Title			
				220 STUD BOLT LOC F 4x60x49x49x60			
Article number		Design Type	Drawing number	Revision	Sheet		
24037		CG	00047189	01	1 (1)		

Rev No	Alteration	Date	Checked	Approved
02	Changed height of bolts from M12x30 to M12x25	2020-07-28	skds	PDM

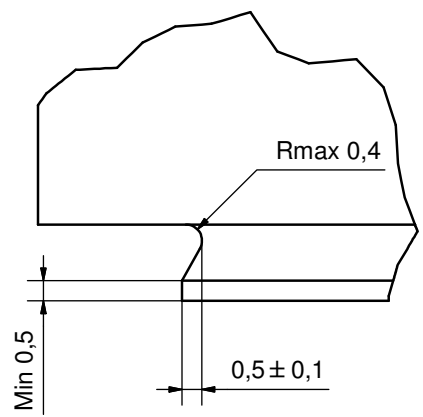


P	4	STUD BOLT M12 x 25, ART. NO. 45987			M12x25		
Item	QTY	Description			Drawing / Article		
Drawn	Checked	Approved	Created Date	General geometrical tolerancing ISO 2768:	General surface finish R_a :	Scale	Paper size
skds	PDM	PDM	2018-12-13			-	A3
				Title			
				220 STUD BOLT LOC P 4x60x49x49x60			
Article number		Design Type	Drawing number	Revision	Sheet		
24038		CG	00047191	02	1 (1)		

Rev No.	Alteration	Date	Checked	Approved
4	ADDED DEBURR & MATERIAL INFO	2009/07/22	AP	PDM



Z (8 : 1)



DEBURR SHARP EDGES; MAX 0,4

ACCORDING TO MQS
MATERIAL

© Company Confidential, Property of SWEP International AB

AXINTRA
ÉCHANGEURS THERMIQUES

Drawn RJ	Checked EG	Approved BOS	Created Date 1997-02-17	General geometrical tolerancing ISO 2768 m	General surface finish R_a 3.2	Scale 3:1
			Title ISO-G 2" A			
Article number -		Drawing number CD000322		Revision 4	Sheet 1 (1)	