

B220

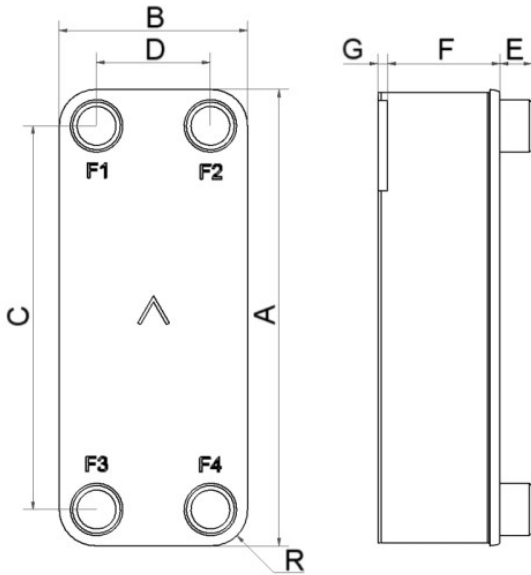
Le modèle B220 est un échangeur de chaleur à plaques brasées compact mais très efficace, offrant une excellente efficacité de transfert thermique à faible coût. L'une de ses principales applications est le chauffage haute efficacité de l'eau chaude sanitaire (ECS), mais on peut aussi l'utiliser dans d'autres applications à une phase telles que le refroidissement de l'huile, le chauffage domestique et les désurchauffeurs. Grâce à sa construction à deux types de plaques, on peut varier la longueur thermique pour obtenir un produit personnalisé aux performances optimales pour chaque application.



Spécifications de base

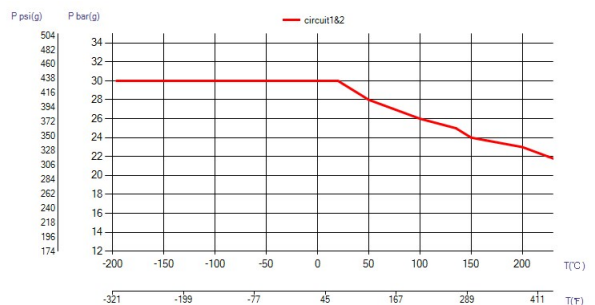
Nombre de plaques max. (NoP)	300
Débit volumétrique max.	39 m ³ /h (171.71 gpm)
Volume du canal	0.14/0.14 dm ³ (0.0049/0.0049 ft ³)
Matières	Plaques en acier inoxydable 316/316L, brasage cuivre
Poids sans les connexions	5.30+(0.321*NoP) kg 11.68+(0.708*NoP) lb
Taille la taille des Particules (mm)	0,7

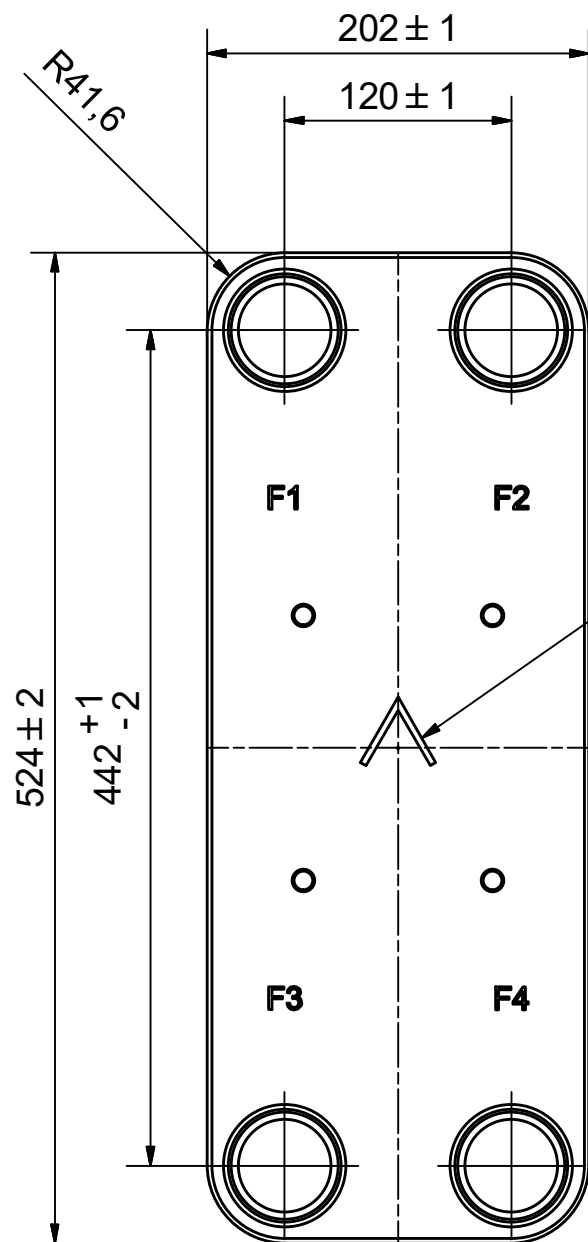
Les dimensions standard



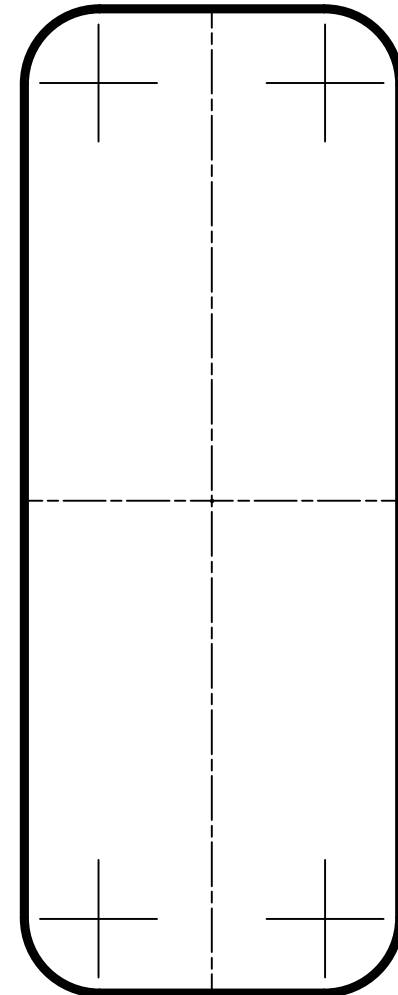
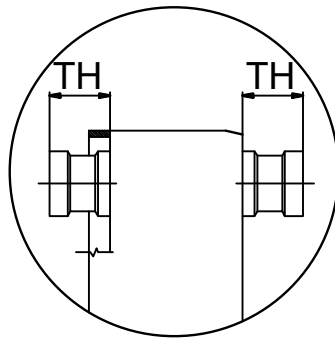
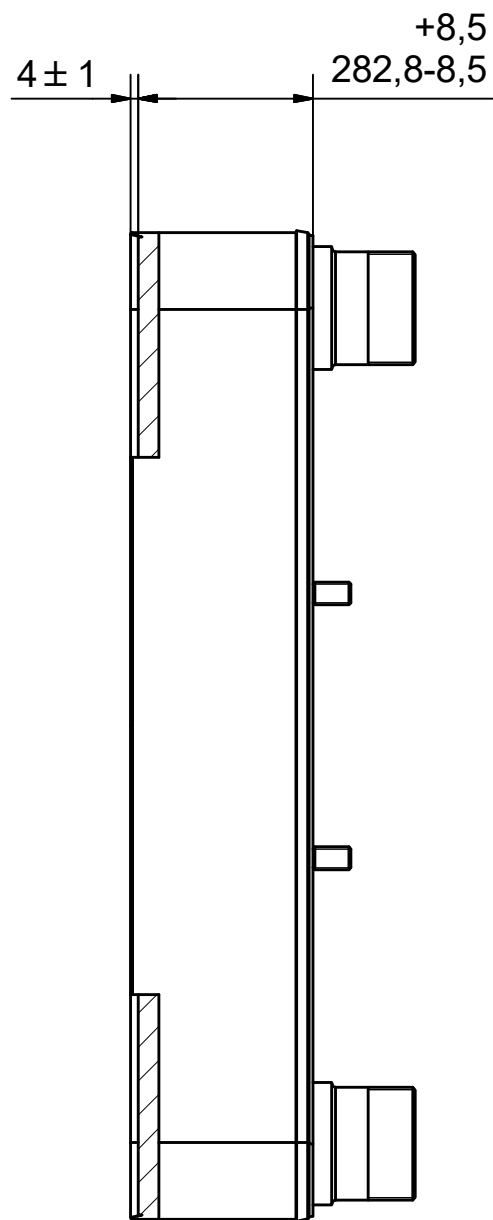
#	MM	IN
A	524	20.63
B	202	7.95
C	442	17.4
D	120	4.72
F	6,00+1,73*(NoP)	0.24+0.07*(NoP)
G	4	0.16
R	41.60	1.64
E_1	54	2.13
E_2	27	1.06
E_3	30	1.18

PED pression / température





NOTE 1



AXINTRA
ÉCHANGEURS THERMIQUES

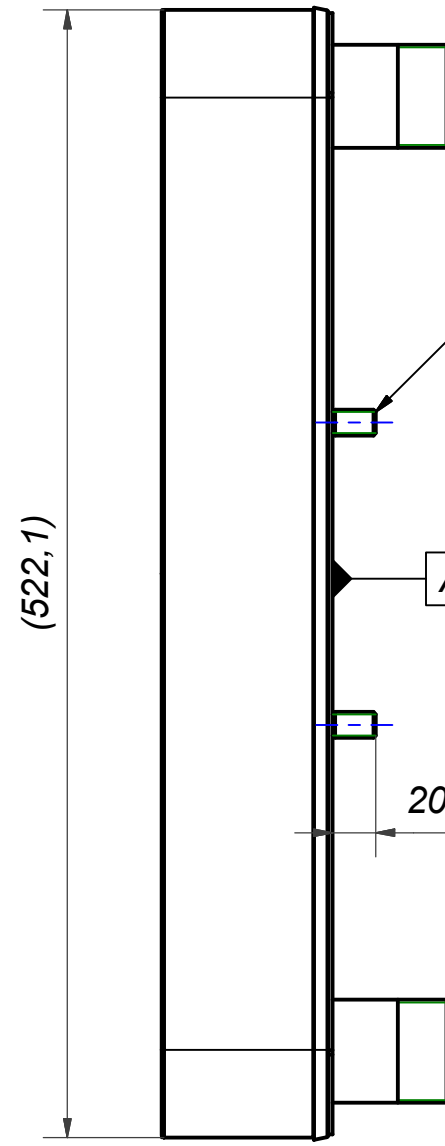
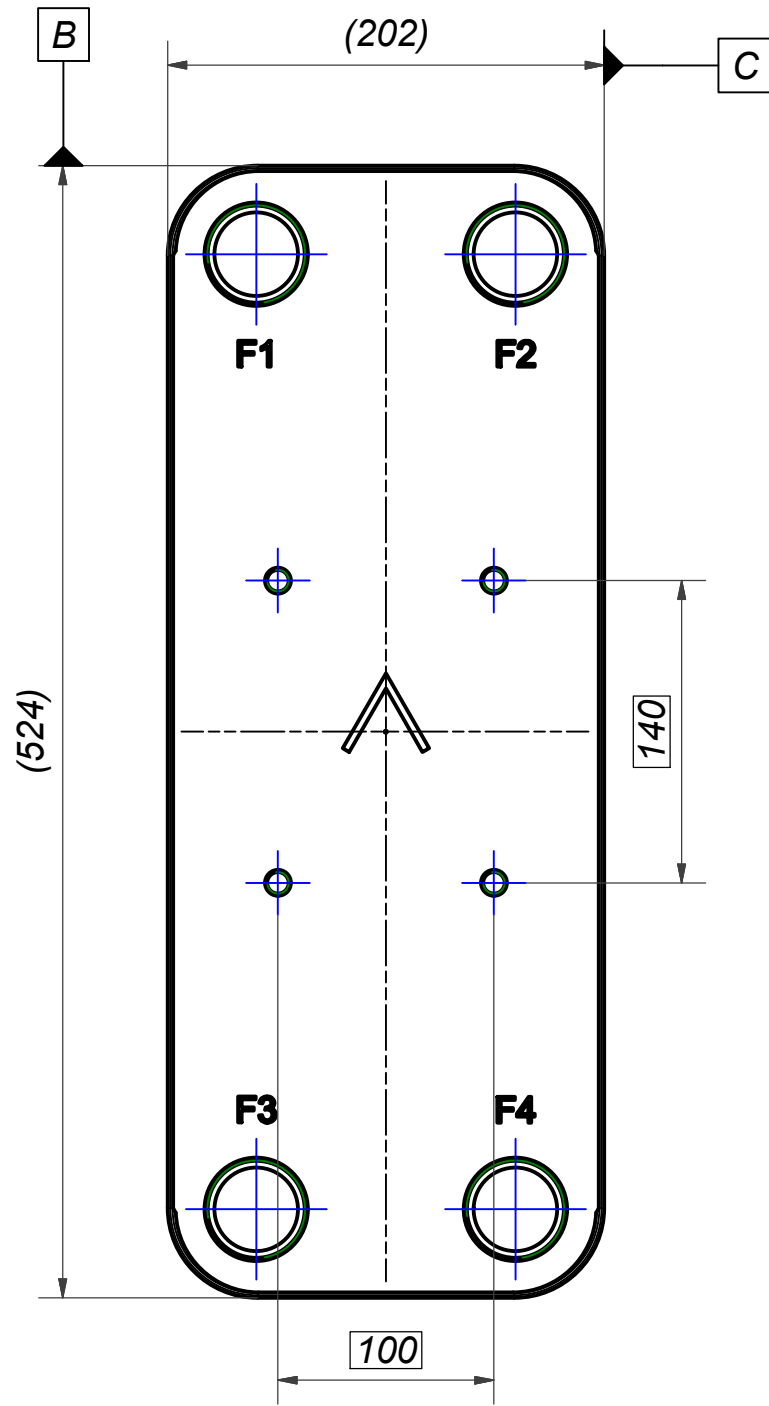
NOTE 1: ALTERNATE MARKING: STICKER OR STAMP

F4	46101	ISO-G 2 A, TH = 54,2	CD000322
F3	46101	ISO-G 2 A, TH = 54,2	CD000322
F2	46101	ISO-G 2 A, TH = 54,2	CD000322
F1	46101	ISO-G 2 A, TH = 54,2	CD000322
F	24023	220 STUD BOLT LOC. F 4x140x100	00045898_1

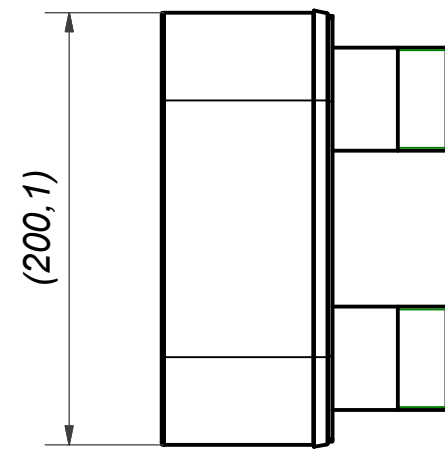
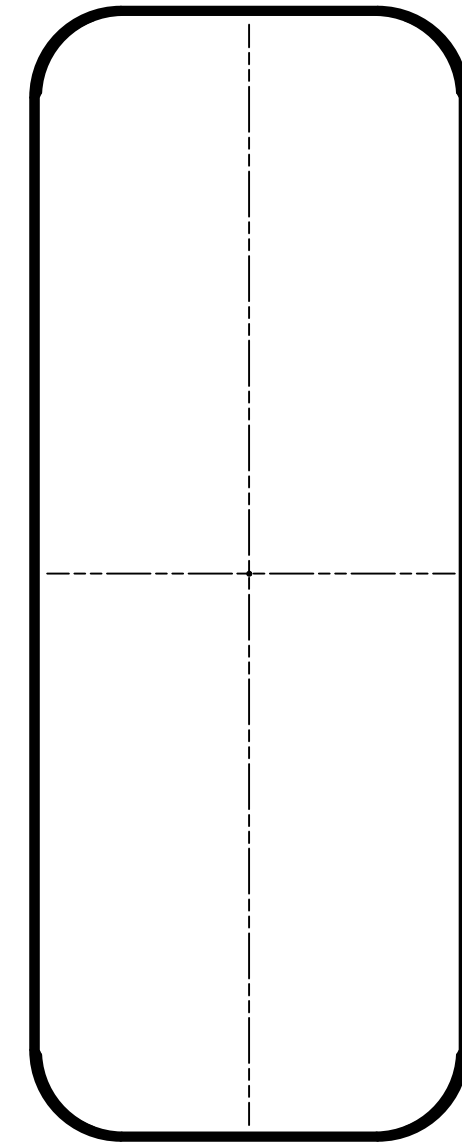
Title			
B220Lx160/1P-SC-S 4x2"			
SWEP A DOVER COMPANY	Created Date	Created By	
	2023-06-15	AU	
	Article/Configuration number	Drawing number	
	7000322	AU00754074_7000322	



Pos	Article No	Title / Denomination, code, material, dimension etc	Drawing No./ref	Pos	Article No	Title / Denomination, code, material, dimension etc	Drawing No./ref
-----	------------	---	-----------------	-----	------------	---	-----------------

Rev No	Alteration	Date	Checked	Approved
02	Updated model.	2019-07-24	skds	PDM



\perp	$\varnothing 0,4$	A			
\oplus	$\varnothing 2$	A	B	C	
	4x				



Item	QTY	Description	Drawing / Article	
F	4	STUD BOLT M12 x 20, ART. NO. 45095	M12x20	
Drawn	Checked	Approved	Created Date	General geometrical tolerancing ISO 2768
skds	PDM	PDM	2018-09-26	General surface finish R_a
				Scale
220 STUD BOLT LOC. F 4x140x100			-	Paper size
Article number	Design Type	Drawing number	Revision	Sheet
24023	CG	00045898	02	1 (1)

Rev No	Alteration	Date	Checked	Approved
05	ECN-000223: update of thread designation + critical char	2022-02-18	10083926	PDM

1,5x45°

ISO-G 2 A [3]

05

25 ± 0,5

44,2 ± 0,1

54,2 ± 0,1 [3]

R2

Z

Rmax 0,4

Min 0,5

0,5 ± 0,1

Z

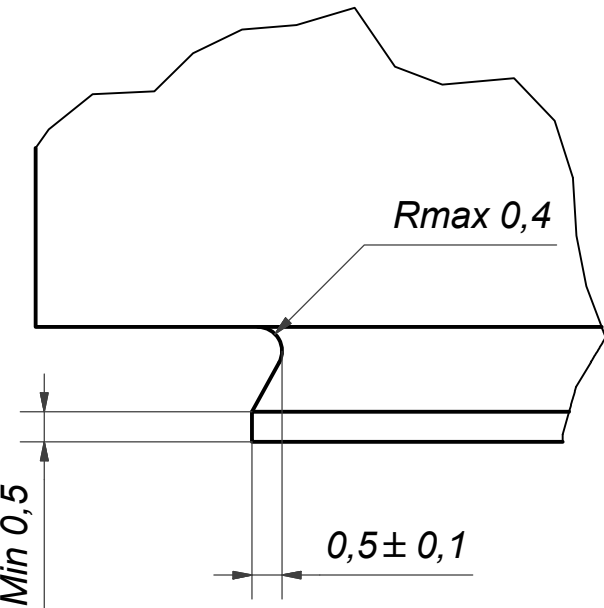
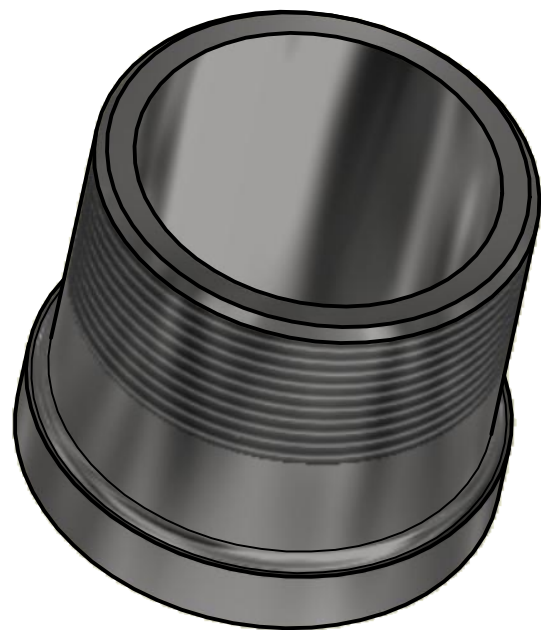
$\phi 49,2^{+0}_{-0,4}$

$\phi 57,85^{+0}_{-0,15}$ [3]

05

$1,9^{+0}_{-0,2}$

$\phi 65 \pm 0,5$



© Company Confidential, Property of SWEP International AB

NOTE 2: [3] - CRITICAL/SPECIAL CHARACTERISTIC TO BE FOLLOWED

NOTE 1: DEBURR SHARP EDGES; MAX 0.4

ACCORDING TO MQS

MATERIAL

Drawn miguser	Checked PDM	Approved PDM	Created Date 1997-02-17	General geometrical tolerancing ISO 2768: m	General surface finish R_a : 3.2		Scale -	Paper size A3
			Title ISO-G 2 A					
			Article number	Design Type CD	Drawing number CD000322	Revision 05	Sheet 1 (1)	