

# B220

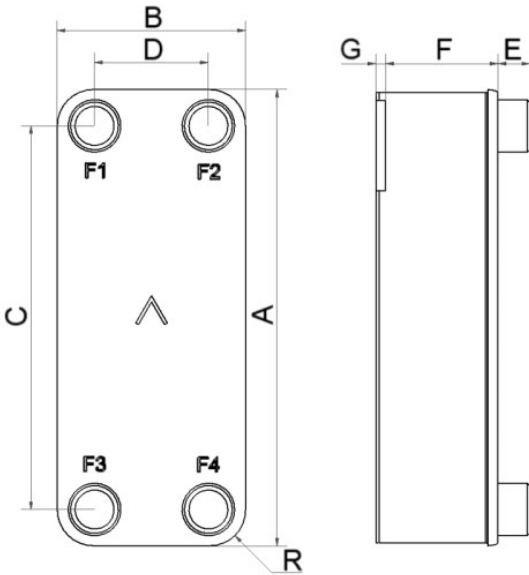
Le modèle B220 est un échangeur de chaleur à plaques brasées compact mais très efficace, offrant une excellente efficacité de transfert thermique à faible coût. L'une de ses principales applications est le chauffage haute efficacité de l'eau chaude sanitaire (ECS), mais on peut aussi l'utiliser dans d'autres applications à une phase telles que le refroidissement de l'huile, le chauffage domestique et les désurchauffeurs. Grâce à sa construction à deux types de plaques, on peut varier la longueur thermique pour obtenir un produit personnalisé aux performances optimales pour chaque application.



## Spécifications de base

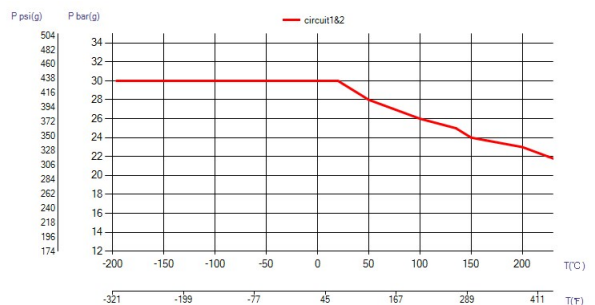
|                                      |  |
|--------------------------------------|--|
| Nombre de plaques max. (NoP)         | 300  |
| Débit volumétrique max.              | 39 m <sup>3</sup> /h (171.71 gpm)                          |
| Volume du canal                      | 0.14/0.14 dm <sup>3</sup> (0.0049/0.0049 ft <sup>3</sup> ) |
| Matières                             | Plaques en acier inoxydable 316/316L, brasage cuivre       |
| Poids sans les connexions            | 5.30+(0.321*NoP) kg<br>11.68+(0.708*NoP) lb                |
| Taille la taille des Particules (mm) | 0,7  |

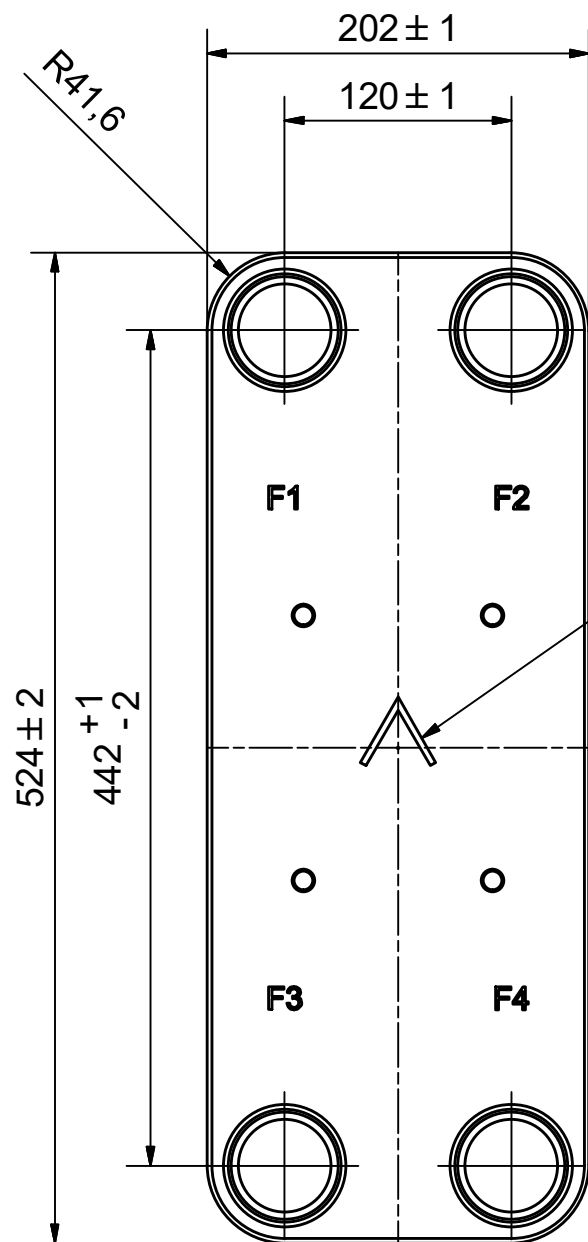
## Les dimensions standard



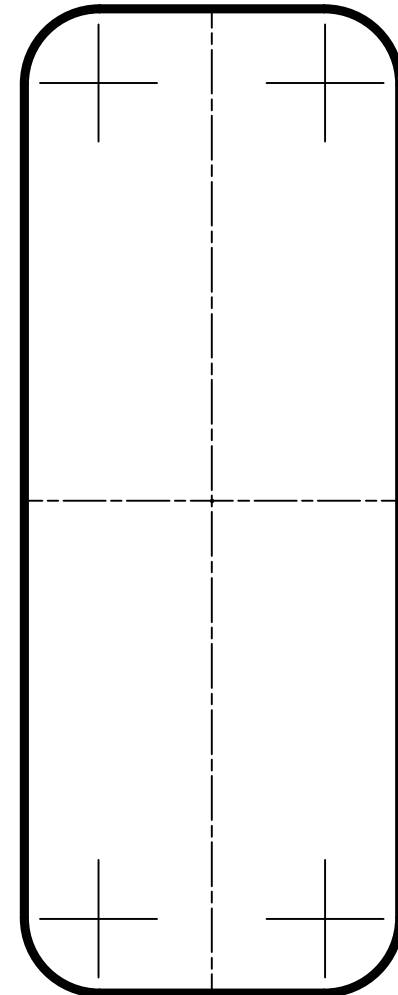
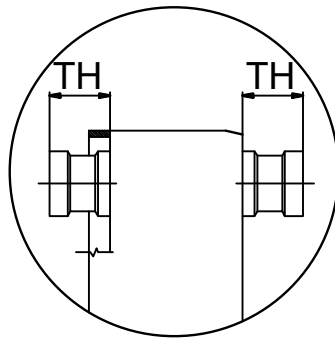
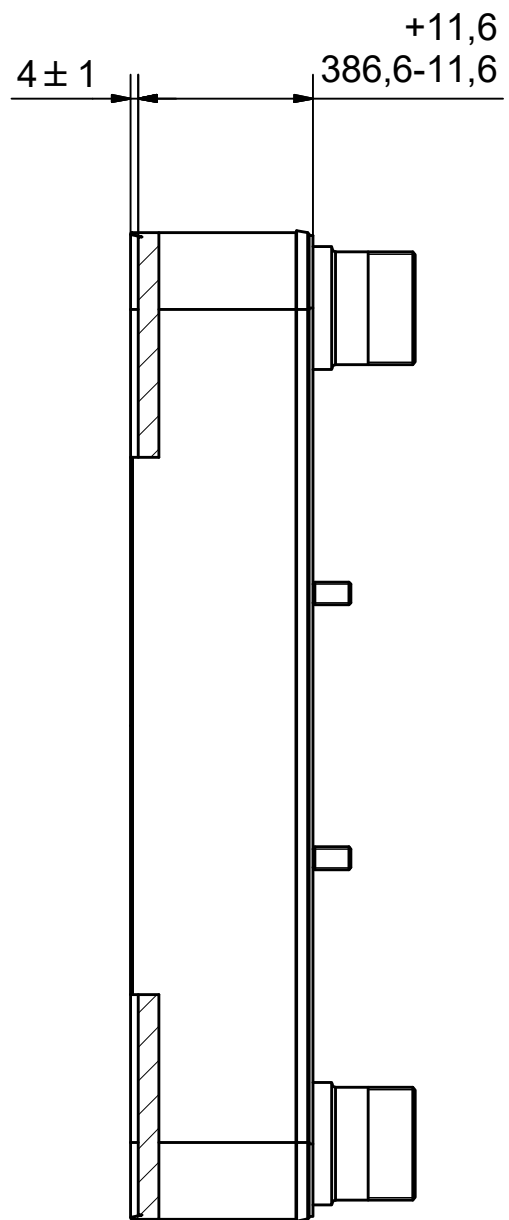
| #   | MM              | IN              |
|-----|-----------------|-----------------|
| A   | 524             | 20.63           |
| B   | 202             | 7.95            |
| C   | 442             | 17.4            |
| D   | 120             | 4.72            |
| F   | 6,00+1,73*(NoP) | 0.24+0.07*(NoP) |
| G   | 4               | 0.16            |
| R   | 41.60           | 1.64            |
| E_1 | 54              | 2.13            |
| E_2 | 27              | 1.06            |
| E_3 | 30              | 1.18            |

## PED pression / température







NOTE 1



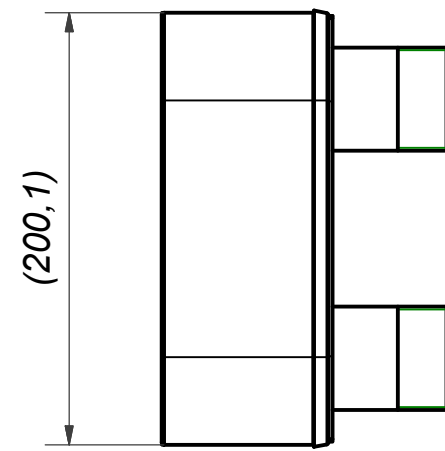
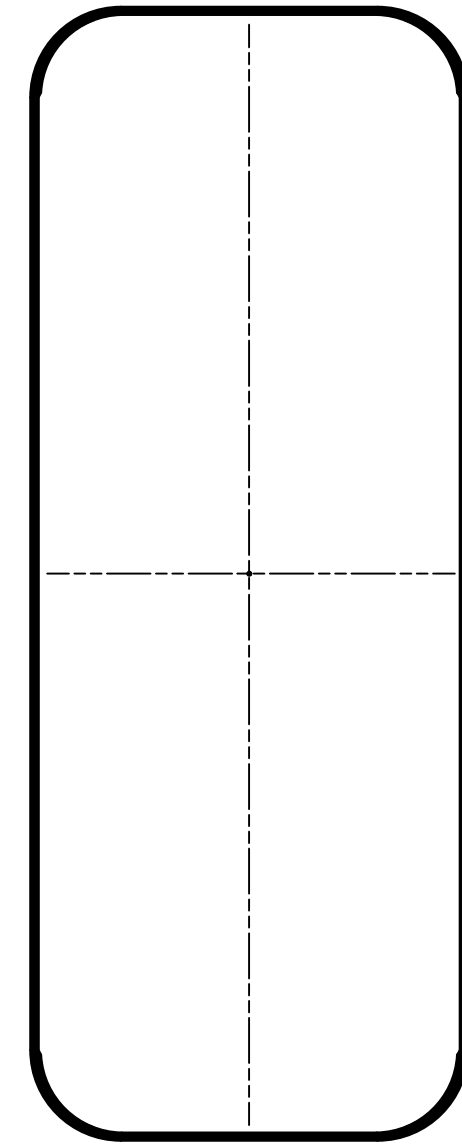
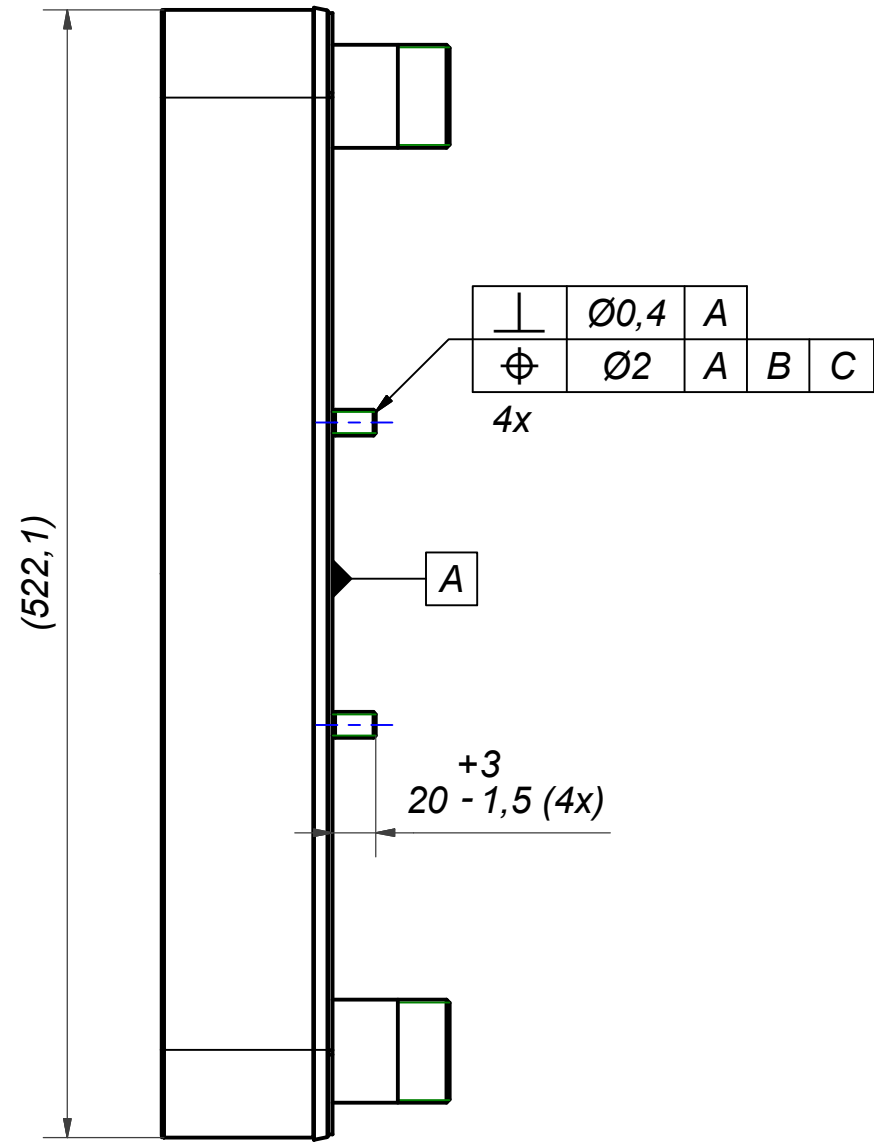
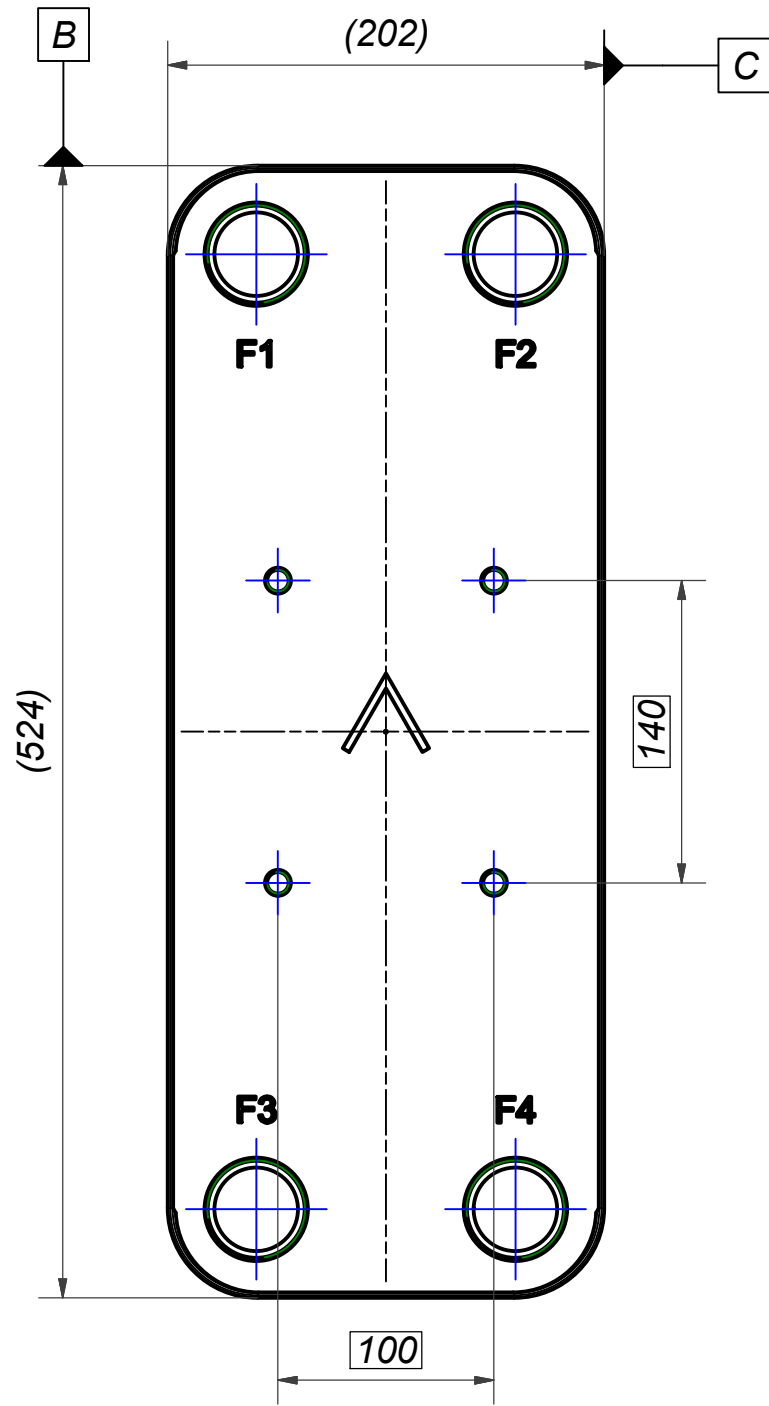
**NOTE 1: ALTERNATE MARKING: STICKER OR STAMP**


|    |       |                                |            |
|----|-------|--------------------------------|------------|
| F4 | 46101 | ISO-G 2 A, TH = 54,2           | CD000322   |
| F3 | 46101 | ISO-G 2 A, TH = 54,2           | CD000322   |
| F2 | 46101 | ISO-G 2 A, TH = 54,2           | CD000322   |
| F1 | 46101 | ISO-G 2 A, TH = 54,2           | CD000322   |
| F  | 24023 | 220 STUD BOLT LOC. F 4x140x100 | 00045898_1 |

|  |                              |                    |   |
|--|------------------------------|--------------------|---|
| Title  |                              |                    |   |
| <b>B220Lx220/1P-SC-S 4x2"</b>  |                              |                    |   |
| <br>A DOVER COMPANY | Created Date                 | Created By         |  |
|  | 2023-06-15                   | AU                 |   |
|  | Article/Configuration number | Drawing number     |   |
|  | 7000325                      | AU00754073_7000325 |   |

| Pos | Article No | Title / Denomination, code, material, dimension etc | Drawing No./ref | Pos | Article No | Title / Denomination, code, material, dimension etc | Drawing No./ref |
|-----|------------|---|-----------------|-----|------------|---|-----------------|
|-----|------------|---|-----------------|-----|------------|---|-----------------|

| Rev No | Alteration     | Date       | Checked | Approved |
|--------|----------------|------------|---------|----------|
| 02     | Updated model. | 2019-07-24 | skds    | PDM      |



|  |         |                                    |                |   |                                |                   |            |
|--|---------|------------------------------------|----------------|---|--------------------------------|-------------------|------------|
| F  | 4       | STUD BOLT M12 x 20, ART. NO. 45095 |                |   |                                | M12x20            |            |
| Item   | QTY     | Description                        |                |   |                                | Drawing / Article |            |
| Drawn  | Checked | Approved                           | Created Date   | General geometrical tolerancing ISO 2768: | General surface finish $R_a$ : | Scale             | Paper size |
| skds   | PDM     | PDM                                | 2018-09-26     |   |                                | -                 | A3         |
| <br>A DOVER COMPANY |         | Title                              |                |   |                                |                   |            |
|  |         | 220 STUD BOLT LOC. F 4x140x100     |                |   |                                |                   |            |
| Article number   |         | Design Type                        | Drawing number | Revision                                  | Sheet                          |                   |            |
| 24023  |         | CG                                 | 00045898       | 02  | 1 (1)                          |                   |            |

| Rev No | Alteration   | Date       | Checked  | Approved |
|--------|--|------------|----------|----------|
| 05     | ECN-000223: update of thread designation + critical char | 2022-02-18 | 10083926 | PDM      |

1,5x45°

ISO-G 2 A [3]

05

25 ± 0,5

44,2 ± 0,1

54,2 ± 0,1 [3]

R2

Z

Rmax 0,4

Min 0,5

0,5 ± 0,1

Z

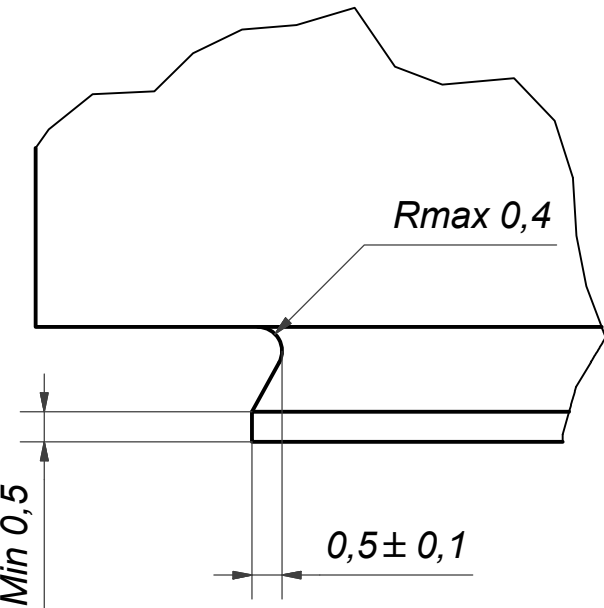
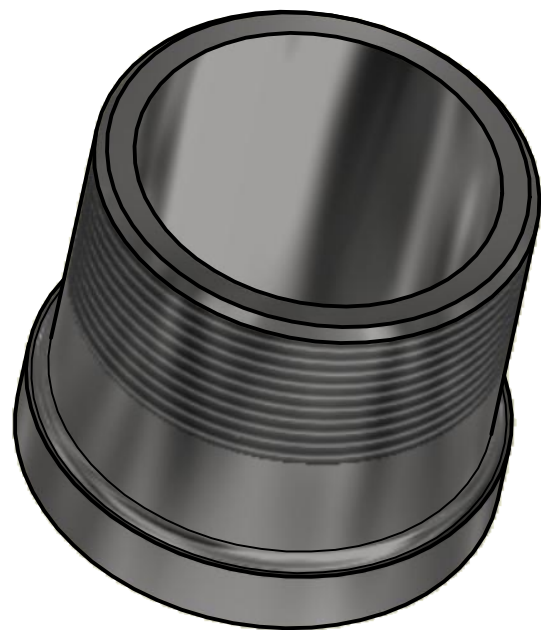
Ø49,2<sup>+0</sup> - 0,4

Ø57,85<sup>+0</sup> - 0,15 [3]

05

1,9<sup>+0</sup> - 0,2

Ø65 ± 0,5



© Company Confidential, Property of SWEP International AB

**NOTE 2: [3] - CRITICAL/SPECIAL CHARACTERISTIC TO BE FOLLOWED**

**NOTE 1: DEBURR SHARP EDGES; MAX 0.4**

ACCORDING TO MQS  
MATERIAL

|                  |                |                 |                            |  |  |                |                |                  |
|------------------|----------------|-----------------|----------------------------|--|--|----------------|----------------|------------------|
| Drawn<br>miguser | Checked<br>PDM | Approved<br>PDM | Created Date<br>1997-02-17 | General geometrical tolerancing ISO 2768:<br>m | General surface finish R <sub>a</sub> :<br>3.2 |                | Scale<br>-     | Paper size<br>A3 |
|                  |                |                 | Title<br>ISO-G 2 A         |  |  |                |                |                  |
|                  |                |                 | Article number<br>CD       | Design Type<br>CD                              | Drawing number<br>CD000322                     | Revision<br>05 | Sheet<br>1 (1) |                  |