

# B320LT

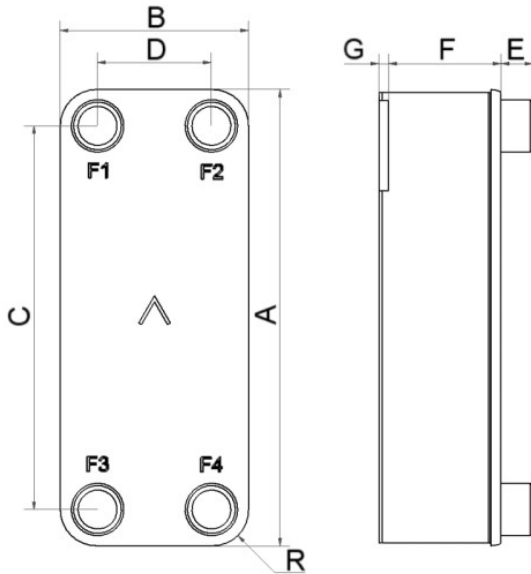
Le nouveau modèle B320LT offre des solutions efficaces pour de nombreuses applications exigeantes, comme le chauffage collectif, les refroidisseurs d'huile et différentes applications industrielles. Ce produit fait partie de la nouvelle gamme SWEF avec une capacité plus élevée. Il permet une longueur thermique flexible via l'optimisation de la disposition des plaques. Il fournit une excellente intégration de l'application, combinant efficacité thermique élevée et élargissement de ses capacités.



## Spécifications de base

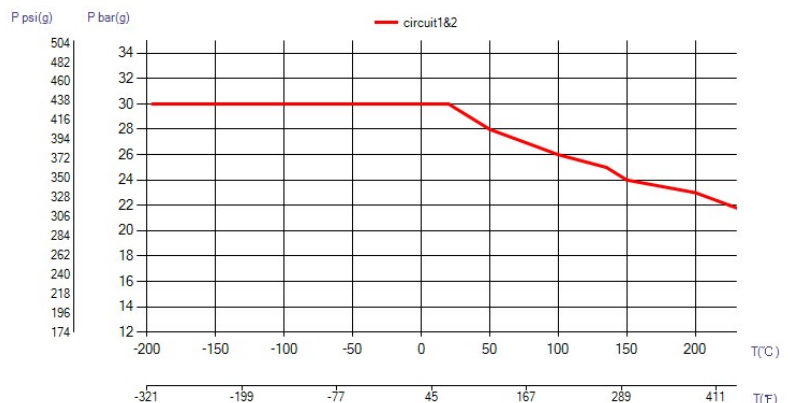
Nombre de plaques max. (NoP)	260
Débit volumétrique max.	76,2 m <sup>3</sup> /h (8.81 gpm)
Volume du canal	0.26/0.26 dm <sup>3</sup> (0.0092/0.0092 ft <sup>3</sup> )
Matières	Plaques en acier inoxydable 316, brasage cuivre
Poids sans les connexions	9.43+(0.432*NoP) kg 20.80+(0.952*NoP) lb

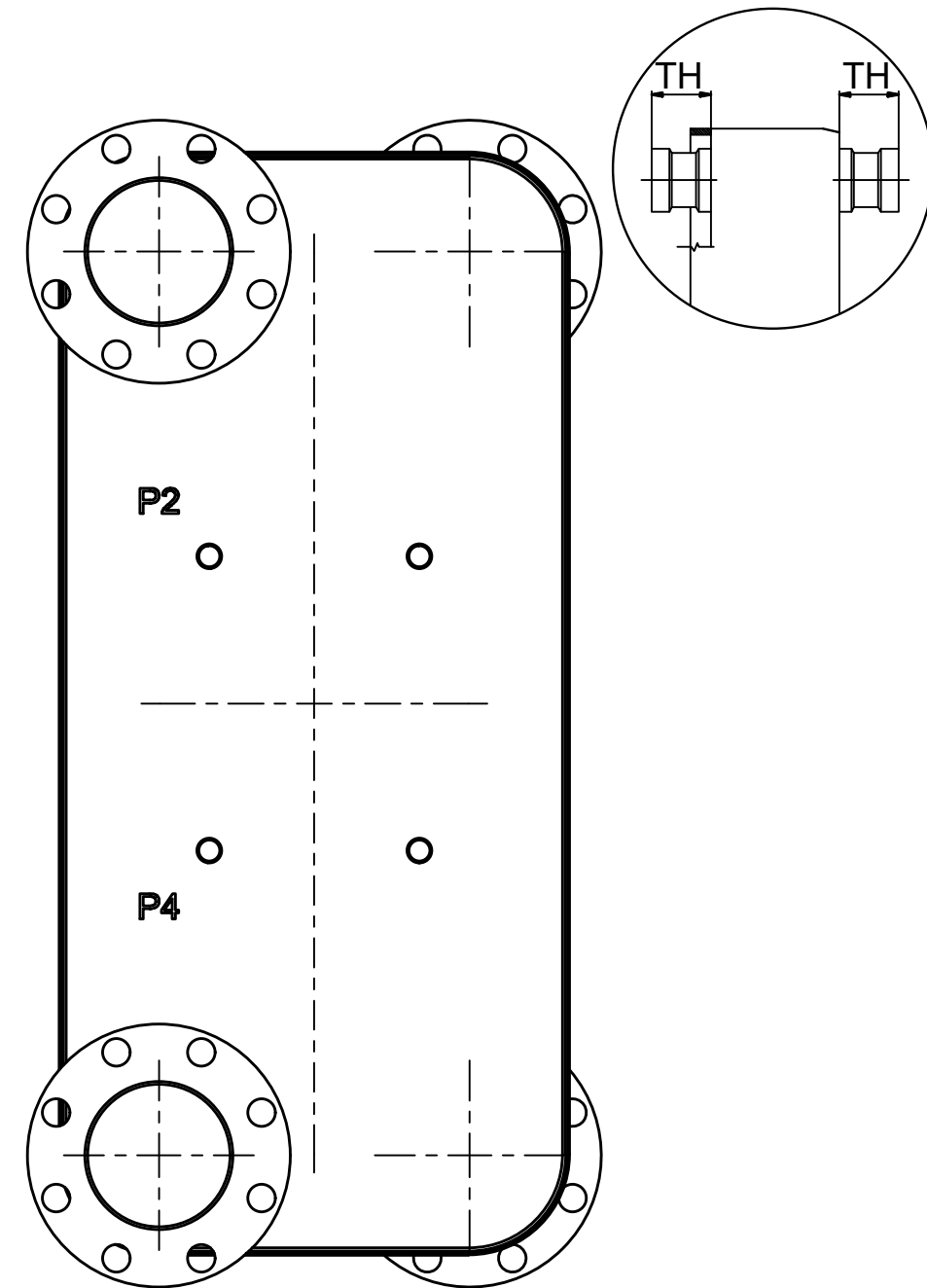
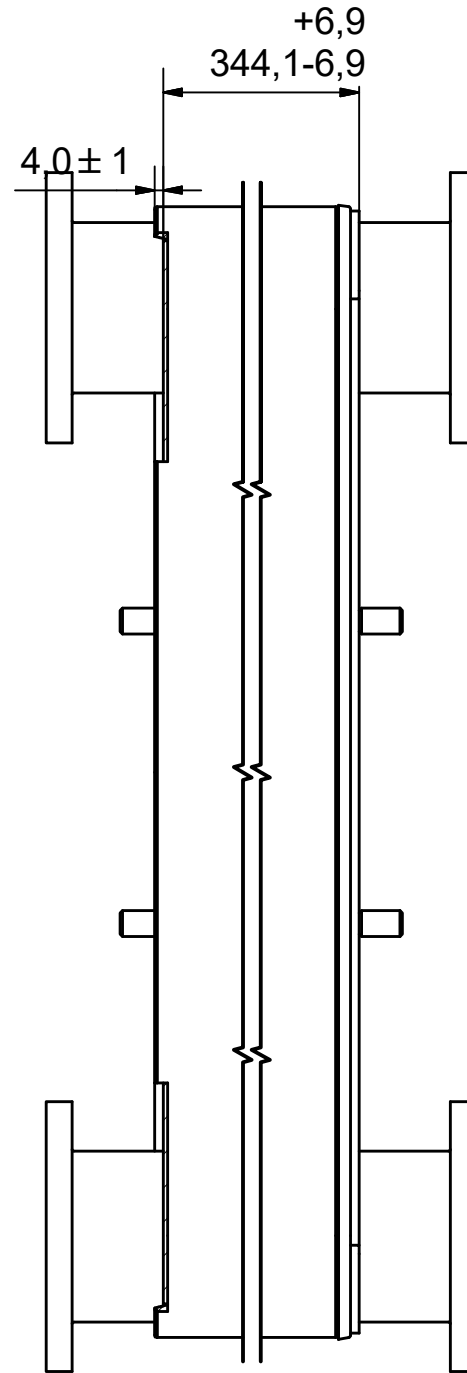
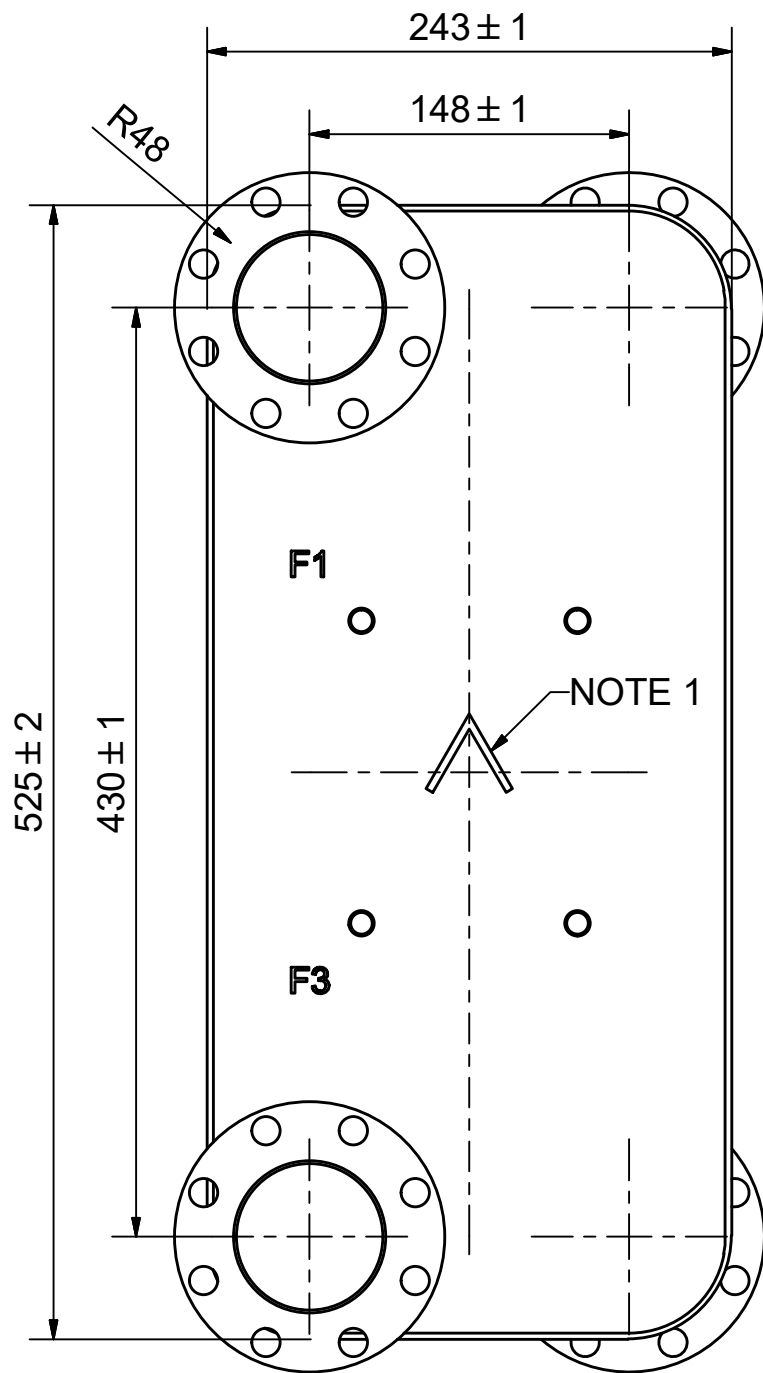
## Les dimensions standard



#	MM	IN
A	525	20.67
B	243	9.57
C	430	16.93
D	148	5.83
F	10.00+2.57*(NoP)	0.39+0.1*(NoP)
G	4	0.16
R	48	1.89
E_1	54	2.13

## PED pression / température




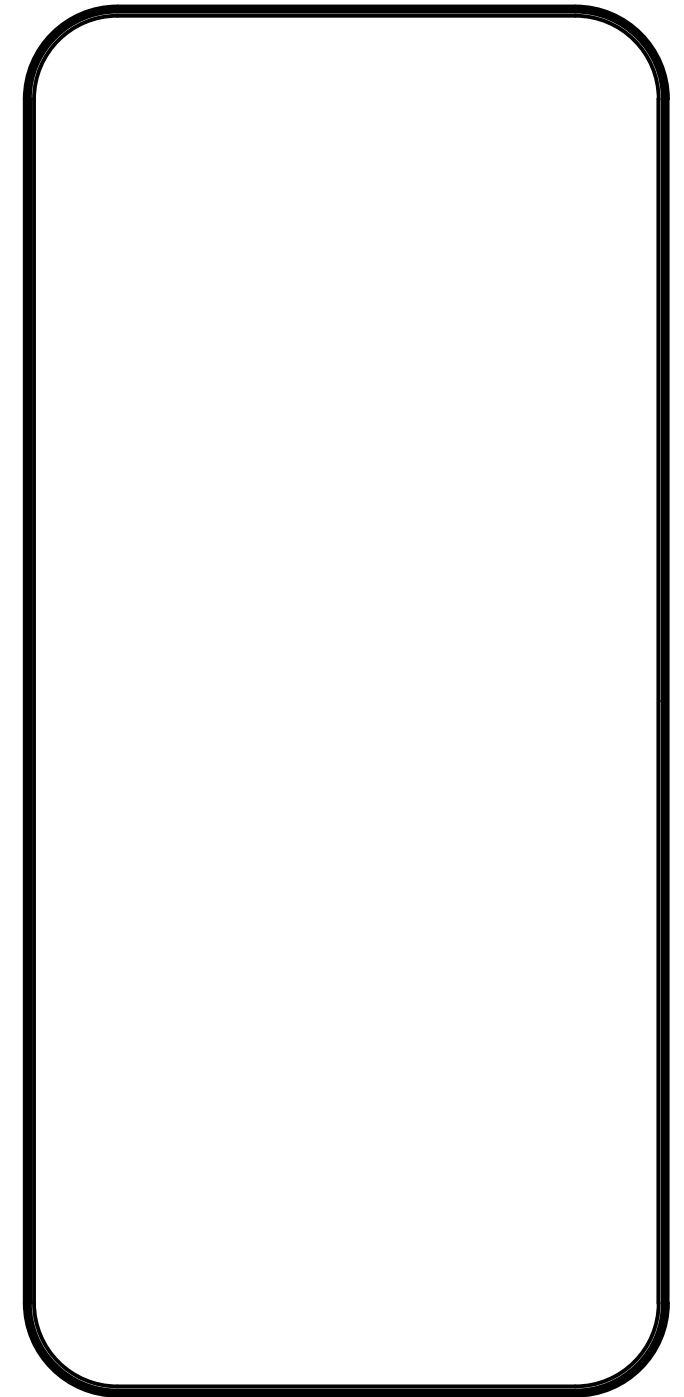
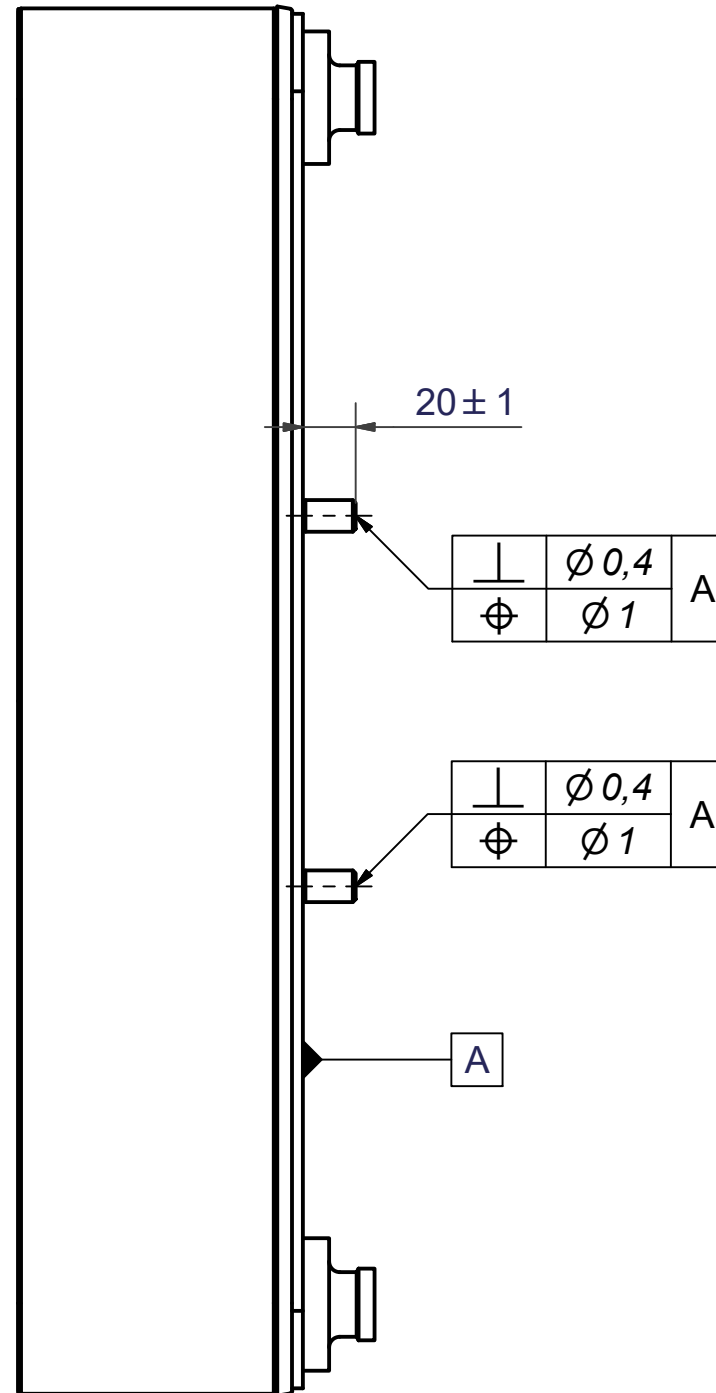
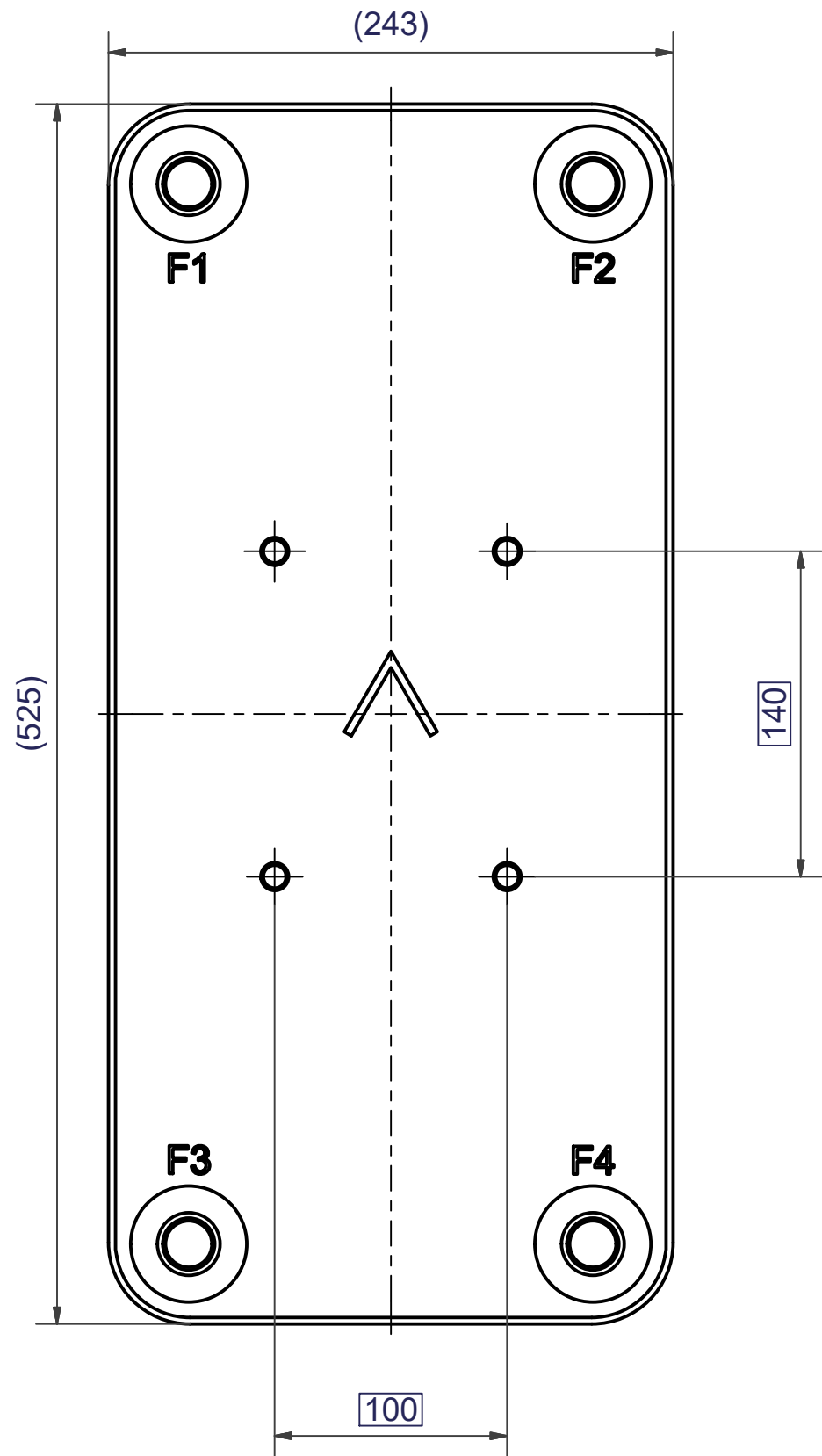


NOTE 1 ALTERNATE MARKING: STICKER OR STAMP

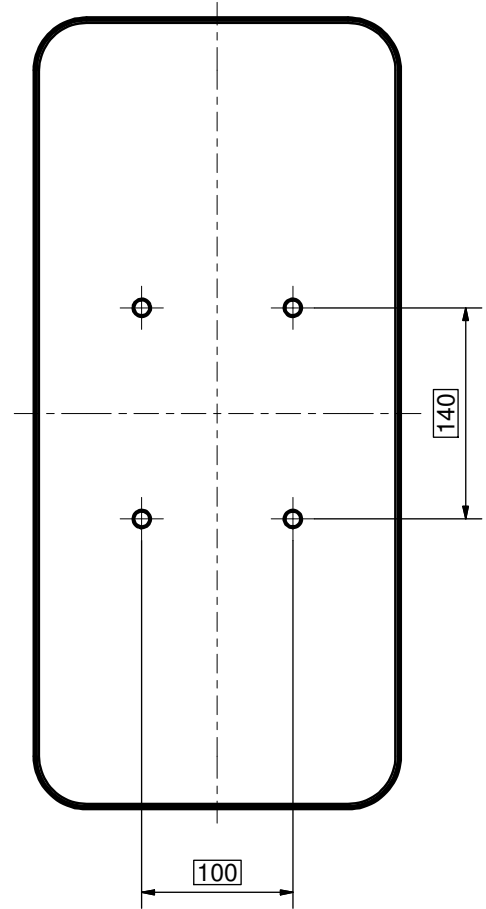
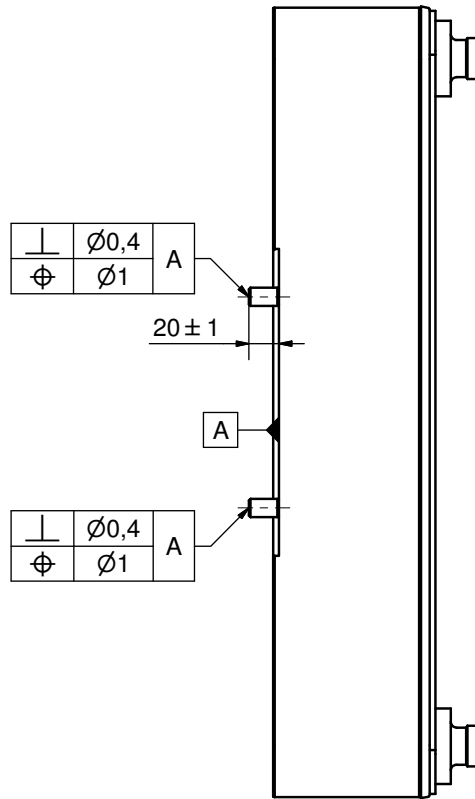
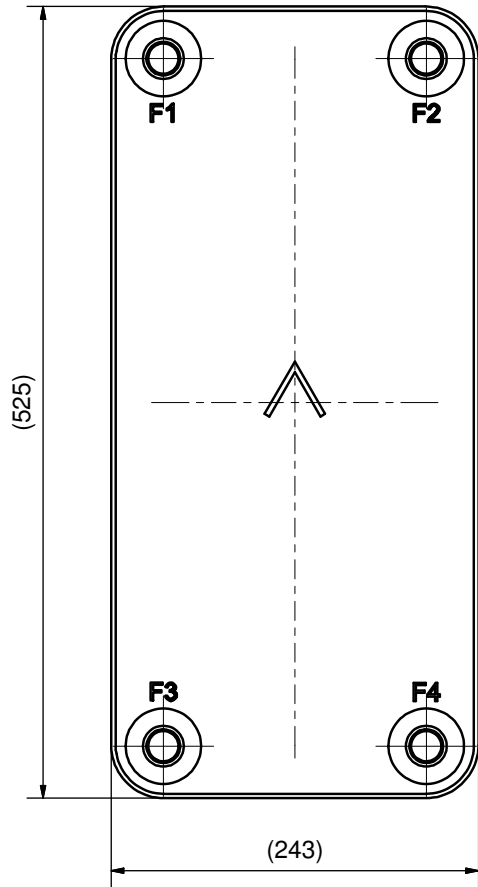
**AXINTRA**  
ÉCHANGEURS THERMIQUES


Pos	Article No	Title / Denomination, code, material, dimension etc	Drawing No./ref	Pos	Article No	Title / Denomination, code, material, dimension etc	Drawing No./ref
F3	46110	FLANGE DN65C PN40, TH = 54,2	CD000328	P4	46110	FLANGE DN65C PN40, TH = 54,2	CD000328
F1	46110	FLANGE DN65C PN40, TH = 54,2	CD000328	P2	46110	FLANGE DN65C PN40, TH = 54,2	CD000328
F	21118	B120T/50 BOLT LOC F 4x C140x100	CG450024_1	P	21120	B120T/50 S.B. LOC P 4xC140x100	CG450019_1

Title			
<b>B320LTHx130/1P-SC-S 2xDN65C / 2xDN65C</b>			
 A DOVER COMPANY		Created Date 2024-01-09	Created By AU
		Article/Configuration number 03430286.0	Drawing number AU00774559_03430286.0

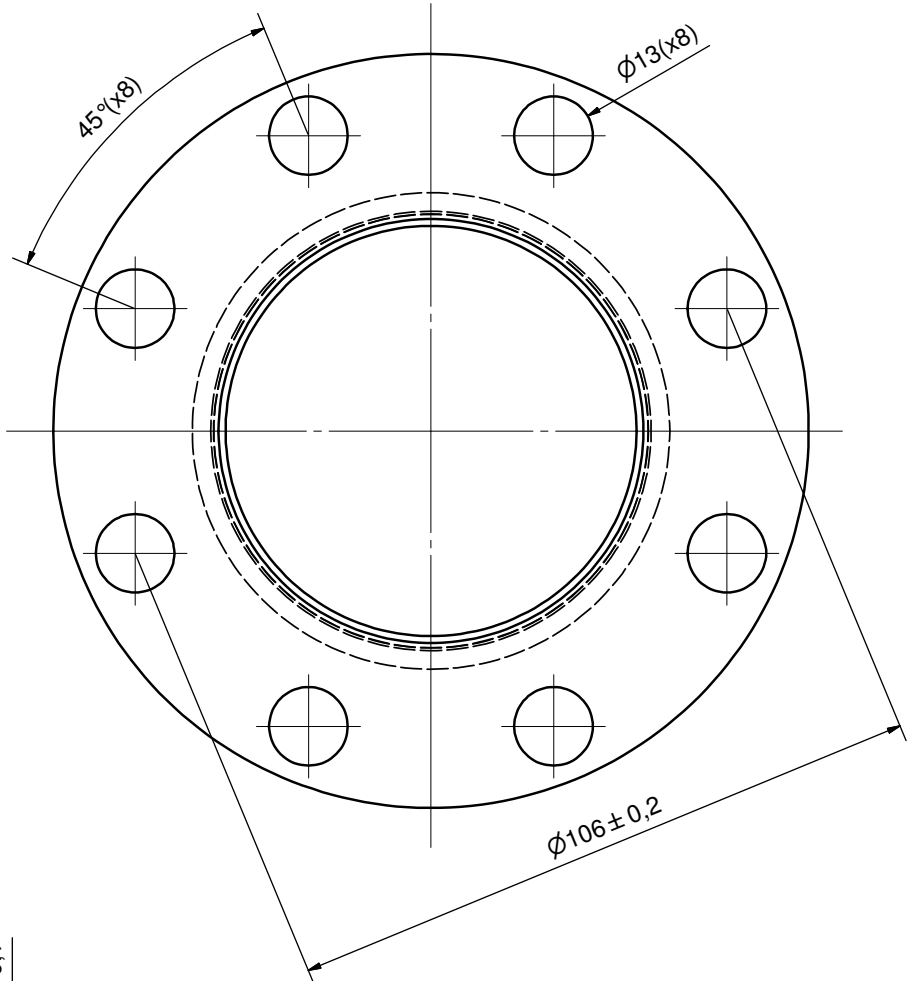
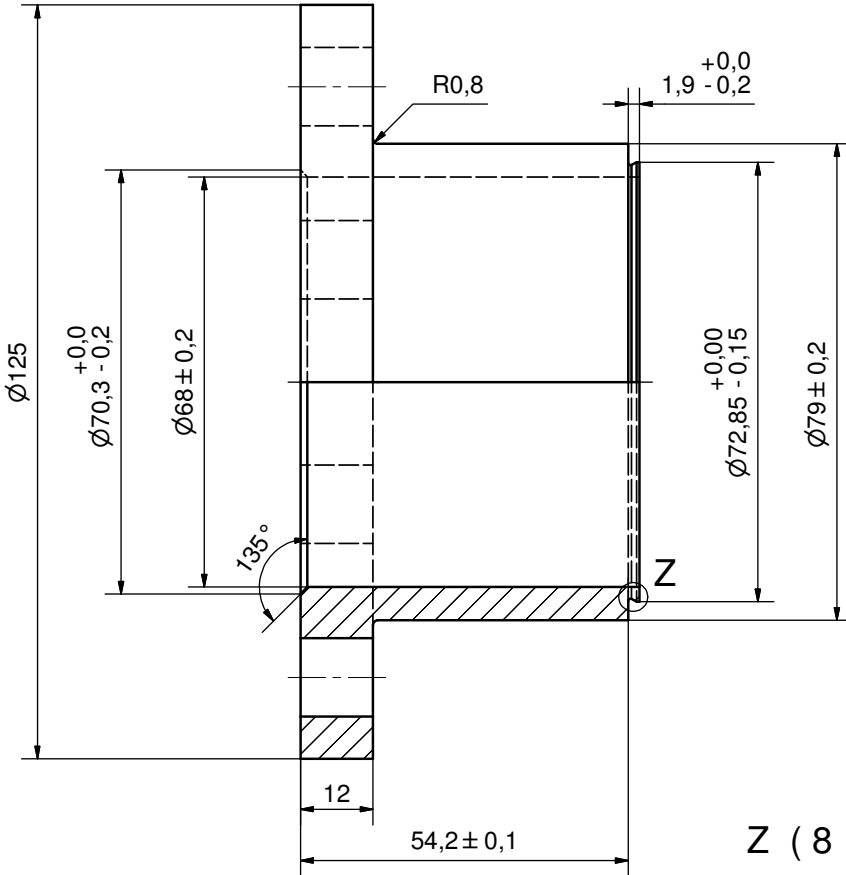
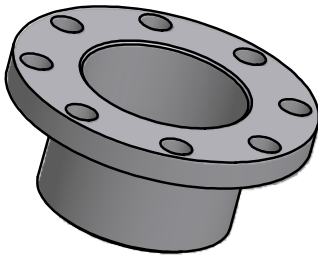


1	4	STUD BOLT M12x20 ART. NO. 45095	M12x20
IT	QTY	DESCRIPTION	Drawing No./Ref
lathe	PDM	PDM	2004-10-12
General geometrical tolerancing ISO 2768:		m	General surface finish R <sub>a</sub> : 3.2
Title		B120T/50 BOLT LOC F 4x C140x100	
Article number		21118	Drawing number
Revision		00	Sheet
Scale		1:1	
A DOVER COMPANY		CG450024	1 (1)

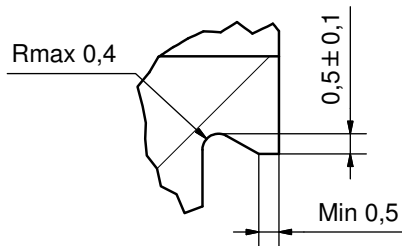


1	4	STUD BOLT M12x20 ART.NO 45095				M12x20
IT	QTY	TITLE				Drawing No.
Drawn	Checked	Approved	Created Date	General geometrical tolerancing ISO 2768	General surface finish $R_a$	Scale
ANO	PDM	PDM	2005-02-28	m	3.2	1:1
		Title				
		B120T/50 S.B. LOC P 4xC140x100				
Article number		Drawing number		Revision	Sheet	
21120		CG450019		-	1 (1)	
A DOVER COMPANY						

Rev No.	Alteration	Date	Checked	Approved
4	ADDED DEBURR & MATERIAL INFO	2009/07/22	AP	PDM



Z (8 : 1)



DEBURR SHARP EDGES; MAX 0,4

ACCORDING TO MQS  
MATERIAL

Drawn	Checked	Approved	Created Date	General geometrical tolerancing ISO 2768	General surface finish Ra	Scale
RJ	EG	BOS	1991-02-18	m	3.2	6:5
			Title			
			FLANGE DN65C PN40			
Article number		Drawing number		Revision	Sheet	
-		CD000328		4	1 (1)	