

B35TDWM4x100/1P-SC-H 4x2 1/2" (54)

Code : 16707-100 / 0282749.0
avec studbolts 21112

Fiche technique et plans

BDW35TDW

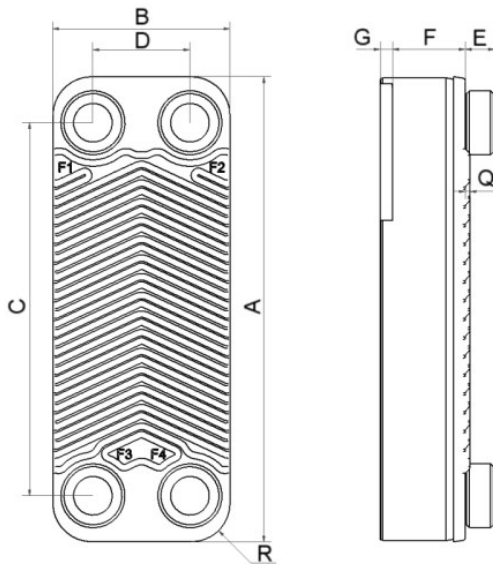
Le B35TDW est conçu pour diverses applications, telles que la production d'eau chaude sanitaire, le refroidissement d'huile de transformateur, les désurchauffeurs, et la récupération de chaleur des compresseurs pneumatiques. La technologie à double-paroi de SWEP garantit la séparation des liquides et la visibilité des fuites internes, qui sont des facteurs de sécurité prioritaires pour de nombreuses applications.



Spécifications de base

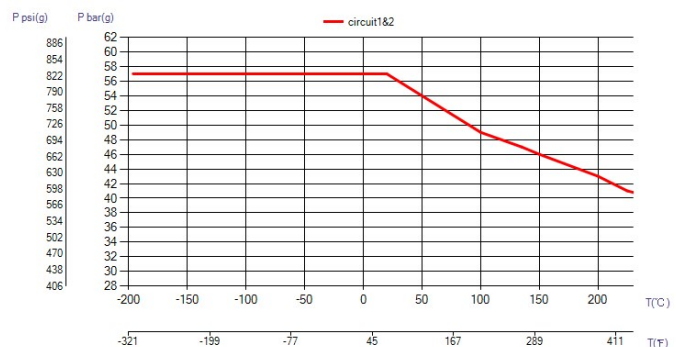
Nombre de plaques max. (NoP)	260
Débit volumétrique max.	58 m³/h (255.37 gpm)
Volume du canal	0.18/0.18 dm³ (0.0064/0.0064 ft³)
Matières	Plaques en acier inoxydable 316/316L, brasage cuivre
Poids sans les connexions	12.29+(0.494*NoP) kg 27.09+(1.089*NoP) lb

Les dimensions standard



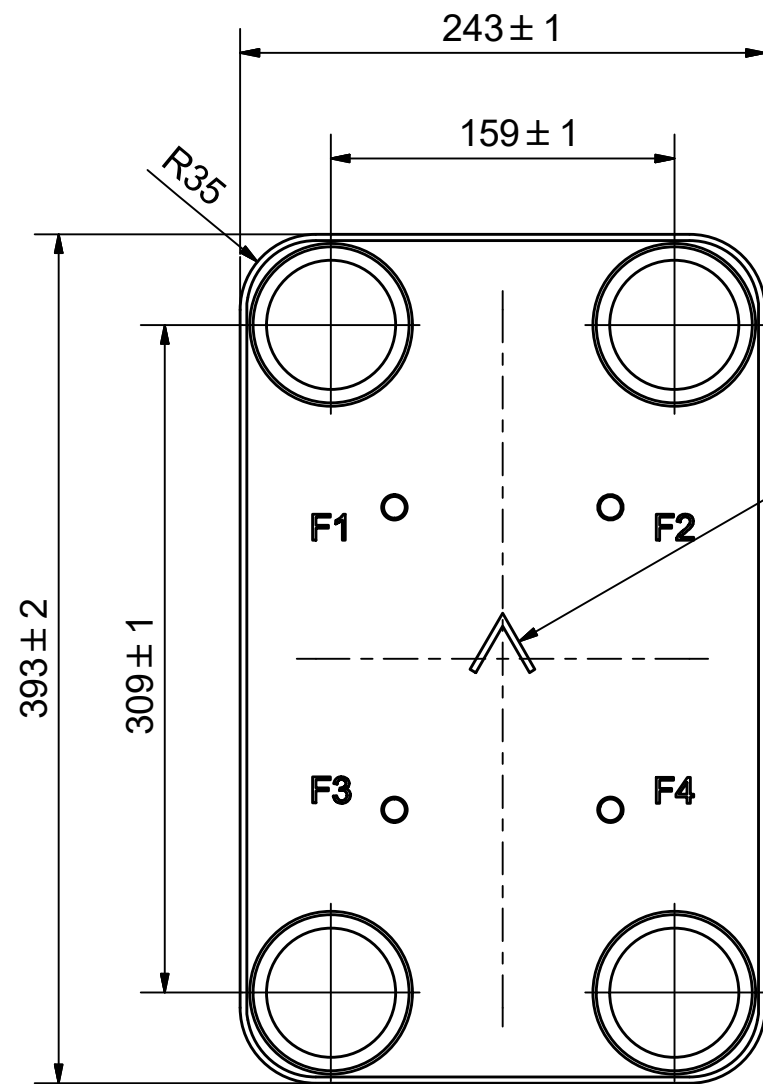
#	MM	IN
A	393	15.47
B	243	9.57
C	309	12.17
D	159	6.26
F	18,00+2,53*(NoP)	70.87+9.96*(NoP)
G	0	0
R	35	1.38
E_1	27	1.06

PED pression / température

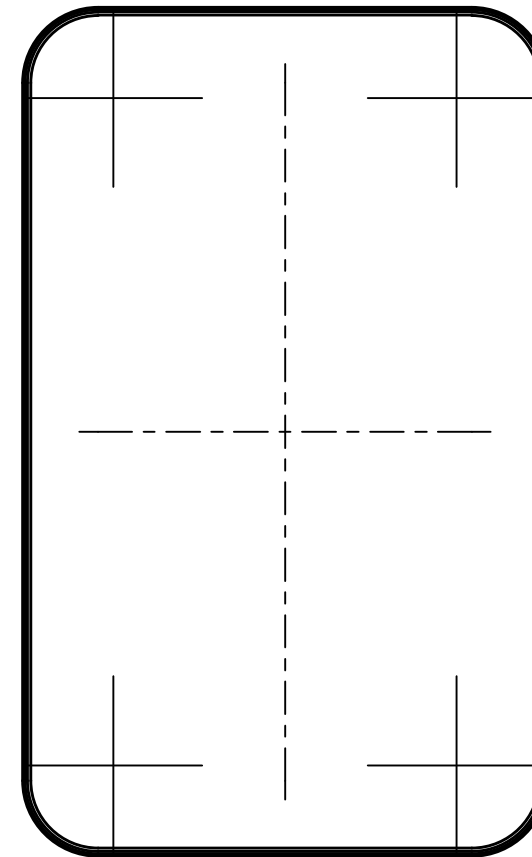
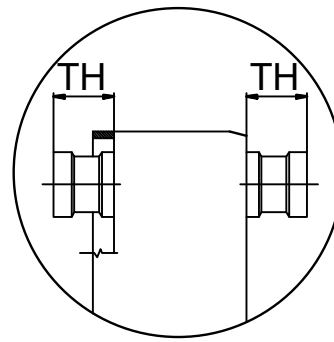
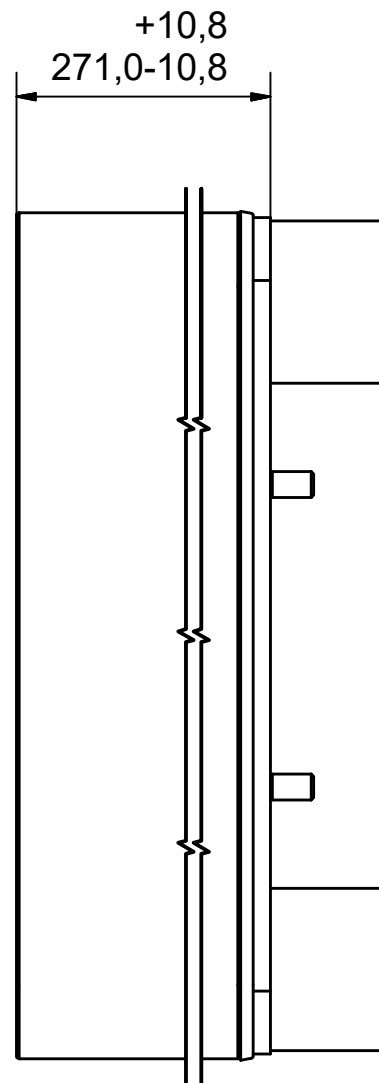


AXINTRA

ÉCHANGEURS THERMIQUES



NOTE 1





AXINTRA
ÉCHANGEURS THERMIQUES

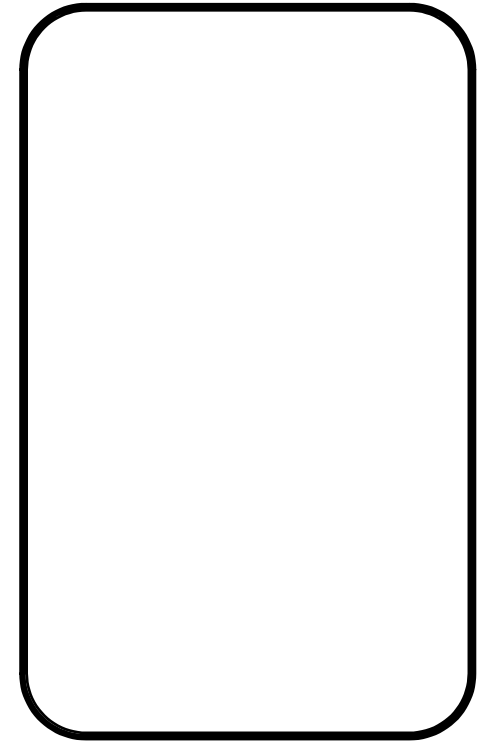
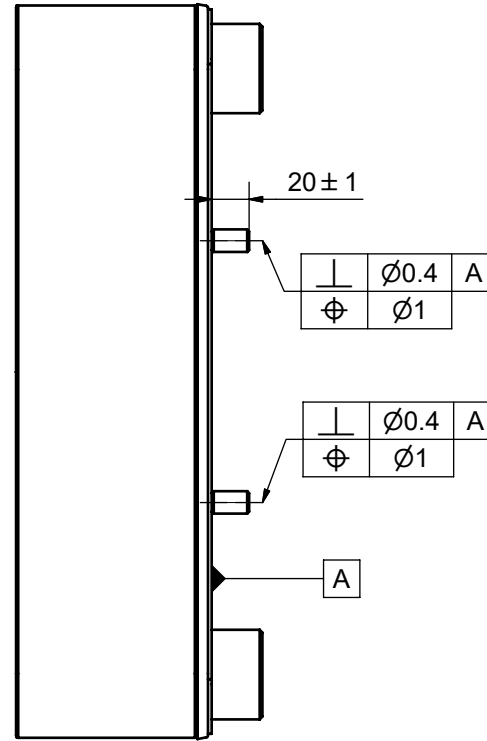
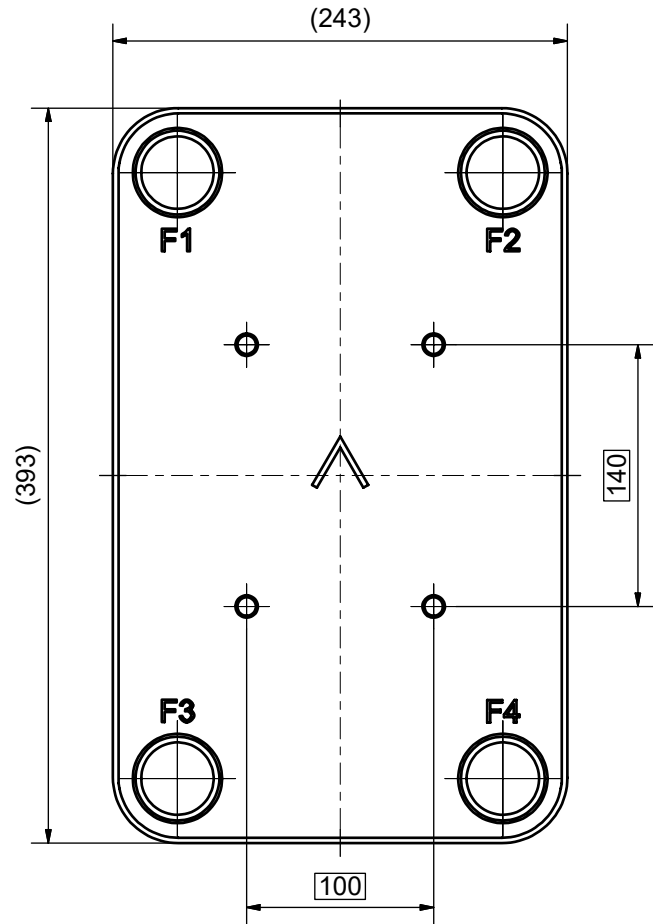
NOTE 1 ALTERNATE MARKING: STICKER OR STAMP

F4	45311	ISO-G 2 1/2 A, TH = 54,2	CD000051
F3	45311	ISO-G 2 1/2 A, TH = 54,2	CD000051
F2	45311	ISO-G 2 1/2 A, TH = 54,2	CD000051
F1	45311	ISO-G 2 1/2 A, TH = 54,2	CD000051
F	21112	B35 BOLT LOC F 4x C140x100	CG350001_1



Pos	Article No	Title / Denomination, code, material, dimension etc	Drawing No./ref	Pos	Article No	Title / Denomination, code, material, dimension etc	Drawing No./ref
-----	------------	---	-----------------	-----	------------	---	-----------------

Title B35TDWM4x100/1P-SC-H 4x2 1/2"			
 A DOVER COMPANY	Created Date 2024-01-29	Created By AU	
	Article/Configuration number 0282749.0	Drawing number AU00777620_0282749.0	

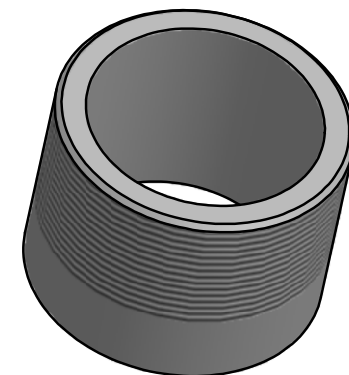
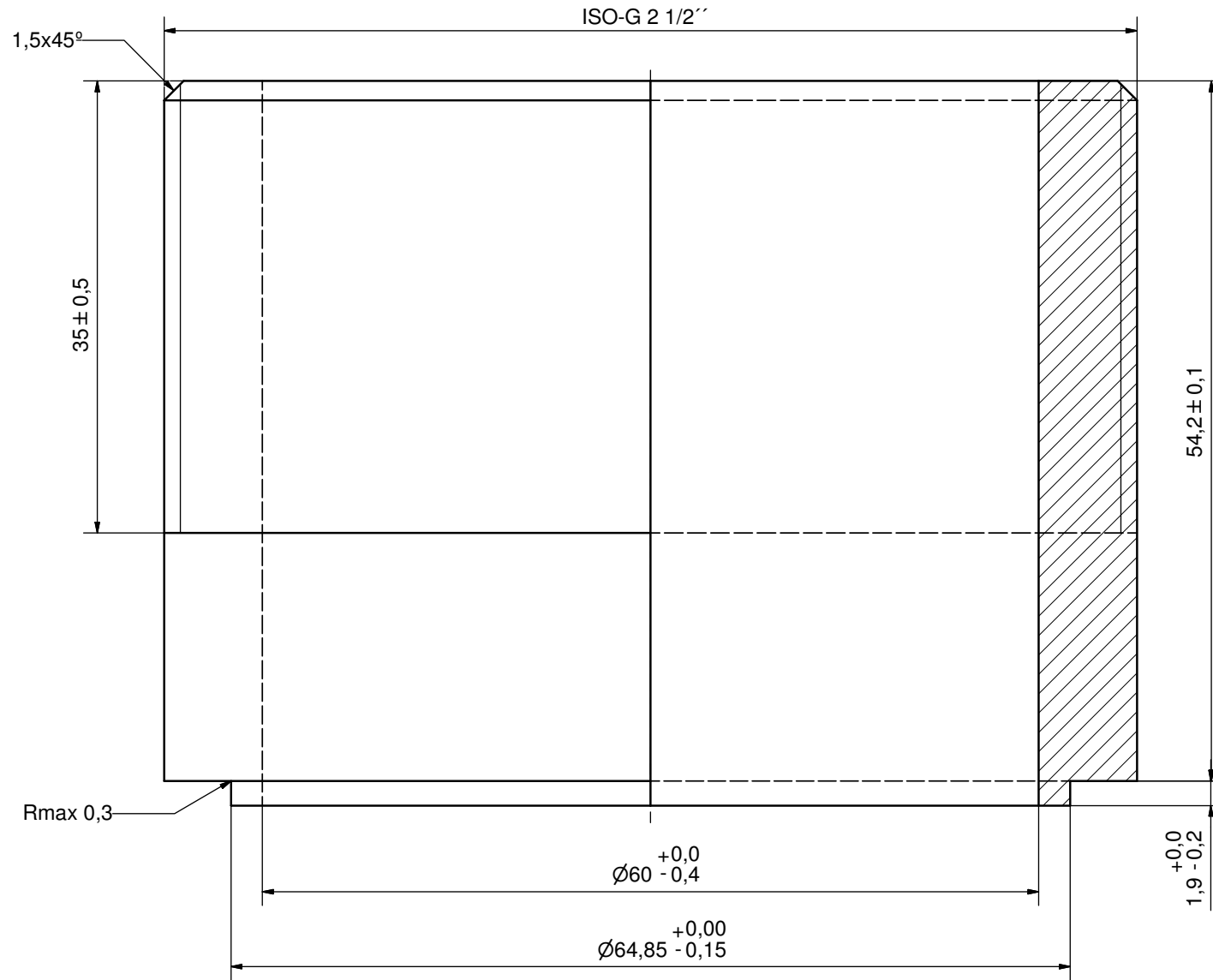
Rev No.	Alteration	Date	Checked	Approved
2	REDRAWN IN INVENTOR	2004/12/10	PDM	PDM



© Company Confidential, Property of SWEP International AB


1	4	STUD BOLT M12 x 20, ART. NO. 45095				M12 x 20
ITE	QTY	DESCRIPTION				Drawing No.
Drawn	Checked	Approved	Created Date	General geometrical tolerancing ISO 2768	General surface finish R_a	Scale
JA	PDM	PDM	2004/10/12	m	3.2	1:1
			Title B35 BOLT LOC F 4x C140x100			
Article number 21112		Drawing number CG350001		Revision 2	Sheet 1 (1)	
						

Rev No.	Alteration	Date	Checked	Approved
8	ADDED DEBURR AND MATERIAL INFO	2009/07/28	RJ	PDM



DEBURR SHARP EDGES; 0.4MAX

ACCORDING TO MQS
MATERIAL

Drawn	SA	Checked	TP	Approved	VP	Created Date	1991-03-15	General geometrical tolerancing ISO 2768	m	General surface finish R _a	3.2	Scale	-
		ISO-G 2 1/2											
Article number	-		Drawing number		CD000051		Revision		8		Sheet		1 (1)