

BDW35TDW

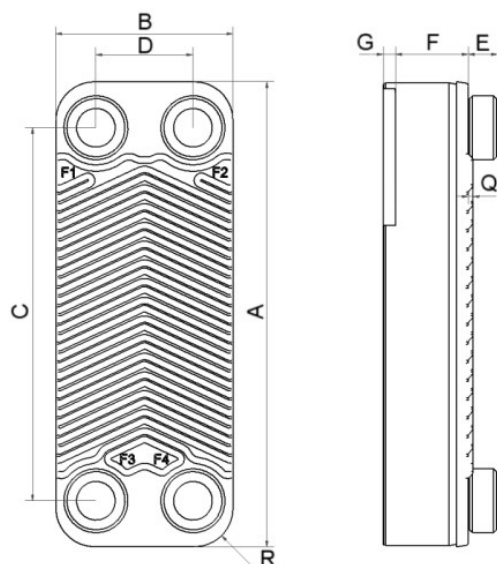
Le B35TDW est conçu pour diverses applications, telles que la production d'eau chaude sanitaire, le refroidissement d'huile de transformateur, les désurchauffeurs, et la récupération de chaleur des compresseurs pneumatiques. La technologie à double-paroi de SWEP garantit la séparation des liquides et la visibilité des fuites internes, qui sont des facteurs de sécurité prioritaires pour de nombreuses applications.



Spécifications de base

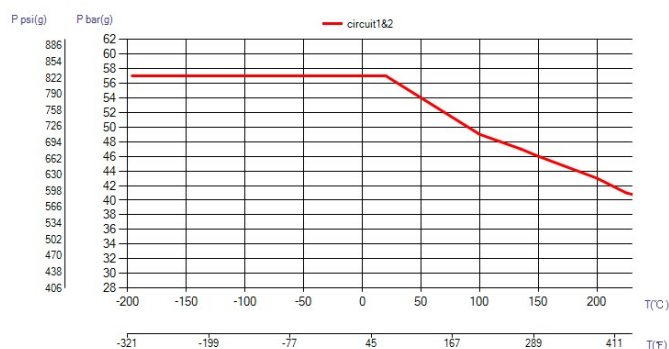
Nombre de plaques max. (NoP)	260
Débit volumétrique max.	58 m ³ /h (255.37 gpm)
Volume du canal	0.18/0.18 dm ³ (0.0064/0.0064 ft ³)
Matières	Plaques en acier inoxydable 316/316L, brasage cuivre
Poids sans les connexions	12.29+(0.494*NoP) kg 27.09+(1.089*NoP) lb

Les dimensions standard

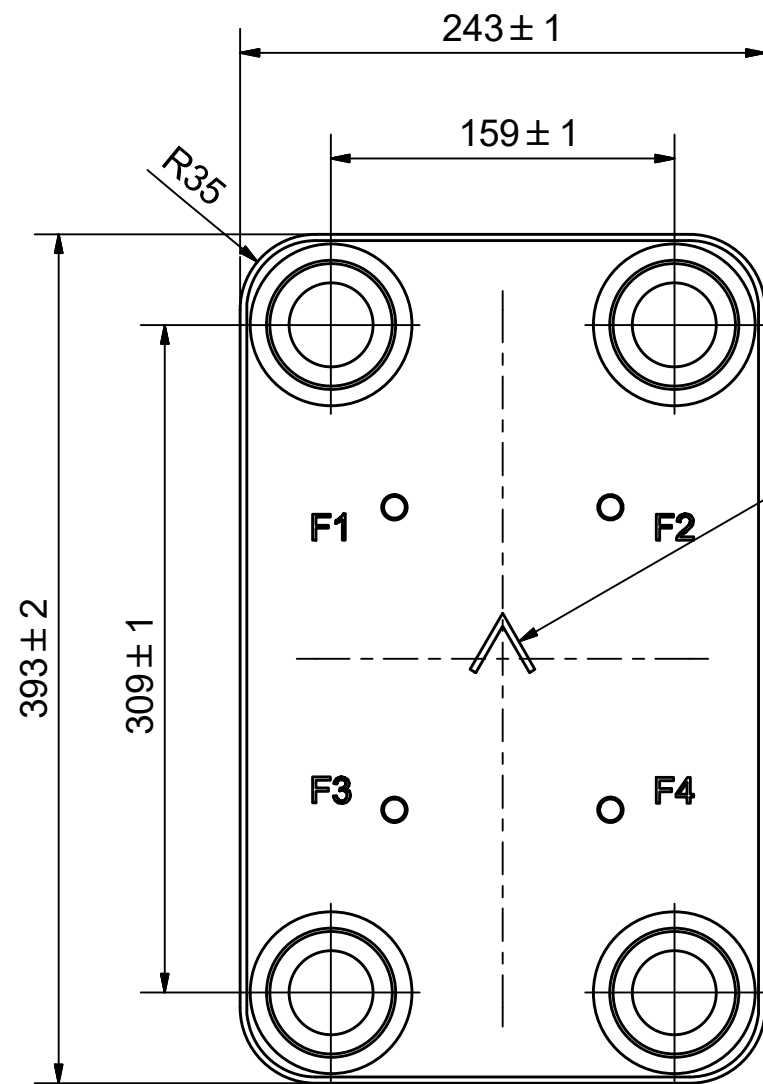


#	MM	IN
A	393	15.47
B	243	9.57
C	309	12.17
D	159	6.26
F	18,00+2,53*(NoP)	70.87+9.96*(NoP)
G	0	0
R	35	1.38
E_1	27	1.06

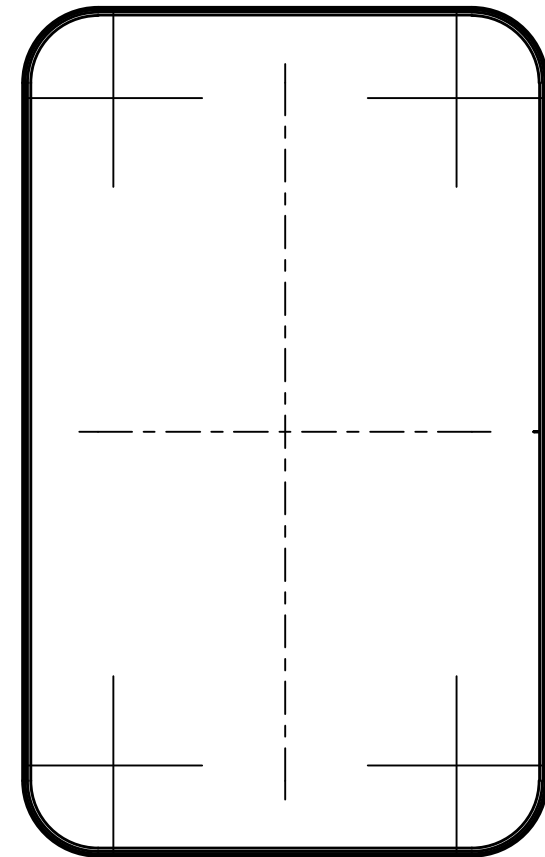
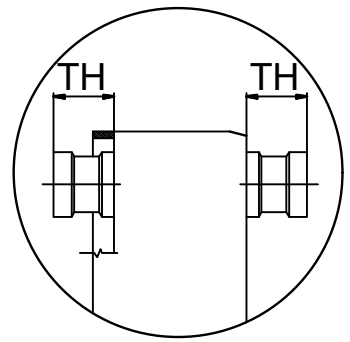
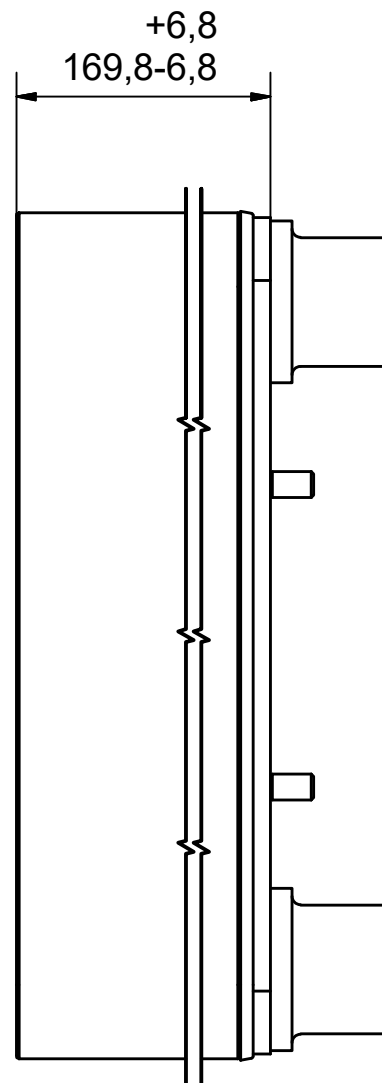
PED pression / température

**AXINTRA**

ÉCHANGEURS THERMIQUES



NOTE 1





AXINTRA
ÉCHANGEURS THERMIQUES

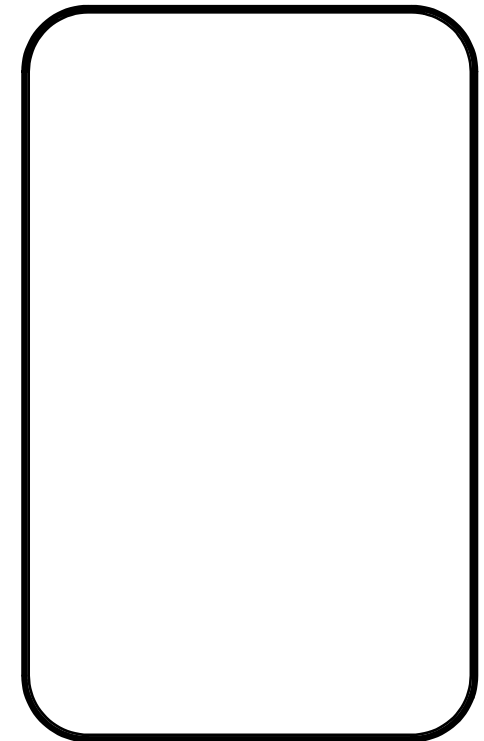
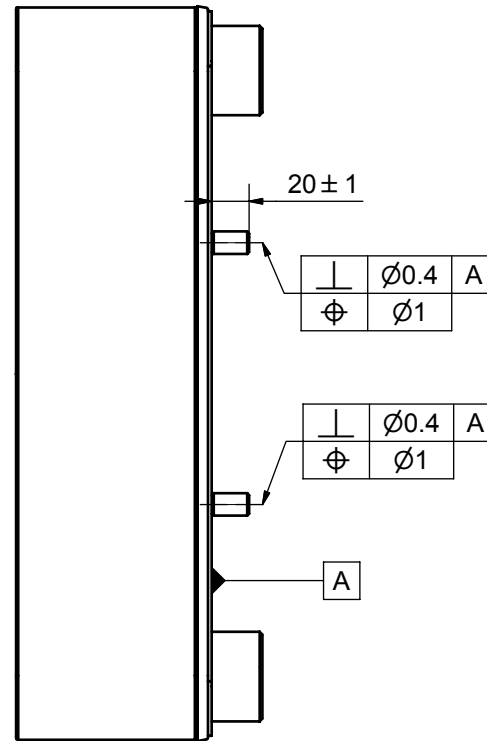
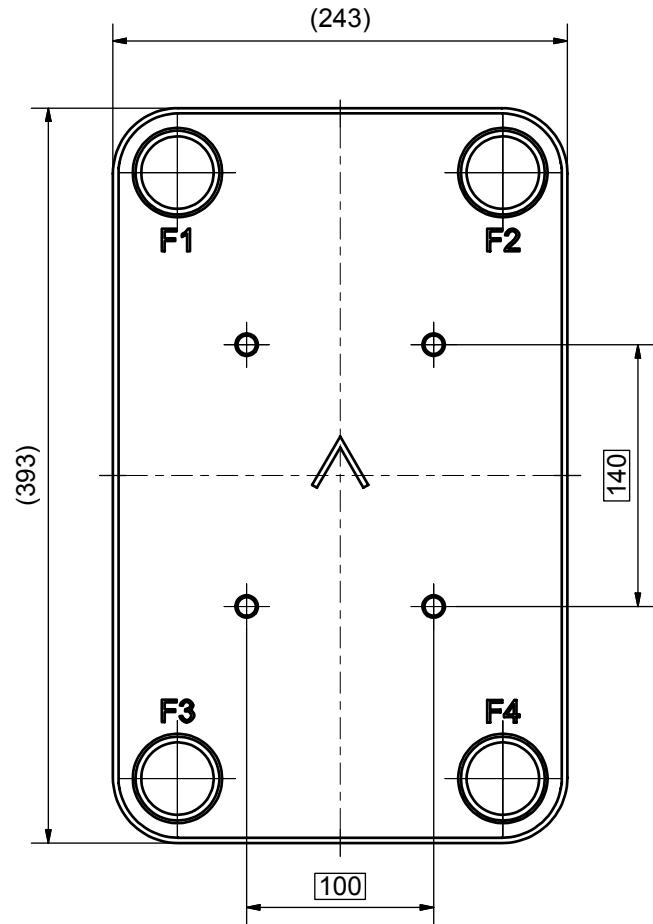
NOTE 1 ALTERNATE MARKING: STICKER OR STAMP

F4	45487	ISO-G 2 A, TH = 54,2	CD000019
F3	45487	ISO-G 2 A, TH = 54,2	CD000019
F2	45487	ISO-G 2 A, TH = 54,2	CD000019
F1	45487	ISO-G 2 A, TH = 54,2	CD000019
F	21112	B35 BOLT LOC F 4x C140x100	CG350001_1


Pos	Article No	Title / Denomination, code, material, dimension etc	Drawing No./ref	Pos	Article No	Title / Denomination, code, material, dimension etc	Drawing No./ref
-----	------------	---	-----------------	-----	------------	---	-----------------

Title BDW35TDWM4x60/1P-SC-H 4x2"			
 A DOVER COMPANY	Created Date 2024-01-29	Created By AU	
	Article/Configuration number 03215599.0	Drawing number AU00777621_03215599.0	

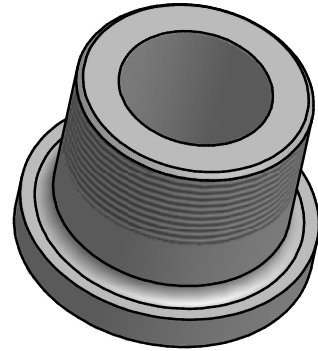
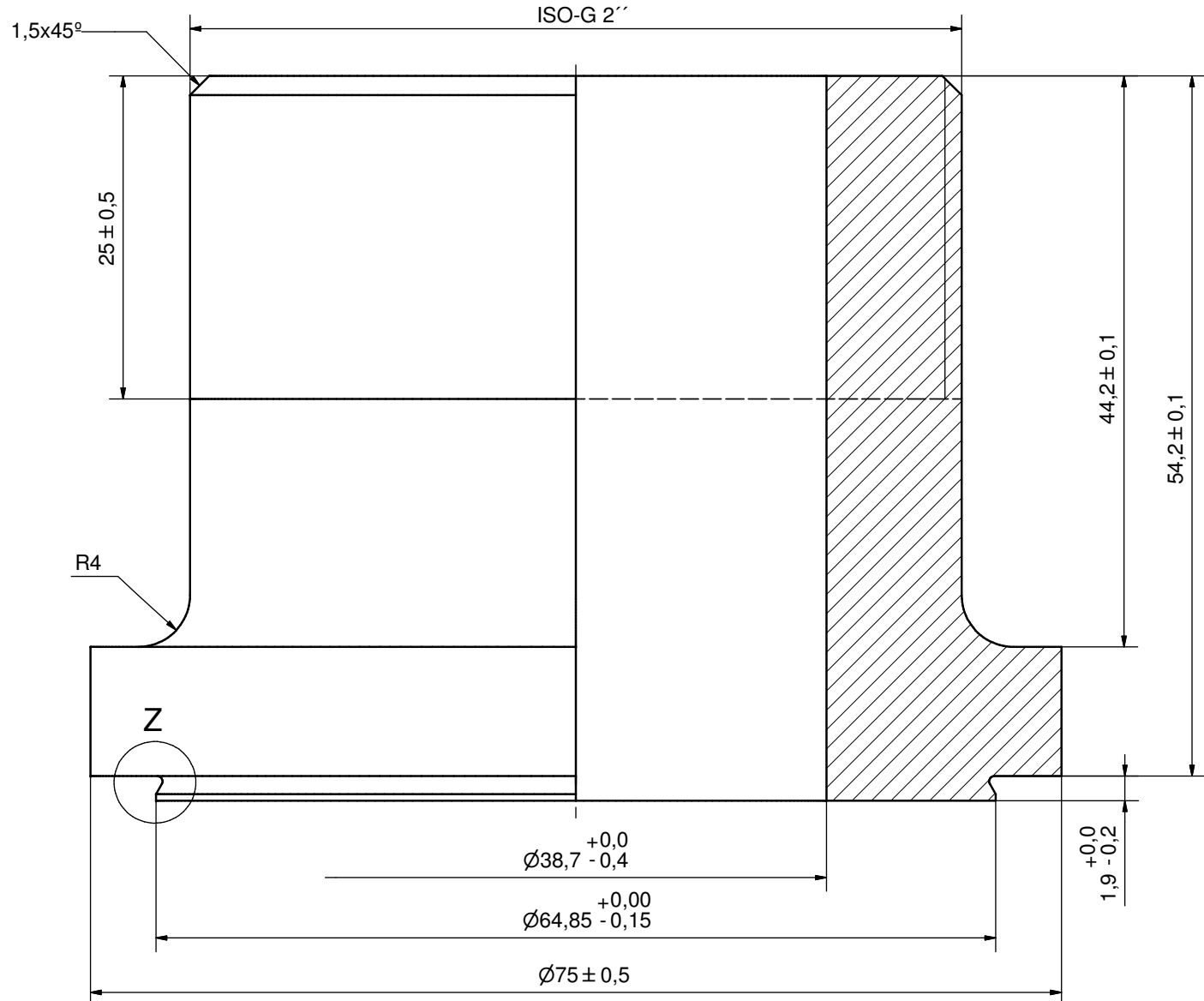
Rev No.	Alteration	Date	Checked	Approved
2	REDRAWN IN INVENTOR	2004/12/10	PDM	PDM



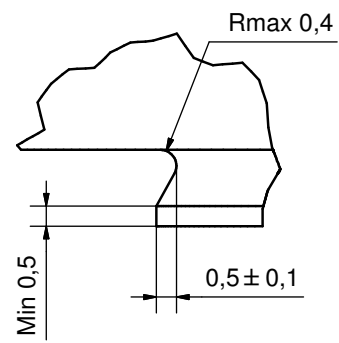
© Company Confidential, Property of SWEP International AB

1	4	STUD BOLT M12 x 20, ART. NO. 45095				M12 x 20
ITE	QTY	DESCRIPTION				Drawing No.
Drawn	Checked	Approved	Created Date	General geometrical tolerancing ISO 2768	General surface finish R_a	Scale
JA	PDM	PDM	2004/10/12	m	3.2	1:1
						Title
						B35 BOLT LOC F 4x C140x100
		Article number	Drawing number	Revision	Sheet	
		21112	CG350001	2	1 (1)	

Rev No.	Alteration	Date	Checked	Approved
8	ADDED DEBURR AND MATERIAL INFO	2009/07/28	RJ	PDM





Z (8 : 1)



DEBURR SHARP EDGES; 0.4MAX

ACCORDING TO MQS
MATERIAL

Drawn	Checked	Approved	Created Date	General geometrical tolerancing ISO 2768	General surface finish R _a	Scale
TM	TP	VP	1993-05-28	m	3.2	-
				Title		
				ISO-G 2"		
Article number		Drawing number		Revision	Sheet	
-		CD000019		8	1 (1)	