

DVD300

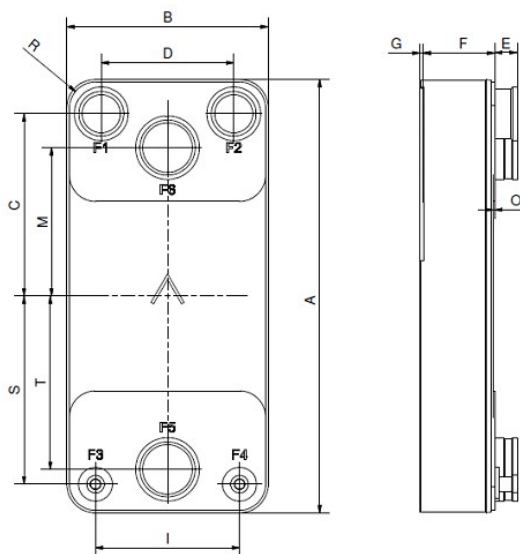
Équipé de notre technologie brevetée AsyMatrix®, le DV300 est un évaporateur asymétrique qui combine de hautes performances avec de faibles pertes de charge. Le DV300 est un évaporateur True Dual polyvalent extrêmement efficace. Il est le choix parfait pour les applications de chillers et de pompes à chaleur. Il a l'extrême avantage de fournir une performance maximale à pleine charge comme à demi-charge.



Spécifications de base

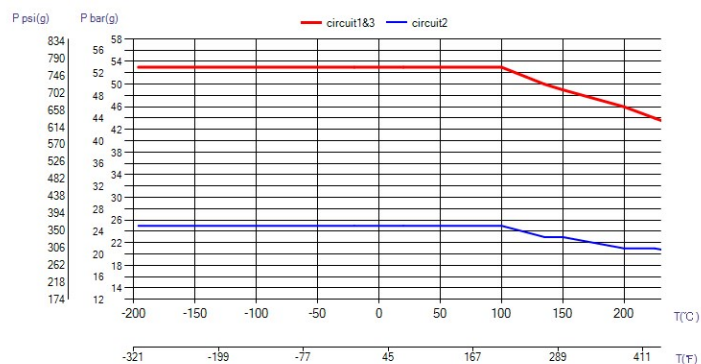
Nombre de plaques max. (NoP)	346
Débit volumétrique max.	60 m³/h (264.17 gpm)
Volume du canal	0.175/0.207 dm³ (0.0062/0.0073 ft³)
Matières	Plaques en acier inoxydable 316/316L, brasage cuivre
Poids sans les connexions	7.75+(0.348*NoP) kg 17.08+(0.767*NoP) lb

Les dimensions standard

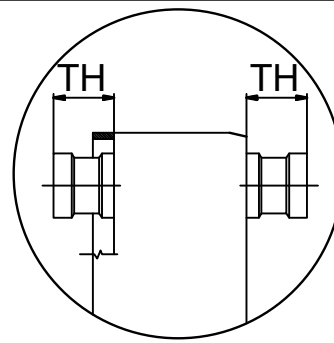
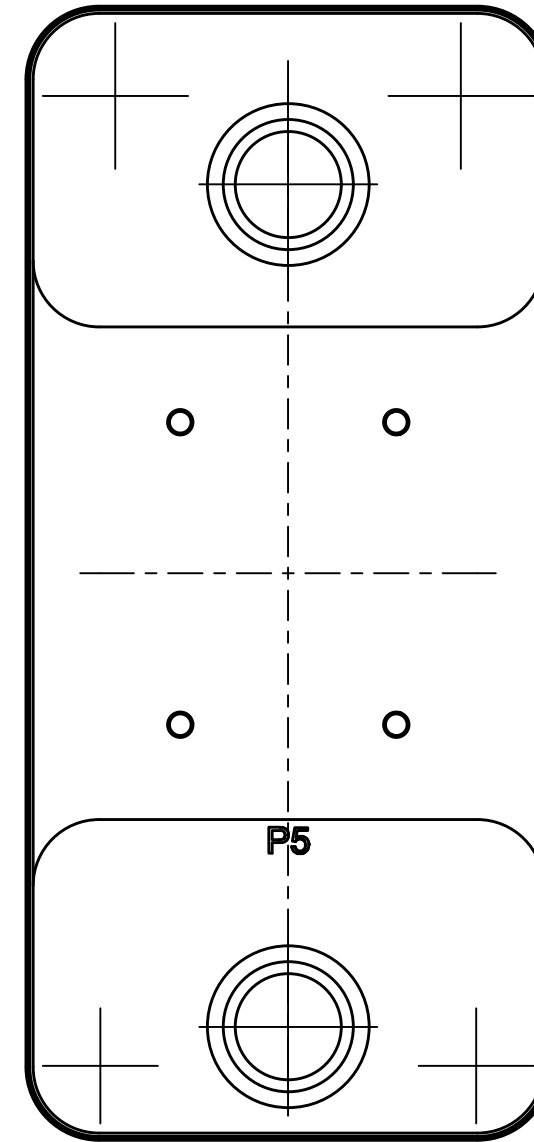
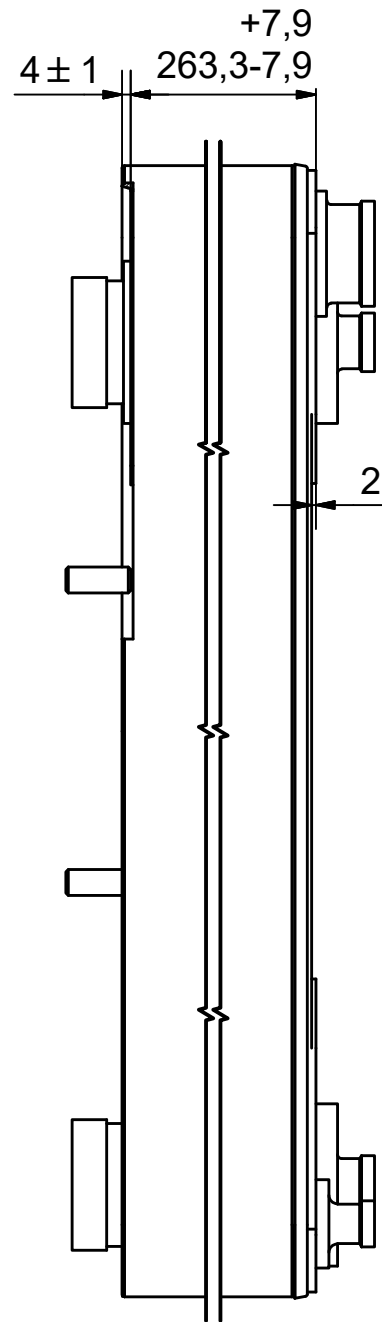
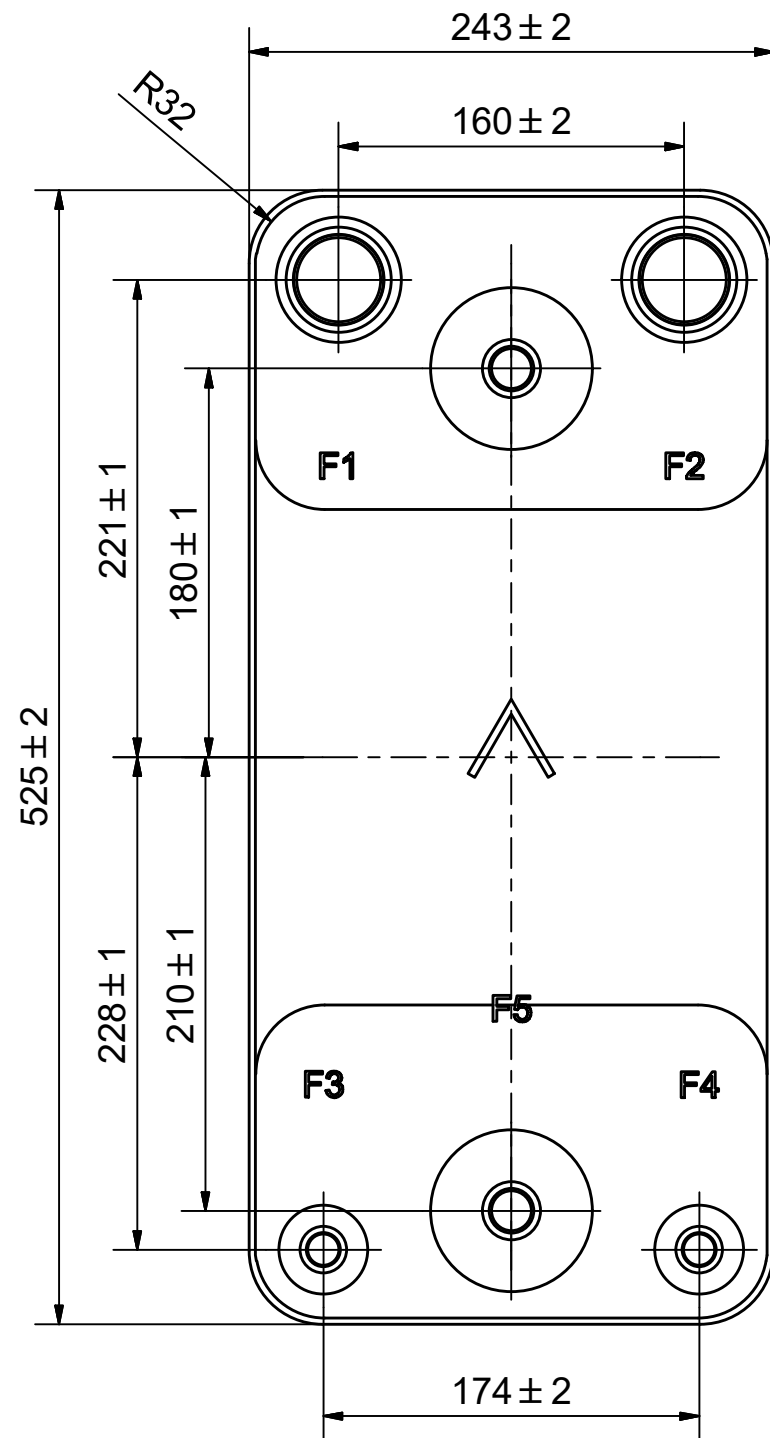


#	MM	IN
A	525	20.67
B	243	9.57
C	221	8.7
D	160	6.3
F	10,00+1,89*(NoP)	39.37+7.44*(NoP)
G	4	0.16
I	174	6.85
M	180	7.09
O	2	0.08
R	32	1.26
S	228	8.98
T	210	8.27
E_1	27	1.06

PED pression / température




© Company Confidential, Property of SWEP International AB

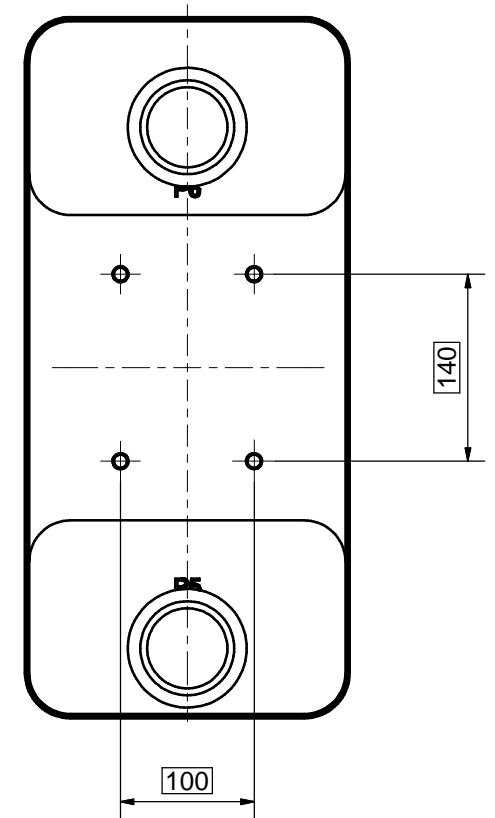
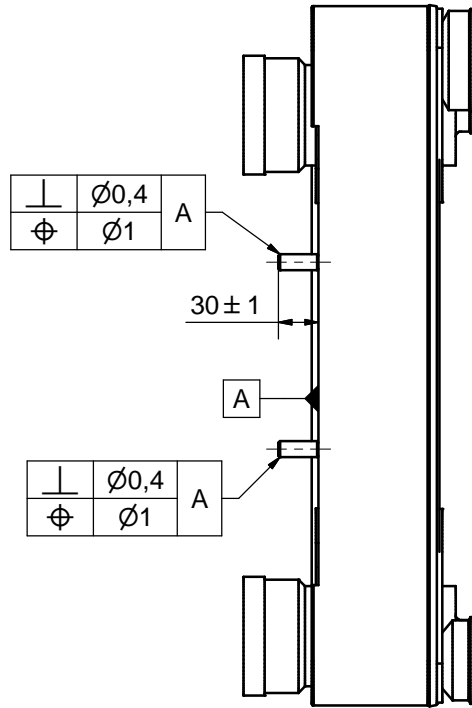
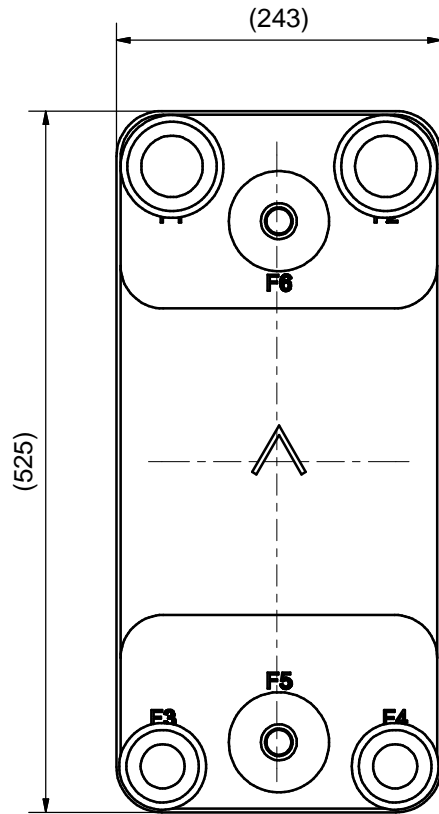



AXINTRA
ÉCHANGEURS THERMIQUES

NOTE 1 ALTERNATE MARKING: STICKER OR STAMP

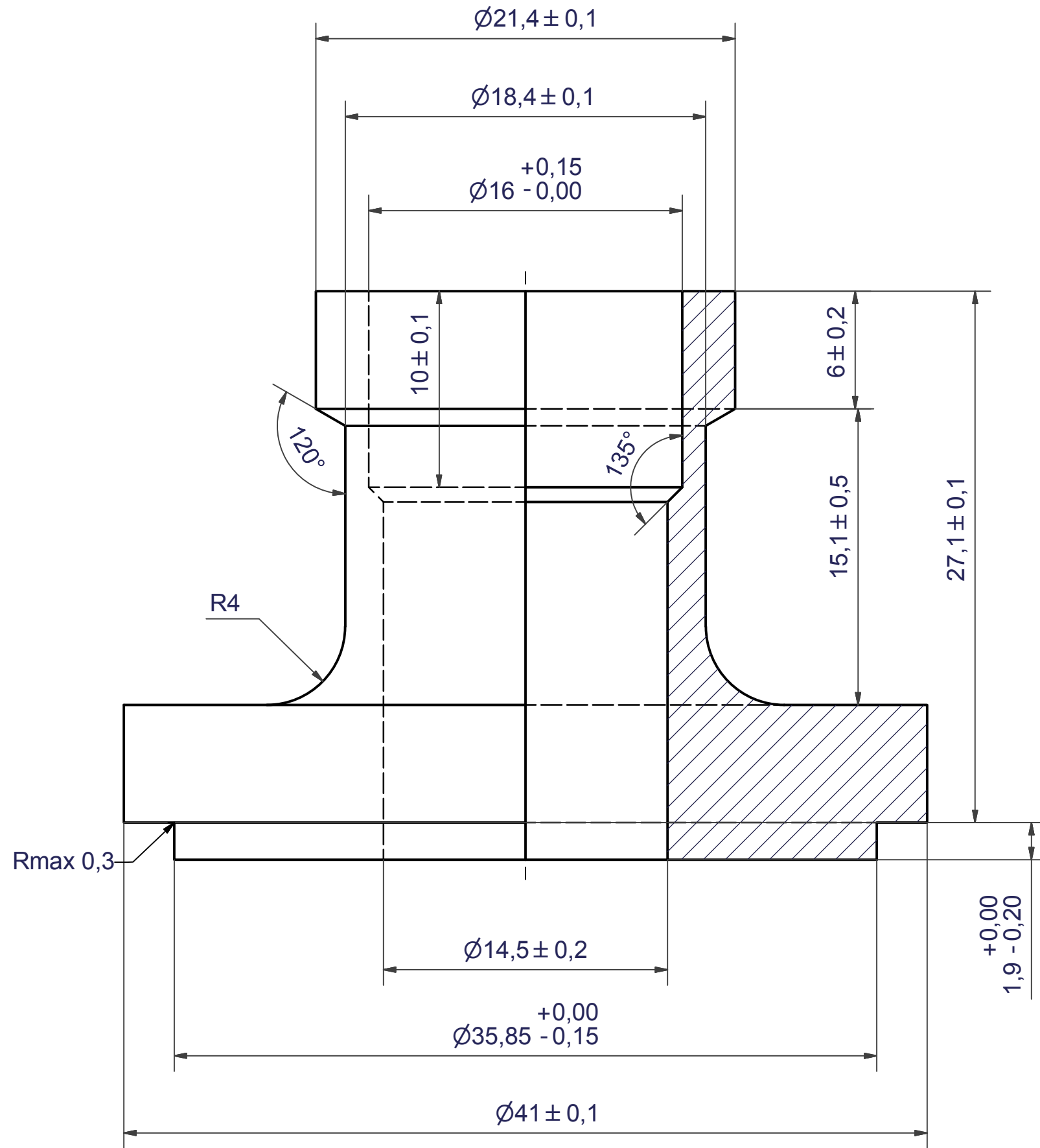
F6	33557	ISO-G 1/2 (INT), TH = 27,1	CD001082				
F5	33557	ISO-G 1/2 (INT), TH = 27,1	CD001082				
F4	45612	SOLDER ø16, TH = 27,1	CD000198				
F3	45612	SOLDER ø16, TH = 27,1	CD000198	P6	36238	VICTAULIC 2", TH = 27,1	CD001448
F2	33286	SOLDER 42U, TH = 27,1	CD001033	P5	36238	VICTAULIC 2", TH = 27,1	CD001448
F1	33286	SOLDER 42U, TH = 27,1	CD001033	P	21661	D300 STUD BOLT P 4XC140x100	CG300005
Pos	Article No	Title / Denomination, code, material, dimension etc	Drawing No./ref	Pos	Article No	Title / Denomination, code, material, dimension etc	Drawing No./ref

Title		DVD300Hx134/1P-SC-M 16+2x42U+16+2x1/2"INT / 2x2"VIC	
 A DOVER COMPANY		Created Date	2024-01-23
		Created By	AU
Article/Configuration number		03432420.0	
Drawing number		AU00776768_03432420.0	



1	4	STUD BOLT M12x30 ART.NO. 45522					M12x30
IT	QTY	TITLE					Drawing No.
Drawn	Checked	Approved	Created Date	General geometrical tolerancing ISO 2768:	General surface finish R _a	Scale	
JT	PDM	PDM	2009-01-19	m	3.2	-	
		Title D300 STUD BOLT P 4XC140x100					
Article number 21661		Drawing number CG300005		Revision -		Sheet 1 (1)	

Rev No.	Alteration	Date	Checked	Approved
5	REDRAWN IN INVENTOR	2004/07/14	TN	PDM

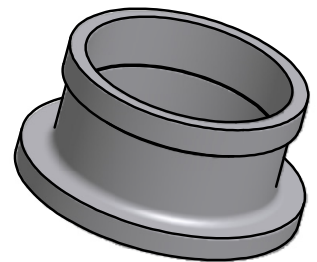
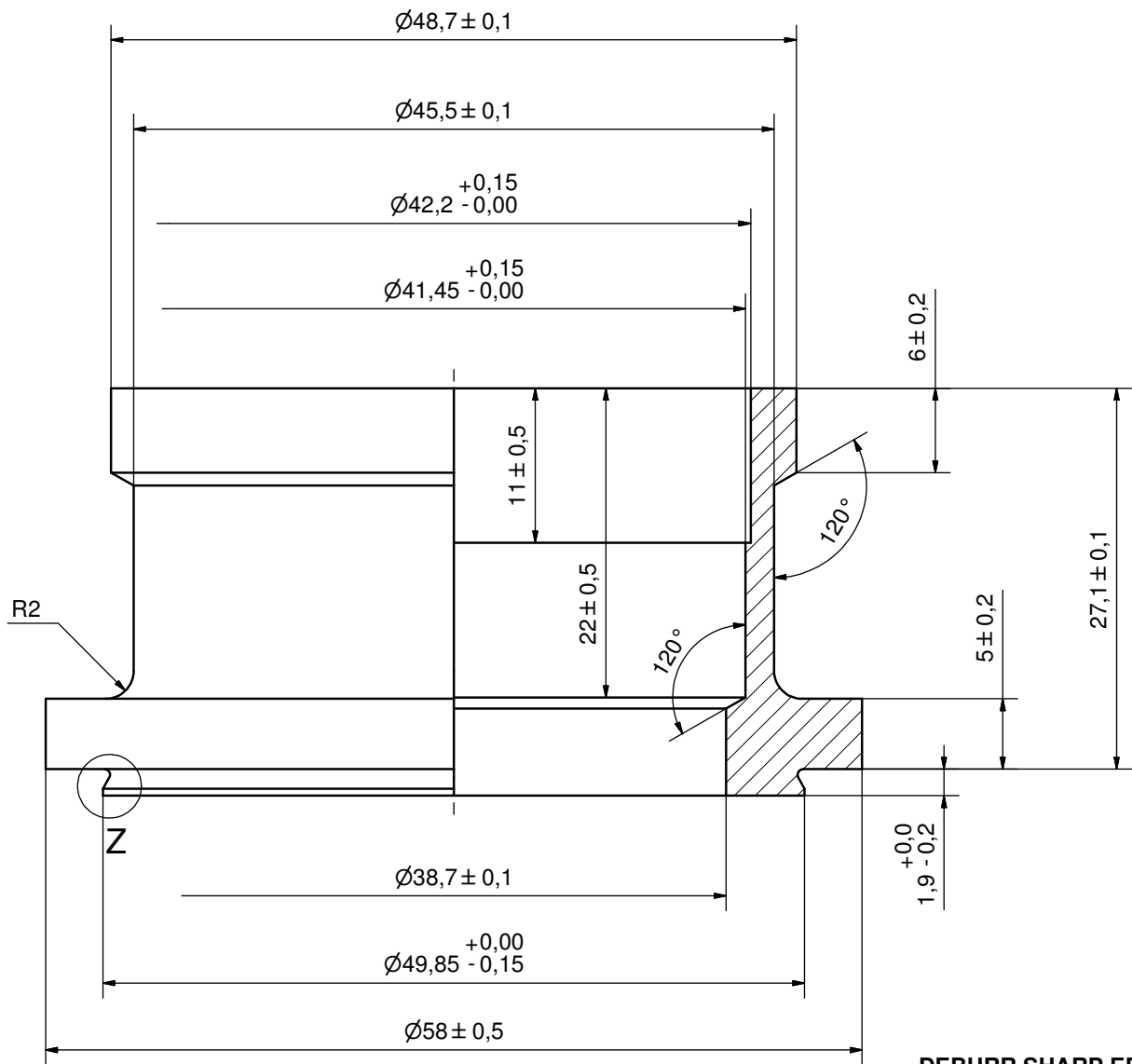


© Company Confidential, Property of SWEP International AB

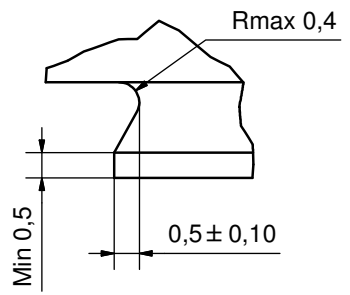
AXINTRA
ÉCHANGEURS THERMIQUES

Drawn <i>import</i>	Checked <i>HR</i>	Approved <i>BOS</i>	Created Date 1994-11-18	General geometrical tolerancing ISO 2768	General surface finish R_a		Scale -
			SOLDER $\varnothing 16$				
Article number		Drawing number CD000198		Revision 05		Sheet 1 (1)	

Rev No.	Alteration	Date	Checked	Approved
1	DEBURR INFO ADDED	2009/08/04	MA	PDM



Z (10 : 1)



DEBURR SHARP EDGES; MAX 0,4

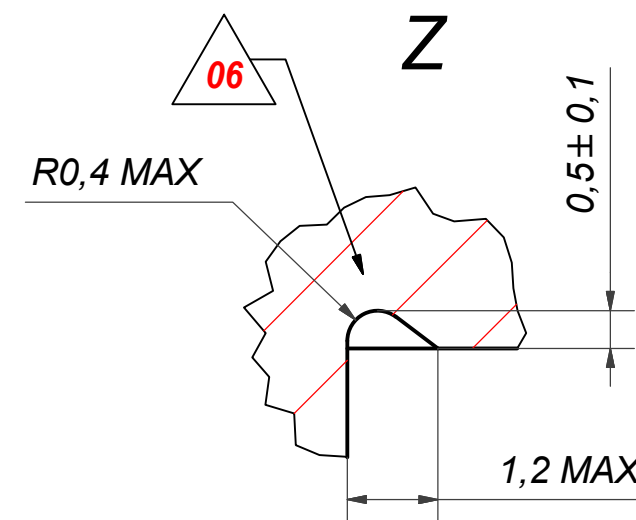
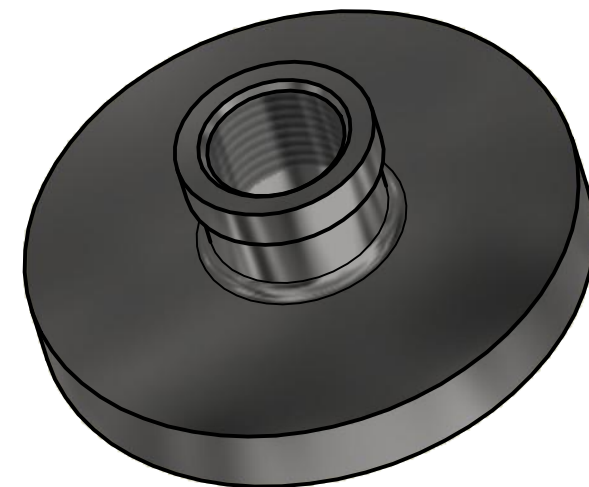
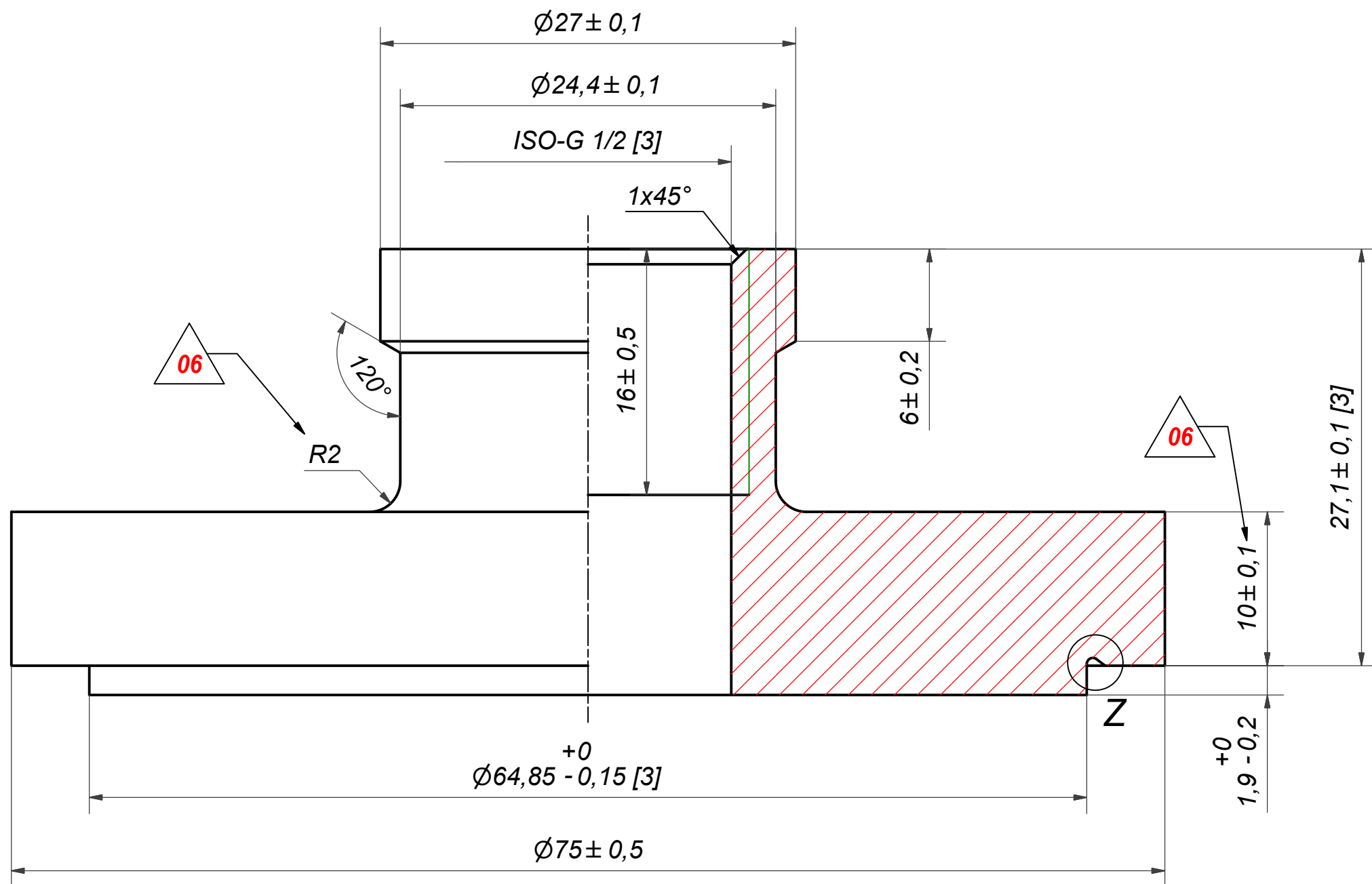
ACCORDING TO MQS
MATERIAL

© Company Confidential, Property of SWEP International AB



Drawn	Checked	Approved	Created Date	General geometrical tolerancing ISO 2768	General surface finish Ra	Scale
JT	PDM	PDM	2008-12-10	m	3.2	-
			Title			
			SOLDER 42U			
Article number		Drawing number		Revision	Sheet	
-		CD001033		1	1 (1)	

Rev No	Alteration	Date	Checked	Approved
06	ECN-000161: Groove; Tolerance updated, Ra=3.2 all srfcs, R2	2021-01-27	SKGL	PDM




NOTE 2: [3] - CRITICAL/SPECIAL CHARACTERISTIC TO BE FOLLOWED

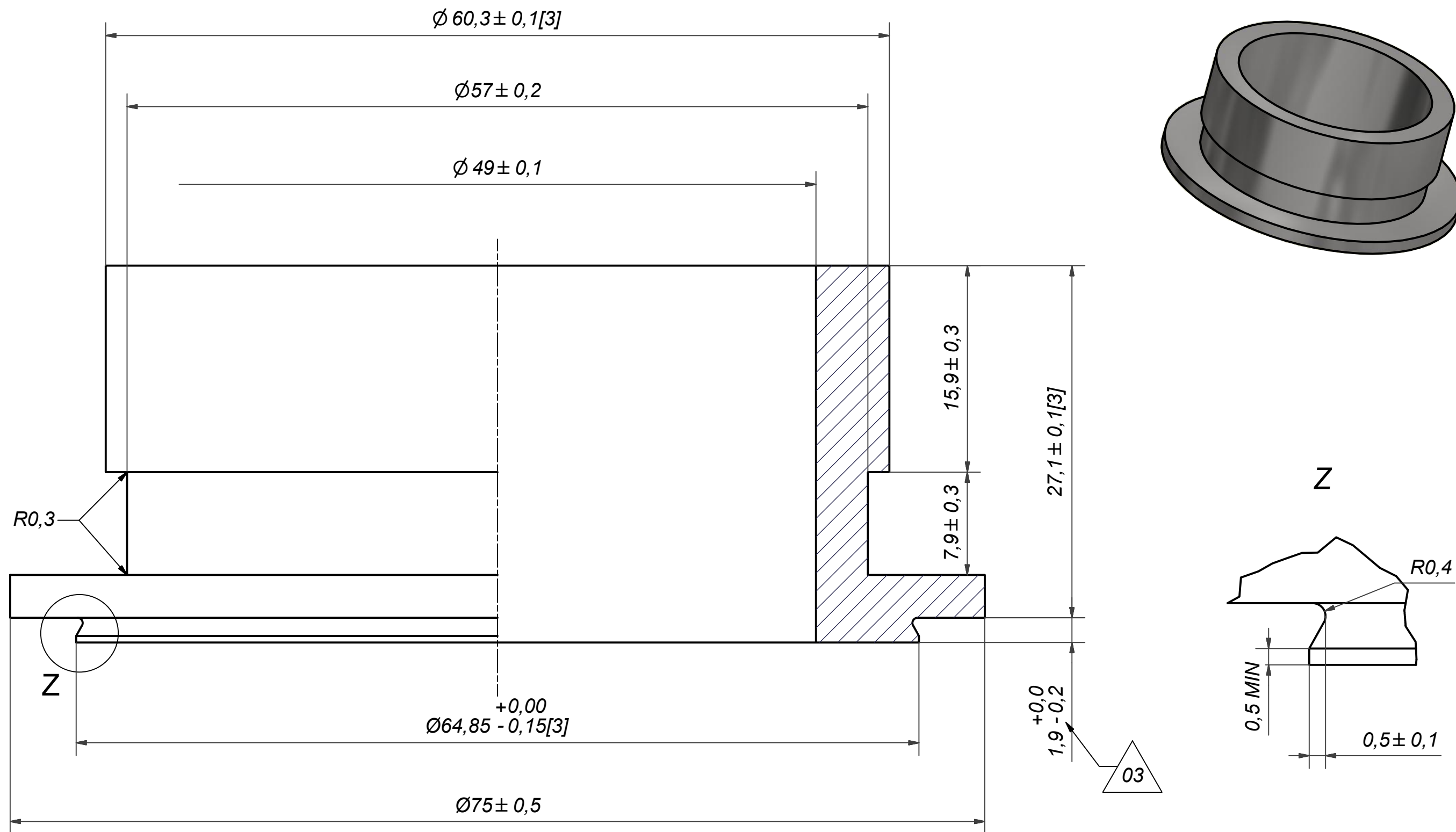
NOTE 1: DEBURR SHARP EDGES; MAX 0.4

ACCORDING TO MQS

MATERIAL


Drawn	Checked	Approved	Created Date	General geometrical tolerancing ISO 2768:	General surface finish R_a :	Scale	Paper size
miguser	PDM	PDM	2008-12-12	m	3.2	-	A3
 A DOVER COMPANY			Title				
			ISO-G 1/2 (INT)				
Article number			Design Type	Drawing number	Revision	Sheet	
			CD	CD001082	06	1 (1)	

Rev No	Alteration	Date	Checked	Approved
03	DESIGN CHANGE ACCORDING TO DOC.RD101651	9/4/2019	CNVG	PDM



NOTE2:[3] - CRITICAL/SPECIAL CHARACTERISTIC TO BE FOLLOWED
 NOTE1:DEBURR SHARP EDGES; MAX 0,4

ACCORDING TO MQS
 MATERIAL

Drawn	Checked	Approved	Created Date	General geometrical tolerancing ISO 2768:	General surface finish R_a :	Scale	Paper size
inap	PDM	PDM	5/16/2011	m	3.2	-	A3
 A DOVER COMPANY			Title VICTAULIC 2"				
			Article number	Design Type	Drawing number	Revision	Sheet
-	CD	CD001448	03	1 (1)			