

FEUILLE DE PRODUIT

# F120T

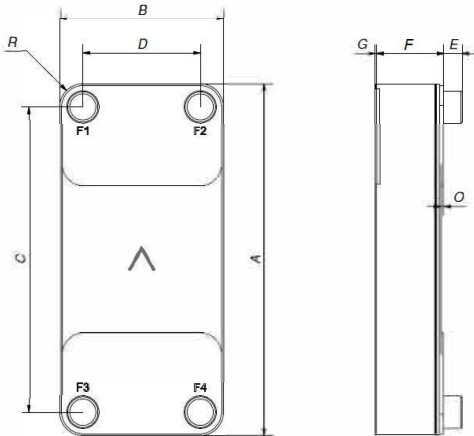
Le F120T est un évaporateur optimisé pour fournir de hautes performances. Il combine un format compact et un agencement de plaques spécialement développé pour créer un échangeur thermique extrêmement efficace. Le F120T est le choix idéal pour les chillers, les pompes à chaleur et les économiseurs.



## Spécifications de base

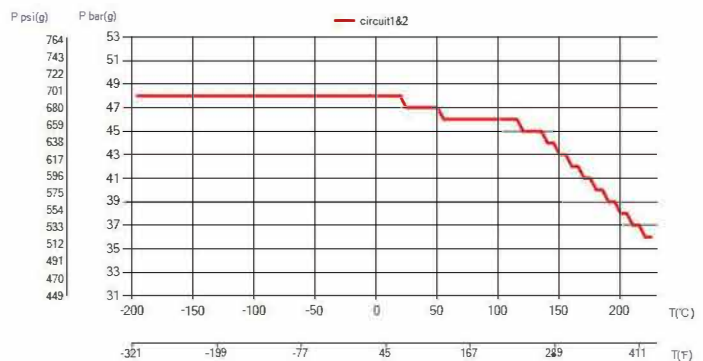
Nombre de plaques max. (NoP)	250
Débit volumétrique max.	27,4 m³/h (17.61 gpm)
Volume du canal	0.241/0.241 dm³ (0.0085/0.0085 ft³)
Matières	Plaques en acier inoxydable 304, brasage cuivre
Poids sans les connexions	8.33+(0.424*NoP) kg 18.36+(0.935*NoP) lb
Taille la taille des Particules (mm)	1

## Les dimensions standard

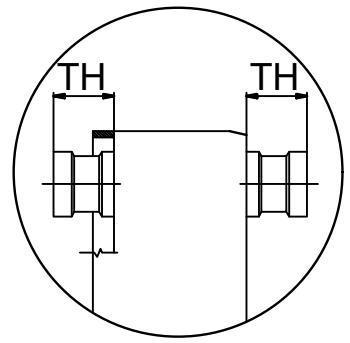
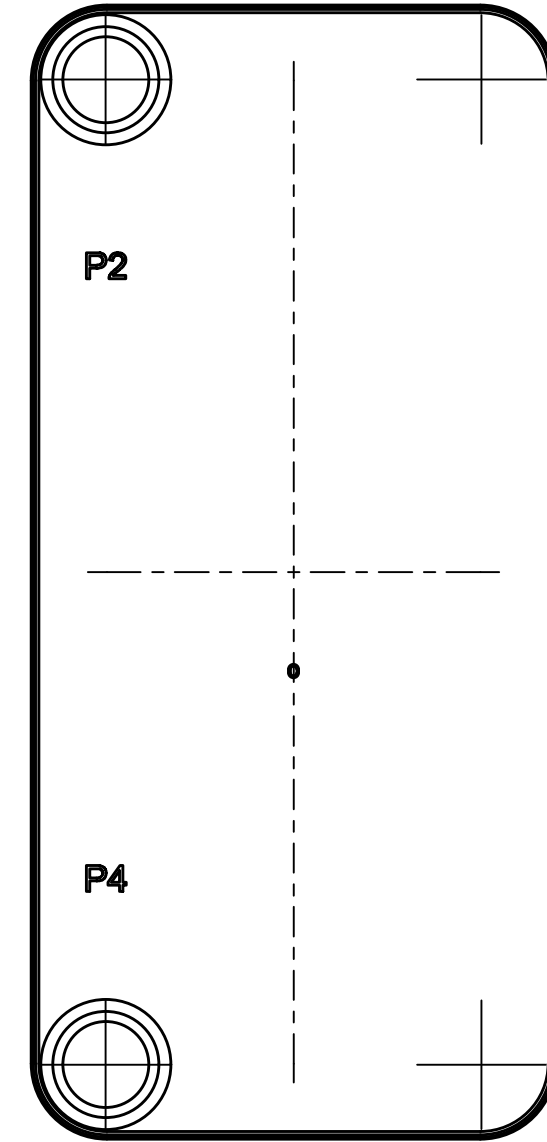
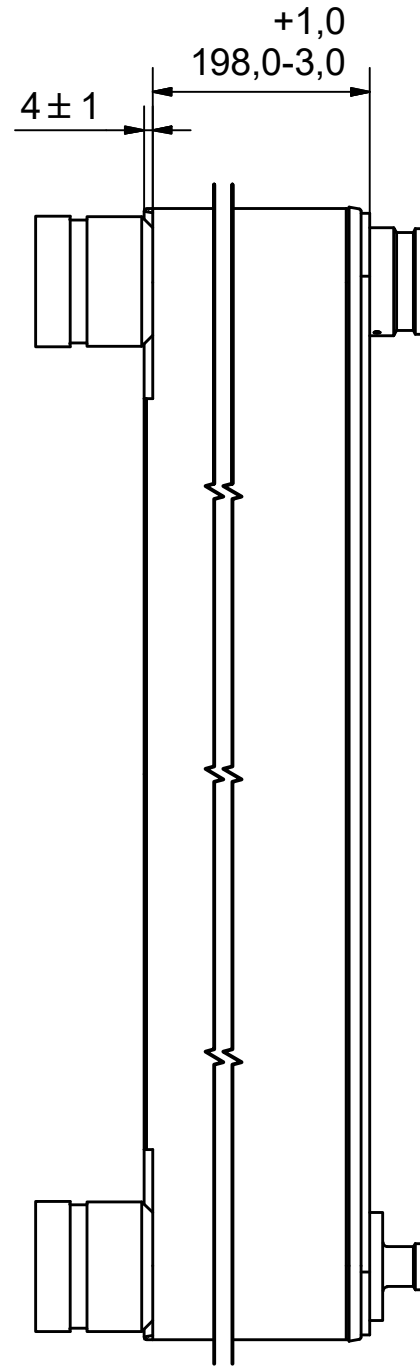
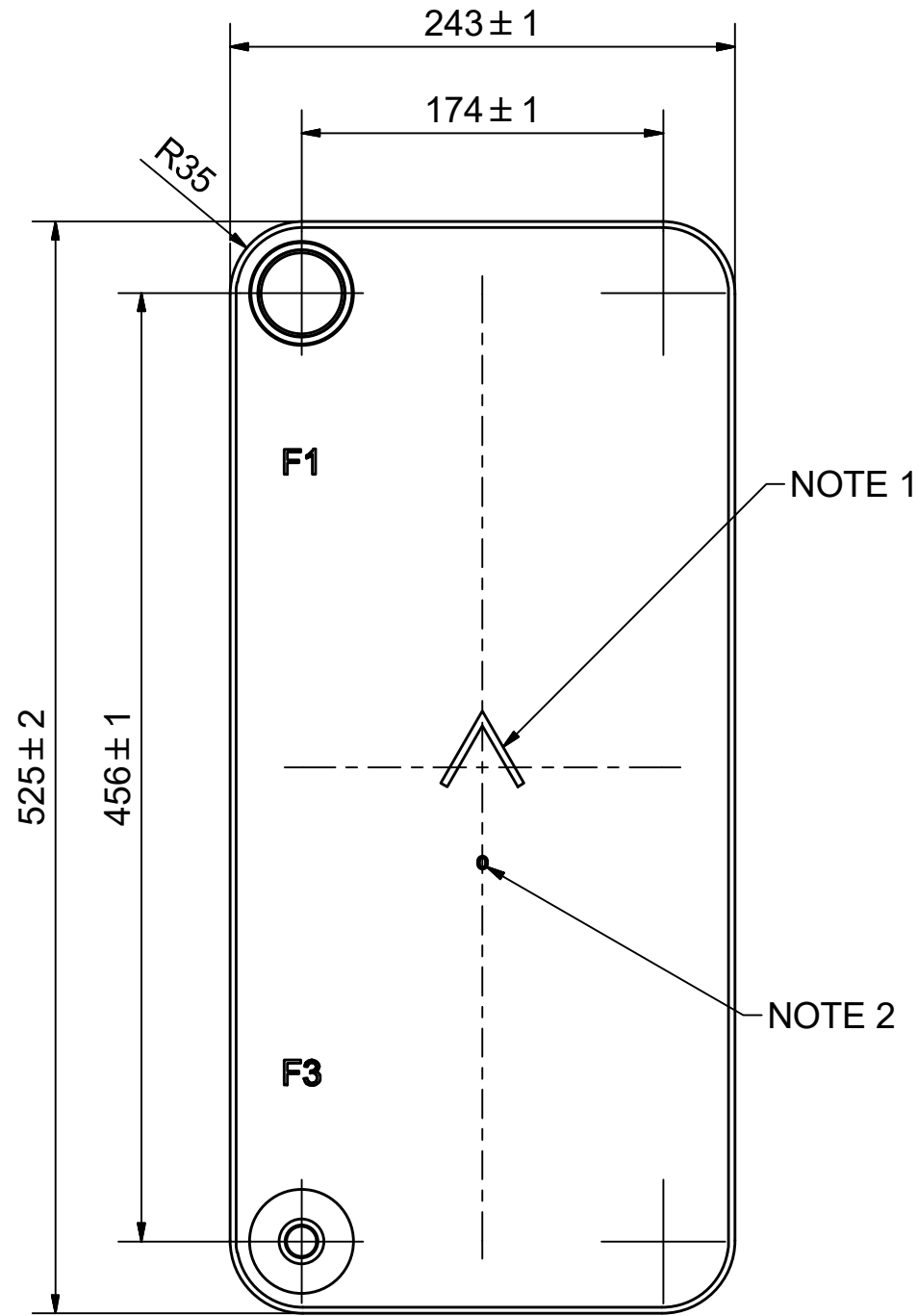


#	MM	IN
A	525	20.67
B	243	9.57
C	456	17.95
D	174	6.85
F	10,00+2,29*(NoP)	0.39+0.09*(NoP)
G	4	0.16
R	35	1.38
E_1	27	1.06
E_2	54	2.13

## PED pression / température





ÉCHANGEURS THERMIQUES



NOTE 1 ALTERNATE MARKING: STICKER OR STAMP

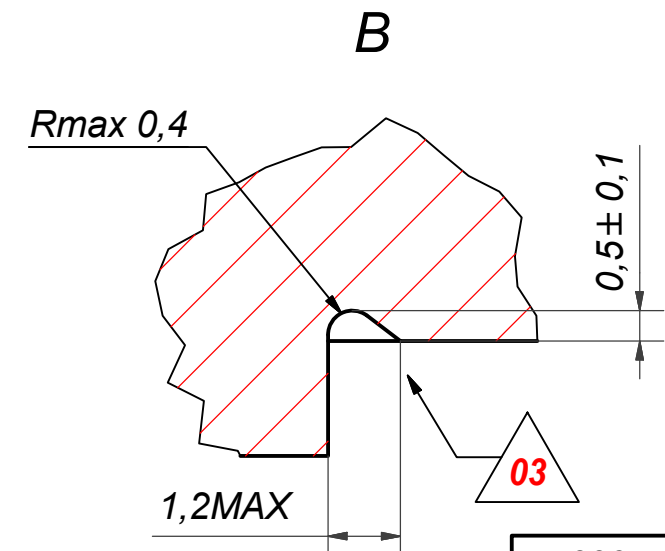
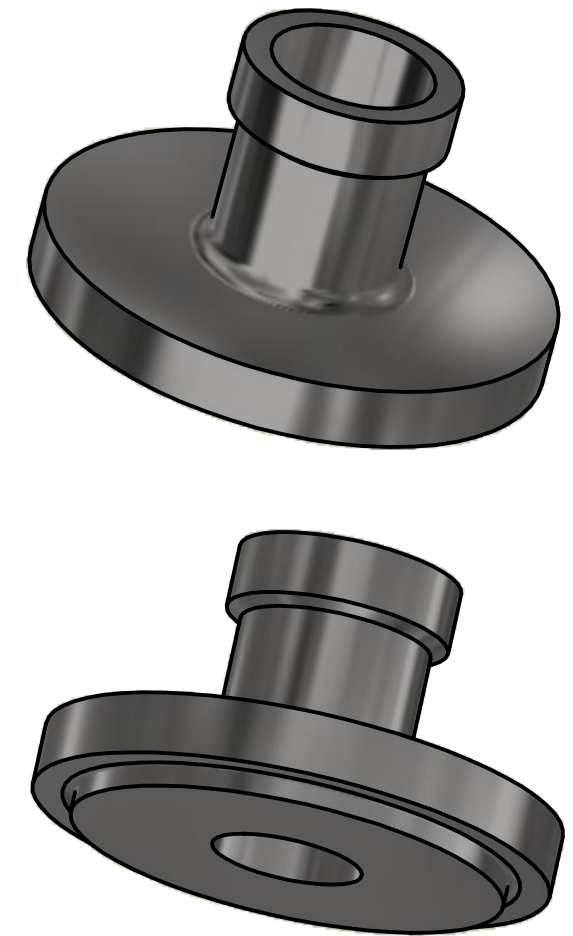
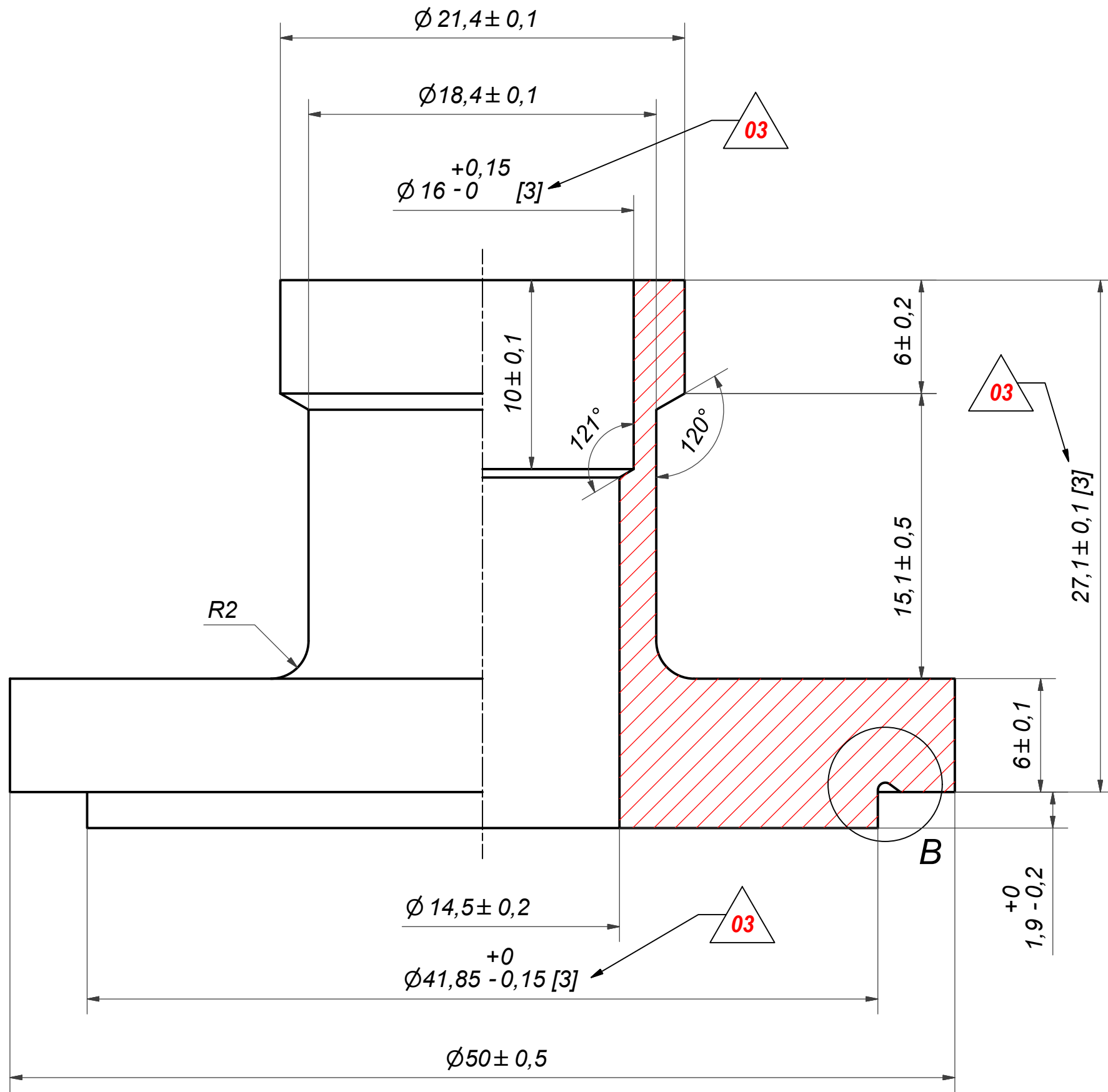
NOTE 2 MARKING TEXT "0" FOR IDENTIFICATION ONLY  
0= AISI 304

**AXINTRA**  
ÉCHANGEURS THERMIQUES

Title		F120TH/1P-NC-M	
 A DOVER COMPANY	Created Date	Created By	
	2024-01-25	AU	
	Article/Configuration number	Drawing number	
	16652-82	AU00777226_16652-82	

Pos	Article No	Title / Denomination, code, material, dimension etc	Drawing No./ref	Pos	Article No	Title / Denomination, code, material, dimension etc	Drawing No./ref
F3	46905	SOLDER ø16, TH = 27,1	CD000416	P4	33402	VIC 2 SPEC, TH = 54,2	CD001051
F1	33334	SOLDER 42U, TH = 27,1	CD001043	P2	33402	VIC 2 SPEC, TH = 54,2	CD001051


Rev No	Alteration	Date	Checked	Approved
03	DESIGN CHANGE ACCORDING ECN-000362	2019-11-20	SKGL	PDM



© Company Confidential, Property of SWEP International AB

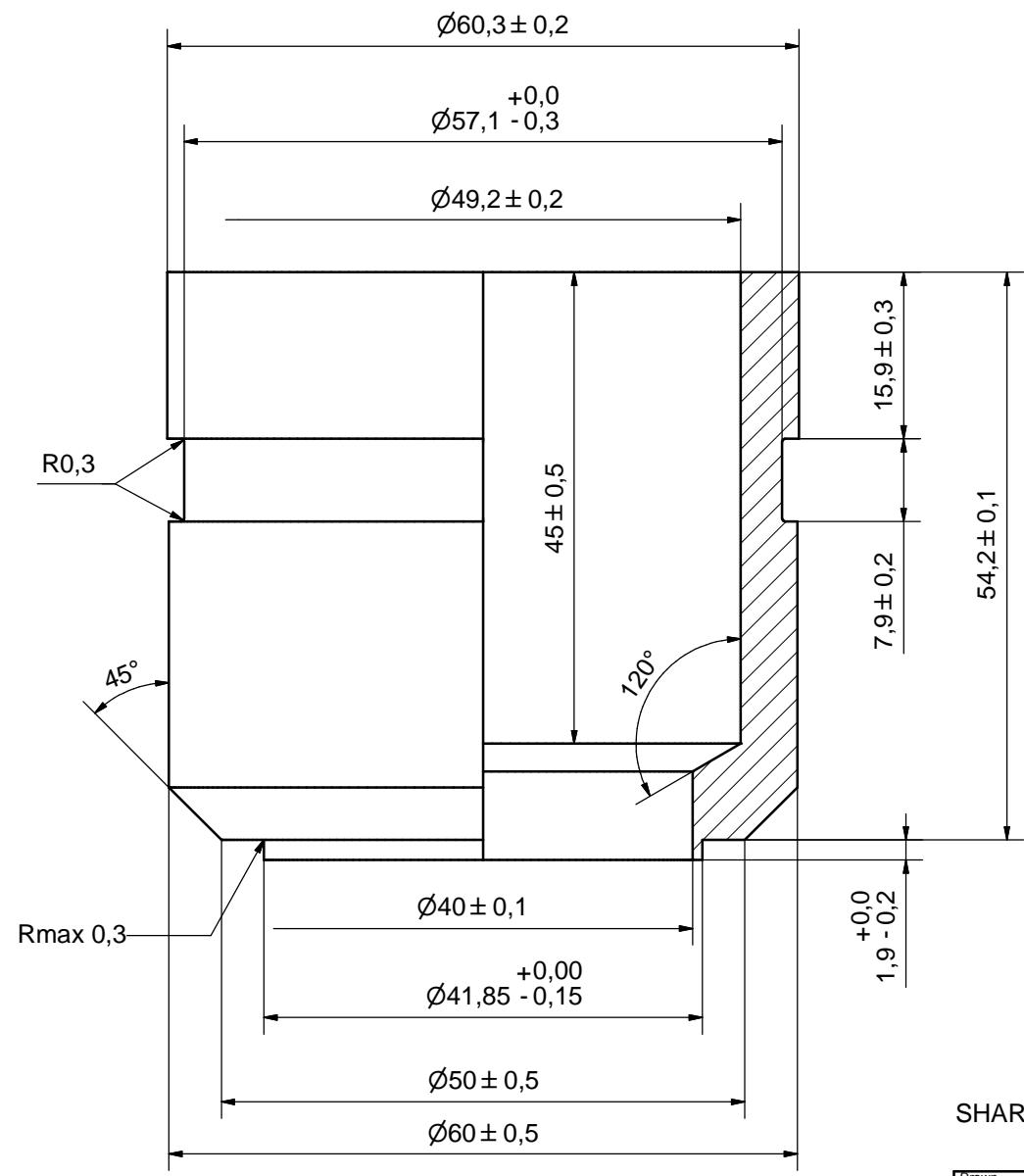
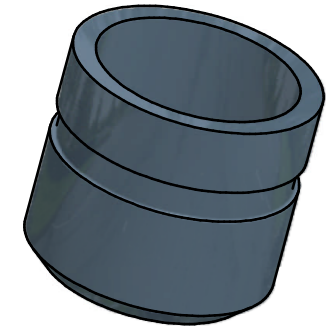
**AXINTRA**  
ÉCHANGEURS THERMIQUES

**NOTE 2: [3] - CRITICAL/SPECIAL CHARACTERISTIC TO BE FOLLOWED**  
**NOTE 1: DEBURR SHARP EDGES; MAX 0.4**

Drawn	Checked	Approved	Created Date	General geometrical tolerancing ISO 2768:	General surface finish $R_a$ :	Scale	Paper size
OA	PDM	PDM	1999-07-15	m	3.2	-	A3
 A DOVER COMPANY			<b>SOLDER Ø16</b>				
			Article number	Design Type	Drawing number	Revision	Sheet
	CD	CD000416	03	1 (1)			

ACCORDING TO MQS  
MATERIAL

Rev No.	Alteration	Date	Checked	Approved
1	DEBURRING INFO ADDED	2009/03/11	TL	PDM




SHARP EDGES DEBURRED MAX 0,4

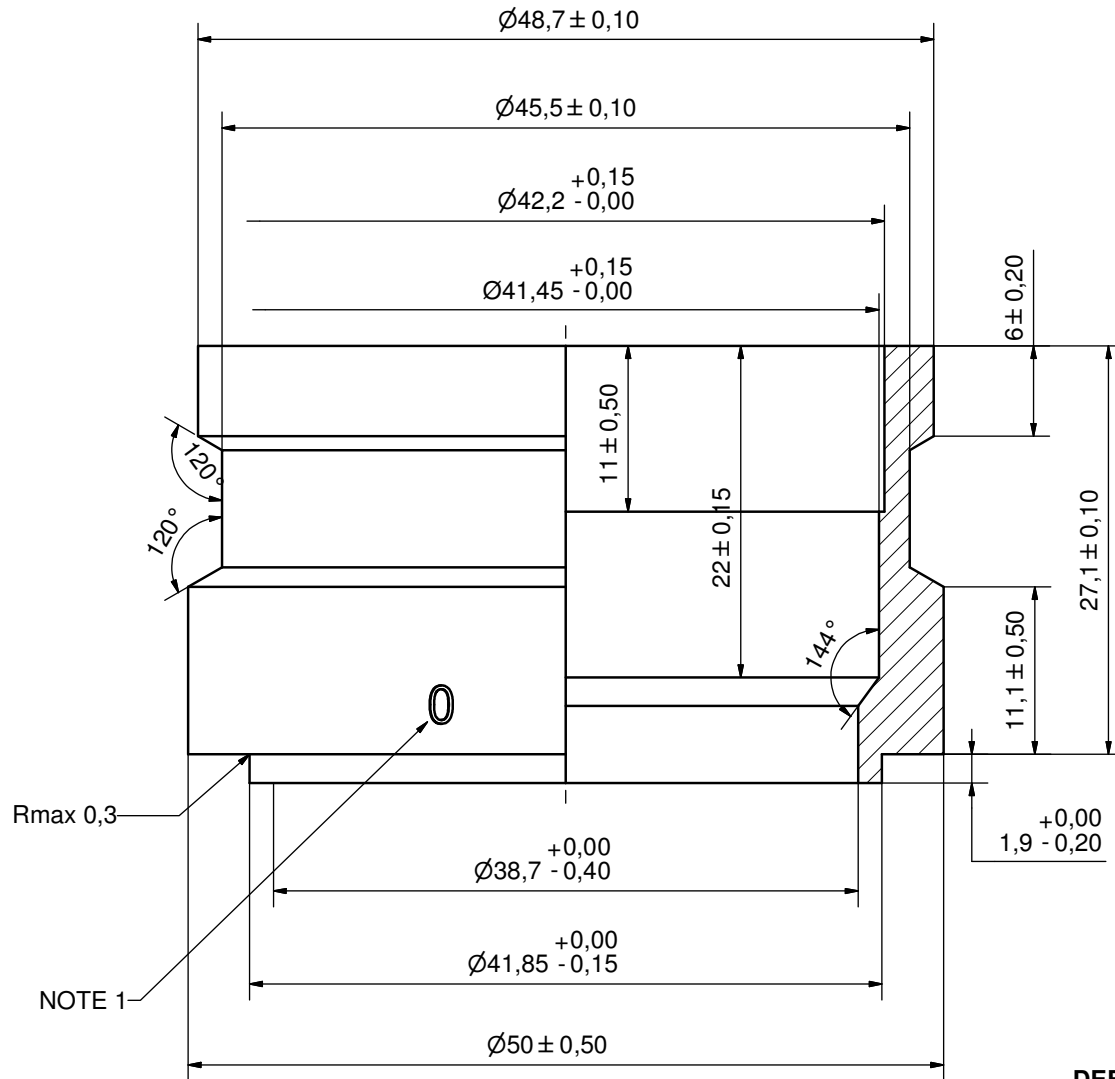
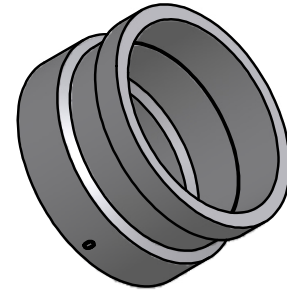
ACCORDING TO MQS  
MATERIAL

Drawn	Checked	Approved	Created Date	General geometrical tolerancing ISO 2768	General surface finish $R_a$	Scale
TPE	PDM	PDM	2008-10-29	m	3.2	-

				<b>VIC 2 SPEC</b>			
Article number		Drawing number		Revision		Sheet	
-		CD001051		1		1 (1)	

Rev No.	Alteration	Date	Checked	Approved
1	DEBURR INFO ADDED	2009/08/04	MA	PDM



NOTE 1: MARKING TEXT "0" FOR IDENTIFICATION ONLY  
PRESENT AT 2 PLACES 180° FROM EACH OTHER  
0 = 304 MATERIAL

**AXINTRA**  
ÉCHANGEURS THERMIQUES

DEBURR SHARP EDGES; MAX 0,4

ACCORDING TO MQS  
MATERIAL

Drawn RJ	Checked PDM	Approved PDM	Created Date 2008-09-10	General geometrical tolerancing ISO 2768 m	General surface finish Ra 3.2	Scale -
			Title <b>SOLDER 42U</b>			
Article number -		Drawing number CD001043		Revision 1	Sheet 1 (1)	