

## B220Hx100/1P-SC-S 4x2" (54)

Code : 19142-100 / 0272314.0  
avec support 28020

Fiche technique et plans

# B220

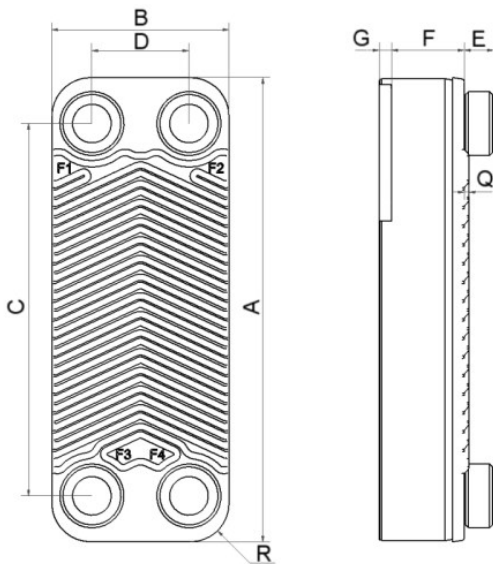
Le modèle B220 est un échangeur de chaleur à plaques brasées compact mais très efficace, offrant une excellente efficacité de transfert thermique à faible coût. L'une de ses principales applications est le chauffage haute efficacité de l'eau chaude sanitaire (ECS), mais on peut aussi l'utiliser dans d'autres applications à une phase telles que le refroidissement de l'huile, le chauffage domestique et les désurchauffeurs. Grâce à sa construction à deux types de plaques, on peut varier la longueur thermique pour obtenir un produit personnalisé aux performances optimales pour chaque application.



## Spécifications de base

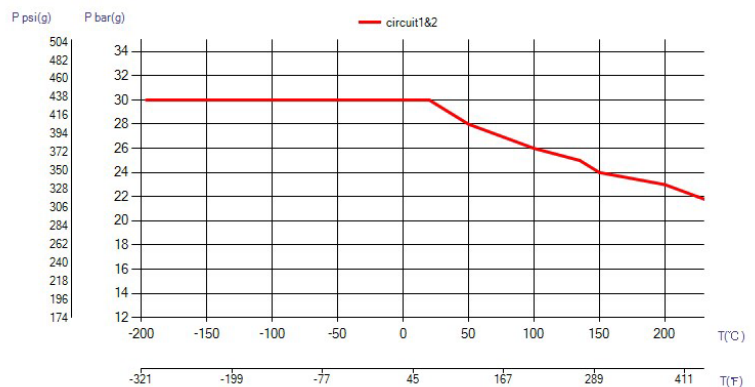
Nombre de plaques max. (NoP)	300
Débit volumétrique max.	39 m <sup>3</sup> /h (171.71 gpm)
Volume du canal	0.14/0.14 dm <sup>3</sup> (0.0049/0.0049 ft <sup>3</sup> )
Matières	Plaques en acier inoxydable 316/316L, brasage cuivre
Poids sans les connexions	5.30+(0.321*NoP) kg 11.68+(0.708*NoP) lb

## Les dimensions standard



#	MM	IN
A	524	20.63
B	202	7.95
C	442	17.4
D	120	4.72
F	6,00+1,73*(NoP)	23.62+6.81*(NoP)
G	4	0.16
R	41.60	1.64
E_1	54	2.13

## PED pression / température



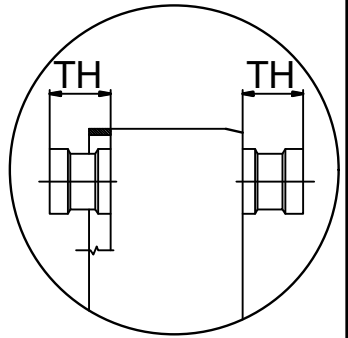
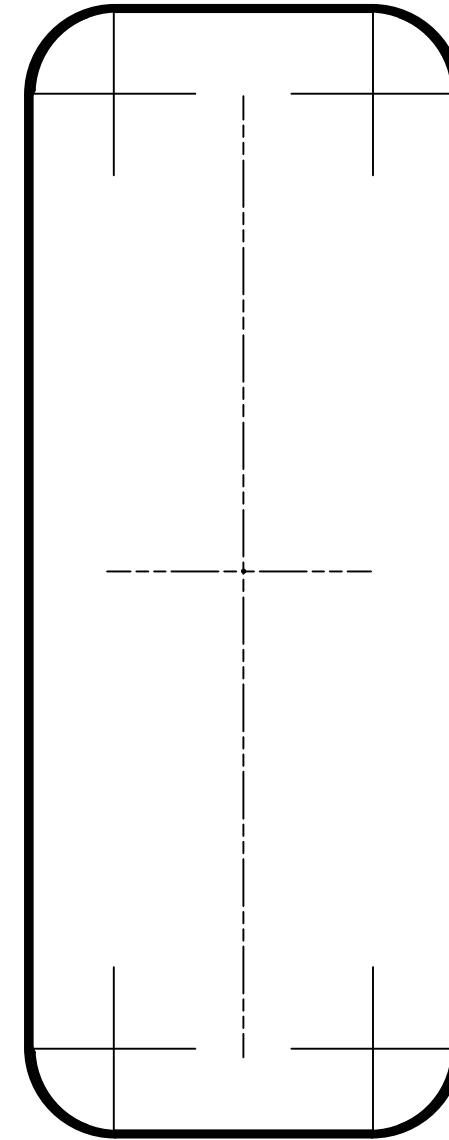
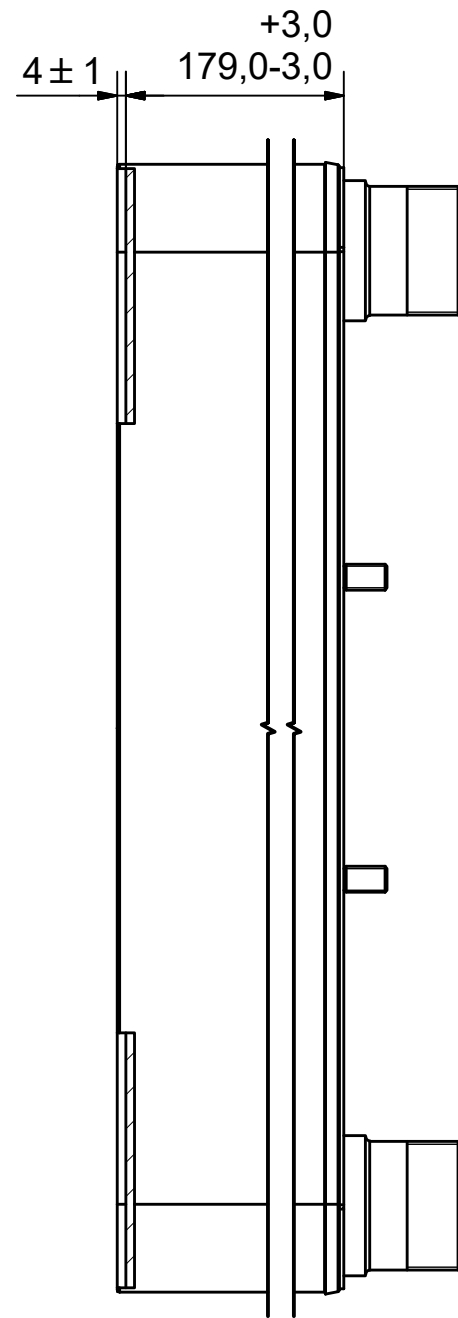
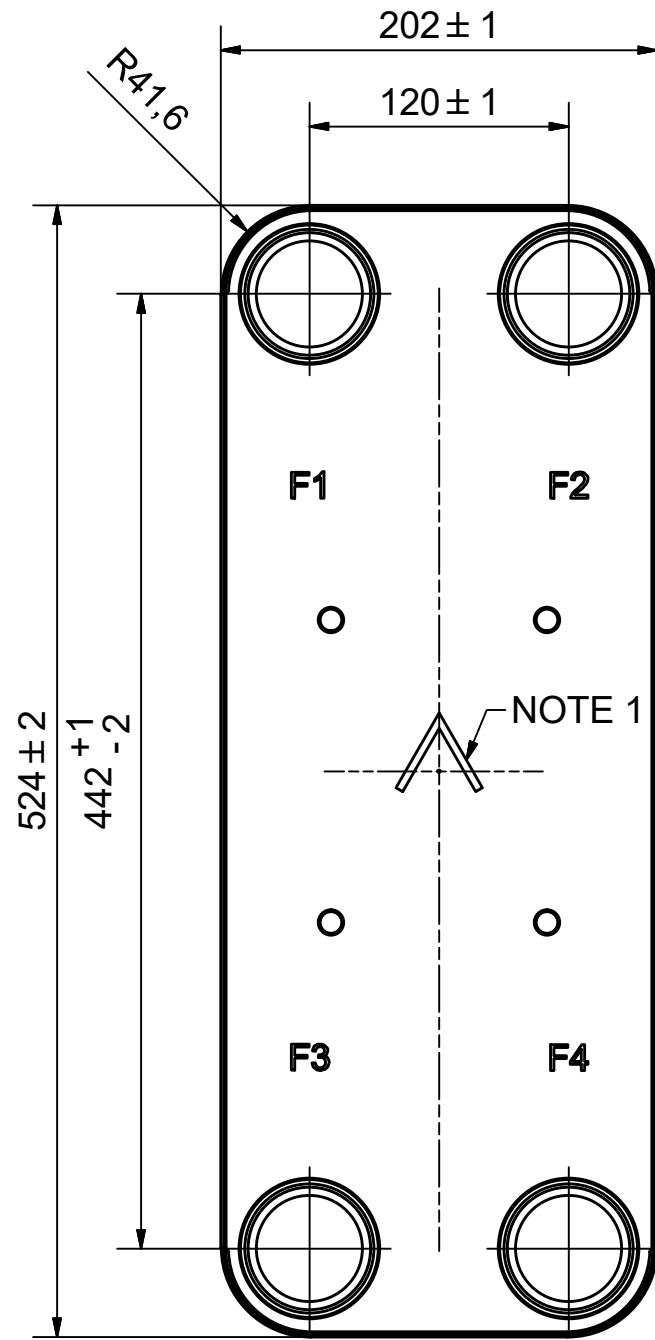
**AXINTRA**

ÉCHANGEURS THERMIQUES

www.axintra.com  
tel : +33 2 98 16 07 22 - contact@axintra.com

**SWEP**  
A DOVER COMPANY



Rev No	Alteration	Date	Checked
01			



**AXINTRA**  
ÉCHANGEURS THERMIQUES

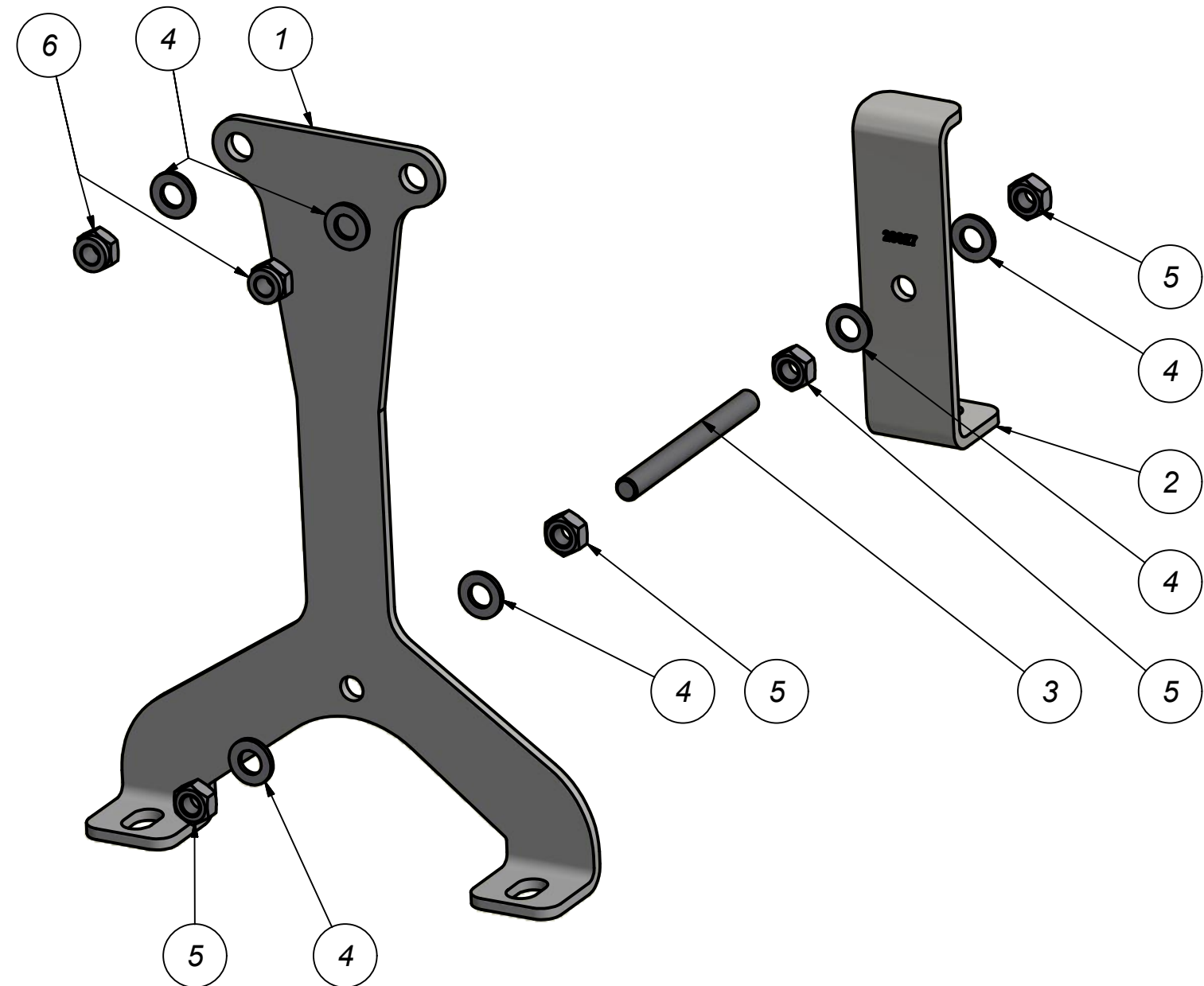
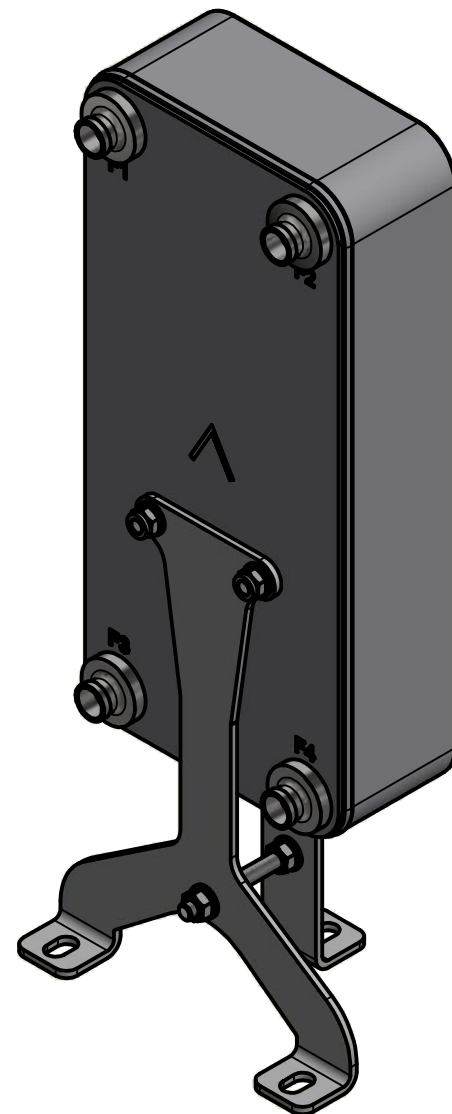
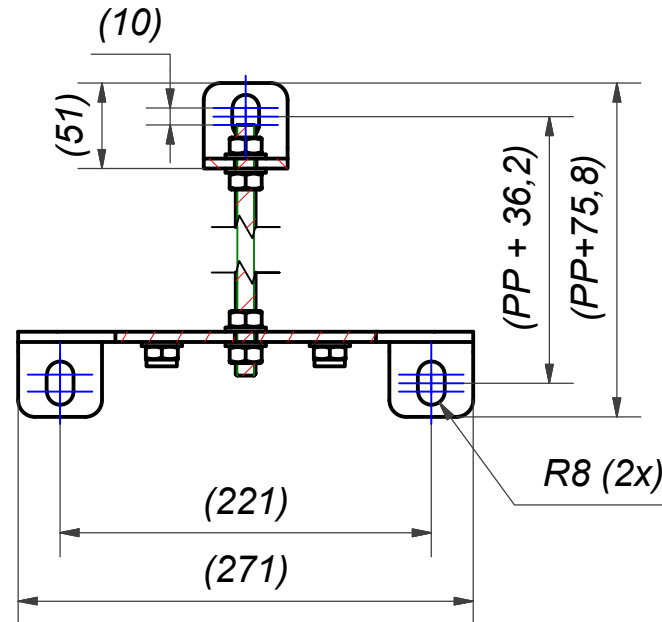
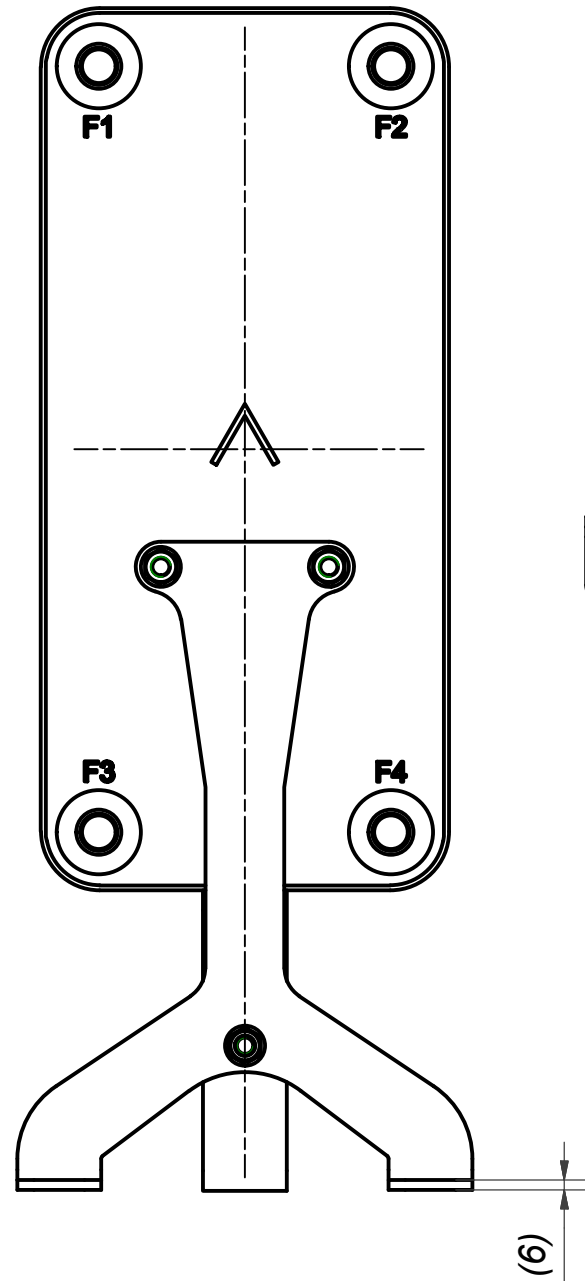
NOTE 1 ALTERNATE MARKING: STICKER OR STAMP

F4	46101	ISO-G 2" A , TH = 54,2	CD000322
F3	46101	ISO-G 2" A , TH = 54,2	CD000322
F2	46101	ISO-G 2" A , TH = 54,2	CD000322
F1	46101	ISO-G 2" A , TH = 54,2	CD000322
F	24023	220 STUD BOLT LOC. F 4x140x100	00045898_1

Title		B220H/1P-SC-S	
 A DOVER COMPANY	Created Date	Created By	
	2020-04-28	AU	
Article/Configuration number		Drawing number	
19142-100		AU00572484	


Pos	Article No	Title / Denomination, code, material, dimension etc	Drawing No./ref	Pos	Article No	Title / Denomination, code, material, dimension etc	Drawing No./ref
-----	------------	---	-----------------	-----	------------	---	-----------------

Rev No	Alteration	Date	Checked	Approved
06	Added NOTE 4 and size 220 to NOTE 1.	2019-05-17	SKDS	PDM

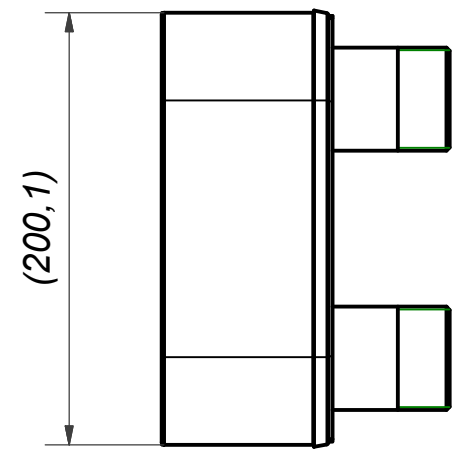
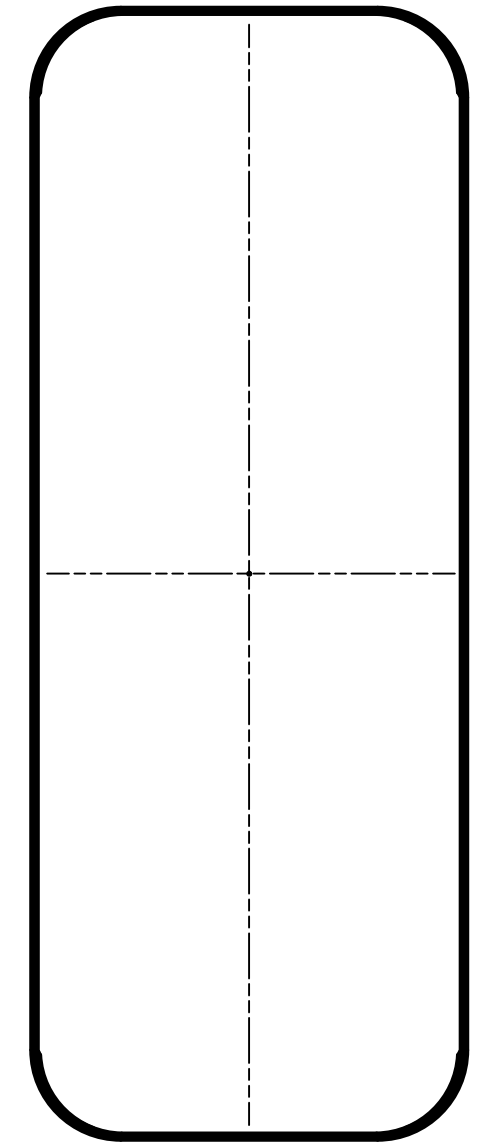
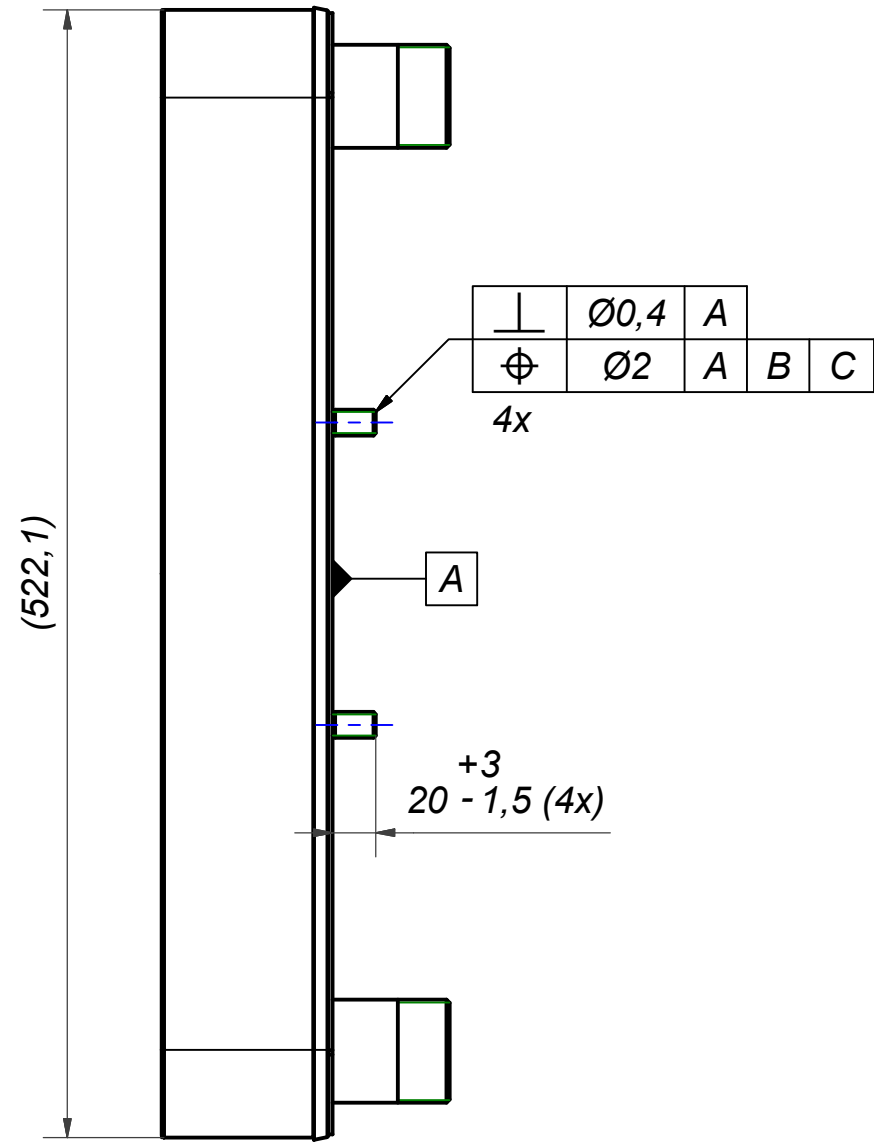
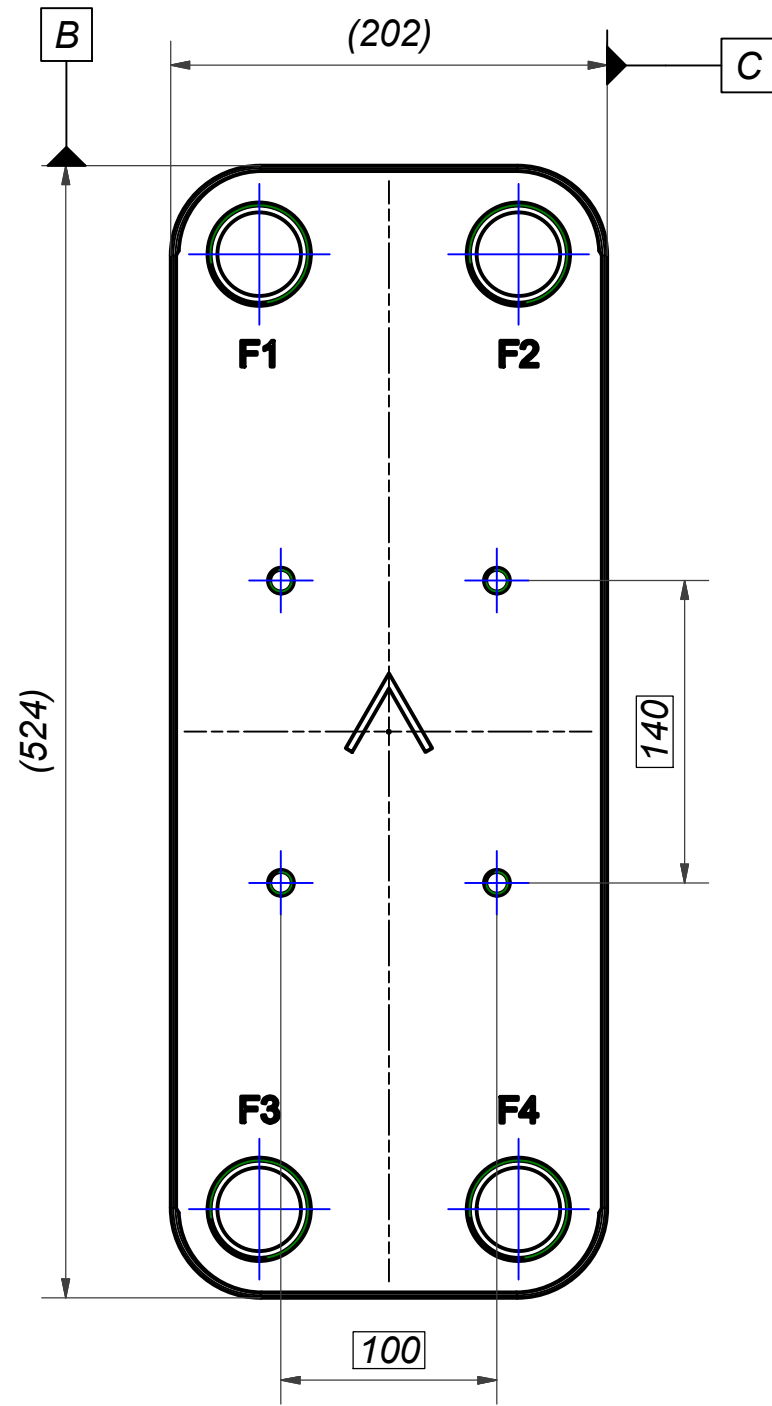



- NOTE 4:** For size 220 is required for connections to have diameter of MAX 65 mm.
- NOTE 3:** Length of threaded bar according drawing CC000168.
- NOTE 2:** For B57 with STD Conn. Stud bolt 21235 is required.
- NOTE 1:** Requires stud bolt 21118, 21120, 24023 (B45, 50, 56, 120T, 200, 220, 320LT, 320HT)

6	2	DIN 985 - M12	DIN 985 - M12
5	4	NUT M12 M6M 8M FZB, 45889	DIN 934 - M12
4	6	WASHER ART. NO 45524	13x24x2.5
3	1	THREADED BAR M12	CC000168
2	1	B35/45/50/57 SUPPORT LEG. ART.NO.28027	CC000165
1	1	B45/50/57 SUPPORT LEG, ART.NO. 28029	CC000167
ITEM	QTY	TITLE	Drawing No.

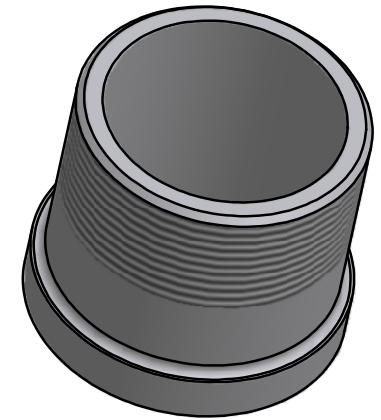
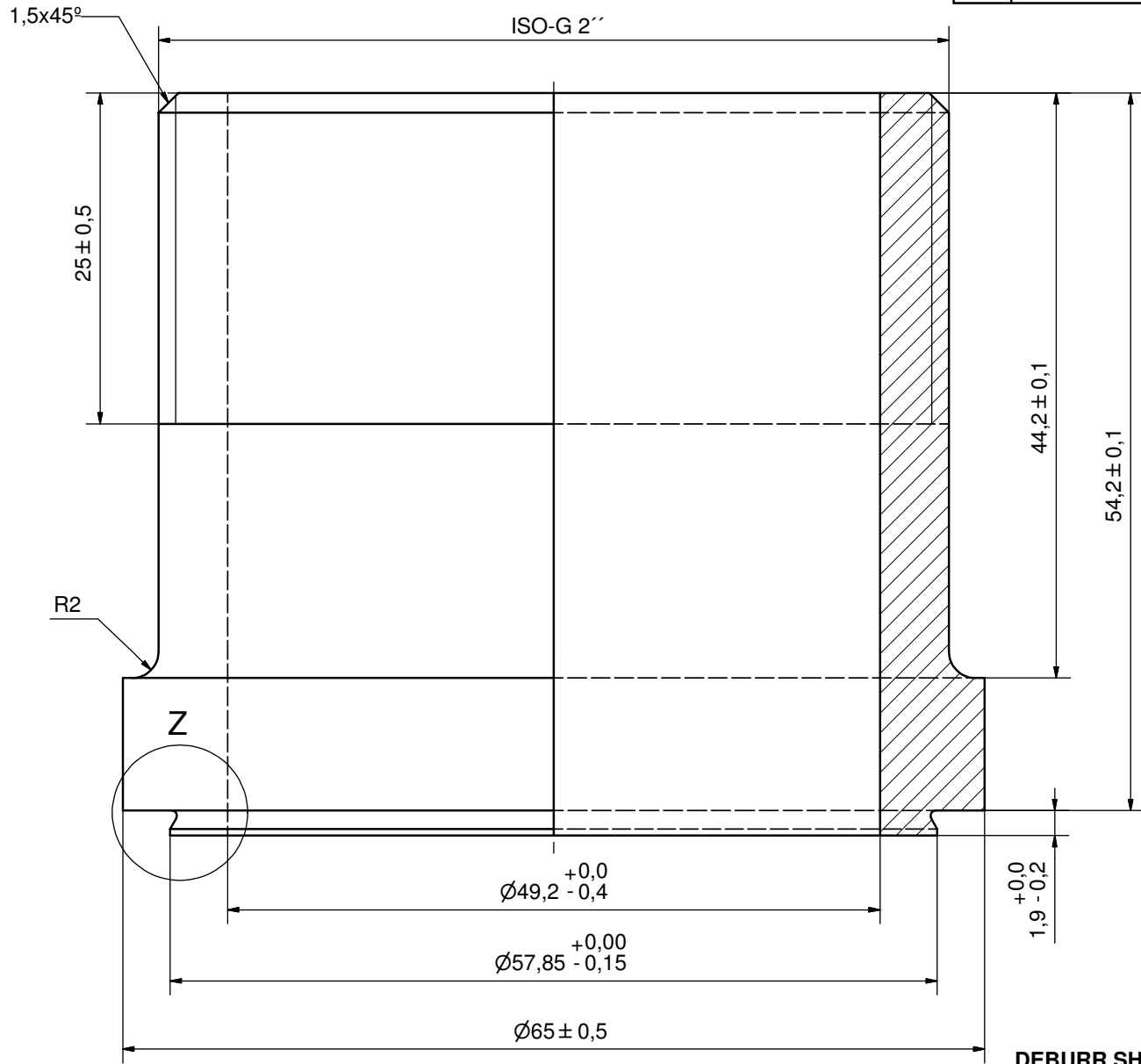
Drawn	Checked	Approved	Created Date	General geometrical tolerancing ISO 2768:	General surface finish $R_a$ :	Scale	Paper size
lathe	PDM	PDM	2005-07-27			-	A3
			<b>B120/50/57 SUPPORT LEG</b>				
Article / Tool number		Design Type	Drawing number	Revision	Sheet		
		CG	CG450025	06	1 (1)		

Rev No	Alteration	Date	Checked	Approved
02	Updated model.	2019-07-24	skds	PDM

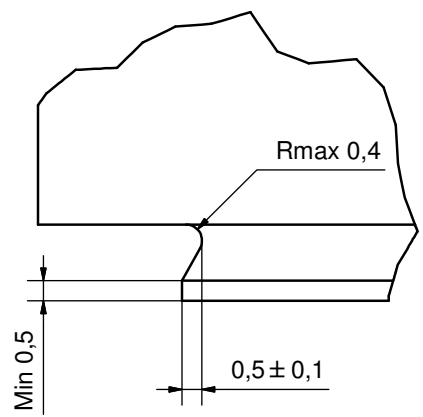


F	4	STUD BOLT M12 x 20, ART. NO. 45095				M12x20		
Item	QTY	Description				Drawing / Article		
Drawn	Checked	Approved	Created Date	General geometrical tolerancing ISO 2768:	General surface finish $R_a$ :	Scale	Paper size	
skds	PDM	PDM	2018-09-26			-	A3	
 A DOVER COMPANY						Title		
						220 STUD BOLT LOC. F 4x140x100		
Article number		Design Type	Drawing number		Revision	Sheet		
24023		CG	00045898		02	1 (1)		

Rev No.	Alteration	Date	Checked	Approved
4	ADDED DEBURR & MATERIAL INFO	2009/07/22	AP	PDM



Z (8 : 1)




DEBURR SHARP EDGES; MAX 0,4

ACCORDING TO MQS  
MATERIAL

© Company Confidential, Property of SWEP International AB

**AXINTRA**  
ÉCHANGEURS THERMIQUES

Drawn RJ	Checked EG	Approved BOS	Created Date 1997-02-17	General geometrical tolerancing ISO 2768 m	General surface finish $R_a$ 3.2	Scale 3:1
			<b>ISO-G 2" A</b>			
Article number -		Drawing number CD000322		Revision 4		Sheet 1 (1)