

B220Hx160/1P-SC-S 4x2" (54)

Code : 19142-160

avec option support au sol 28021

Fiche technique et plans

B220

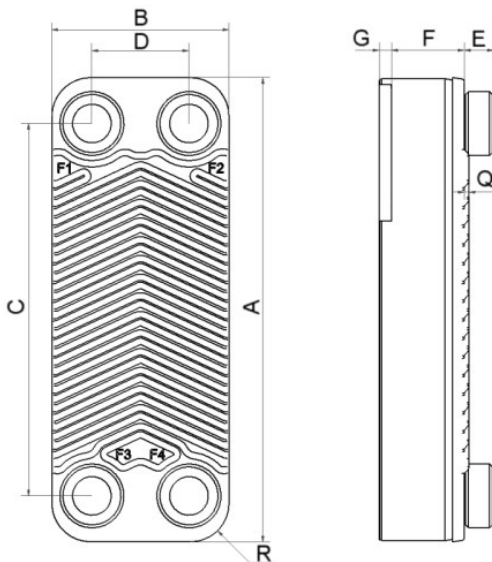
Le modèle B220 est un échangeur de chaleur à plaques brasées compact mais très efficace, offrant une excellente efficacité de transfert thermique à faible coût. L'une de ses principales applications est le chauffage haute efficacité de l'eau chaude sanitaire (ECS), mais on peut aussi l'utiliser dans d'autres applications à une phase telles que le refroidissement de l'huile, le chauffage domestique et les désurchauffeurs. Grâce à sa construction à deux types de plaques, on peut varier la longueur thermique pour obtenir un produit personnalisé aux performances optimales pour chaque application.



Spécifications de base

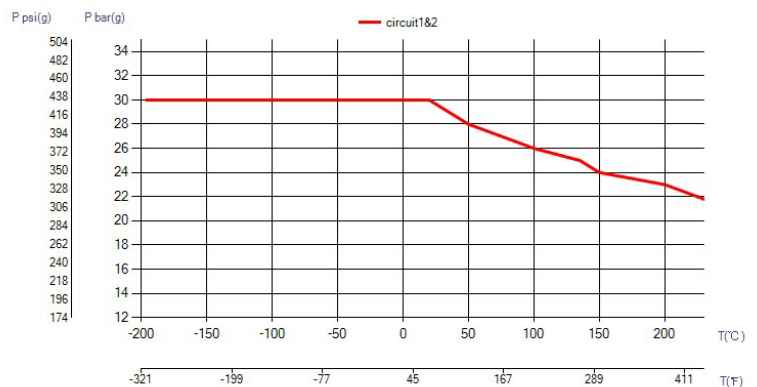
Nombre de plaques max. (NoP)	300
Débit volumétrique max.	39 m³/h (171.71 gpm)
Volume du canal	0.14/0.14 dm³ (0.0049/0.0049 ft³)
Matières	Plaques en acier inoxydable 316/316L, brasage cuivre
Poids sans les connexions	5.30+(0.321*NoP) kg 11.68+(0.708*NoP) lb

Les dimensions standard



#	MM	IN
A	524	20.63
B	202	7.95
C	442	17.4
D	120	4.72
F	6,00+1,73*(NoP)	23.62+6.81*(NoP)
G	4	0.16
R	41.60	1.64
E_1	54	2.13

PED pression / température



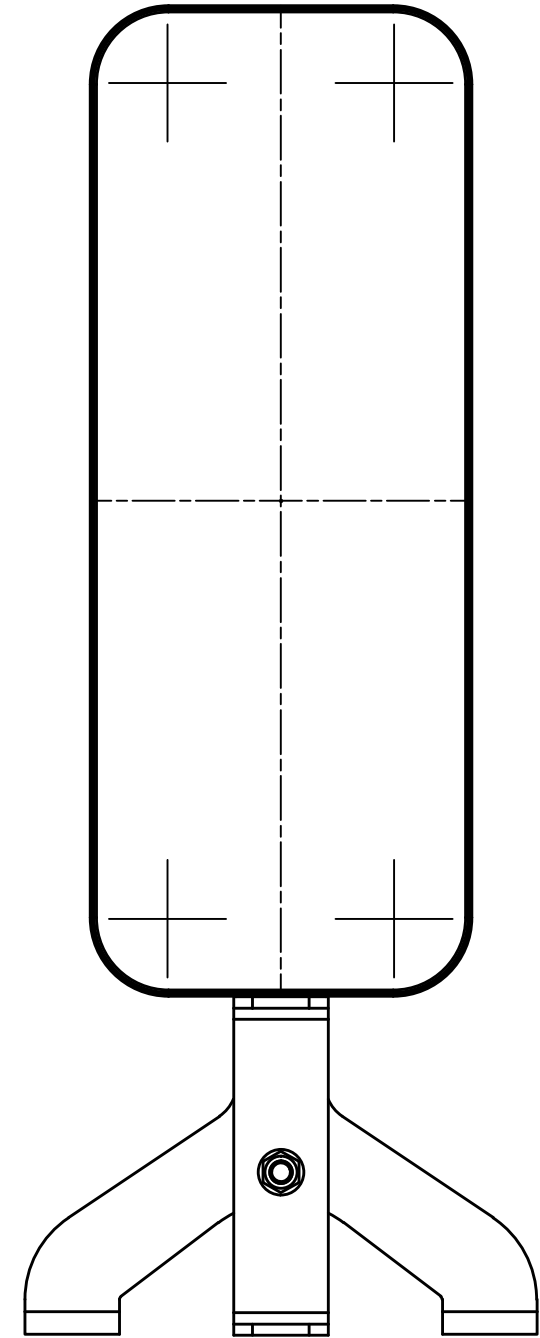
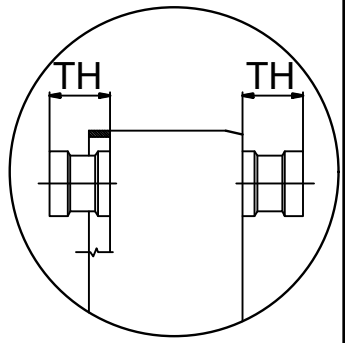
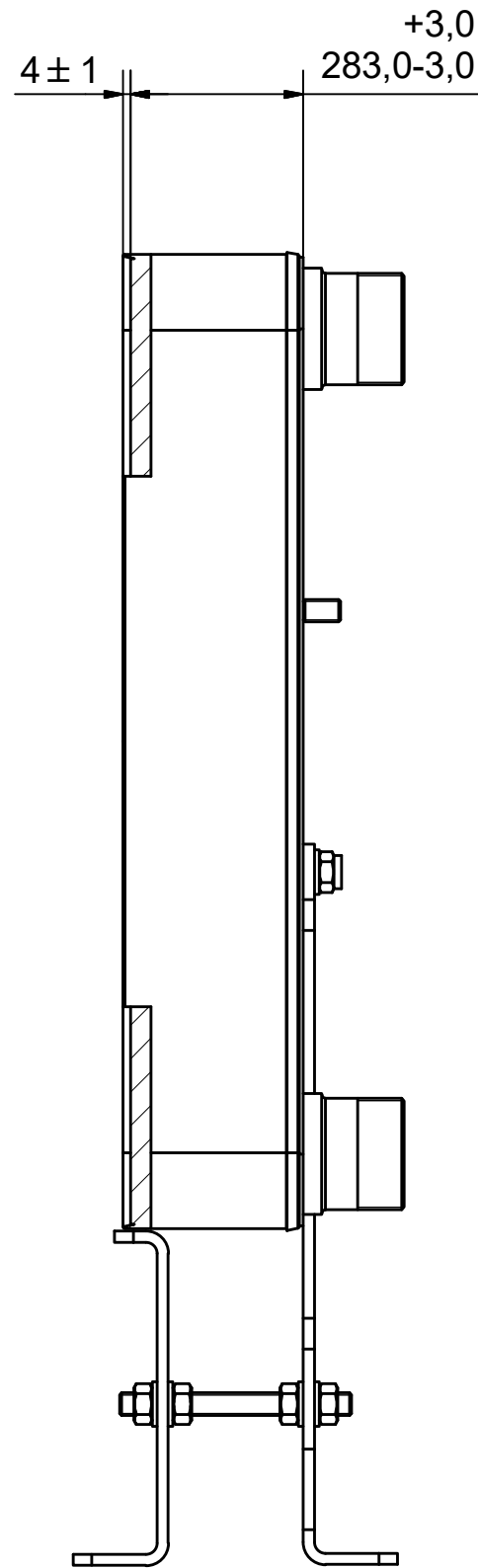
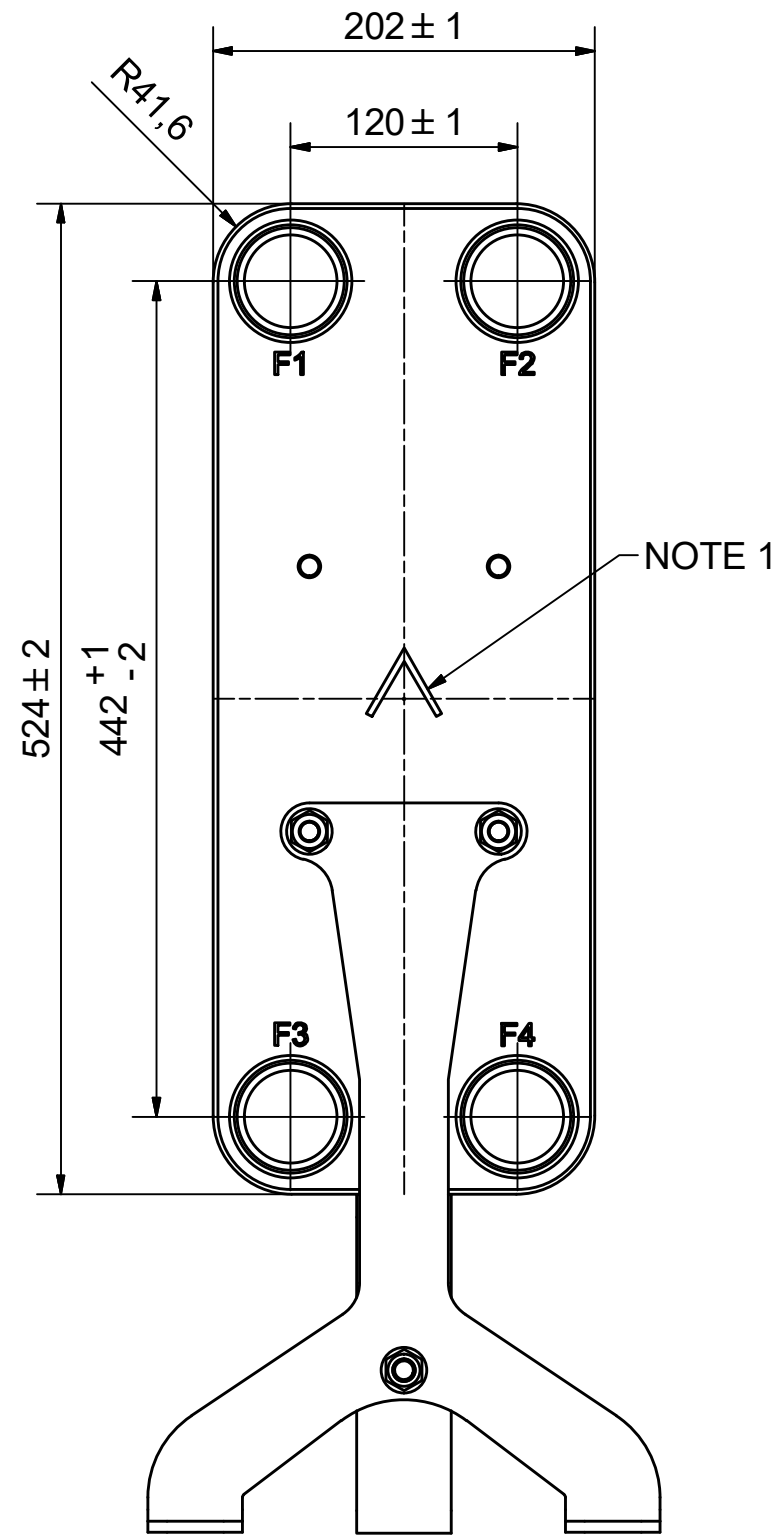
AXINTRA

ÉCHANGEURS THERMIQUES

www.axintra.com
tel : +33 2 98 16 07 22 - contact@axintra.com

SWEP
A DOVER COMPANY

© Company Confidential, Property of SWEP International AB





AXINTRA
ÉCHANGEURS THERMIQUES

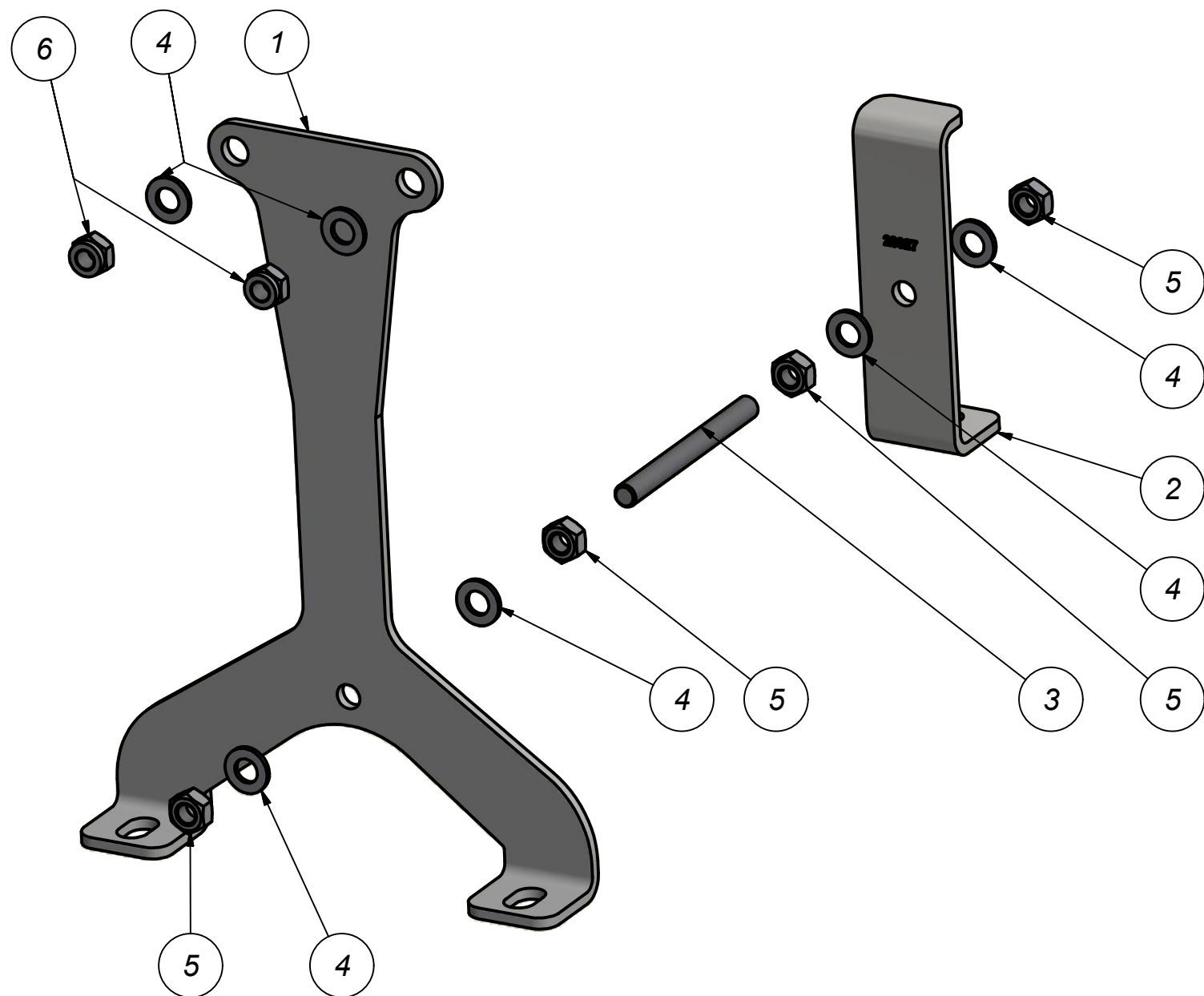
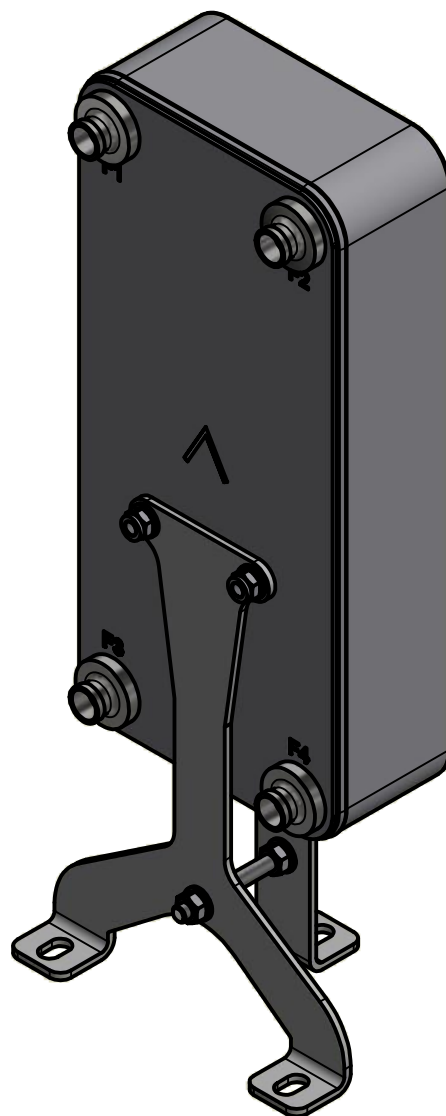
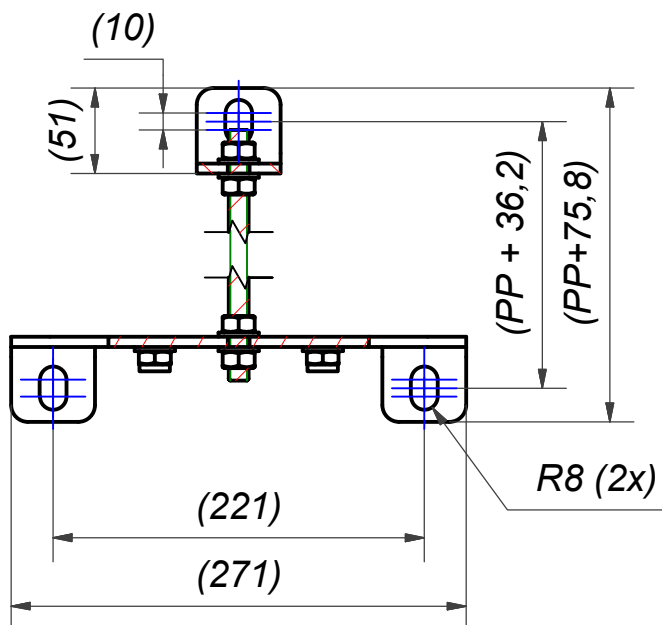
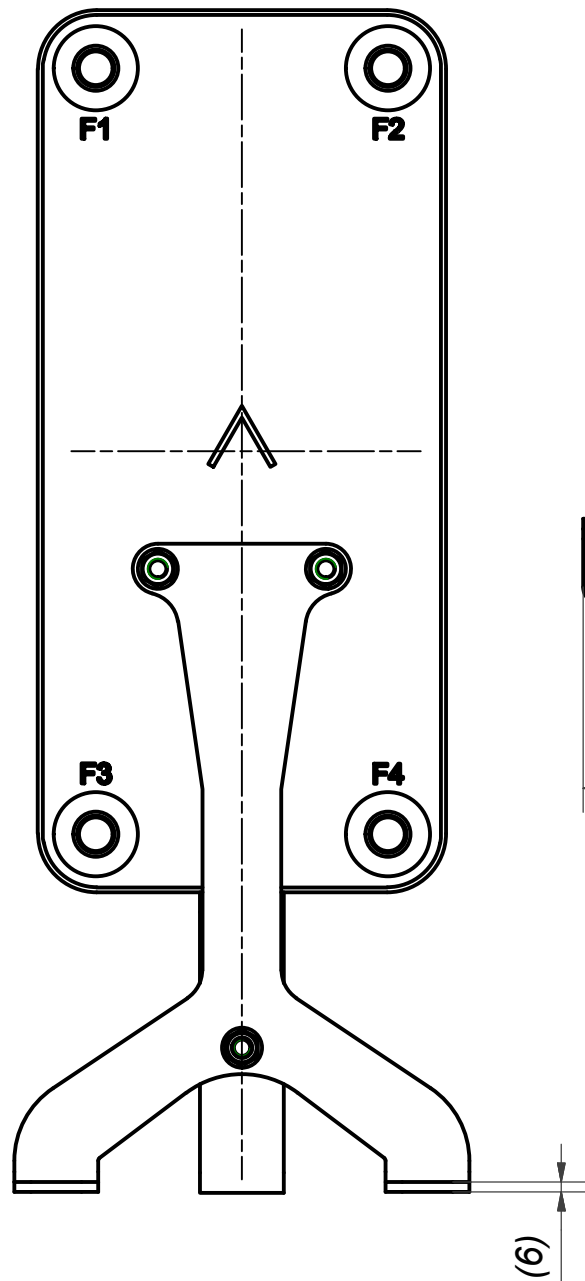
NOTE 1 ALTERNATE MARKING: STICKER OR STAMP

F4	46101	ISO-G 2" A, TH = 54.2	CD000322
F3	46101	ISO-G 2" A, TH = 54.2	CD000322
F2	46101	ISO-G 2" A, TH = 54.2	CD000322
F1	46101	ISO-G 2" A, TH = 54.2	CD000322
F	28021	B120T/50/57 SUPPORT LEG	CG450025_2
F	24023	220 STUD BOLT LOC. F 4x140x100	00045898_1

Pos	Article No	Title / Denomination, code, material, dimension etc	Drawing No./ref	Pos	Article No	Title / Denomination, code, material, dimension etc	Drawing No./ref
-----	------------	---	-----------------	-----	------------	---	-----------------

Title		B220H/1P-SC-S	
 A DOVER COMPANY	Created Date	Created By	
	2/14/2022	AU	
Article/Configuration number		Drawing number	
19142-160		AU00682797_19142-160	

Rev No	Alteration	Date	Checked	Approved
06	Added NOTE 4 and size 220 to NOTE 1.	2019-05-17	SKDS	PDM



- NOTE 4:** For size 220 is required for connections to have diameter of MAX 65 mm.
- NOTE 3:** Length of threaded bar according drawing CC000168.
- NOTE 2:** For B57 with STD Conn. Stud bolt 21235 is required.
- NOTE 1:** Requires stud bolt 21118, 21120, 24023 (B45, 50, 56, 120T, 200, 220, 320LT, 320HT)

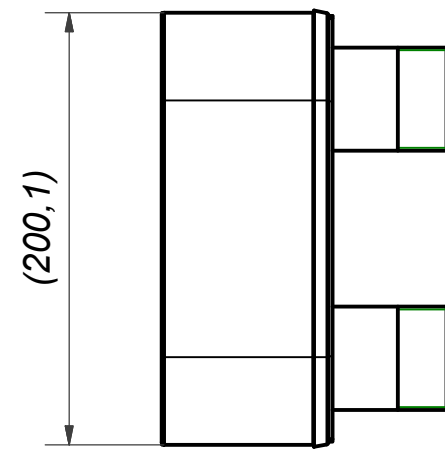
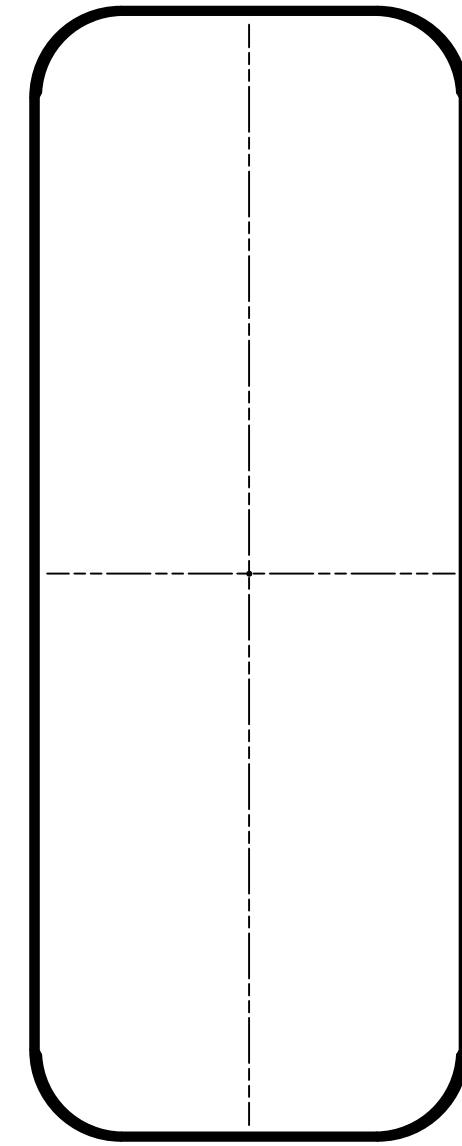
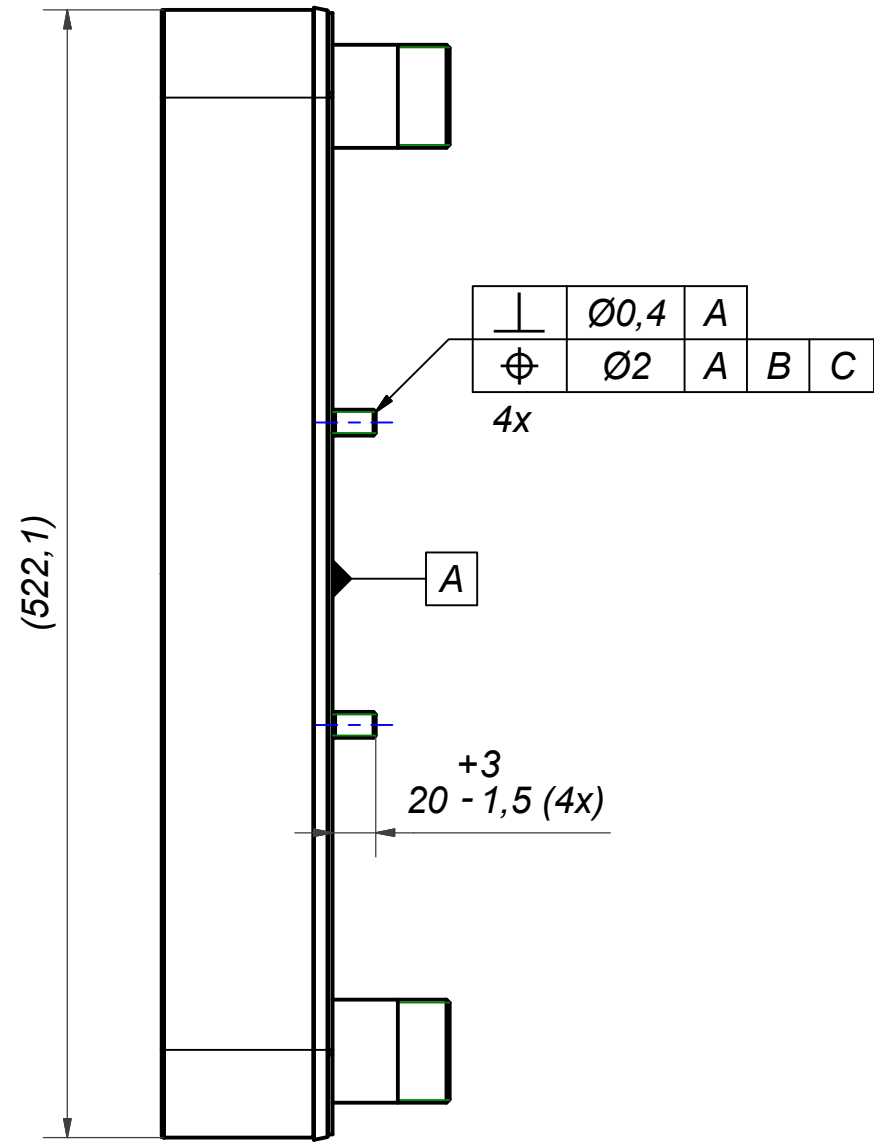
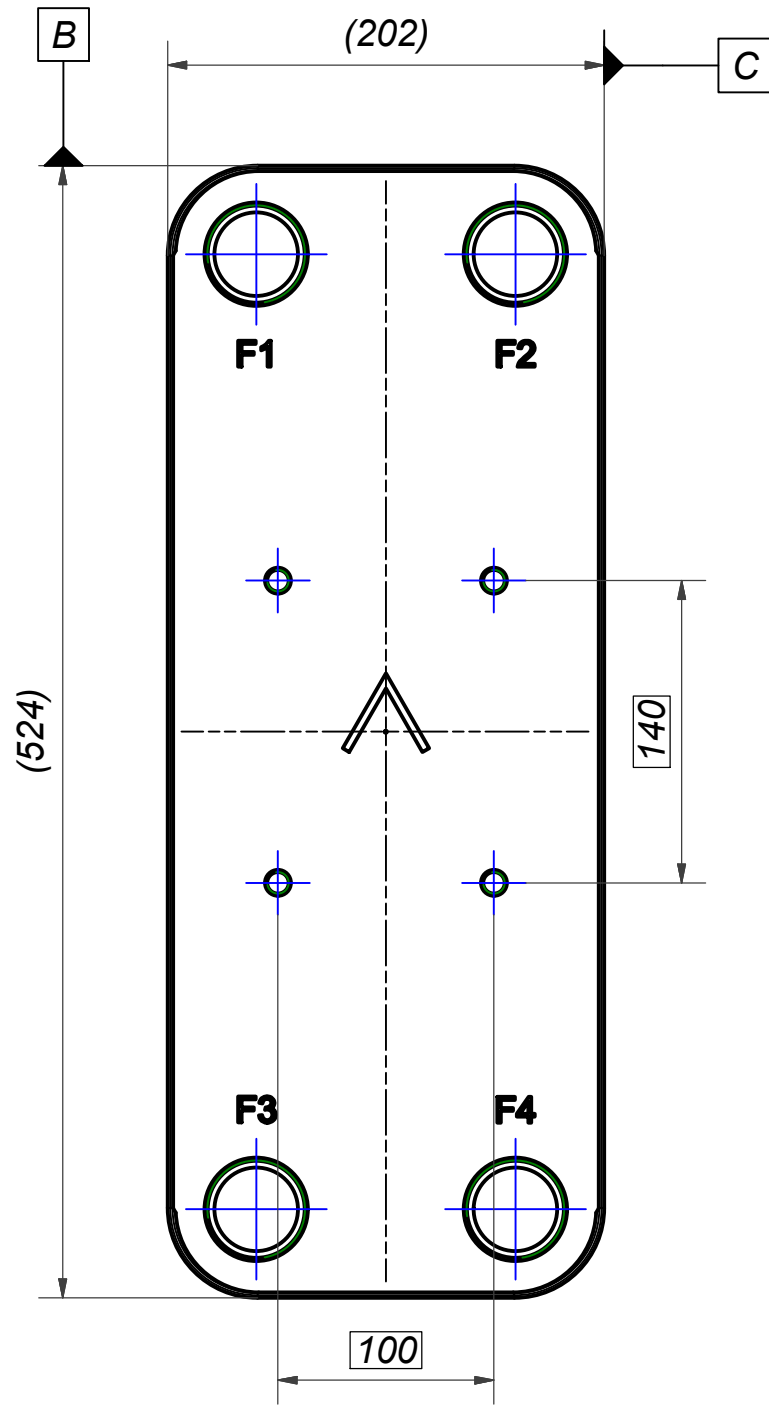
6	2	DIN 985 - M12	DIN 985 - M12
5	4	NUT M12 M6M 8M FZB, 45889	DIN 934 - M12
4	6	WASHER ART. NO 45524	13x24x2.5
3	1	THREADED BAR M12	CC000168
2	1	B35/45/50/57 SUPPORT LEG. ART.NO.28027	CC000165
1	1	B45/50/57 SUPPORT LEG, ART.NO. 28029	CC000167
ITEM	QTY	TITLE	Drawing No.

Drawn	Checked	Approved	Created Date	General geometrical tolerancing ISO 2768:	General surface finish R_a :	Scale	Paper size
lathe	PDM	PDM	2005-07-27			-	A3




Title				
B120/50/57 SUPPORT LEG				
Article / Tool number	Design Type	Drawing number	Revision	Sheet
	CG	CG450025	06	1 (1)

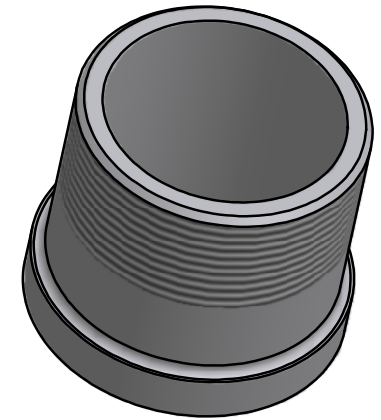
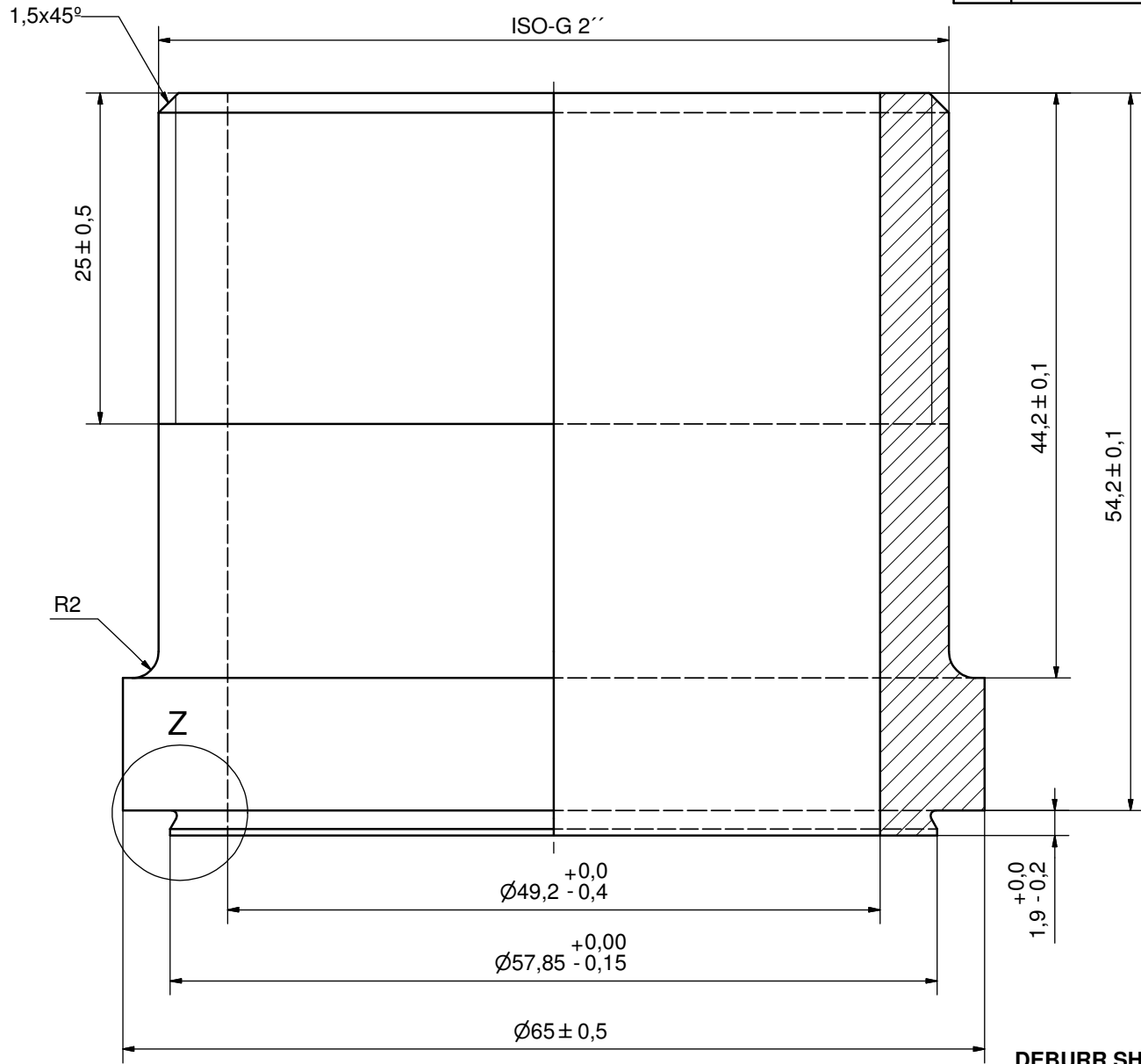
Rev No	Alteration	Date	Checked	Approved
02	Updated model.	2019-07-24	skds	PDM



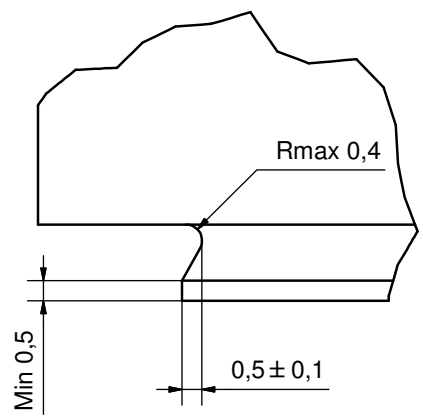
© Company Confidential, Property of SWEP International AB

F	4	STUD BOLT M12 x 20, ART. NO. 45095				M12x20		
Item	QTY	Description				Drawing / Article		
Drawn	Checked	Approved	Created Date	General geometrical tolerancing ISO 2768:	General surface finish R_a :	Scale	Paper size	
skds	PDM	PDM	2018-09-26			-	A3	
						Title		
						220 STUD BOLT LOC. F 4x140x100		
Article number		Design Type	Drawing number	Revision	Sheet			
24023		CG	00045898	02	1 (1)			

Rev No.	Alteration	Date	Checked	Approved
4	ADDED DEBURR & MATERIAL INFO	2009/07/22	AP	PDM



Z (8 : 1)



DEBURR SHARP EDGES; MAX 0,4

ACCORDING TO MQS
MATERIAL

© Company Confidential, Property of SWEP International AB

AXINTRA
ÉCHANGEURS THERMIQUES

Drawn RJ	Checked EG	Approved BOS	Created Date 1997-02-17	General geometrical tolerancing ISO 2768 m	General surface finish R_a 3.2	Scale 3:1
			ISO-G 2" A			
Article number -		Drawing number CD000322		Revision 4		Sheet 1 (1)