

B25T

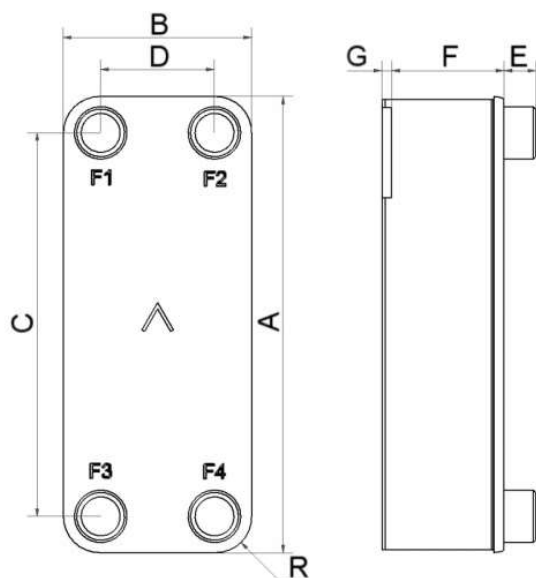
Le modèle B25T propose des solutions d'échange thermique efficace pour une large fourchette de capacités. La polyvalence et l'excellent transfert thermique de ce produit en font le choix idéal pour les applications eau/eau exigeantes et comme de très performance condenseurs.



Spécifications de base

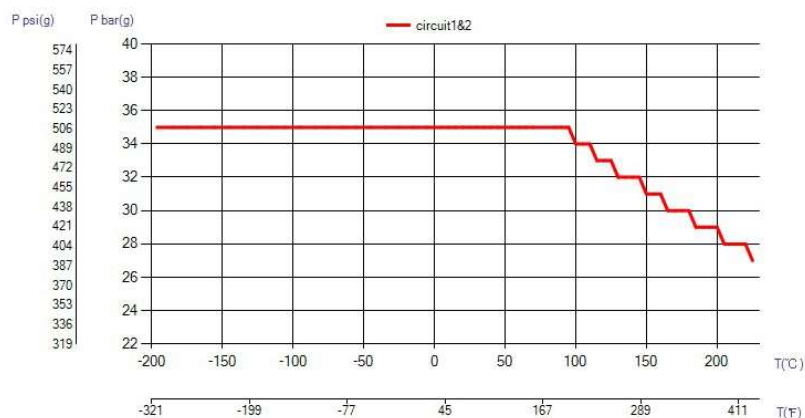
| | |
|------------------------------|--|
| Nombre de plaques max. (NoP) | 140 |
| Débit volumétrique max. | 9 m ³ /h (39.63 gpm) |
| Volume du canal | 0.111/0.111 dm ³ (0.0039/0.0039 ft ³) |
| Matières | Plaques en acier inoxydable 316, brasage cuivre |
| Poids sans les connexions | 2.13+(0.1775*NoP) kg 4.69+(0.391*NoP) lb |

Les dimensions standard

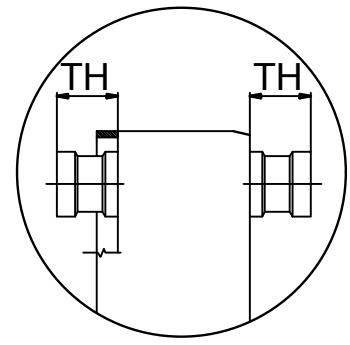
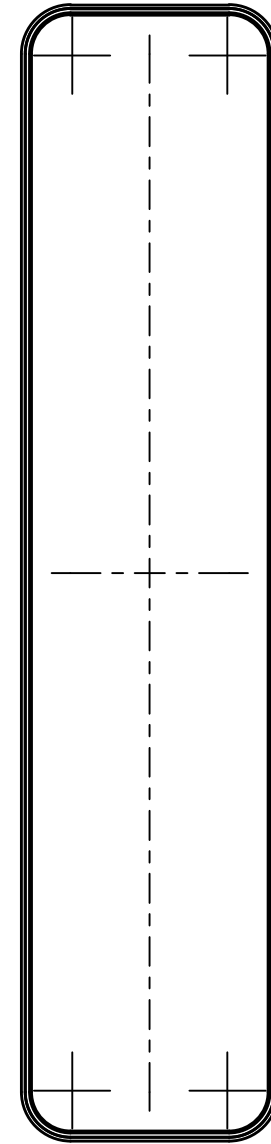
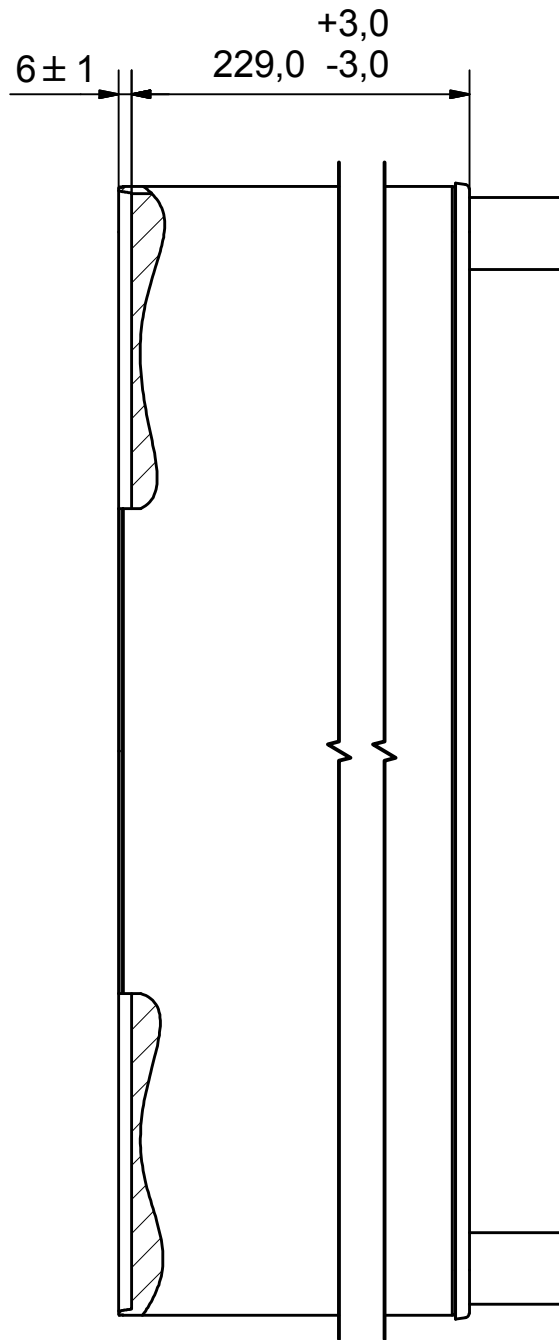
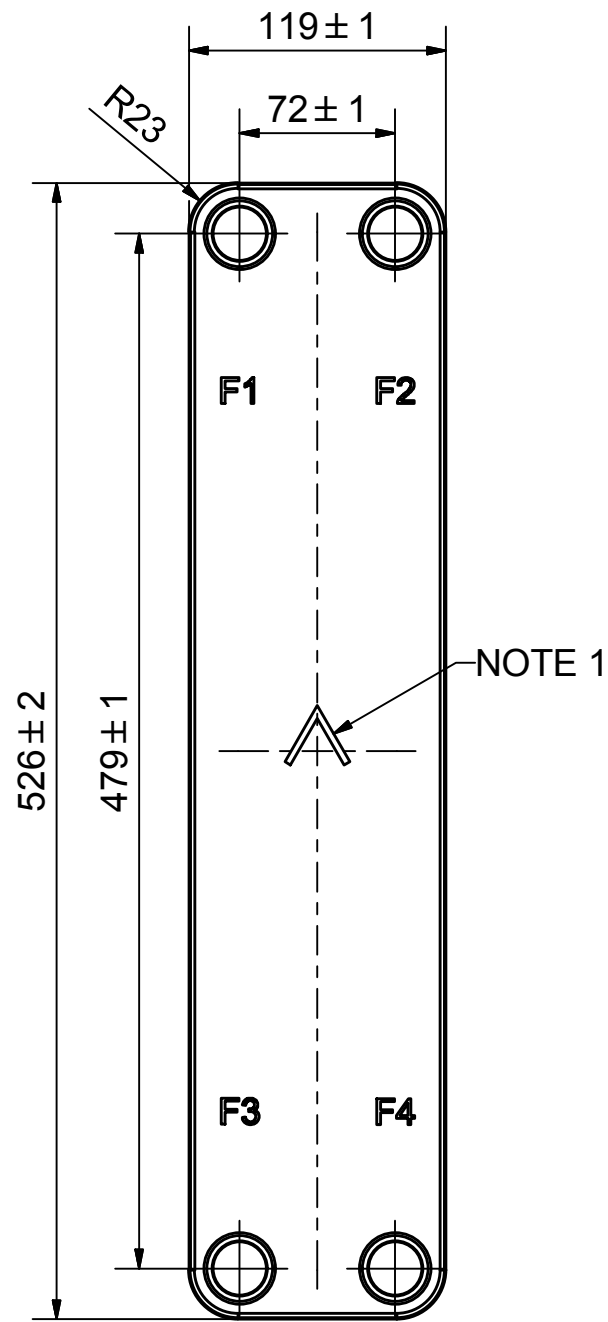


| # | MM | N |
|-----|-----------------|-----------------|
| A | 526 | 20.71 |
| B | 119 | 4.69 |
| C | 479 | 18.86 |
| D | 72 | 2.83 |
| F | 4.00+2.25*(NoP) | 0.16+0.09*(NoP) |
| G | 6 | 0.24 |
| R | 23 | 0.91 |
| E_1 | 20 | 0.79 |

PED pression / température

**AXINTRA**

ÉCHANGEURS THERMIQUES





AXINTRA
ÉCHANGEURS THERMIQUES

NOTE 1 ALTERNATE MARKING: STICKER OR STAMP

13845-100

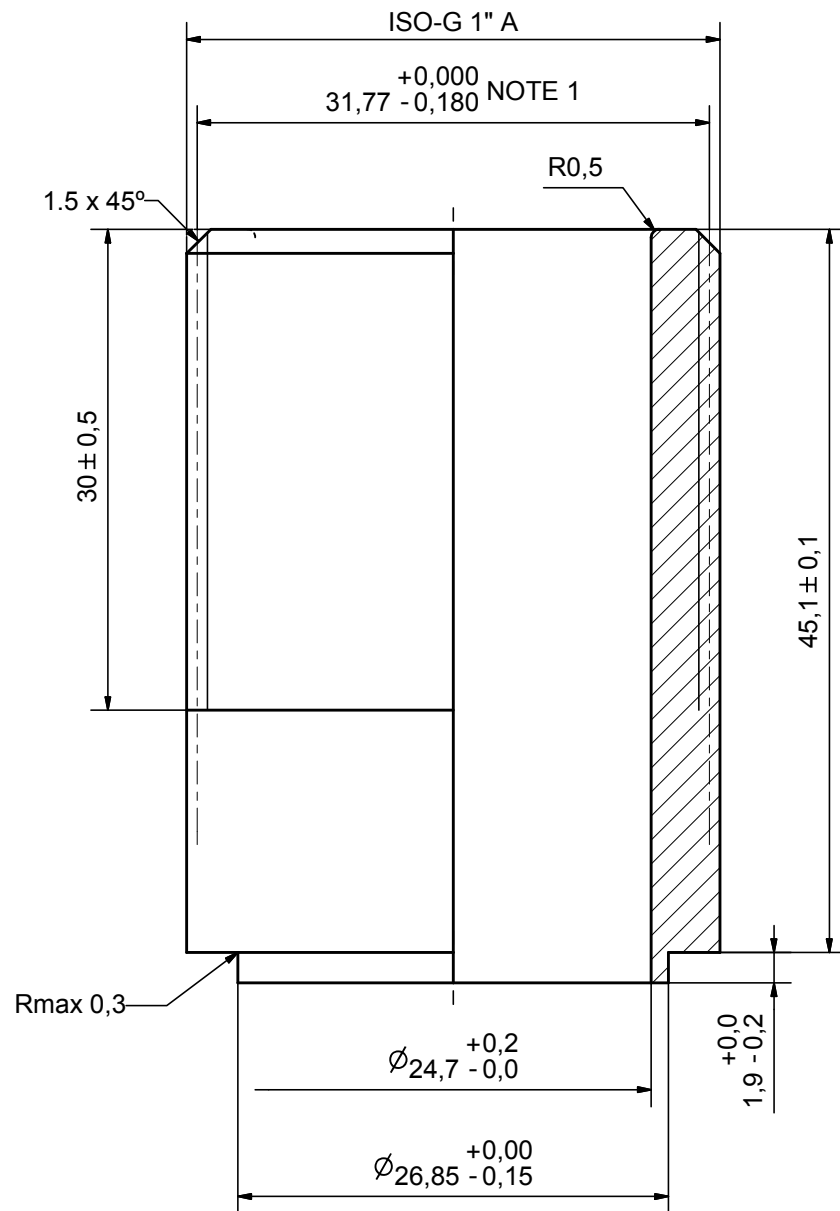
| | | | |
|----|-------|-----------------------|----------|
| F4 | 45051 | ISO-G 1" A, TH = 45,1 | CD000036 |
| F3 | 45051 | ISO-G 1" A, TH = 45,1 | CD000036 |
| F2 | 45051 | ISO-G 1" A, TH = 45,1 | CD000036 |
| F1 | 45051 | ISO-G 1" A, TH = 45,1 | CD000036 |

| | | | |
|--|------------------------------|----------------|---|
| Title | | B25TH/1P-SC-S | |
|  A DOVER COMPANY | Created Date | Created By |  |
| | 2017-06-28 | AU | |
| | Article/Configuration number | Drawing number | |
| | 13845-100 | AU00282121 | |

| Pos | Article No | Title / Denomination, code, material, dimension etc | Drawing No./ref | Pos | Article No | Title / Denomination, code, material, dimension etc | Drawing No./ref |
|-----|------------|---|-----------------|-----|------------|---|-----------------|
|-----|------------|---|-----------------|-----|------------|---|-----------------|


SWEP MANUFACTURING

| Rev No. | Alteration | Date | Checked | Approved |
|---------|-----------------------------|------------|---------|----------|
| 14 | CHANGED TOLERANCE OF THREAD | 2006/12/11 | THE | PDM |



NOTE 1: ADDITIONAL REQUIREMENT ON ISO 228/1 THREAD
PERMISSIBLE TOLERANCE ON PITCH DIAMETER

ACCORDING TO MQS
MATERIAL

| Drawn | Checked | Approved | Created Date | General geometrical tolerancing ISO 2768 | General surface finish R_a | Scale |
|---|---------|----------------|----------------------------|--|------------------------------|-------|
| EG | HR | BOS | 1990/09/08 | m | 3.2 | 3:1 |
|  | | | Title ISO-G 1" A | | | |
| Article number | | Drawing number | | Revision | Sheet | |
| - | | CD000036 | | 14 | 1 (2) | |