

# V10T

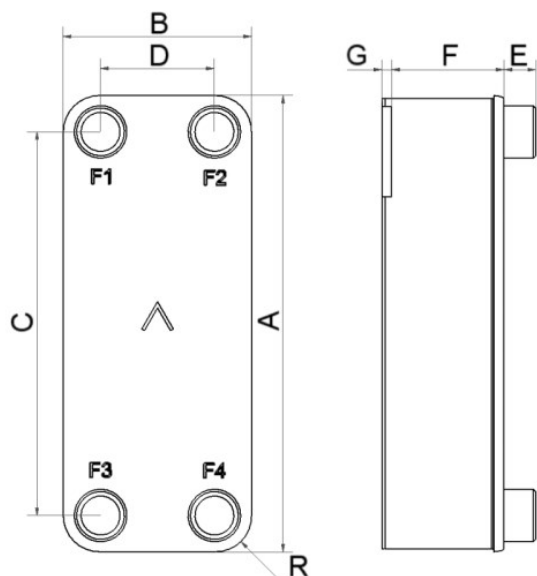
Le V10T est le plus petit de nos évaporateurs. Il fournit un excellent transfert de chaleur dans de nombreuses applications de refroidissement. Il remplace des technologies traditionnelles, comme les échangeurs thermiques coaxiaux/ tubulaire. Le V10T est polyvalent et garde toute son efficacité avec tous les réfrigérants modernes.



## Spécifications de base

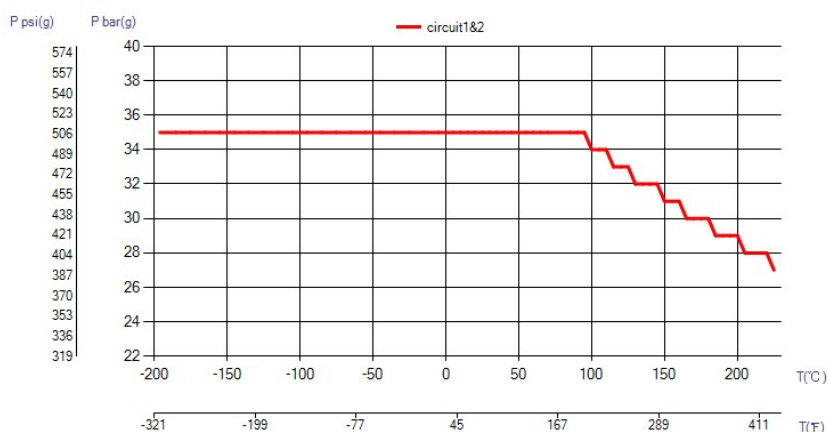
Nombre de plaques max. (NoP)	140
Débit volumétrique max.	9 m <sup>3</sup> /h (39.63 gpm)
Volume du canal	0.061/0.061 dm <sup>3</sup> (0.0022/0.0022 ft <sup>3</sup> )
Matières	Plaques en acier inoxydable 316, brasage cuivre
Poids sans les connexions	1.15+(0.12*NoP) kg 2.54+(0.265*NoP) lb

## Les dimensions standard

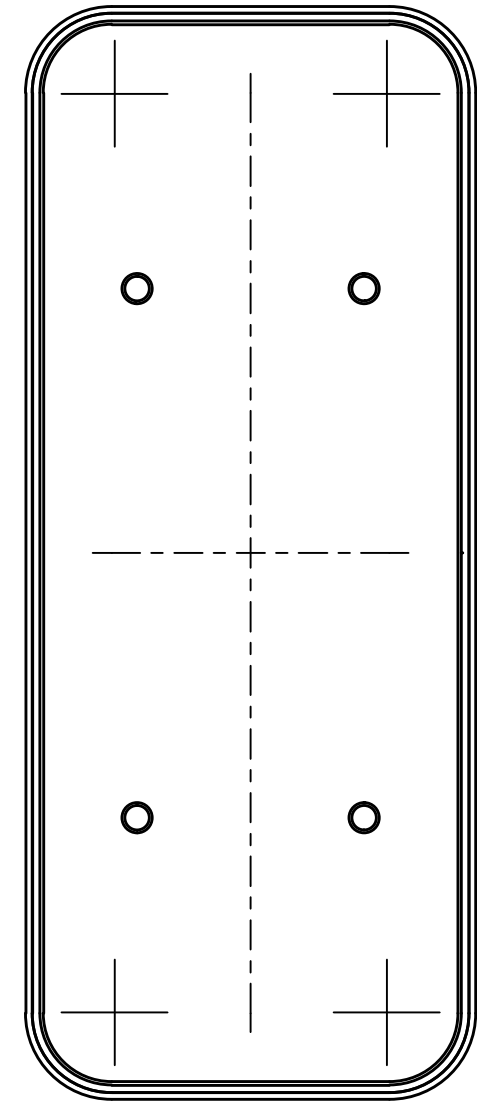
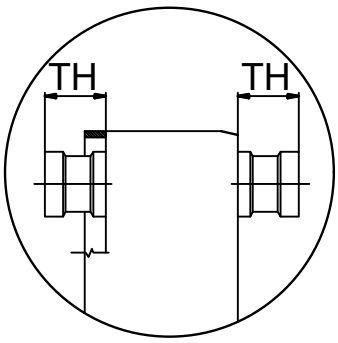
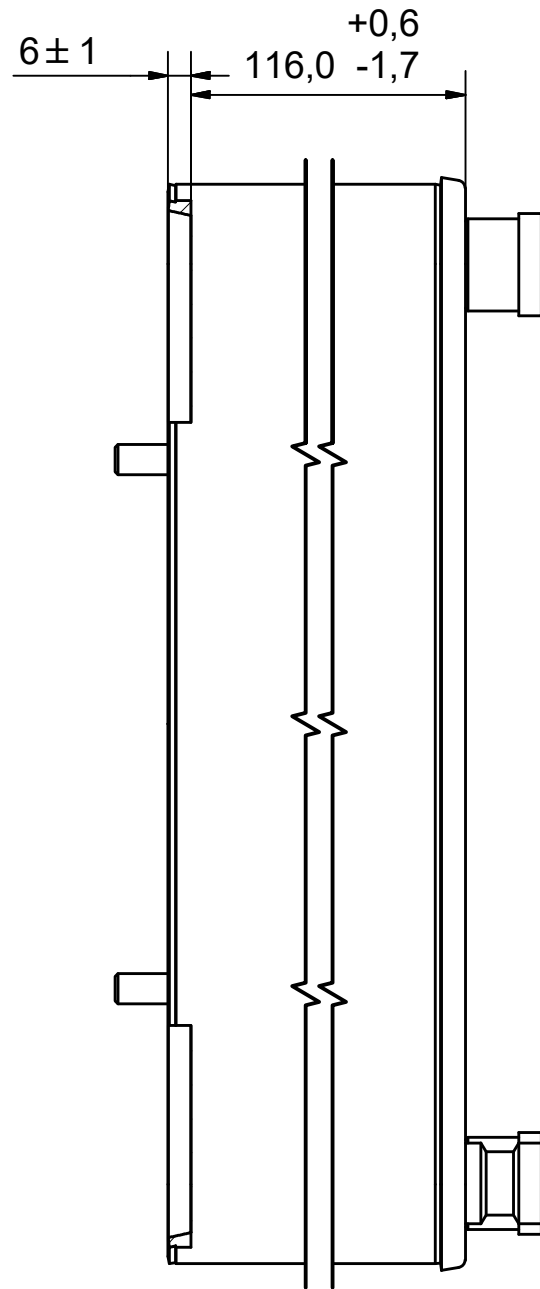
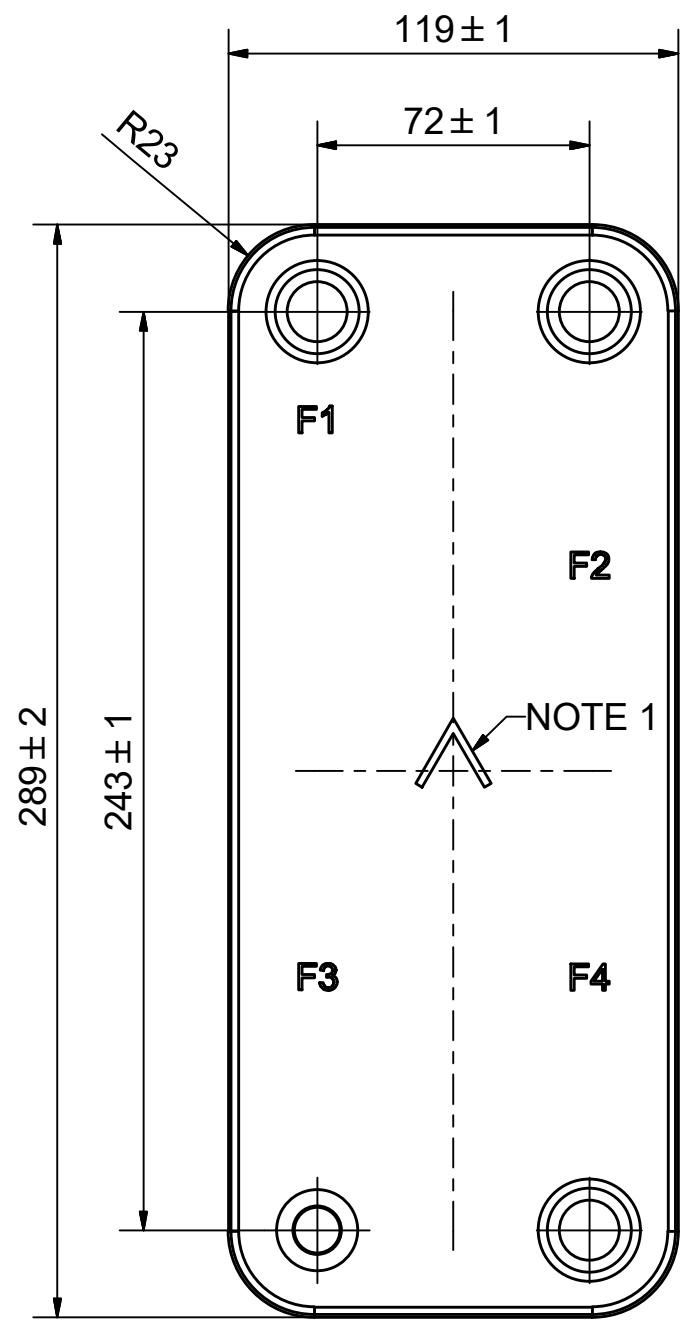


#	MM	IN
A	289	11.38
B	119	4.69
C	243	9.57
D	72	2.83
F	4.00+2.24*(NoP)	0.16+0.09*(NoP)
G	6	0.24
R	22	0.87
E_1	20	0.79

## PED pression / température




ÉCHANGEURS THERMIQUES

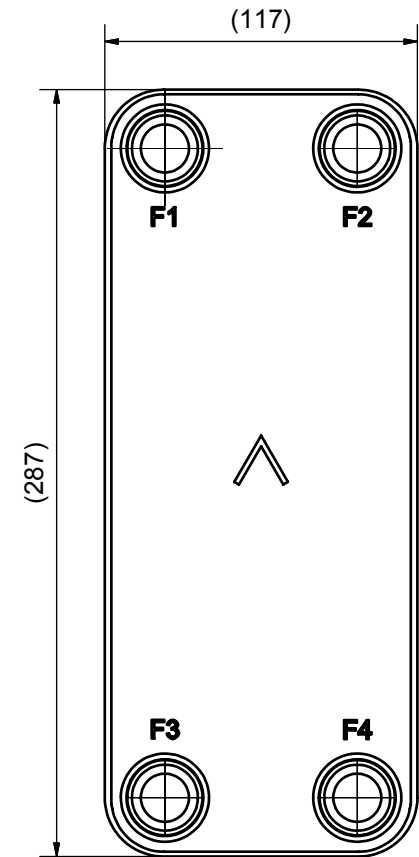
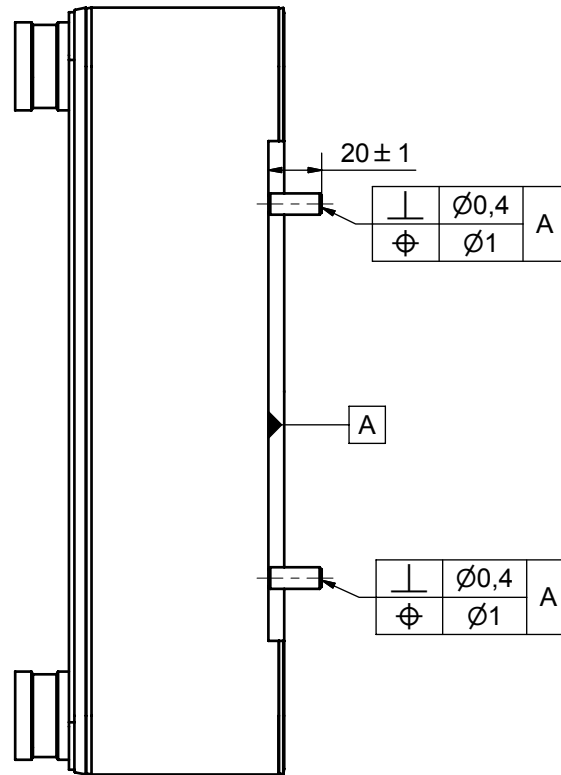
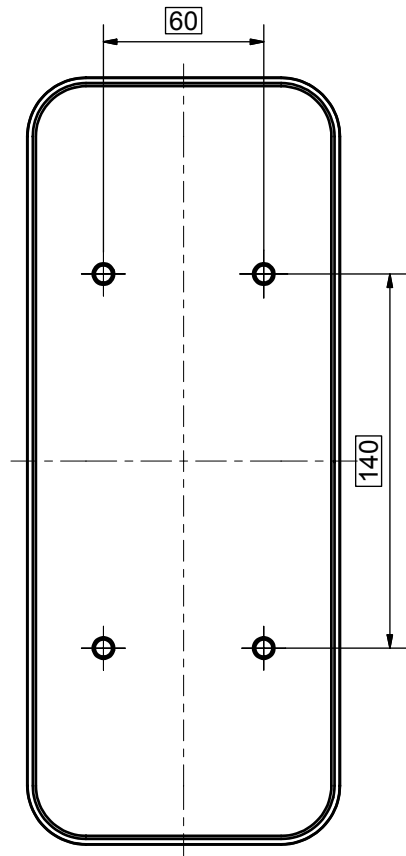




**AXINTRA**  
ÉCHANGEURS THERMIQUES

NOTE 1 ALTERNATE MARKING: STICKER OR STAMP

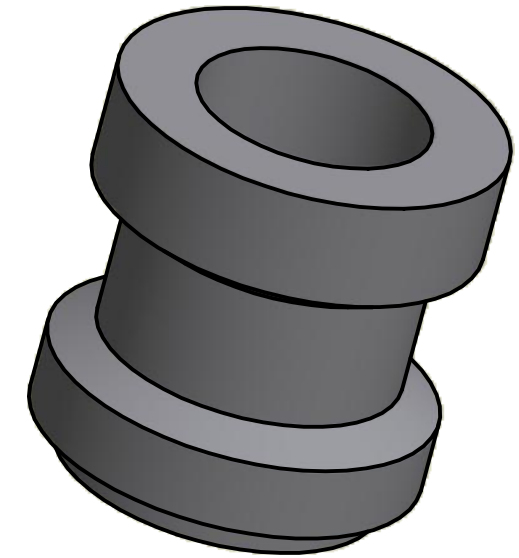
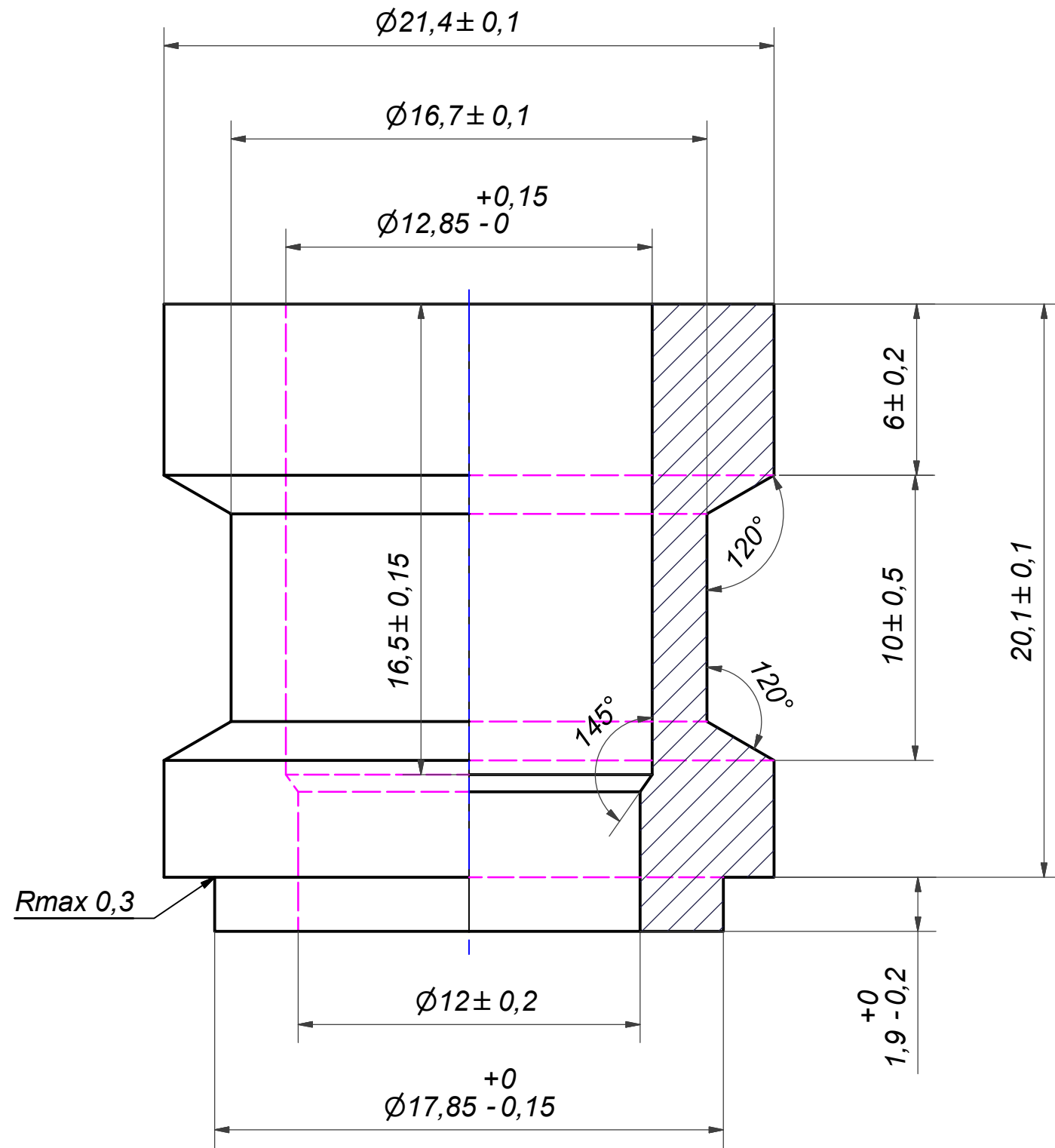
F4	45072	SOLDER 22U, TH = 20,1	CD000094				
F3	45080	SOLDER ø12,8, TH = 20,1	CD000097				
F2	45072	SOLDER 22U, TH = 20,1	CD000094				
F1	45072	SOLDER 22U, TH = 20,1	CD000094	P	21039	B10 BOLT LOC F 4xC140x60	CG100079
Pos	Article No	Title / Denomination, code, material, dimension etc	Drawing No./ref	Pos	Article No	Title / Denomination, code, material, dimension etc	Drawing No./ref

Title		V10TH/1P-SC-S	
 A DOVER COMPANY		Created Date	2024-01-19
		Created By	AU
		Article/Configuration number	16765-50
		Drawing number	AU00776345_16765-50



1	4	STUD BOLT M8x20 ART.NO 45162					M8 x 20
ITE	QTY	DESCRIPTION					Drawing No.
Drawn	Checked	Approved	Created Date	General geometrical tolerancing ISO 2768	General surface finish $R_a$	Scale	
ANO	PDM	PDM	2005-02-17	m	3.2	-	
		<b>Title</b> <b>B10/12 BOLT LOC P 4xC140x60</b>					
		Article number	Drawing number	Revision	Sheet		
		21039	CG100079	-	1 (1)		

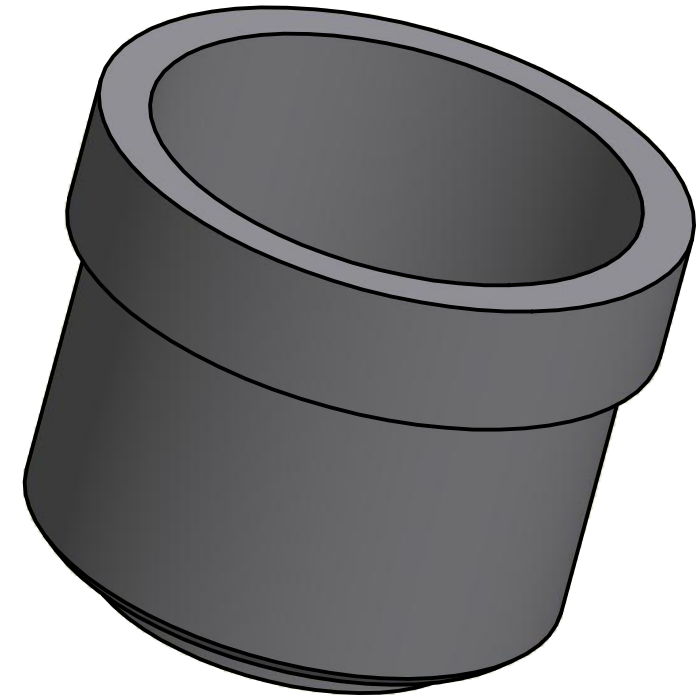
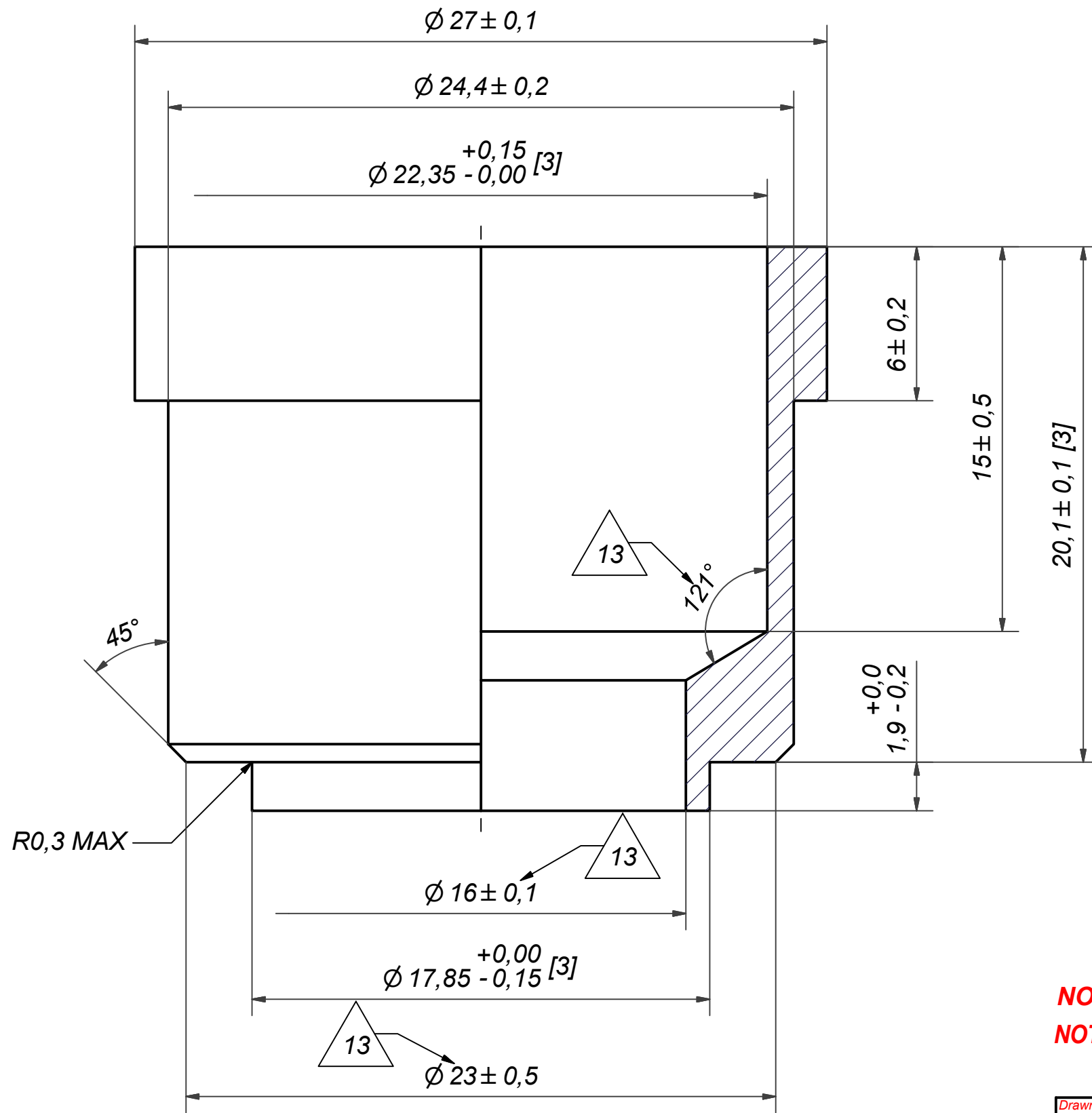
Rev No.	Alteration	Date	Checked	Approved
8	REDRAWN IN INVENTOR	2004/07/07	TN	PDM



© Company Confidential, Property of SWEP International AB


Drawn miguser	Checked TP	Approved VP	Created Date 1990-09-08	General geometrical tolerancing ISO 2768 m	General surface finish $R_a$ 3.2		Scale 5:1
		<b>SOLDER <math>\varnothing 12,8</math></b>					
			Article number	Drawing number CD000097	Revision 08	Sheet 1 (1)	

Rev No	Alteration	Date	Checked	Approved
13	DESIGN CHANGE ACCORDING TO RD100699 AND ADDED MARK FOR CRITICAL CHARACTERISTICS	2013-11-05	INPKP	VP



**NOTE 2: [3] - CRITICAL/SPECIAL CHARACTERISTIC TO BE FOLLOWED**  
**NOTE 1: DEBURR SHARP EDGES; MAX 0.4**

ACCORDING TO MQS  
MATERIAL

Drawn	Checked	Approved	Created Date	General geometrical tolerancing ISO 2768:	General surface finish $R_a$ :	Scale	Paper size
miguser	EG	VP	1990-09-08	m	3.2	-	A3
			Title				
			SOLDER 22U				
Article number		Design Type	Drawing number	Revision	Sheet		
		CD	CD000094	13	1 (1)		