

# B25T

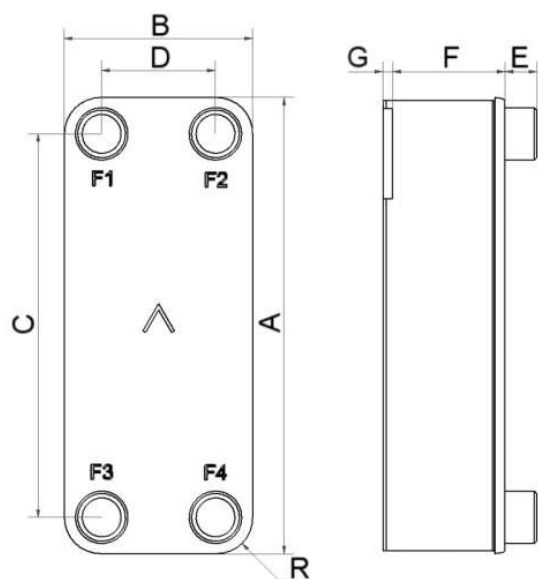
Le modèle B25T propose des solutions d'échange thermique efficace pour une large fourchette de capacités. La polyvalence et l'excellent transfert thermique de ce produit en font le choix idéal pour les applications eau/eau exigeantes et comme de très performance condenseurs.



## Spécifications de base

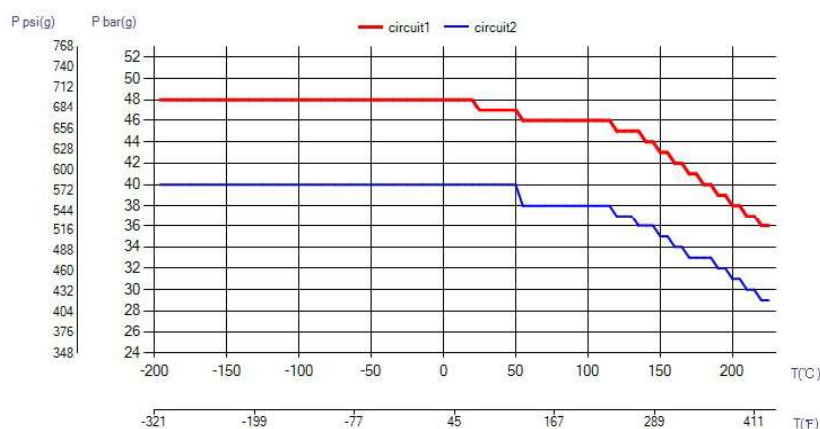
Nombre de plaques max. (NoP)	140
Débit volumétrique max.	9 m <sup>3</sup> /h (39.63 gpm)
Volume du canal	0.111/0.111 dm <sup>3</sup> (0.0039/0.0039 ft <sup>3</sup> )
Matières	Plaques en acier inoxydable 316, brasage cuivre
Poids sans les connexions	2.13+(0.1775*NoP) kg 4.69+(0.391*NoP) lb

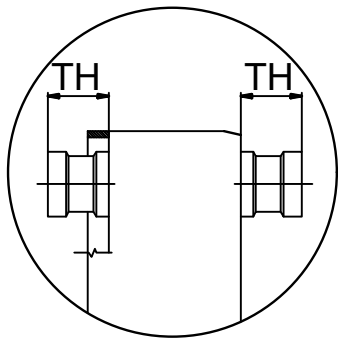
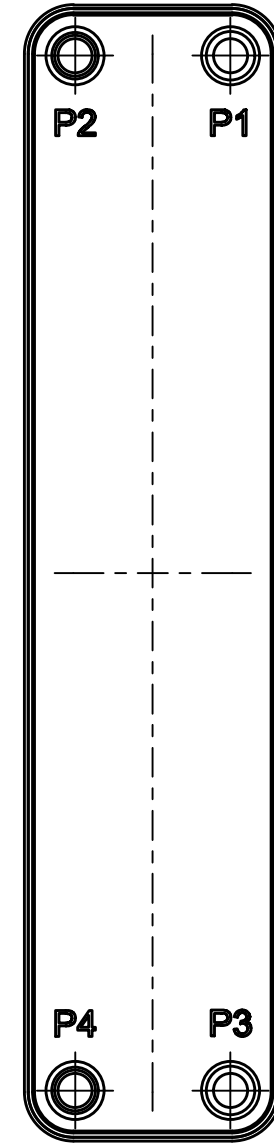
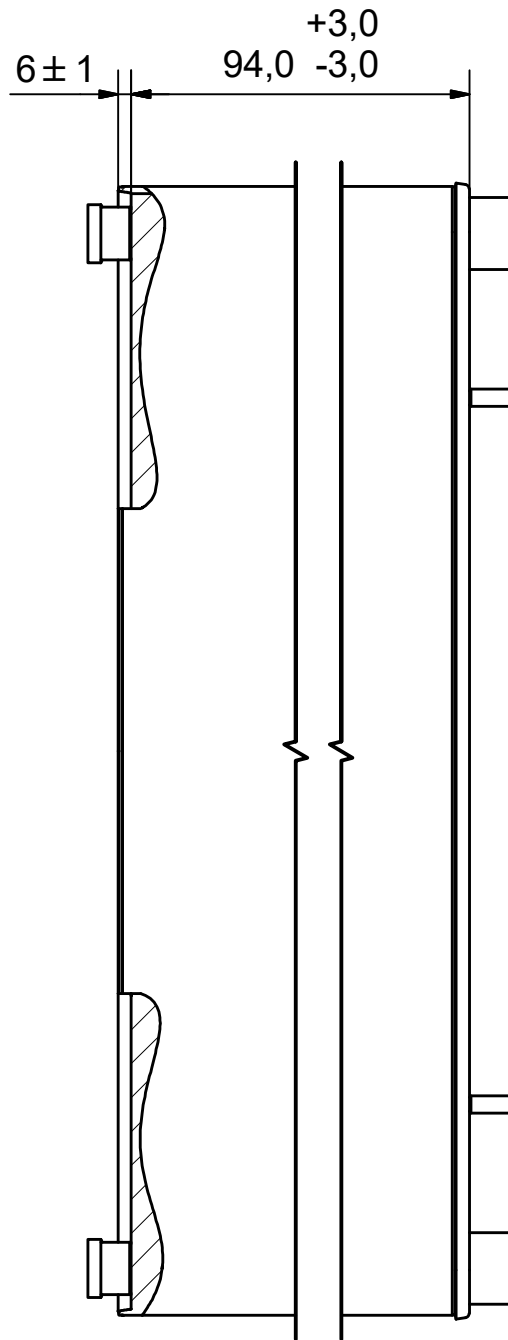
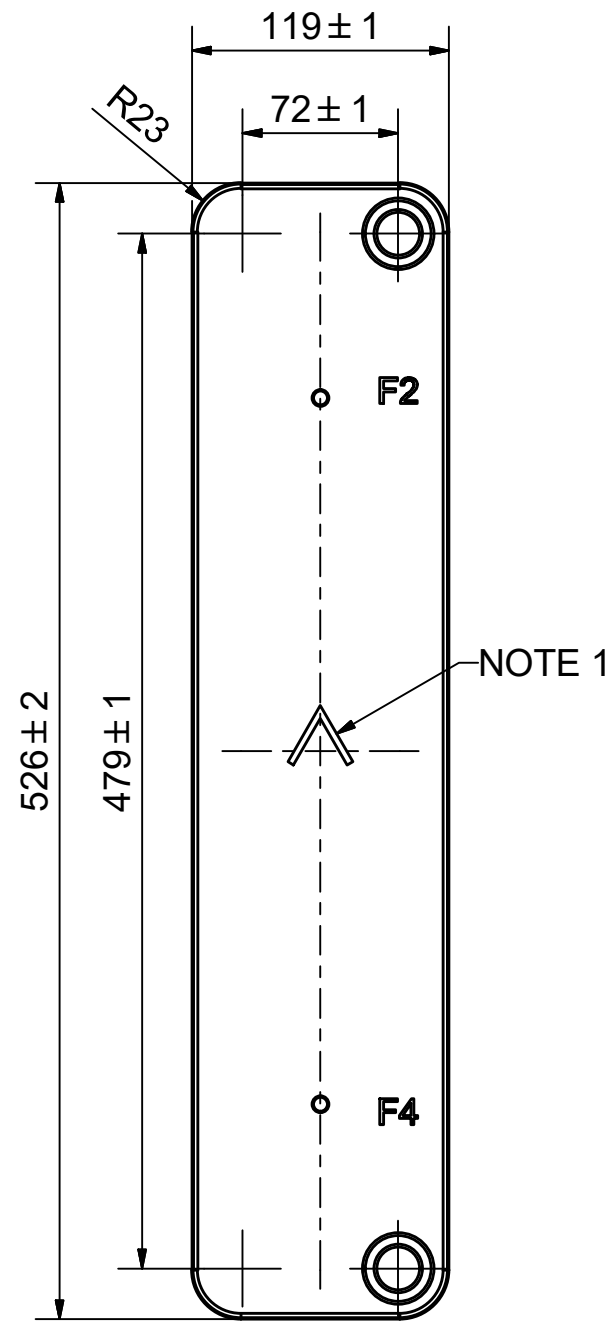
## Les dimensions standard



#	MM	IN
A	526	20.71
B	119	4.69
C	479	18.86
D	72	2.83
F	4.00+2.25*(NoP)	0.16+0.09*(NoP)
G	6	0.24
R	23	0.91
E_1	20	0.79

## PED pression / température





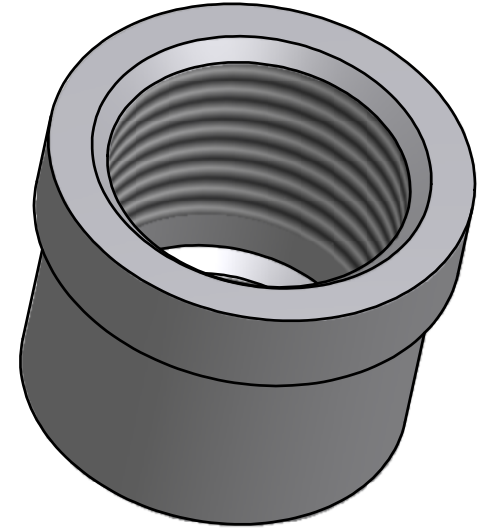
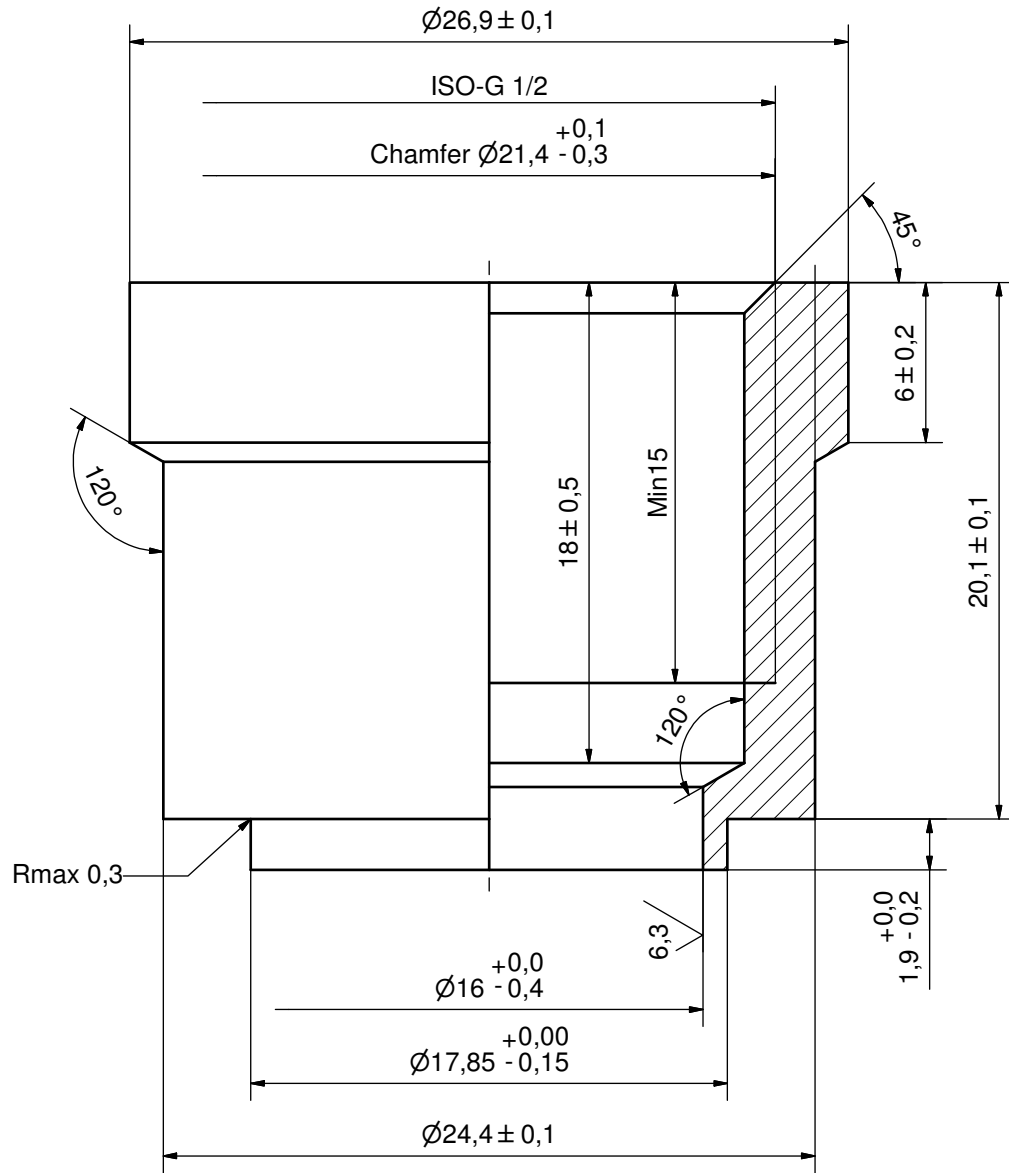
NOTE 1 ALTERNATE MARKING: STICKER OR STAMP

**AXINTRA**  
ÉCHANGEURS THERMIQUES

Pos	Article No	Title / Denomination, code, material, dimension etc	Drawing No./ref	Pos	Article No	Title / Denomination, code, material, dimension etc	Drawing No./ref
				P4	45130	ISO-G 1/2" INT, TH = 20,1	CD000037
F4	32566	ISO-G 1" A & SOLDER 22U, TH = 20,1	CD000806	P3	45072	SOLDER 22U, TH = 20,1	CD000094
F2	32566	ISO-G 1" A & SOLDER 22U, TH = 20,1	CD000806	P2	45130	ISO-G 1/2" INT, TH = 20,1	CD000037
F	21091	B25/27/28/80 STUD B F 2xCV327	CG250029	P1	45072	SOLDER 22U, TH = 20,1	CD000094

		<b>B25TH/1P-SC-M</b>	
		2019-04-24	AU
		Article/Configuration number	Drawing number
		14117-040	AU00483035

Rev No.	Alteration	Date	Checked	Approved
13	CHANGED MEASUREMENT OF CHAMFER AT THE TOP	2006/11/29	THE	PDM



© Company Confidential, Property of SWEP International AB

**AXINTRA**  
ÉCHANGEURS THERMIQUES

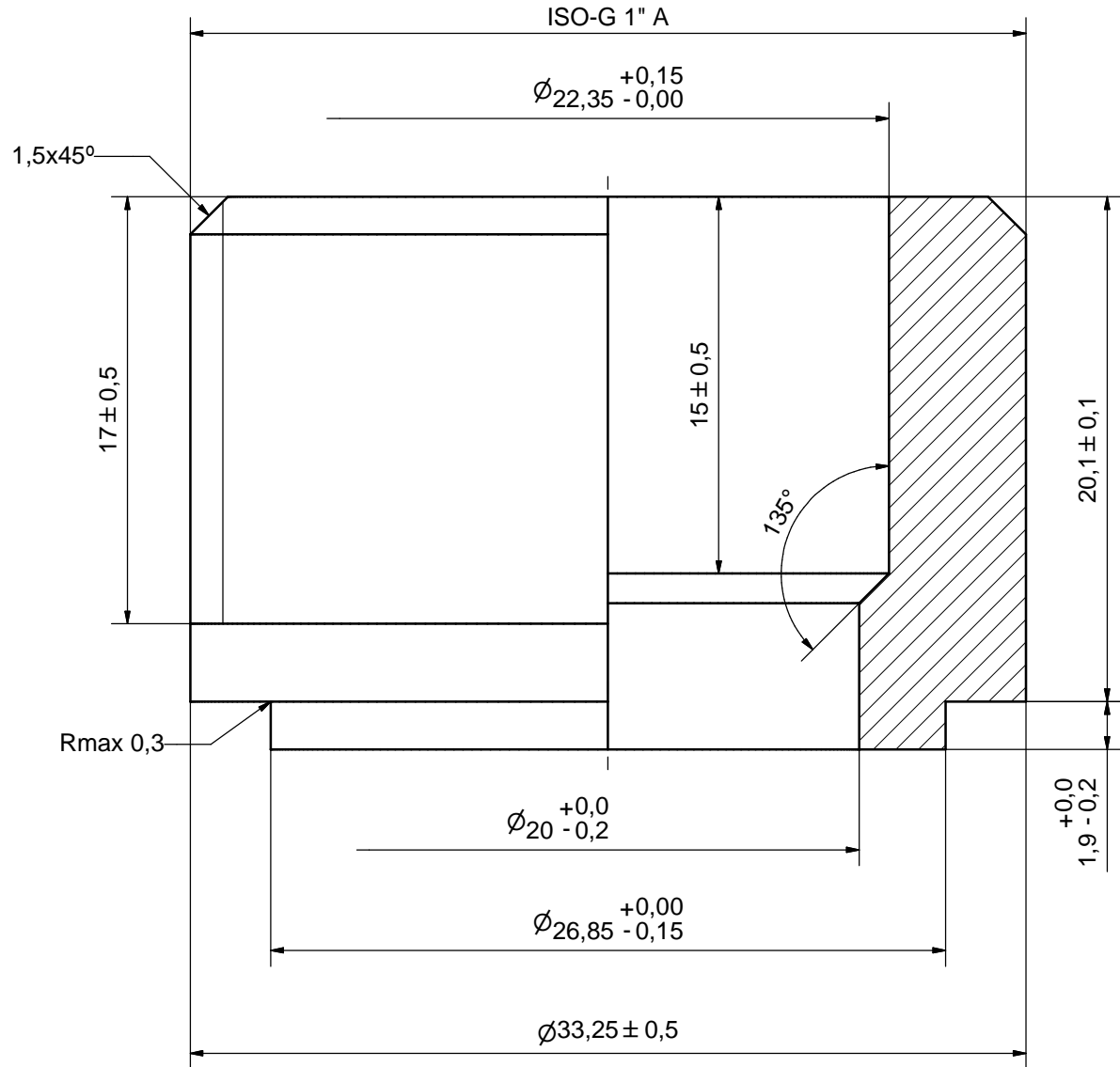
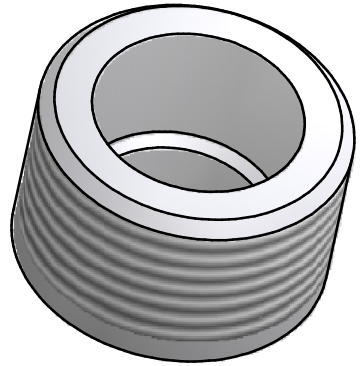
ACCORDING TO MQS  
MATERIAL

Drawn	Checked	Approved	Created Date	General geometrical tolerancing ISO 2768	General surface finish $R_a$	Scale
HR	TP	VP	1990/09/08	m	3.2	5:1
Title			ISO-G 1/2" INT			
Article number		Drawing number		Revision	Sheet	
-		CD000037		13	1 (1)	





Rev No.	Alteration	Date	Checked	Approved
1	CHANGED DENOMIATION	2007/05/28	ANL	PDM



ACCORDING TO MQS  
MATERIAL



Drawn	Checked	Approved	Created Date	General geometrical tolerancing ISO 2768	General surface finish $R_a$	Scale
THE	PDM	PDM	2006/05/09	m	3.2	5:1
Title <b>ISO-G 1" A &amp; SOLDER 22U</b>						
Article number -		Drawing number CD000806		Revision 1		Sheet 1 (1)

© Company Confidential, Property of SWEP International AB