

B25T

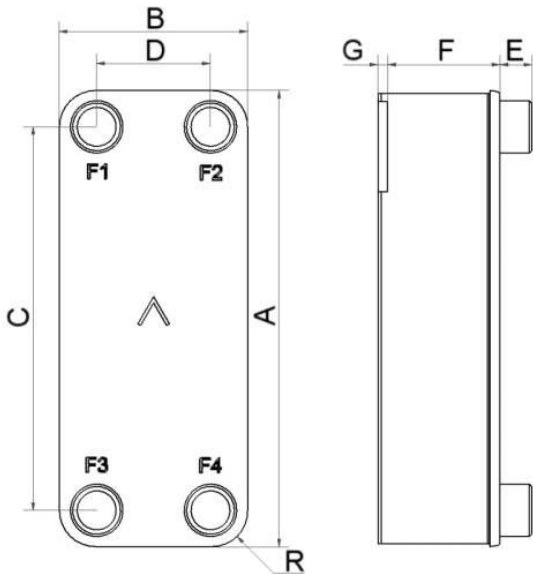
Le modèle B25T propose des solutions d'échange thermique efficace pour une large fourchette de capacités. La polyvalence et l'excellent transfert thermique de ce produit en font le choix idéal pour les applications eau/eau exigeantes et comme de très performance condenseurs.



Spécifications de base

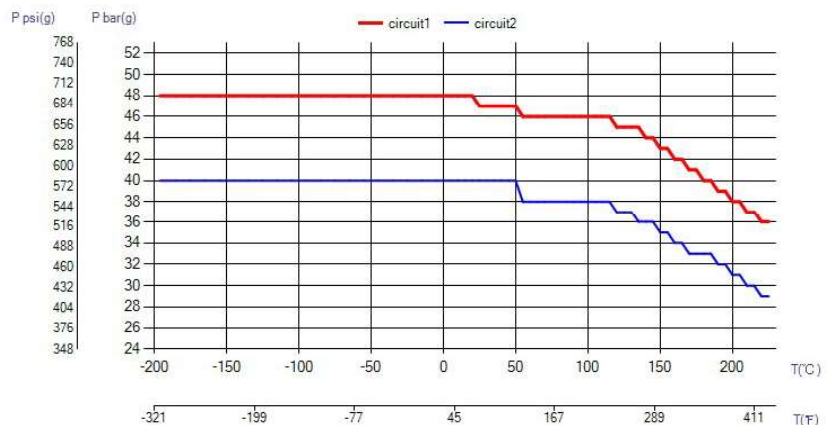
Nombre de plaques max. (NoP)	140
Débit volumétrique max.	9 m ³ /h (39.63 gpm)
Volume du canal	0.111/0.111 dm ³ (0.0039/0.0039 ft ³)
Matières	Plaques en acier inoxydable 316, brasage cuivre
Poids sans les connexions	2.13+(0.1775*NoP) kg 4.69+(0.391*NoP) lb

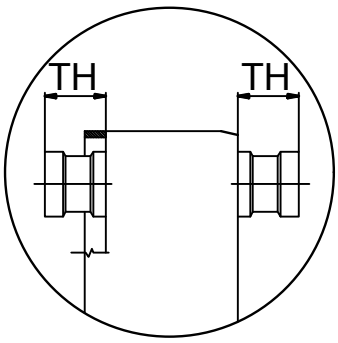
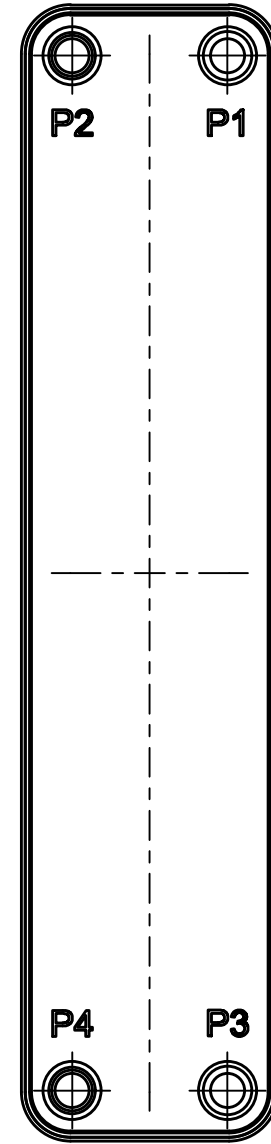
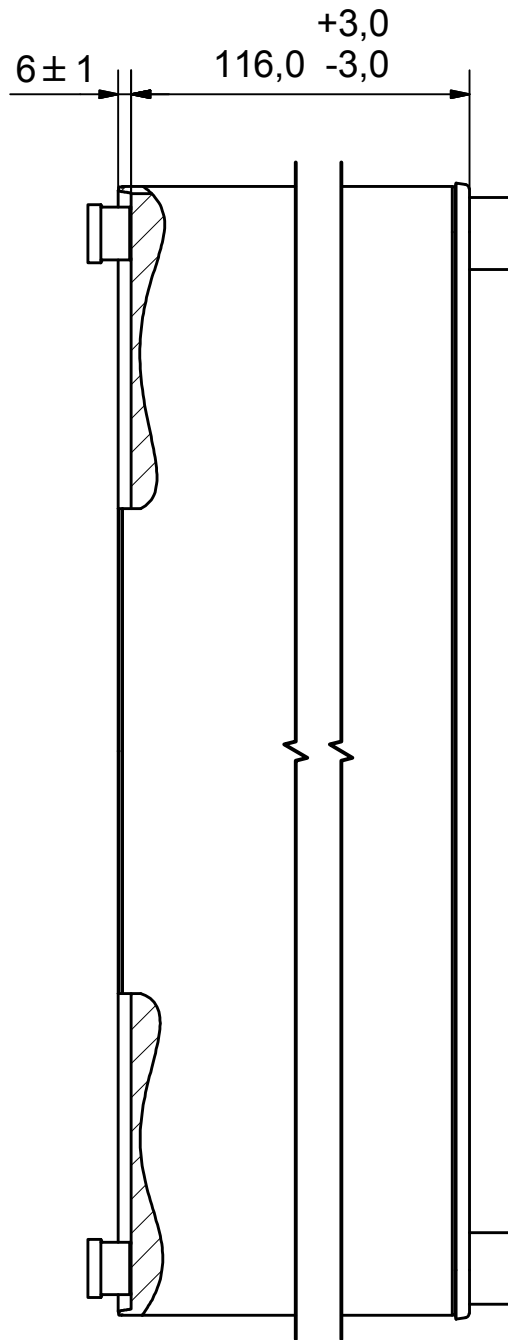
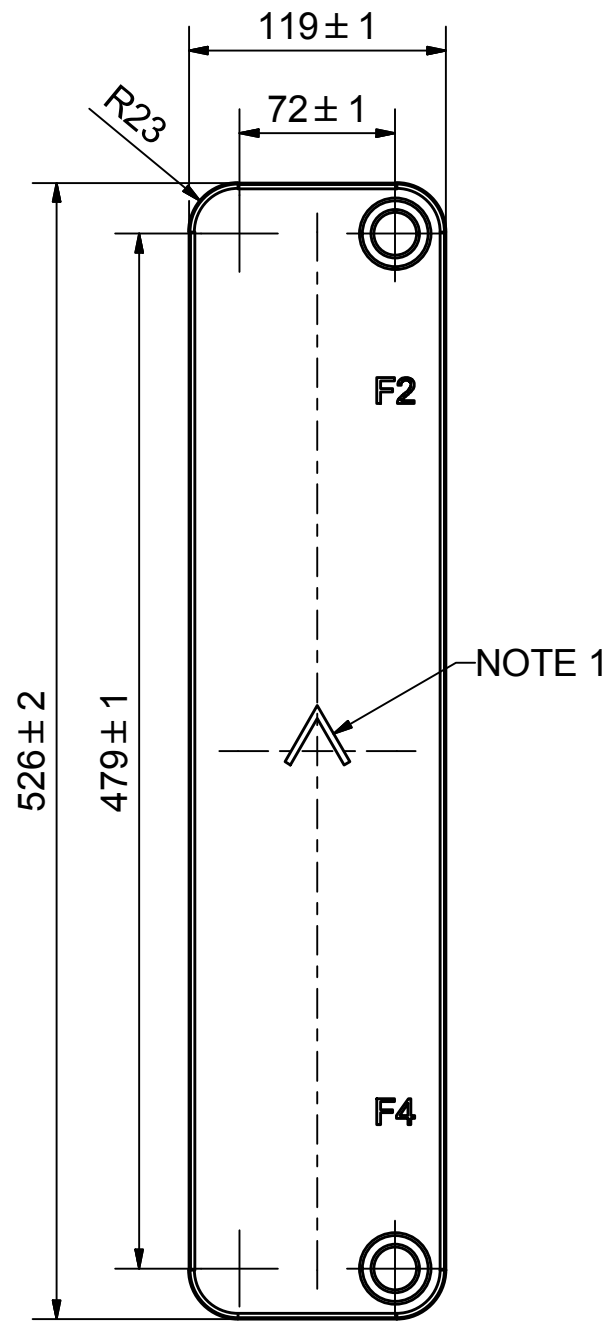
Les dimensions standard



#	MM	IN
A	526	20.71
B	119	4.69
C	479	18.86
D	72	2.83
F	4.00+2.25*(NoP)	0.16+0.09*(NoP)
G	6	0.24
R	23	0.91
E_1	20	0.79

PED pression / température





NOTE 1 ALTERNATE MARKING: STICKER OR STAMP

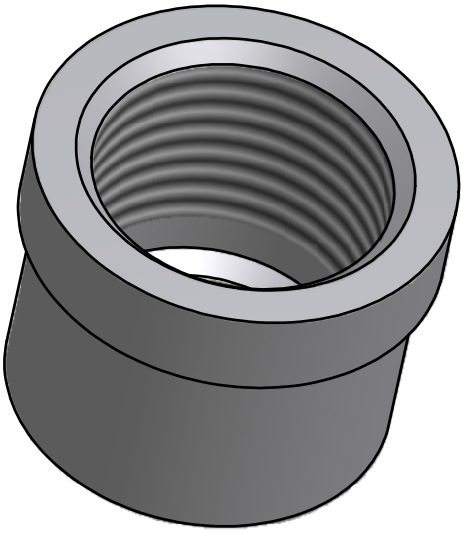
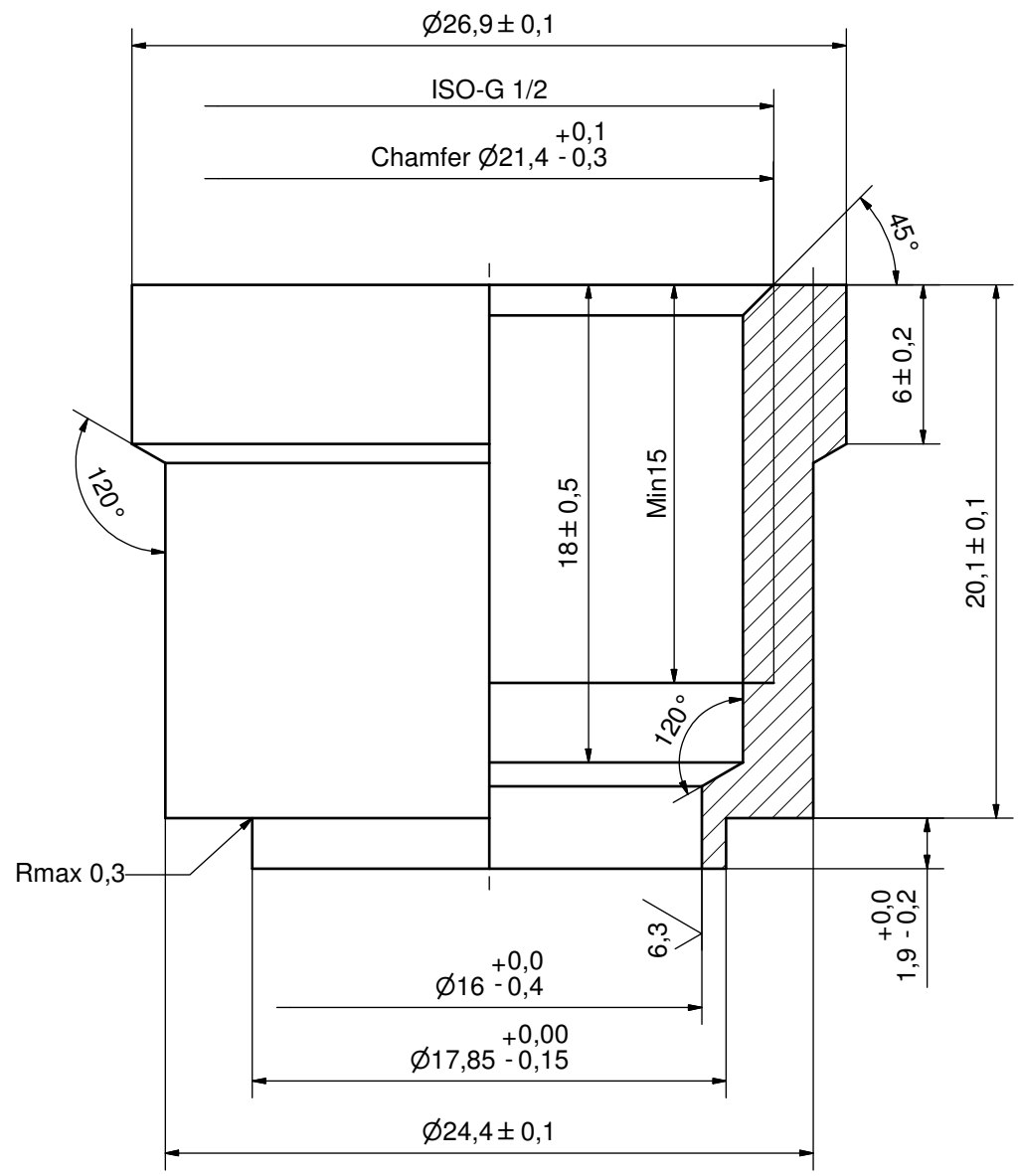
AXINTRA
ÉCHANGEURS THERMIQUES

Pos	Article No	Title / Denomination, code, material, dimension etc	Drawing No./ref	Pos	Article No	Title / Denomination, code, material, dimension etc	Drawing No./ref
F4	32566	ISO-G 1" A & SOLDER 22U, TH = 20,1	CD000806	P4	45130	ISO-G 1/2" INT, TH = 20,1	CD000037
F2	32566	ISO-G 1" A & SOLDER 22U, TH = 20,1	CD000806	P3	45072	SOLDER 22U, TH = 20,1	CD000094
				P2	45130	ISO-G 1/2" INT, TH = 20,1	CD000037
				P1	45072	SOLDER 22U, TH = 20,1	CD000094

Title		Created Date		Created By	
B25TH/1P-SC-M		2018-05-15		AU	
Article/Configuration number		Drawing number			
14117-050		AU00377844			



Rev No.	Alteration	Date	Checked	Approved
13	CHANGED MEASUREMENT OF CHAMFER AT THE TOP	2006/11/29	THE	PDM



© Company Confidential, Property of SWEP International AB

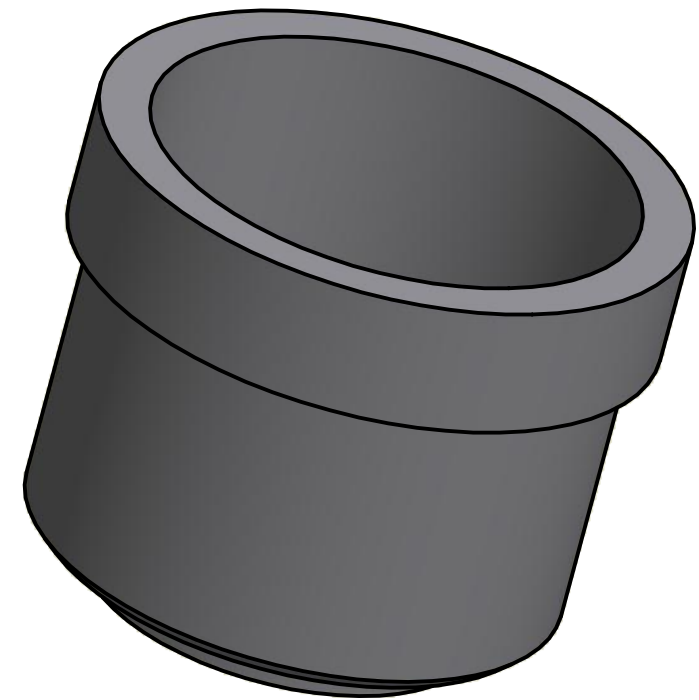
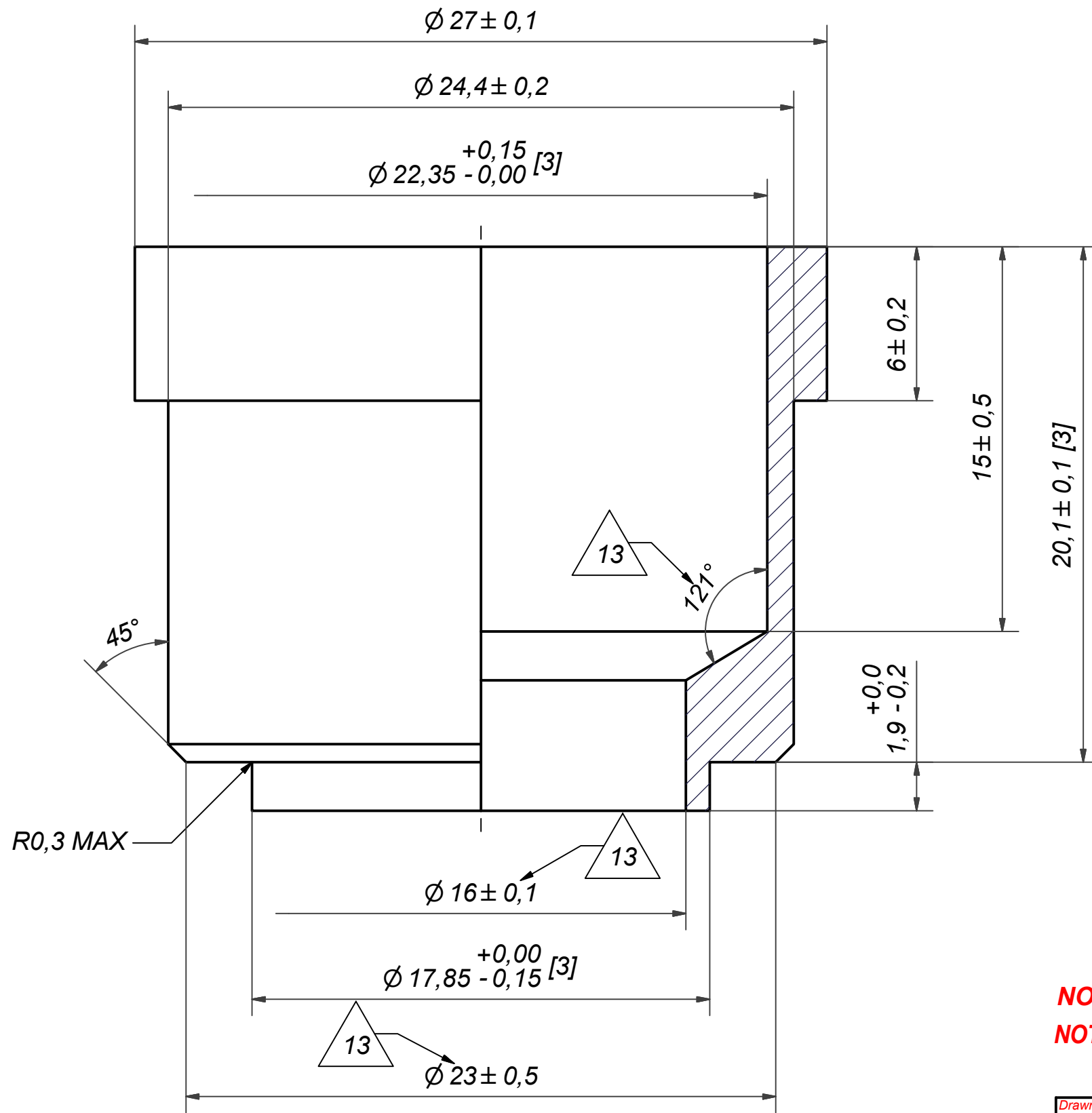
AXINTRA
ÉCHANGEURS THERMIQUES

ACCORDING TO MQS
MATERIAL

Drawn	Checked	Approved	Created Date	General geometrical tolerancing ISO 2768	General surface finish R_a	Scale
HR	TP	VP	1990/09/08	m	3.2	5:1
Title: ISO-G 1/2" INT						
Article number: -			Drawing number: CD000037		Revision: 13	Sheet: 1 (1)



Rev No	Alteration	Date	Checked	Approved
13	DESIGN CHANGE ACCORDING TO RD100699 AND ADDED MARK FOR CRITICAL CHARACTERISTICS	2013-11-05	INPKP	VP

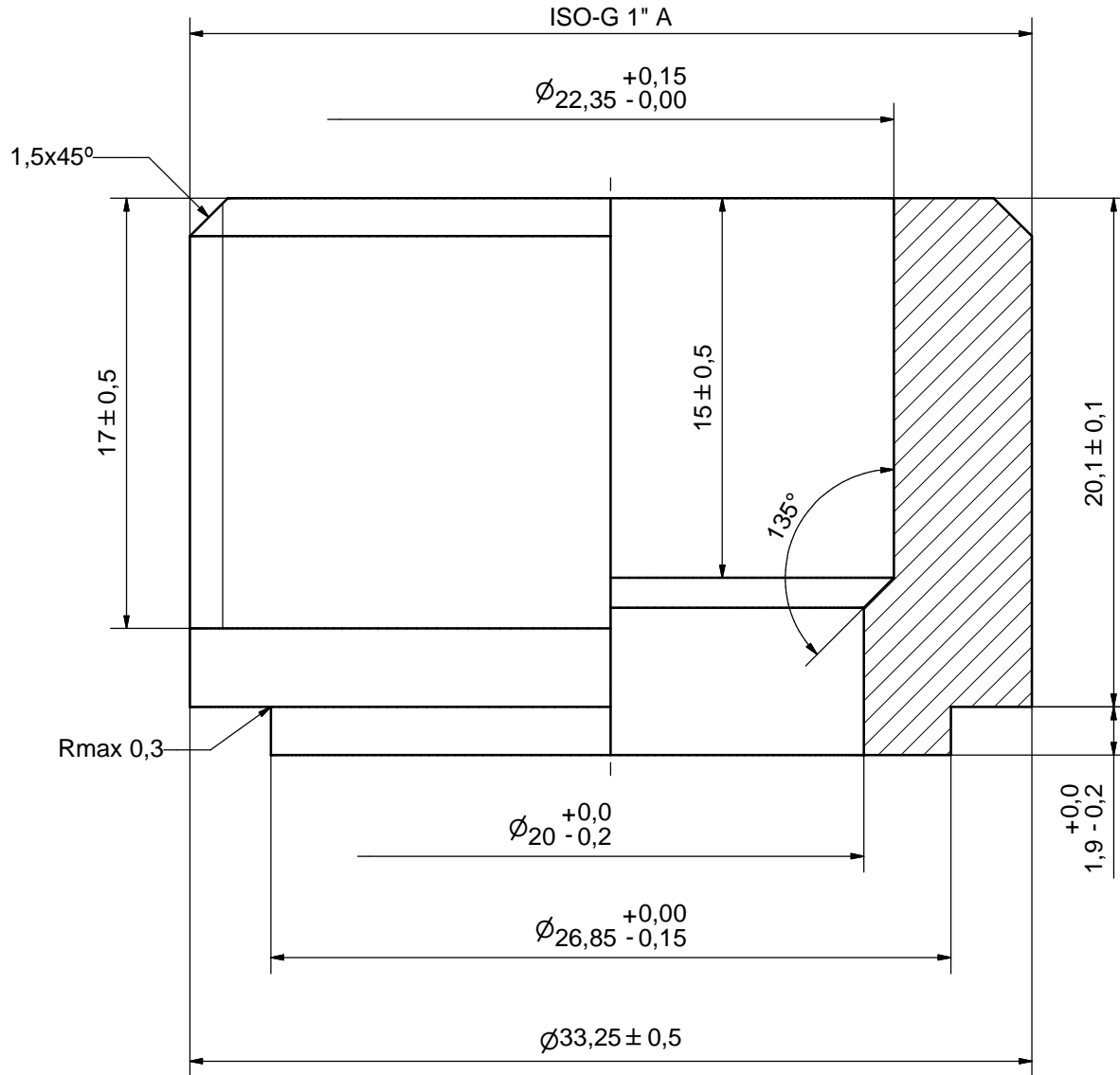
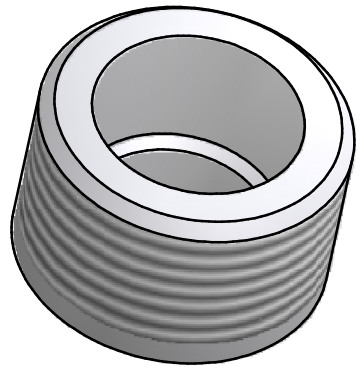


NOTE 2: [3] - CRITICAL/SPECIAL CHARACTERISTIC TO BE FOLLOWED
NOTE 1: DEBURR SHARP EDGES; MAX 0.4

ACCORDING TO MQS
MATERIAL

Drawn miguser	Checked EG	Approved VP	Created Date 1990-09-08	General geometrical tolerancing ISO 2768: m	General surface finish R_a : 3.2		Scale -	Paper size A3
 A DOVER COMPANY			Title SOLDER 22U					
Article number CD		Design Type CD		Drawing number CD000094		Revision 13		Sheet 1 (1)

Rev No.	Alteration	Date	Checked	Approved
1	CHANGED DENOMIATION	2007/05/28	ANL	PDM



ACCORDING TO MQS
MATERIAL



Drawn	Checked	Approved	Created Date	General geometrical tolerancing ISO 2768	General surface finish R_a	Scale
THE	PDM	PDM	2006/05/09	m	3.2	5:1
Title						
ISO-G 1" A & SOLDER 22U						
Article number		Drawing number		Revision		Sheet
-		CD000806		1		1 (1)