

B25T

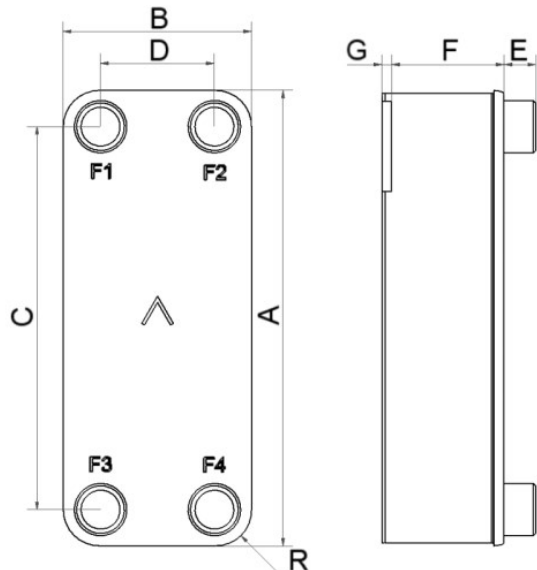
Le modèle B25T propose des solutions d'échange thermique efficace pour une large fourchette de capacités. La polyvalence et l'excellent transfert thermique de ce produit en font le choix idéal pour les applications eau/eau exigeantes et comme de très performance condenseurs.



Spécifications de base

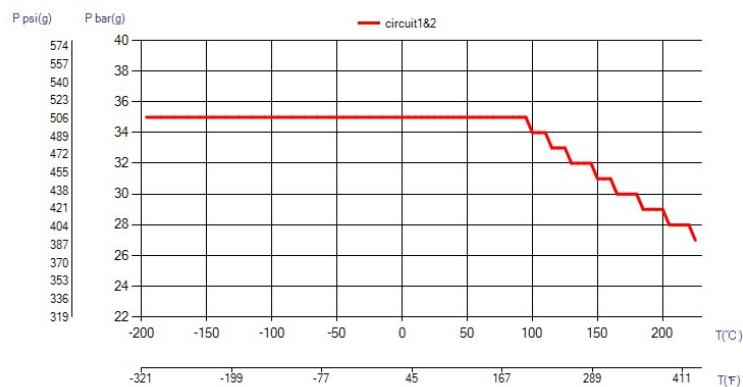
Nombre de plaques max. (NoP)	141
Débit volumétrique max.	9 m³/h (39.63 gpm)
Volume du canal	0.111/0.111 dm³ (0.0039/0.0039 ft³)
Matières	Plaques en acier inoxydable 316/316L, brasage cuivre
Poids sans les connexions	2.12+(0.1775*NoP) kg 4.68+(0.391*NoP) lb
Taille la taille des Particules (mm)	1

Les dimensions standard

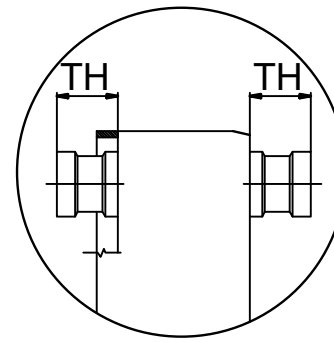
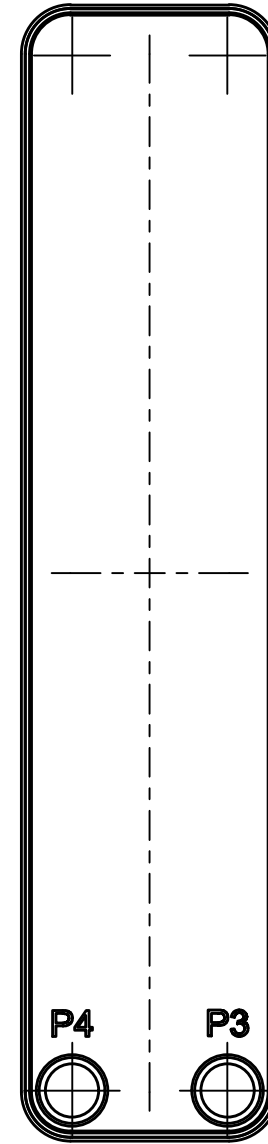
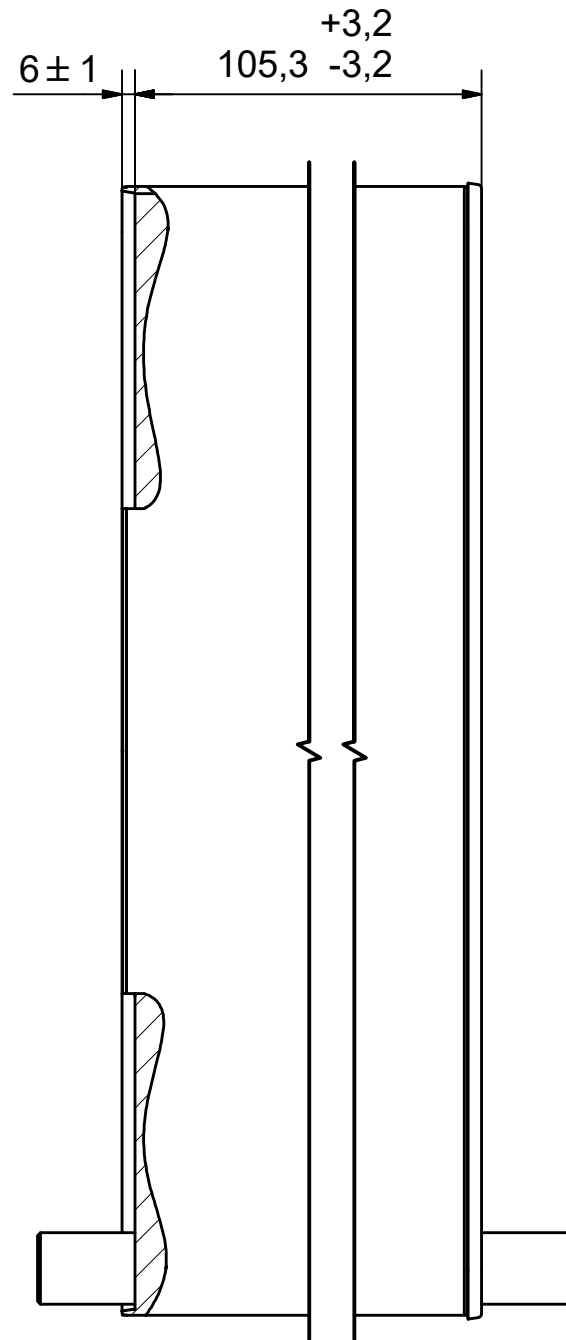
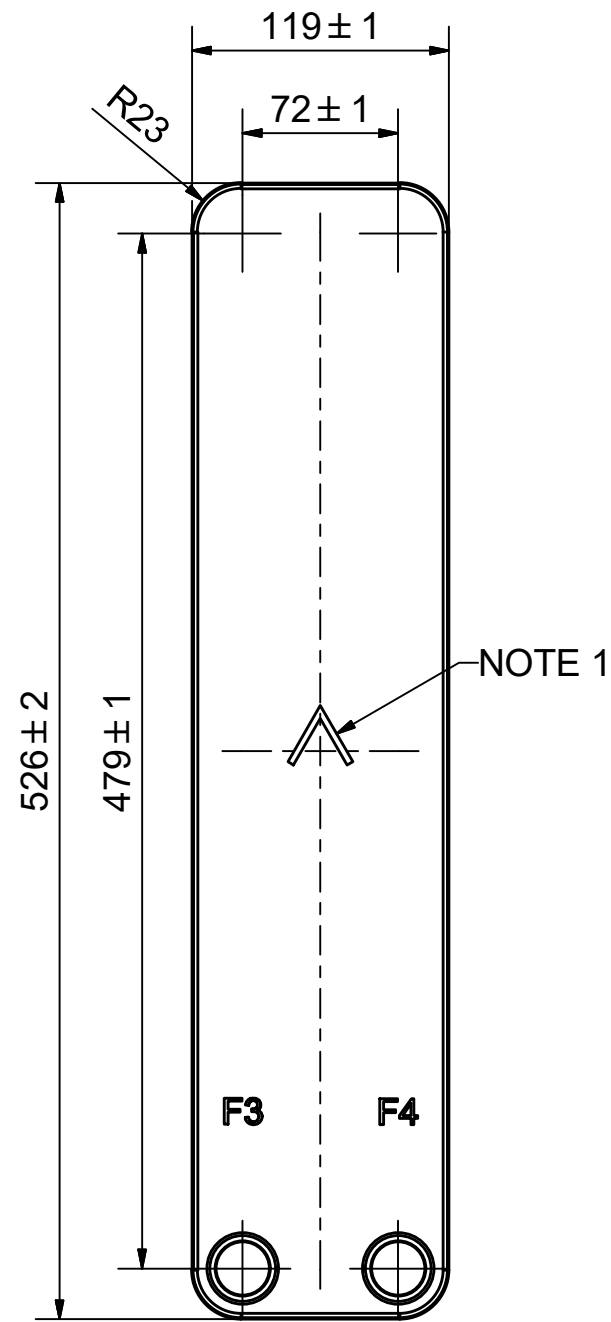


#	MM	IN
A	526	20.71
B	119	4.69
C	479	18.86
D	72	2.83
F	4,00+2,25*(NoP)	0.16+0.09*(NoP)
G	6	0.24
R	23	0.91
E_1	20	0.79
E_2	45	1.77



PED pression / température



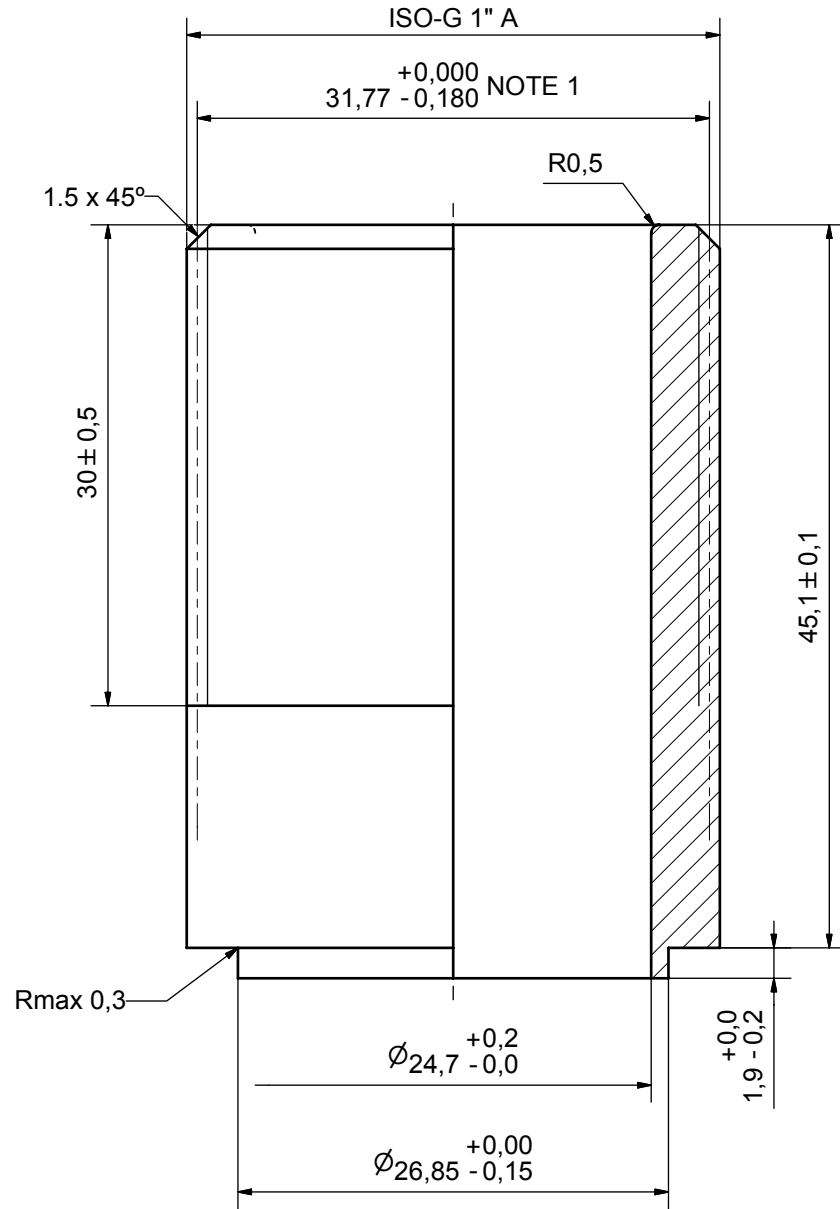
ÉCHANGEURS THERMIQUES



NOTE 1 ALTERNATE MARKING: STICKER OR STAMP

Title						B25THx45/2P-SC-S 2x1" / 2x1"					
F4	45051	ISO-G 1" A, TH = 45,1	CD000036	P4	45051	ISO-G 1" A, TH = 45,1	CD000036		Created Date	Created By	
F3	45051	ISO-G 1" A, TH = 45,1	CD000036	P3	45051	ISO-G 1" A, TH = 45,1	CD000036		2024-03-12	AU	
Pos	Article No	Title / Denomination, code, material, dimension etc	Drawing No./ref	Pos	Article No	Title / Denomination, code, material, dimension etc	Drawing No./ref		Article/Configuration number	Drawing number	
									03437090.0	AU00037682_03437090.0	


Rev No.	Alteration	Date	Checked	Approved
14	CHANGED TOLERANCE OF THREAD	2006/12/11	THE	PDM



© Company Confidential, Property of SWEF International AB

NOTE 1: ADDITIONAL REQUIREMENT ON ISO 228/1 THREAD
PERMISSIBLE TOLERANCE ON PITCH DIAMETER

ACCORDING TO MQS
MATERIAL

Drawn EG	Checked HR	Approved BOS	Created Date 1990/09/08	General geometrical tolerancing ISO 2768 m	General surface finish R_a 3.2	Scale 3:1
			Title ISO-G 1" A			
Article number -			Drawing number CD000036		Revision 14	Sheet 1 (2)