

B35

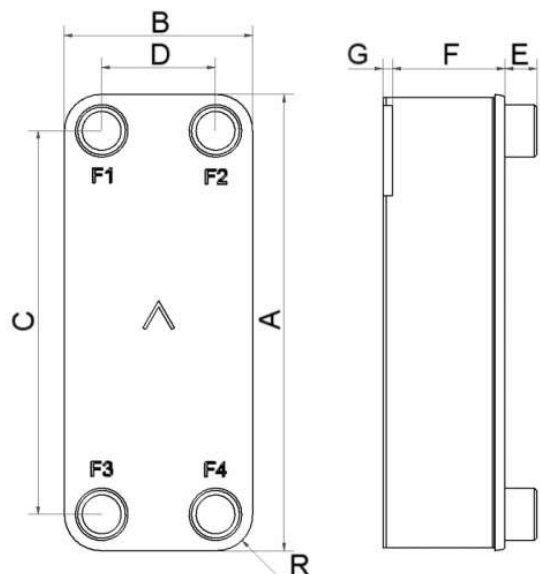
Le B35 est le produit idéal pour de nombreuses applications : chauffage urbain, récupération de chaleur, cogénération, refroidissement d'huile de transmission et de moteur. Il est le choix parfait pour bénéficier de transferts de chaleur efficaces et de faibles pertes de charges dans des systèmes de conduites jusqu'à 2 pouces et des débits d'eau jusqu'à 27 m³/h (118.8 gpm).



Spécifications de base

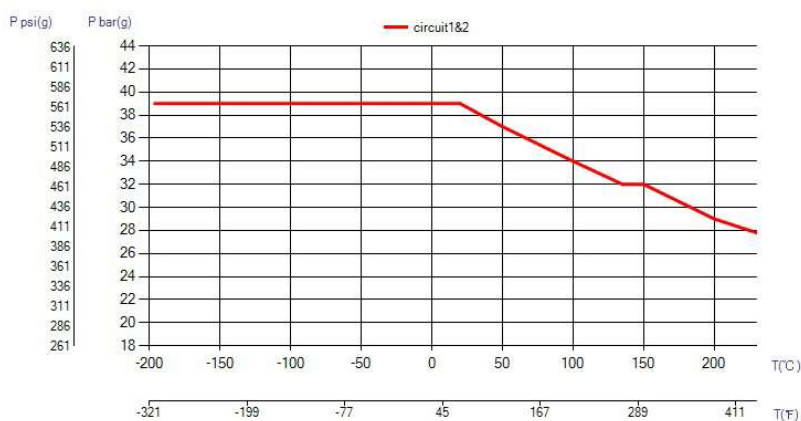
Nombre de plaques max. (NoP)	250
Débit volumétrique max.	27,4 m ³ /h (17.61 gpm)
Volume du canal	0.179/0.179 dm ³ (0.0063/0.0063 ft ³)
Matières	Plaques en acier inoxydable 316, brasage cuivre
Poids sans les connexions	905.00+(0.34*NoP) kg 1995.16+(74.956*NoP) lb

Les dimensions standard

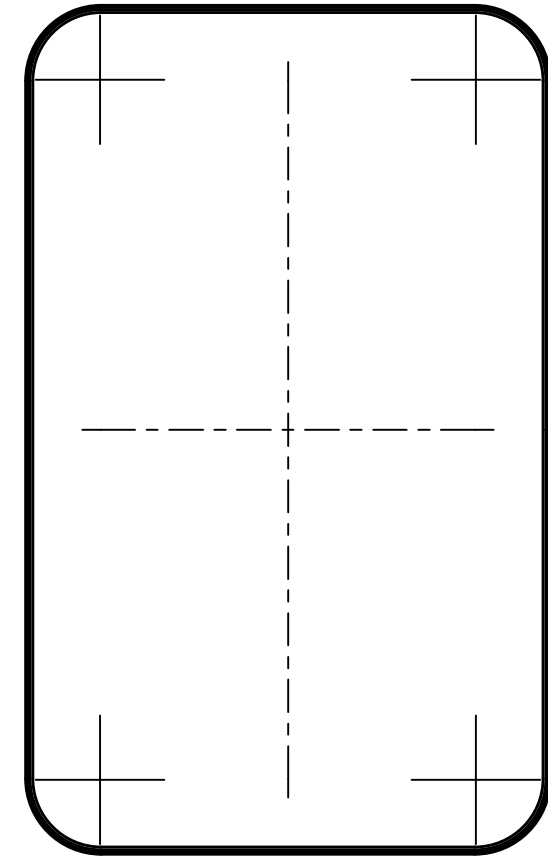
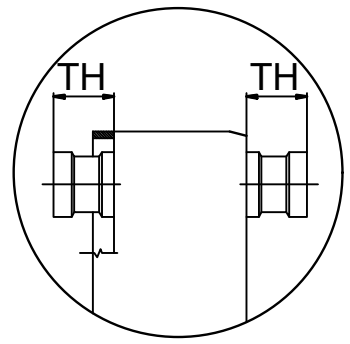
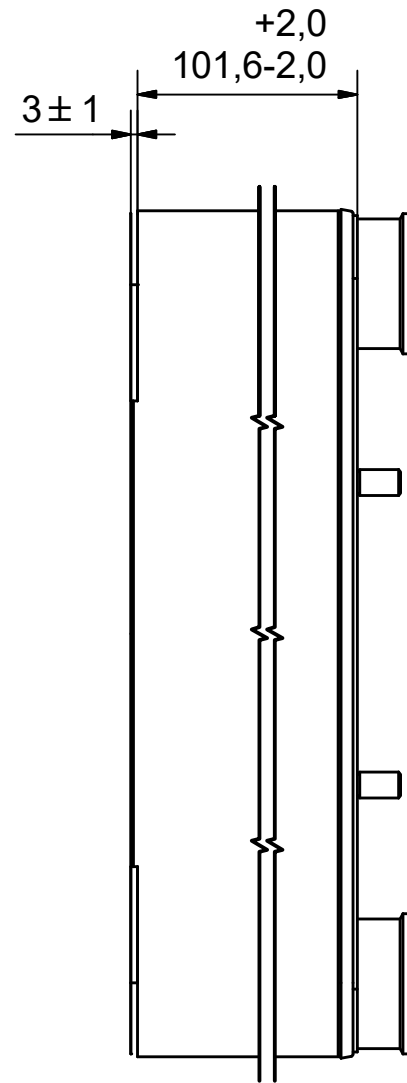
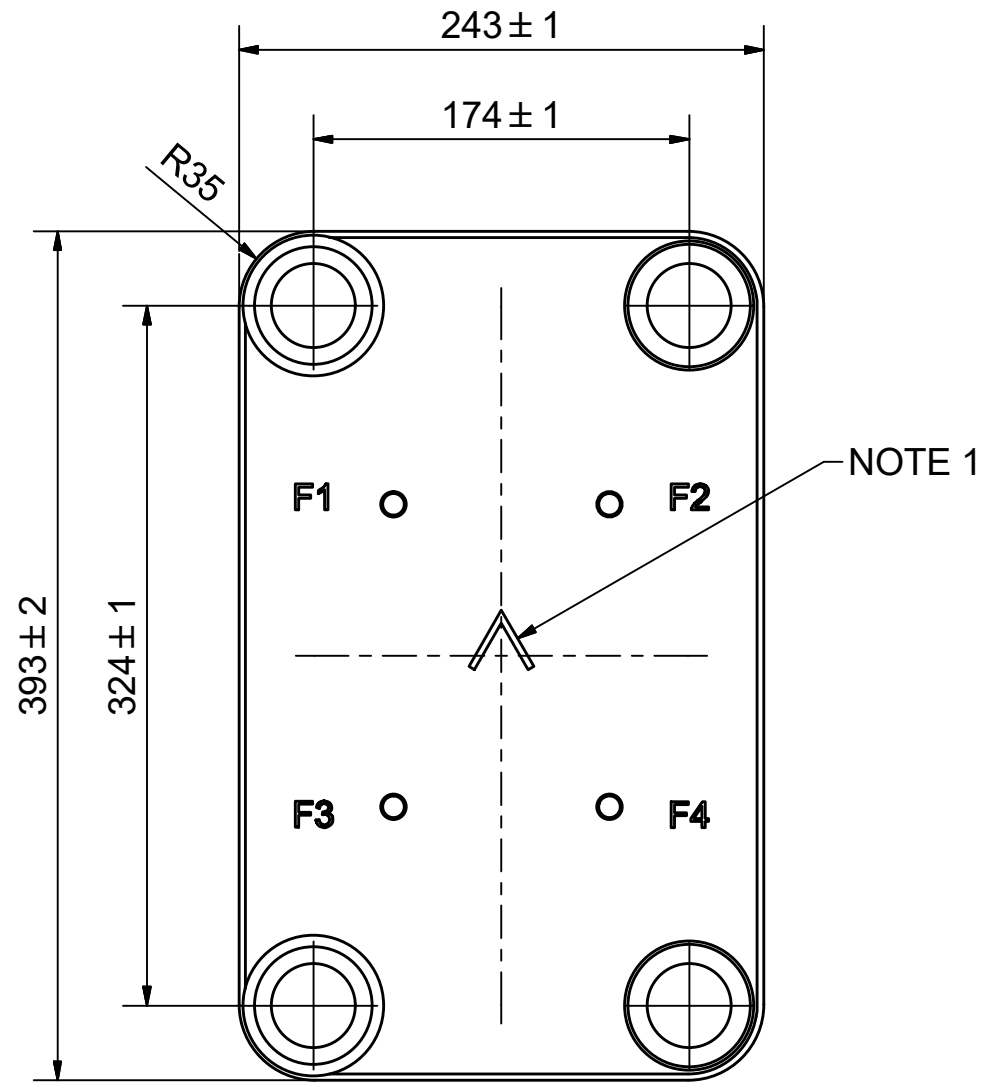


#	MM	N
A	393	15.47
B	243	9.57
C	324	12.76
D	174	6.85
F	8.00+2.34*(NoP)	0.31+0.09*(NoP)
G	3	0.12
R	35	1.38
E_1	27	1.06

PED pression / température





ÉCHANGEURS THERMIQUES



AXINTRA
ÉCHANGEURS THERMIQUES

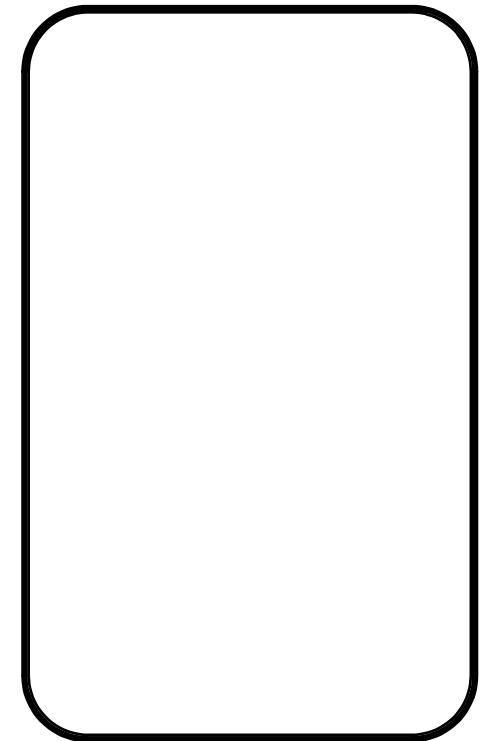
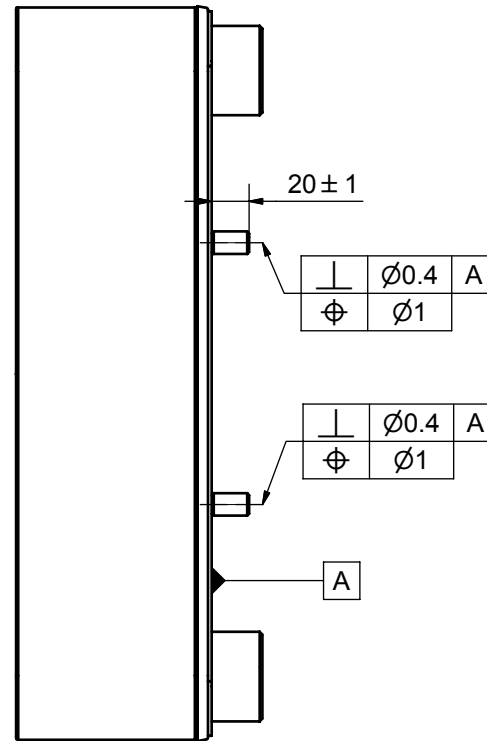
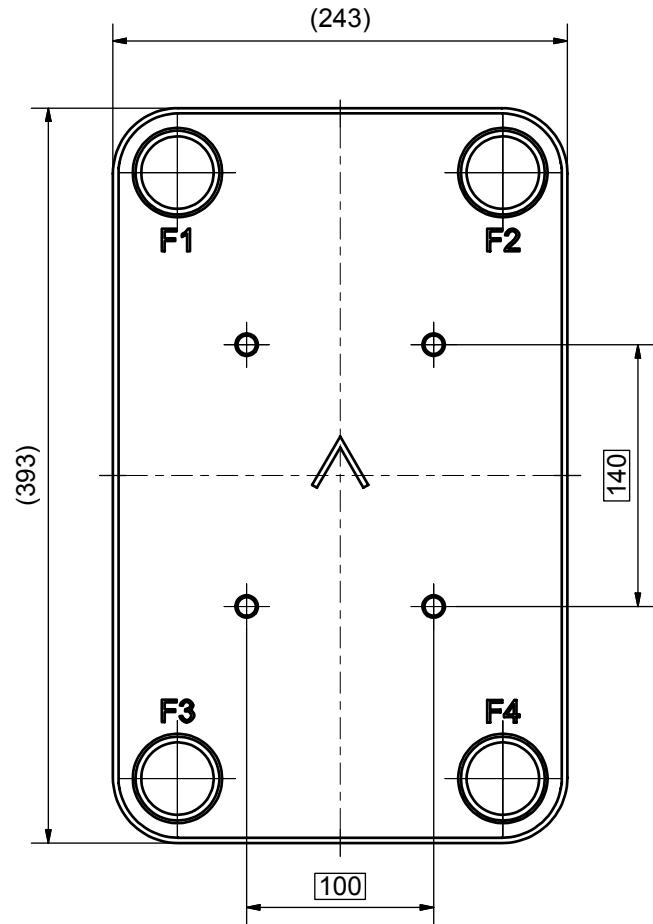
NOTE 1 ALTERNATE MARKING: STICKER OR STAMP

F4	45312	ISO-G 2 A, TH = 27,1	CD000049
F3	46211	SOLDER ø54,3, TH = 27,1	CD000329
F2	45312	ISO-G 2 A, TH = 27,1	CD000049
F1	46211	SOLDER ø54,3, TH = 27,1	CD000329
F	21112	B35 BOLT LOC F 4x C140x100	CG350001_1


Title B35Hx40/1P-SC-S 2x54.3+2x2"			
 A DOVER COMPANY	Created Date 2023-02-09	Created By AU	
	Article/Configuration number 0110458.0	Drawing number AU00733432_0110458.0	

Pos	Article No	Title / Denomination, code, material, dimension etc	Drawing No./ref	Pos	Article No	Title / Denomination, code, material, dimension etc	Drawing No./ref
-----	------------	-----------------------------------------------------	-----------------	-----	------------	-----------------------------------------------------	-----------------

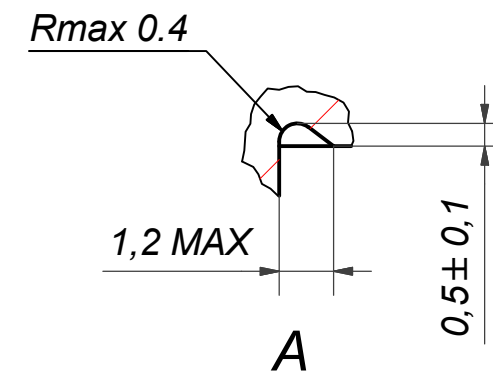
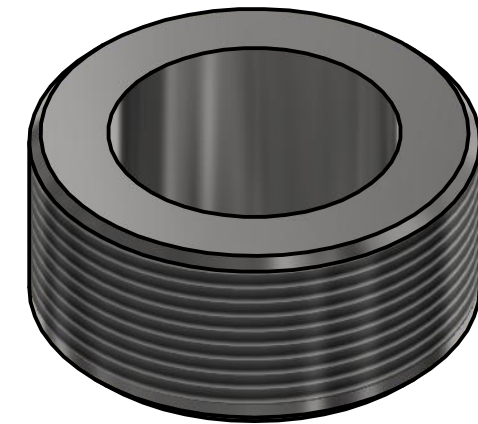
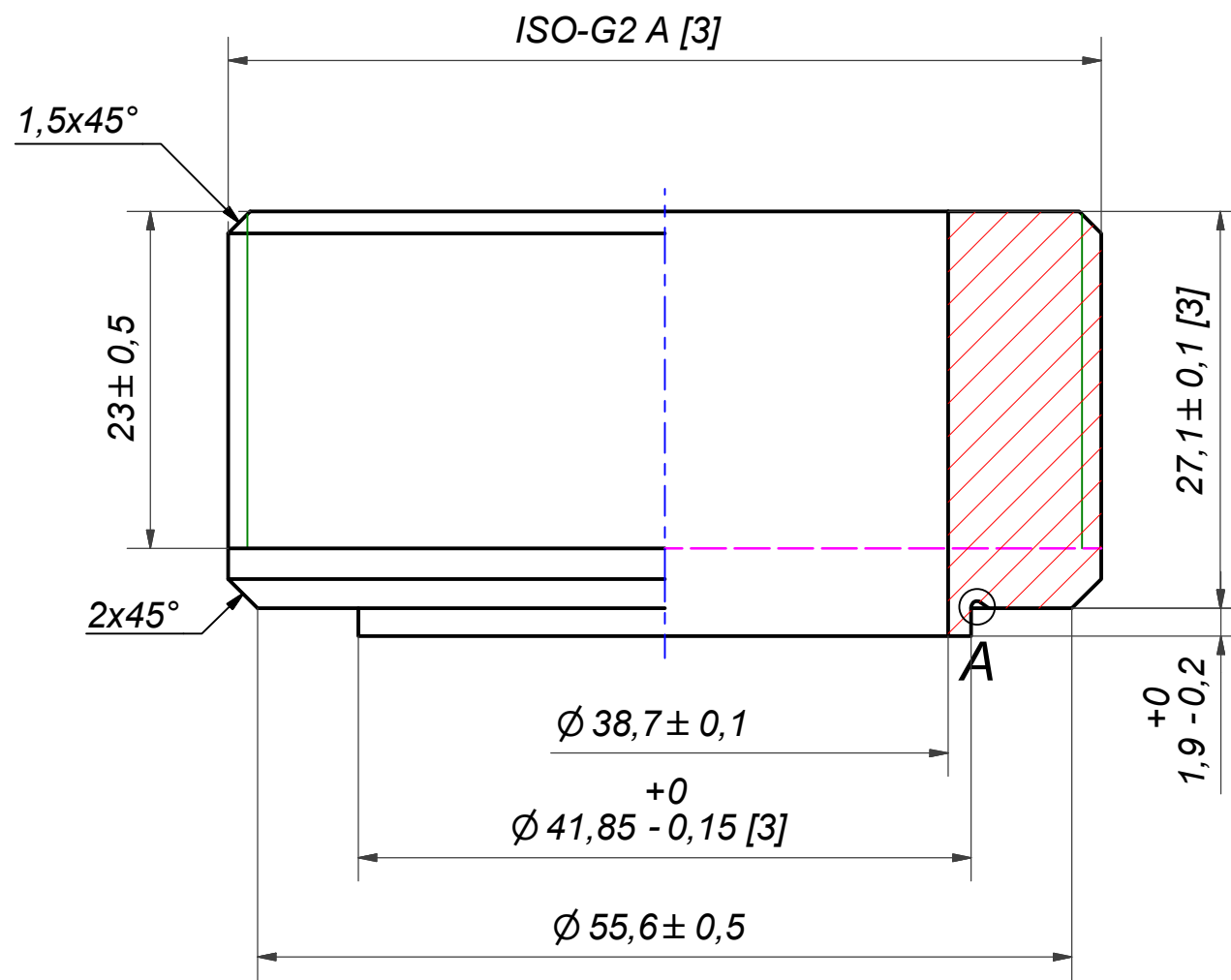
Rev No.	Alteration	Date	Checked	Approved
2	REDRAWN IN INVENTOR	2004/12/10	PDM	PDM



© Company Confidential, Property of SWEP International AB

1	4	STUD BOLT M12 x 20, ART. NO. 45095				M12 x 20
ITE	QTY	DESCRIPTION				Drawing No.
Drawn	Checked	Approved	Created Date	General geometrical tolerancing ISO 2768	General surface finish R_a	Scale
JA	PDM	PDM	2004/10/12	m	3.2	1:1
			Title B35 BOLT LOC F 4x C140x100			
Article number 21112		Drawing number CG350001		Revision 2	Sheet 1 (1)	
						

Rev No	Alteration	Date	Checked	Approved
10	ECN-000223: update of thread designation	2022-02-10	10083926	PDM

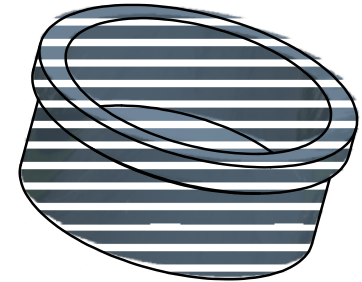
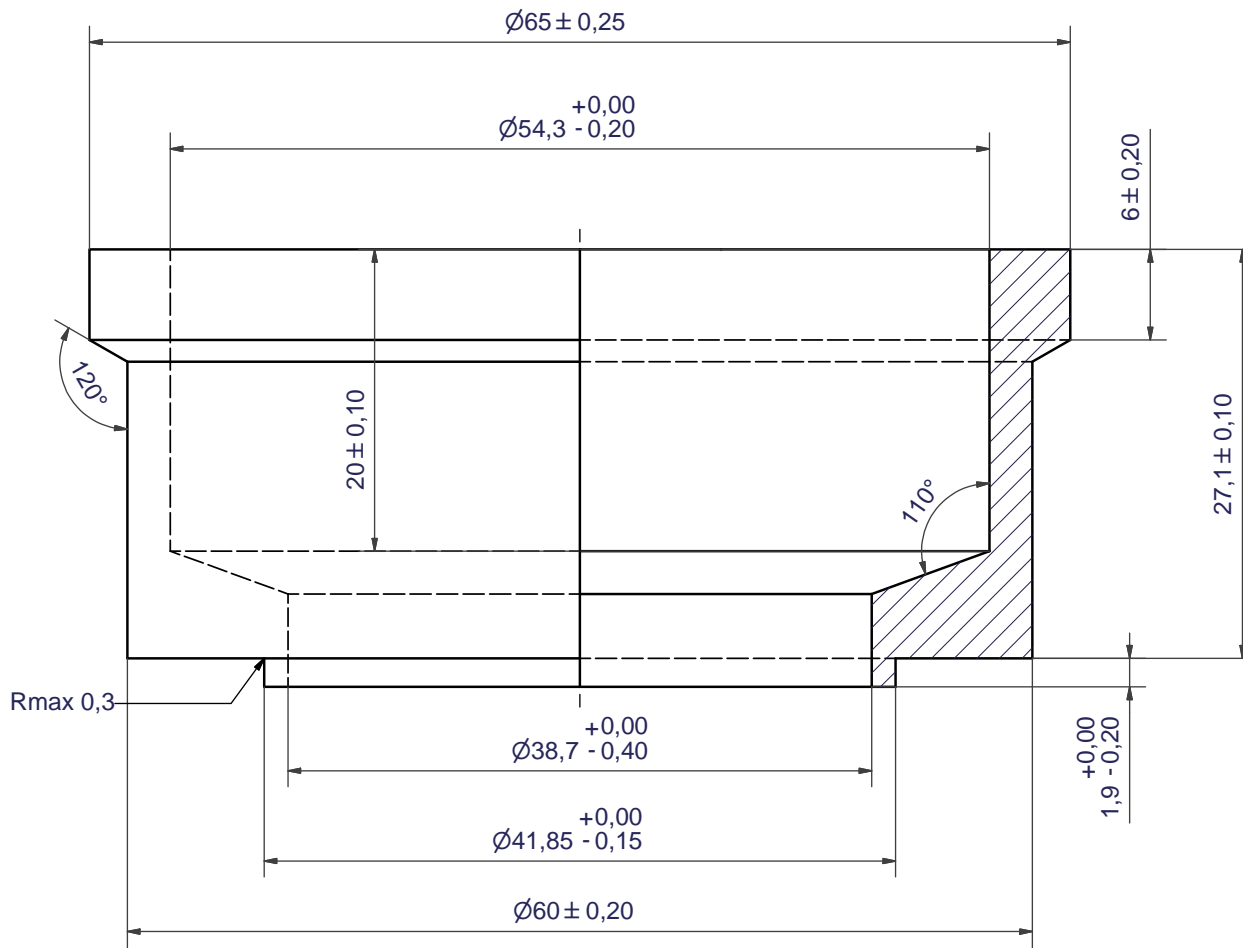


NOTE 2: [3] - CRITICAL/SPECIAL CHARACTERISTIC TO BE FOLLOWED
NOTE 1: DEBURR SHARP EDGES; MAX 0.4

ACCORDING TO MQS
MATERIAL

Drawn	Checked	Approved	Created Date	General geometrical tolerancing ISO 2768:	General surface finish R_a :	Scale	Paper size		
miguser	PDM	PDM	1991-02-10	mK	3.2	-	A3		
			Title					ISO-G 2 A	
			Article number	Design Type	Drawing number	Revision	Sheet		
			CD	CD000049	10	1 (1)			


Rev No.	Alteration	Date	Checked	Approved
6	Changed ø65 dim tolerance to ±0,25	2010/01/15	ANO	PDM



SHARP EDGES DEBURRED MAX 0,4

ACCORDING TO MQS

MATERIAL

Drawn	Checked	Approved	Created Date	General geometrical tolerancing ISO 2768	Surface finish R _a	Scale
JA	EMS	BOS	1997-04-03	m	3.2	-
			SOLDER ø54,3			
Article number		Drawing number		Revision	Sheet	
-		CD000329		6	1 (1)	