

B35TM0

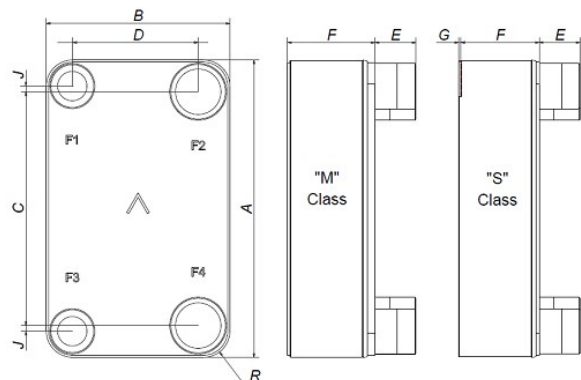
Le B35T est le produit idéal pour de nombreuses applications : chauffage urbain, récupération de chaleur, cogénération, refroidissement d'huile de transmission et de moteur. Il est le choix parfait pour bénéficier de transferts de chaleur efficaces et de faibles pertes de charges dans des systèmes de conduites jusqu'à 2 pouces et des débits d'eau jusqu'à 27 m³/h (118.8 gpm).



Spécifications de base

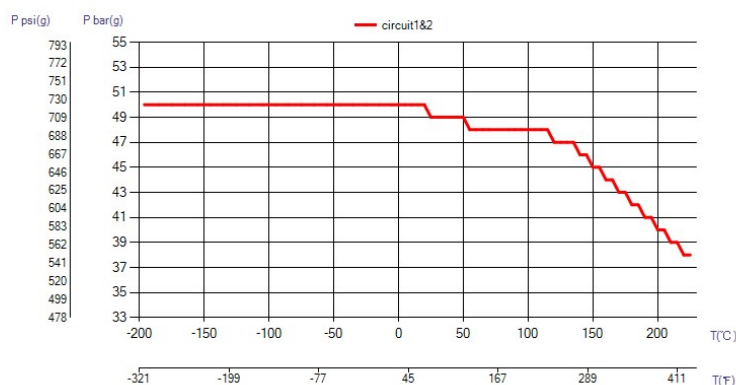
Nombre de plaques max. (NoP)	260
Débit volumétrique max.	27 m ³ /h (118.88 gpm)
Volume du canal	0.18/0.18 dm ³ (0.0064/0.0064 ft ³)
Matières	Plaques en acier inoxydable 316, brasage cuivre
Poids sans les connexions	15.76+(0.256*NoP) kg 34.73+(0.564*NoP) lb

Les dimensions standard



#	MM	IN
A	393	15.47
B	243	9.57
C	324	12.76
D	174	6.85
F	22.00+2.26*(NoP)	0.87+0.09*(NoP)
G	0	0
R	35	1.38
E_1	27	1.06

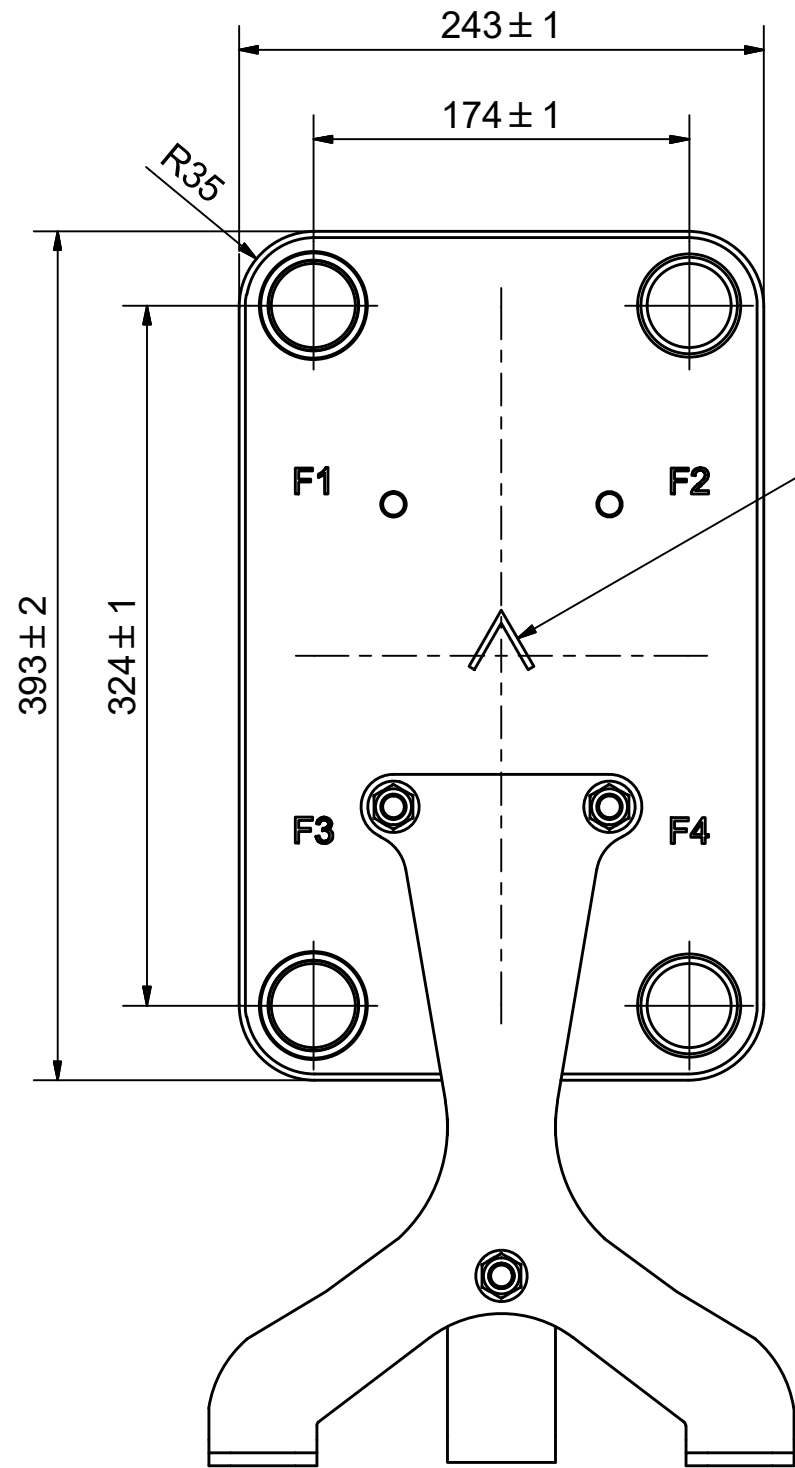
PED pression / température



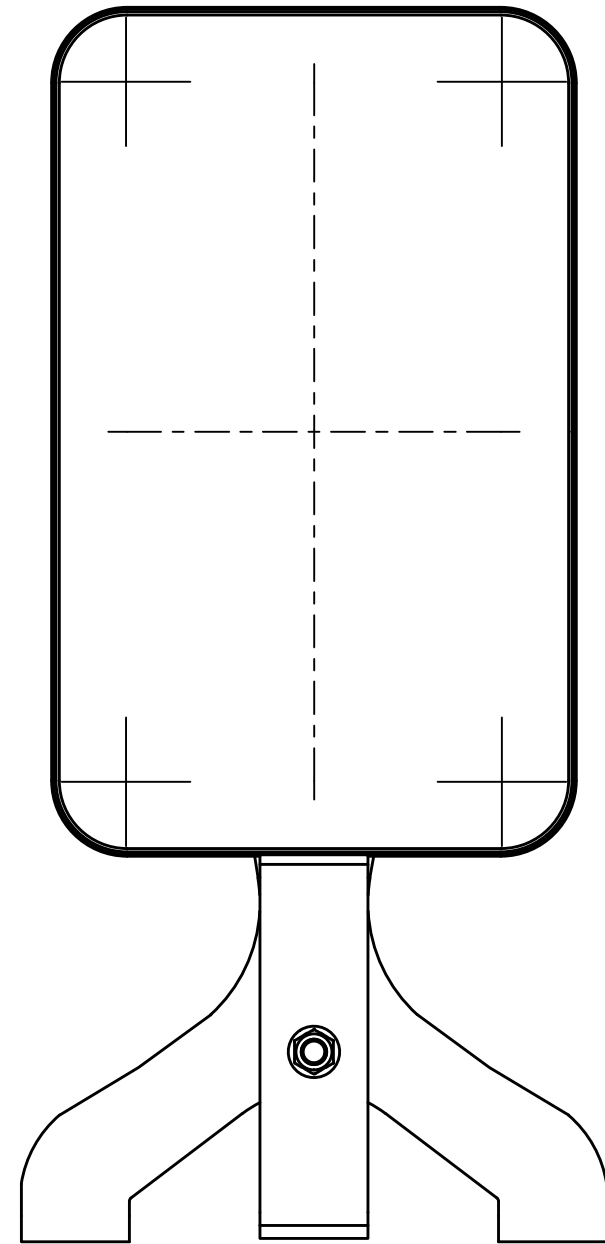
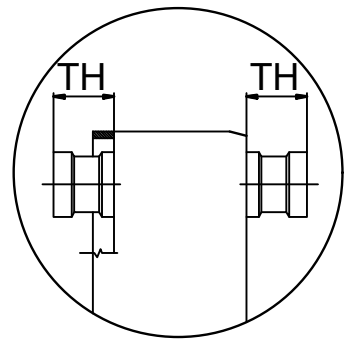
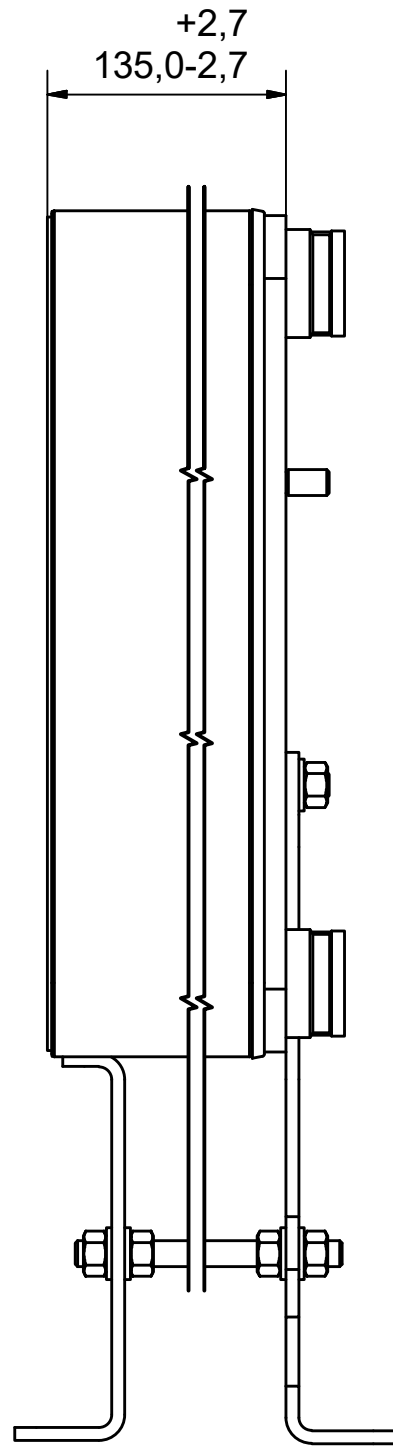
AXINTRA

ÉCHANGEURS THERMIQUES

© Company Confidential, Property of SWEP International AB





NOTE 1



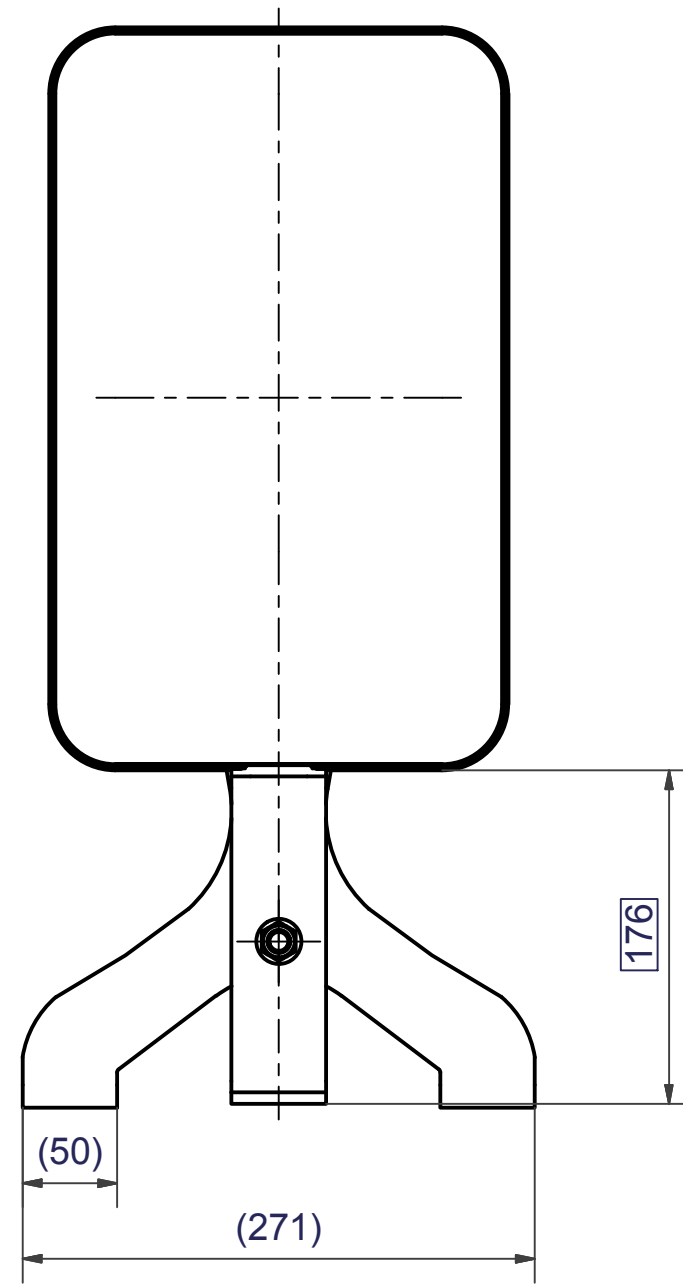
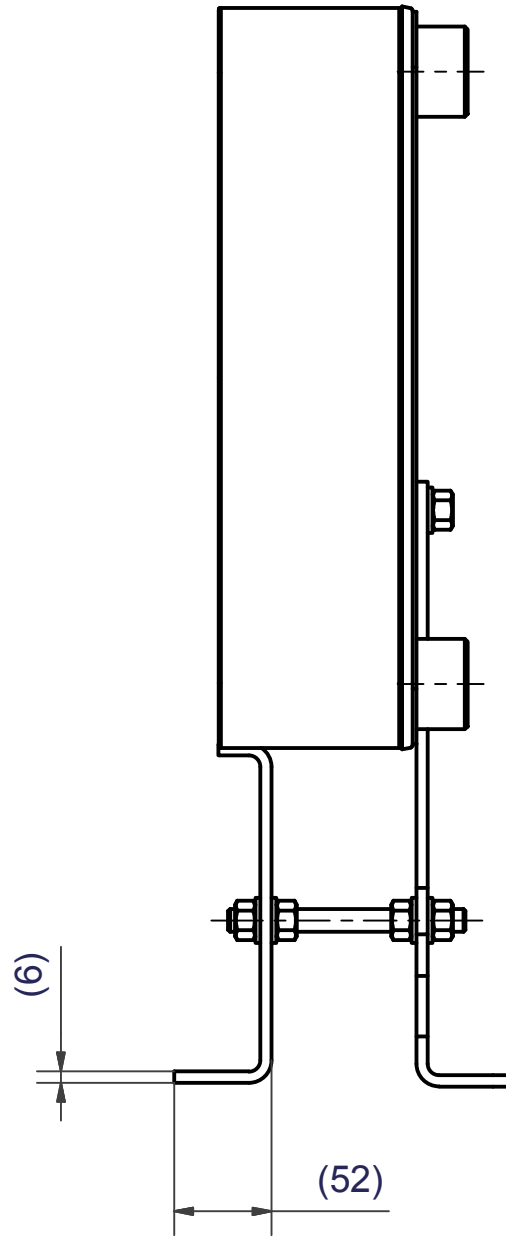
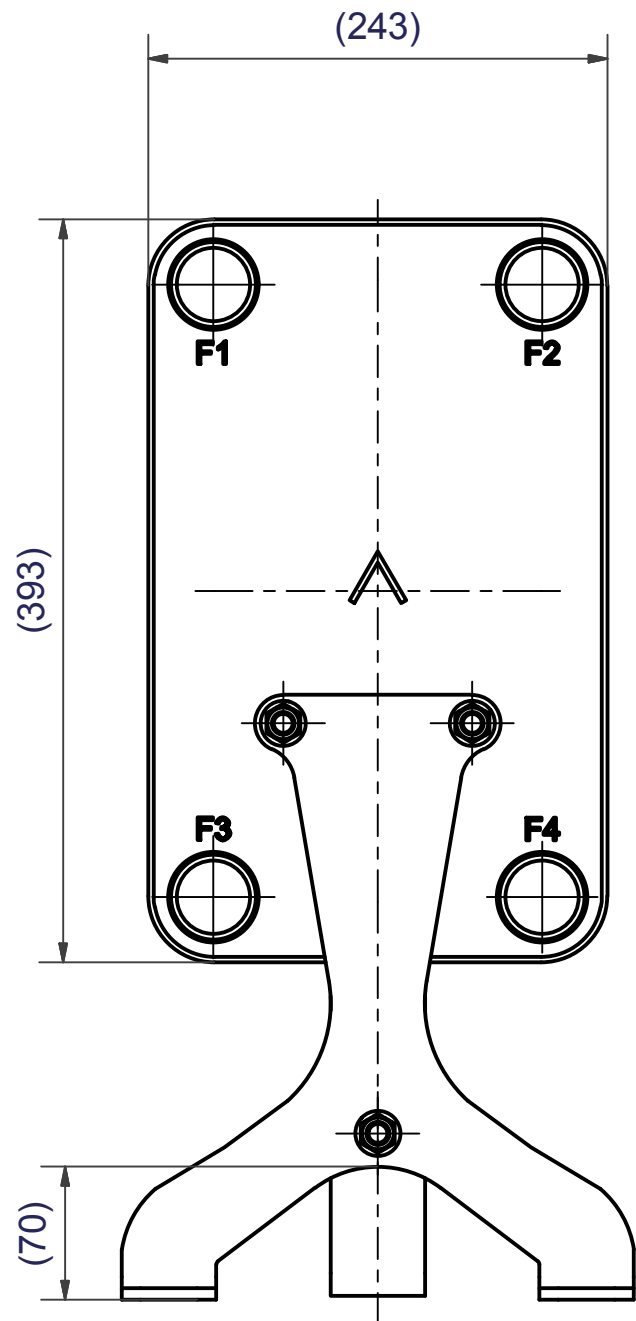
AXINTRA
ÉCHANGEURS THERMIQUES

NOTE 1 ALTERNATE MARKING: STICKER OR STAMP

F4	45054	ISO-G 1 1/2 , TH = 27,1	CD000040
F3	45083	SOLDER 42U, TH = 27,1	CD000100
F2	45054	ISO-G 1 1/2 , TH = 27,1	CD000040
F1	45083	SOLDER 42U, TH = 27,1	CD000100
F	28017	B35/B60 SUPPORT LEG	CG350007_1
F	21112	B35 BOLT LOC F 4x C140x100	CG350001_1

Title B35TM0x50/1P-SC-M 2x42U+2x1 1/2"			
 A DOVER COMPANY	Created Date 2024-01-25	Created By AU	
	Article/Configuration number 03224783.1	Drawing number AU00777248_03224783.1	

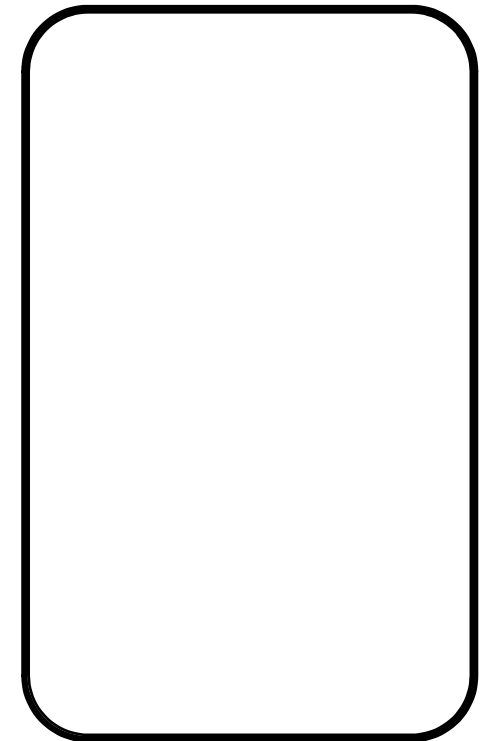
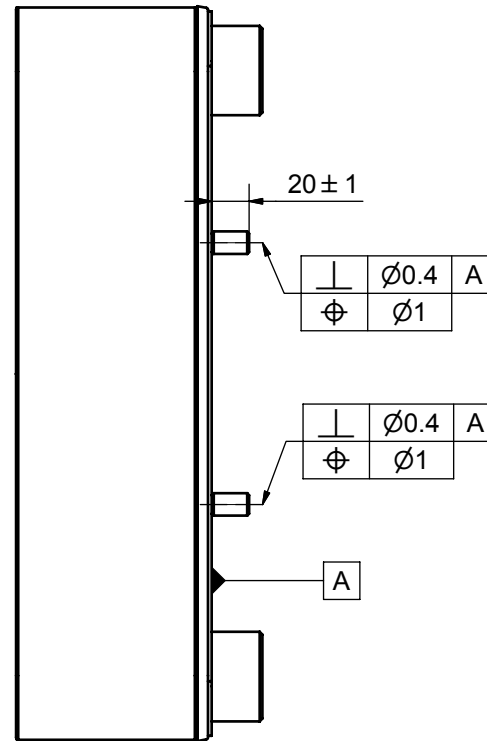
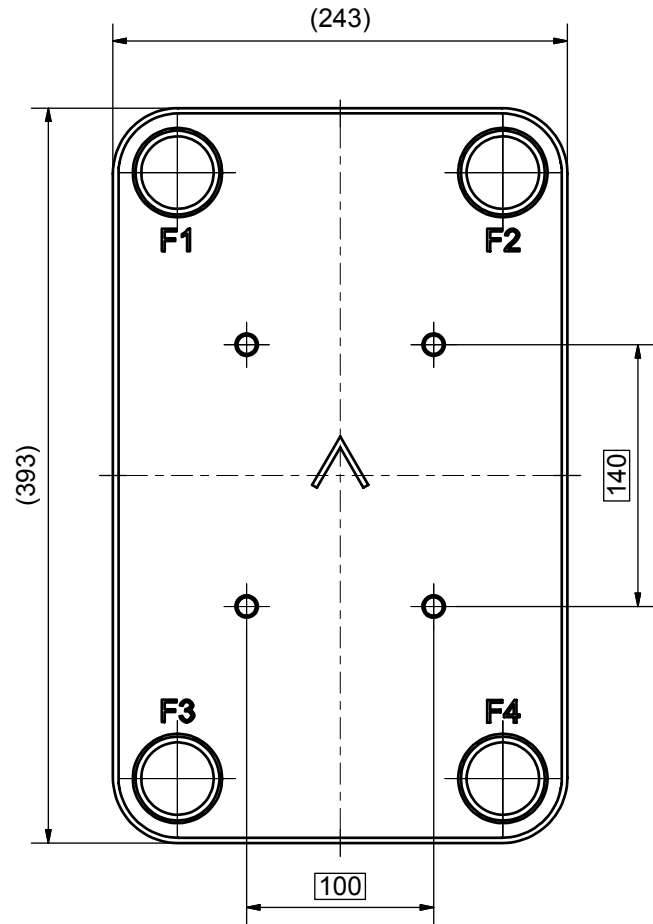
Pos	Article No	Title / Denomination, code, material, dimension etc	Drawing No./ref	Pos	Article No	Title / Denomination, code, material, dimension etc	Drawing No./ref
-----	------------	---	-----------------	-----	------------	---	-----------------



Note 1: Requires stud bolt option 21112 (F-side) or 21114 (P-side) for B35.
 Requires stud bolt option 21244 (F-side) or 21246 (P-side) for B60.

8	2	R-LOCKNUT M12 A2 DIN 985	-
7	1	B35 SUPPORT LEG ART. NO. 28028	CC000163
7	4	NUT M12 M6M 8M FZB	
4	6	WASHER ART. NO 45524	13x24x2.5
3	1	THREADED BAR M12	
2	1	REAR SUPPORT LEG ART. NO. 28027	CC000165
IT	QTY	TITLE	Drawing No.
import	PDM	PDM	2008-09-25
		General geometrical tolerancing ISO 2768	General surface finish R_a
		m	3.2
		Title	
		B35/B60 SUPPORT LEG	
		Article number	Drawing number
		28017/-18/-19	CG350007
		Revision	Sheet
		00	1 (1)

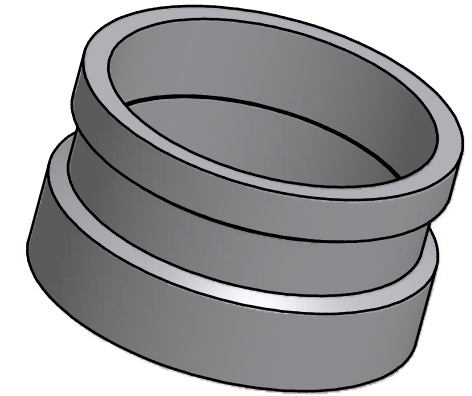
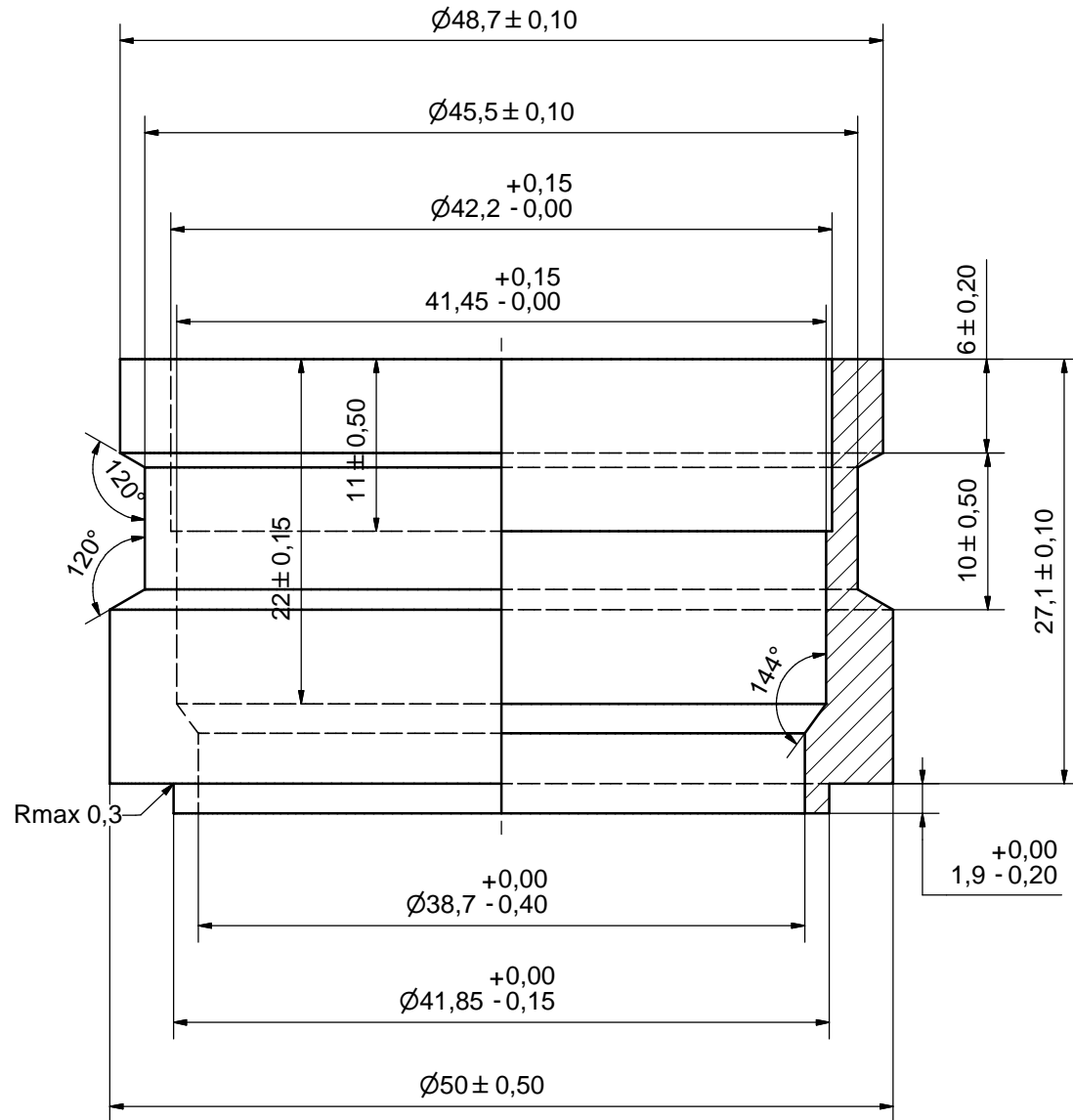
Rev No.	Alteration	Date	Checked	Approved
2	REDRAWN IN INVENTOR	2004/12/10	PDM	PDM



© Company Confidential, Property of SWEP International AB

1	4	STUD BOLT M12 x 20, ART. NO. 45095	M12 x 20
ITE	QTY	DESCRIPTION	Drawing No.
Drawn JA	Checked PDM	Approved PDM	Created Date 2004/10/12
		General geometrical tolerancing ISO 2768 m	General surface finish R_a 3.2
Title B35 BOLT LOC F 4x C140x100			Scale 1:1
Article number 21112		Drawing number CG350001	Revision 2
		Sheet 1 (1)	

Rev No.	Alteration	Date	Checked	Approved
12	DEBURRING INFO ADDED	2009/03/10	TL	PDM

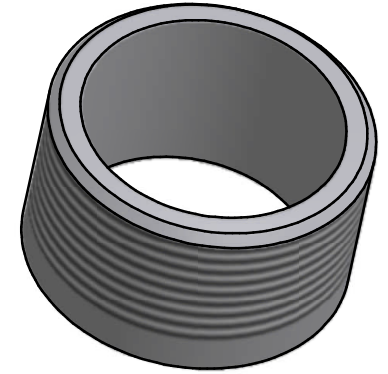
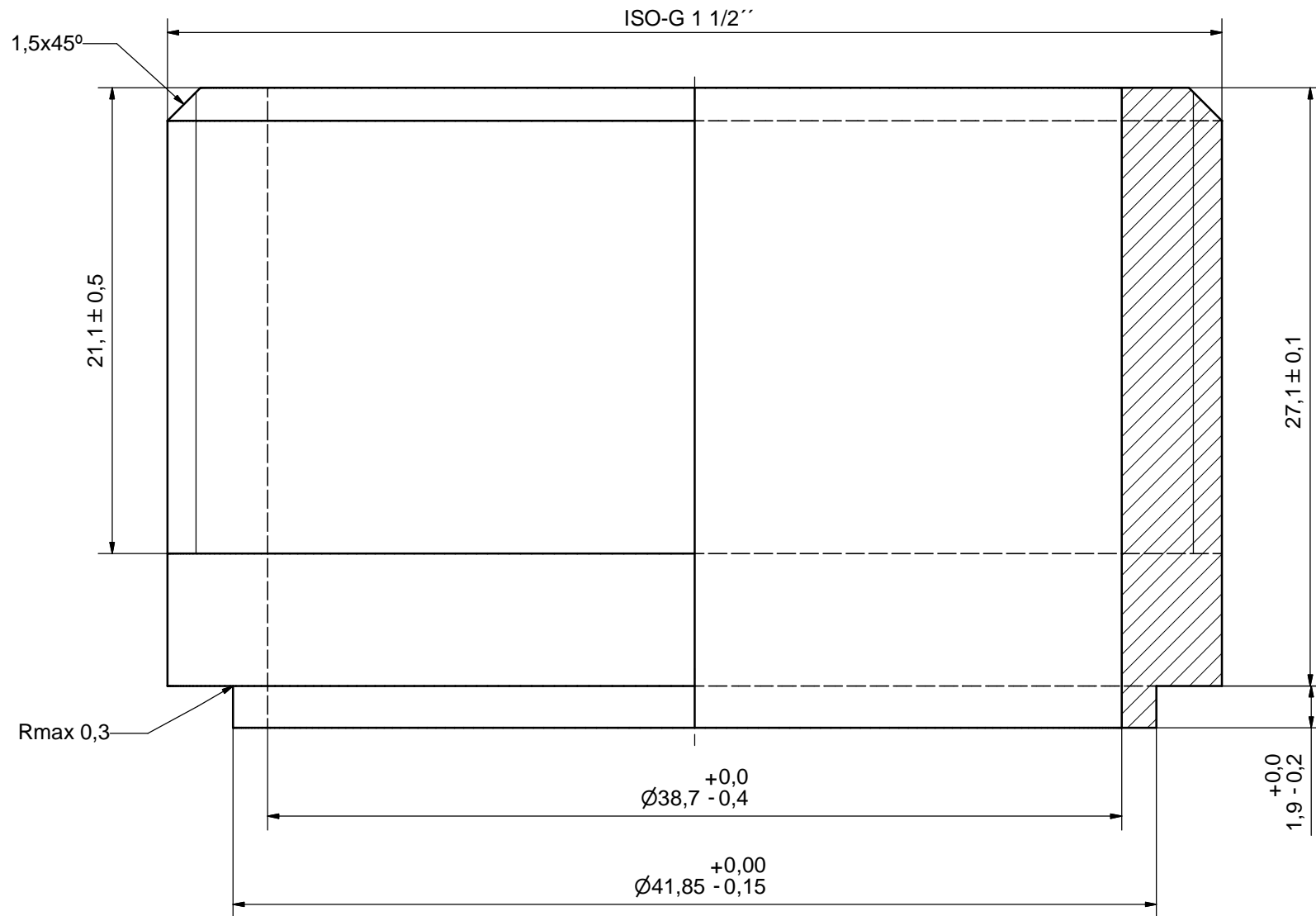


SHARP EDGES DEBURRED MAX 0,4

ACCORDING TO MQS
MATERIAL

Drawn SA	Checked TP	Approved VP	Created Date 1990-09-08	General geometrical tolerancing ISO 2768 m	General surface finish R_a 3.2	Scale -
Title SOLDER 42U			Article number -	Drawing number CD000100	Revision 12	Sheet 1 (1)

Rev No.	Alteration	Date	Checked	Approved
11	DEBURRING INFO ADDED	2009/03/10	TL	PDM



SHARP EDGES DEBURRED MAX 0,4

ACCORDING TO MQS
MATERIAL

Drawn HR	Checked TP	Approved VP	Created Date 1990-09-08	General geometrical tolerancing ISO 2768 m	General surface finish R _a 3.2	Scale -
Title ISO-G 1 1/2			Article number -	Drawing number CD000040	Revision 11	Sheet 1 (1)