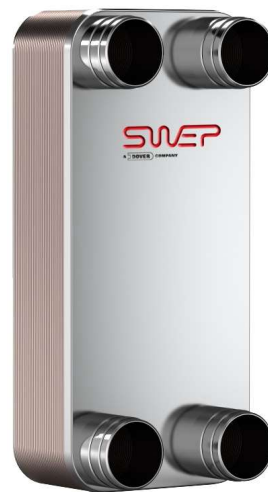


B56

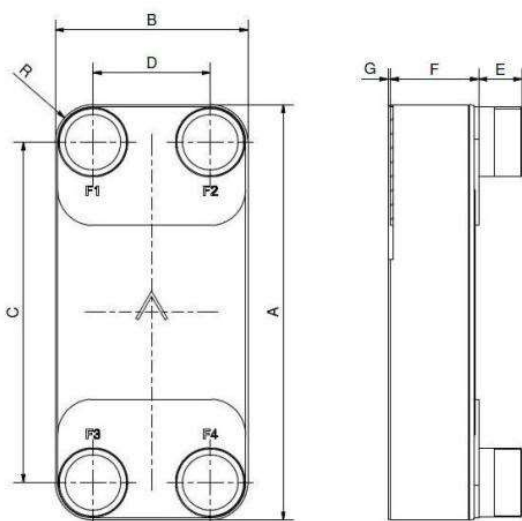
Le B56 est spécialement conçu pour offrir un transfert thermique efficace dans des applications de chauffage et industrielles. Équipé de notre technologie brevetée AsyMatrix®, il offre une option polyvalente pour diverses applications, et en particulier pour le chauffage urbain et le refroidissement d'huile.



Spécifications de base

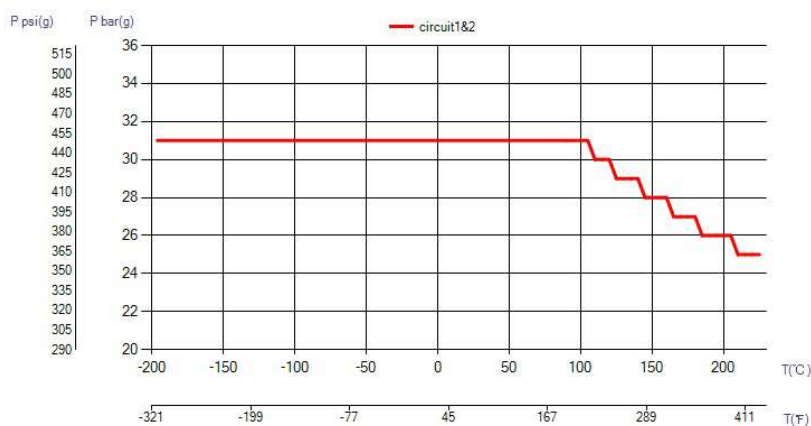
Nombre de plaques max. (NoP)	280
Débit volumétrique max.	76,2 m ³ /h (8.81 gpm)
Volume du canal	0.21/0.297 dm ³ (0.0074/0.0105 ft ³)
Matières	Plaques en acier inoxydable 316, brasage cuivre
Poids sans les connexions	9.52+(0.419*NoP) kg 20.98+(0.924*NoP) lb

Les dimensions standard



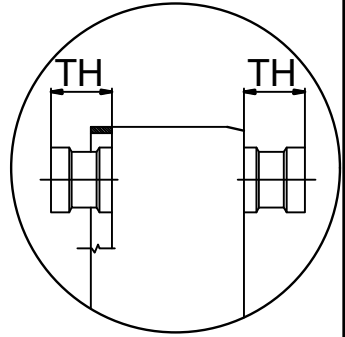
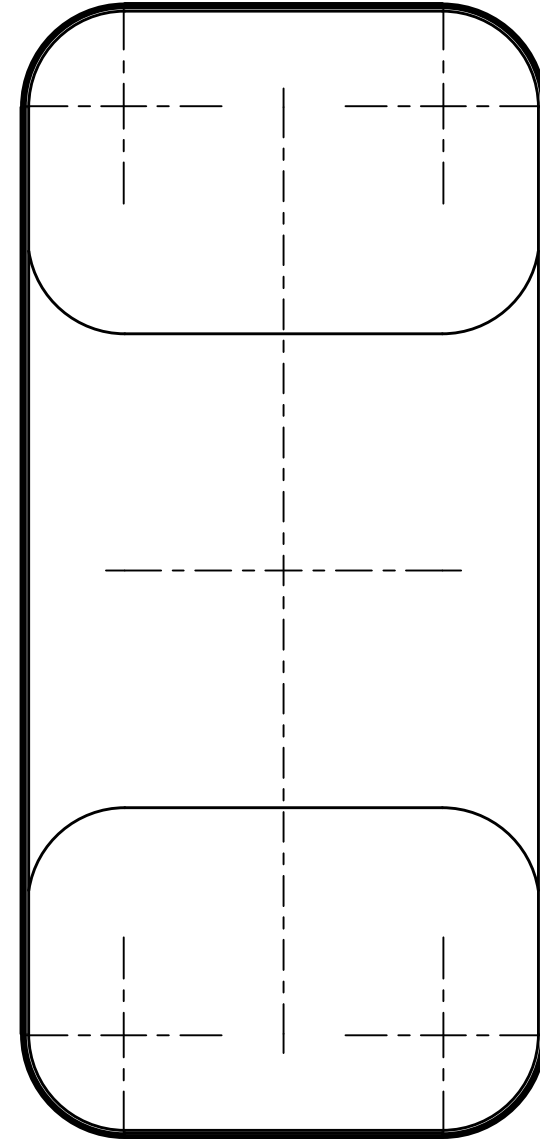
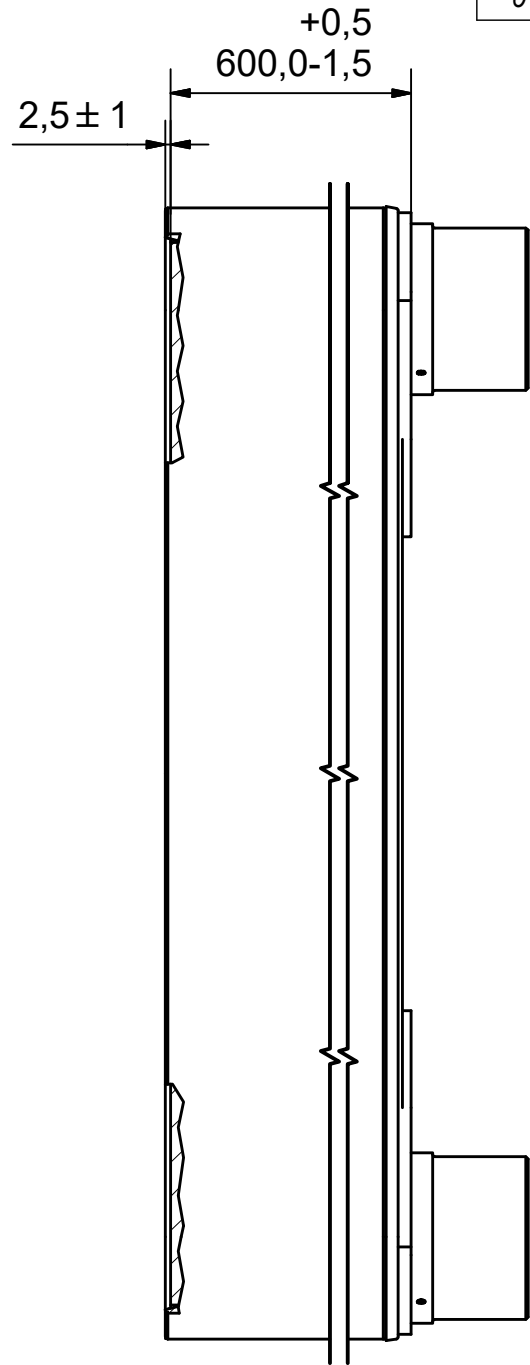
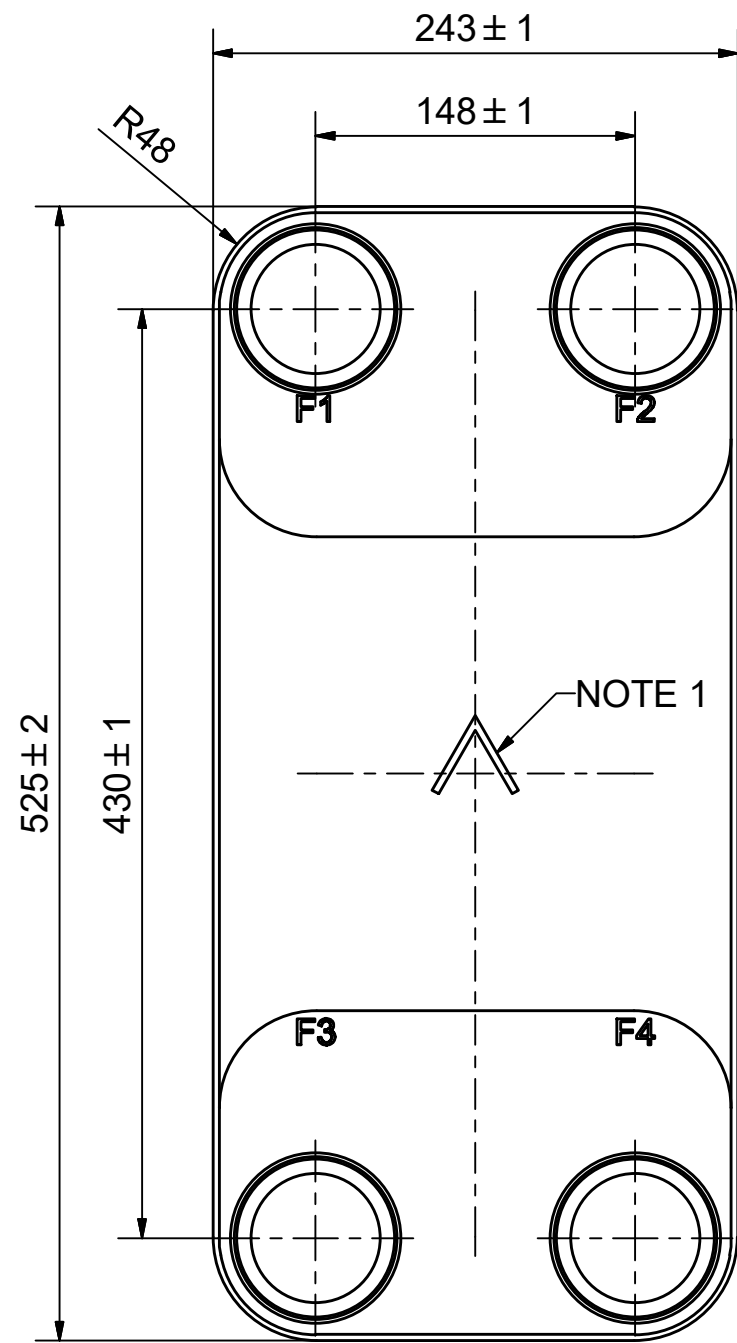
#	MM	IN
A	525	20.67
B	243	9.57
C	430	16.93
D	148	5.83
F	14.00+2.44*(NoP)	0.55+0.1*(NoP)
G	3	0.12
R	48	1.89
E_1	54	2.13

PED pression / température



ÉCHANGEURS THERMIQUES

Rev No	Alteration	Date	Checked
01	"G" Dimension was 3 mm	2014-08-05	inskp



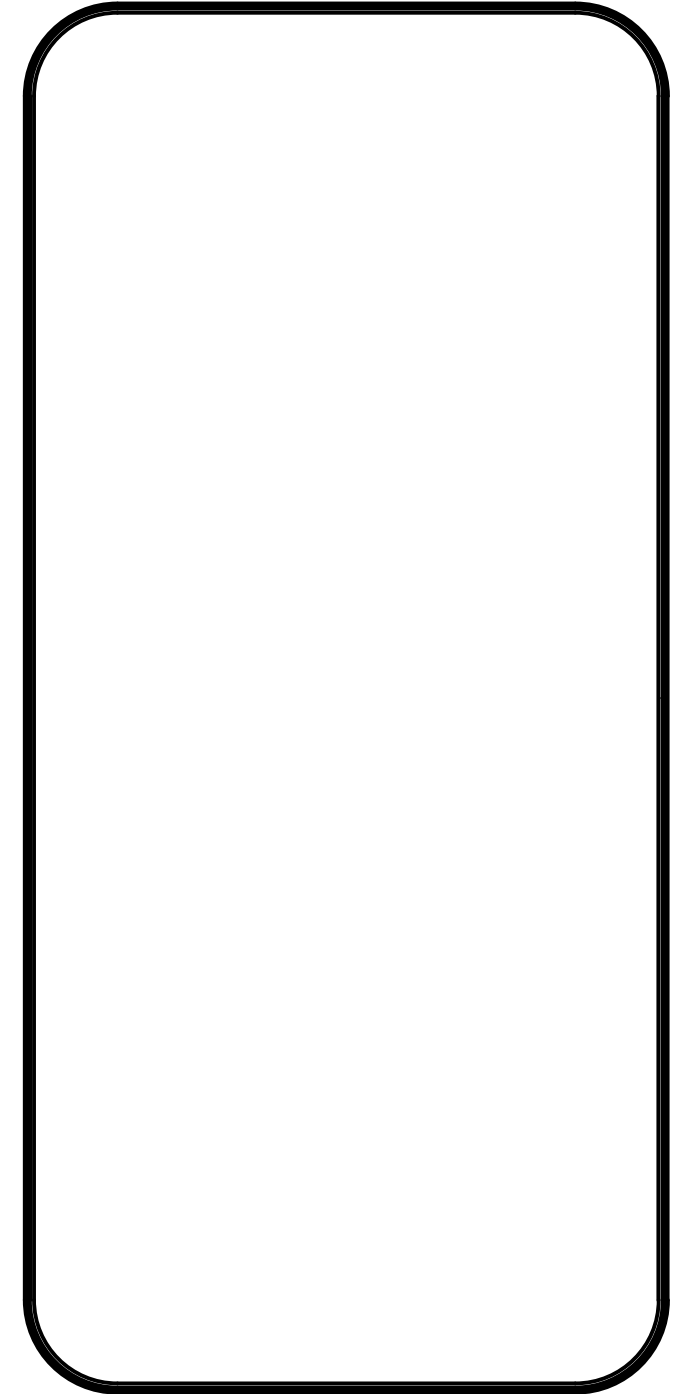
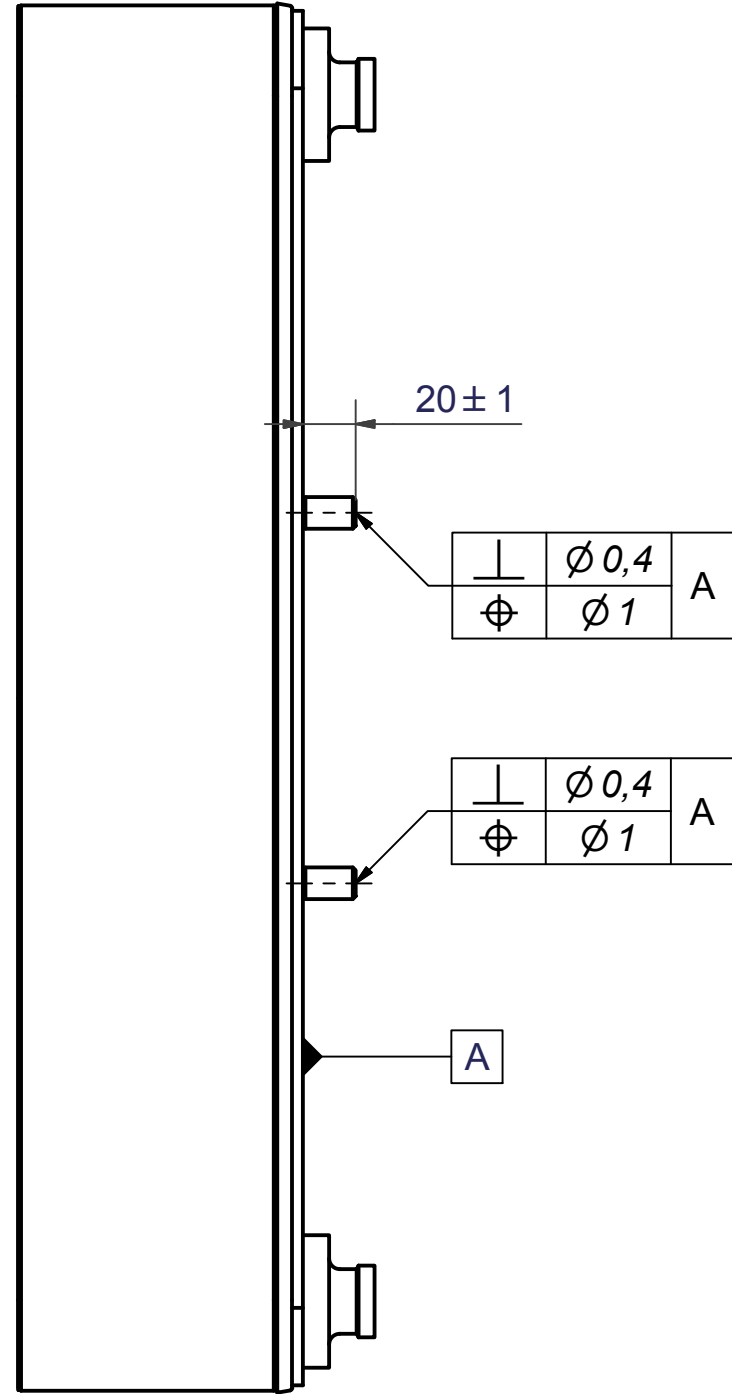
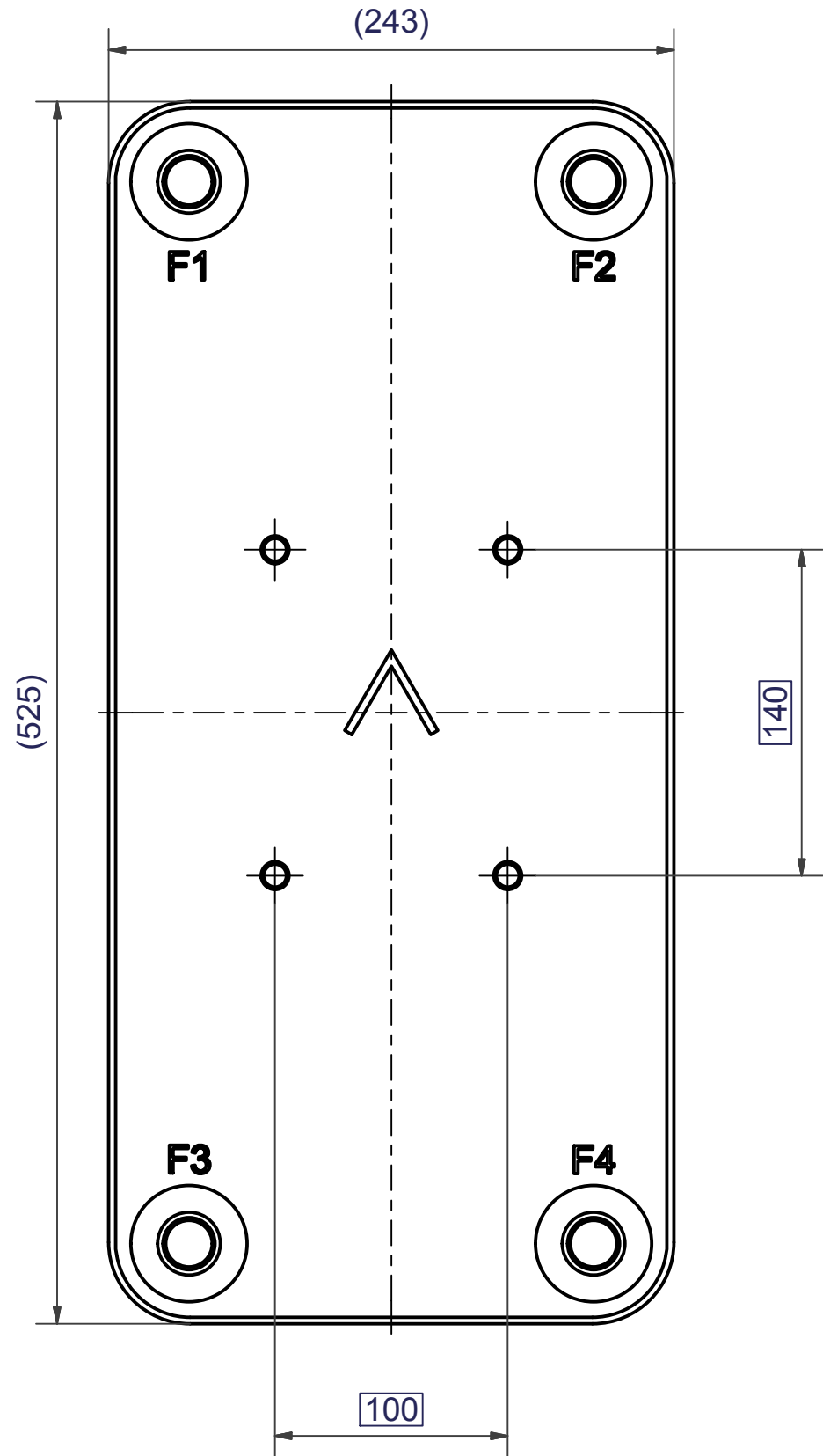
AXINTRA
ÉCHANGEURS THERMIQUES


NOTE 1 ALTERNATE MARKING: STICKER OR STAMP

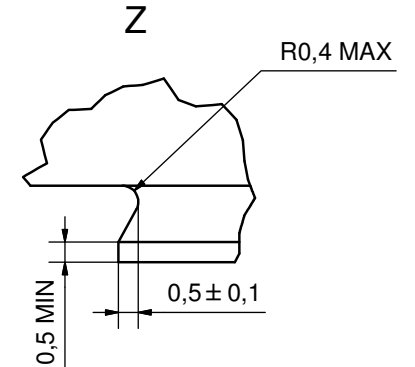
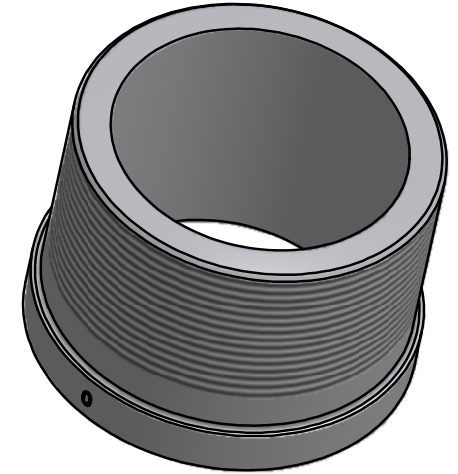
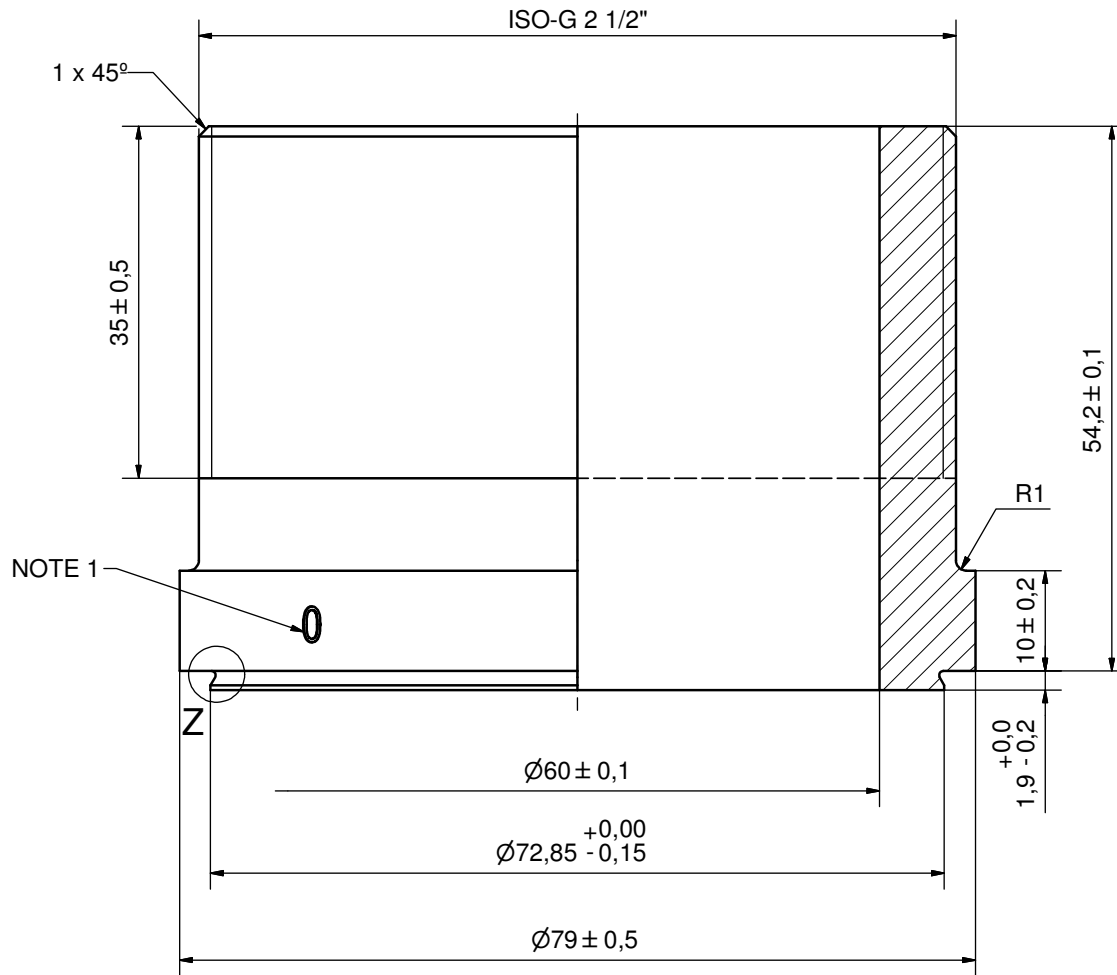
F4	36127	ISO-G 2 1/2", TH = 54,2	CD001429
F3	36127	ISO-G 2 1/2", TH = 54,2	CD001429
F2	36127	ISO-G 2 1/2", TH = 54,2	CD001429
F1	36127	ISO-G 2 1/2", TH = 54,2	CD001429

Title			
B56H/1P-SC-Y			
SWEP A DOVER COMPANY	Created Date	Created By	
	2019-01-24	AU	
Article/Configuration number		Drawing number	
18236-240		AU00454573	

Pos	Article No	Title / Denomination, code, material, dimension etc	Drawing No./ref	Pos	Article No	Title / Denomination, code, material, dimension etc	Drawing No./ref
-----	------------	---	-----------------	-----	------------	---	-----------------





1	4	STUD BOLT M12x20 ART. NO. 45095	M12x20
IT	QTY	DESCRIPTION	Drawing No./Ref
lathe	PDM	PDM	2004-10-12
General geometrical tolerancing ISO 2768:		m	General surface finish R _a
		3.2	1:1
		B120T/50 BOLT LOC F 4x C140x100	
Article number		21118	Drawing number
		CG450024	Revision
		00	Sheet
			1 (1)



NOTE 1: MARKING TEXT "0" FOR IDENTIFICATION ONLY
PRESENT AT 2 PLACES 180° FROM EACH OTHER
0 = 304 MATERIAL

DEBURR SHARP EDGES; MAX 0.4

ACCORDIN TO MQS
MATERIAL

Drawn	Checked	Approved	Created Date	General geometrical tolerancing ISO 2768	General surface finish R_a	Scale
SKP	PDM	PDM	2011-04-05	m	3.2	-
			Title			
			ISO-G 2 1/2"			
Article number	DesignType	Drawing number	Revision	Sheet		
-		CD001429	00	1 (1)		