

# B120T

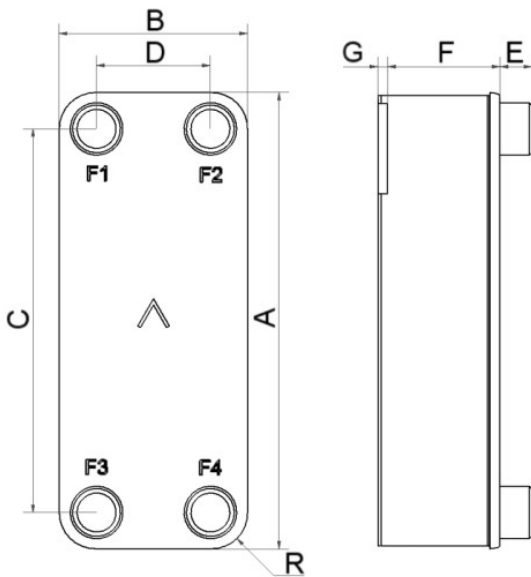
Le B120T a été spécialement conçu pour fonctionner dans des applications de chauffage et industrielles exigeantes, généralement des applications eau-eau et des refroidisseurs d'huile. Ce produit a contribué à l'échange rapide des échangeurs de chaleur traditionnels à plaques et joint, ou à calandre en faveur des BPHE. Il est largement utilisé comme condenseur dans des applications de climatisation et de réfrigération.



## Spécifications de base

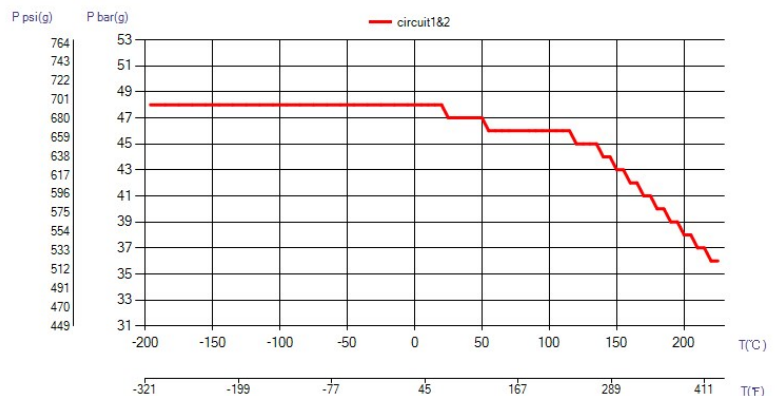
Nombre de plaques max. (NoP)	250
Débit volumétrique max.	27,4 m³/h (17.61 gpm)
Volume du canal	0.241/0.241 dm³ (0.0085/0.0085 ft³)
Matières	Plaques en acier inoxydable 316, brasage cuivre
Poids sans les connexions	8.33+(0.404*NoP) kg 18.36+(0.891*NoP) lb

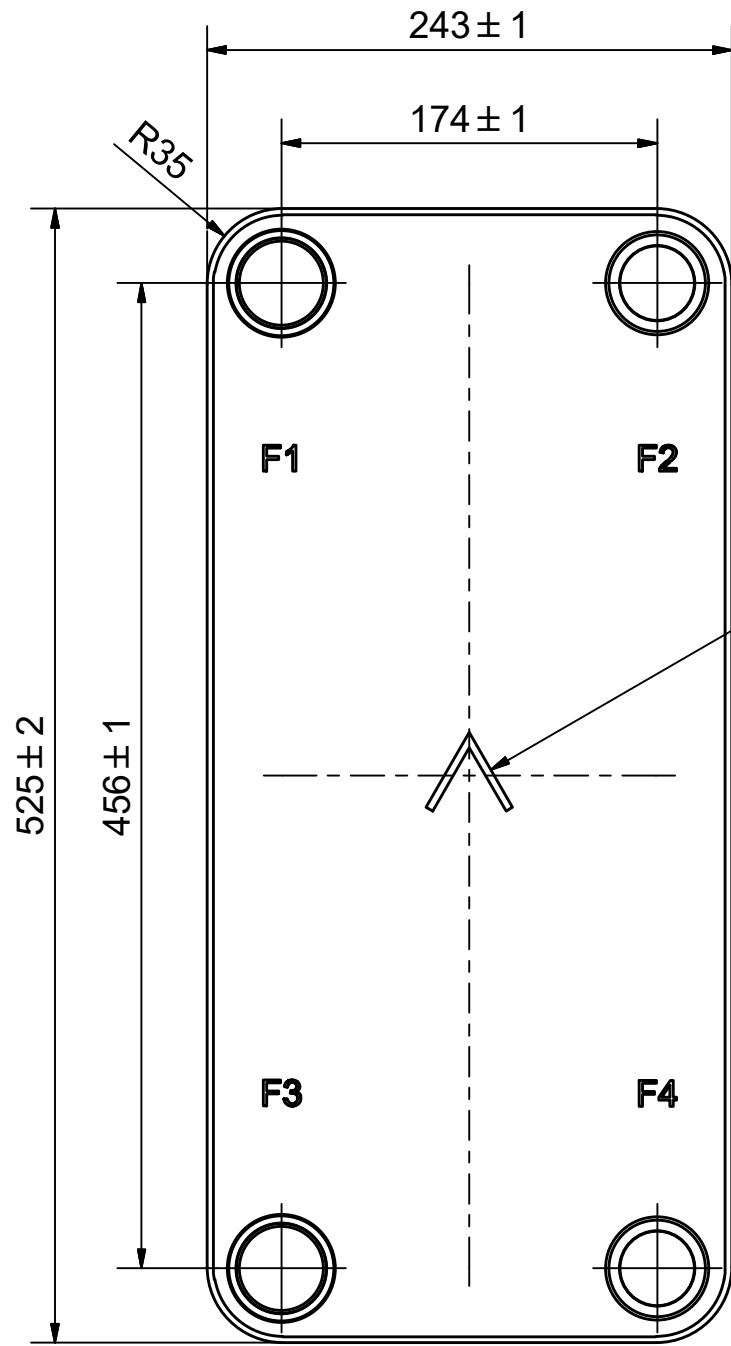
## Les dimensions standard



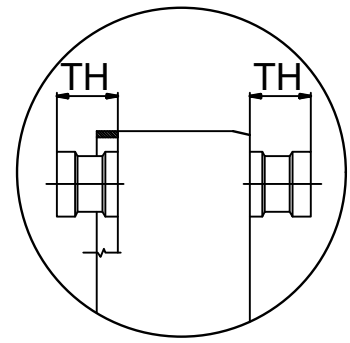
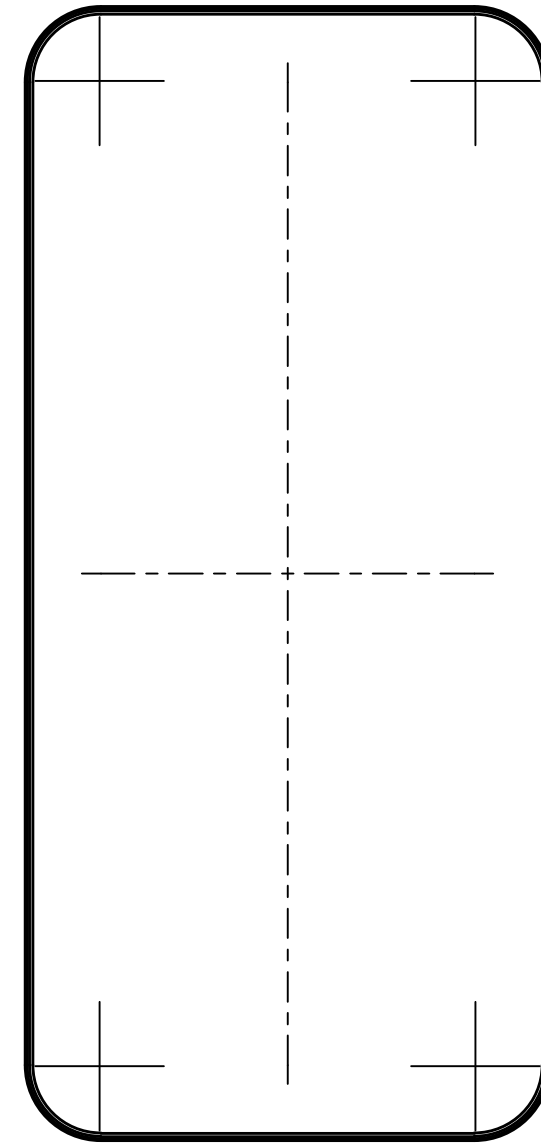
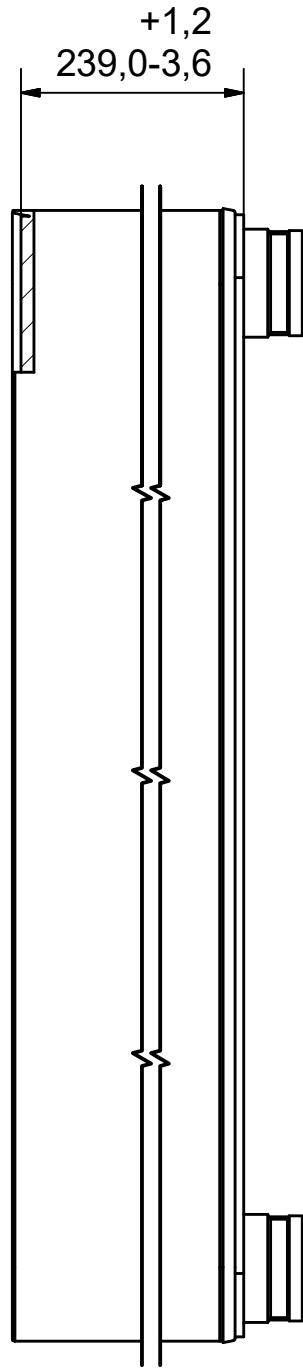
#	MM	IN
A	525	20.67
B	243	9.57
C	456	17.95
D	174	6.85
F	10.00+2.29*(NoP)	0.39+0.09*(NoP)
G	4	0.16
R	35	1.38
E_1	27	1.06

## PED pression / température





NOTE 1



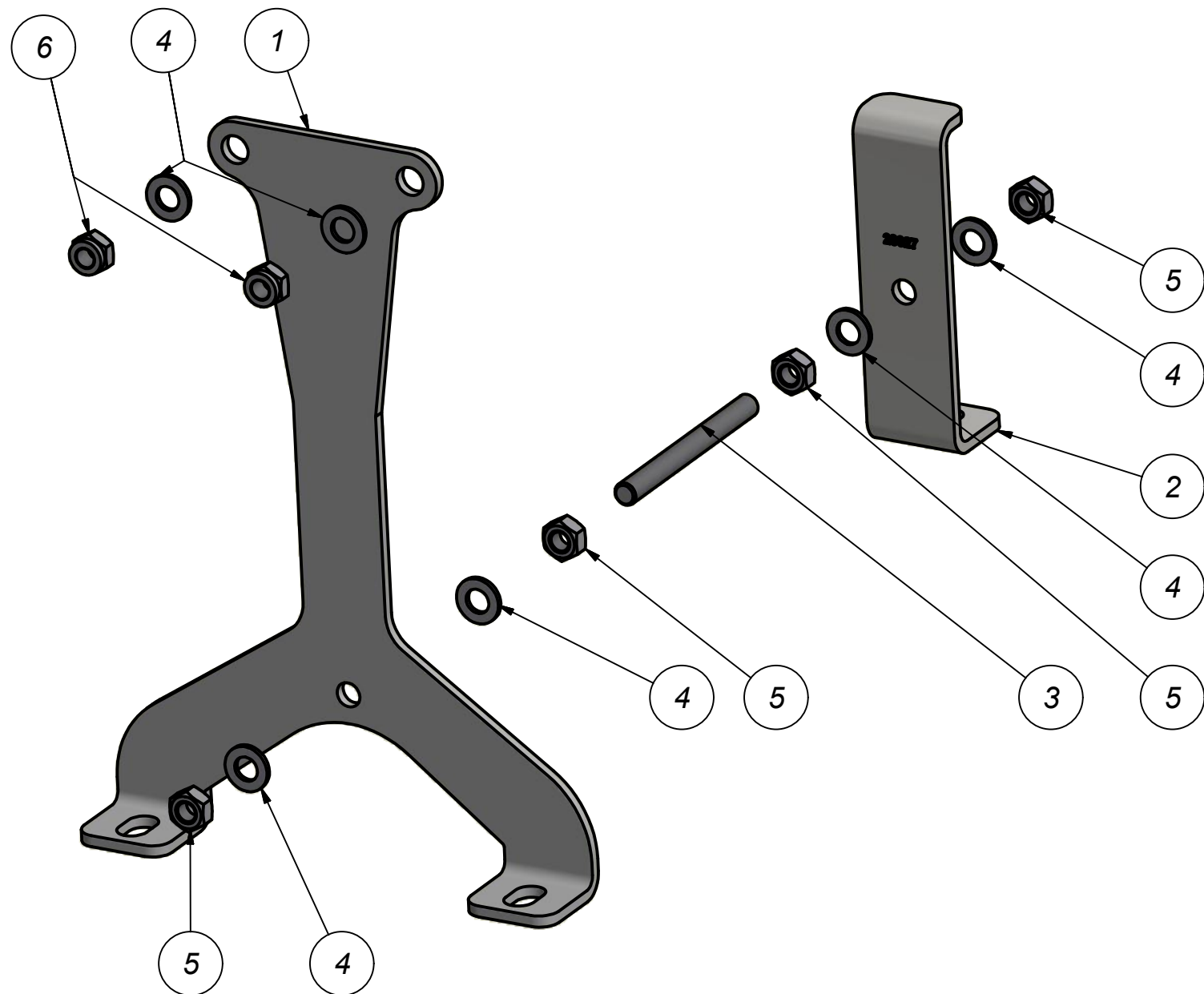
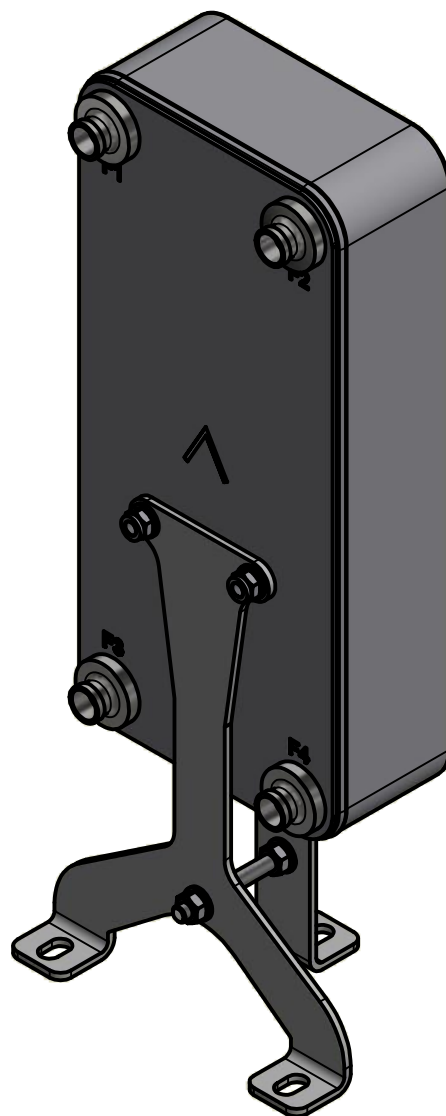
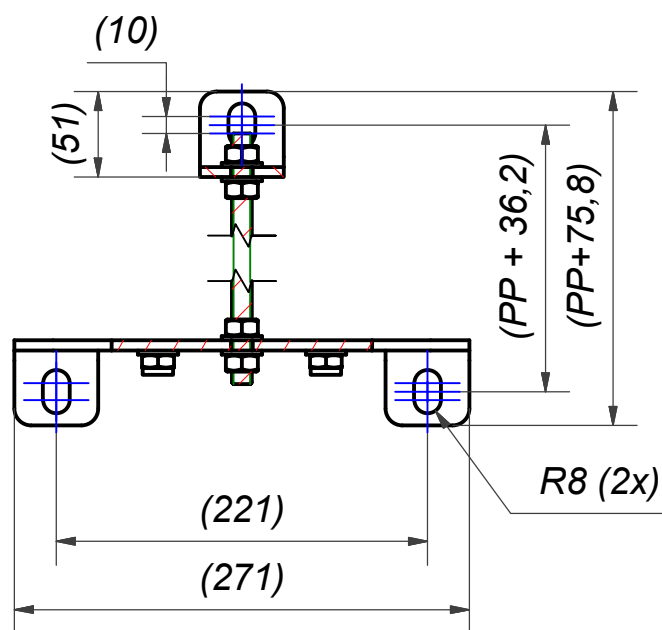
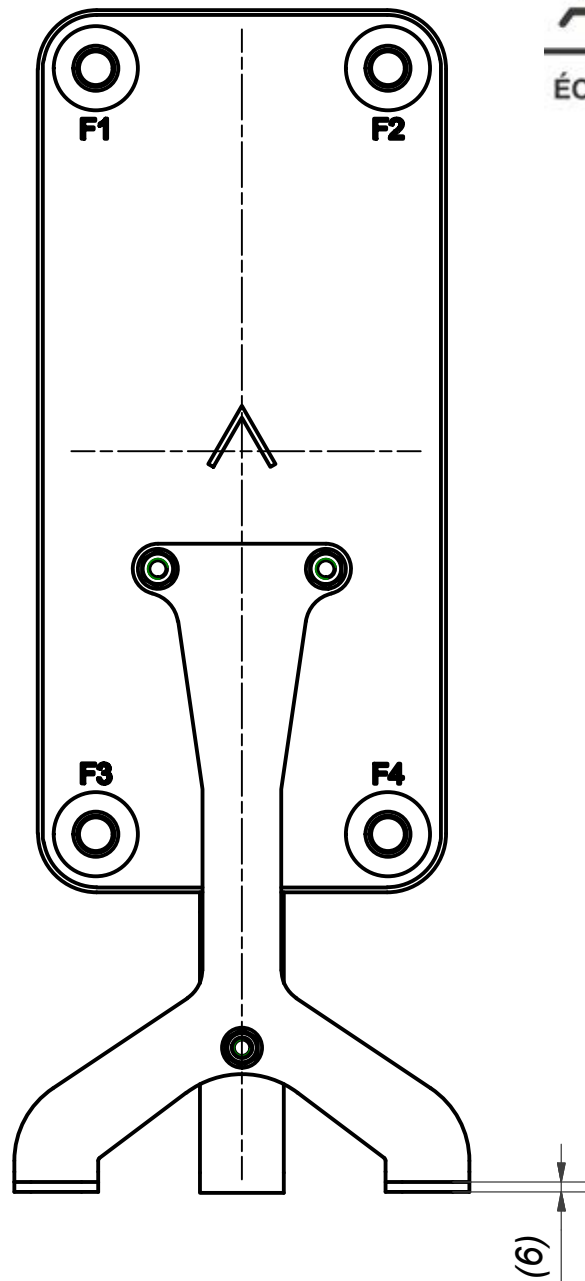
NOTE 1 ALTERNATE MARKING: STICKER OR STAMP

F4	32836	ISO-G 1 1/2 A & SOLDER 35,1, TH = 27,1	CD000860
F3	45083	SOLDER 42U, TH = 27,1	CD000100
F2	32836	ISO-G 1 1/2 A & SOLDER 35,1, TH = 27,1	CD000860
F1	45083	SOLDER 42U, TH = 27,1	CD000100



Title		B120TH/1P-SC-M	
Created Date		2024-02-23	Created By
Article/Configuration number		14171-100	Drawing number
A DOVER COMPANY		AU00035427_14171-100	

Pos	Article No	Title / Denomination, code, material, dimension etc	Drawing No./ref	Pos	Article No	Title / Denomination, code, material, dimension etc	Drawing No./ref
-----	------------	---	-----------------	-----	------------	---	-----------------



**NOTE 4:** For size 220 is required for connections to have diameter of MAX 65 mm.  
**NOTE 3:** Length of threaded bar according drawing CC000168.  
**NOTE 2:** For B57 with STD Conn. Stud bolt 21235 is required.  
**NOTE 1:** Requires stud bolt 21118, 21120, 24023 (B45, 50, 56, 120T, 200, 220, 320LT, 320HT)

Rev No	Alteration	Date	Checked	Approved
06	Added NOTE 4 and size 220 to NOTE 1.	2019-05-17	SKDS	PDM

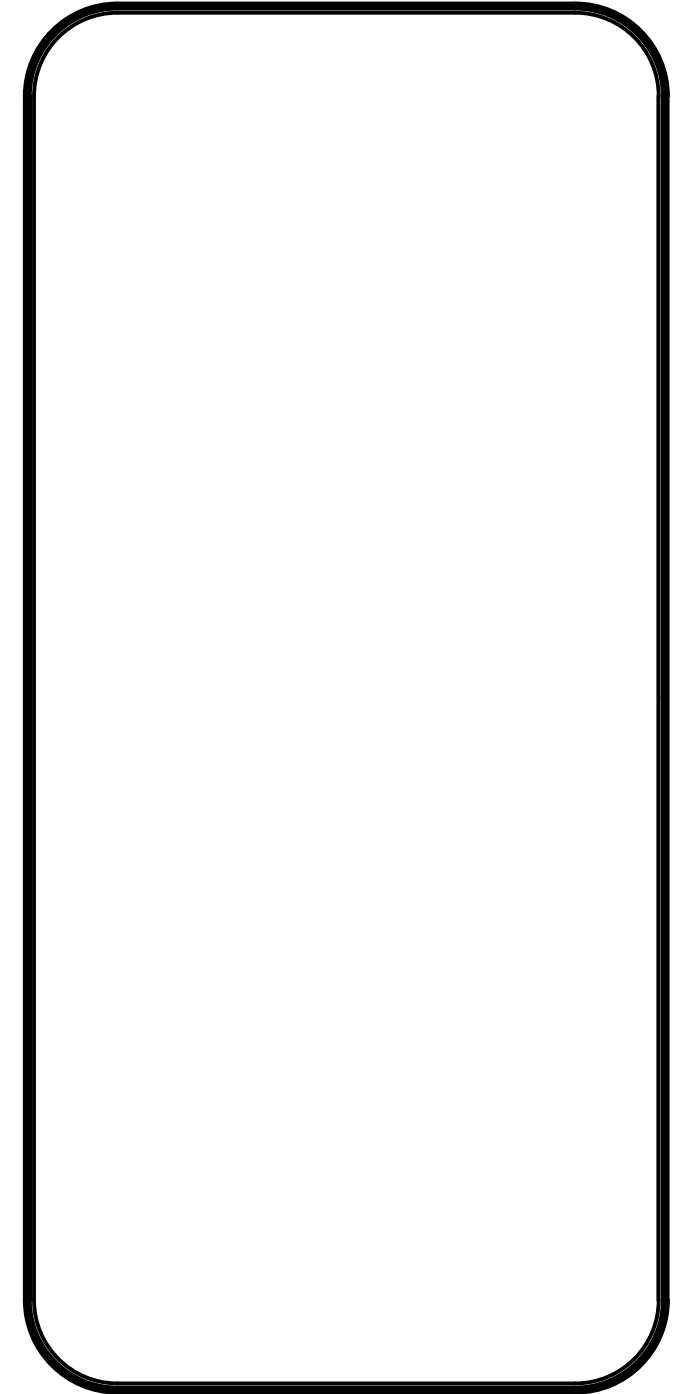
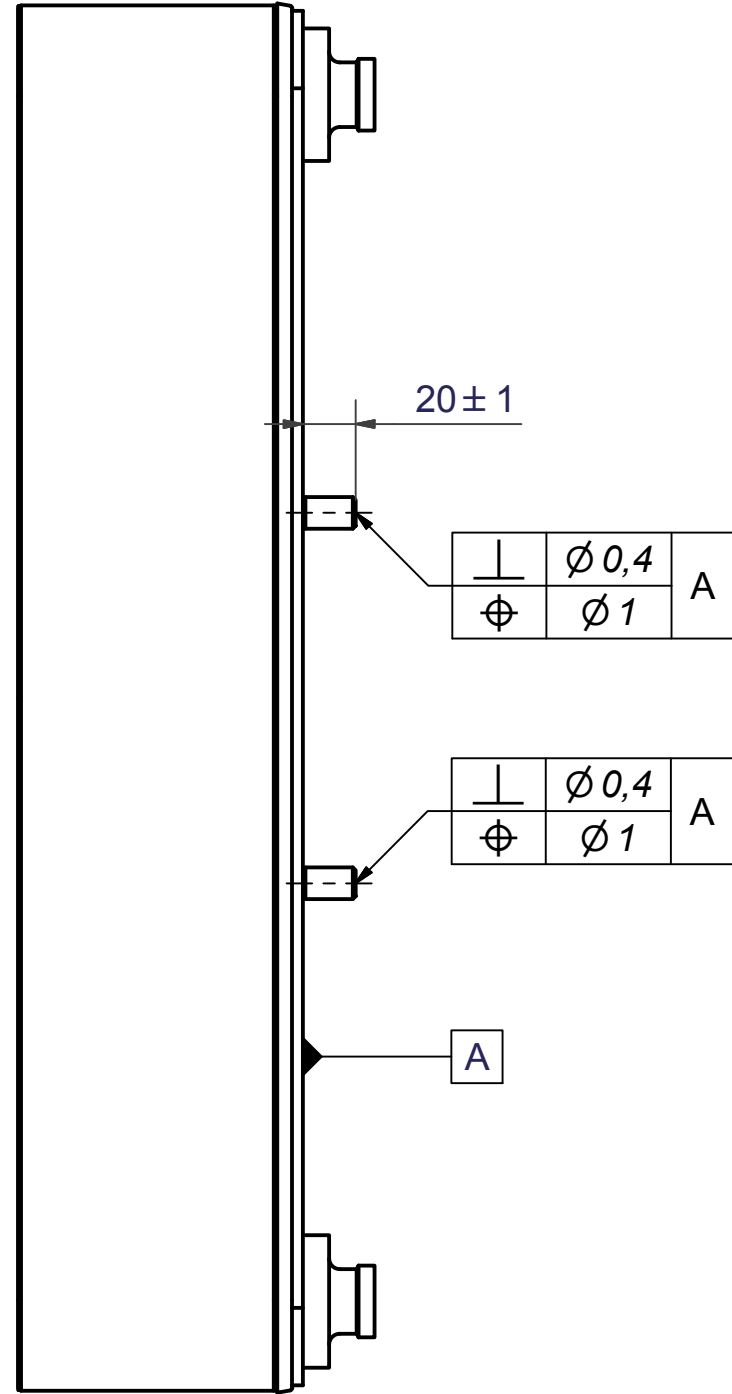
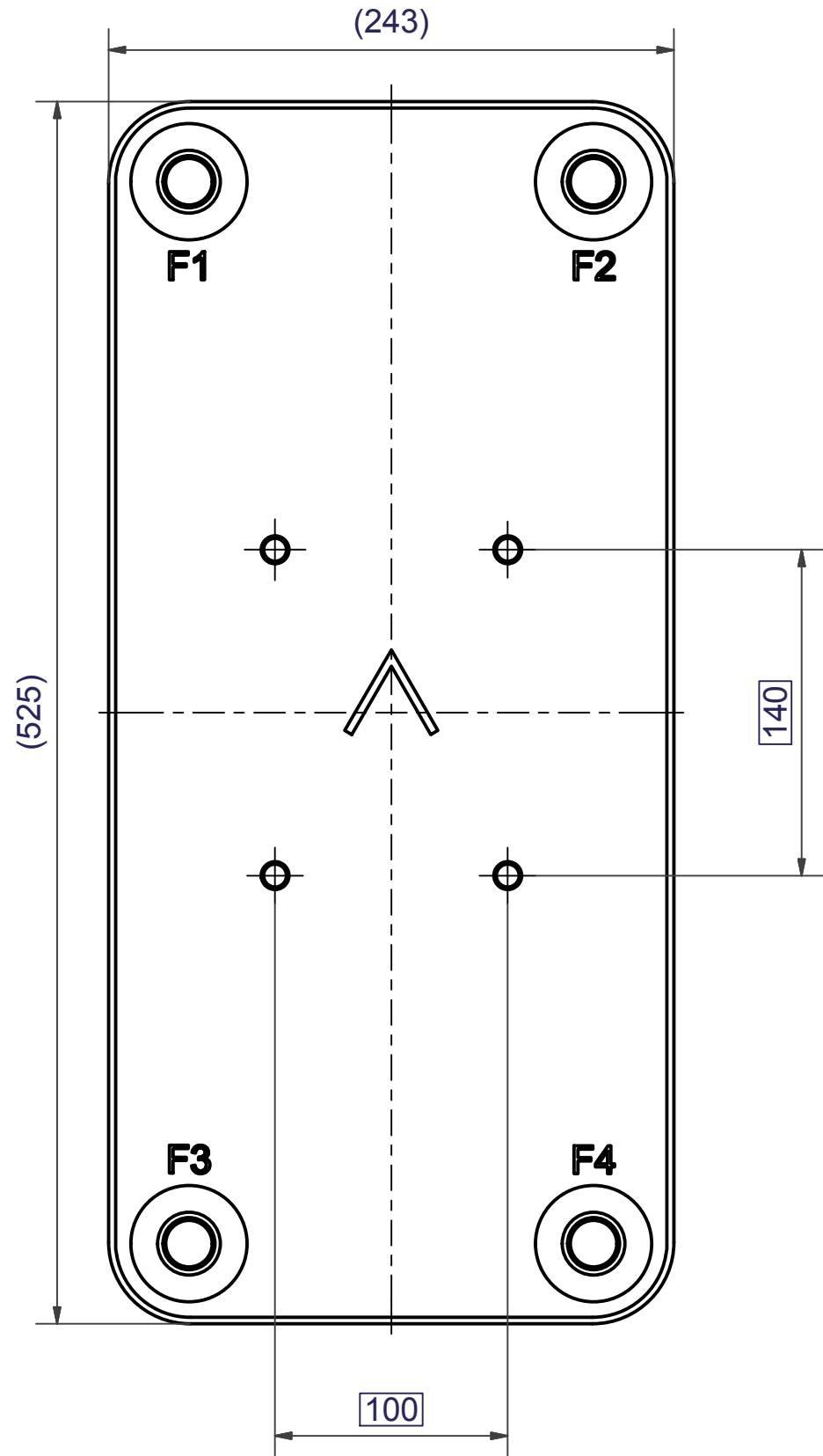
ITEM	QTY	TITLE	Drawing No.
6	2	DIN 985 - M12	DIN 985 - M12
5	4	NUT M12 M6M 8M FZB, 45889	DIN 934 - M12
4	6	WASHER ART. NO 45524	13x24x2.5
3	1	THREADED BAR M12	CC000168
2	1	B35/45/50/57 SUPPORT LEG. ART.NO.28027	CC000165
1	1	B45/50/57 SUPPORT LEG, ART.NO. 28029	CC000167

Drawn	Checked	Approved	Created Date	General geometrical tolerancing ISO 2768:	General surface finish $R_a$ :	Scale	Paper size
lathe	PDM	PDM	2005-07-27			-	A3

**SWEP**  
A DOVER COMPANY

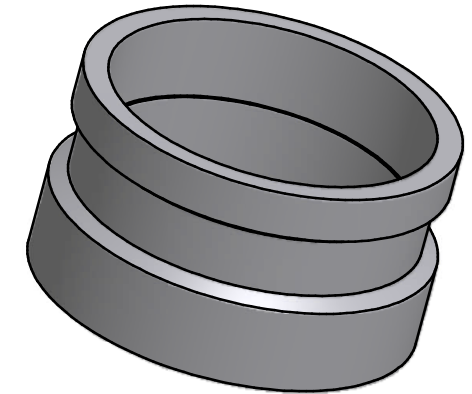
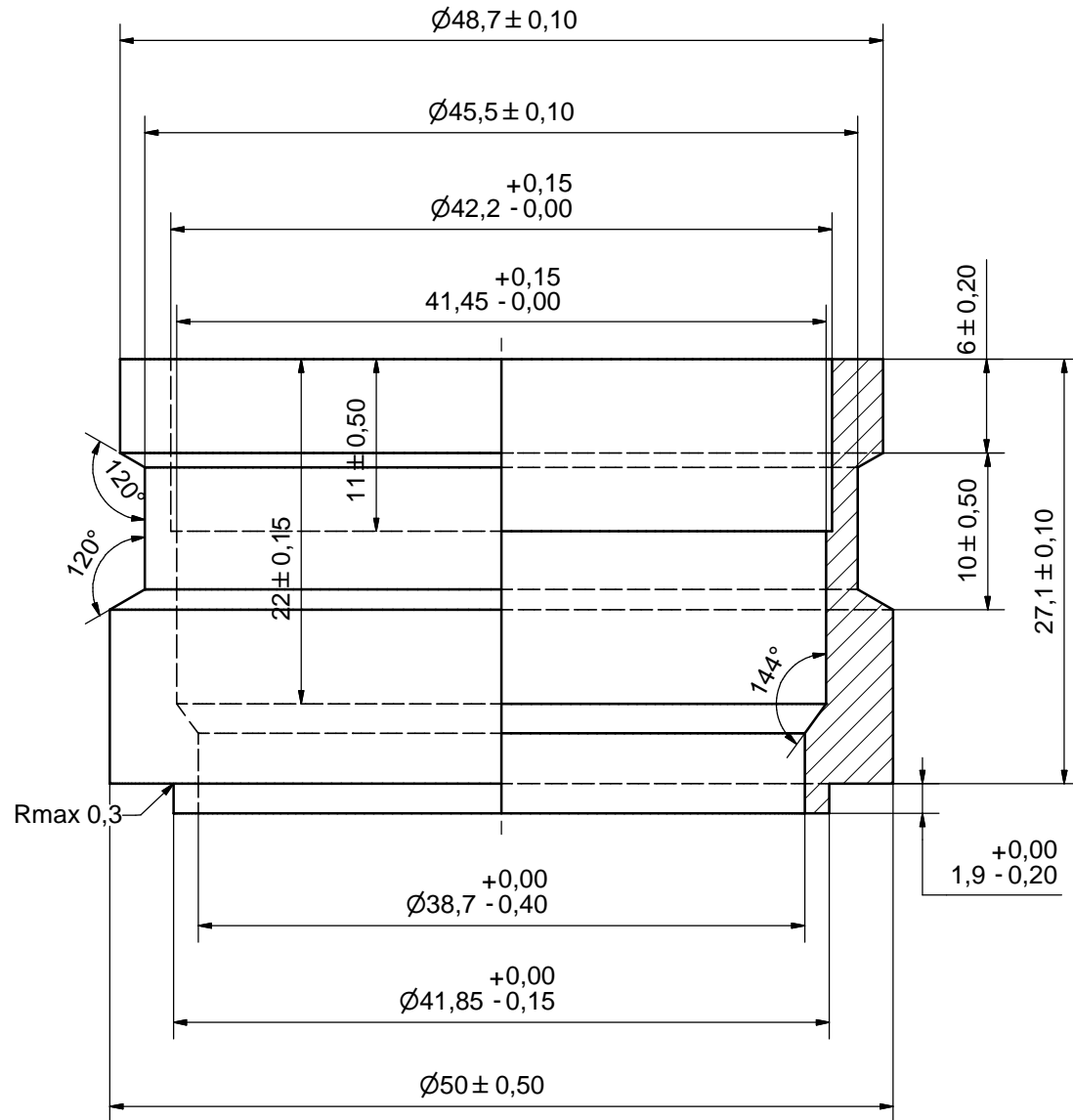
**B120/50/57 SUPPORT LEG**

Article / Tool number	Design Type	Drawing number	Revision	Sheet
CG	CG	CG450025	06	1 (1)



1	4	STUD BOLT M12x20 ART. NO. 45095	M12x20
IT	QTY	DESCRIPTION	Drawing No./Ref
lathe	PDM	PDM	2004-10-12
		General geometrical tolerancing ISO 2768: m	General surface finish R <sub>a</sub> : 3.2
		1:1	
		Title: <b>B120T/50 BOLT LOC F 4x C140x100</b>	
Article number: <b>21118</b>		Drawing number: <b>CG450024</b>	
		Revision: <b>00</b>	
		Sheet: <b>1 (1)</b>	

Rev No.	Alteration	Date	Checked	Approved
12	DEBURRING INFO ADDED	2009/03/10	TL	PDM

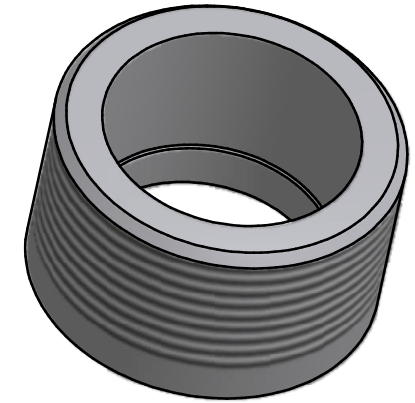
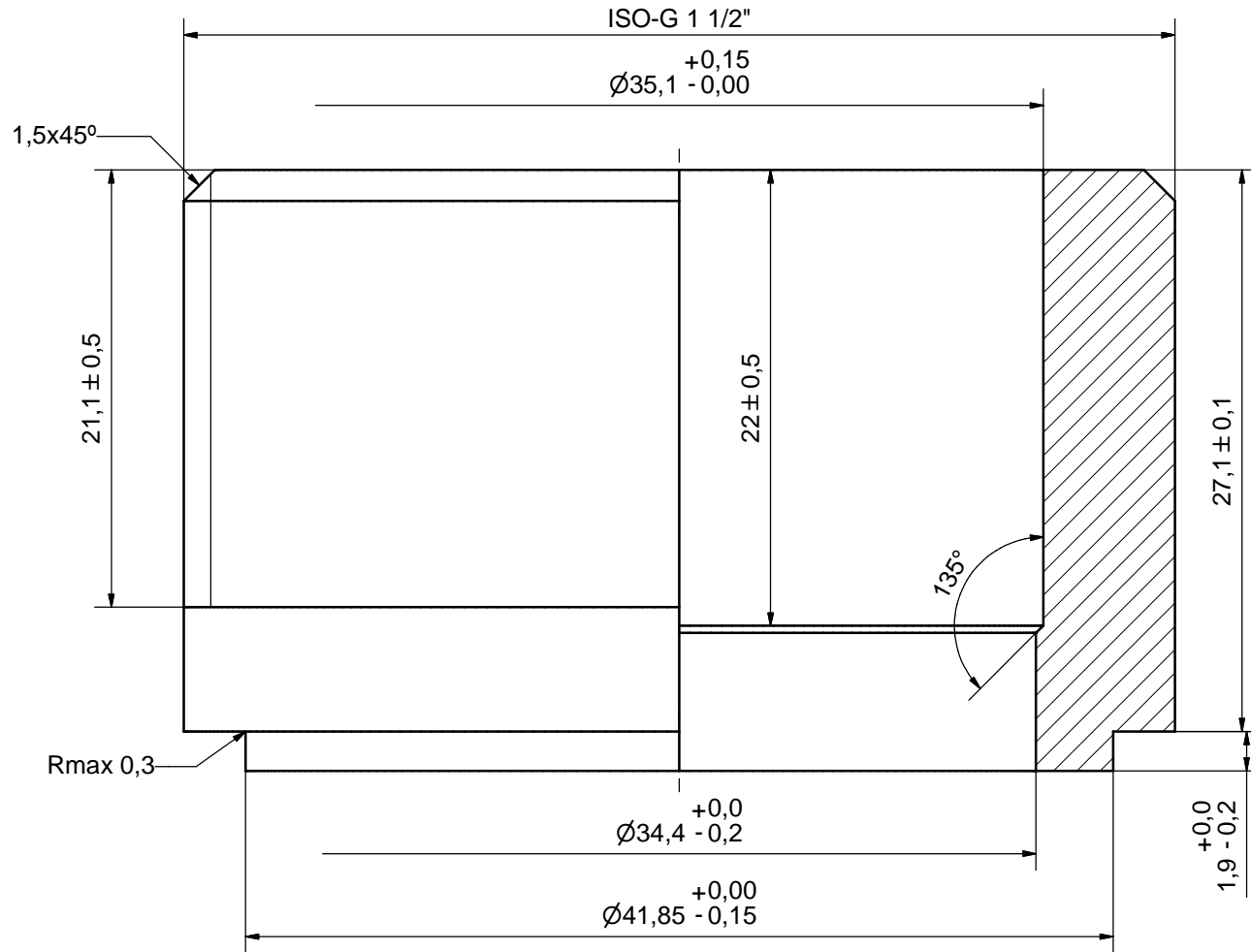


SHARP EDGES DEBURRED MAX 0,4

ACCORDING TO MQS  
MATERIAL

Drawn	SA	Checked	TP	Approved	VP	Created Date	1990-09-08	General geometrical tolerancing ISO 2768	m	General surface finish $R_a$	3.2	Scale	-		
Title												<b>SOLDER 42U</b>			
Article number		-		Drawing number		CD000100		Revision		12		Sheet		1 (1)	

Rev No.	Alteration	Date	Checked	Approved
1	DEBURRING INFO ADDED	2009/03/11	TL	PDM



SHARP EDGES DEBURRED MAX 0,4

ACCORDING TO MQS  
MATERIAL

Drawn ANL	Checked PDM	Approved PDM	Created Date 2007-04-25	General geometrical tolerancing ISO 2768 m	General surface finish $R_a$ 3.2		Scale -
			<b>Title</b> ISO-G 1 1/2" & SOLDER 35,1				
<b>Article number</b> -		<b>Drawing number</b> CD000860		<b>Revision</b> 1		<b>Sheet</b> 1 (1)	