

# B30

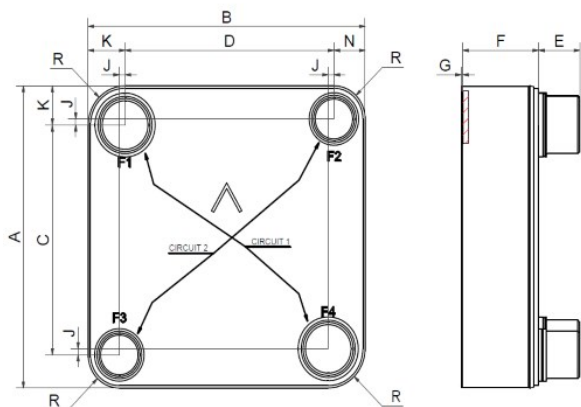
Le B30 est un échangeur thermique asymétrique à courants croisés. Il est particulièrement bien adapté aux applications gaz-liquide. Avec des connexions de 2½ pouces, il accepte des débits d'eau allant jusqu'à 58 m³/h (255 gpm). Il peut être utilisé comme surchauffeur sur conduite d'aspiration des groupes froids jusqu'à 350 kW, comme post-refroidisseur pour compresseurs d'air jusqu'à 175 kW, et comme refroidisseur d'air pour charges moteurs de plus de 1 MW. Nous avons conçu le B30 pour offrir une robustesse supérieure à celle des BPHE ordinaires, aussi bien en termes de charges statiques que cycliques.



## Spécifications de base

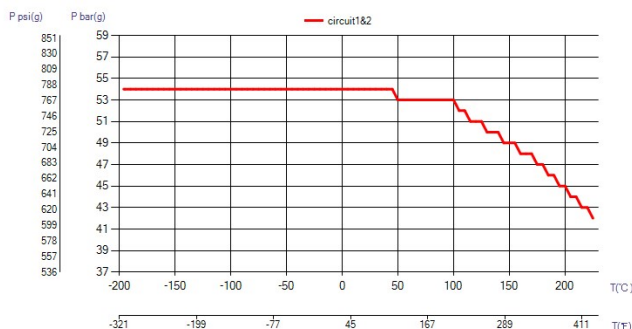
|                                      |  |
|--------------------------------------|--|
| Nombre de plaques max. (NoP)         | 300  |
| Débit volumétrique max.              | 27 m³/h (118.88 gpm)                                 |
| Volume du canal                      | 0.097/0.081 dm³ (0.0034/0.0029 ft³)                  |
| Matières                             | Plaques en acier inoxydable 316/316L, brasage cuivre |
| Poids sans les connexions            | 5.88+(0.18*NoP) kg<br>12.96+(0.397*NoP) lb           |
| Taille la taille des Particules (mm) | 0,9  |

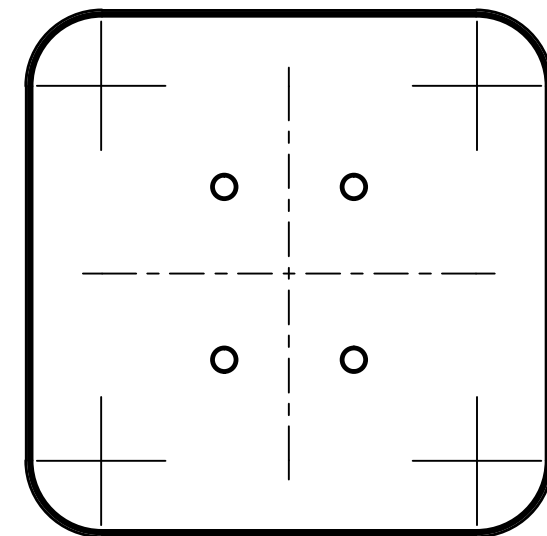
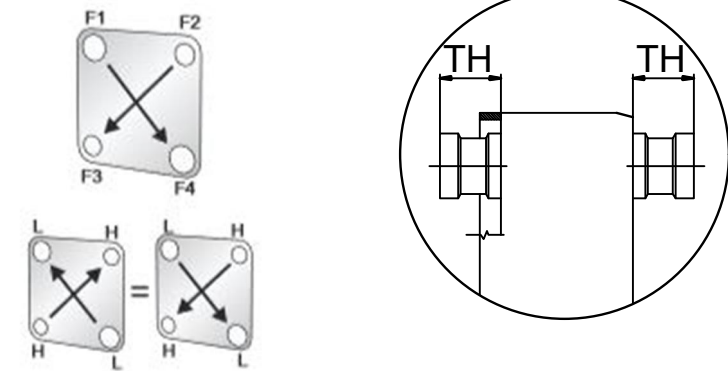
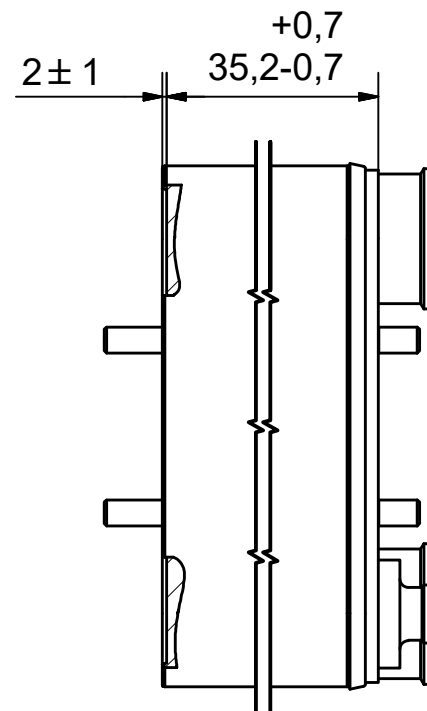
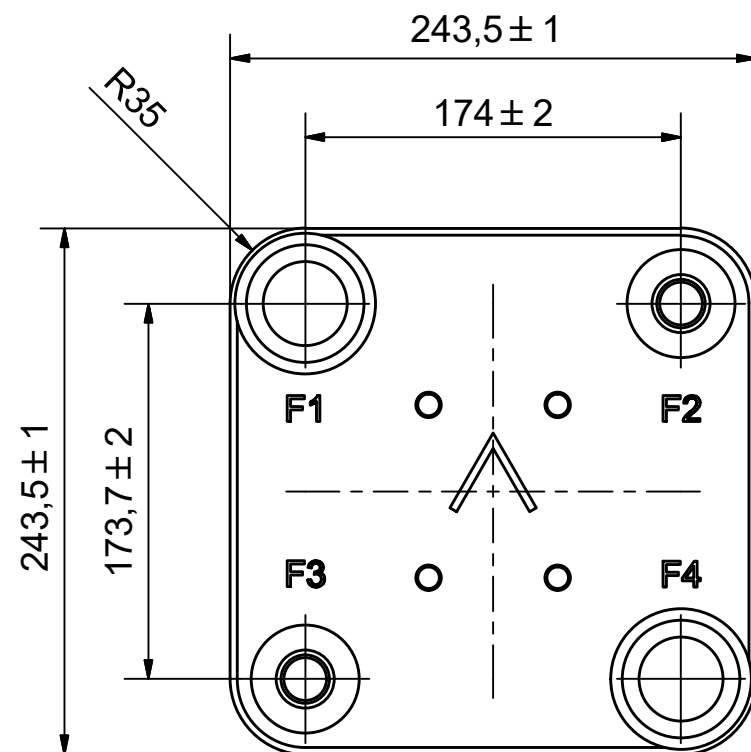
## Les dimensions standard



| #   | MM               | IN              |
|-----|------------------|-----------------|
| A   | 243.50           | 9.59            |
| B   | 243.50           | 9.59            |
| C   | 173.70           | 6.84            |
| D   | 174              | 6.85            |
| F   | 14,00+2,12*(NoP) | 0.55+0.08*(NoP) |
| G   | 2                | 0.08            |
| J   | 7.50             | 0.3             |
| K   | 42.30            | 1.67            |
| L   | 35               | 1.38            |
| N   | 34.80            | 1.37            |
| R   | 35               | 1.38            |
| E_1 | 54               | 2.13            |
| E_2 | 27               | 1.06            |

## PED pression / température







NOTE 1 ALTERNATE MARKING: STICKER OR STAMP

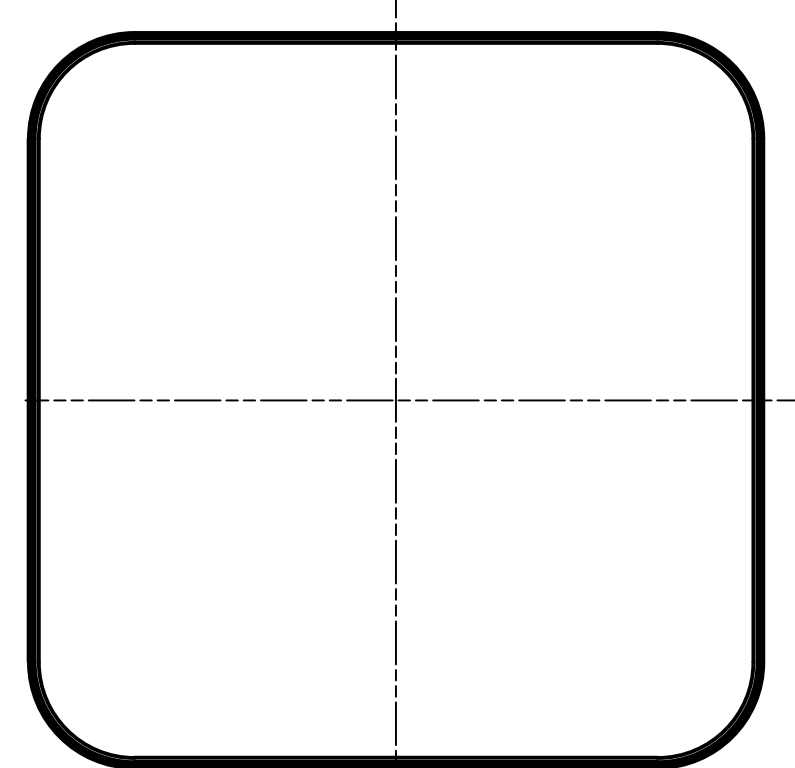
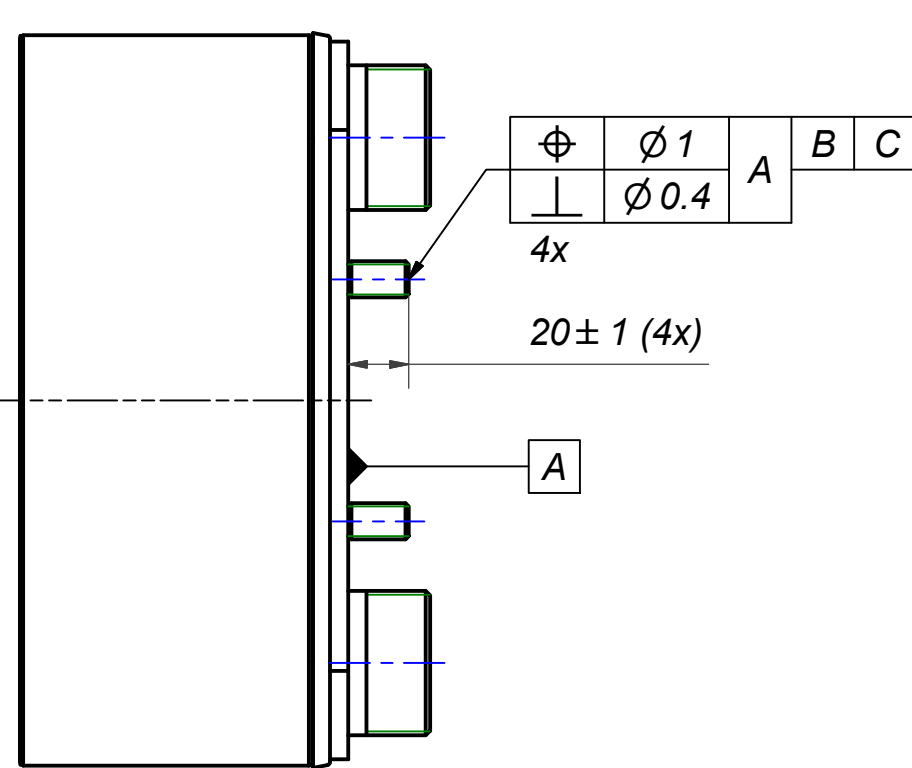
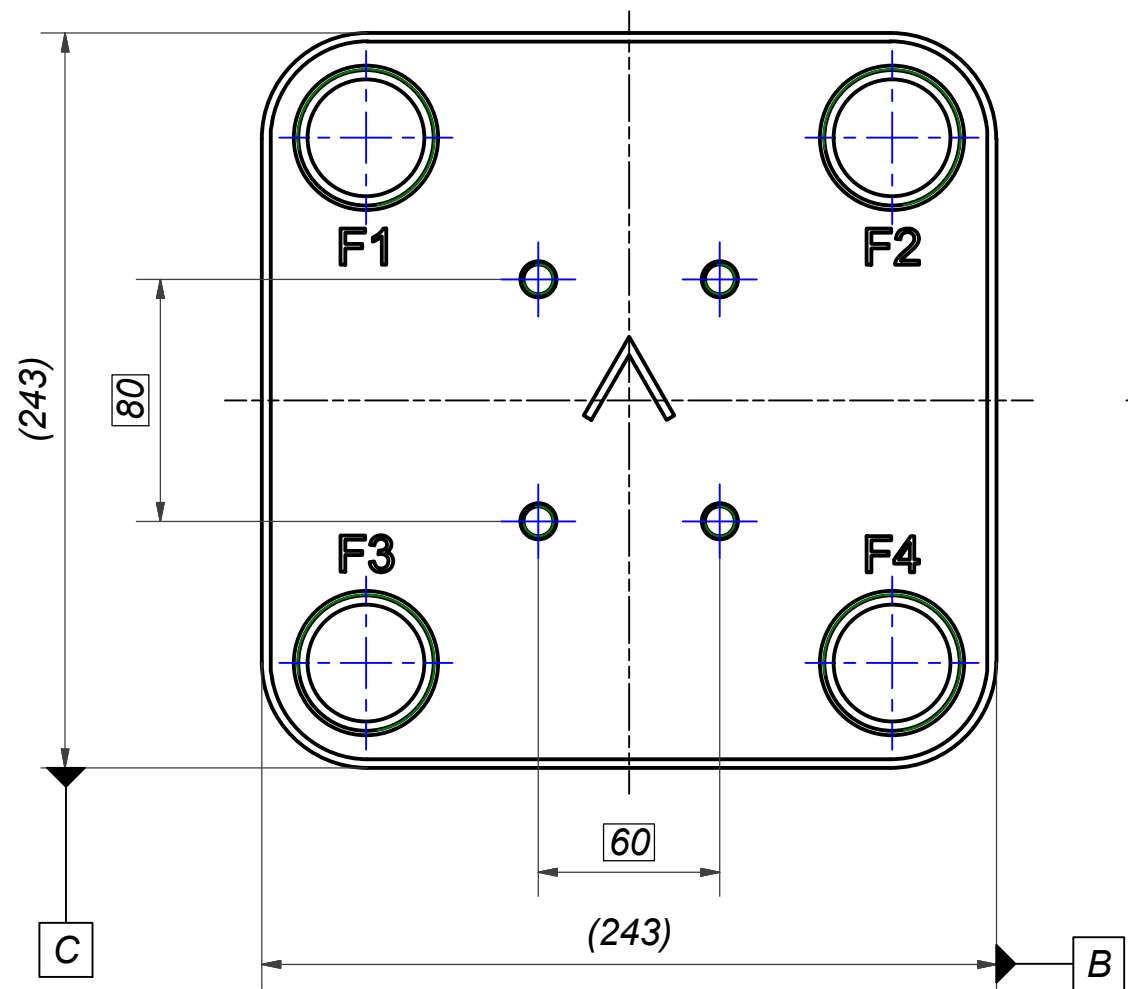
NOTE 2 THIS BPHE HAS A CROSS-CONNECTED CONFIGURATION

**AXINTRA**  
ÉCHANGEURS THERMIQUES

|     |            |   |                 |     |            |   |                 |
|-----|------------|---|-----------------|-----|------------|---|-----------------|
| F4  | 46211      | SOLDER ø54,3, TH = 27.1                             | CD000329        |     |            |   |                 |
| F3  | 45475      | SOLDER 22U, TH = 27.1                               | CD000017        |     |            |   |                 |
| F2  | 45475      | SOLDER 22U, TH = 27.1                               | CD000017        |     |            |   |                 |
| F1  | 46211      | SOLDER ø54,3, TH = 27.1                             | CD000329        |     |            |   |                 |
| F   | 21894      | 30 BOLT LOC F 4x F60x80                             | 00018758_01     | P   | 21907      | 30 STUD BOLT LOC. P 60x80                           | 00024102        |
| Pos | Article No | Title / Denomination, code, material, dimension etc | Drawing No./ref | Pos | Article No | Title / Denomination, code, material, dimension etc | Drawing No./ref |

|  |  |                              |            |                                    |                       |   |  |
|--|--|------------------------------|------------|------------------------------------|-----------------------|---|--|
| Title  |  |                              |            | B30L0x10/1P-SC-H 22U+54.3+22U+54.3 |                       |   |  |
| <br>A DOVER COMPANY |  | Created Date                 | 12/23/2022 | Created By                         | AU                    |  |  |
|  |  | Article/Configuration number | 03360490.0 | Drawing number                     | AU00728813_03360490.0 |   |  |

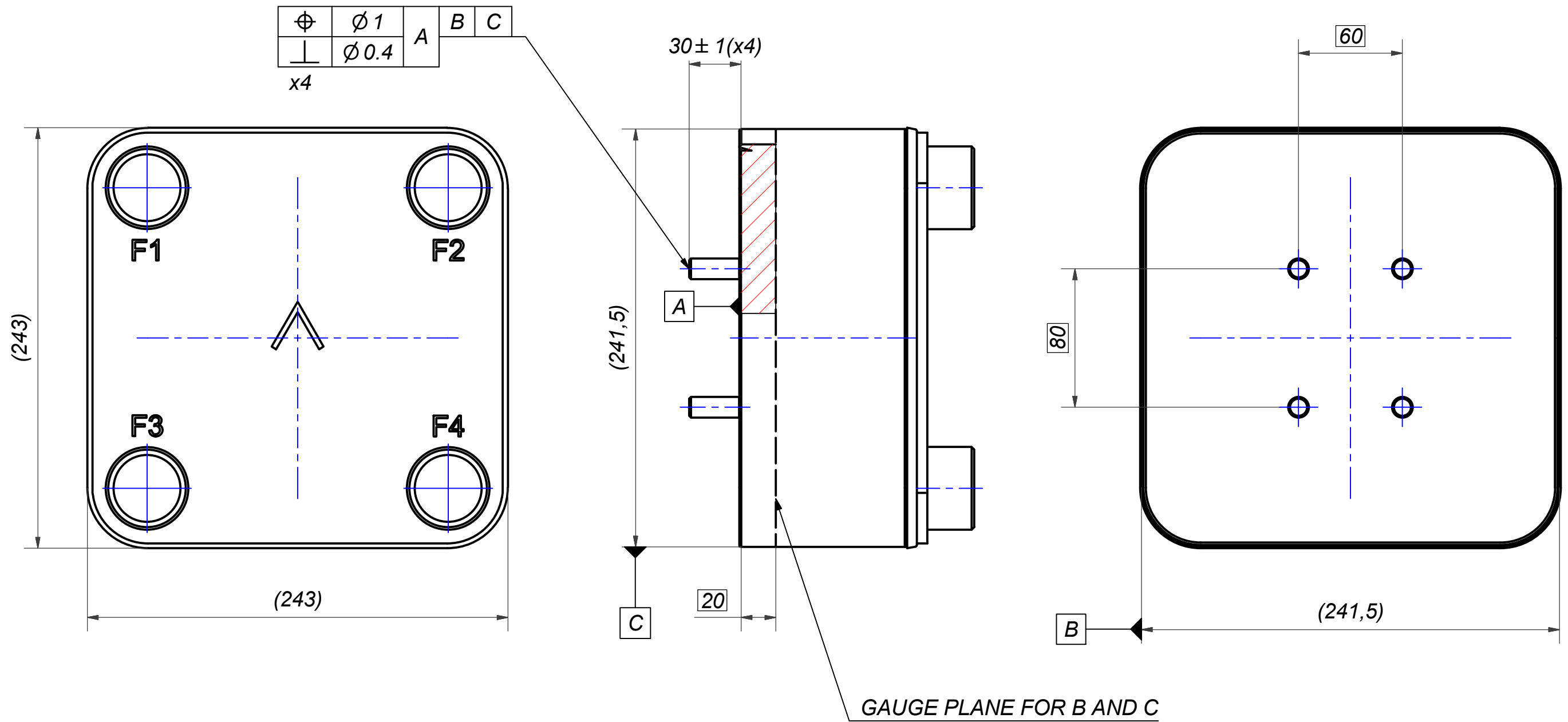
| Rev No | Alteration | Date | Checked | Approved |
|--------|------------|------|---------|----------|
| 00     |            |      |         | PDM      |



© Company Confidential, Property of SWEP International AB

|                |         |                                 |                |   |                                |                           |            |  |
|----------------|---------|---------------------------------|----------------|---|--------------------------------|---------------------------|------------|--|
| 1              | 4       | STUD BOLT M12x20 ART. NO. 45095 |                |   |                                | M12 x 20                  |            |  |
| Item           | QTY     | Description                     |                |   |                                | Drawing / Article         |            |  |
| Drawn          | Checked | Approved                        | Created Date   | General geometrical tolerancing ISO 2768: | General surface finish $R_a$ : | Scale                     | Paper size |  |
| skgl           | PDM     | PDM                             | 2014-08-06     |   |                                | -                         | A3         |  |
|                |         |                                 |                |   |                                | Title                     |            |  |
|                |         |                                 |                |   |                                | 30 STUD BOLT LOC. F 60x80 |            |  |
| Article number |         | Design Type                     | Drawing number | Revision                                  | Sheet                          |                           |            |  |
| 21894          |         | CG                              | 00018758       | 00  | 1 (1)                          |                           |            |  |

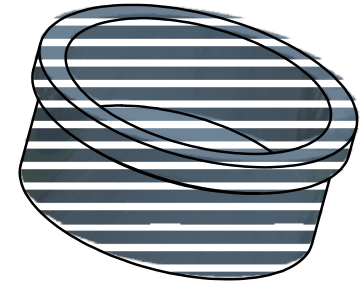
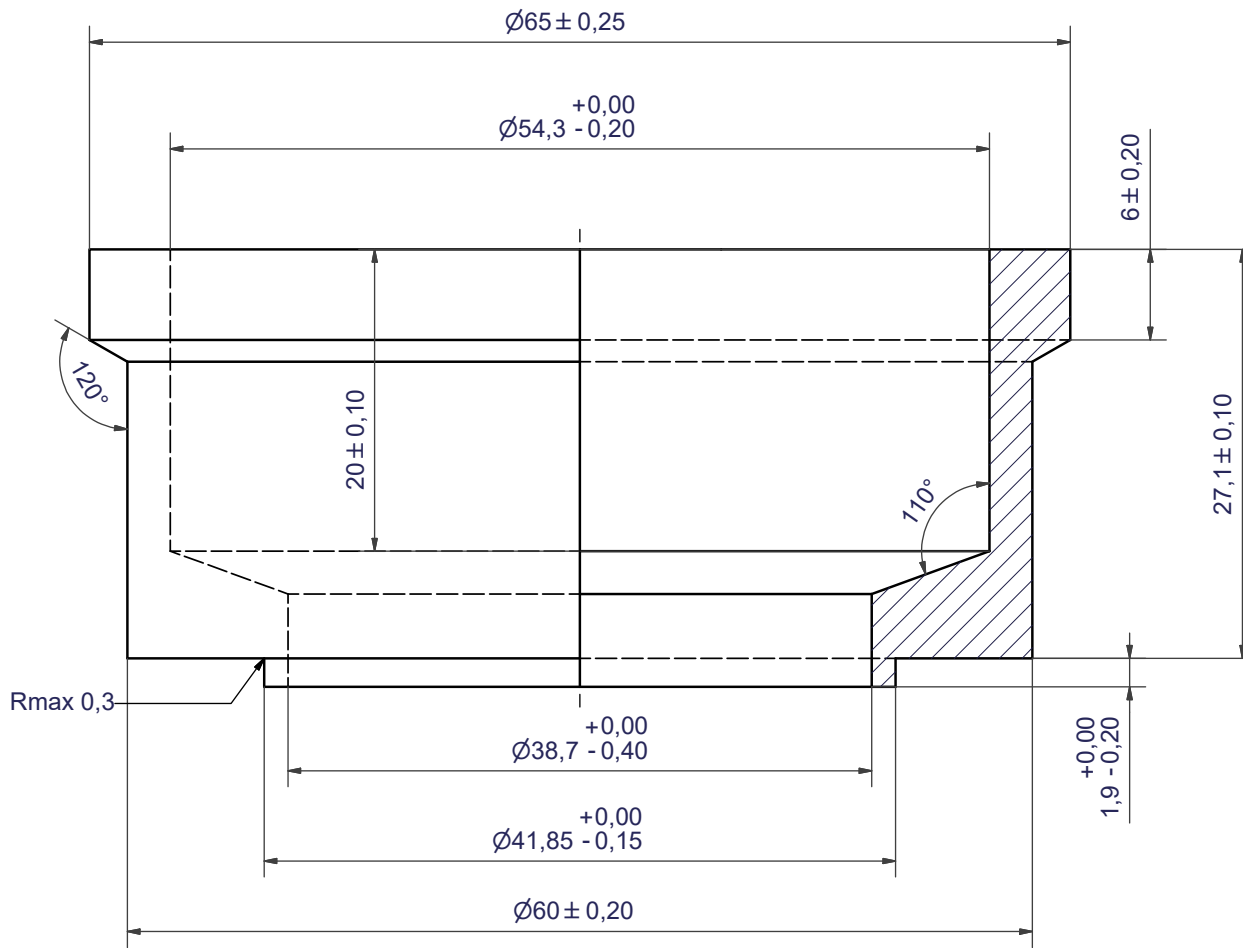
| Rev No | Alteration | Date | Checked | Approved |
|--------|------------|------|---------|----------|
| 00     |            |      |         | PDM      |



© Company Confidential, Property of SWEP International AB

|                |         |                                 |                |   |                                |                           |            |  |
|----------------|---------|---------------------------------|----------------|---|--------------------------------|---------------------------|------------|--|
| 1              | 4       | STUD BOLT M12x30 ART. NO. 45522 |                |   |                                | ISO 4026-M12x30           |            |  |
| Item           | QTY     | Description                     |                |   |                                | Drawing / Article         |            |  |
| Drawn          | Checked | Approved                        | Created Date   | General geometrical tolerancing ISO 2768: | General surface finish $R_a$ : | Scale                     | Paper size |  |
| cnvg           | PDM     | PDM                             | 2015-05-11     | -   | $R_a$                          | -                         | A3         |  |
|                |         |                                 |                |   |                                | Title                     |            |  |
|                |         |                                 |                |   |                                | 30 STUD BOLT LOC. P 60x80 |            |  |
| Article number |         | Design Type                     | Drawing number |   | Revision                       | Sheet                     |            |  |
| 21907          |         | CG                              | 00024101       |   | 00                             | 1 (1)                     |            |  |


| Rev No. | Alteration                         | Date       | Checked | Approved |
|---------|------------------------------------|------------|---------|----------|
| 6       | Changed ø65 dim tolerance to ±0,25 | 2010/01/15 | ANO     | PDM      |



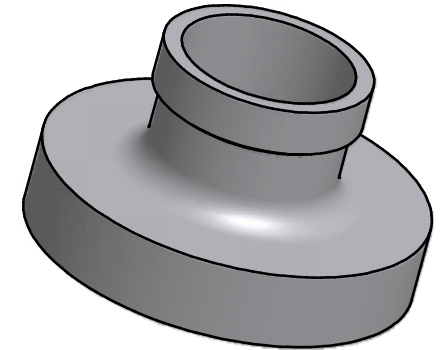
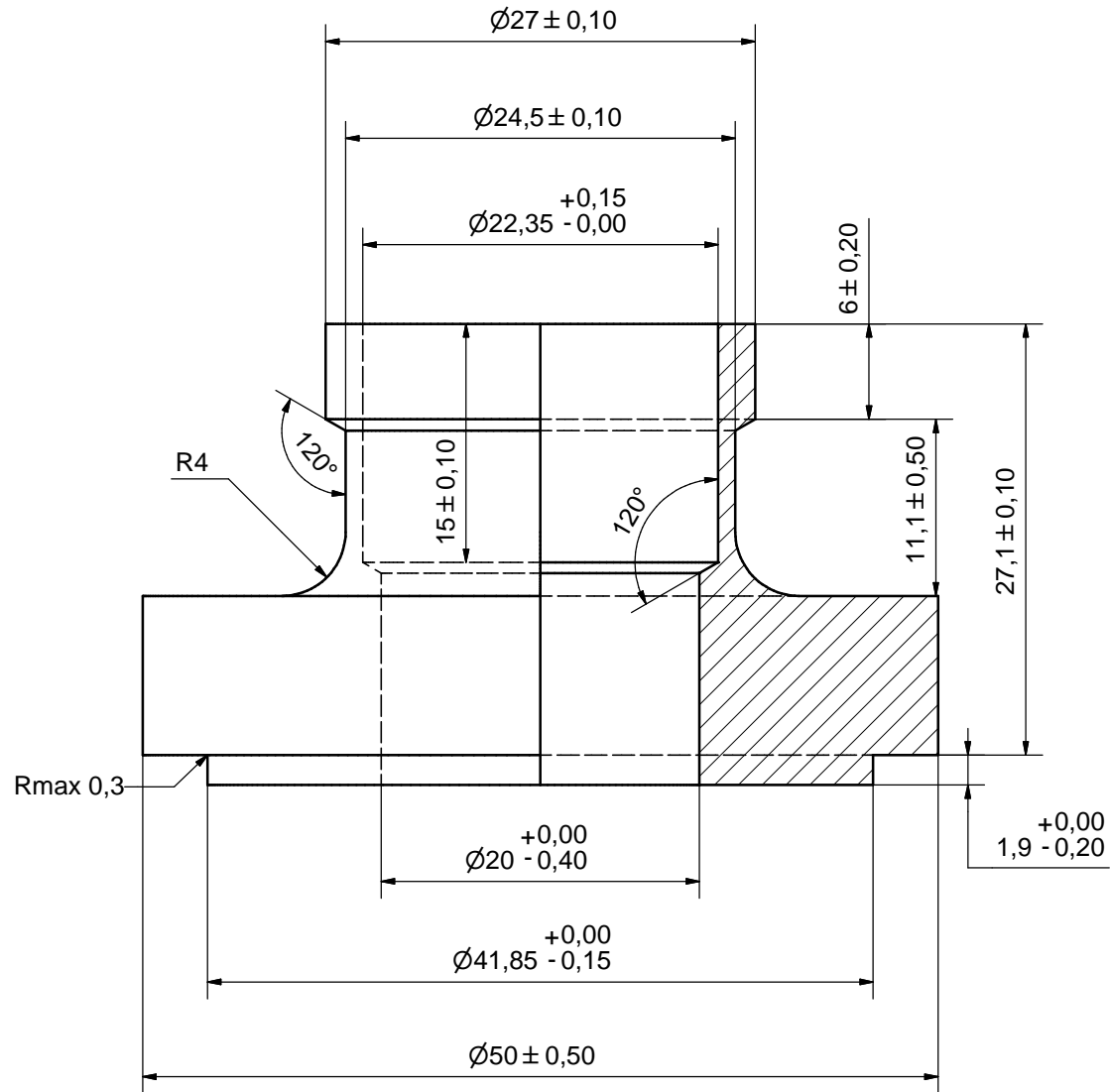
SHARP EDGES DEBURRED MAX 0,4

ACCORDING TO MQS

MATERIAL


|   |         |                |                     |  |                               |       |
|---|---------|----------------|---------------------|--|-------------------------------|-------|
| Drawn   | Checked | Approved       | Created Date        | General geometrical tolerancing ISO 2768 | Surface finish R <sub>a</sub> | Scale |
| JA  | EMS     | BOS            | 1997-04-03          | m  | 3.2                           | -     |
|  |         |                | <b>SOLDER ø54,3</b> |  |                               |       |
| Article number  |         | Drawing number |                     | Revision                                 | Sheet                         |       |
| -   |         | CD000329       |                     | 6  | 1 (1)                         |       |

| Rev No. | Alteration           | Date       | Checked | Approved |
|---------|----------------------|------------|---------|----------|
| 9       | DEBURRING INFO ADDED | 2009/03/10 | TL      | PDM      |



SHARP EDGES DEBURRED MAX 0,4

ACCORDING TO MQS  
MATERIAL

|   |                |                            |                            |   |                                     |            |
|---|----------------|----------------------------|----------------------------|---|-------------------------------------|------------|
| Drawn<br>TM   | Checked<br>BOS | Approved<br>BOS            | Created Date<br>1993-05-28 | General geometrical tolerancing ISO 2768<br>m | General surface finish $R_a$<br>3.2 | Scale<br>- |
|  |                |                            | Title<br><b>SOLDER 22U</b> |   |                                     |            |
| Article number<br>-   |                | Drawing number<br>CD000017 |                            | Revision<br>9                                 | Sheet<br>1 (1)                      |            |