

B35

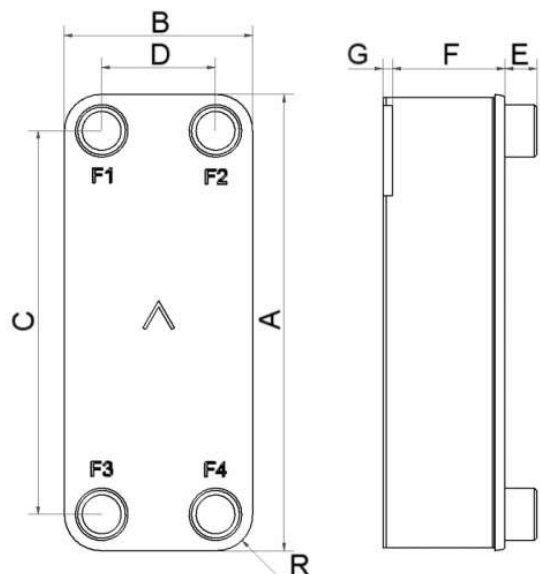
Le B35 est le produit idéal pour de nombreuses applications : chauffage urbain, récupération de chaleur, cogénération, refroidissement d'huile de transmission et de moteur. Il est le choix parfait pour bénéficier de transferts de chaleur efficaces et de faibles pertes de charges dans des systèmes de conduites jusqu'à 2 pouces et des débits d'eau jusqu'à 27 m³/h (118.8 gpm).



Spécifications de base

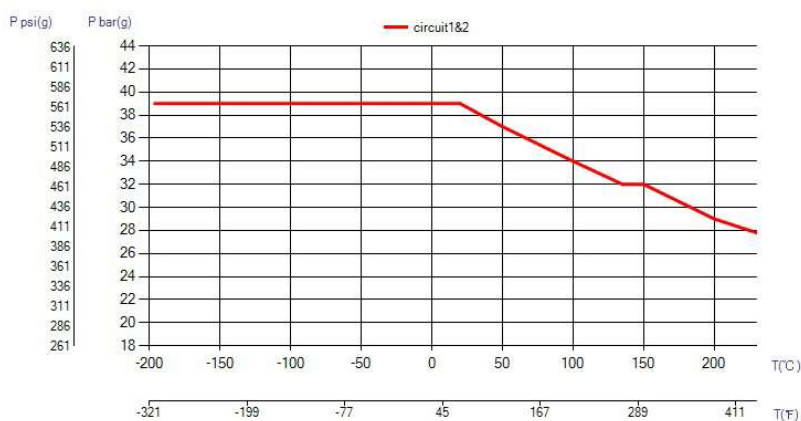
Nombre de plaques max. (NoP)	250
Débit volumétrique max.	27,4 m ³ /h (17.61 gpm)
Volume du canal	0.179/0.179 dm ³ (0.0063/0.0063 ft ³)
Matières	Plaques en acier inoxydable 316, brasage cuivre
Poids sans les connexions	905.00+(0.34*NoP) kg 1995.16+(74.956*NoP) lb

Les dimensions standard

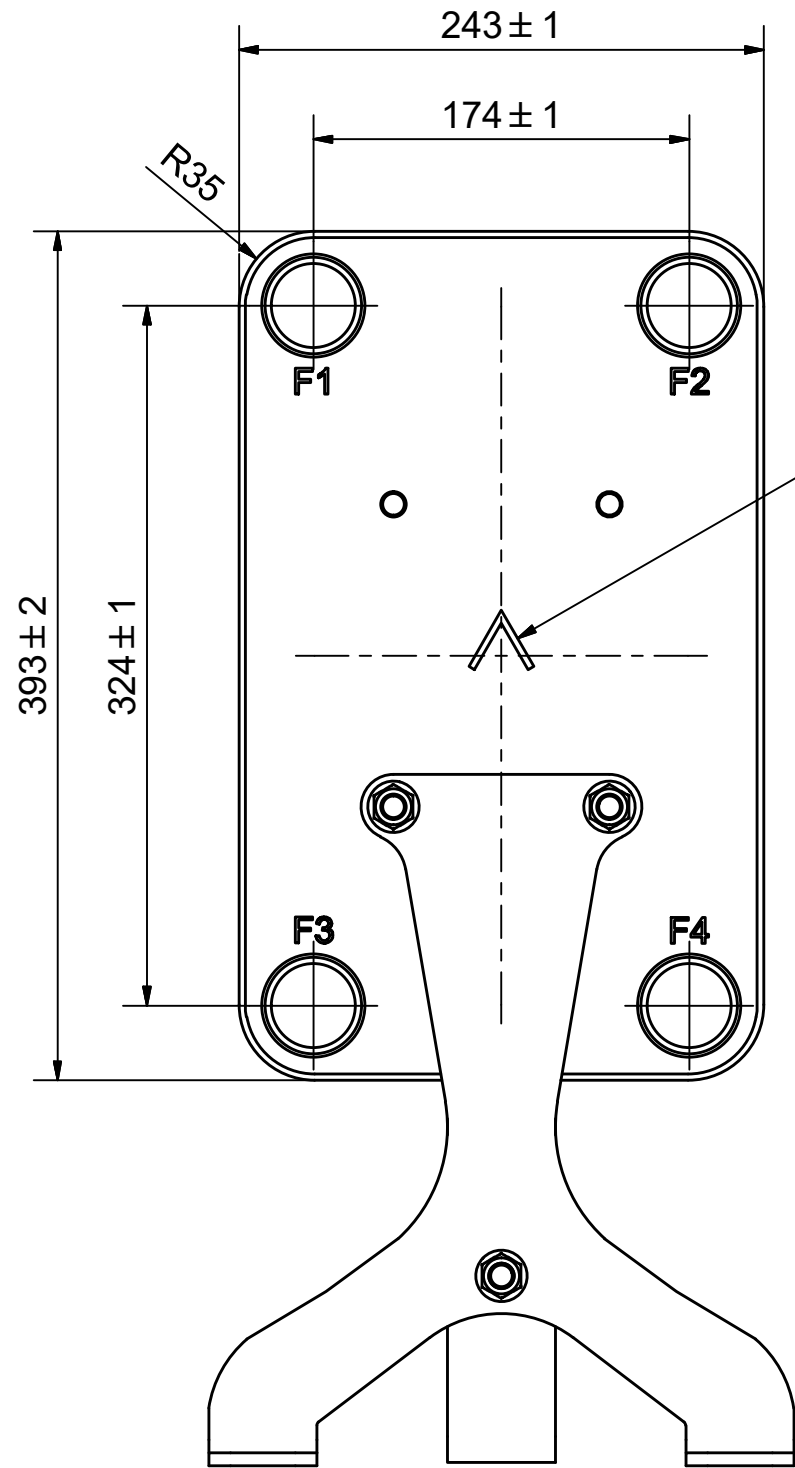


#	MM	N
A	393	15.47
B	243	9.57
C	324	12.76
D	174	6.85
F	8.00+2.34*(NoP)	0.31+0.09*(NoP)
G	3	0.12
R	35	1.38
E_1	27	1.06

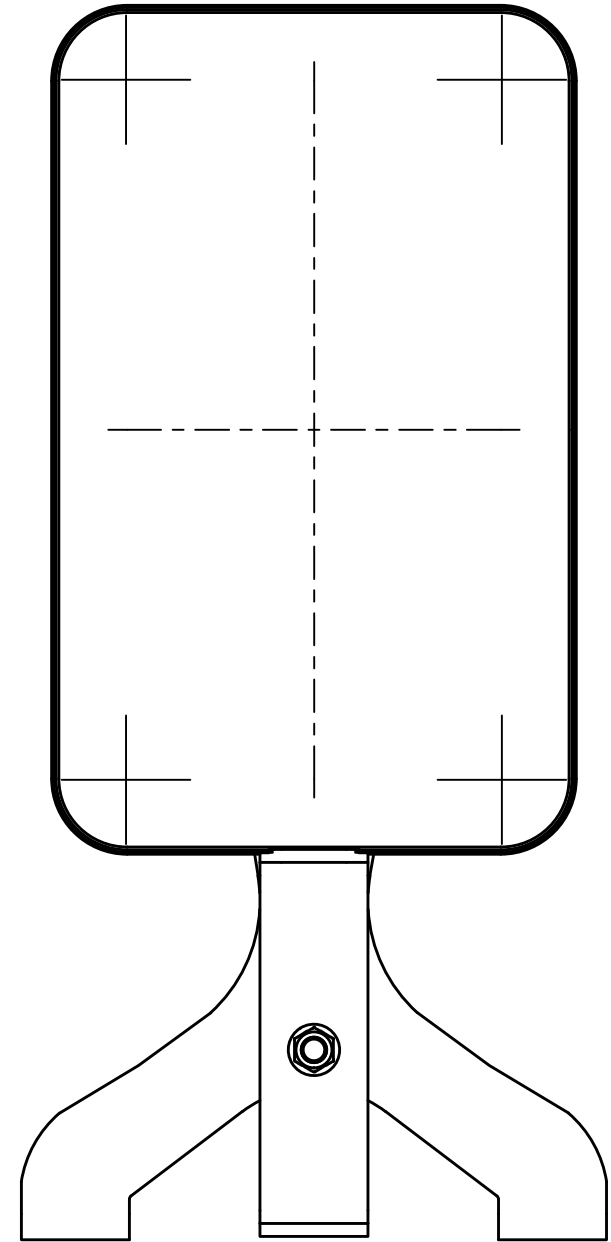
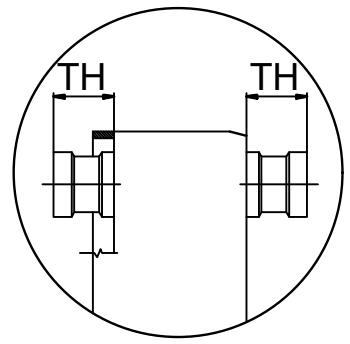
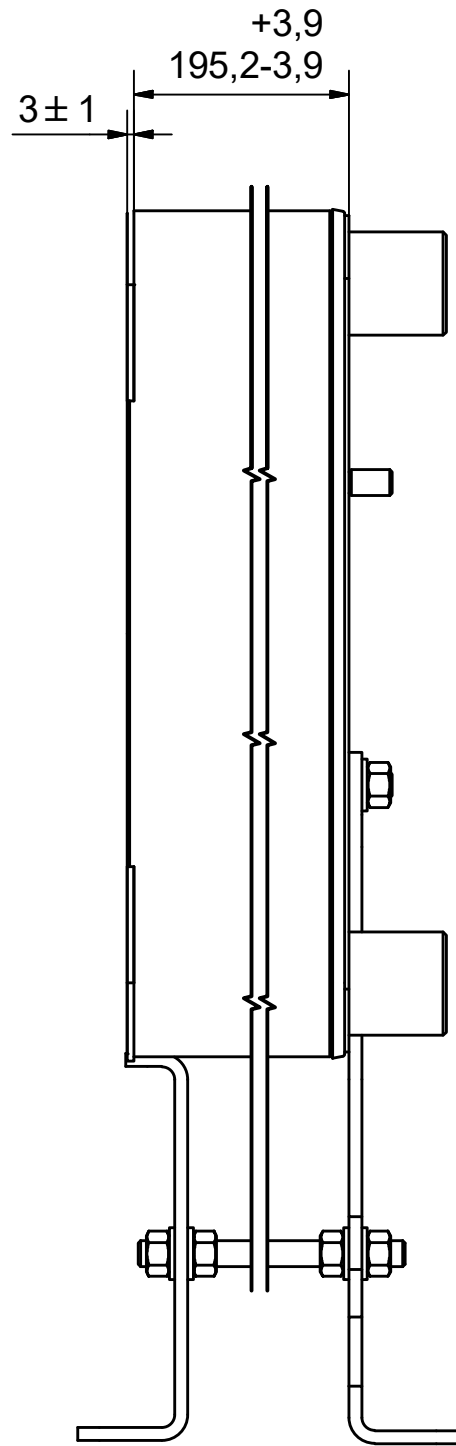
PED pression / température



ÉCHANGEURS THERMIQUES



NOTE 1



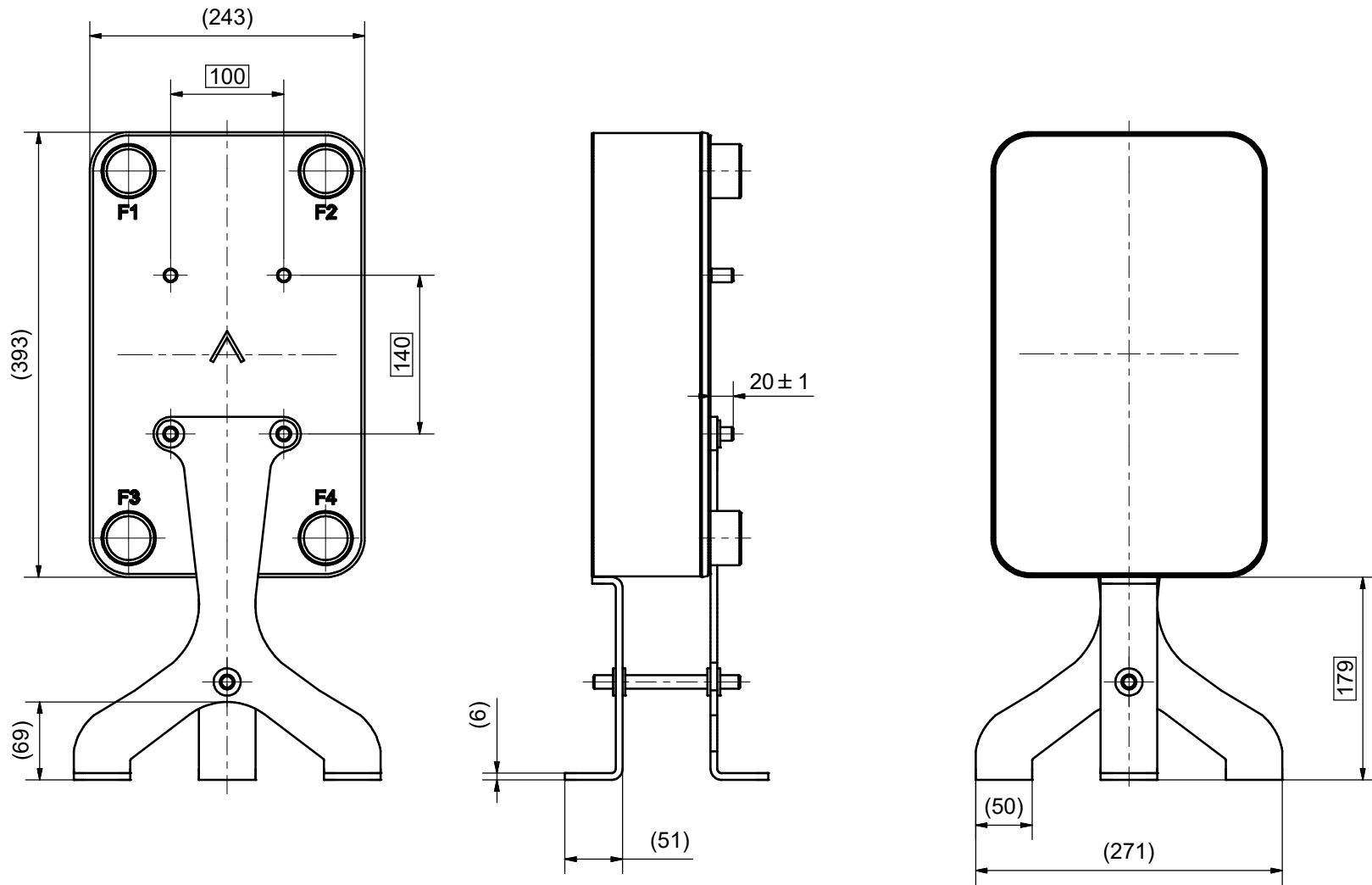
AXINTRA
ÉCHANGEURS THERMIQUES

NOTE 1 ALTERNATE MARKING: STICKER OR STAMP

F4	45310	ISO-G 1 1/2 , TH = 45.1	CD000052
F3	45310	ISO-G 1 1/2 , TH = 45.1	CD000052
F2	45310	ISO-G 1 1/2 , TH = 45.1	CD000052
F1	45310	ISO-G 1 1/2 , TH = 45.1	CD000052
F	28017	B35/B60 SUPPORT LEG	CG350007_1
F	21112	B35 BOLT LOC F 4x C140x100	CG350001_1

Pos	Article No	Title / Denomination, code, material, dimension etc	Drawing No./ref	Pos	Article No	Title / Denomination, code, material, dimension etc	Drawing No./ref
-----	------------	---	-----------------	-----	------------	---	-----------------

Title B35Hx80/1P-SC-S 4x1 1/2"			
	Created Date 6/24/2022	Created By AU	
	Article/Configuration number 0256008.0	Drawing number AU00703180_0256008.0	

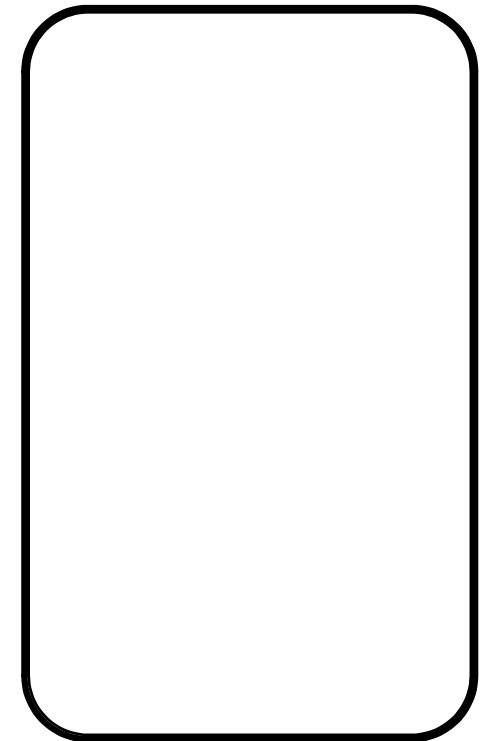
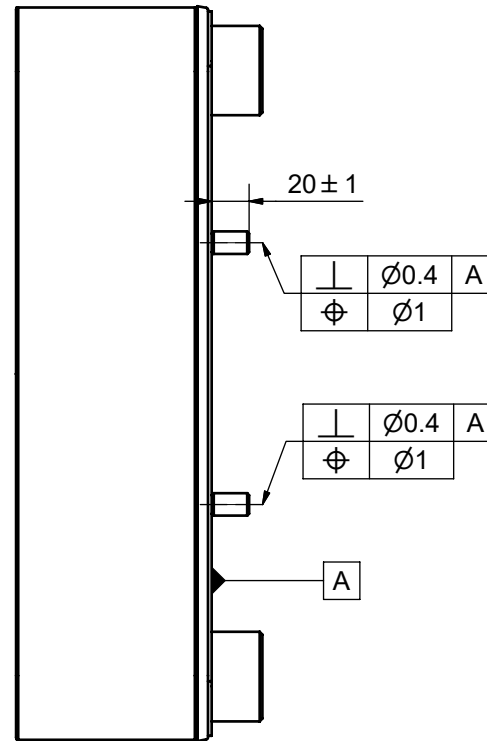
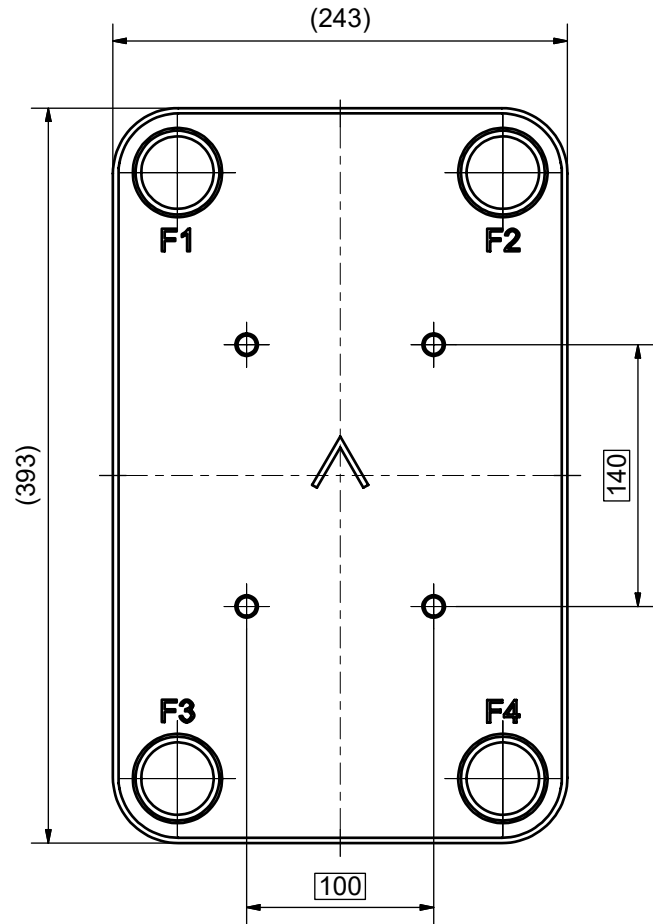


Note 1: Requires stud bolt option 21112 (F-side) or 21114 (P-side) for B35.
 Requires stud bolt option 21244 (F-side) or 21246 (P-side) for B60.

Note 2 The model shown is a B35 and the studbolt option is 21112.

2	1	REAR SUPPORT LEG ART. NO. 28027	CC000165
3	1	THREADED BAR M12	-
4	6	WASHER ART. NO 45524	13x24x2.5
7	4	NUT M12 M6M 8M FZB	-
7	1	B35 SUPPORT LEG ART. NO. 28028	CC000163
8	2	R-LOCKNUT M12 A2 DIN 985	-
IT	QTY	TITLE	Drawing No.
Drawn	Checked	Approved	Created Date
JT	PDM	PDM	2008-09-25
General geometrical tolerancing ISO 2768		General surface finish R_a	
m		3.2	
Title			Scale
B35/B60 SUPPORT LEG			-
Article number		Drawing number	Revision
28017/-18/-19		CG350007	-
Sheet			1 (1)

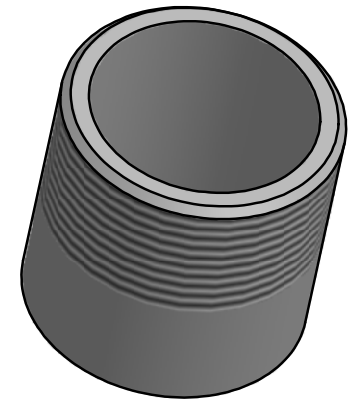
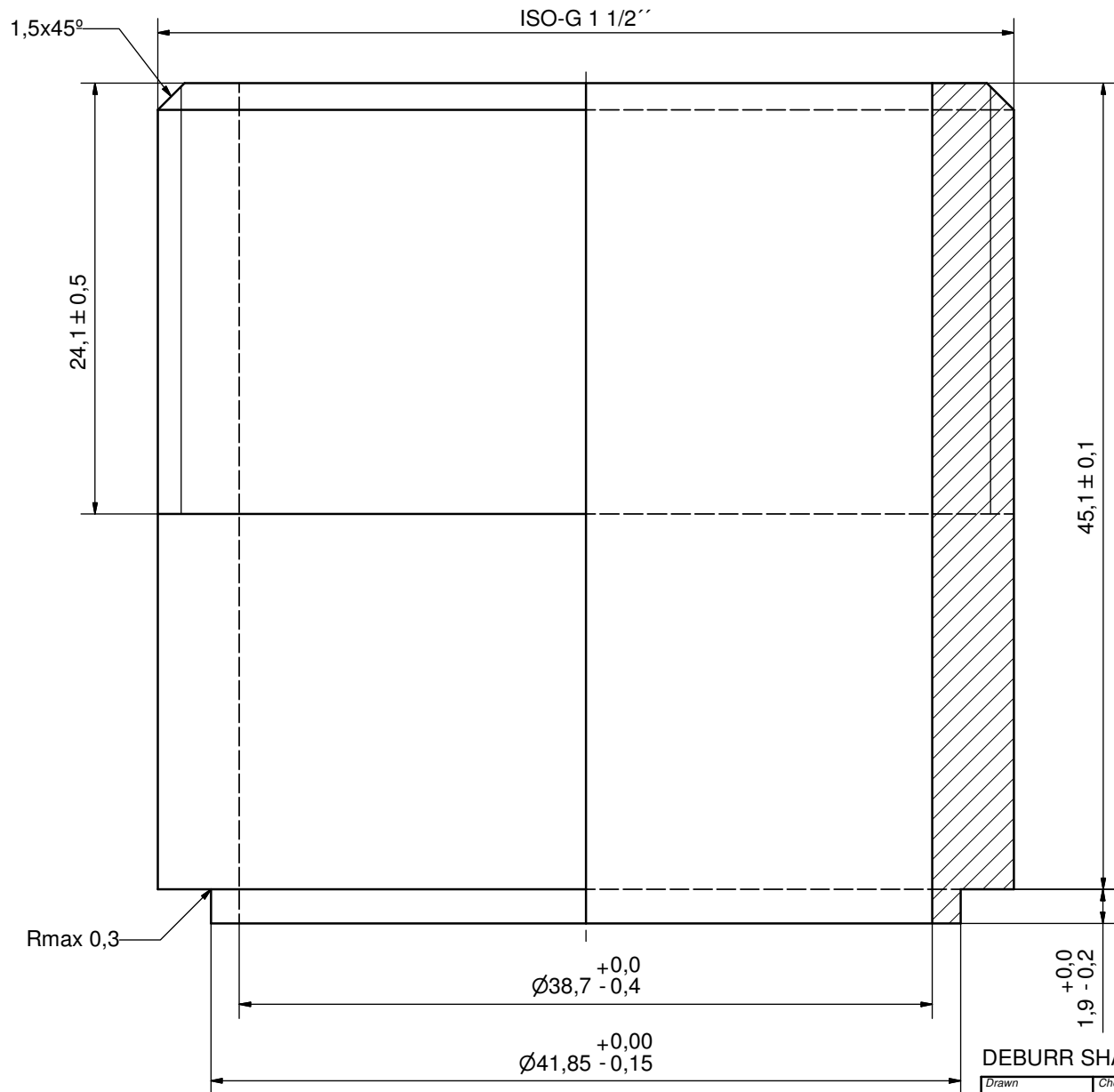
Rev No.	Alteration	Date	Checked	Approved
2	REDRAWN IN INVENTOR	2004/12/10	PDM	PDM



© Company Confidential, Property of SWEP International AB


1	4	STUD BOLT M12 x 20, ART. NO. 45095	M12 x 20
ITE	QTY	DESCRIPTION	Drawing No.
Drawn JA	Checked PDM	Approved PDM	Created Date 2004/10/12
		General geometrical tolerancing ISO 2768 m	General surface finish R_a 3.2
Title B35 BOLT LOC F 4x C140x100			Scale 1:1
Article number 21112		Drawing number CG350001	Revision 2
		Sheet 1 (1)	

Rev No.	Alteration	Date	Checked	Approved
8	ADDED DEBURR AND MATERIAL INFORMATION	2009/07/27	RJ	PDM



DEBURR SHARP EDGES; MAX 0.4

ACCORDING TO MQS
MATERIAL

Drawn	Checked	Approved	Created Date	General geometrical tolerancing ISO 2768	General surface finish R_a	Scale
EG	TP	VP	1991-03-11	m	3.2	4:1
			ISO-G 1 1/2			
Article number		Drawing number		Revision	Sheet	
-		CD000052		8	1 (1)	

© Company Confidential. Property of SWEP International AB

AXINTRA
ÉCHANGEURS THERMIQUES