

B400T

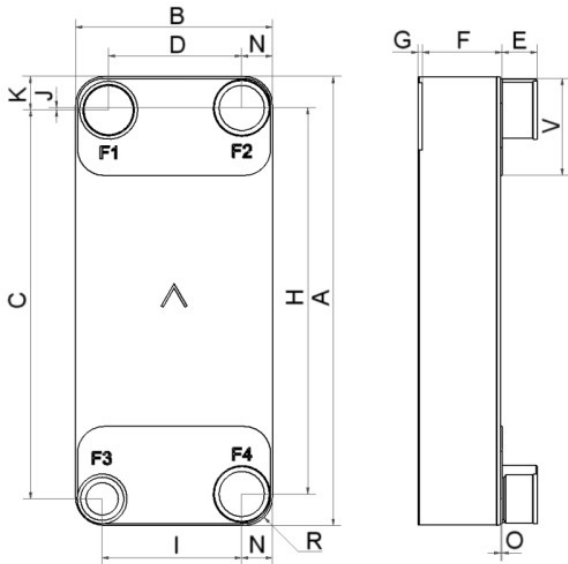
Le B400T a été conçu pour fonctionner avec une très grande efficacité à haute capacité. Il supporte des solutions compactes dans des applications de chiller exigeantes.



Spécifications de base

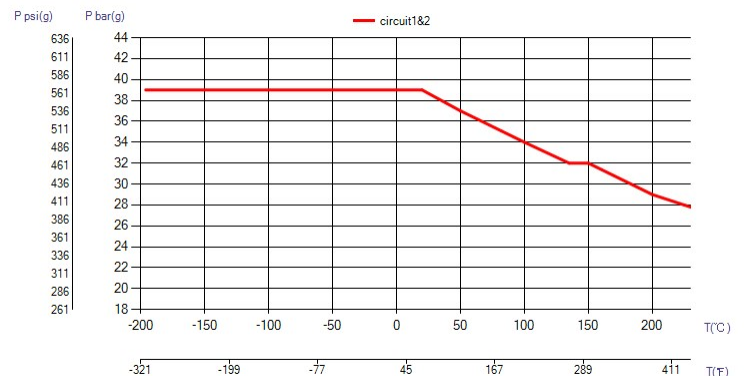
Nombre de plaques max. (NoP)	280
Débit volumétrique max.	83 m³/h (365.44 gpm)
Volume du canal	0.403/0.403 dm³ (0.0142/0.0142 ft³)
Matières	Plaques en acier inoxydable 316/316L, brasage cuivre
Poids sans les connexions	15.43+(0.639*NoP) kg 34.02+(1.409*NoP) lb

Les dimensions standard

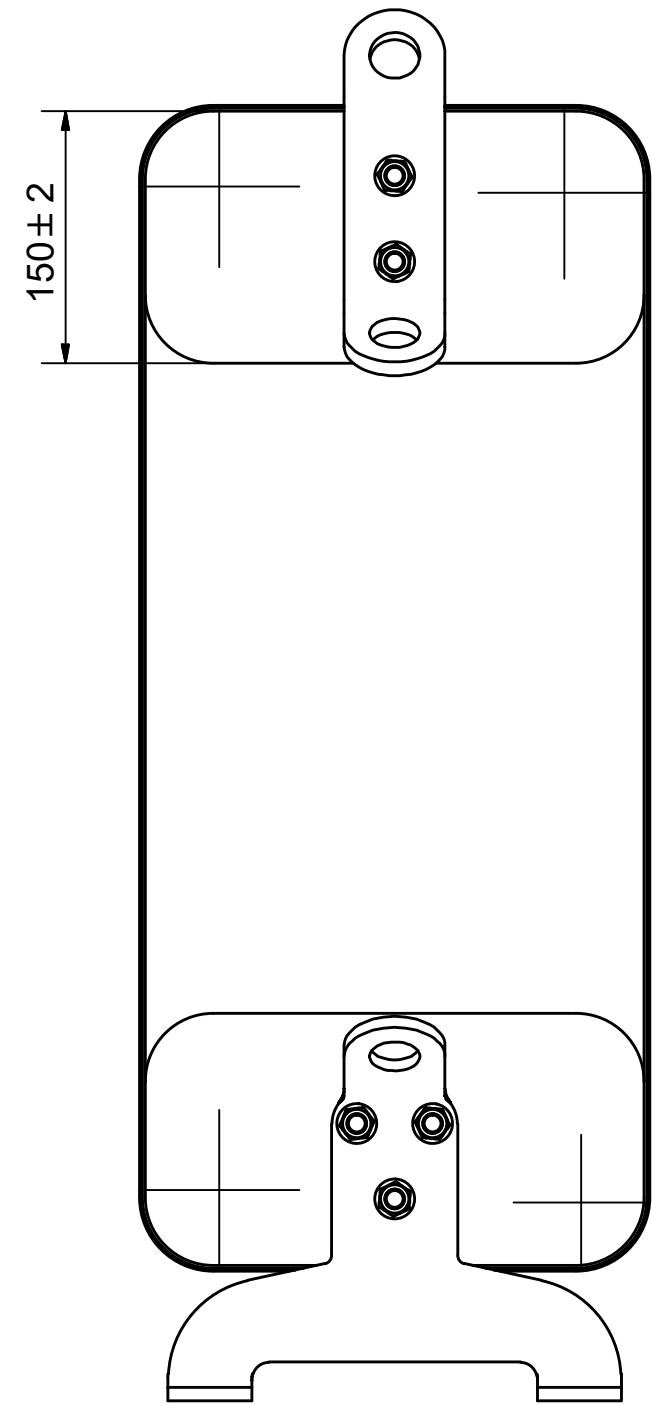
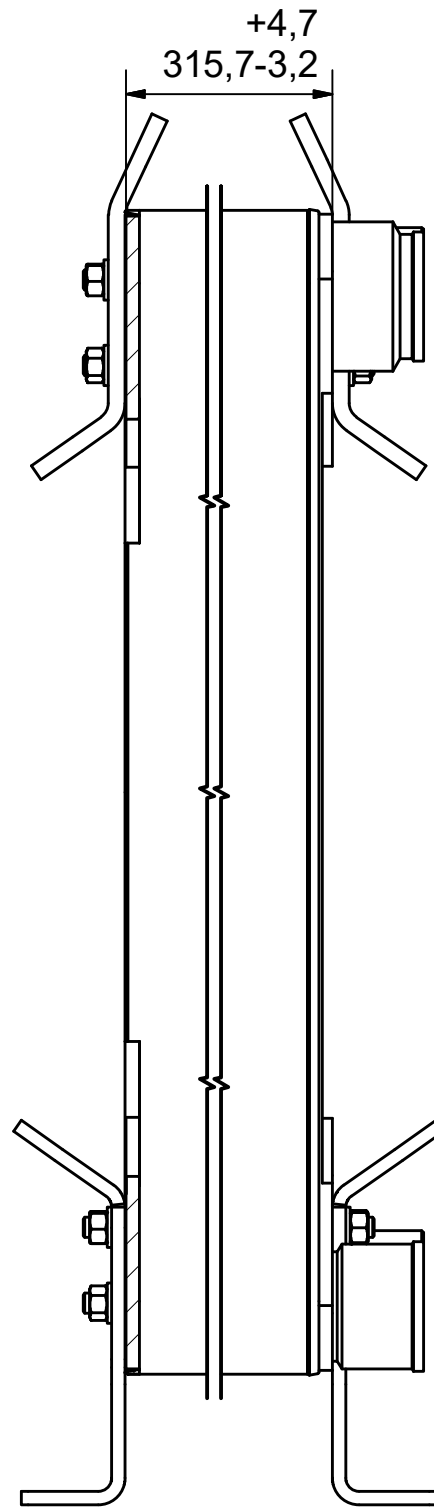
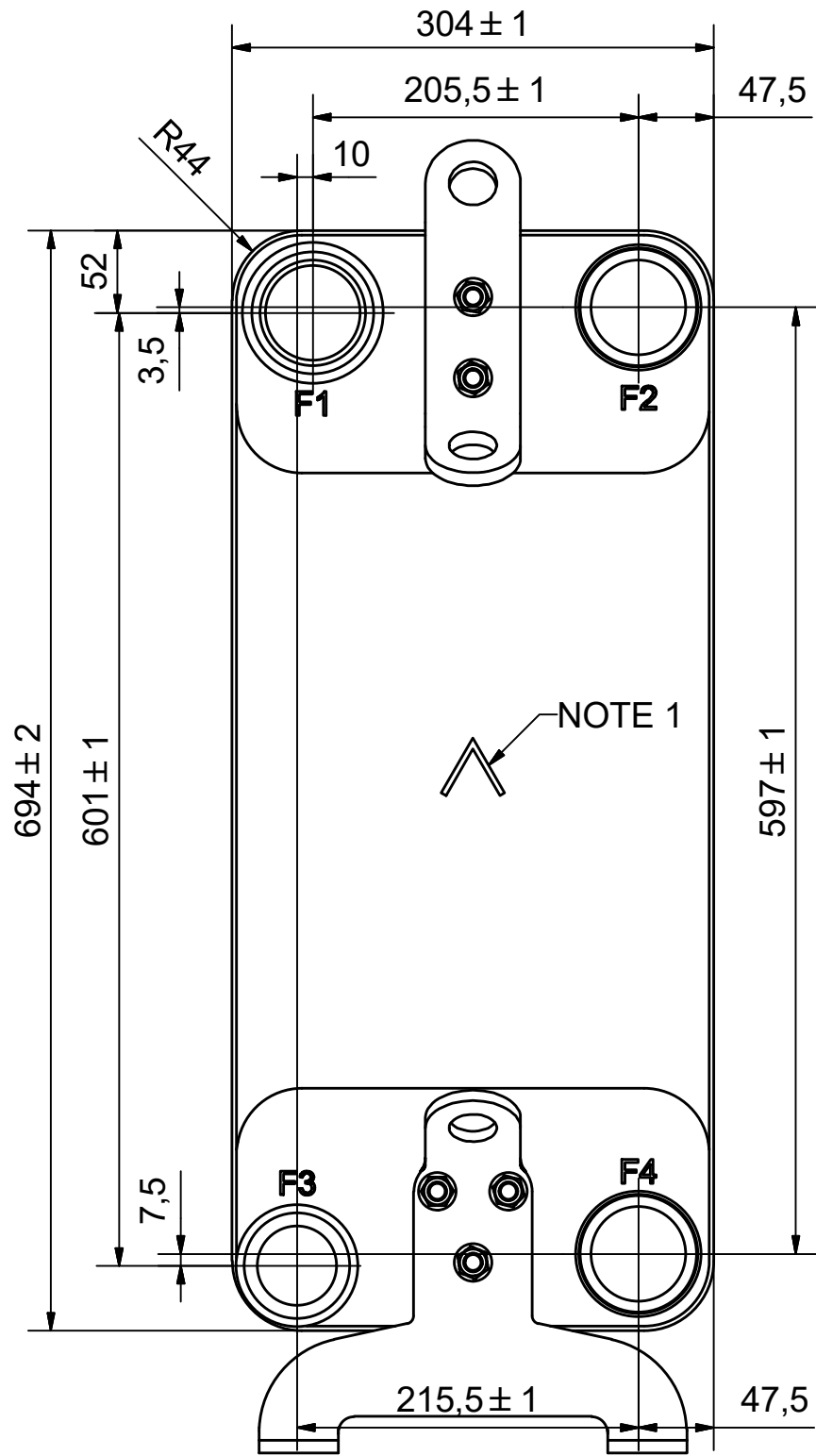


#	MM	IN
A	694	27.32
B	304	11.97
C	601	23.66
D	205.50	8.09
F	18,00+2,29*(NoP)	70.87+9.02*(NoP)
G	0	0
H	597	23.5
I	215.50	8.48
J	3.50	0.14
K	52	2.05
N	47.50	1.87
O	2	0.08
R	44	1.73
V	150	5.91
E_1	54	2.13

PED pression / température



© Company Confidential, Property of SWEP International AB




NOTE 1 ALTERNATE MARKING: STICKER OR STAMP

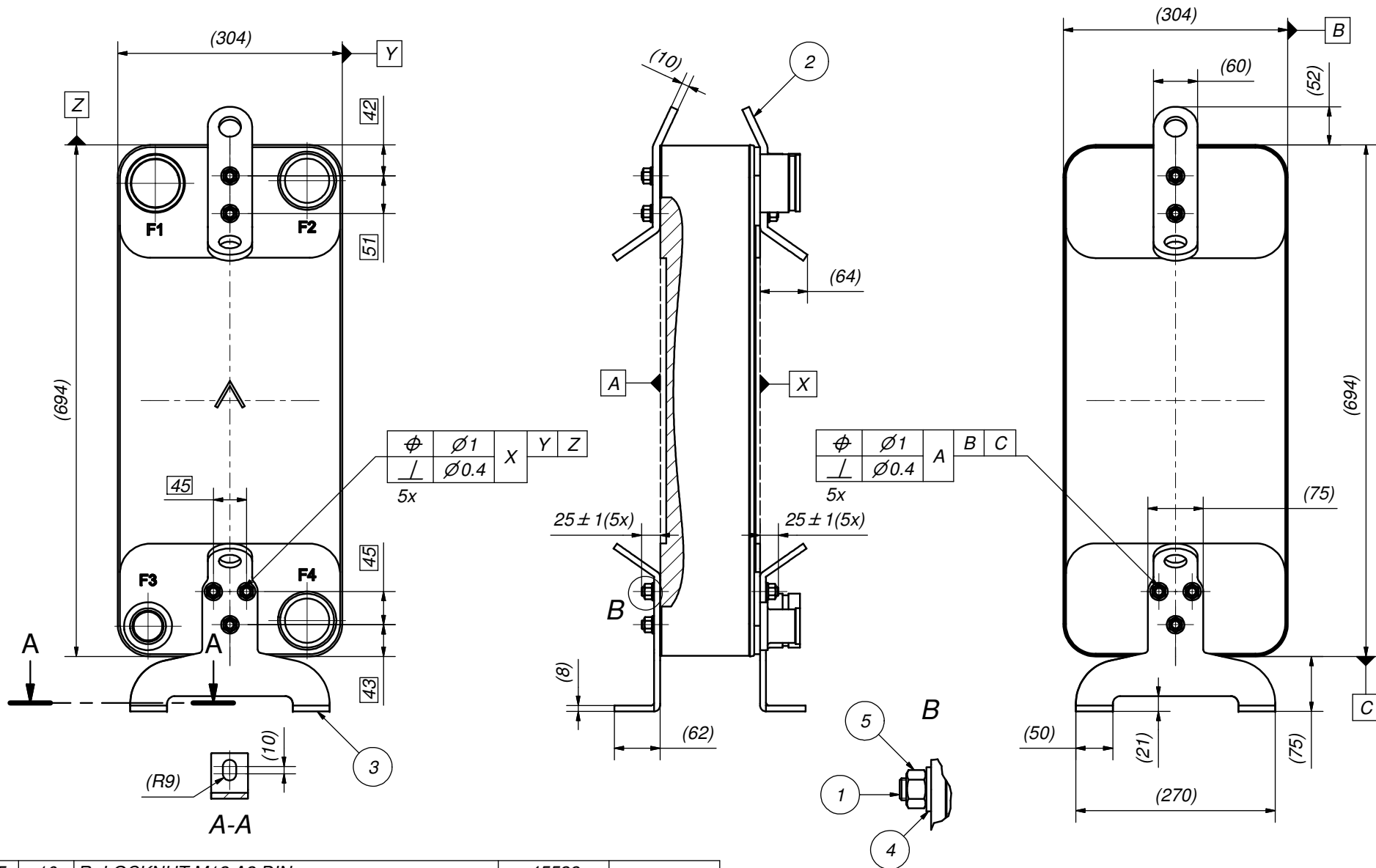
AXINTRA
ÉCHANGEURS THERMIQUES

F4	46090	ISO-G 2 1/2, TH = 54.2	CD000288
F3	46464	SOLDER ø66,85, TH = 54.2	CD000370
F2	46090	ISO-G 2 1/2, TH = 54.2	CD000288
F1	31497	SOLDER ø66,85, TH = 54.2	CD000571
F	28247	BN400 COMPLETE OPTION SET	CG400002_1

Pos	Article No	Title / Denomination, code, material, dimension etc	Drawing No./ref	Pos	Article No	Title / Denomination, code, material, dimension etc	Drawing No./ref
-----	------------	---	-----------------	-----	------------	---	-----------------

Title B400THx130/1P-SC-S 66.85+66.85+2x2 1/2"			
 A DOVER COMPANY		Created Date 11/17/2022	Created By AU
		Article/Configuration number 0235227.0	Drawing number AU00725060_0235227.0

Rev No	Alteration	Date	Checked	Approved
03	GENERAL DRAWING UPDATION & ADDED THICKNESS DIMENSION OF HANGER	9/10/2012	INJRJ	PDM

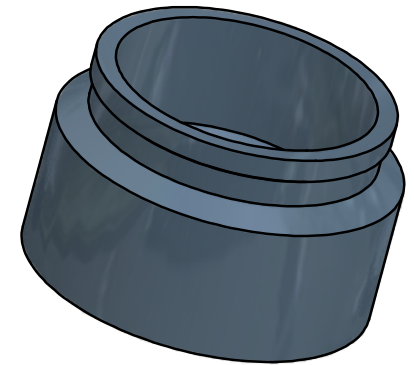
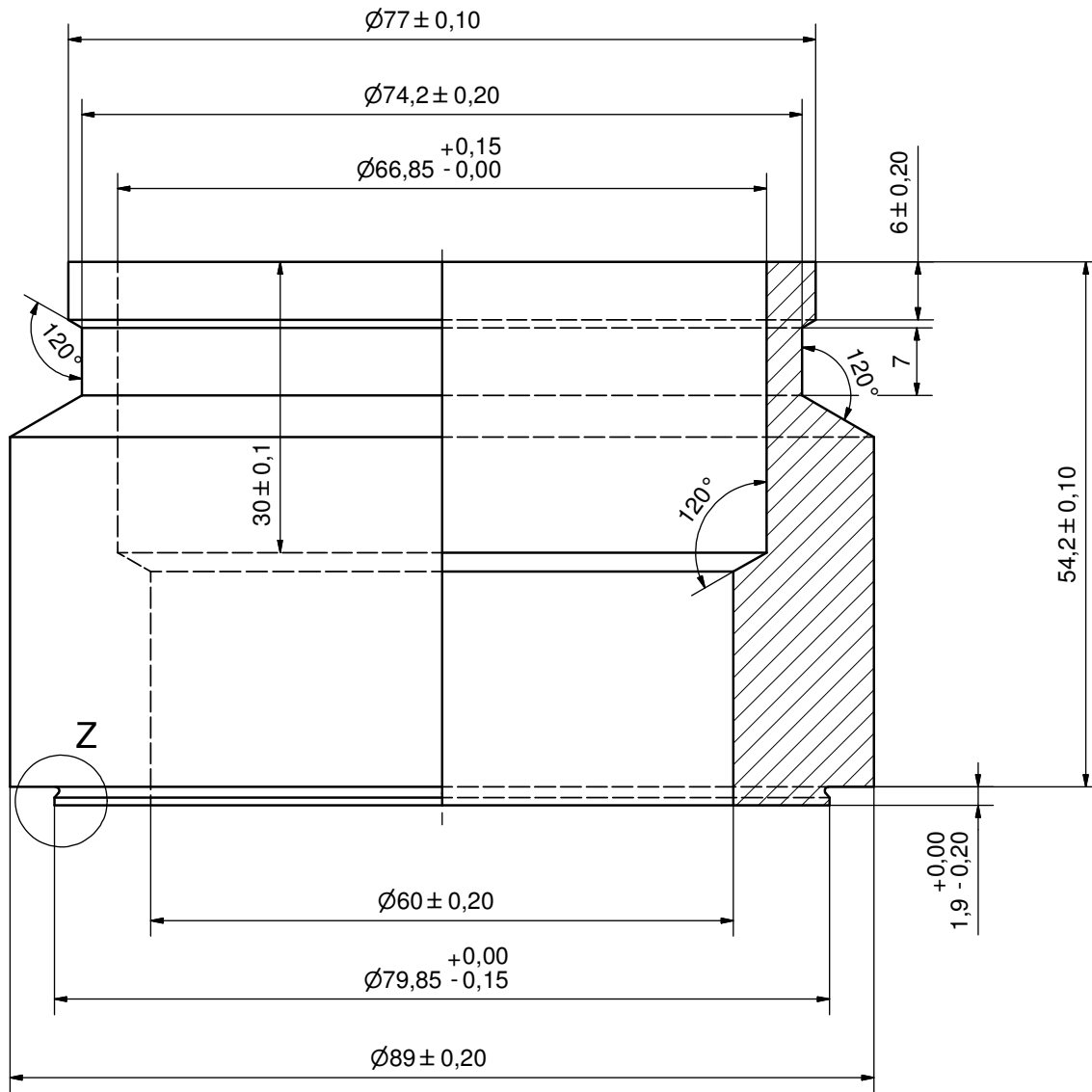


© Company Confidential, Property of SWEP International AB

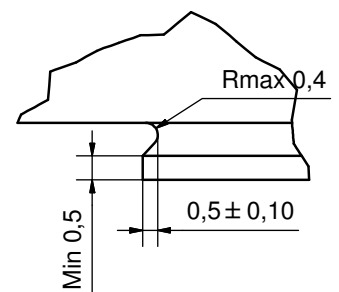
IT	QTY	DESCRIPTION	Article	Drawing No.
5	10	R- LOCKNUT M12 A2 DIN	45523	-
4	10	WASHER R-RB 13x24x2.5	45524	-
3	2	COMBINED SUPPORT LEG 200/400	31806	CC000481
2	2	COMBINED HANGER 200/400	31807	CC000479
1	10	STUD BOLT M12x25	45987	CC000543

Drawn	Checked	Approved	Created Date	General geometrical tolerancing ISO 2768:	General surface finish Ra	Scale	Paper size
JA	PNI	STA	1/15/2003			-	A3
			Title B/V400/400T COMPLETE OPTION SET				
			Article / Tool number 28247	Design Type CG	Drawing number CG400002	Revision 03	Sheet 1 (1)

Rev No.	Alteration	Date	Checked	Approved
2	ADDED DEBURR & MATERIAL INFO	2009/07/29	AP	PDM



Z (6 : 1)



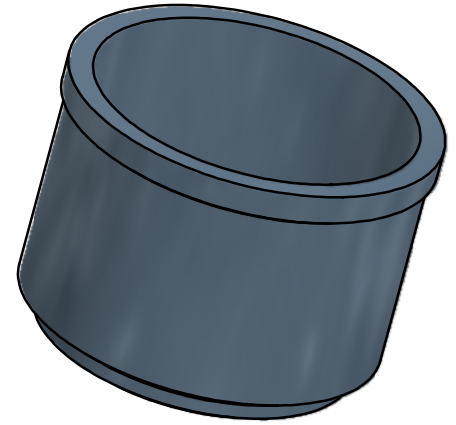
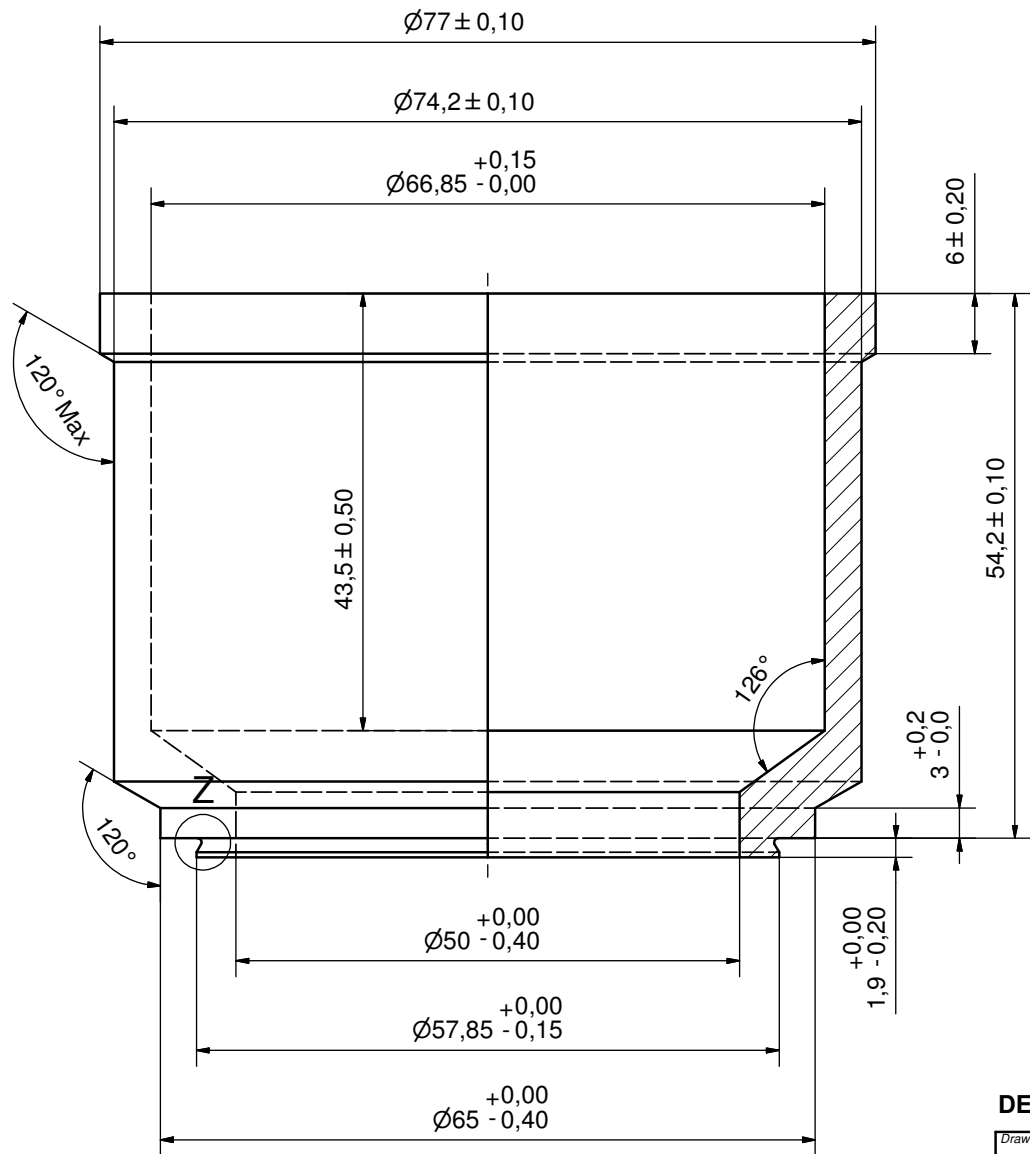
DEBURR SHARP EDGES; MAX 0,4

ACCORDING TO MQS

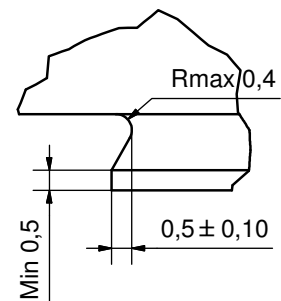
MATERIAL

Drawn	Checked	Approved	Created Date	General geometrical tolerancing ISO 2768	General surface finish Ra	Scale
EMS	STA	PNI	2002-05-23	m	3.2	2:1
			SOLDER ø66,85			
Article number		Drawing number		Revision	Sheet	
-		CD000571		2	1 (1)	

Rev No.	Alteration	Date	Checked	Approved
5	ADDED DEBURR & MATERIAL INFO	2009/07/27	AP	PDM



Z (8:1)

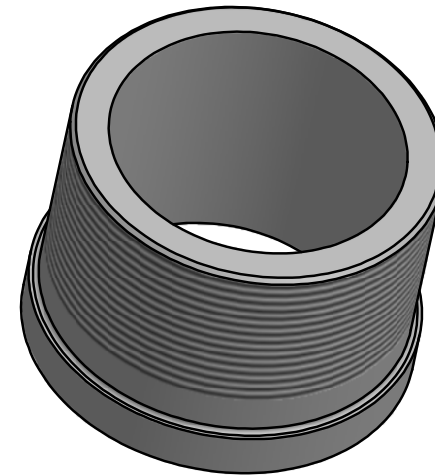
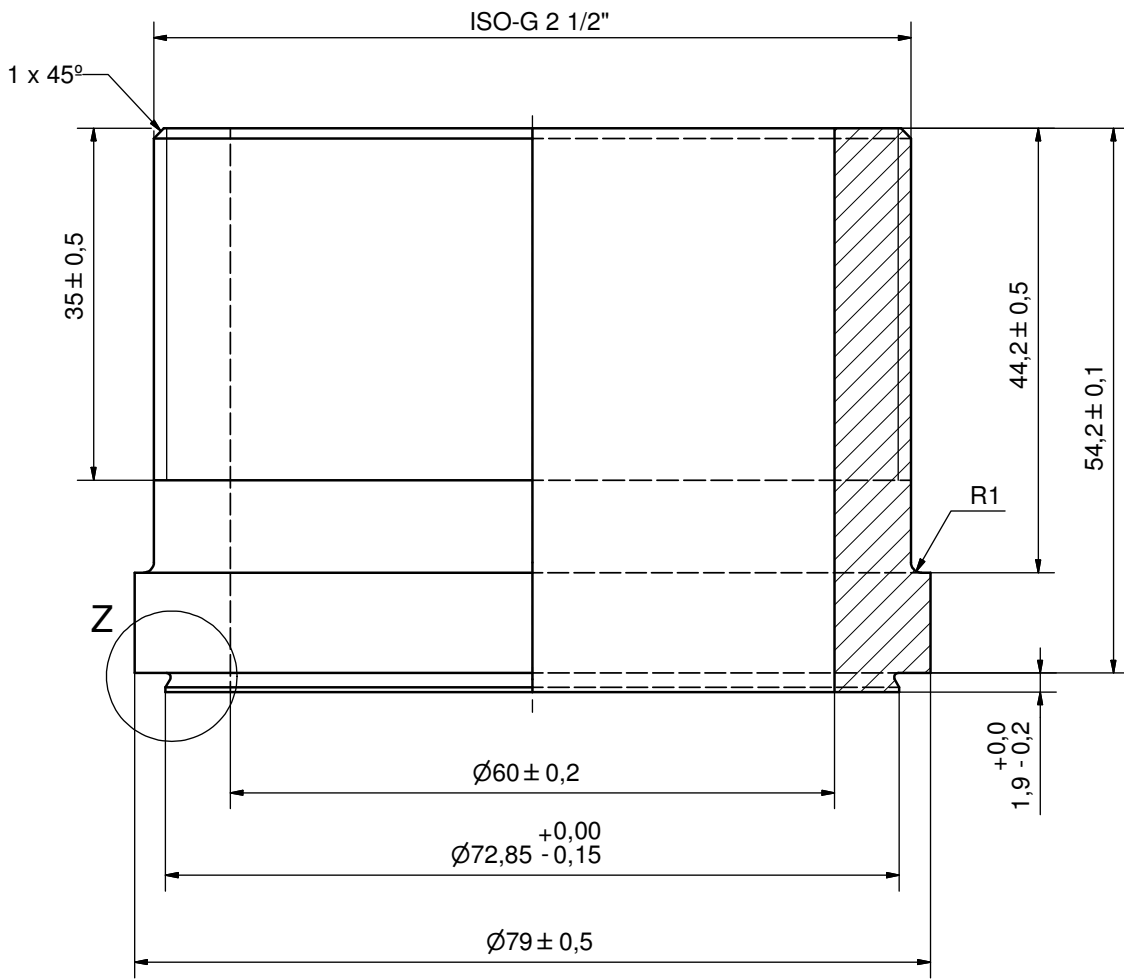


DEBURR SHARP EDGES; MAX 0,4

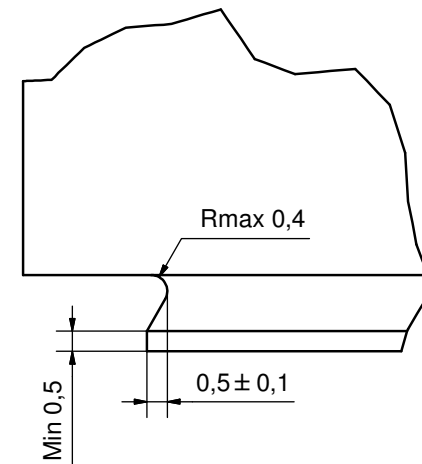
ACCORDING TO MQS
MATERIAL

Drawn	Checked	Approved	Created Date	General geometrical tolerancing ISO 2768	General surface finish R_a	Scale
JA	EMS	TOD	1998-03-24	m	3.2	2:1
			Title			
			SOLDER $\varnothing 66,85$			
Article number		Drawing number		Revision	Sheet	
-		CD000370		5	1 (1)	

Rev No.	Alteration	Date	Checked	Approved
4	ADDED DEBURR AND MATERIAL INFO	2009/08/06	RJ	PDM




Z (8 : 1)



DEBURR SHARP EDGES; MAX 0.4

ACCORDIN TO MQS

MATERIAL

Drawn	Checked	Approved	Created Date	General geometrical tolerancing ISO 2768	General surface finish R _a	Scale
EG	TOD	BOS	1997-02-17	m	3.2	-
			ISO-G 2 1/2			
Article number		Drawing number		Revision	Sheet	
-		CD000288		4	1 (1)	