

# DVD400

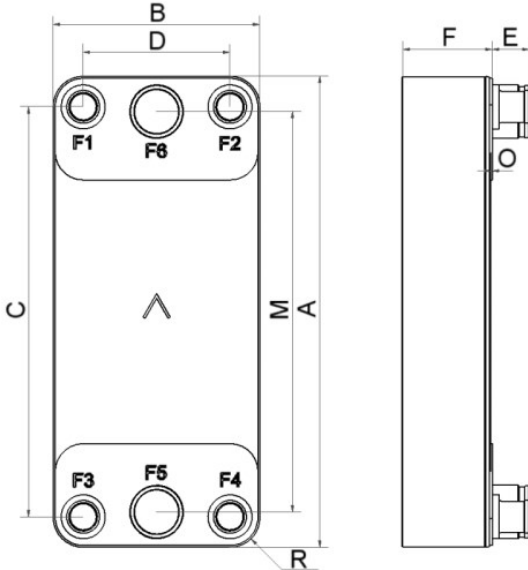
Le DV400 est un évaporateur True Dual polyvalent extrêmement efficace. Il est le choix parfait pour les applications de chillers flexibles et de climatisation. Il a l'extrême avantage de fournir une performance maximale à pleine charge comme à demi-charge.



## Spécifications de base

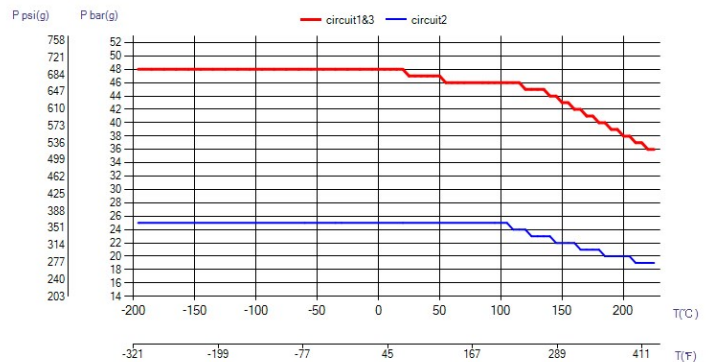
Nombre de plaques max. (NoP)	282
Débit volumétrique max.	76 m³/h (334.62 gpm)
Volume du canal	0.406/0.421 dm³ (0.0143/0.0149 ft³)
Matières	Plaques en acier inoxydable 316/316L, brasage cuivre
Poids sans les connexions	11.60+(0.65*NoP) kg 25.57+(1.433*NoP) lb
Taille la taille des Particules (mm)	1

## Les dimensions standard



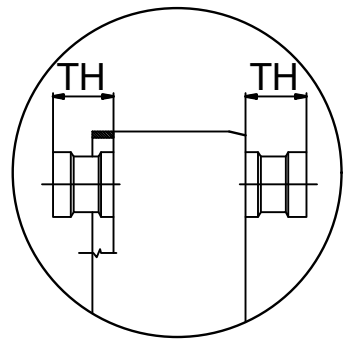
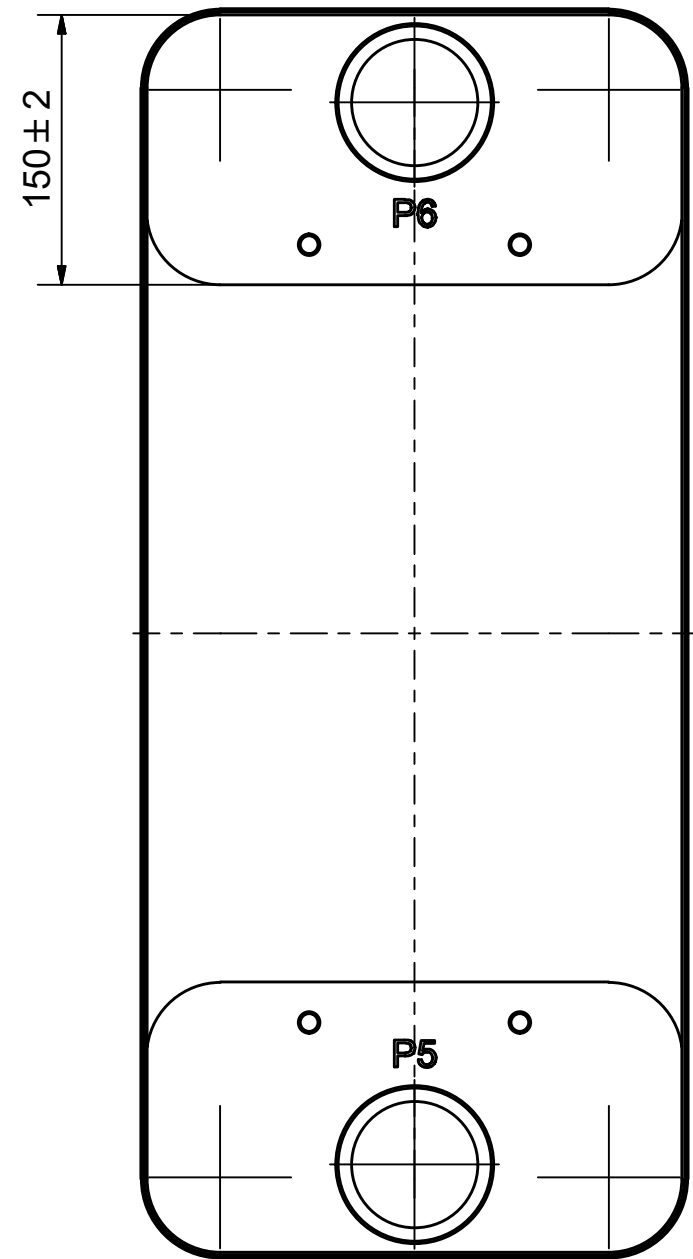
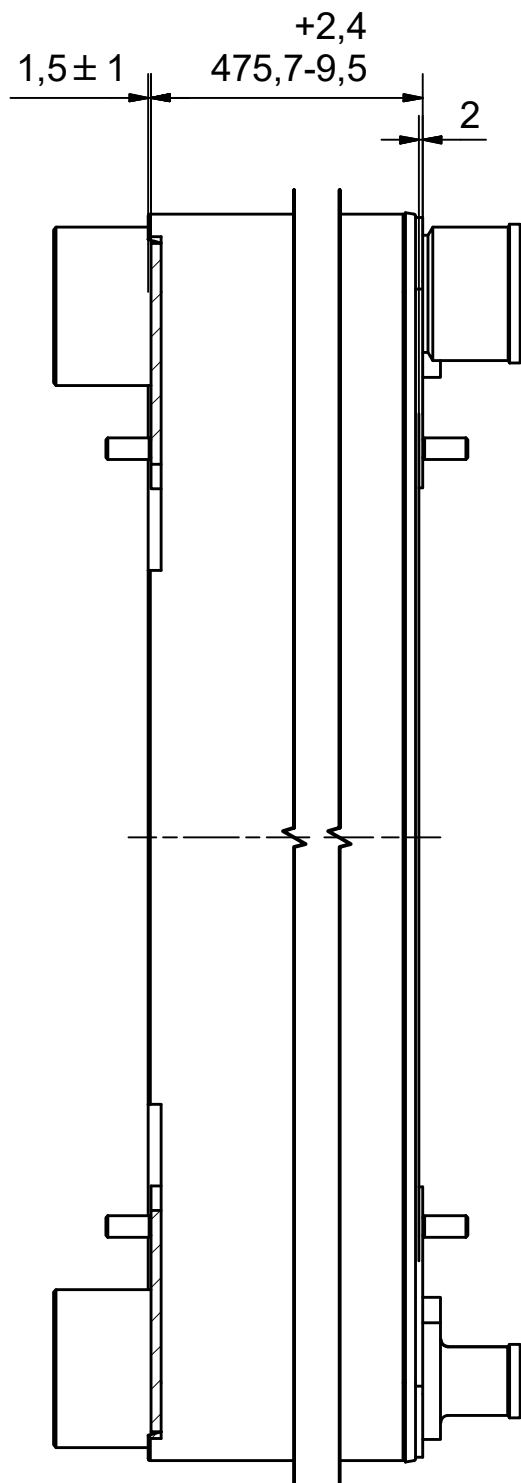
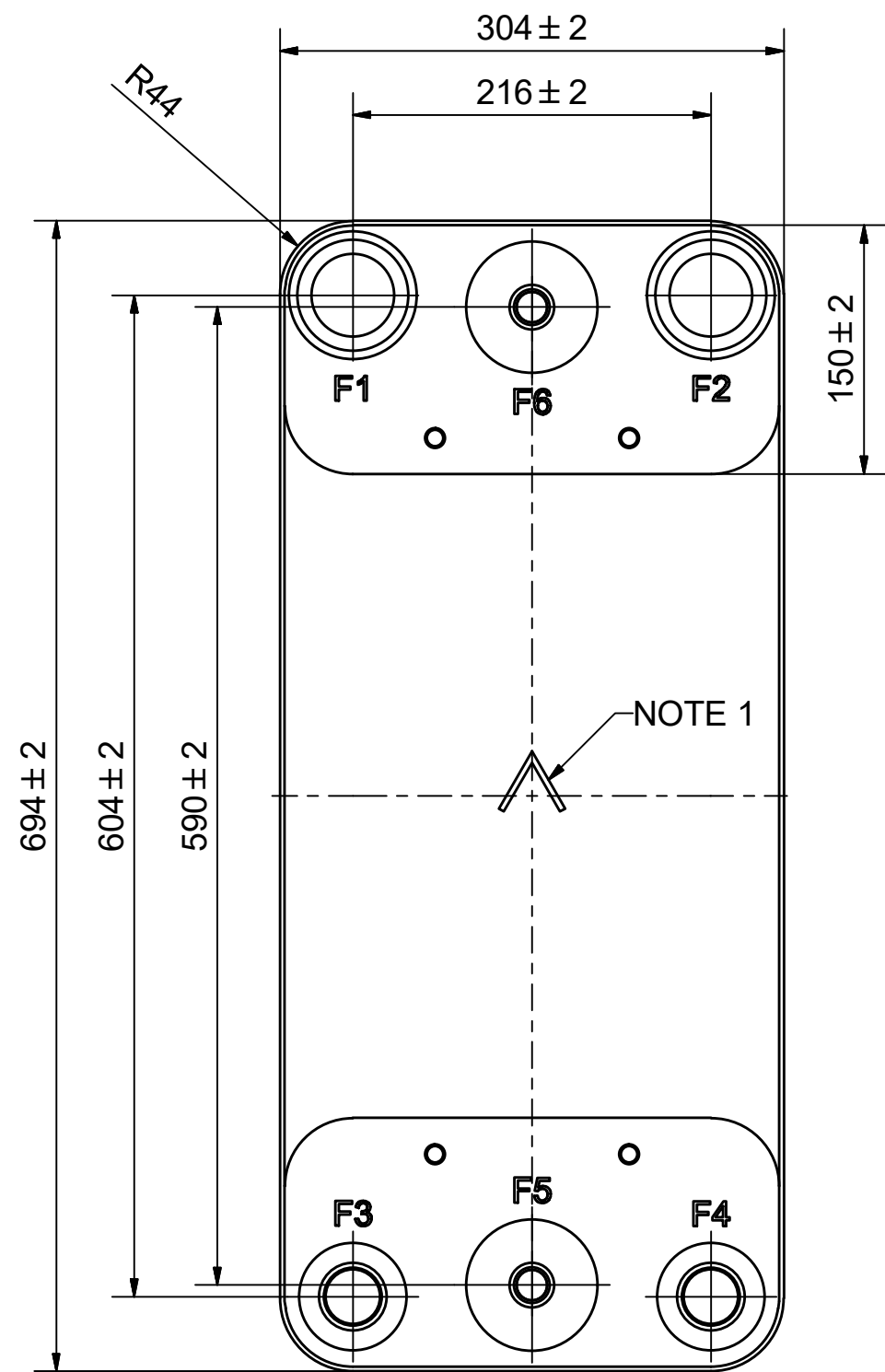
#	MM	IN
A	694	27.32
B	304	11.97
C	604	23.78
D	216	8.5
F	12,00+2,39*(NoP)	0.47+0.09*(NoP)
G	1.50	0.06
M	590	23.23
R	44	1.73
E_1	54	2.13

## PED pression / température



ÉCHANGEURS THERMIQUES

© Company Confidential, Property of SWEP International AB




**NOTE 1: ALTERNATE MARKING - STICKER OR STAMP**

F6	46094	ISO-G 1/2 INT, TH = 54,2	CD000292
F5	46094	ISO-G 1/2 INT, TH = 54,2	CD000292
F4	46465	SOLDER ø35,1, TH = 54,2	CD000371
F3	46465	SOLDER ø35,1, TH = 54,2	CD000371
F2	46464	SOLDER ø66,85, TH = 54,2	CD000370
F1	46464	SOLDER ø66,85, TH = 54,2	CD000370
F	21335	D58/D400 S.B. LOC F 4xC432x117	CG580007
Pos	Article No	Title / Denomination, code, material, dimension etc	Drawing No./ref



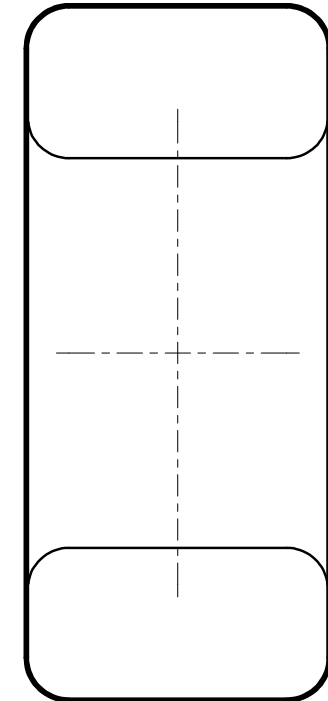
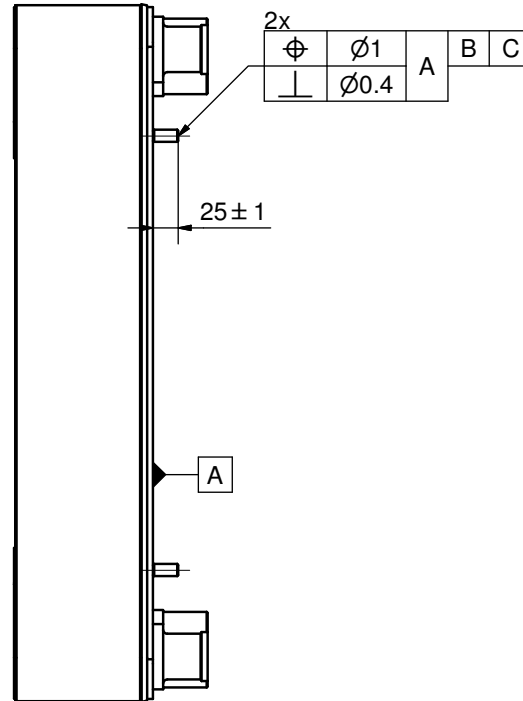
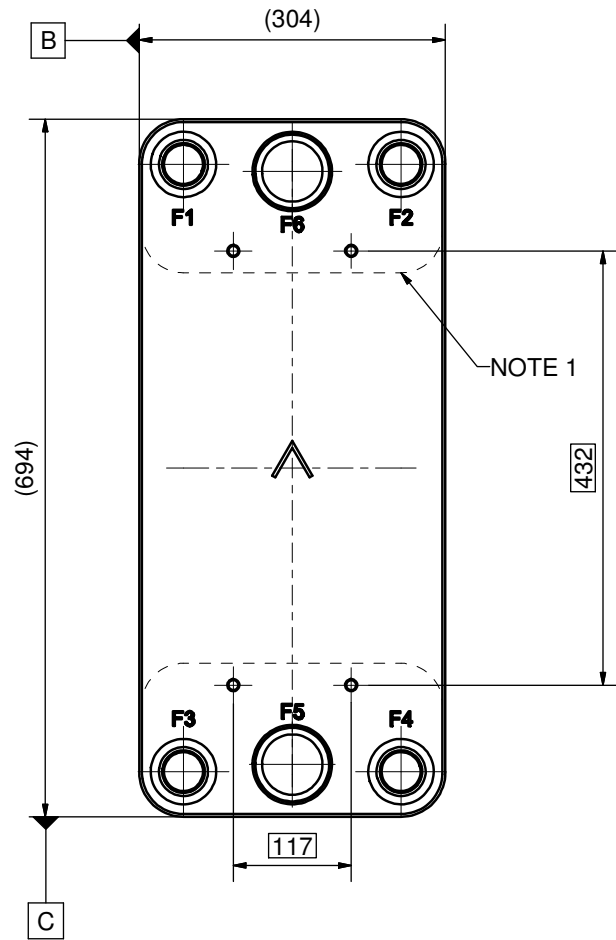
P6	30734	ISO-G 3 A, TH = 54,2	CD000483
P5	30734	ISO-G 3 A, TH = 54,2	CD000483
P	21319	D58/D400 S.B. LOC P 4xC432x117	CG580013
Pos	Article No	Title / Denomination, code, material, dimension etc	Drawing No./ref

Title <b>DVD400Hx194/1P-SC-M 35.1+2x66.85+35.1+2x1/2"INT / 2x3"</b>			
 A DOVER COMPANY		Created Date 2024-05-02	Created By AU
		Article/Configuration number 03442554.0	Drawing number AU00044357_03442554.0



ÉCHANGEURS THERMIQUES

Rev No	Alteration	Date	Checked	Approved
04	Positional Tolerance modified	2011-12-05	INRJ	PDM



NOTE 1. SPLIT COVER PLATE ON D400 ONLY

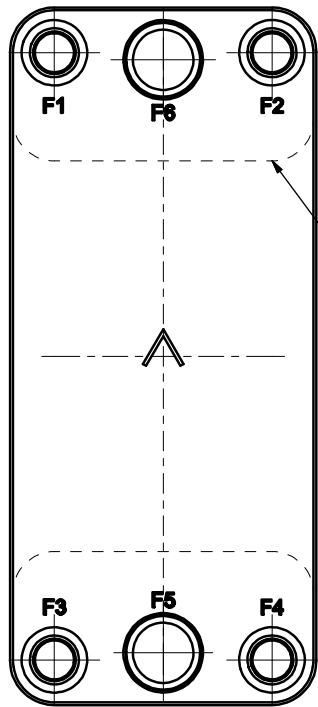
© Company Confidential, Property of SWEP International AB

1	4	STUD BOLT M12x25 ART.NO. 45987				M12x25
IT	QTY	TITLE				Drawing No.
Drawn	Checked	Approved	Created Date	General geometrical tolerancing ISO 2768	General surface finish Ra	Scale
ANO	PDM	PDM	2005-03-02			A3
		Title				
		D58/D400 S.B. LOC F 4xC432x117				
Article / Tool number		Design Type	Drawing number	Revision	Sheet	
21335		CG	CG580007	04	1 (1)	



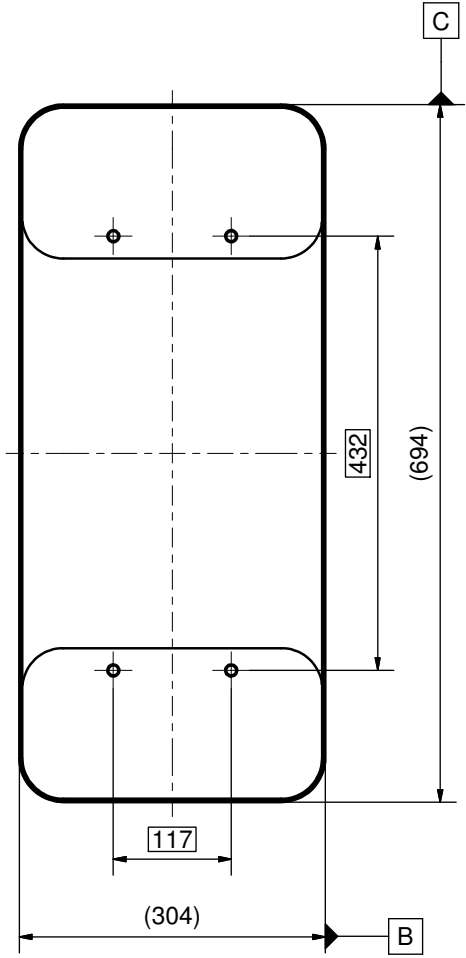
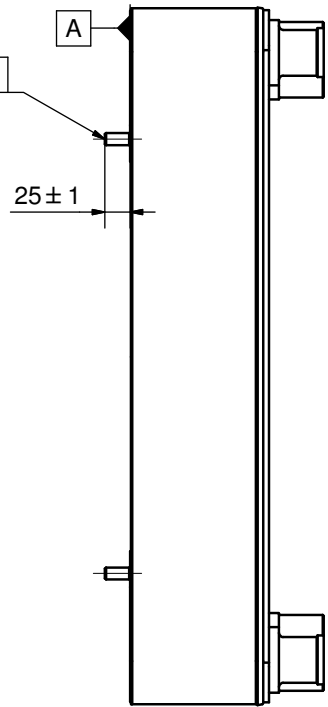
ÉCHANGEURS THERMIQUES

Rev No	Alteration	Date	Checked	Approved
02	Positional Tolerance modified	2011-12-05	INRJ	PDM



2x	$\Phi$	$\Phi 1$	A	B	C
	$\perp$	$\Phi 0.4$			

NOTE 1



NOTE 1. SPLIT COVER PLATE ON D400 ONLY

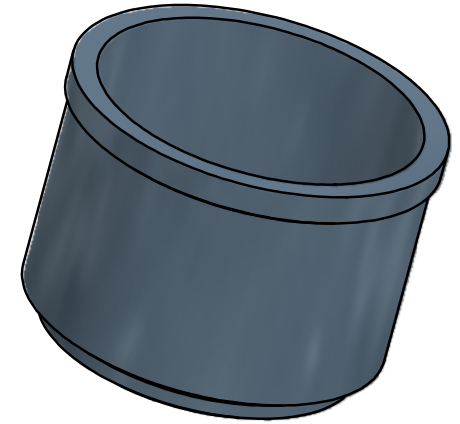
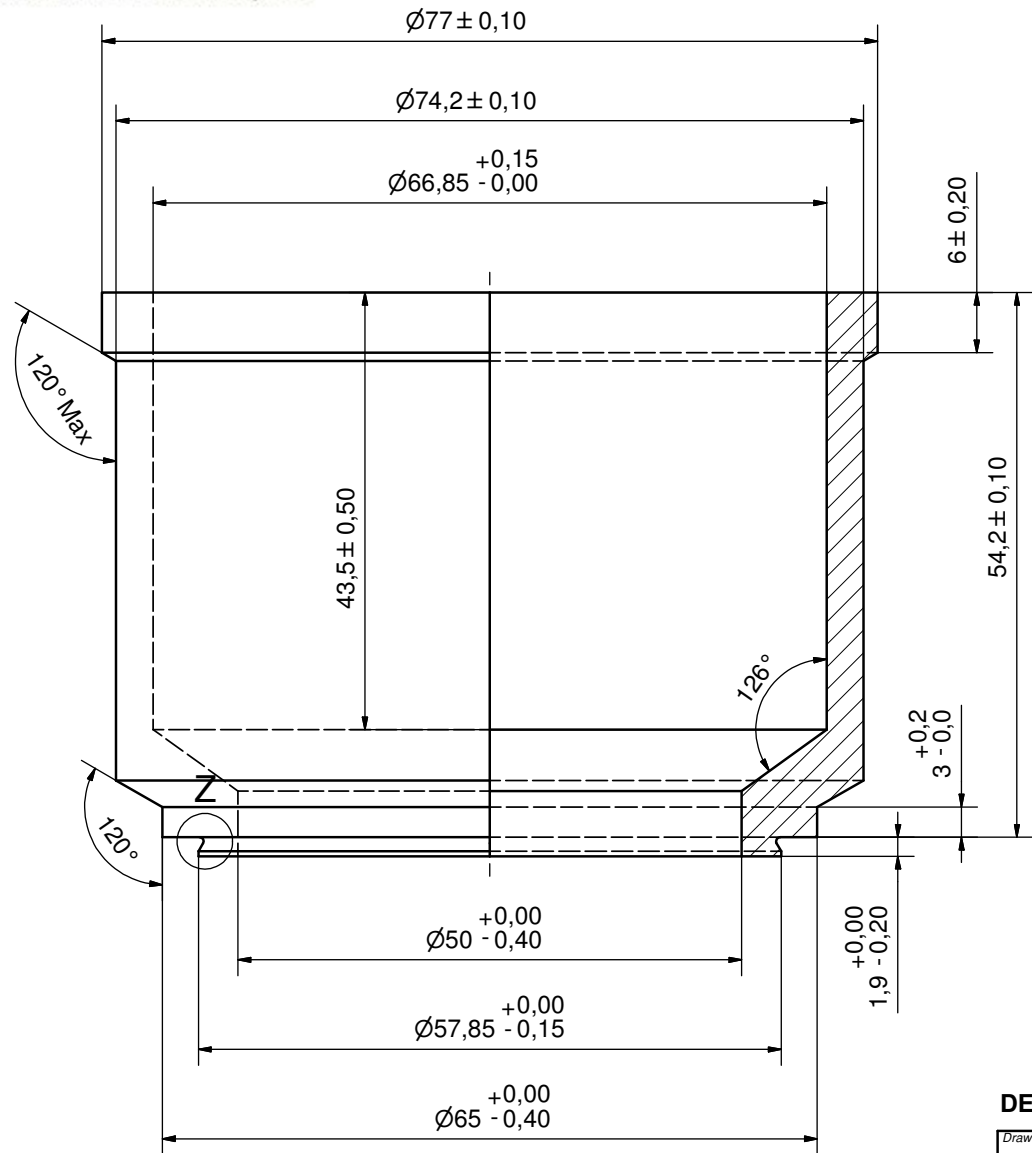
© Company Confidential, Property of SWEP International AB

1	4	STUD BOLT M12x25 ART.NO. 45987				M12x25
IT	QTY	TITLE				Drawing No.
Drawn	Checked	Approved	Created Date	General geometrical tolerancing ISO 2768	General surface finish Ra	Scale
ANO	PDM	PDM	2005-03-02			A3
		Title				
		D58/D400 S.B. LOC P 4xC432x117				
Article / Tool number		Design Type	Drawing number	Revision	Sheet	
21319		CG	CG580013	02	1 (1)	

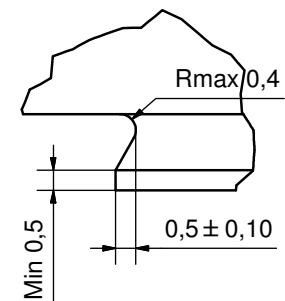


ÉCHANGEURS THERMIQUES

Rev No.	Alteration	Date	Checked	Approved
5	ADDED DEBURR & MATERIAL INFO	2009/07/27	AP	PDM



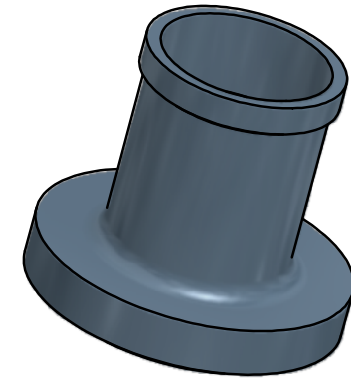
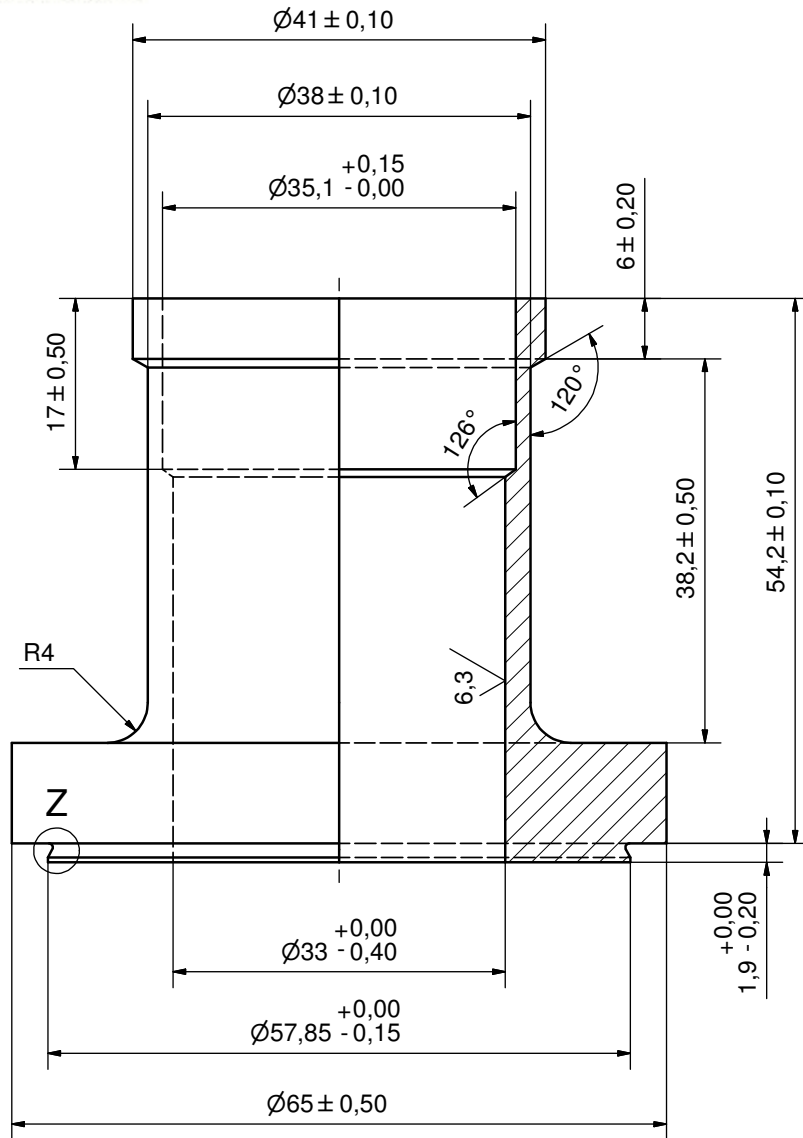
Z (8:1)



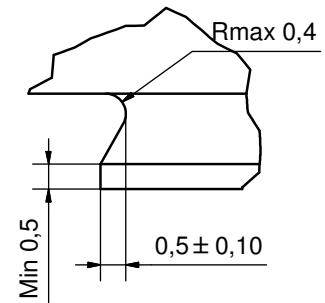
DEBURR SHARP EDGES; MAX 0,4

ACCORDING TO MQS  
MATERIAL

Drawn	Checked	Approved	Created Date	General geometrical tolerancing ISO 2768	General surface finish $R_a$	Scale
JA	EMS	TOD	1998-03-24	m	3.2	2:1
			Title			
			SOLDER $\varnothing 66,85$			
Article number		Drawing number		Revision	Sheet	
-		CD000370		5	1 (1)	



Z ( 10 : 1 )



Rev No.	Alteration	Date	Checked	Approved
3	ADDED DEBURR & MATERIAL INFO	2009/07/27	AP	PDM

**DEBURR SHARP EDGES; MAX 0,4**

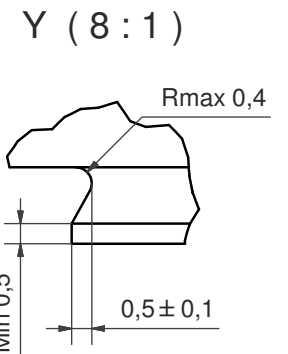
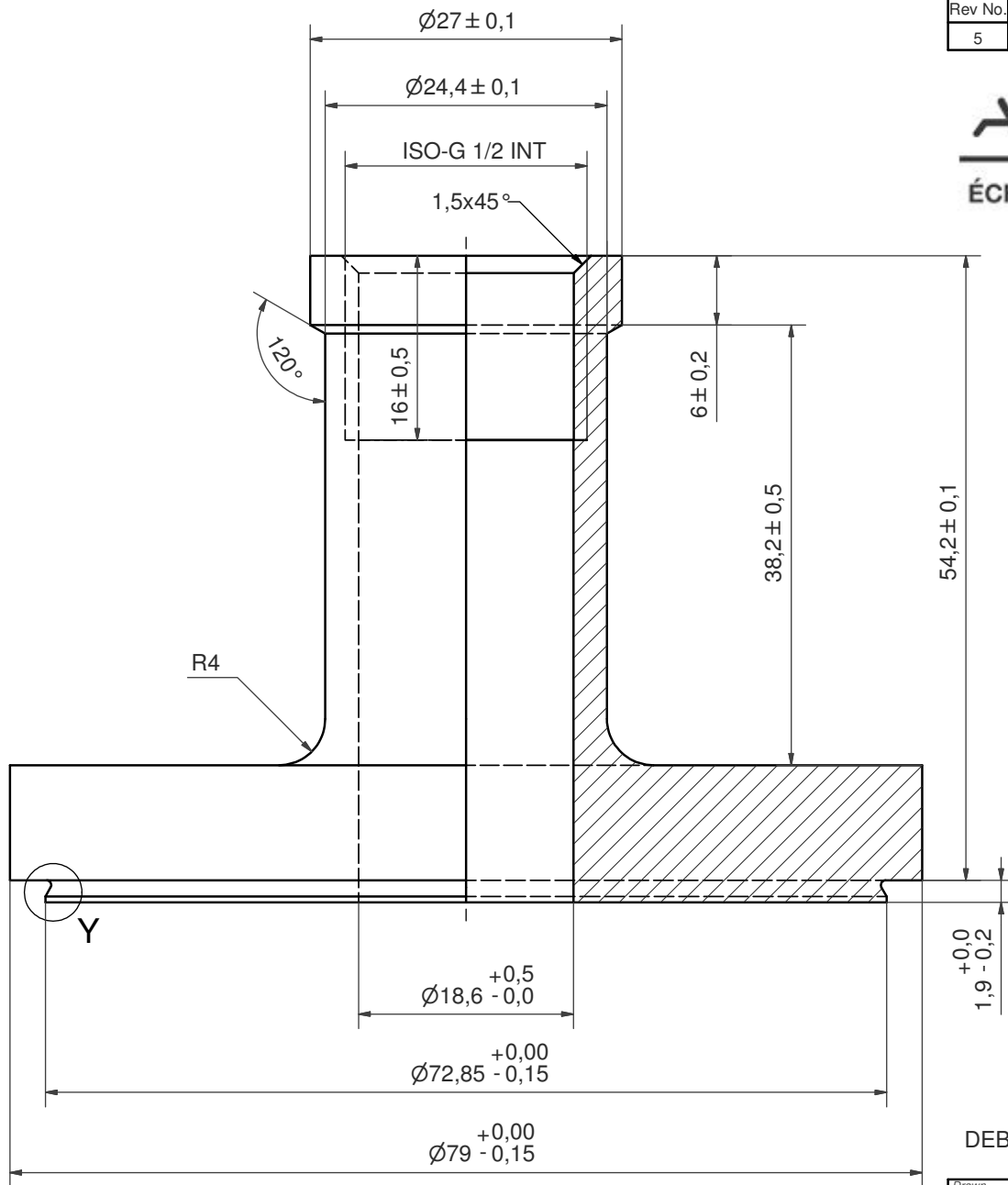
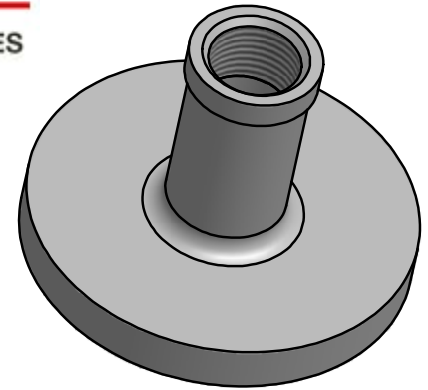
ACCORDING TO MQS

MATERIAL

Drawn	Checked	Approved	Created Date	General geometrical tolerancing ISO 2768	General surface finish $R_a$	Scale
JA	EMS	TOD	1998-03-24	m	3.2	2:1
			Title			
			SOLDER $\varnothing 35,1$			
Article number		Drawing number		Revision	Sheet	
-		CD000371		3	1 ( 1 )	

Rev No.	Alteration	Date	Checked	Approved
5	ADDED DEBURR AND MATERIAL INFO	2009/08/06	RJ	PDM

**AXINTRA**  
ÉCHANGEURS THERMIQUES



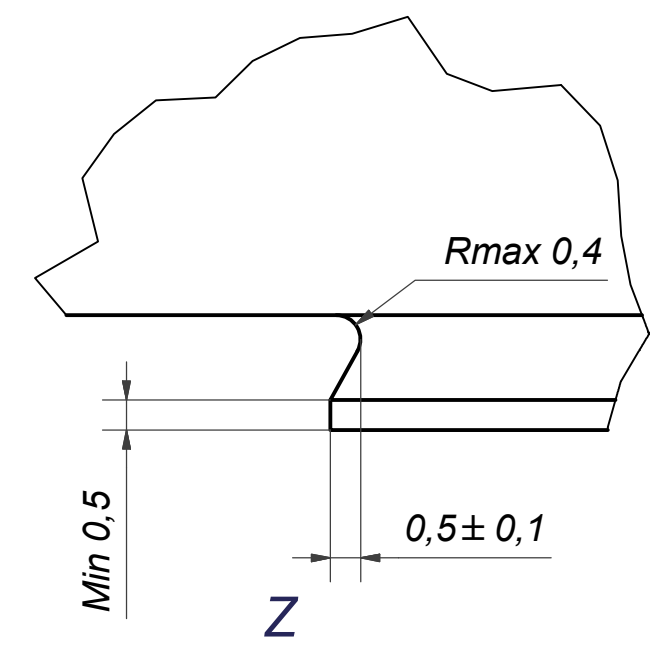
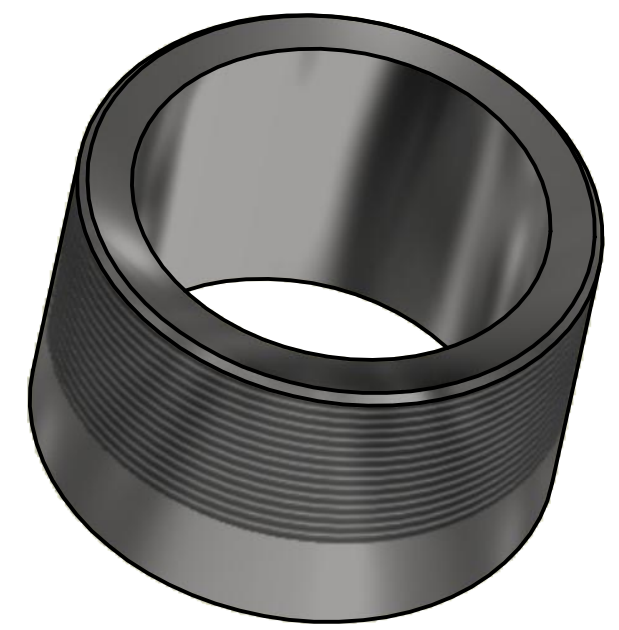
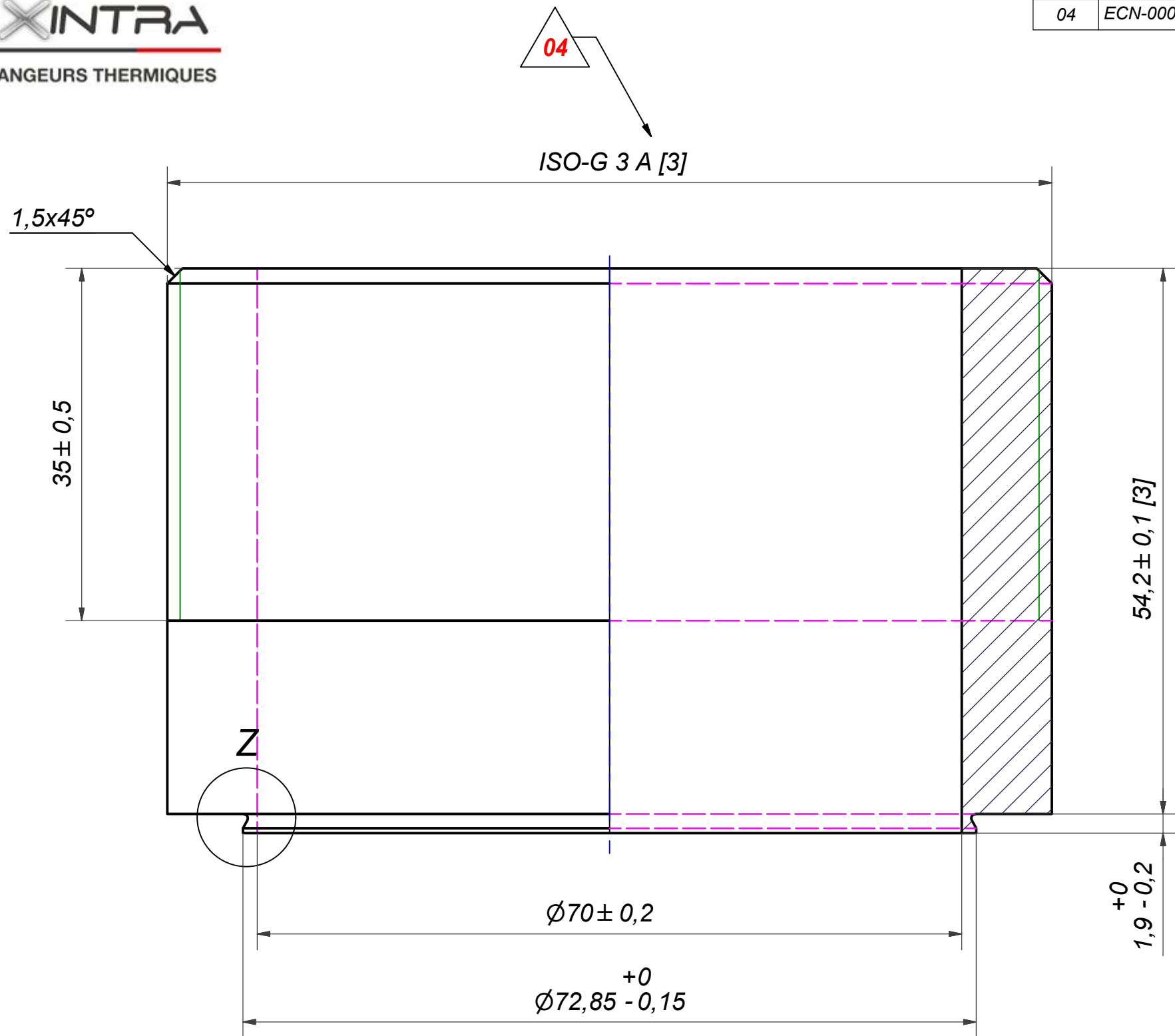
DEBURR SHARP EDGES; MAX 0.4

ACCORDING TO MQS  
MATERIAL

Drawn	Checked	Approved	Created Date	General geometrical tolerancing ISO 2768	General surface finish Ra	Scale
EG	TOD	BOD	1997-02-18	m	3.2	-
			Title <b>ISO-G 1/2 INT</b>			
Article number		Drawing number		Revision	Sheet	
-		CD000292		5	1 (1)	

A DOVER COMPANY

Rev No	Alteration	Date	Checked	Approved
04	ECN-000223: update of thread designation + critical char	2022-03-04	10083926	PDM



© Company Confidential, Property of SWEP International AB

**NOTE 3: MARKING TEXT "0" FOR IDENTIFICATION ONLY  
PRESENT AT 2 PLACES 180° FROM EACH OTHER  
"0" = 304 MATERIAL**

**NOTE 2: [3] - CRITICAL/SPECIAL CHARACTERISTIC TO BE FOLLOWED**

**NOTE 1: DEBURR SHARP EDGES; MAX 0.4**

ACCORDING TO MQS  
MATERIAL

Drawn	Checked	Approved	Created Date	General geometrical tolerancing ISO 2768:	General surface finish $R_a$ :	Scale	Paper size	
laja	PDM	PDM	2000-12-12	m	3.2	-	A3	
			Title					
			ISO-G 3 A					
			Article number	Design Type	Drawing number	Revision	Sheet	
				CD	CD000483	04	1 (1)	