

S500T

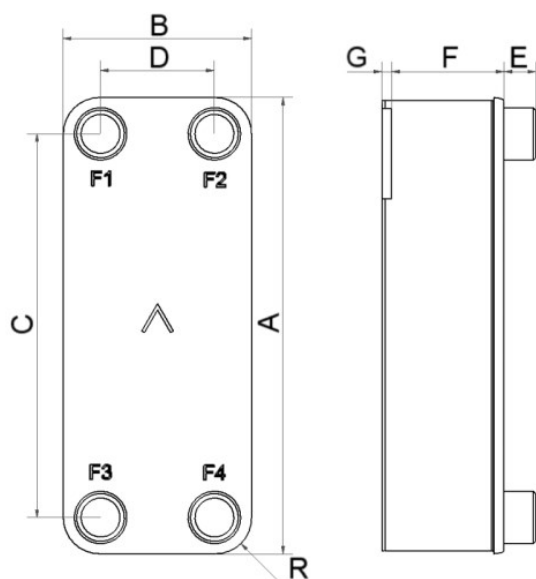
Le S500T est optimisé pour répondre aux exigences extrêmes des chillers. Le S500T est un excellent choix pour les chillers modulaires, pour la climatisation de grandes installations, telles que les centres sportifs et les centres commerciaux.



Spécifications de base

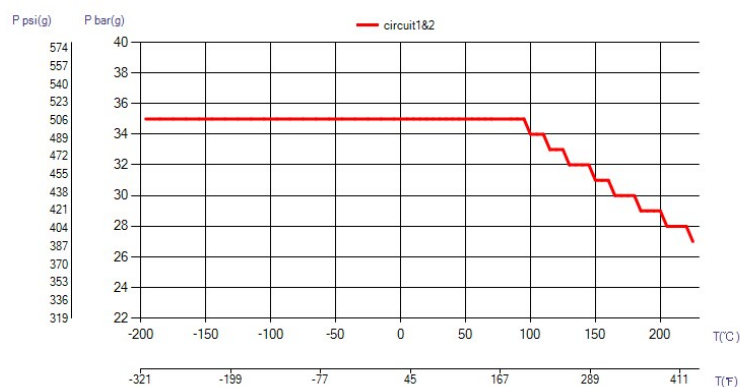
Nombre de plaques max. (NoP)	400
Débit volumétrique max.	155,5 m³/h (22.01 gpm)
Volume du canal	0.573/0.573 dm³ (0.0202/0.0202 ft³)
Matières	Plaques en acier inoxydable 316/316L, brasage cuivre
Poids sans les connexions	16.03+(1.0186*NoP) kg 35.35+(2.246*NoP) lb
Taille la taille des Particules (mm)	1

Les dimensions standard

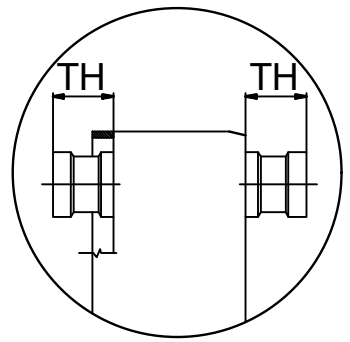
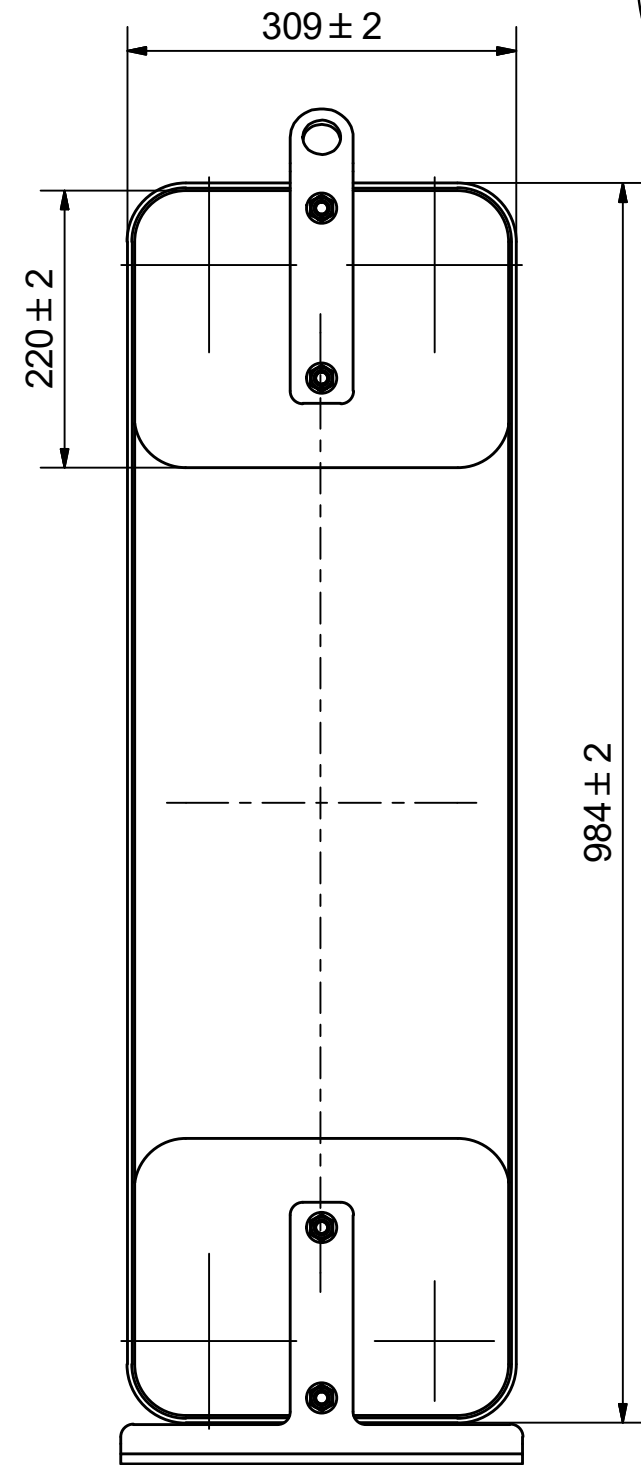
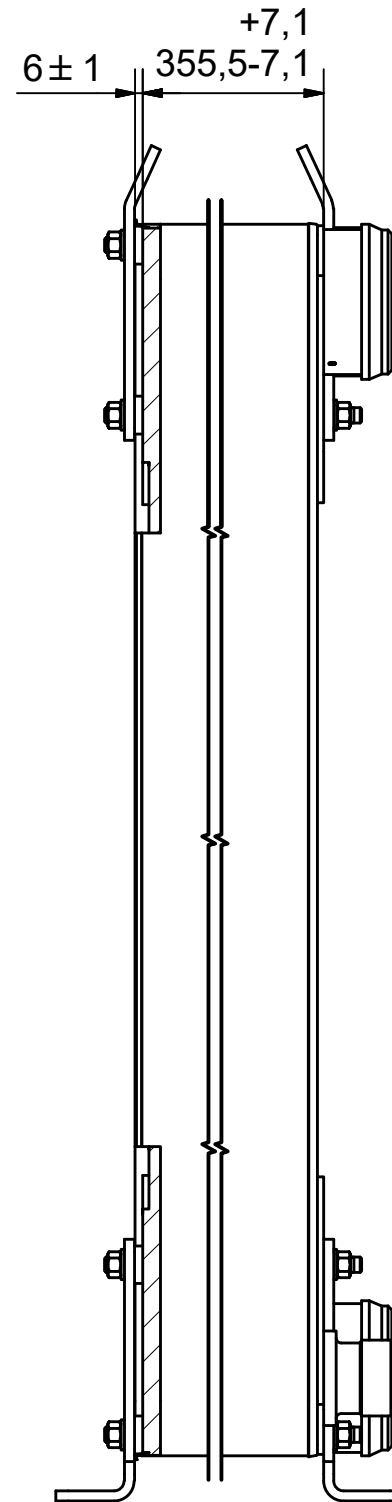
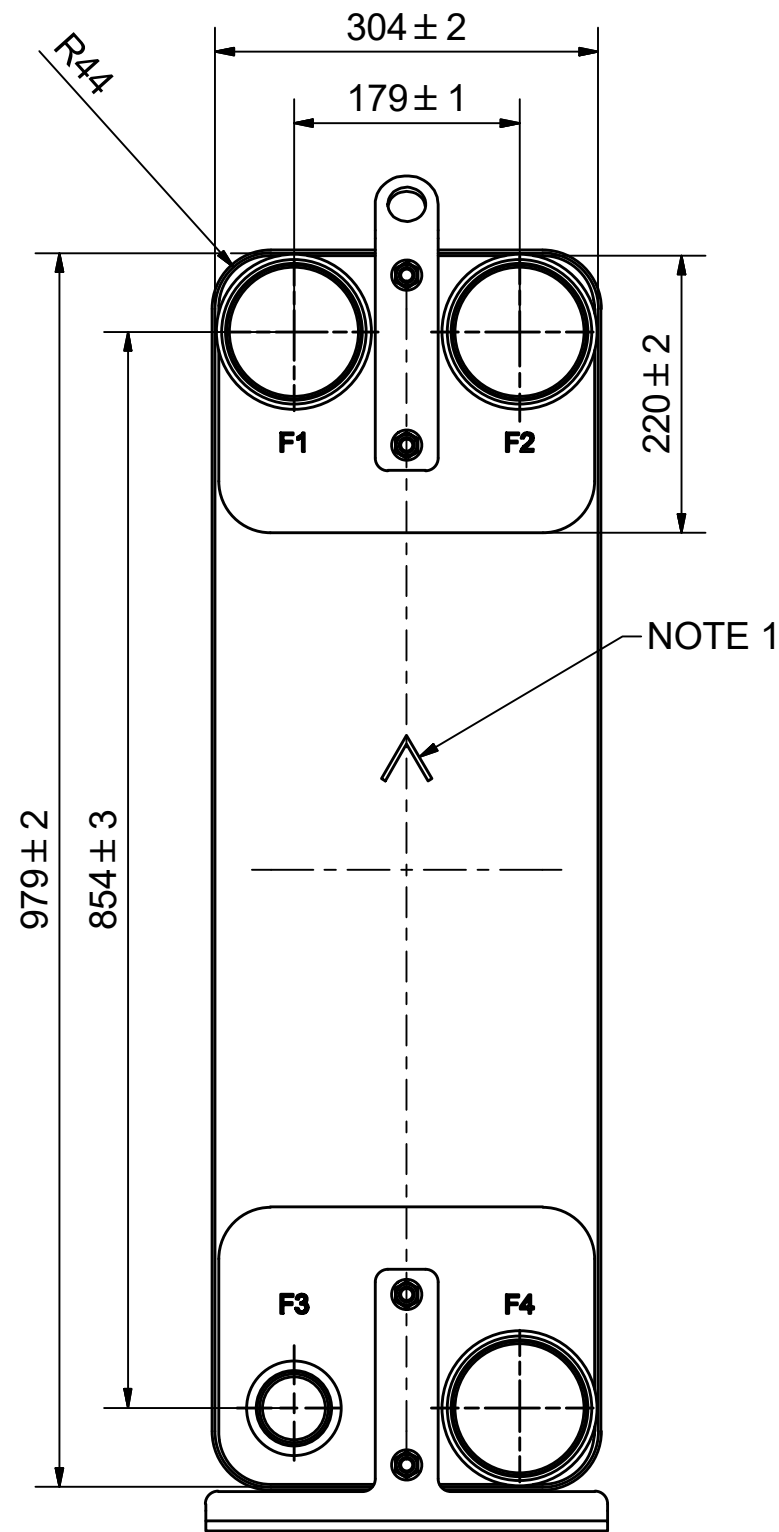


#	MM	IN
A	979	38.54
B	304	11.97
C	854	33.62
D	179	7.05
F	12,00+2,29*(NoP)	0.47+0.09*(NoP)
G	6	0.24
R	44	1.73
E_1	54	2.13
E_2	27	1.06

PED pression / température



ÉCHANGEURS THERMIQUES



NOTE 1 ALTERNATE MARKING: STICKER OR STAMP

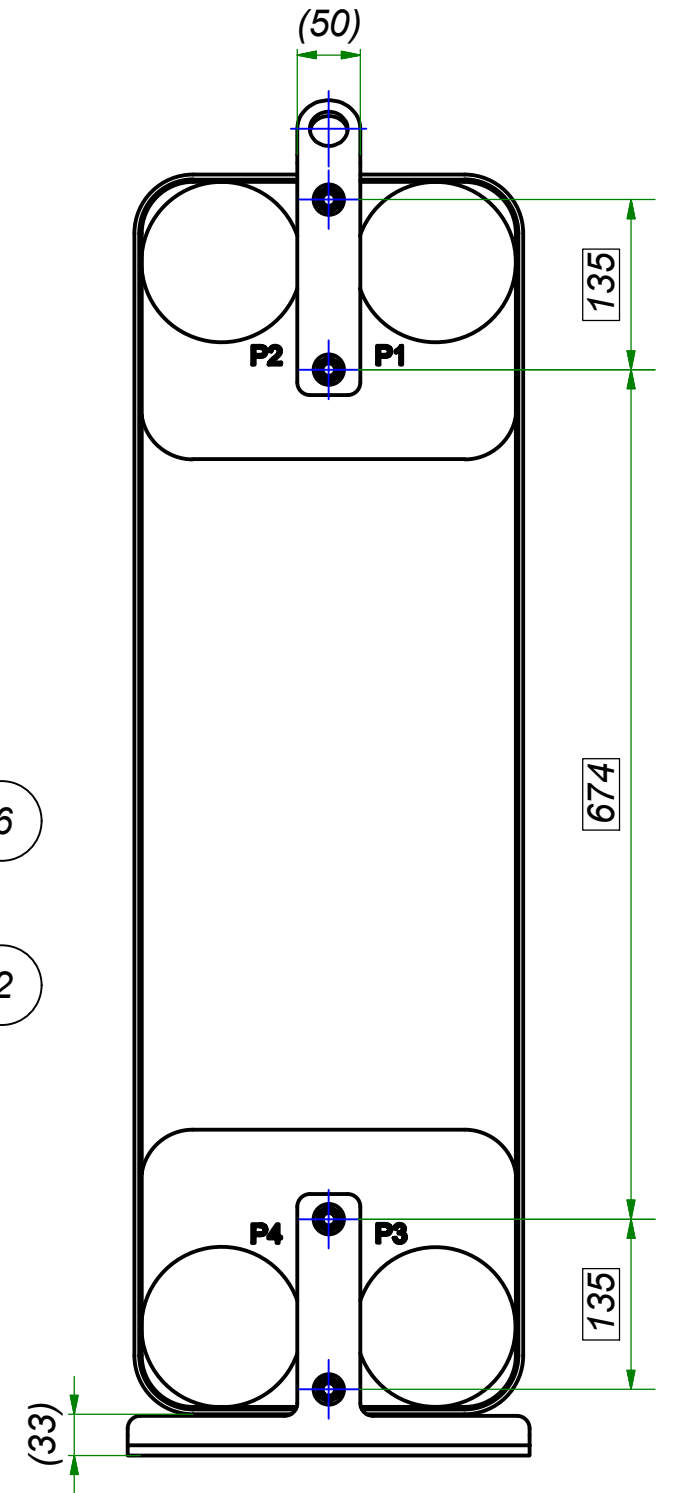
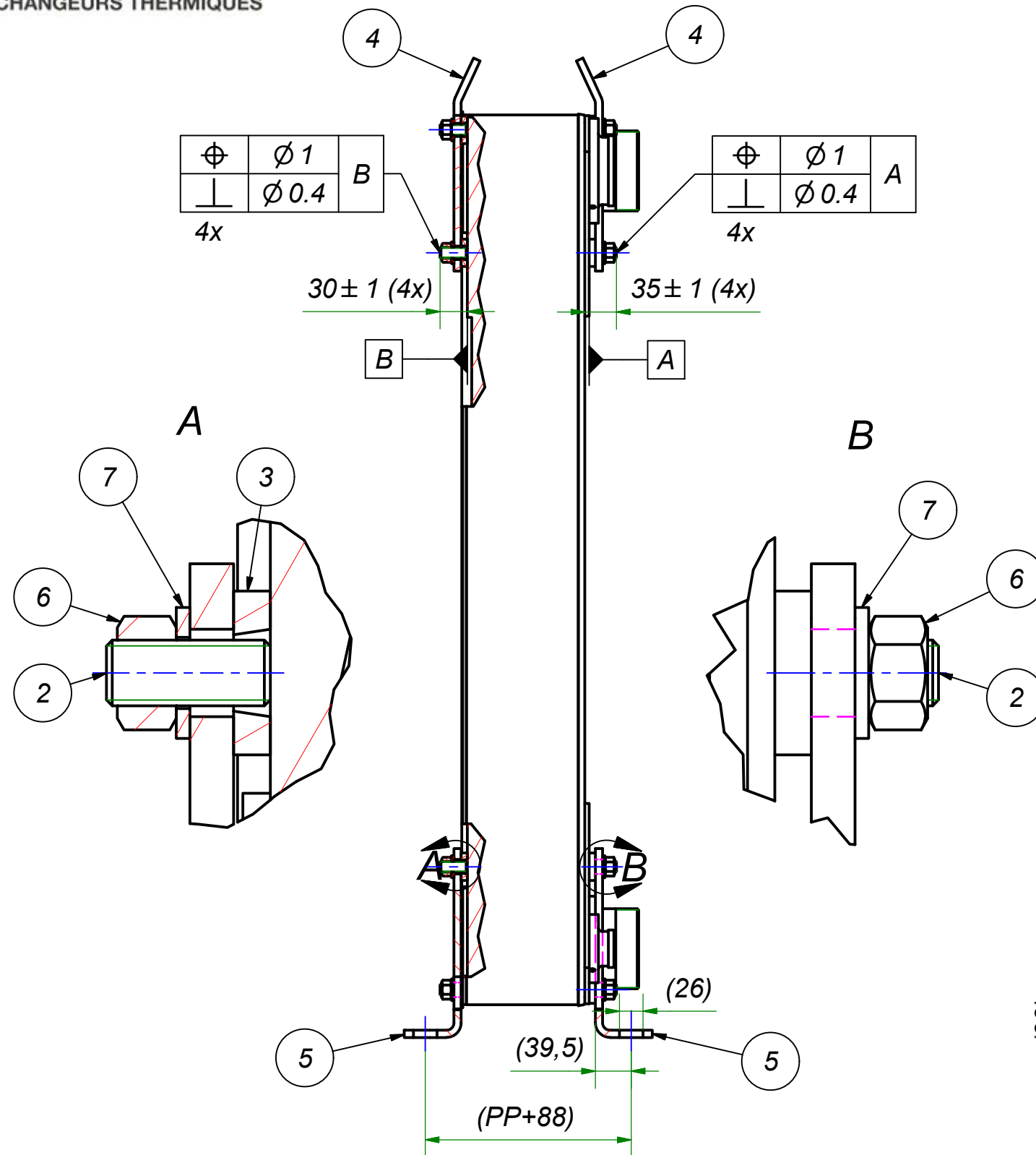
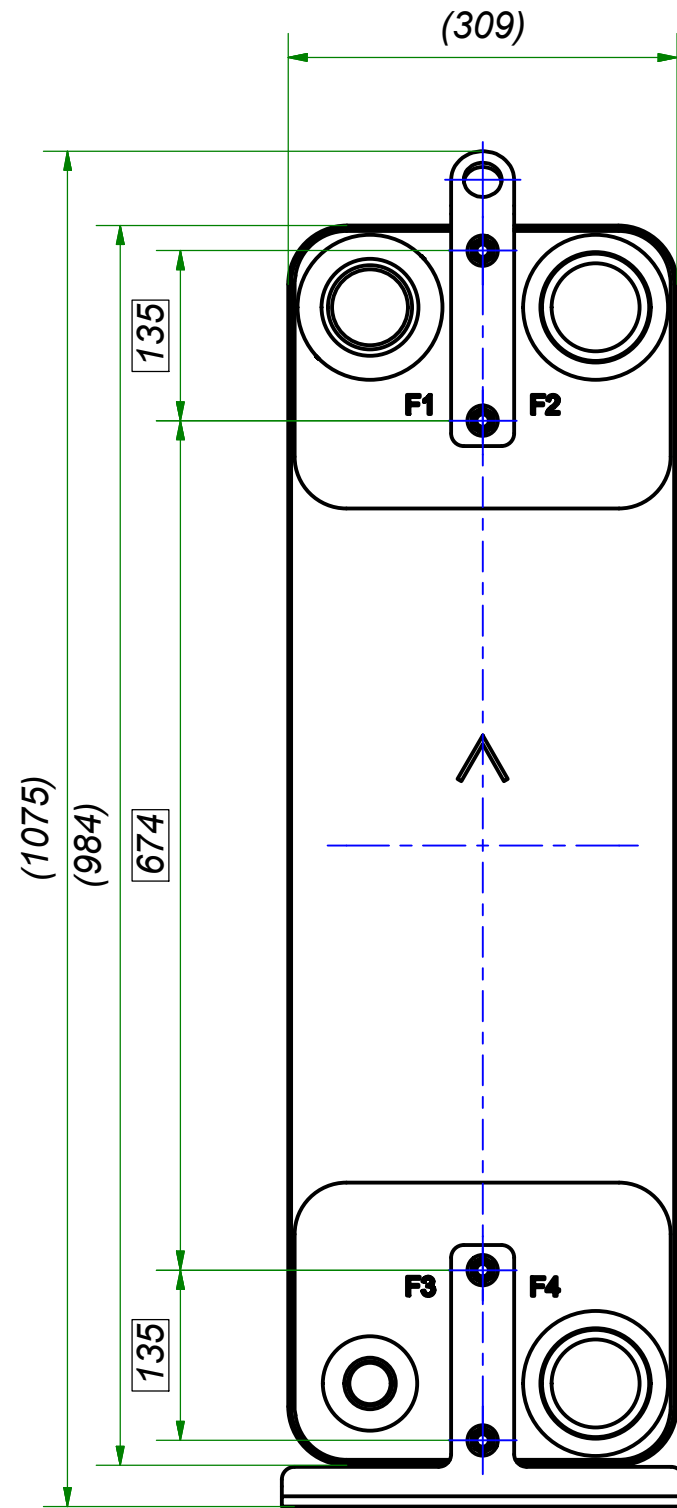
F4	32988	WELD 114, TH = 54,2	CD000883				
F3	34796	SOLDER ø54.3 & WELD ø60, TH = 54,2	CD001249				
F2	32988	WELD 114, TH = 54,2	CD000883				
F1	33037	WELD 114, TH = 54,2	CD000892				
F	28391	500T/439 COMPLETE OPTION SET/SHORT	CG500025_1				
F	24079	500T/439 STUD BOLT LOC. F 4x135x674x135	00049438_2	P	24080	500T/439 STUD BOLT LOC. P 4x135x674x135	00049439_2
Pos	Article No	Title / Denomination, code, material, dimension etc	Drawing No./ref	Pos	Article No	Title / Denomination, code, material, dimension etc	Drawing No./ref

AXINTRA
ÉCHANGEURS THERMIQUES

Title		S500TMx150/1P-SC-S 54.3&60+W114.3+2xW114.3	
Created Date		2024-03-21	Created By
Article/Configuration number		03160412.0	Drawing number
A DOVER COMPANY			AU00039172_03160412.0

Rev No	Alteration	Date	Checked	Approved
02	Note change.	2023-12-11	11043633	PDM

AXINTRA
ÉCHANGEURS THERMIQUES




© Company Confidential, Property of SWEP International AB

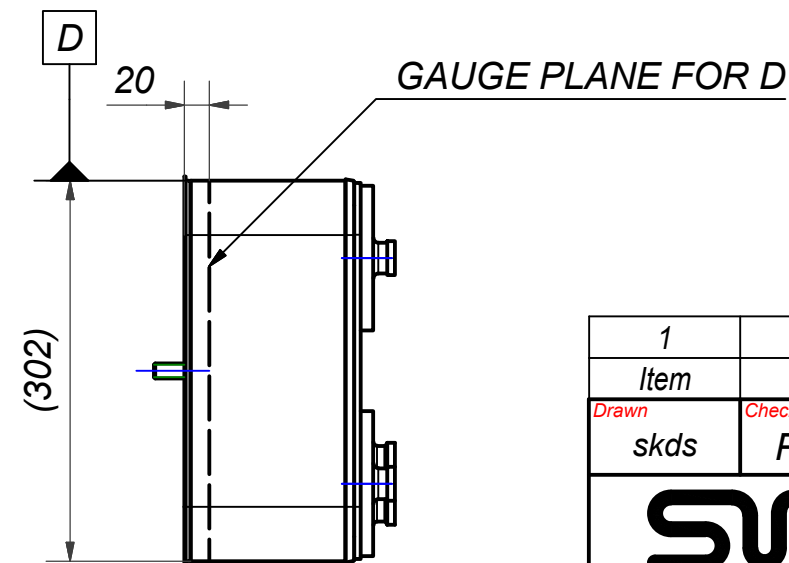
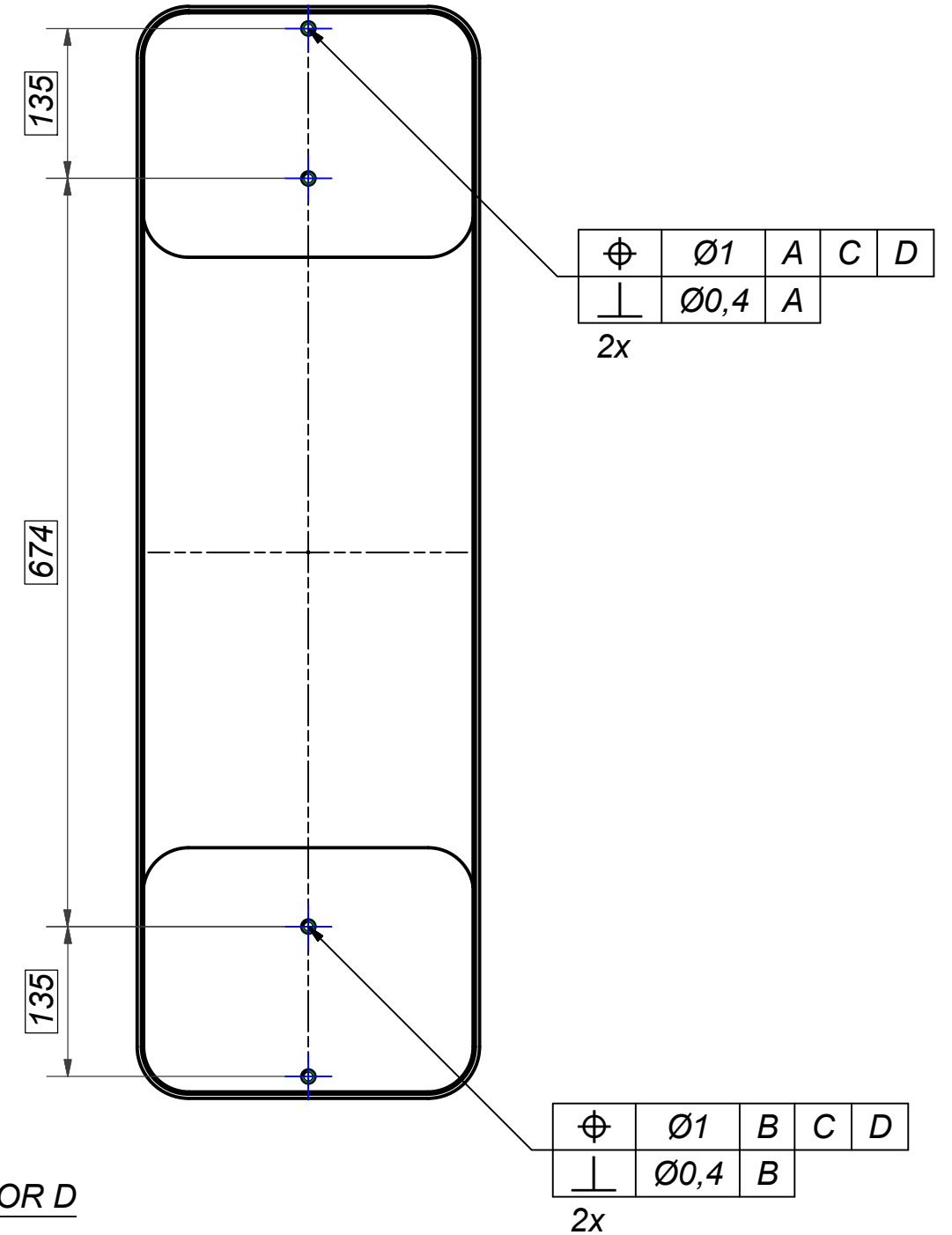
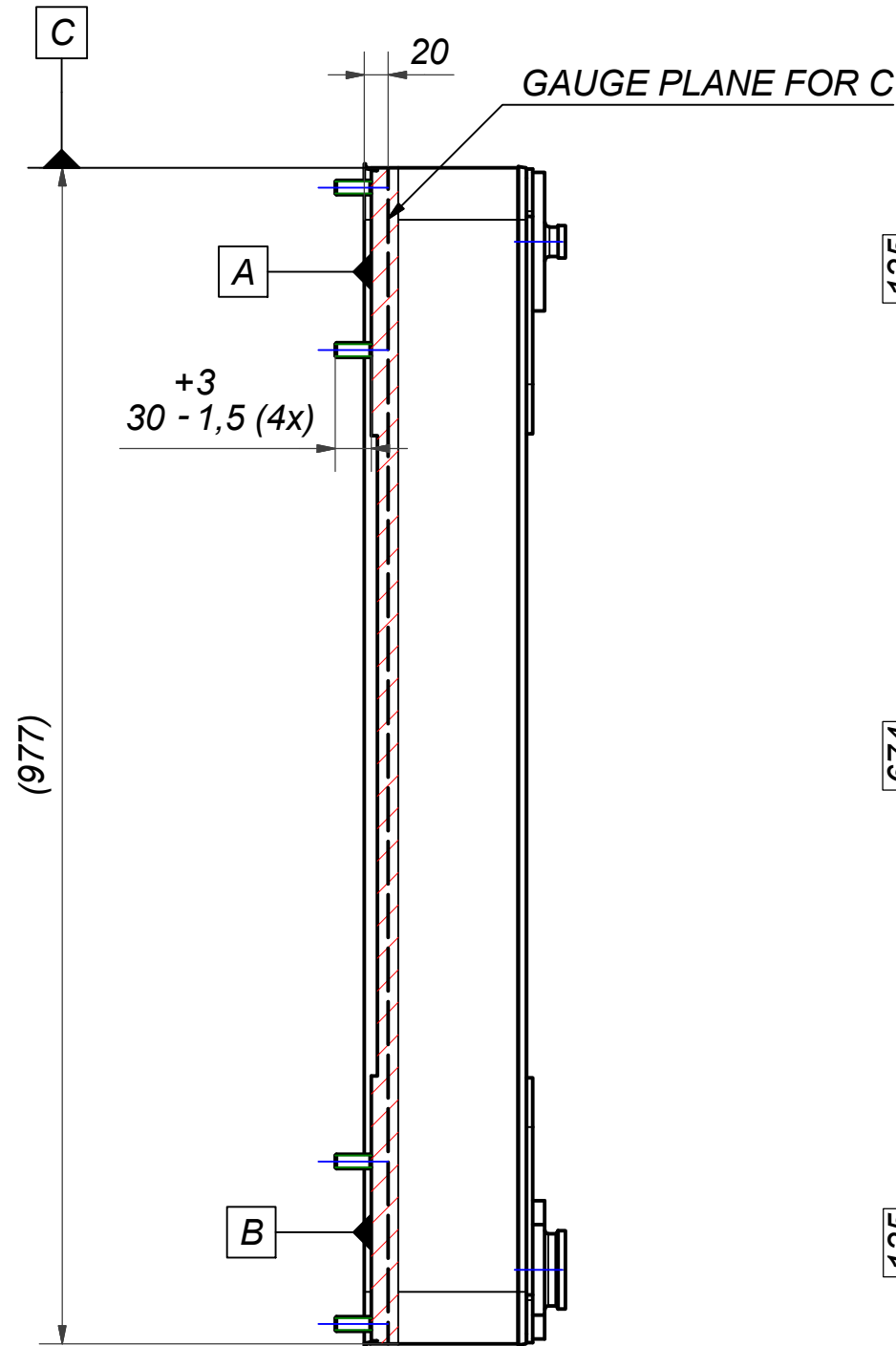
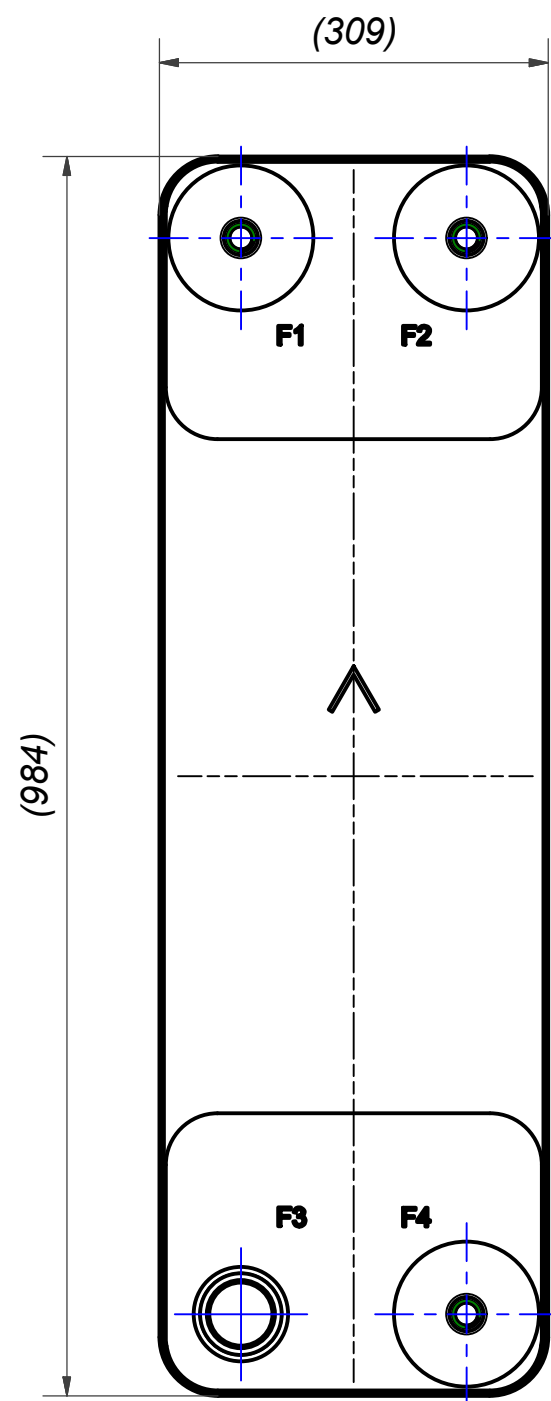
Item	QTY	Title	Article No.	Draw.Nr.
7	8	WASHER	45524	CC000843
6	8	R-LOCKNUT	45523	M12
5	2	SUPPORT LEG SHORT F GALVANIZED	36535	CC000978
4	2	HANGER GALVANIZED	41527	CC000699
3	8	WASHER	45562	CC000059
2	8	STUD BOLT	45522	M12x30

NOTE 1: IF COVER PLATE WASHER EXIST ON F-SIDE, THEN USE WASHER 45562 (POSITION 3 ON F-SIDE), OTHERWISE LEAVE F SIDE WITHOUT WASHERS.




Drawn	Checked	Approved	Created Date	General geometrical tolerancing ISO 2768	General surface finish R_a	Scale	Paper size
skze	PDM	PDM	2011-12-15			-	A3
 A DOVER COMPANY			Title 500T/439 COMPL OPTION SET (SHORT LEGS)				
			Article / Tool number 28391	Design Type CG	Drawing number CG500025	Revision 02	Sheet 1 (1)

Rev No	Alteration	Date	Checked	Approved
00				PDM

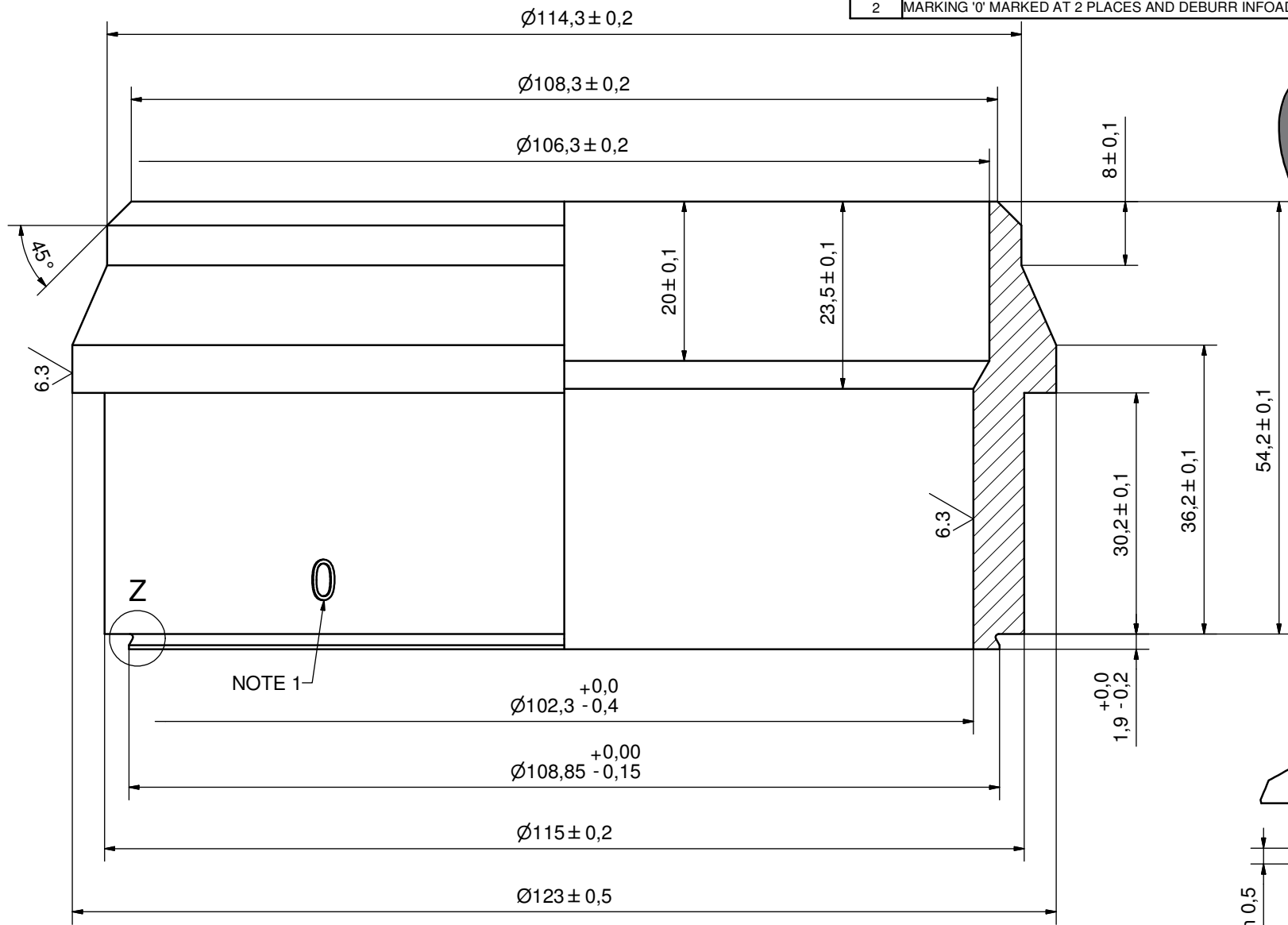
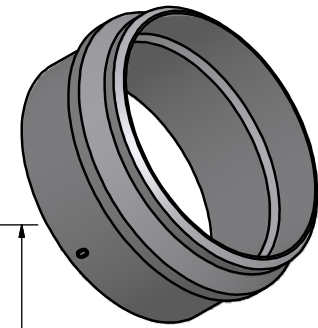


© Company Confidential, Property of SWEP International AB

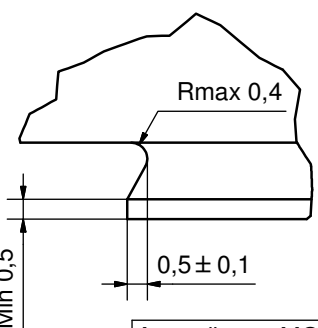


1	4	STUD BOLT M12 x 30 Art. No. 45522			M12 x 30	
Item	QTY	Description			Drawing / Article	
Drawn	Checked	Approved	Created Date	General geometrical tolerancing ISO 2768	General surface finish R_a	Scale
skds	PDM	PDM	2019-05-24			A3
 A DOVER COMPANY			500T/439 STUD BOLT LOC. P 4x135x674x135			
			Article number	Design Type	Drawing number	Revision
			24080	CG	00049439	00 1 (1)

Rev No.	Alteration	Date	Checked	Approved
2	MARKING '0' MARKED AT 2 PLACES AND DEBURR INFOADDED	2008/09/15	RJ	PDM



Z (8:1)



NOTE 1: MARKING ONLY VALID FOR IDENTIFICATION
0 = 304 MATERIAL
PRESENT AT 2 PLACES 180° FROM EACH OTHER

DEBURR SHARP EDGES; MAX 0,4

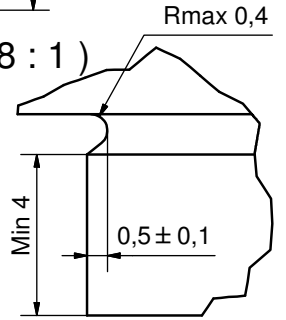
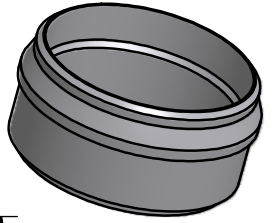
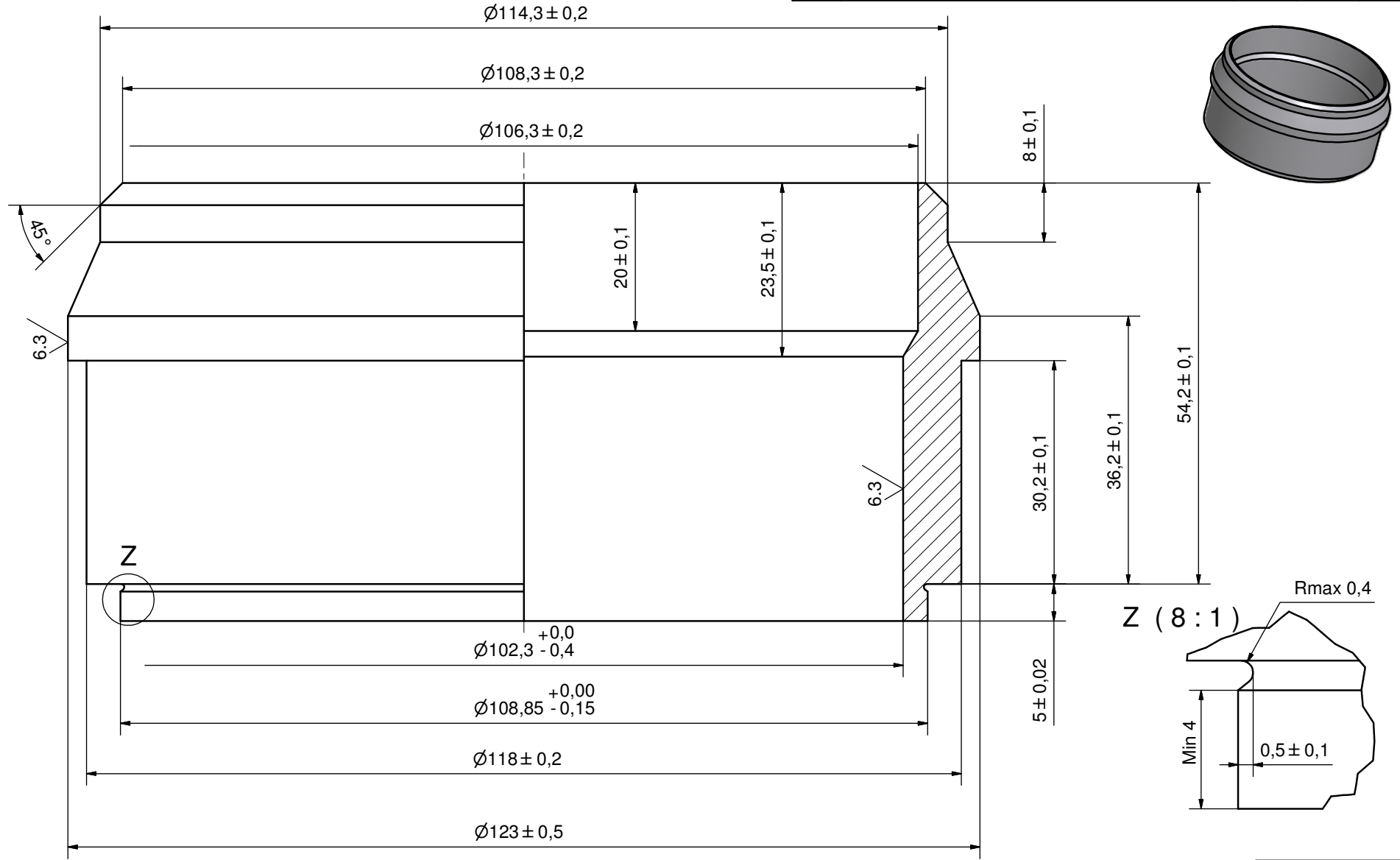
According to MQS
MATERIAL

Drawn	Checked	Approved	Created Date	General geometrical tolerancing ISO 2768	General surface finish R_a	Scale
SH	PDM	PDM	2007-06-12	m	3.2	2:1
Title			WELD 114			
Article number		Drawing number		Revision	Sheet	
-		CD000892		2	1 (1)	



© Company Confidential, Property of SWEP International AB

Rev No.	Alteration	Date	Checked	Approved
2	NND Height Tolerance was +0/-0.2	2010/07/01	INRJ	PDM



DEBURR SHARP EDGES; MAX 0,4

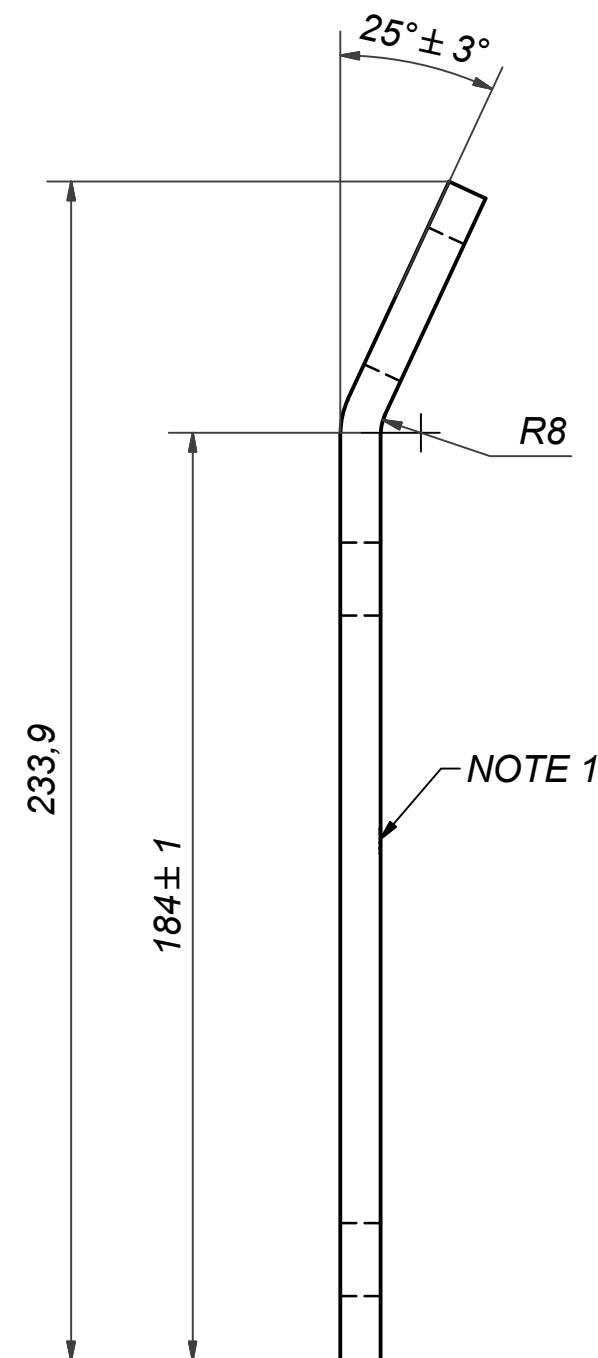
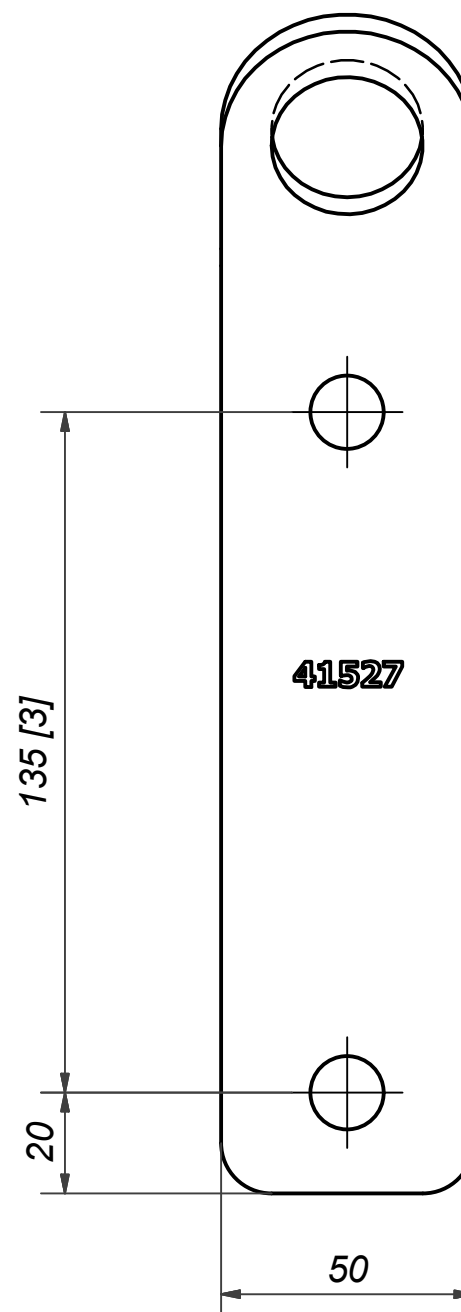
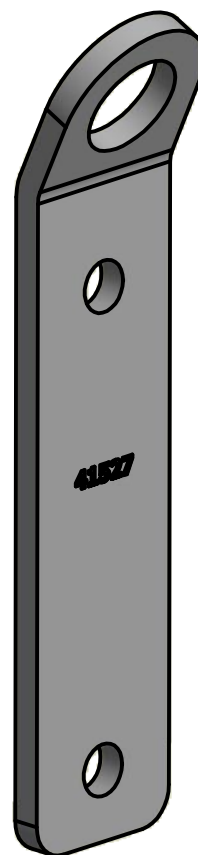
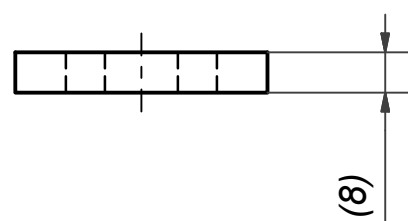
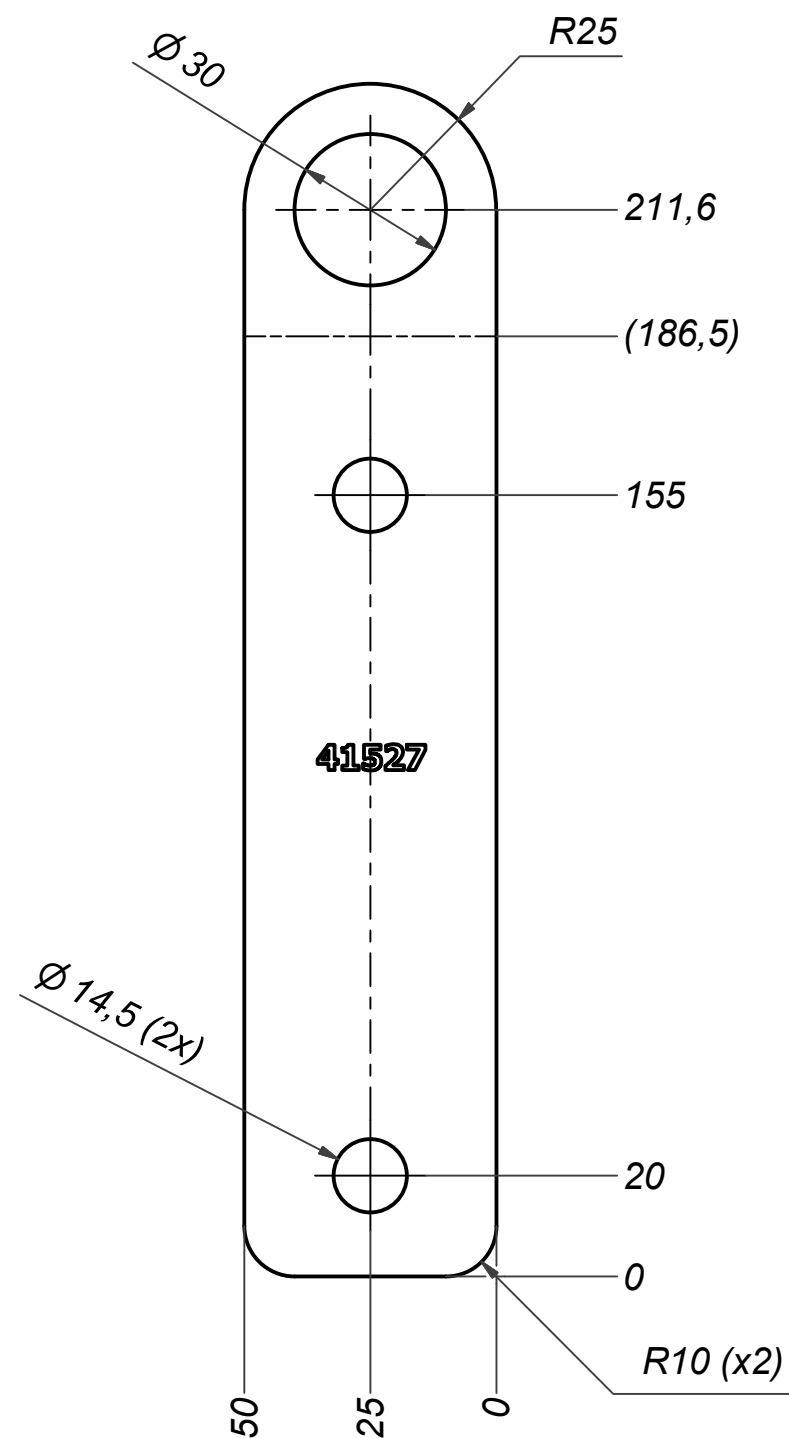
According to MQS
MATERIAL



Drawn	SH	Checked	PDM	Approved	PDM	Created Date	2007-06-12	General geometrical tolerancing ISO 2768	m	General surface finish R_a	3.2	Scale	-
Title												WELD 114	
Article number												-	
Drawing number												CD000883	
Revision												2	
Sheet												1 (1)	

FLAT PATTERN

Rev No	Alteration	Date	Checked	Approved
05	Added NOTE 2; Updated whole drawing	2017-06-27	skpt	PDM



NOTE 2: [3] - CRITICAL/SPECIAL CHARACTERISTIC TO BE FOLLOWED
NOTE 1: ARTICLE No. TO BE MARKED ON THIS SIDE.
SURFACE PREPARATION: DEGREASED AND CLEANED.
SURFACE TREATMENT: ELECTRO GALVANIZED 5-25 µm.

ACCORDING TO MQS
MATERIAL

© Company Confidential, Property of SWEP International AB

AXINTRA
ÉCHANGEURS THERMIQUES

SWEP
A DOVER COMPANY

Drawn	Checked	Approved	Created Date	General geometrical tolerancing ISO 2768:	General surface finish R_a :	Scale	Paper size
import	PDM	PDM	2007-11-22	m	3.2	-	A3
Title: 500T/439 HANGER							
Article number	Design Type	Drawing number	Revision	Sheet			
41527	CC	CC000699	05	1 (1)			

