

V120T

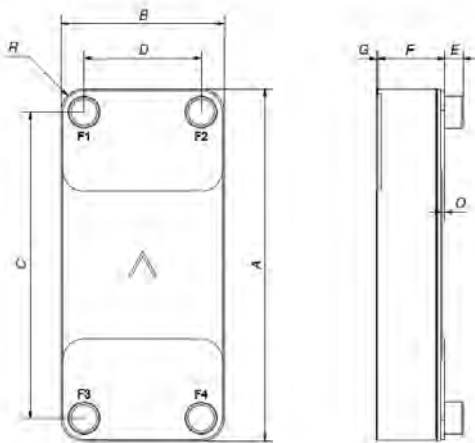
Le V120T est un évaporateur qui offre une efficacité élevée avec de nombreux réfrigérants. Il combine un format compact et un agencement de plaques spécialement développé pour créer un échangeur thermique extrêmement efficace. Le V120T est le choix idéal pour les chillers, les pompes à chaleur et les économiseurs.



Spécifications de base

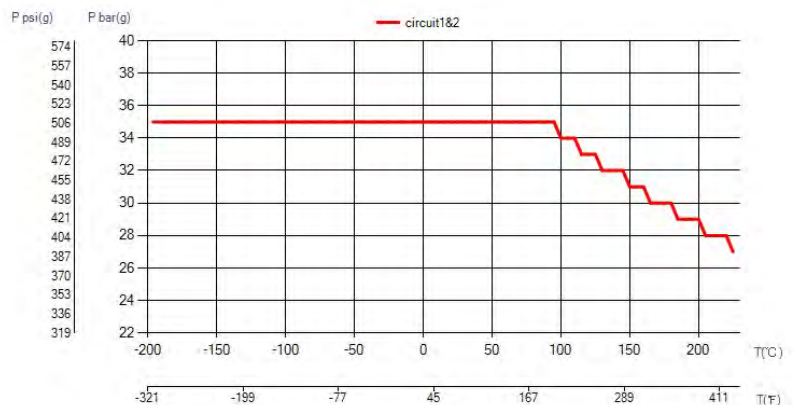
Nombre de plaques max. (NoP)	250
Débit volumétrique max.	27,4 m³/h (17.61 gpm)
Volume du canal	0.241/0.241 dm³ (0.0085/0.0085 ft³)
Matières	Plaques en acier inoxydable 316/316L, brasage cuivre
Poids sans les connexions	8.33+(0.424*NoP) kg 18.36+(0.935*NoP) lb
Taille la taille des Particules (mm)	1

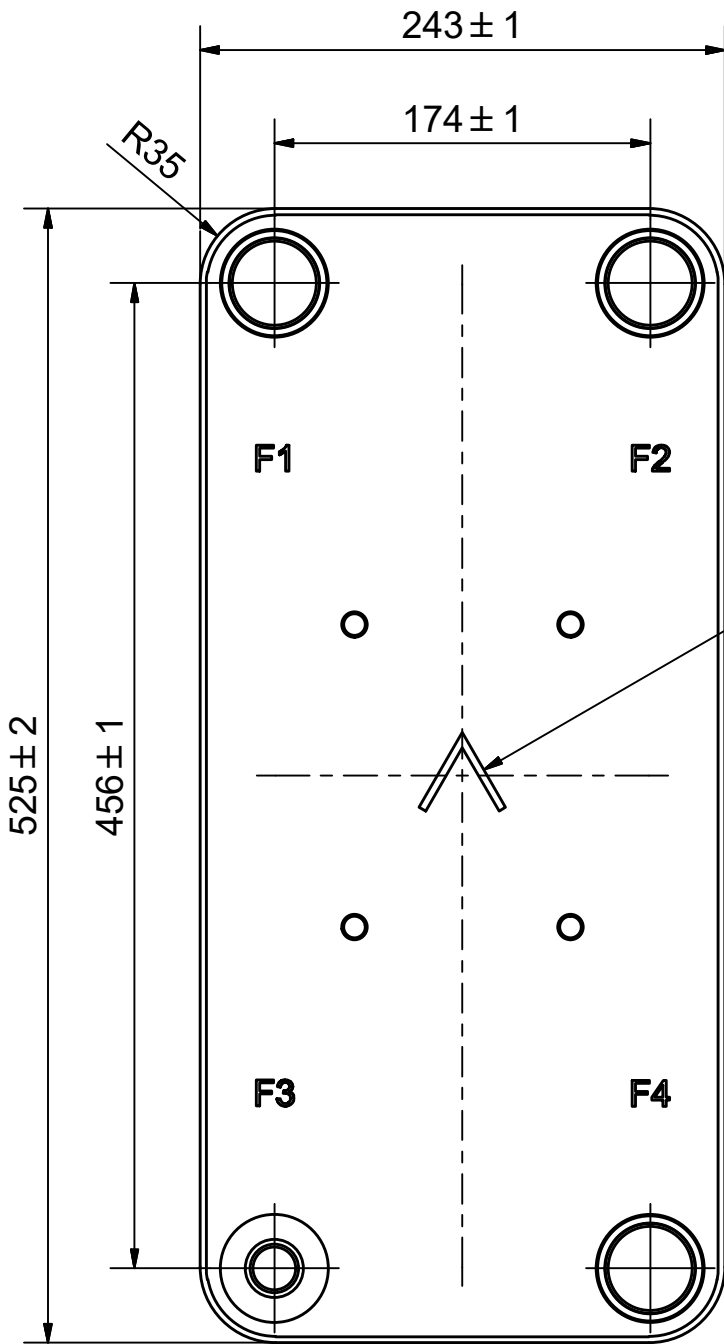
Les dimensions standard



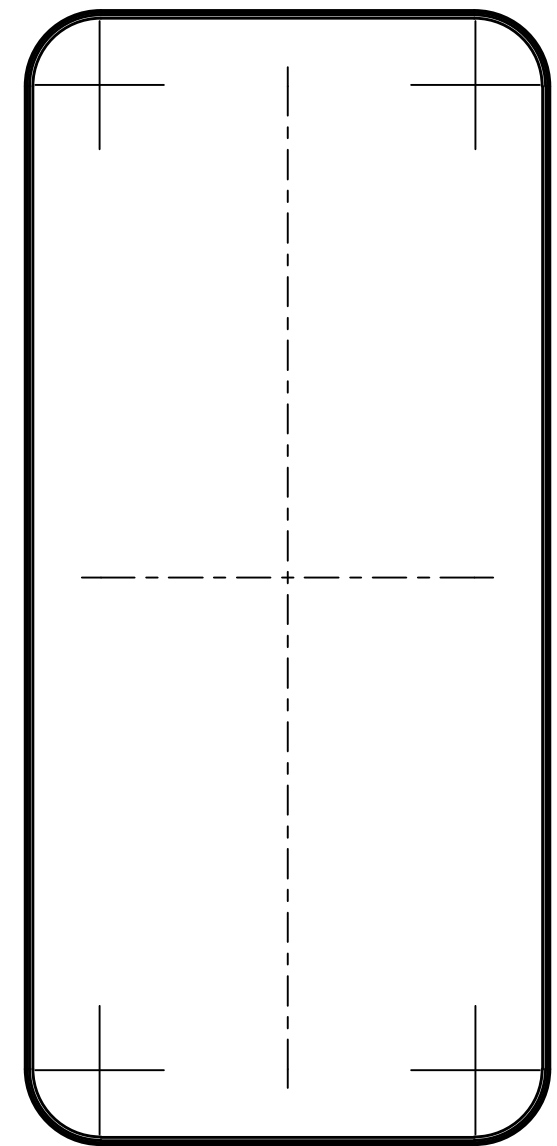
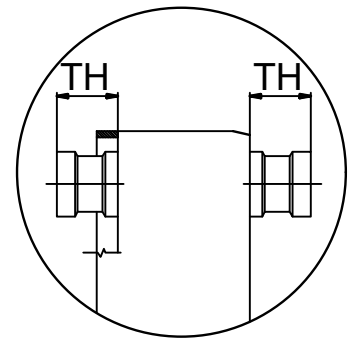
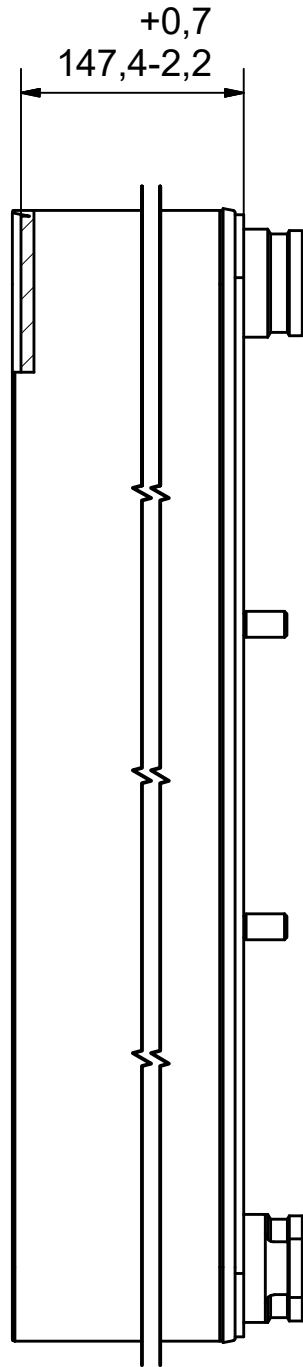
#	MM	IN
A	525	20.67
B	243	9.57
C	456	17.95
D	174	6.85
F	10,00+2,29*(NoP)	0.39+0.09*(NoP)
G	4	0.16
R	35	1.38
E_1	27	1.06
E_2	54	2.13

PED pression / température






NOTE 1

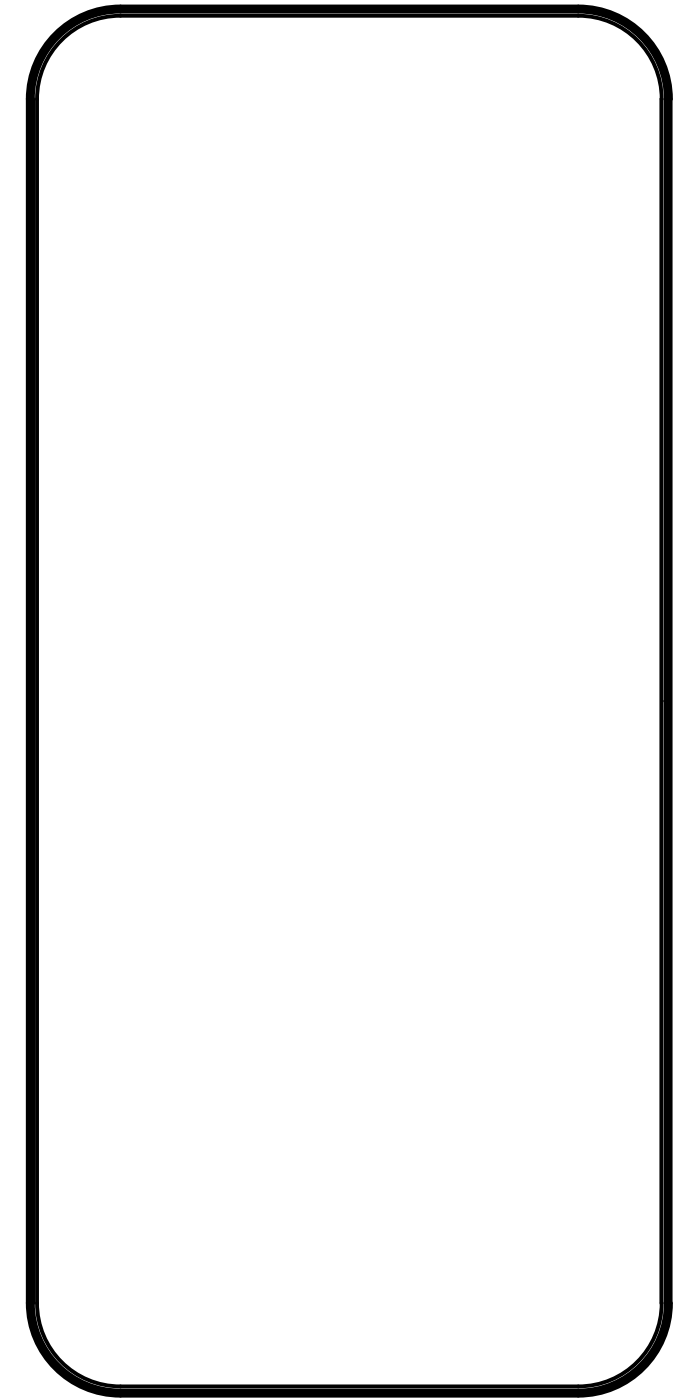
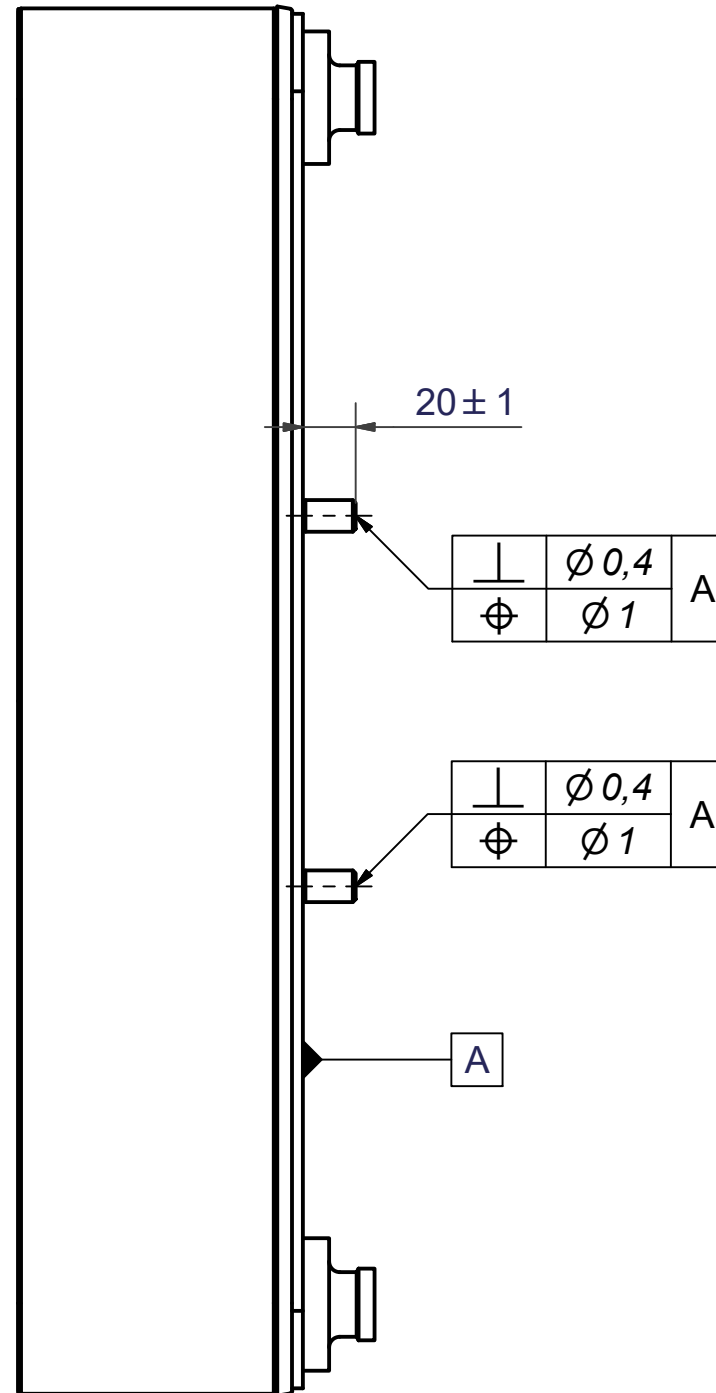
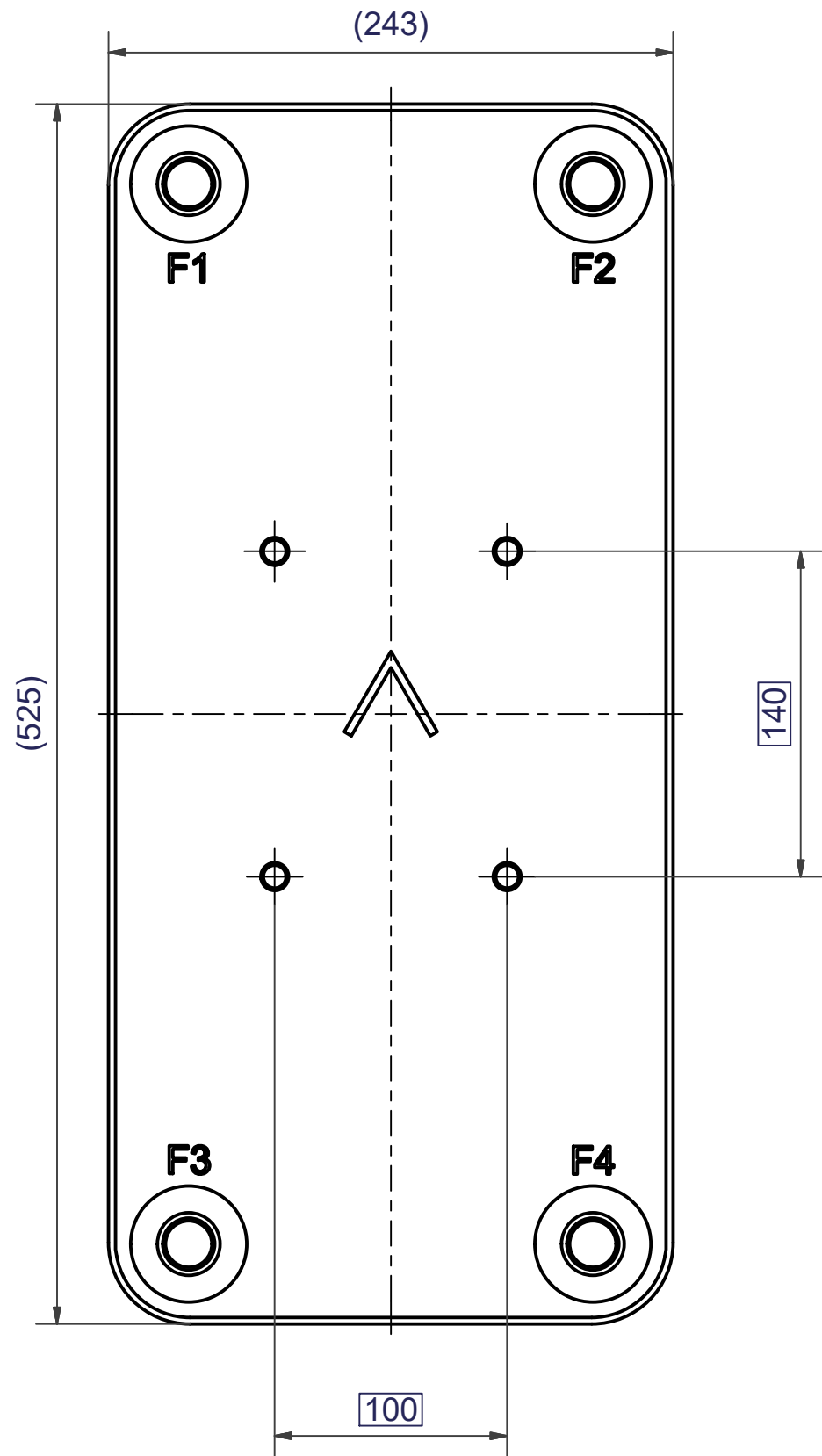


NOTE 1 ALTERNATE MARKING: STICKER OR STAMP

F4	45083	SOLDER 42U, TH = 27,1	CD000100
F3	45475	SOLDER 22U, TH = 27,1	CD000017
F2	45083	SOLDER 42U, TH = 27,1	CD000100
F1	45083	SOLDER 42U, TH = 27,1	CD000100
F	21118	B120T/50 BOLT LOC F 4x C140x100	CG450024_1

Title		V120THx60/1P-SC-S 22U+3x42U	
 A DOVER COMPANY	Created Date	2024-04-09	Created By
	Article/Configuration number	0218577.0	Drawing number
			AU
			AU00041236_0218577.0

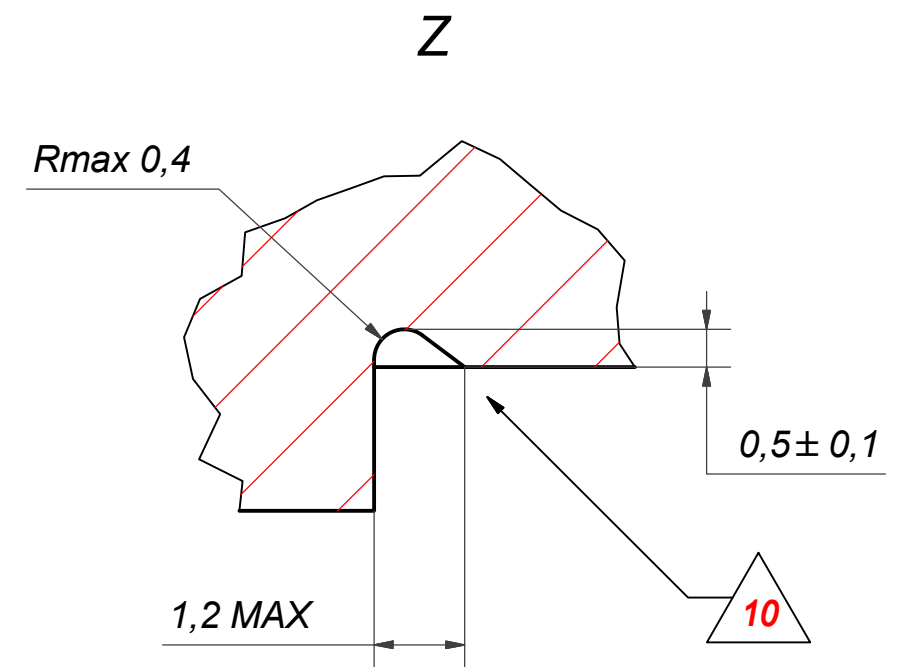
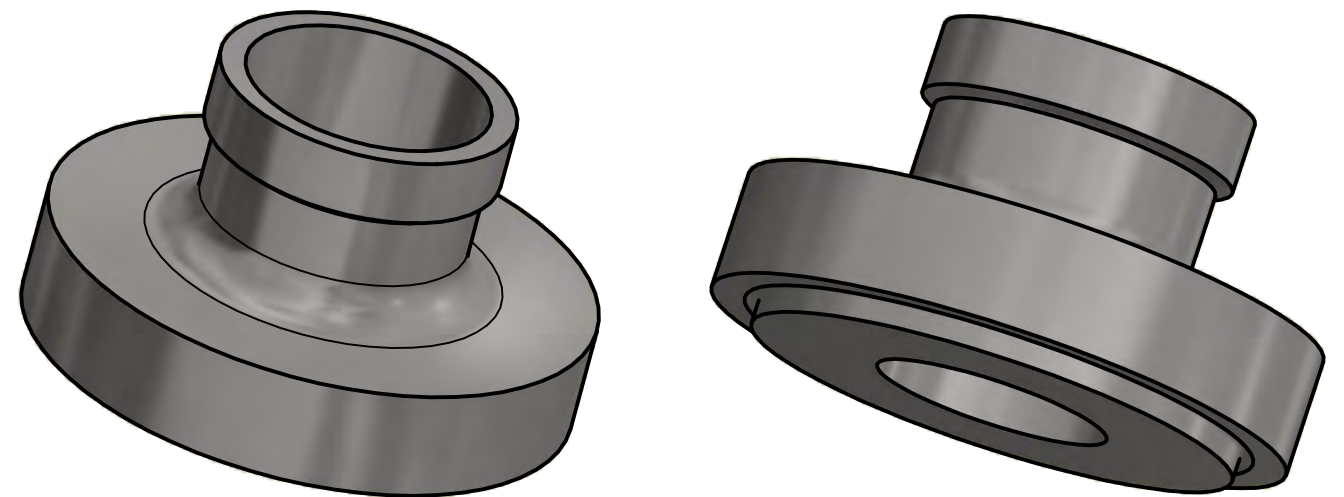
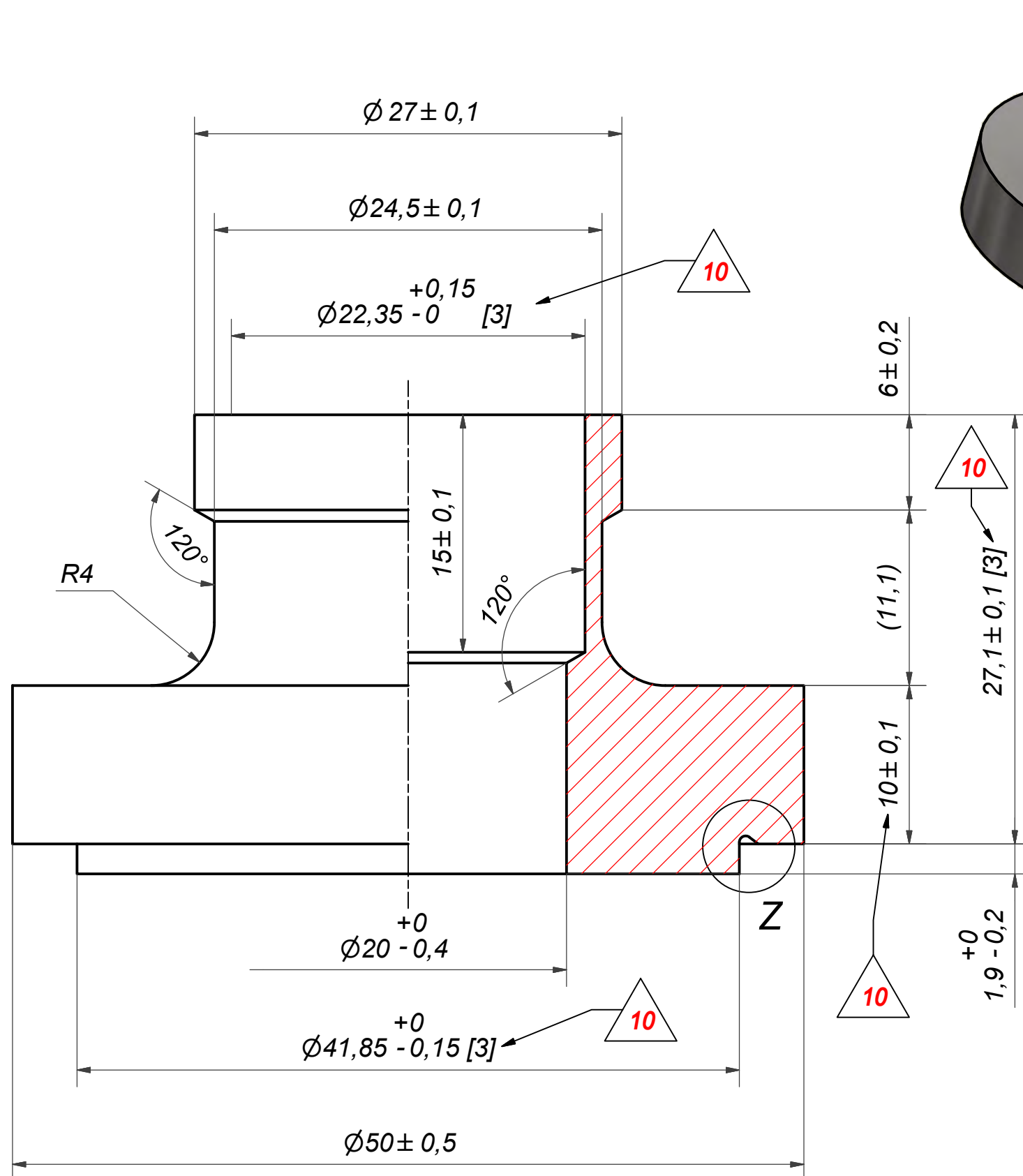
Pos	Article No	Title / Denomination, code, material, dimension etc	Drawing No./ref	Pos	Article No	Title / Denomination, code, material, dimension etc	Drawing No./ref
-----	------------	---	-----------------	-----	------------	---	-----------------



1	4	STUD BOLT M12x20 ART. NO. 45095	M12x20
IT	QTY	DESCRIPTION	Drawing No./Ref
lathe	PDM	PDM	2004-10-12
General geometrical tolerancing ISO 2768:		m	General surface finish R _a : 3.2
Title		B120T/50 BOLT LOC F 4x C140x100	
Article number		21118	Drawing number
Revision		00	Sheet
		1 (1)	



Rev No	Alteration	Date	Checked	Approved
10	DESIGN CHANGE ACCORDING TO ECN-000385 RD102844	2023-09-28	CNFRG	PDM




© Company Confidential, Property of SWEP International AB

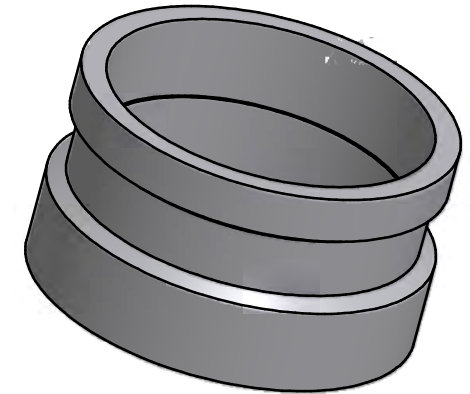
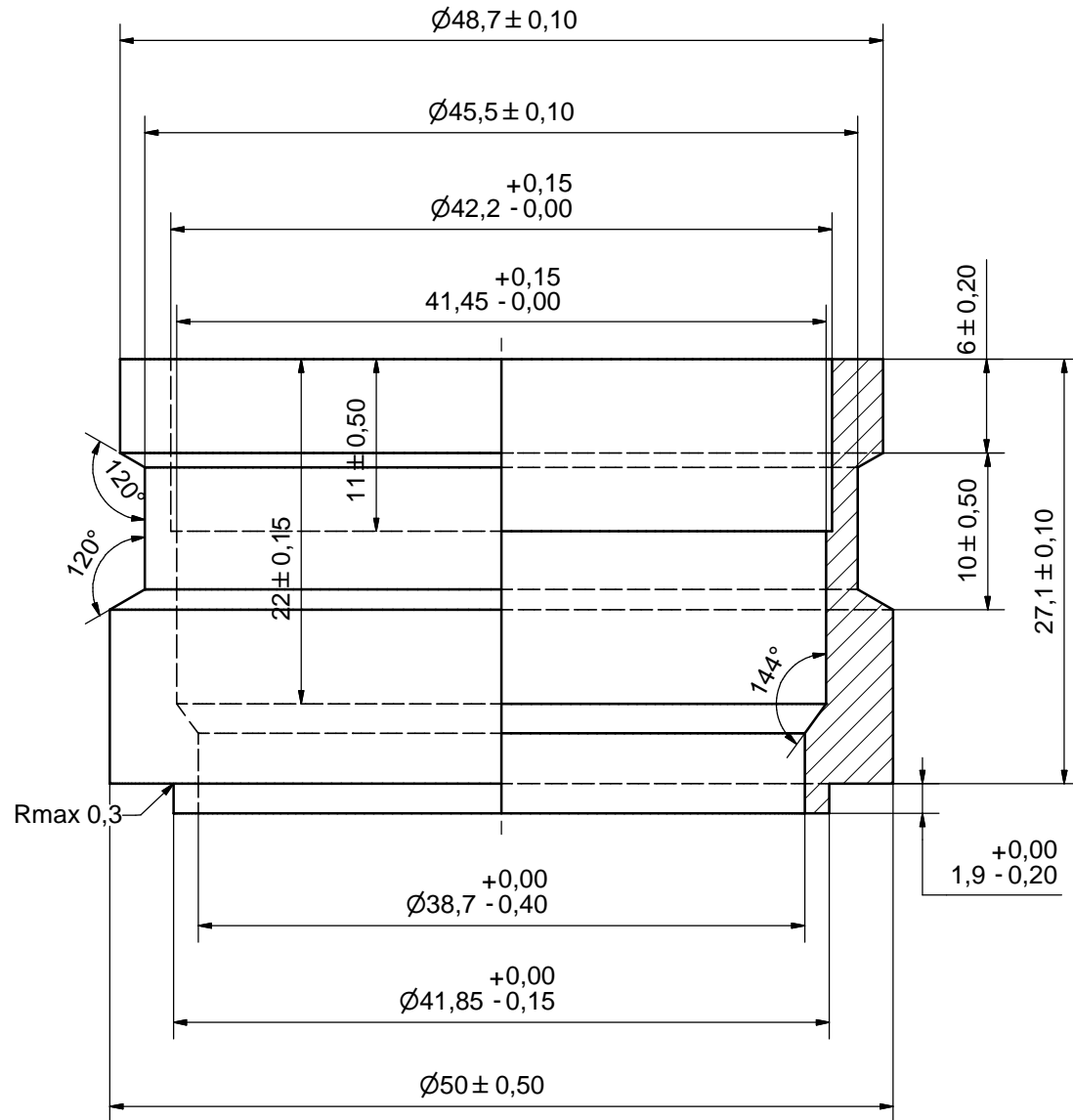
NOTE 2: [3] - CRITICAL/SPECIAL CHARACTERISTIC TO BE FOLLOWED

NOTE 1: DEBURR SHARP EDGES; MAX 0.4

ACCORDING TO MQS
MATERIAL

Drawn	Checked	Approved	Created Date	General geometrical tolerancing ISO 2768:	General surface finish R_a :	Scale	Paper size		
miguser	PDM	PDM	1993-05-28	m	3.2	-	A3		
			Title					SOLDER 22U	
			Article number	Design Type	Drawing number	Revision	Sheet		
			CD	CD000017	10	1 (1)			

Rev No.	Alteration	Date	Checked	Approved
12	DEBURRING INFO ADDED	2009/03/10	TL	PDM



SHARP EDGES DEBURRED MAX 0,4

ACCORDING TO MQS
MATERIAL

Drawn	Checked	Approved	Created Date	General geometrical tolerancing ISO 2768	General surface finish R_a	Scale
SA	TP	VP	1990-09-08	m	3.2	-
Title				SOLDER 42U		
Article number		Drawing number	Revision	Sheet		
-		CD000100	12	1 (1)		

