

B120T

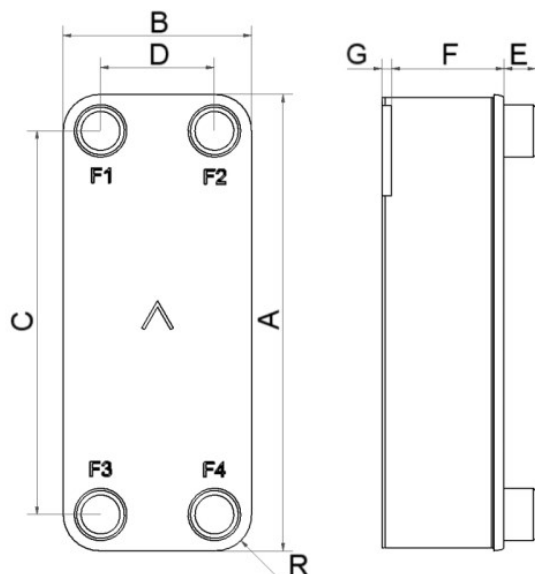
Le B120T a été spécialement conçu pour fonctionner dans des applications de chauffage et industrielles exigeantes, généralement des applications eau-eau et des refroidisseurs d'huile. Ce produit a contribué à l'échange rapide des échangeurs de chaleur traditionnels à plaques et joint, ou à calandre en faveur des BPHE. Il est largement utilisé comme condenseur dans des applications de climatisation et de réfrigération.



Spécifications de base

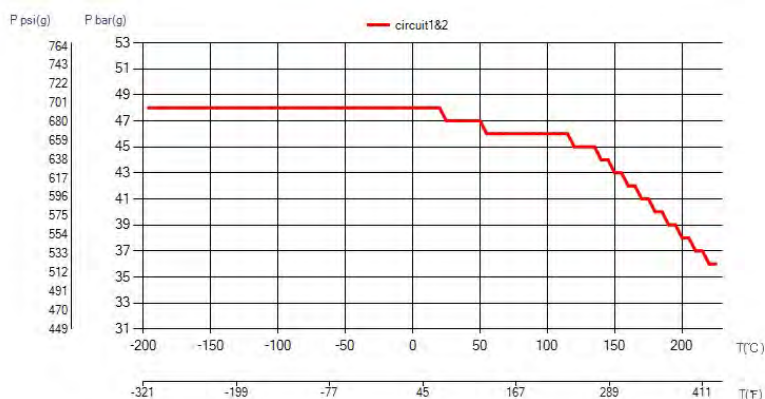
Nombre de plaques max. (NoP)	250
Débit volumétrique max.	27,4 m³/h (17.61 gpm)
Volume du canal	0.241/0.241 dm³ (0.0085/0.0085 ft³)
Matières	Plaques en acier inoxydable 316, brasage cuivre
Poids sans les connexions	8.33+(0.404*NoP) kg 18.36+(0.891*NoP) lb

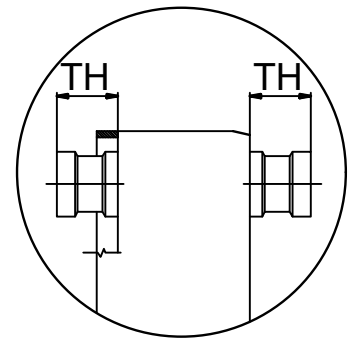
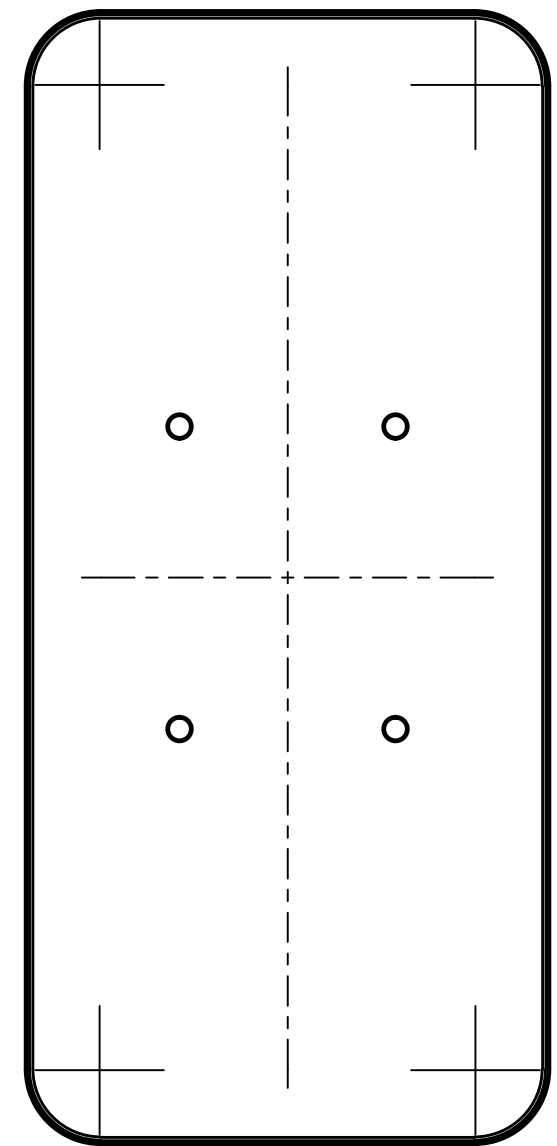
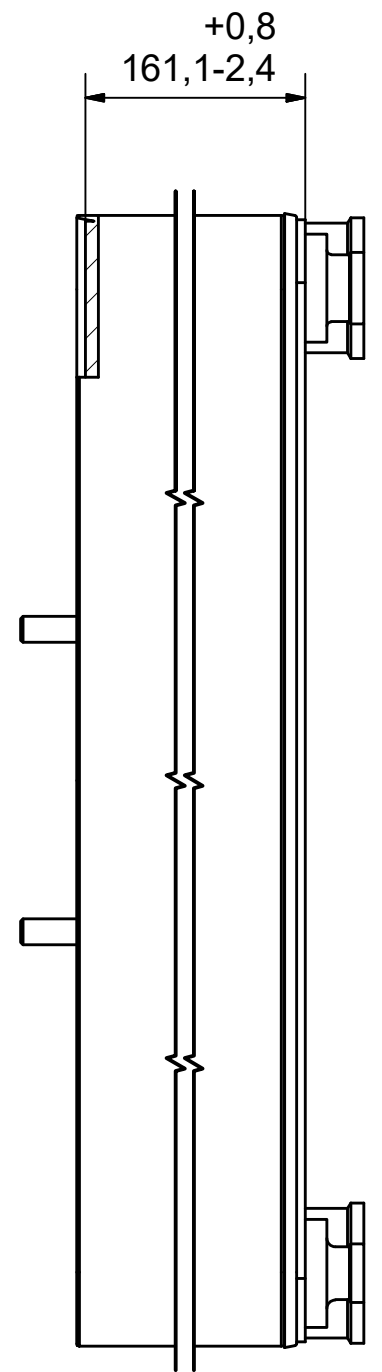
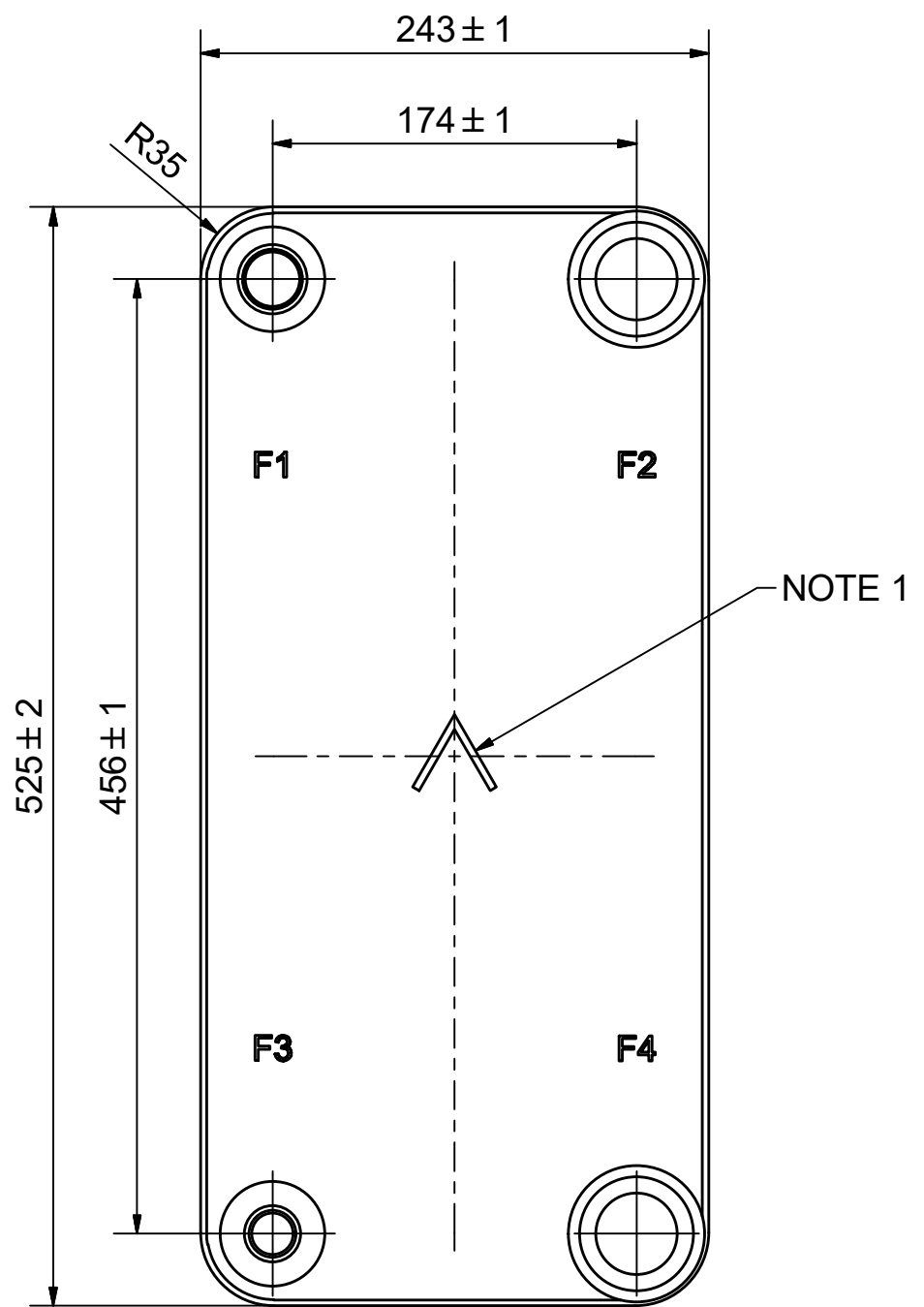
Les dimensions standard



#	MM	IN
A	525	20.67
B	243	9.57
C	456	17.95
D	174	6.85
F	10.00+2.29*(NoP)	0.39+0.09*(NoP)
G	4	0.16
R	35	1.38
E_1	27	1.06



PED pression / température

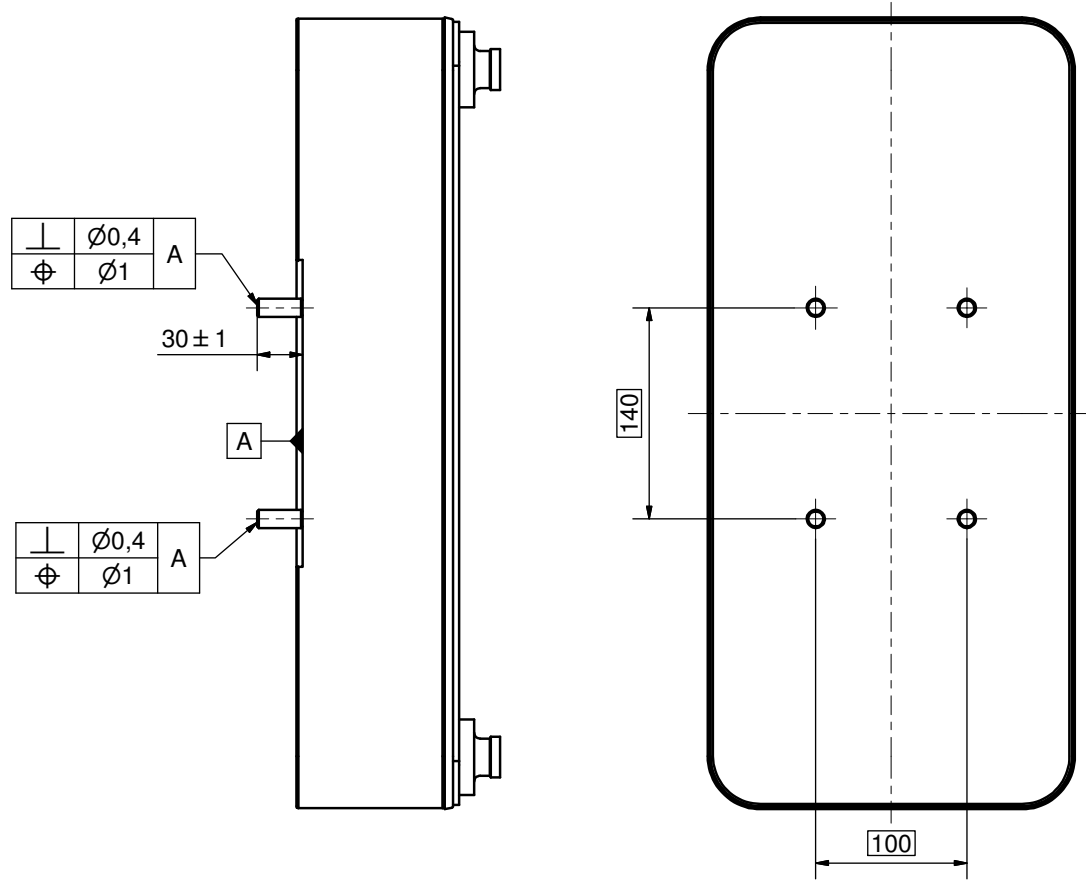
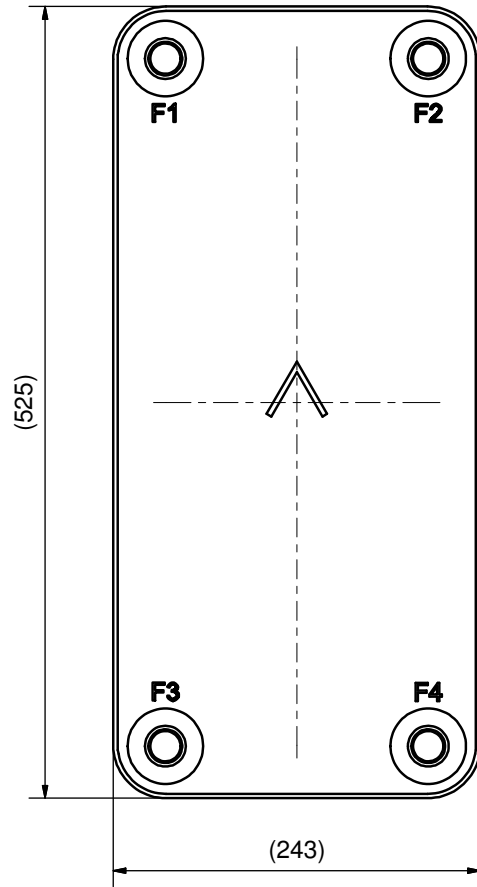





NOTE 1 ALTERNATE MARKING: STICKER OR STAMP

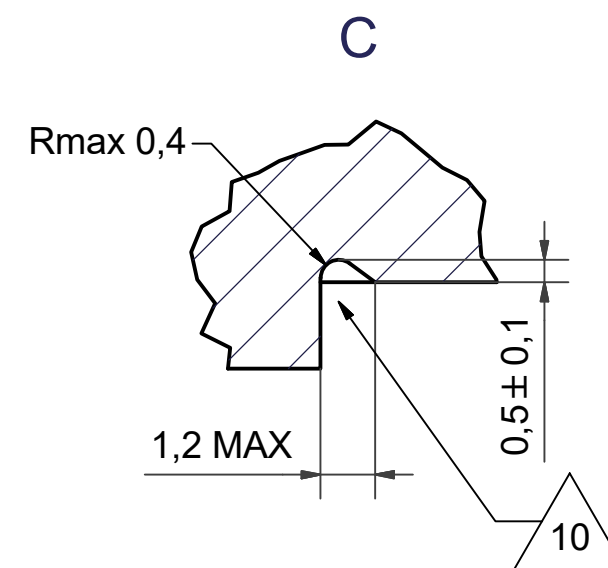
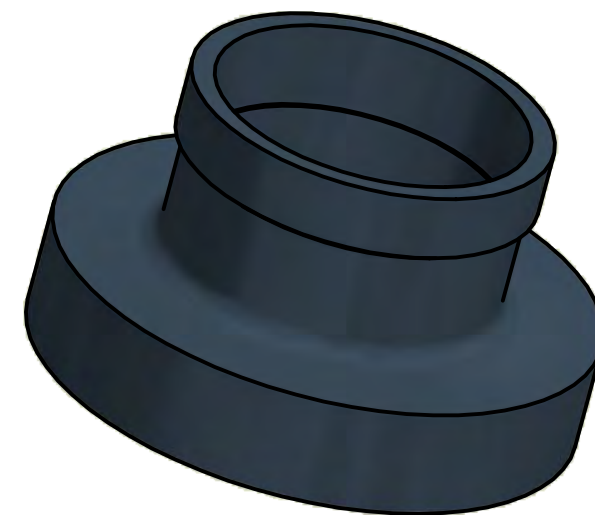
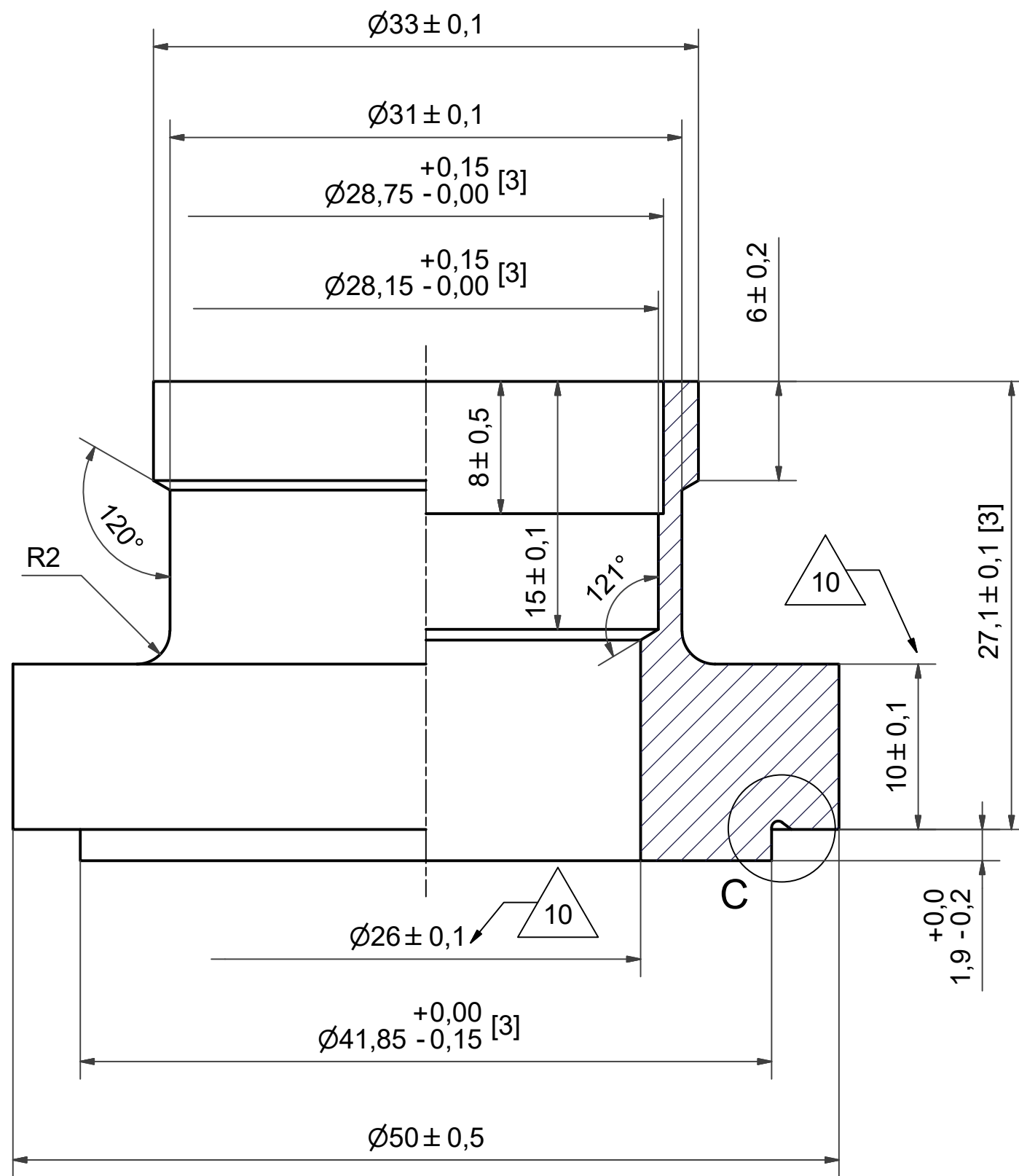
F4	46211	SOLDER ø54,3, TH = 27,1	CD000329				
F3	45475	SOLDER 22U, TH = 27,1	CD000017				
F2	46211	SOLDER ø54,3, TH = 27,1	CD000329				
F1	45496	SOLDER 28U, TH = 27,1	CD000013	P	21356	B120T/50 S.B. LOC P 4xC140x100	CG450021_1
Pos	Article No	Title / Denomination, code, material, dimension etc	Drawing No./ref	Pos	Article No	Title / Denomination, code, material, dimension etc	Drawing No./ref

Title			
B120THx66/1P-SC-M 22U+28U+2x54.3			
		Created Date	Created By
		2024-06-13	AU
		Article/Configuration number	Drawing number
		0232429.1	AU00050330_0232429.1



1	4	STUD BOLT M12x30 ART.NO 45522				M12x30
IT	QTY	TITLE				Drawing No.
Drawn	Checked	Approved	Created Date	General geometrical tolerancing ISO 2768	General surface finish R_a	Scale
ANO	PDM	PDM	2005-02-28	m	3.2	1:1
		Title				
		Article number	Drawing number	Revision	Sheet	
		21356		CG450021	-	1 (1)

Rev No	Alteration	Date	Checked	Approved
10	DESIGN CHANGE ACCORDING TO ECN-000385 RD102844	2023-09-28	CNFRG	VP



NOTE 2 : [3] - CRITICAL/SPECIAL CHARACTERISTIC TO BE FOLLOWED

NOTE 1: DEBURR SHARP EDGES; MAX 0,4

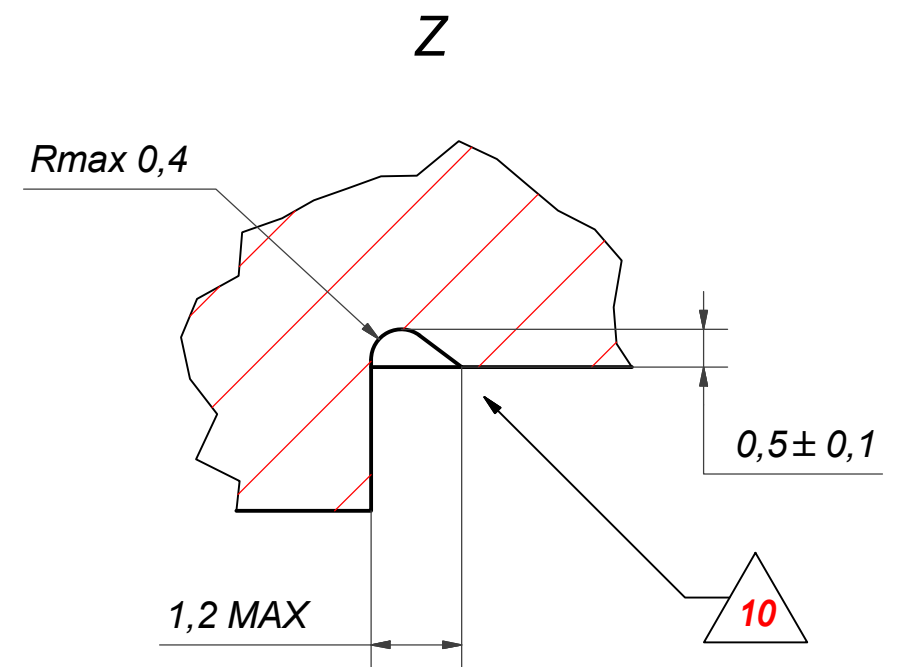
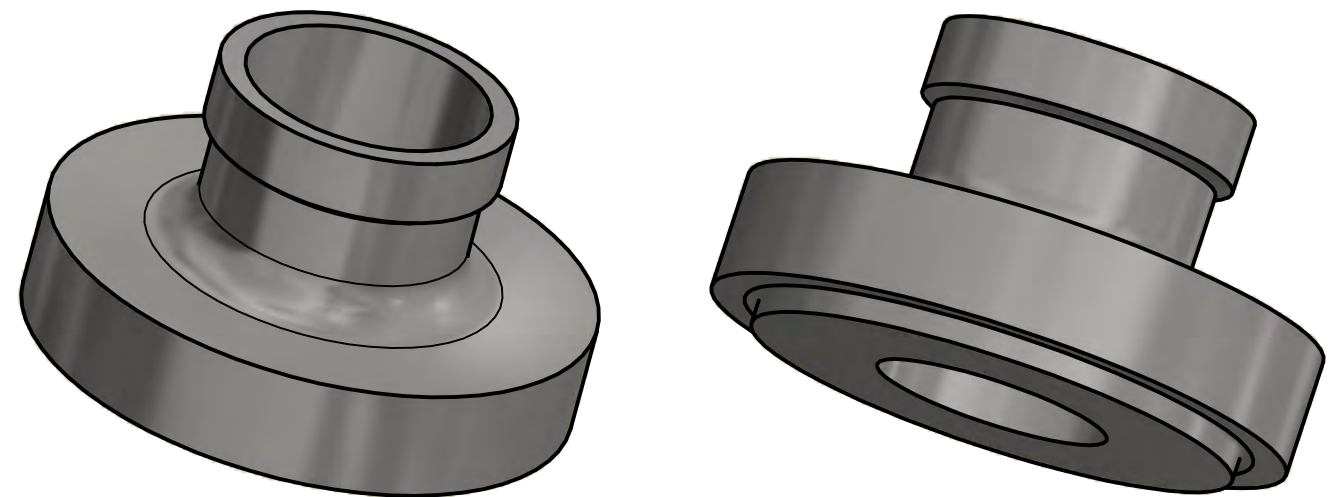
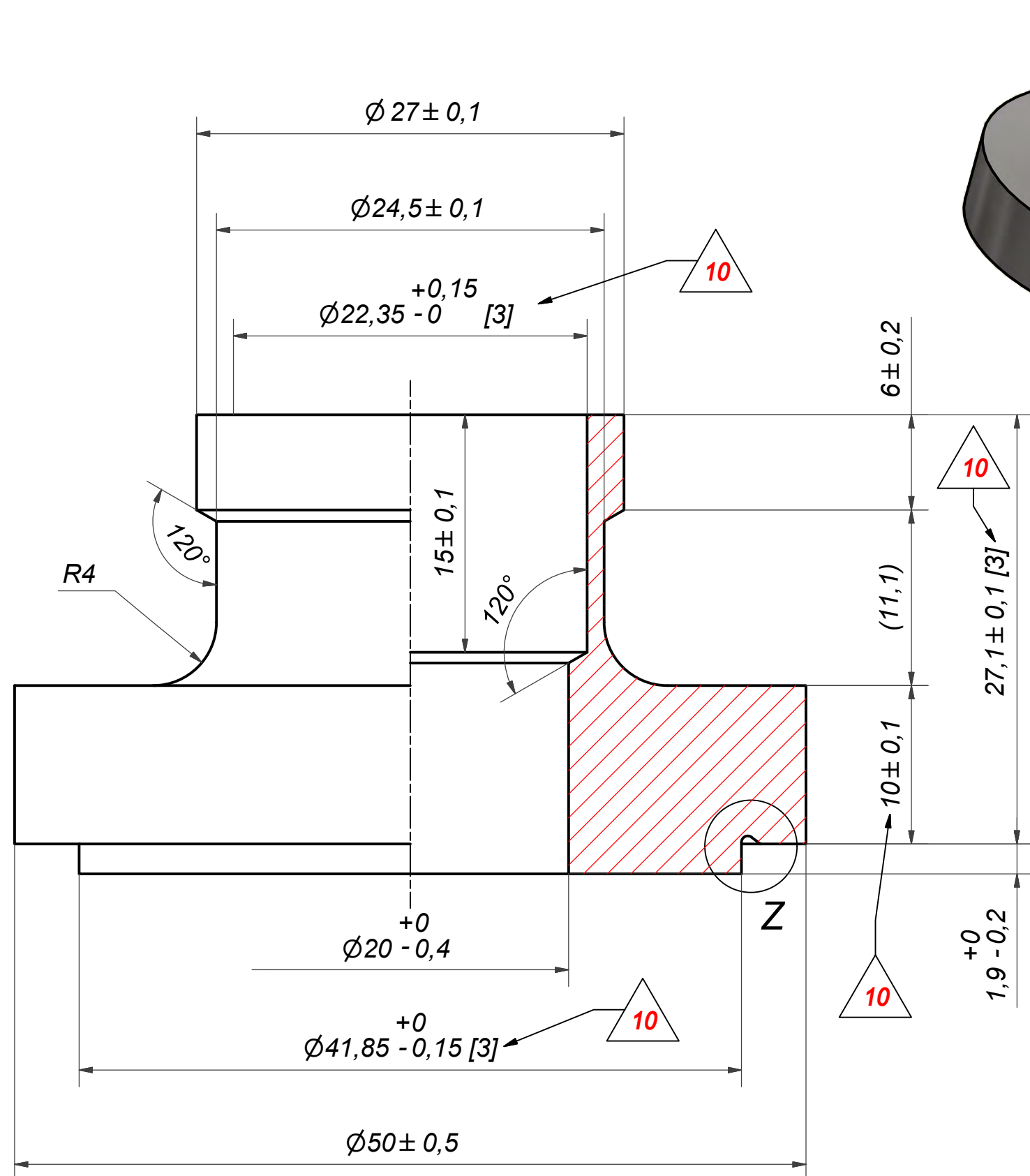
ACCORDING TO MQS
MATERIAL

© Company Confidential, Property of SWEP International AB



Drawn miguser	Checked TP	Approved VP	Created Date 1993-05-28	General geometrical tolerancing ISO 2768: m	General surface finish R_a : 3.2	Scale -	Paper size A3
			Title SOLDER 28U				
			Article number CD	Design Type CD	Drawing number CD000013	Revision 10	Sheet 1 (1)

Rev No	Alteration	Date	Checked	Approved
10	DESIGN CHANGE ACCORDING TO ECN-000385 RD102844	2023-09-28	CNFRG	PDM



© Company Confidential, Property of SWEP International AB

NOTE 2: [3] - CRITICAL/SPECIAL CHARACTERISTIC TO BE FOLLOWED

NOTE 1: DEBURR SHARP EDGES; MAX 0.4

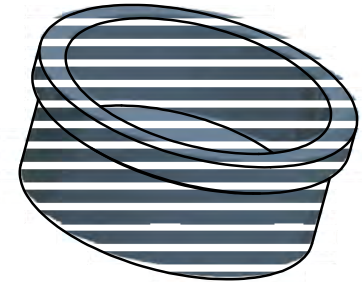
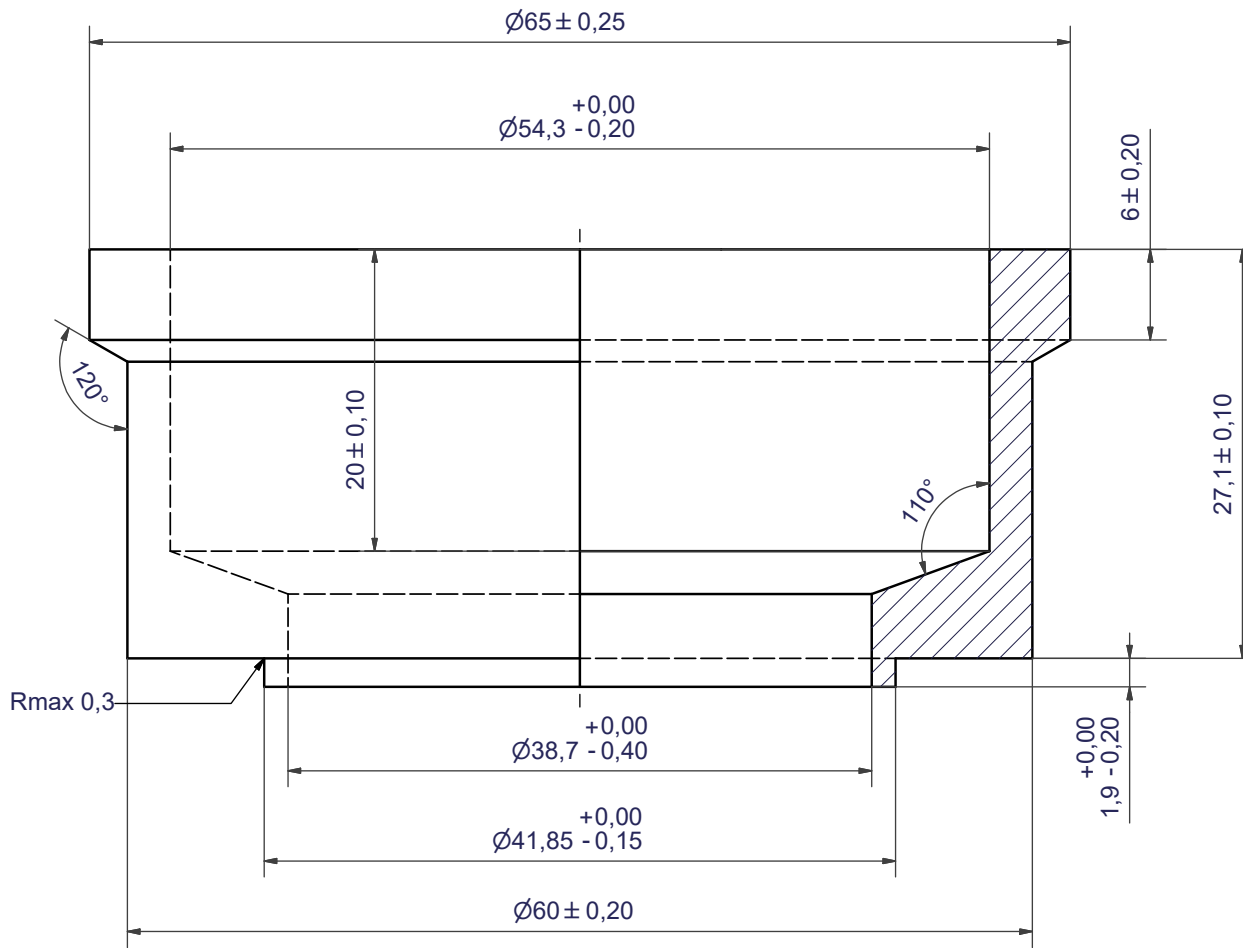


ACCORDING TO MQS
MATERIAL

Drawn	Checked	Approved	Created Date	General geometrical tolerancing ISO 2768:	General surface finish R_a :	Scale	Paper size
miguser	PDM	PDM	1993-05-28	m	3.2	-	A3
Title				SOLDER 22U			
Article number		Design Type	Drawing number	Revision	Sheet		
		CD	CD000017	10	1 (1)		



Rev No.	Alteration	Date	Checked	Approved
6	Changed ø65 dim tolerance to ±0,25	2010/01/15	ANO	PDM




SHARP EDGES DEBURRED MAX 0,4

ACCORDING TO MQS

MATERIAL

AXINTRA
ÉCHANGEURS THERMIQUES

Drawn	Checked	Approved	Created Date	General geometrical tolerancing ISO 2768	General surface finish R _a	Scale
JA	EMS	BOS	1997-04-03	m	3.2	-
			SOLDER ø54,3			
Article number		Drawing number		Revision	Sheet	
-		CD000329		6	1 (1)	