

B15T

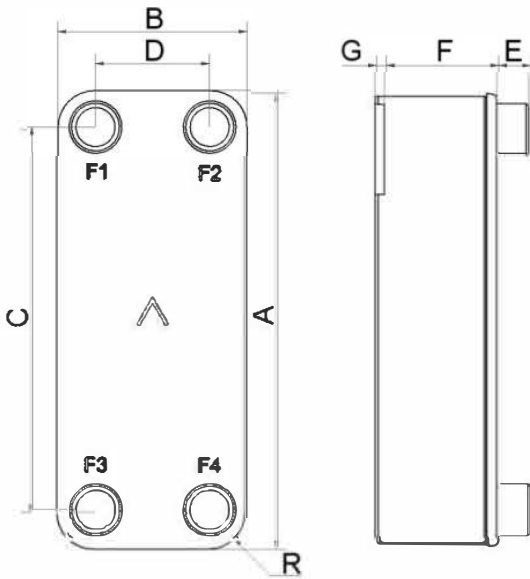
Très performant, le B15T a été développé pour offrir une efficacité thermique maximale. La précision de nos échangeurs autorise un fonctionnement efficace même avec des pincements extrêmement faibles. Ce produit est donc un choix évident pour les applications exigeant un flux thermique élevé, ainsi que pour un meilleur rendement énergétique.



Spécifications de base

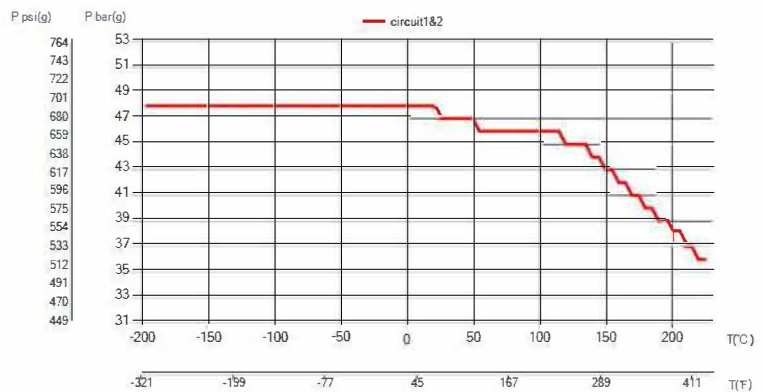
Nombre de plaques max. (NoP)	60
Débit volumétrique max.	4 m ³ /h (17.61 gpm)
Volume du canal	0.063/0.063 dm ³ (0.0022/0.0022 ft ³)
Matières	Plaques en acier inoxydable 316, brasage cuivre
Poids sans les connexions	1.25+(0.104*NoP) kg 2.76+(0.229*NoP) lb

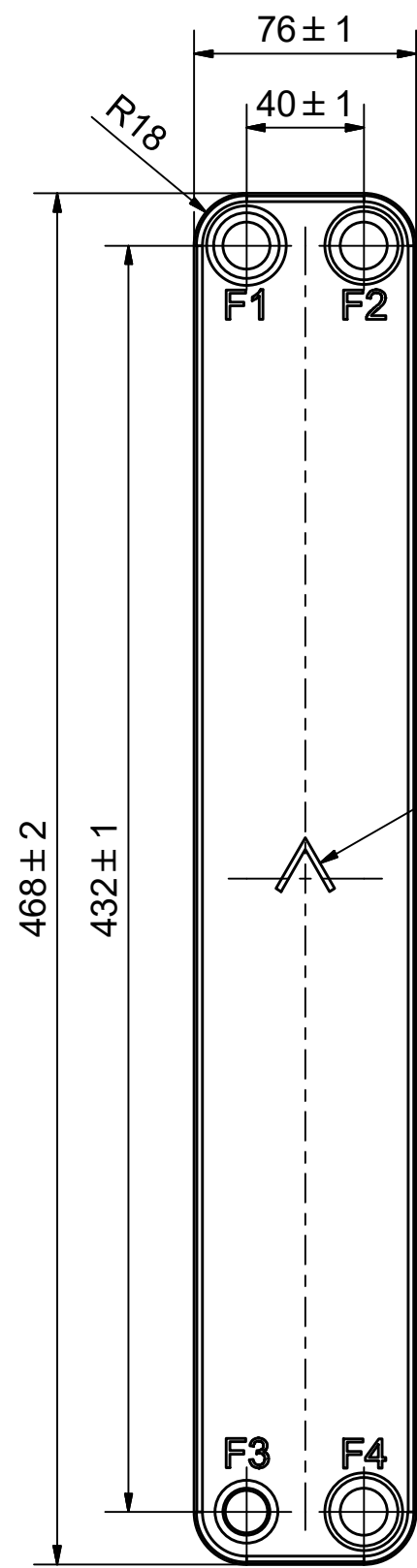
Les dimensions standard



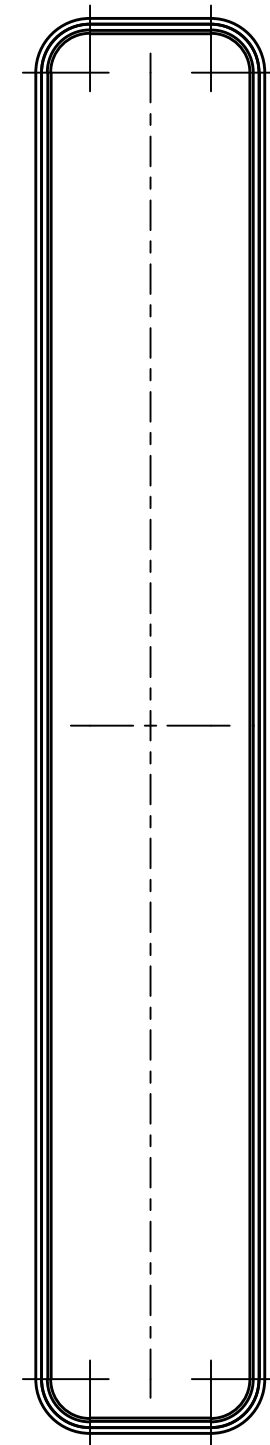
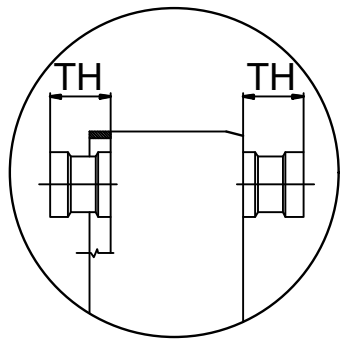
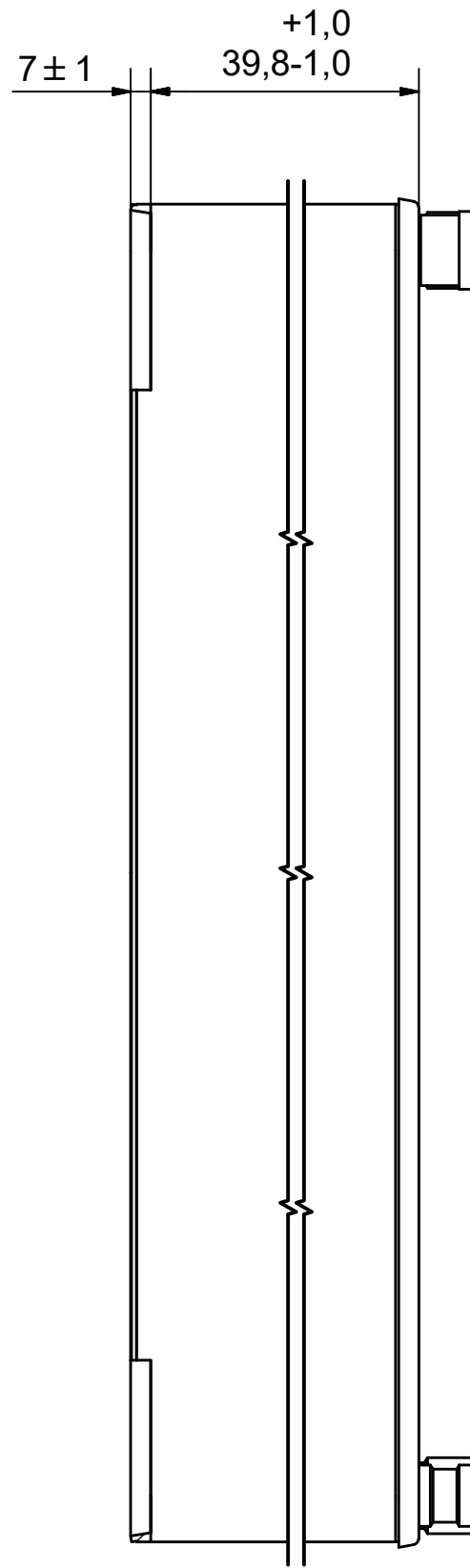
#	MM	IN
A	468	18.43
B	76	2.99
C	432	17.01
D	40	1.57
F	4.00+2.24*(NoP)	0.16+0.09*(NoP)
G	7	0.28
R	18	0.71
E_1	20	0.79

PED pression / température






NOTE 1



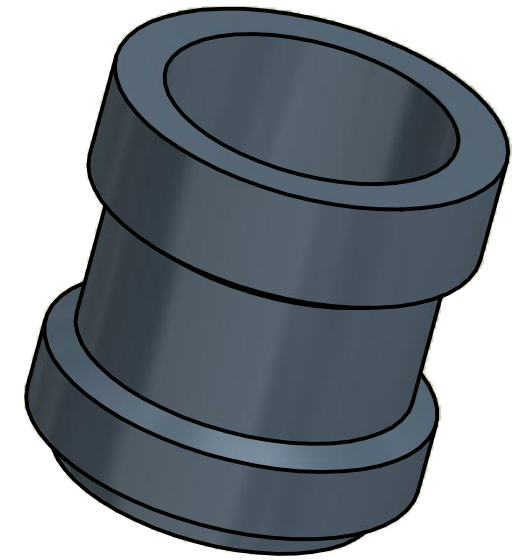
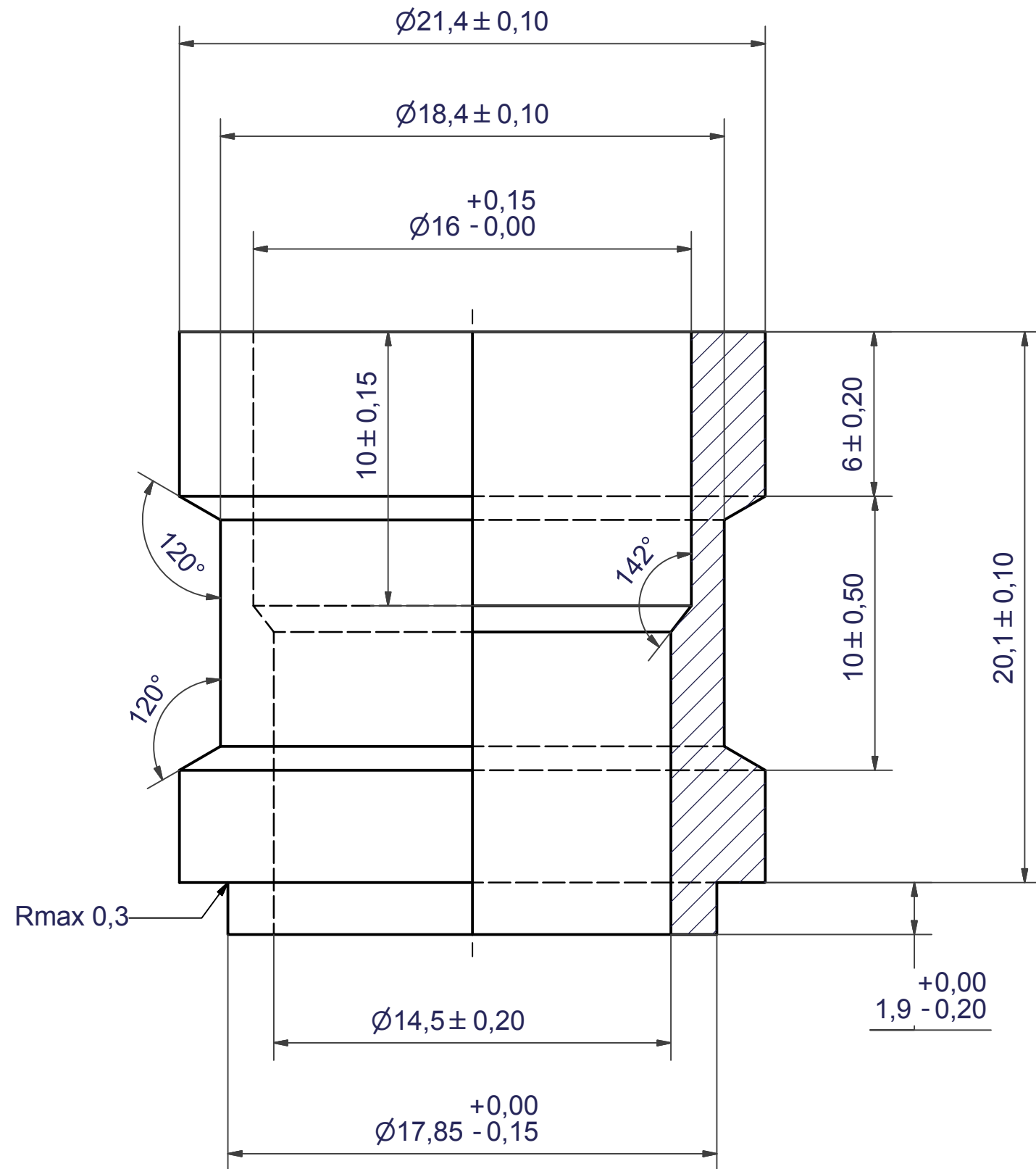
NOTE 1 ALTERNATE MARKING: STICKER OR STAMP

F4	45063	NPT 3/4- 14, TH = 20,1	CD000076
F3	45079	SOLDER ø16, TH = 20,1	CD000096
F2	45063	NPT 3/4- 14, TH = 20,1	CD000076
F1	45072	SOLDER 22U, TH = 20,1	CD000094
Pos	Article No	Title / Denomination, code, material, dimension etc	Drawing No./ref



Title B15THx16/1P-SC-M 16+22U+2x3/4"NPT			
 A DOVER COMPANY		Created Date 2024-06-17	Created By AU
		Article/Configuration number 0236270.0	Drawing number AU00050684_0236270.0
Pos	Article No	Title / Denomination, code, material, dimension etc	Drawing No./ref

Rev No.	Alteration	Date	Checked	Approved
8	REDRAWN IN INVENTOR	2004/07/07	TN	PDM

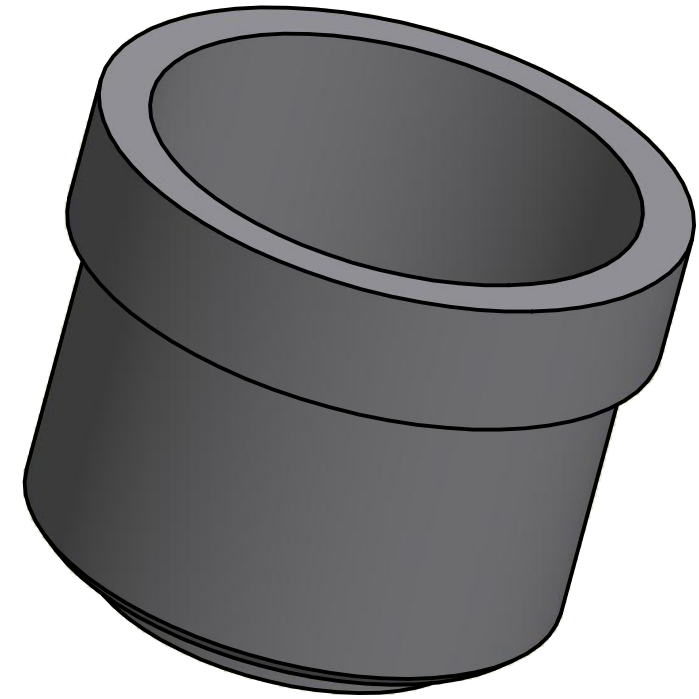
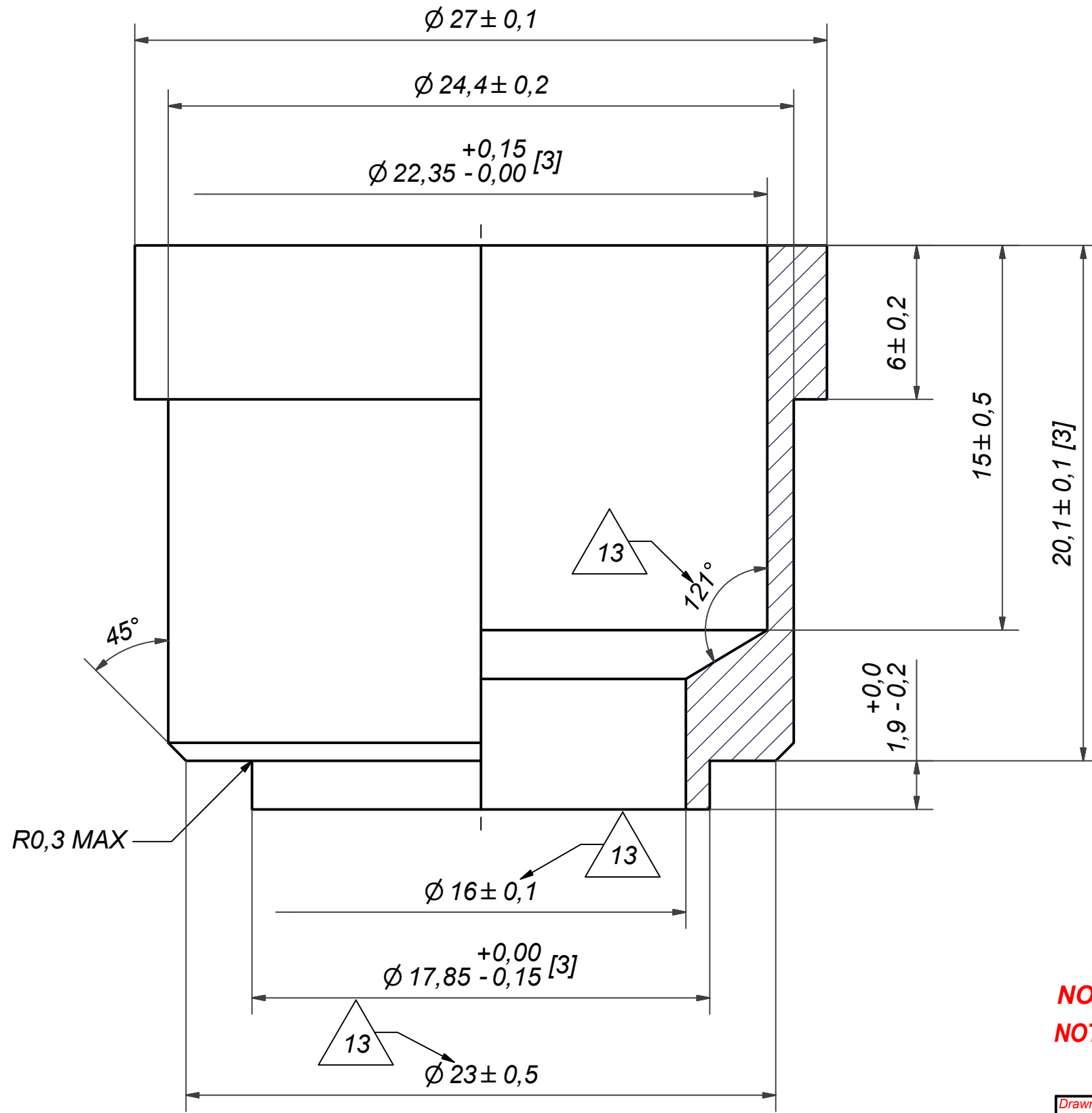


© Company Confidential, Property of SWEP International AB



Drawn lathe	Checked TP	Approved VP	Created Date 1990-09-08	General geometrical tolerancing ISO 2768 m	General surface finish R_a 3.2		Scale 5:1
 A DOVER COMPANY			Title SOLDER $\varnothing 16$				
			Article number	Drawing number CD000096	Revision 08	Sheet 1 (1)	

Rev No	Alteration	Date	Checked	Approved
13	DESIGN CHANGE ACCORDING TO RD100699 AND ADDED MARK FOR CRITICAL CHARACTERISTICS	2013-11-05	INPKP	VP

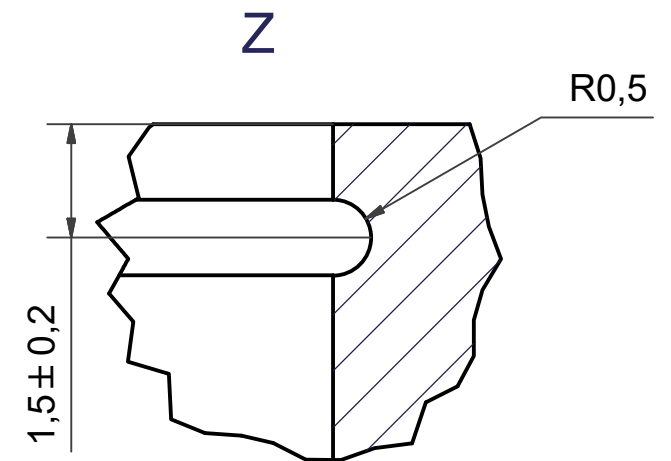
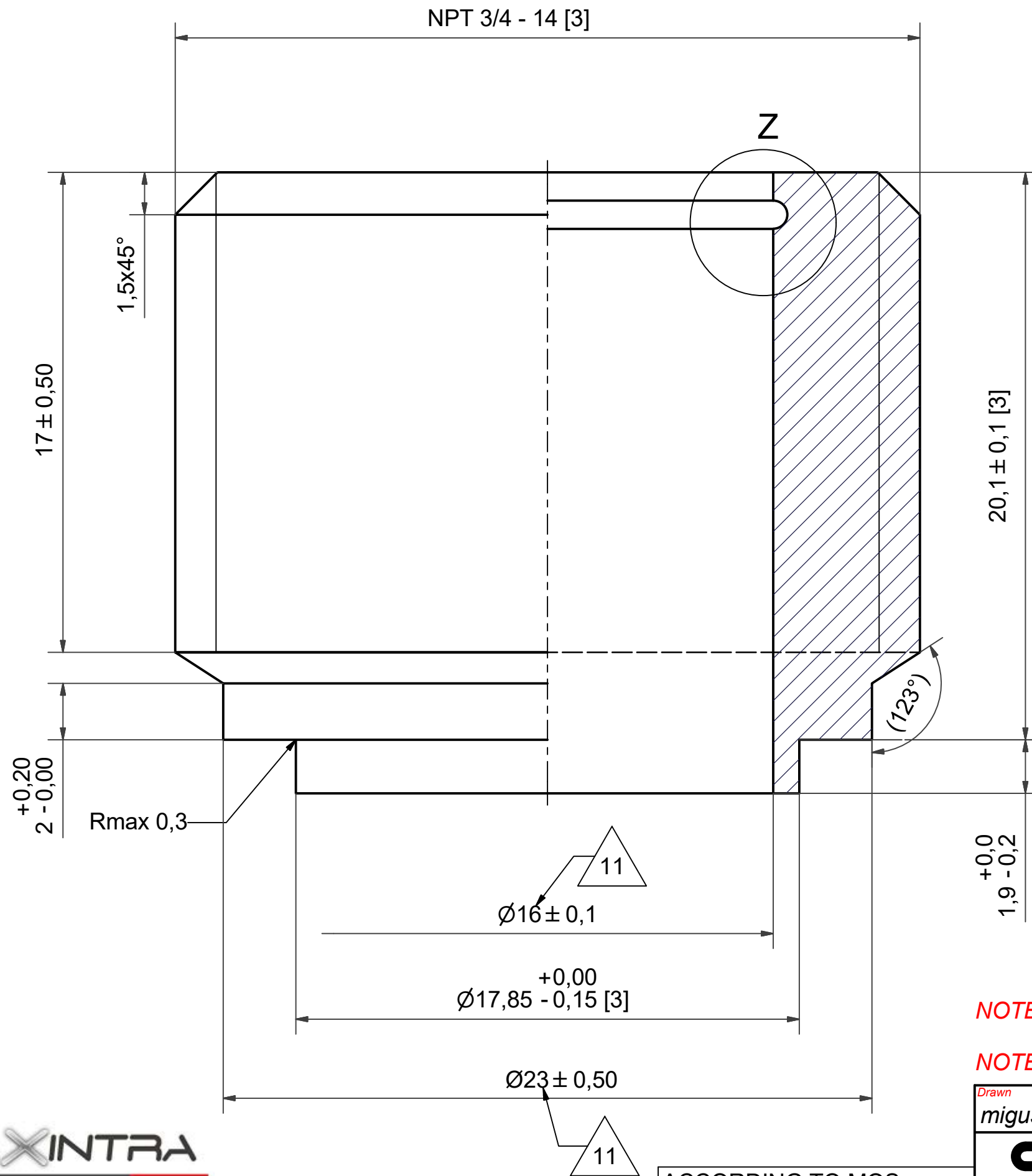


NOTE 2: [3] - CRITICAL/SPECIAL CHARACTERISTIC TO BE FOLLOWED
NOTE 1: DEBURR SHARP EDGES; MAX 0.4

ACCORDING TO MQS
MATERIAL

Drawn	Checked	Approved	Created Date	General geometrical tolerancing ISO 2768:	General surface finish R_a :	Scale	Paper size	
miguser	EG	VP	1990-09-08	m	3.2	-	A3	
			SOLDER 22U					
Article number		Design Type		Drawing number		Revision		Sheet
		CD		CD000094		13		1 (1)

Rev No	Alteration	Date	Checked	Approved
11	DESIGN CHANGE ACCORDING RD101105	2014-06-24	SKMTB	VP



ONLY FOR IDENTIFICATION

NOTE 2: [3] - CRITICAL / SPECIAL CHARACTERISTIC TO BE FOLLOWED

NOTE 1: DEBURR SHARP EDGES; MAX 0,4

© Company Confidential, Property of SWEP International AB

AXINTRA
ÉCHANGEURS THERMIQUES

ACCORDING TO MQS
MATERIAL

Drawn miguser	Checked TP	Approved VP	Created Date 1989-11-06	General geometrical tolerancing ISO 2768: m	General surface finish R_a : 3.2		Scale -	Paper size A3
			Title NPT 3/4- 14					
			Article number CD	Design Type CD	Drawing number CD000076	Revision 11	Sheet 1 (1)	