

B320LT

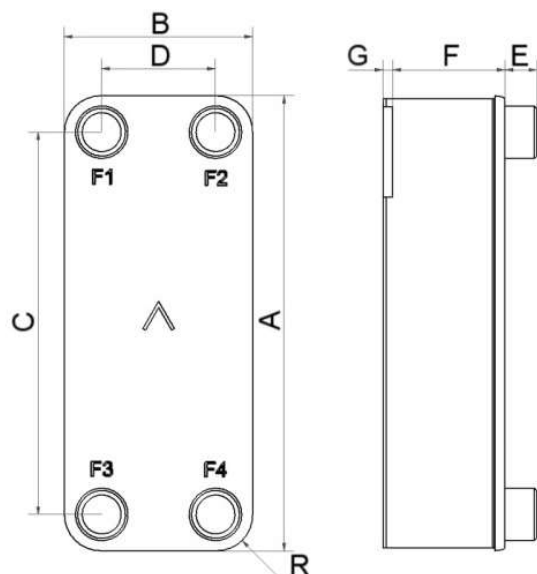
Le nouveau modèle B320LT offre des solutions efficaces pour de nombreuses applications exigeantes, comme le chauffage collectif, les refroidisseurs d'huile et différentes applications industrielles. Ce produit fait partie de la nouvelle gamme SWEP avec une capacité plus élevée. Il permet une longueur thermique flexible via l'optimisation de la disposition des plaques. Il fournit une excellente intégration de l'application, combinant efficacité thermique élevée et élargissement de ses capacités.



Spécifications de base

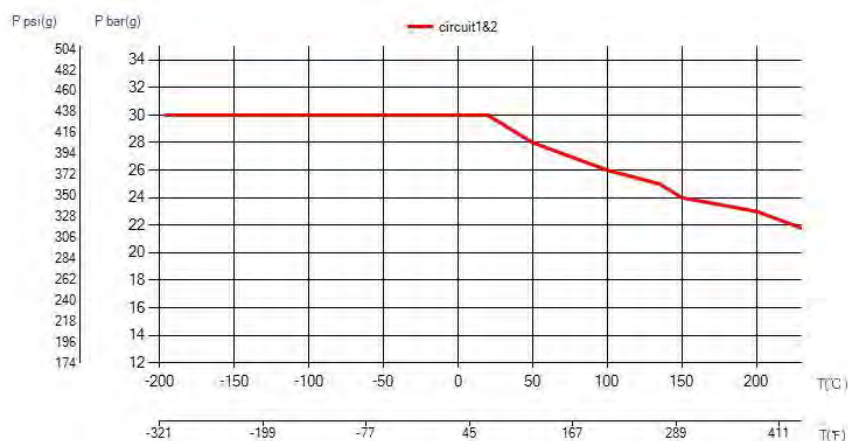
Nombre de plaques max. (NoP)	260
Débit volumétrique max.	76,2 m ³ /h (8.81 gpm)
Volume du canal	0.26/0.26 dm ³ (0.0092/0.0092 ft ³)
Matières	Plaques en acier inoxydable 316, brasage cuivre
Poids sans les connexions	9.43+(0.432*NoP) kg 20.80+(0.952*NoP) lb

Les dimensions standard



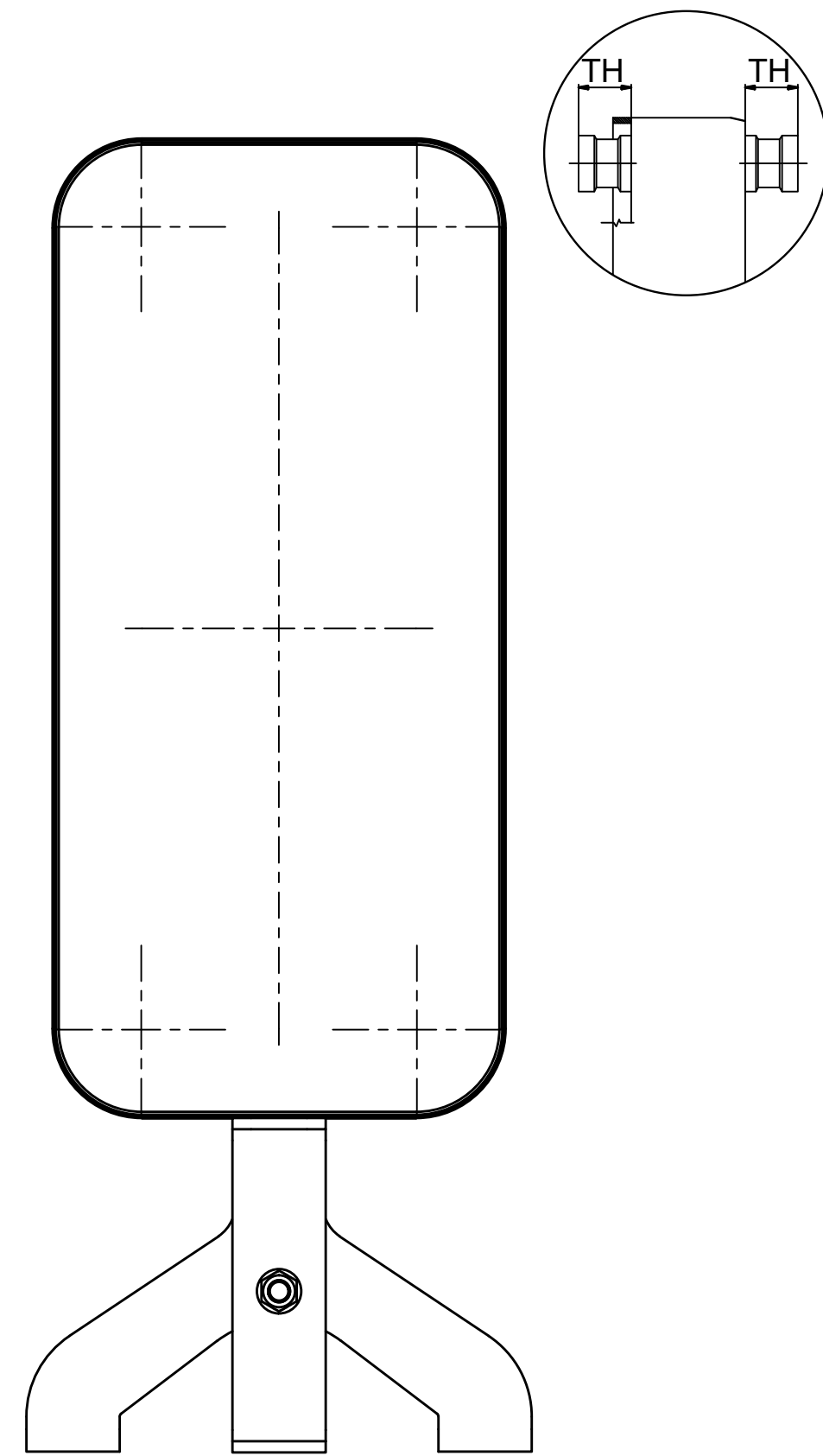
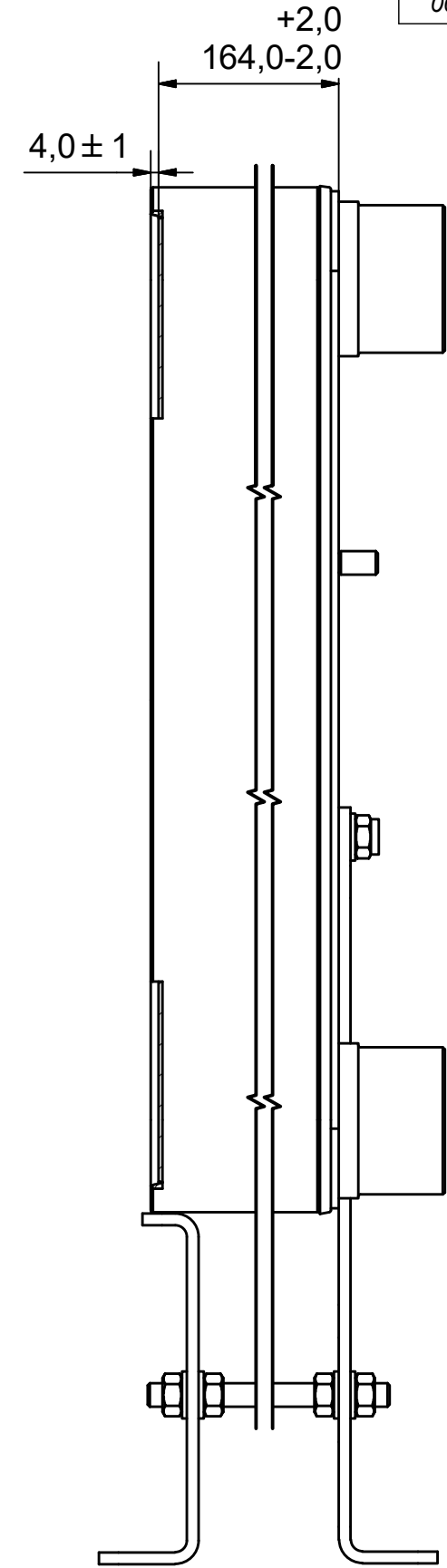
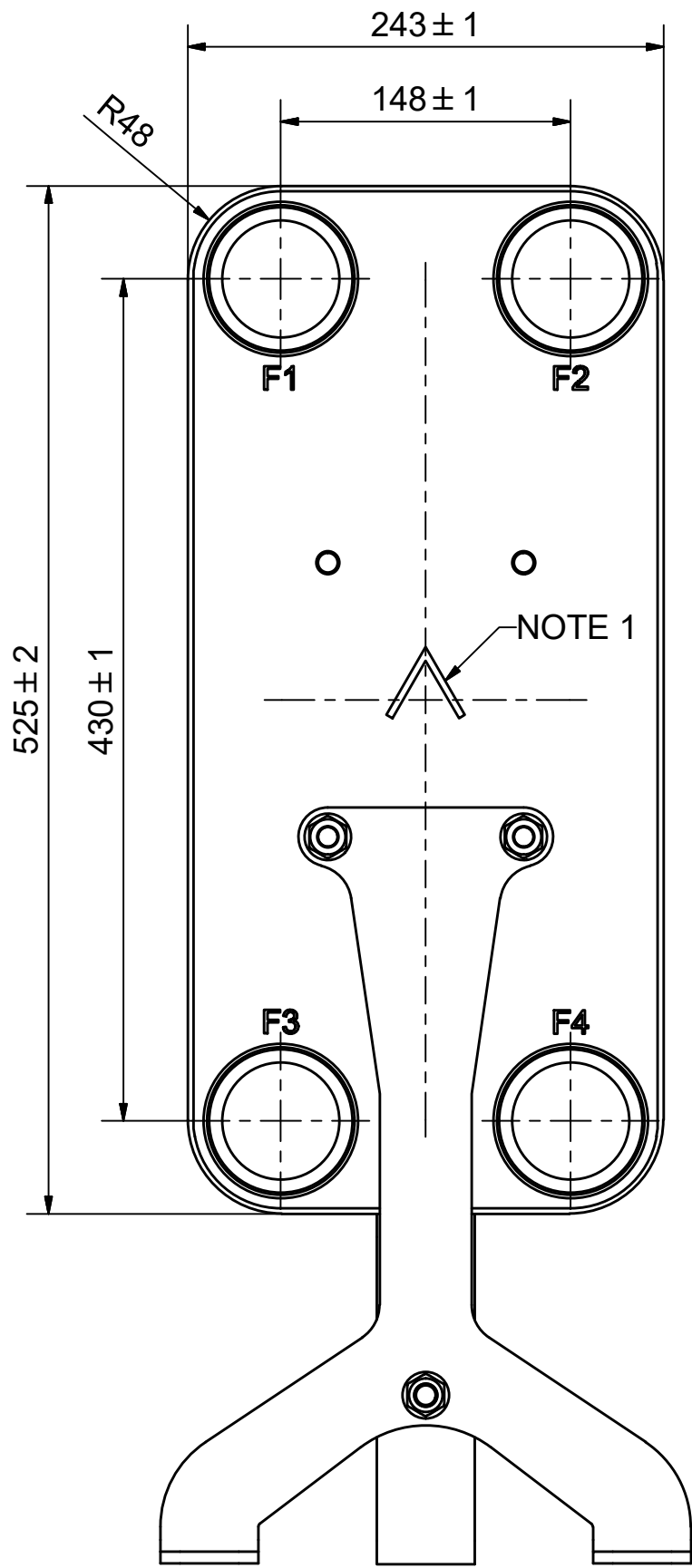
#	MM	IN
A	525	20.67
B	243	9.57
C	430	16.93
D	148	5.83
F	10.00+2.57*(NoP)	0.39+0.1*(NoP)
G	4	0.16
R	48	1.89
E_1	54	2.13

PED pression / température

**AXINTRA**

ÉCHANGEURS THERMIQUES

Rev No	Alteration	Date	Checked
00			



NOTE 1 ALTERNATE MARKING: STICKER OR STAMP

F4	46090	ISO-G 2 1/2 , TH = 54.2	CD000288
F3	46090	ISO-G 2 1/2 , TH = 54.2	CD000288
F2	46090	ISO-G 2 1/2 , TH = 54.2	CD000288
F1	46090	ISO-G 2 1/2 , TH = 54.2	CD000288
F	28020	B120T/50/57 SUPPORT LEG	CG450025_2
F	21118	B120T/50 BOLT LOC F 4x C140x100	CG450024_1

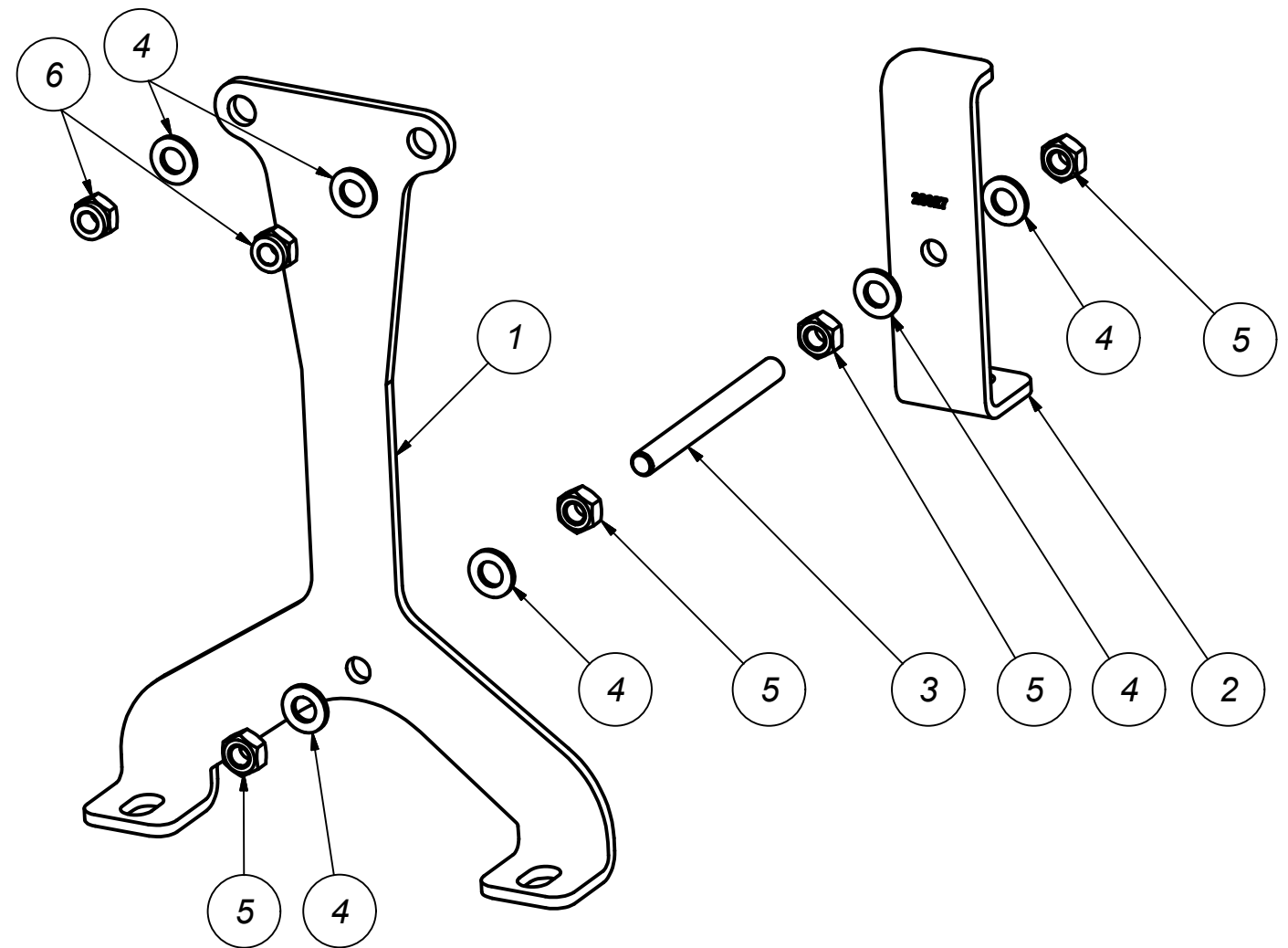
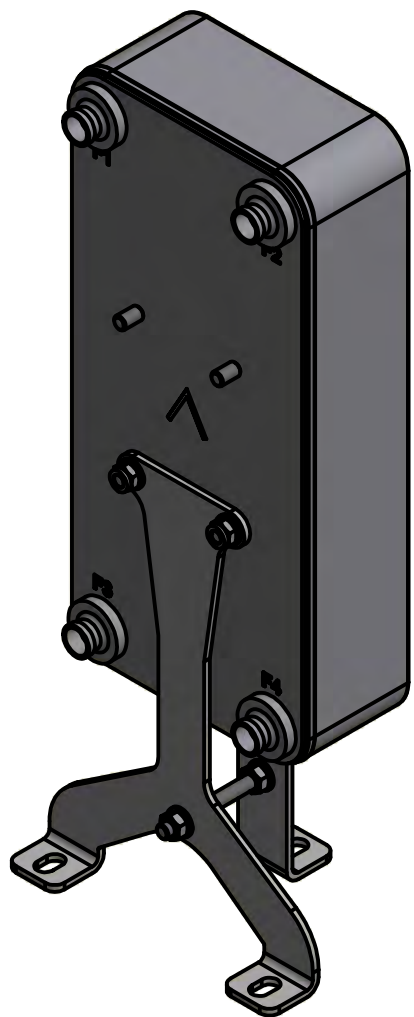
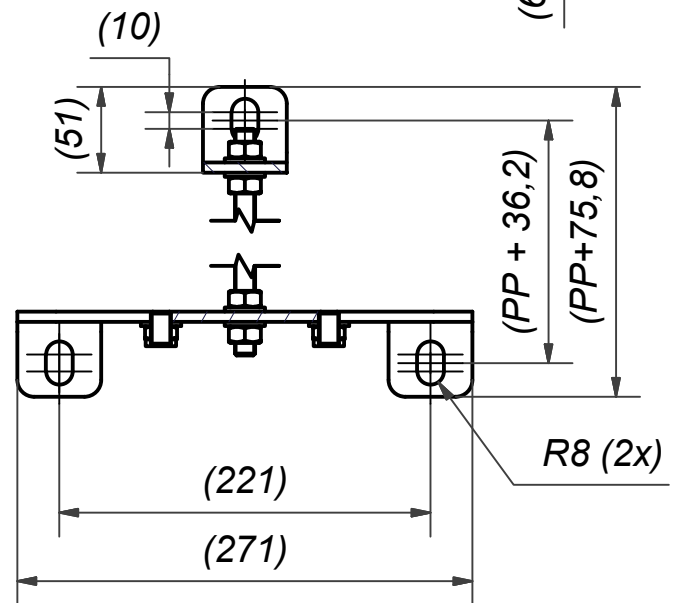
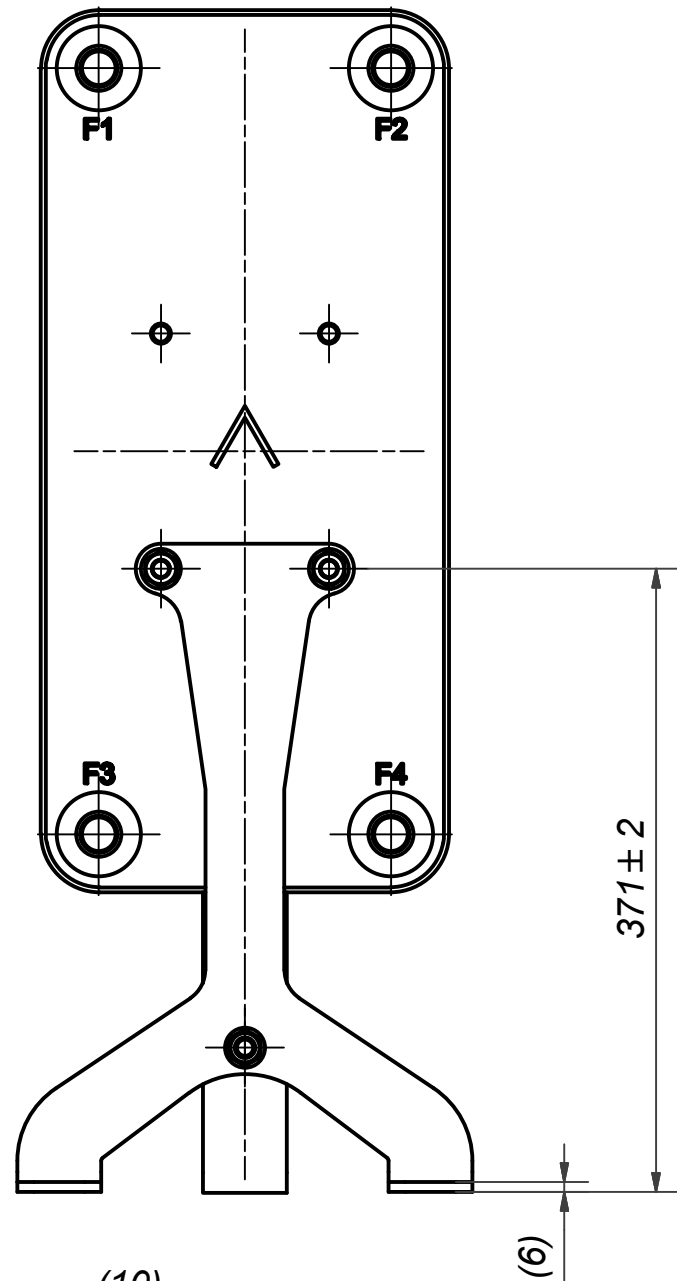


Title		Created Date		Created By	
B320LTL/1P-SC-S		27/2022		AU	
A DOVER COMPANY		Article/Configuration number		Drawing number	
		19125-060		AU00681801_19125-060	

Pos	Article No	Title / Denomination, code, material, dimension etc	Drawing No./ref	Pos	Article No	Title / Denomination, code, material, dimension etc	Drawing No./ref
-----	------------	---	-----------------	-----	------------	---	-----------------

© Company Confidential, Property of SWEP International AB

Rev No	Alteration	Date	Checked	Approved
06	Added NOTE 4 and size 220 to NOTE 1.	2019-05-17	SKDS	PDM

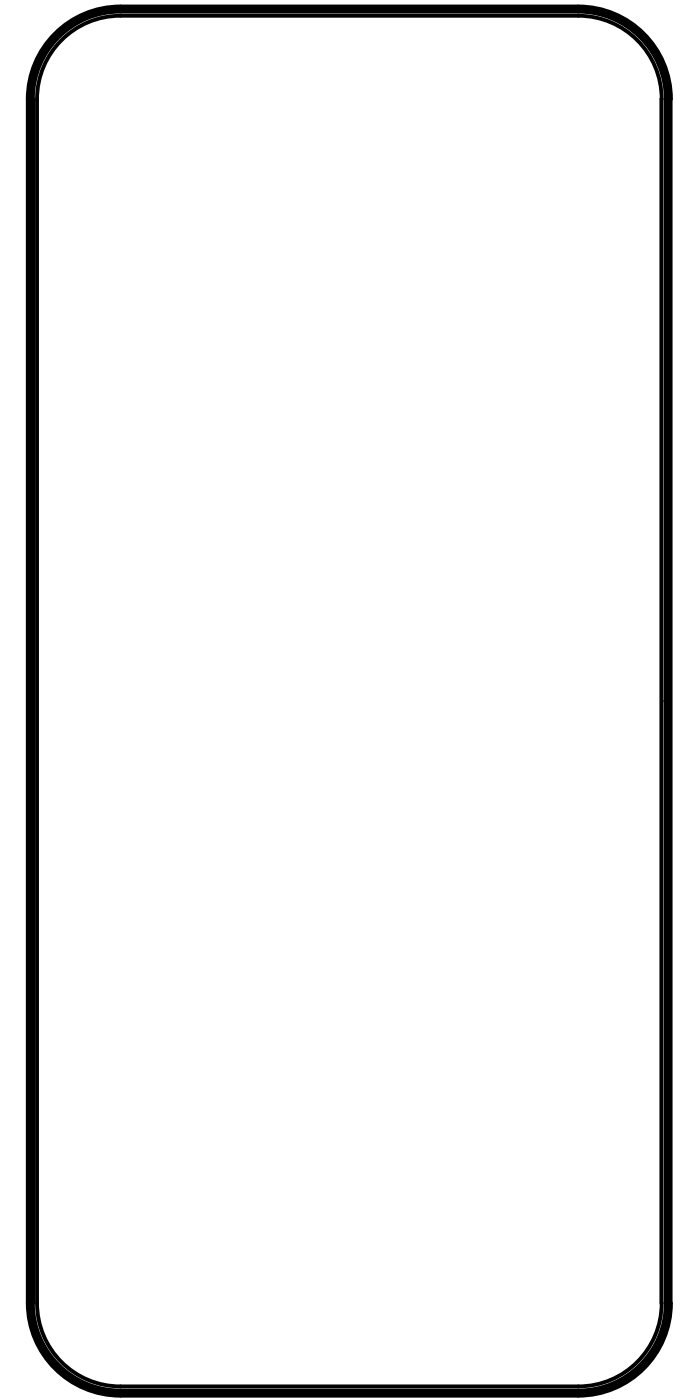
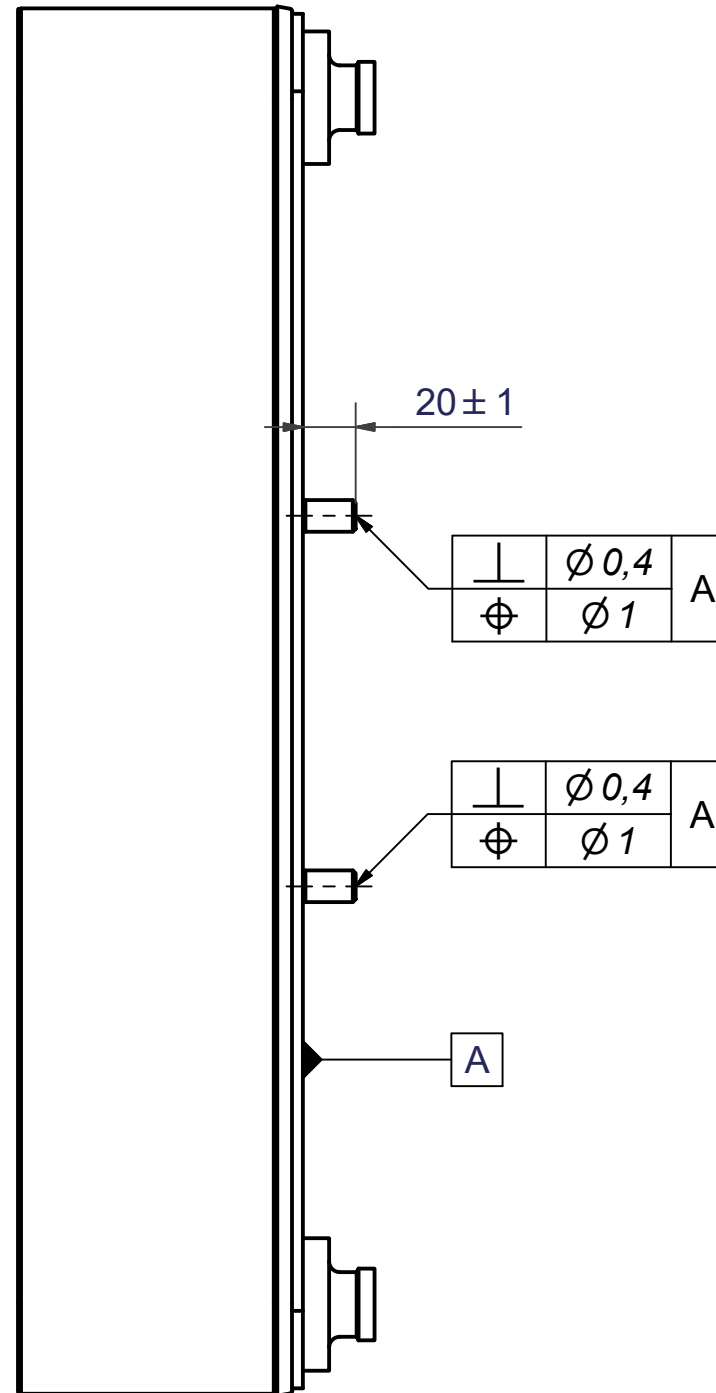
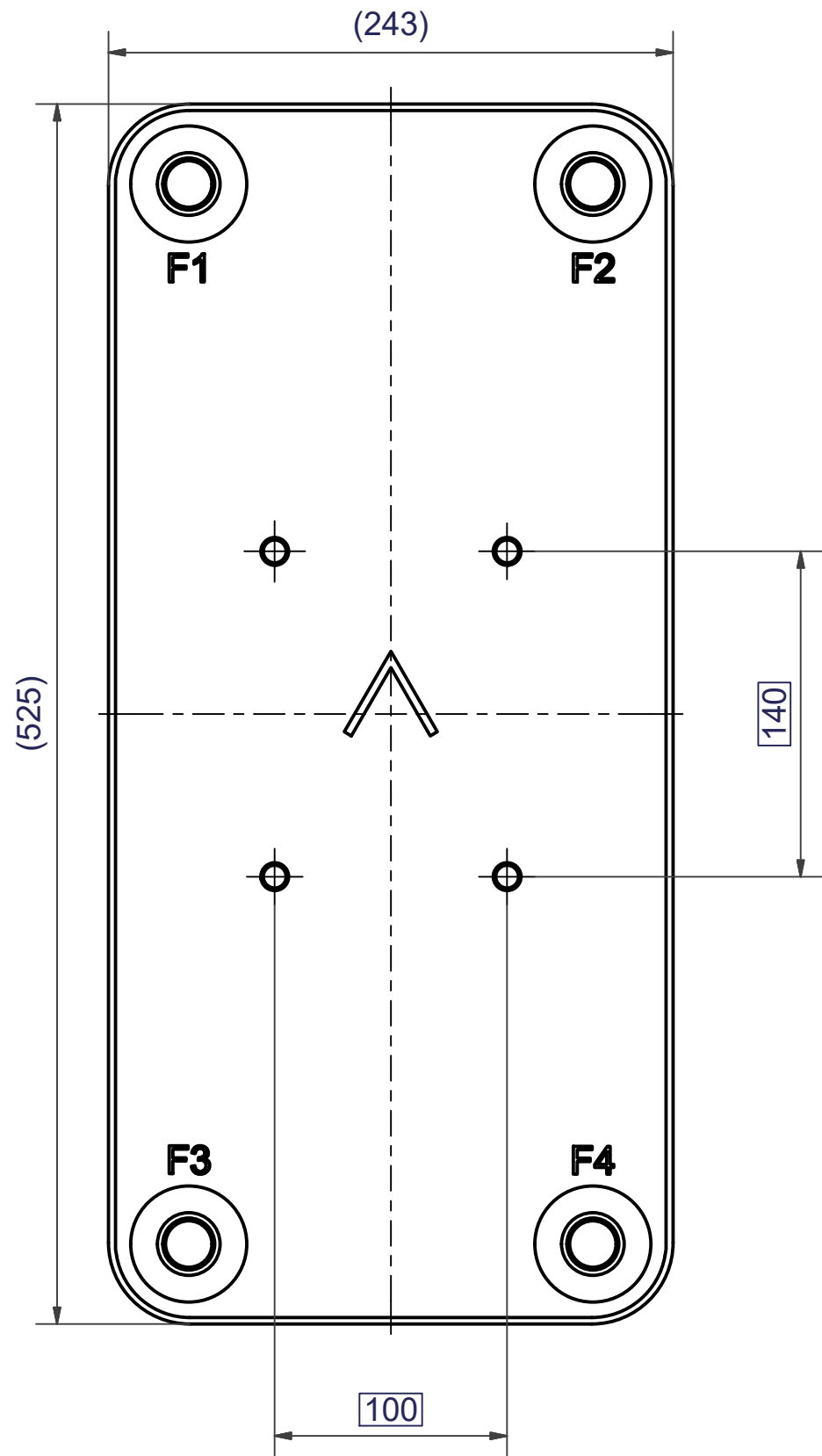


NOTE 4: For size 220 is required for connections to have diameter of MAX 65 mm.
 NOTE 3: Length of threaded bar according drawing CC000168.
 NOTE 2: For B57 with STD Conn. Stud bolt 21235 is required.
 NOTE 1: Requires stud bolt 21118, 21120, 24023 (B45, 50, 56, 200, 120T, 320LT, 320HT, 220)

ITEM	QTY	TITLE	Drawing No.
6	2	R-LOCKNUT M12 A2, 45523	DIN 985 - M12
5	4	NUT M12 M6M 8M FZB, 45889	DIN 934 - M12
4	6	WASHER ART. NO 45524	13x24x2.5
3	1	THREADED BAR M12	CC000168
2	1	B35/45/50/57 SUPPORT LEG. ART.NO.28027	CC000165
1	1	B45/50/57 SUPPORT LEG, ART.NO. 28029	CC000167

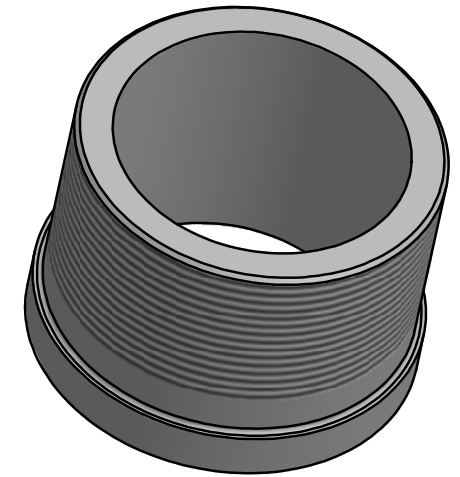
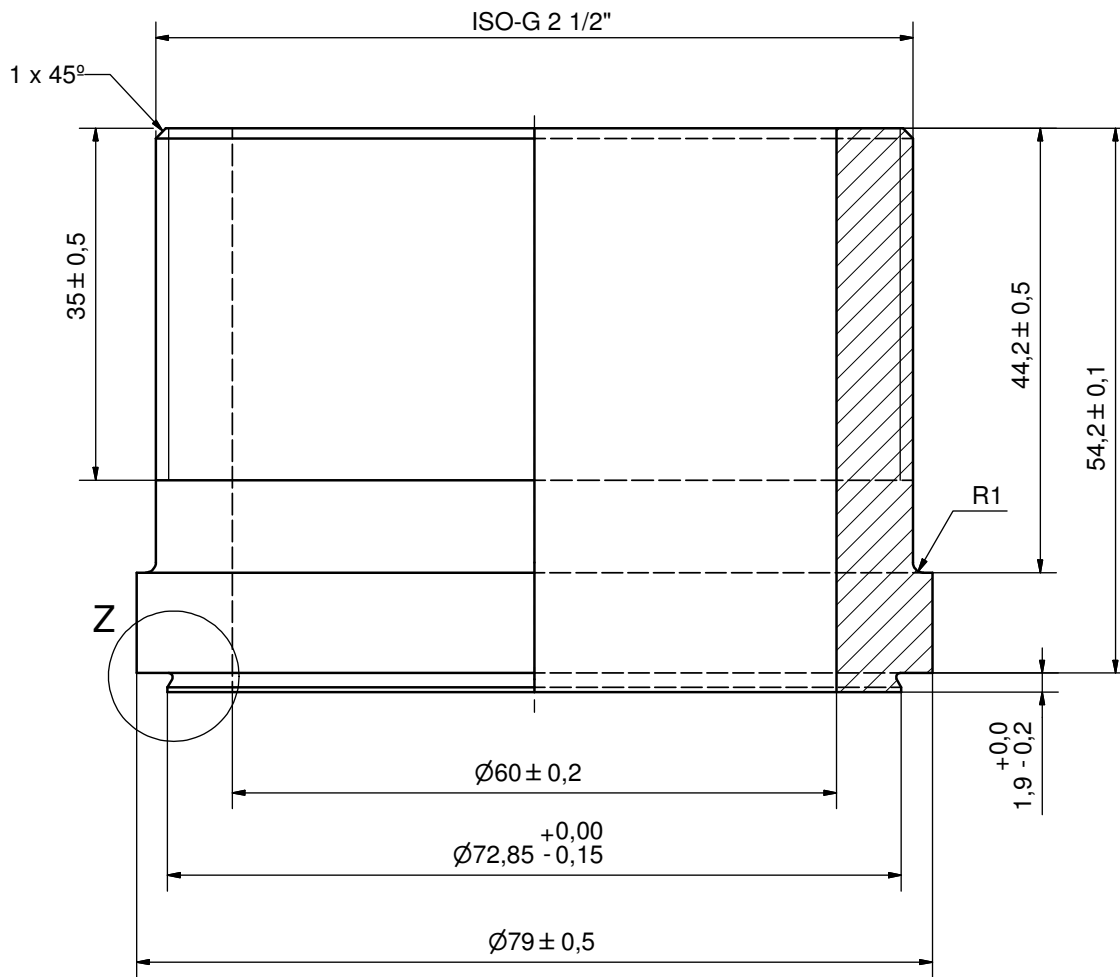
Drawn	Checked	Approved	Created Date	General geometrical tolerancing ISO 2768	General surface finish R_a	Scale	Paper size
lathe	PDM	PDM	2005-07-27			-	A3

SWEP		B120/50/57 SUPPORT LEG			
Article / Tool number	Design Type	Drawing number	Revision	Sheet	
A DOVER COMPANY	CG	CG450025	06	1 (1)	

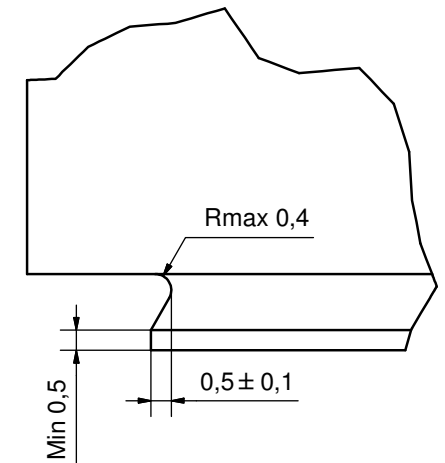


1	4	STUD BOLT M12x20 ART. NO. 45095	M12x20
IT	QTY	DESCRIPTION	Drawing No./Ref
lathe	PDM	PDM	2004-10-12
		General geometrical tolerancing ISO 2768: m	General surface finish R _a : 3.2
		B120T/50 BOLT LOC F 4x C140x100	
		Article number	Revision
		21118	00
		Drawing number	Sheet
		CG450024	1 (1)

Rev No.	Alteration	Date	Checked	Approved
4	ADDED DEBURR AND MATERIAL INFO	2009/08/06	RJ	PDM




Z (8 : 1)



DEBURR SHARP EDGES; MAX 0.4

ACCORDIN TO MQS

MATERIAL

Drawn	Checked	Approved	Created Date	General geometrical tolerancing ISO 2768	General surface finish Ra	Scale
EG	TOD	BOS	1997-02-17	m	3.2	-
			ISO-G 2 1/2			
Article number		Drawing number		Revision	Sheet	
-		CD000288		4	1 (1)	