

Single Support Leg

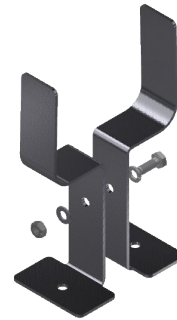
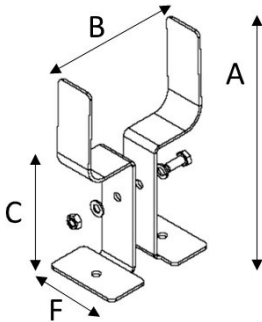
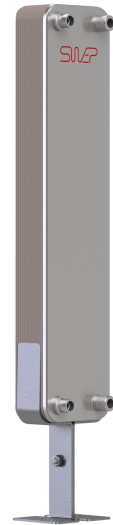
Article number: 1000739

For medium sized brazed plate heat exchanger models SWEP offer support legs that are mounted directly against the heat exchanger and does not require stud bolts. The heat exchanger is placed within the fork shaped bracket and is stabilized through friction. This support leg is also compatible with a SWEP refrigerant insulation.

Use this support leg when the plate pack of the heat exchanger is less then 120mm. For plate pack above 120mm, use article 1000740!

See "Compatible with Products" in the Basic Specifications list, to find what product is suitable with this support leg.

For mounting and installation guide, please go to:
<https://www.swep.net/support/downloads-certificates/instruction-manuals>



Basic Specifications

Material: CS

Max plates: 80

MinPlates: 20

Compatible with Product (-s): 12;16;25;26;80;85;86;10T;10TS;25T;28;80AS;80S;85S;85AS

A (mm):255

B (mm):122

C (mm):125

F (mm):80

AXINTRA

ÉCHANGEURS THERMIQUES