

# B220

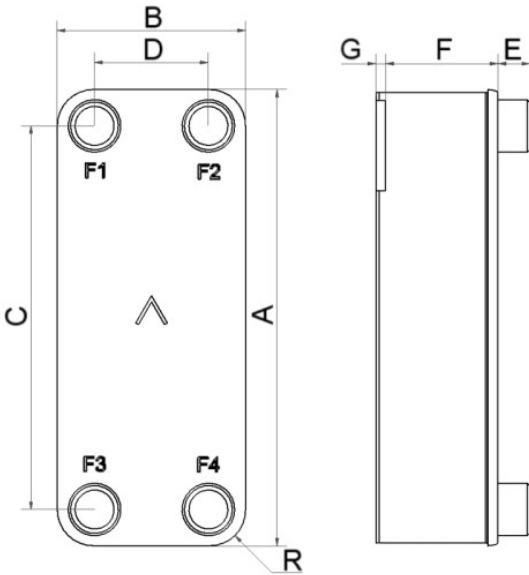
Le modèle B220 est un échangeur de chaleur à plaques brasées compact mais très efficace, offrant une excellente efficacité de transfert thermique à faible coût. L'une de ses principales applications est le chauffage haute efficacité de l'eau chaude sanitaire (ECS), mais on peut aussi l'utiliser dans d'autres applications à une phase telles que le refroidissement de l'huile, le chauffage domestique et les désurchauffeurs. Grâce à sa construction à deux types de plaques, on peut varier la longueur thermique pour obtenir un produit personnalisé aux performances optimales pour chaque application.



## Spécifications de base

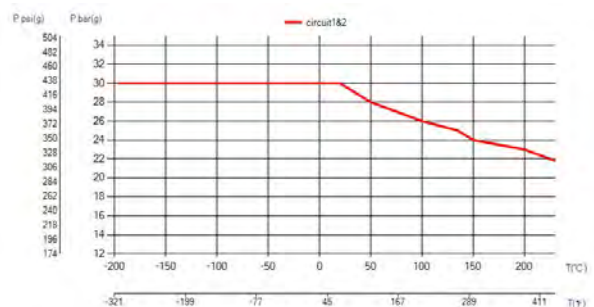
Nombre de plaques max. (NoP)	300
Débit volumétrique max.	39 m <sup>3</sup> /h (171.71 gpm)
Volume du canal	0.14/0.14 dm <sup>3</sup> (0.0049/0.0049 ft <sup>3</sup> )
Matières	Plaques en acier inoxydable 316/316L, brasage cuivre
Poids sans les connexions	5.30+(0.321*NoP) kg 11.68+(0.708*NoP) lb
Taille la taille des Particules (mm)	0,7

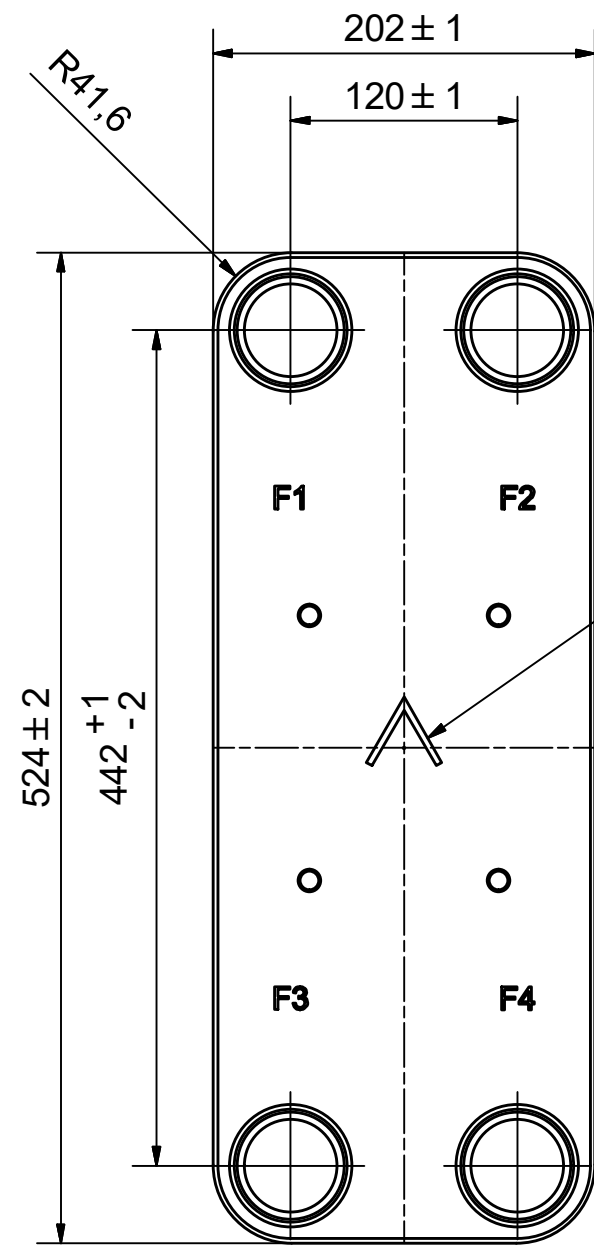
## Les dimensions standard



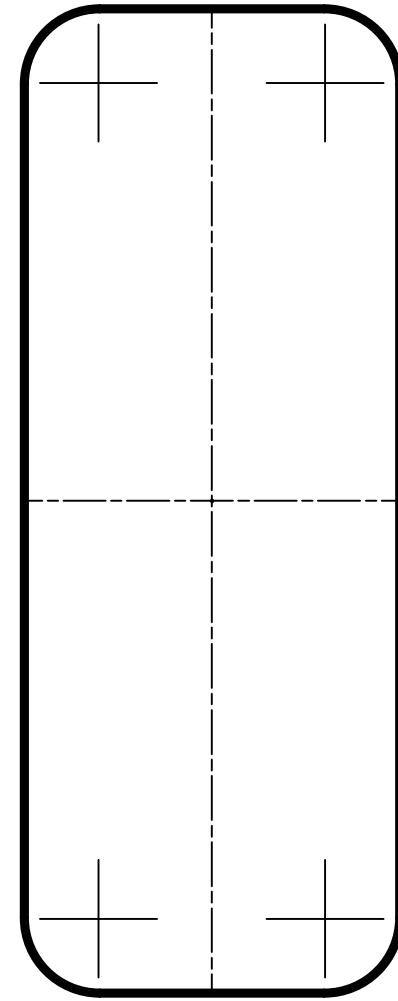
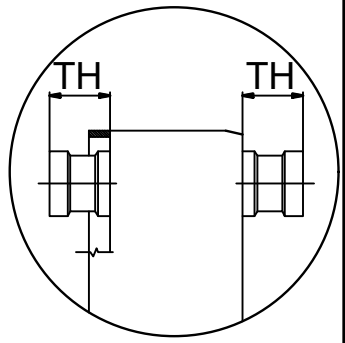
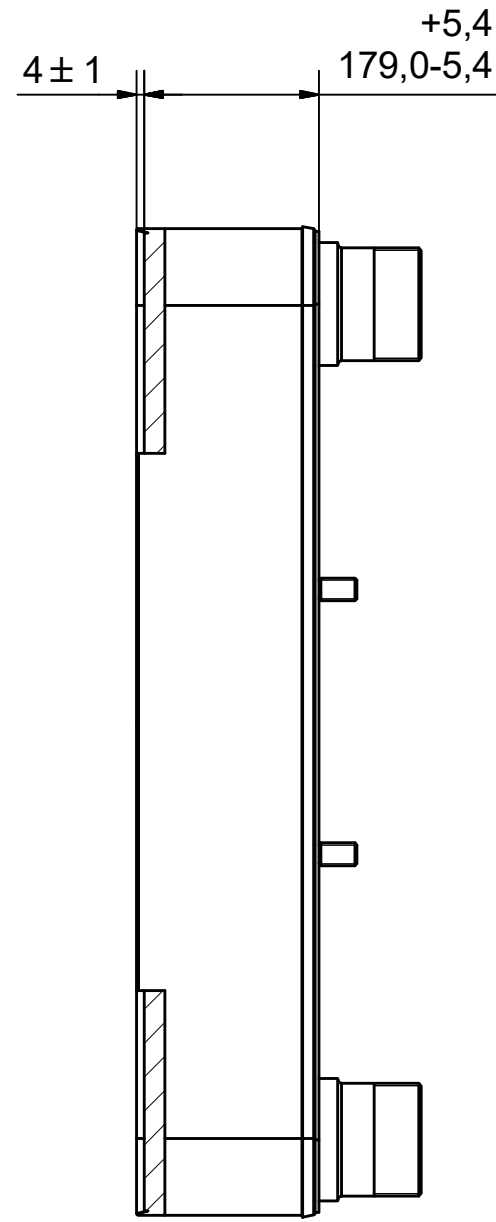
#	MM	IN
A	524	20.63
B	202	7.95
C	442	17.4
D	120	4.72
F	6,00+1,73*(NoP)	0.24+0.07*(NoP)
G	4	0.16
R	41.60	1.64
E_1	54	2.13
E_2	27	1.06
E_3	30	1.18

## PED pression / température





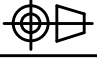
NOTE 1



NOTE 1: ALTERNATE MARKING: STICKER OR STAMP

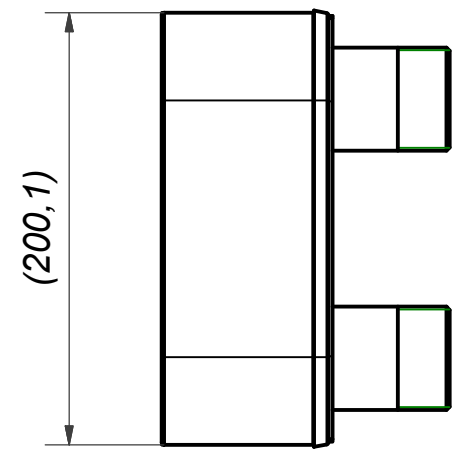
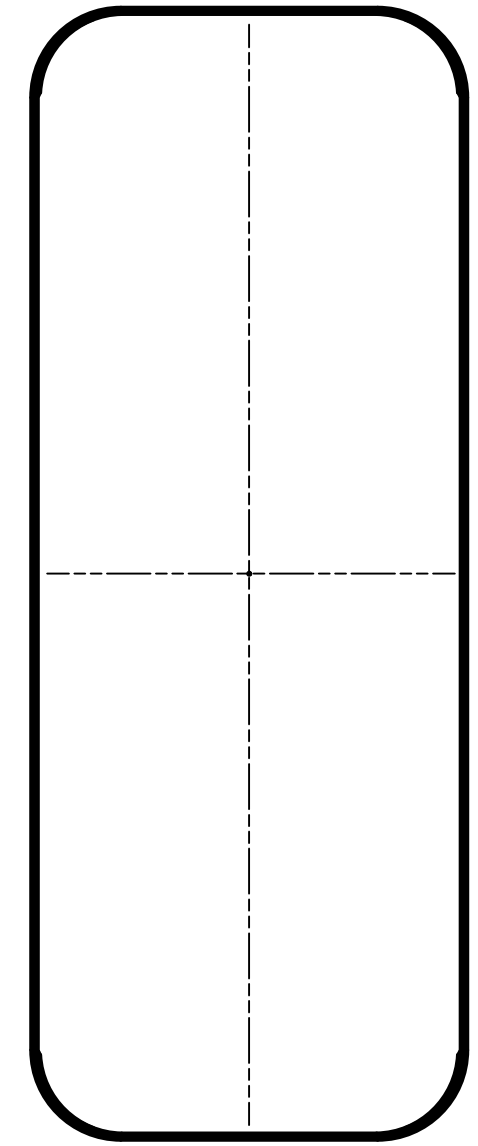
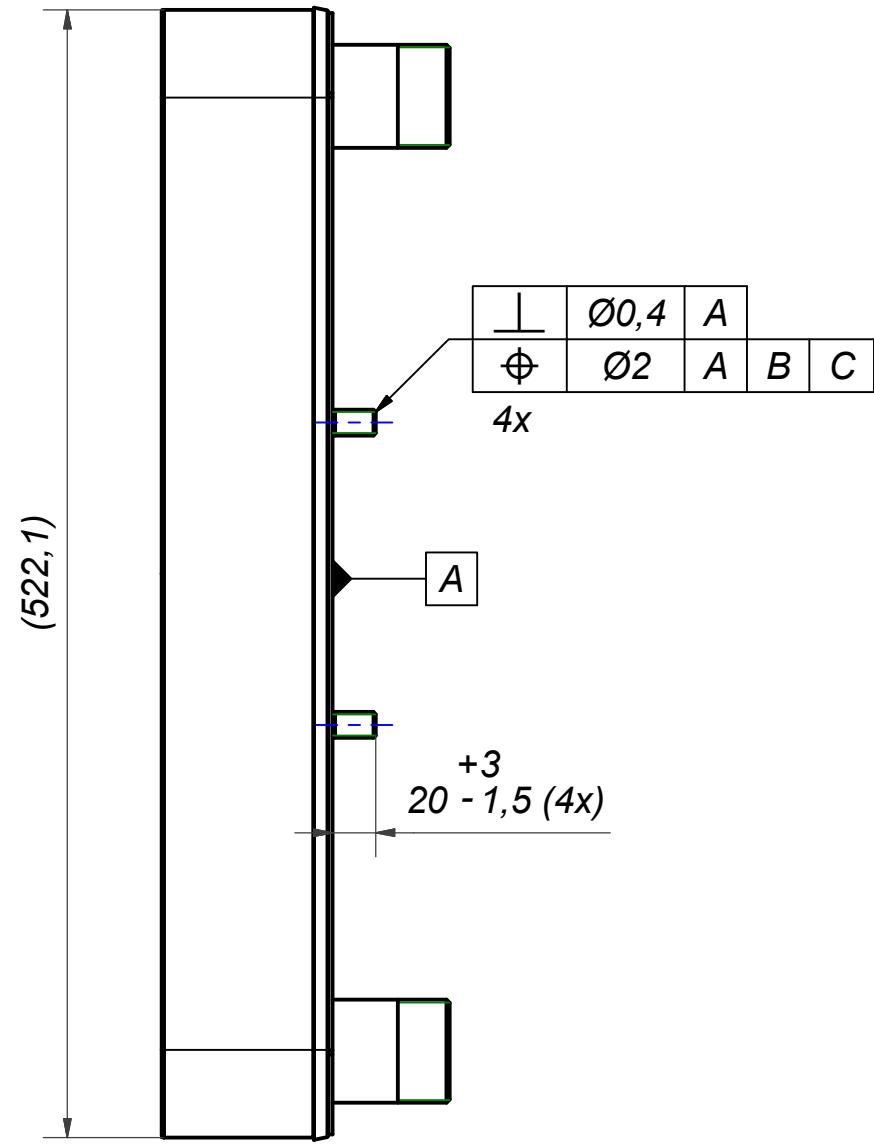
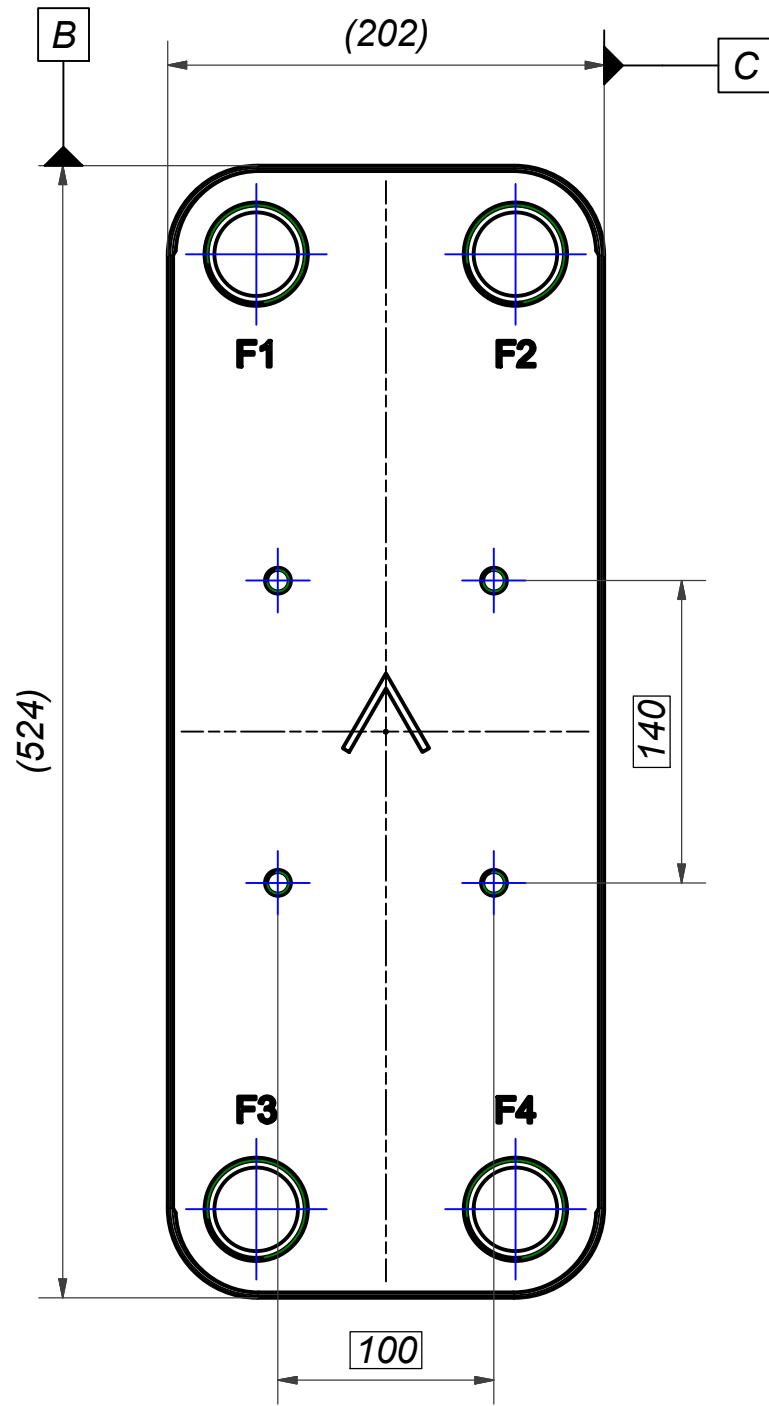
F4	46101	ISO-G 2 A, TH = 54,2	CD000322
F3	46101	ISO-G 2 A, TH = 54,2	CD000322
F2	46101	ISO-G 2 A, TH = 54,2	CD000322
F1	46101	ISO-G 2 A, TH = 54,2	CD000322
F	24023	220 STUD BOLT LOC. F 4x140x100	00045898_1
Pos	Article No	Title / Denomination, code, material, dimension etc	Drawing No./ref



Title <b>B220Lx100/1P-SC-S 4x2"</b>			
Created Date 2023-06-15		Created By AU	
Article/Configuration number 7000319		Drawing number AU00754058_7000319	
A DOVER COMPANY			


Pos	Article No	Title / Denomination, code, material, dimension etc	Drawing No./ref
-----	------------	---	-----------------

Rev No	Alteration	Date	Checked	Approved
02	Updated model.	2019-07-24	skds	PDM



© Company Confidential, Property of SWEP International AB

**AXINTRA**  
ÉCHANGEURS THERMIQUES

F	4	STUD BOLT M12 x 20, ART. NO. 45095				M12x20		
Item	QTY	Description				Drawing / Article		
Drawn	Checked	Approved	Created Date	General geometrical tolerancing ISO 2768:	General surface finish $R_a$ :	Scale	Paper size	
skds	PDM	PDM	2018-09-26			-	A3	
 A DOVER COMPANY						Title		
						220 STUD BOLT LOC. F 4x140x100		
Article number		Design Type	Drawing number	Revision	Sheet			
24023		CG	00045898	02	1 (1)			

Rev No	Alteration	Date	Checked	Approved
05	ECN-000223: update of thread designation + critical char	2022-02-18	10083926	PDM

1,5x45°

ISO-G 2 A [3]

05

25 ± 0,5

44,2 ± 0,1

54,2 ± 0,1 [3]

R2

Z

Rmax 0,4

Min 0,5

0,5 ± 0,1

Z

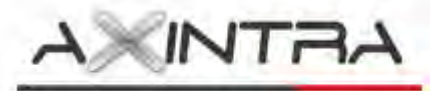
Ø49,2 -0,4

Ø57,85 -0,15 [3]

05

1,9 -0,2

Ø65 ± 0,5



ÉCHANGEURS THERMIQUES

ACCORDING TO MQS

MATERIAL

Drawn	Checked	Approved	Created Date	General geometrical tolerancing ISO 2768:	General surface finish $R_a$ :	Scale	Paper size
miguser	PDM	PDM	1997-02-17	m	3.2	-	A3



Title				
Article number	Design Type	Drawing number	Revision	Sheet
ISO-G 2 A				
	CD	CD000322	05	1 (1)

NOTE 2: [3] - CRITICAL/SPECIAL CHARACTERISTIC TO BE FOLLOWED

NOTE 1: DEBURR SHARP EDGES; MAX 0.4

© Company Confidential, Property of SWEPP International AB