

# B220

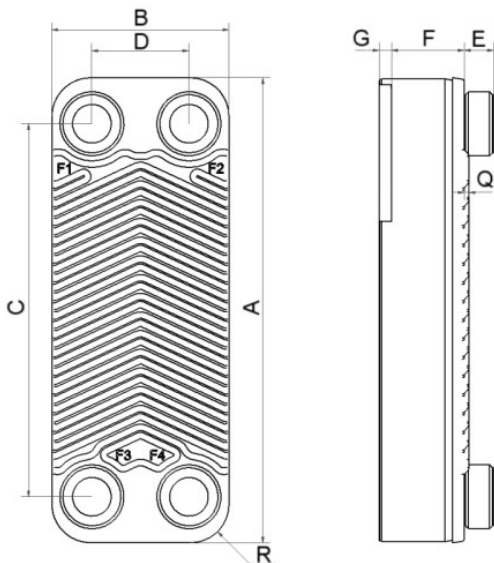
Le modèle B220 est un échangeur de chaleur à plaques brasées compact mais très efficace, offrant une excellente efficacité de transfert thermique à faible coût. L'une de ses principales applications est le chauffage haute efficacité de l'eau chaude sanitaire (ECS), mais on peut aussi l'utiliser dans d'autres applications à une phase telles que le refroidissement de l'huile, le chauffage domestique et les désurchauffeurs. Grâce à sa construction à deux types de plaques, on peut varier la longueur thermique pour obtenir un produit personnalisé aux performances optimales pour chaque application.



## Spécifications de base

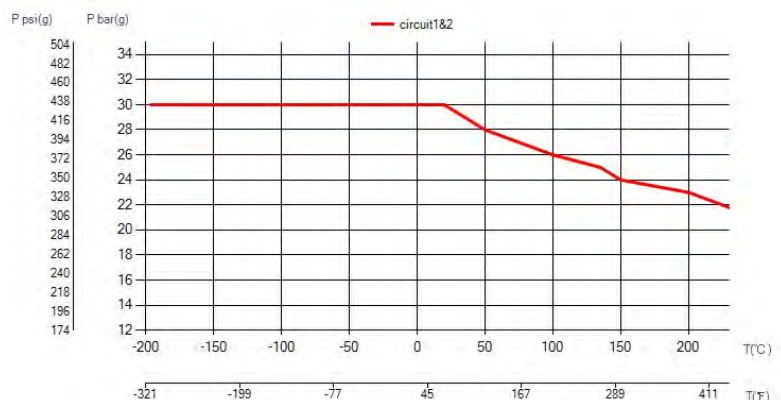
Nombre de plaques max. (NoP)	300
Débit volumétrique max.	39 m <sup>3</sup> /h (171.71 gpm)
Volume du canal	0.14/0.14 dm <sup>3</sup> (0.0049/0.0049 ft <sup>3</sup> )
Matières	Plaques en acier inoxydable 316/316L, brasage cuivre
Poids sans les connexions	5.30+(0.321*NoP) kg 11.68+(0.708*NoP) lb

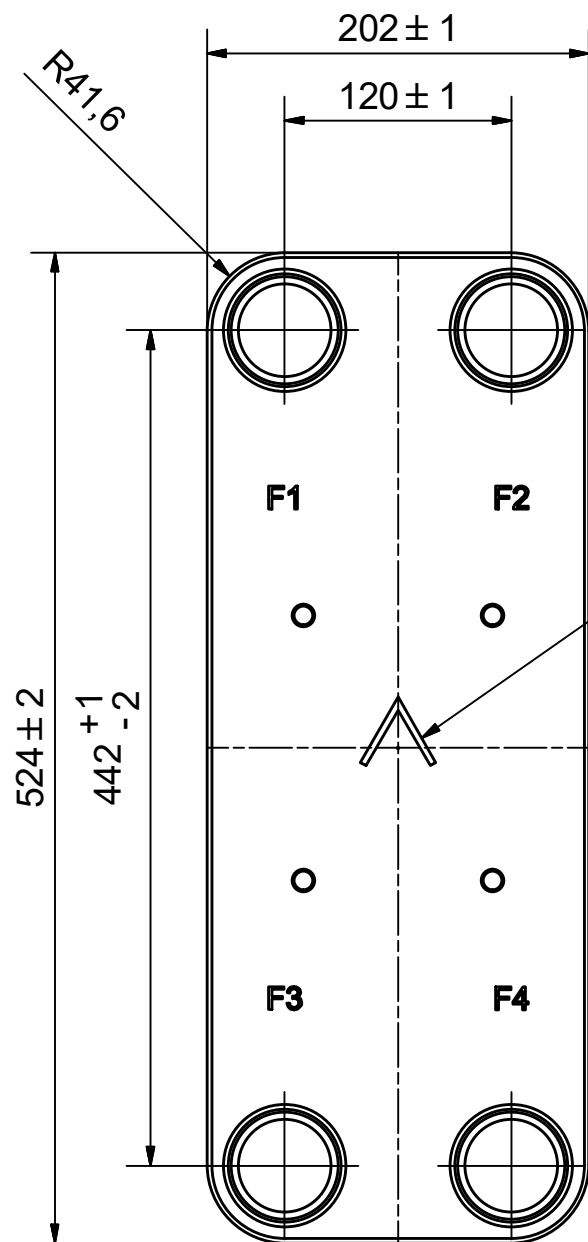
## Les dimensions standard



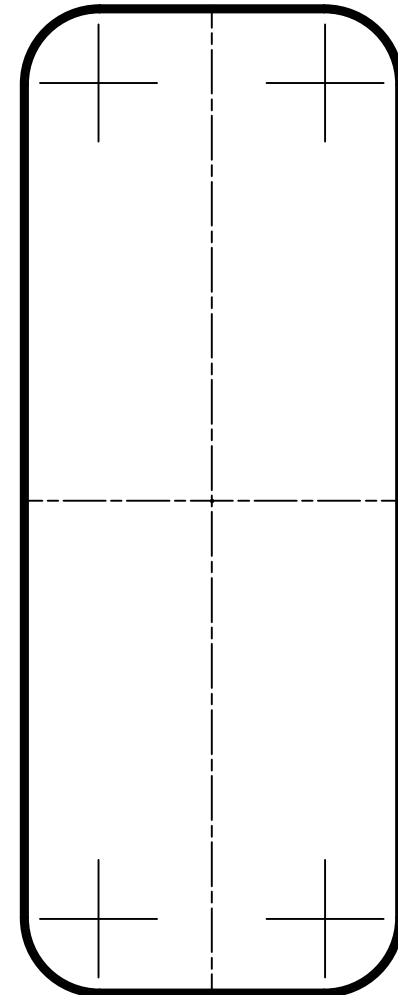
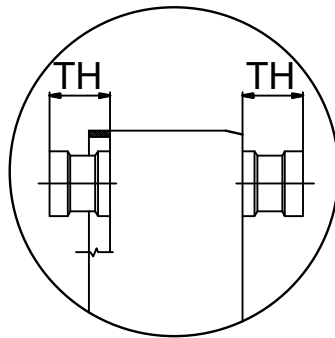
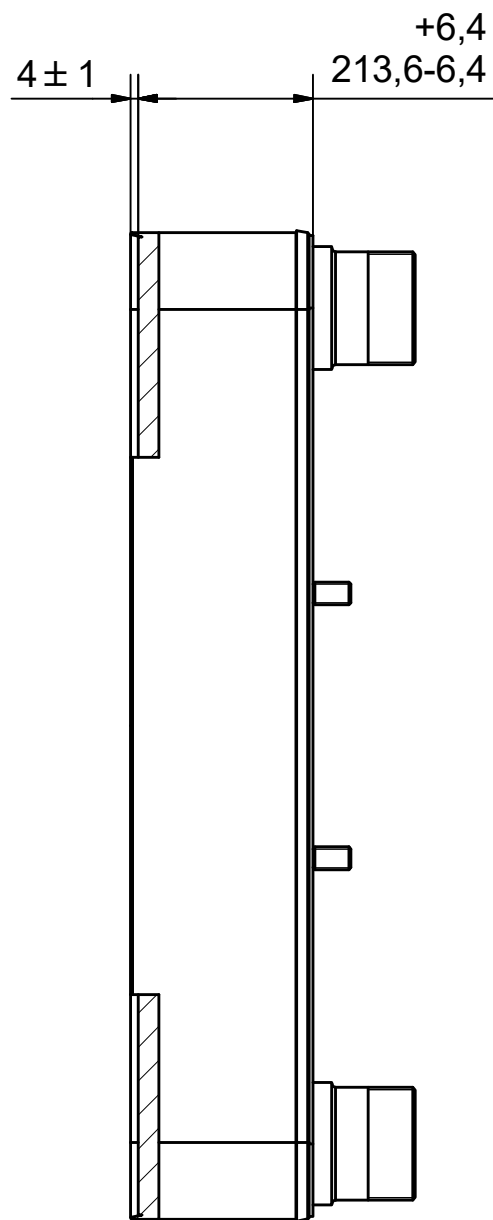
#	MM	IN
A	524	20.63
B	202	7.95
C	442	17.4
D	120	4.72
F	6,00+1,73*(NoP)	23.62+6.81*(NoP)
G	4	0.16
R	41.60	1.64
E_1	54	2.13

## PED pression / température







NOTE 1



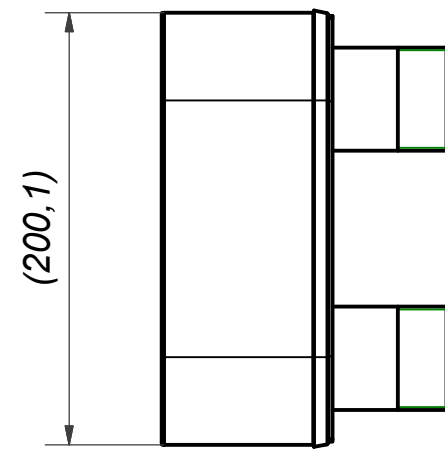
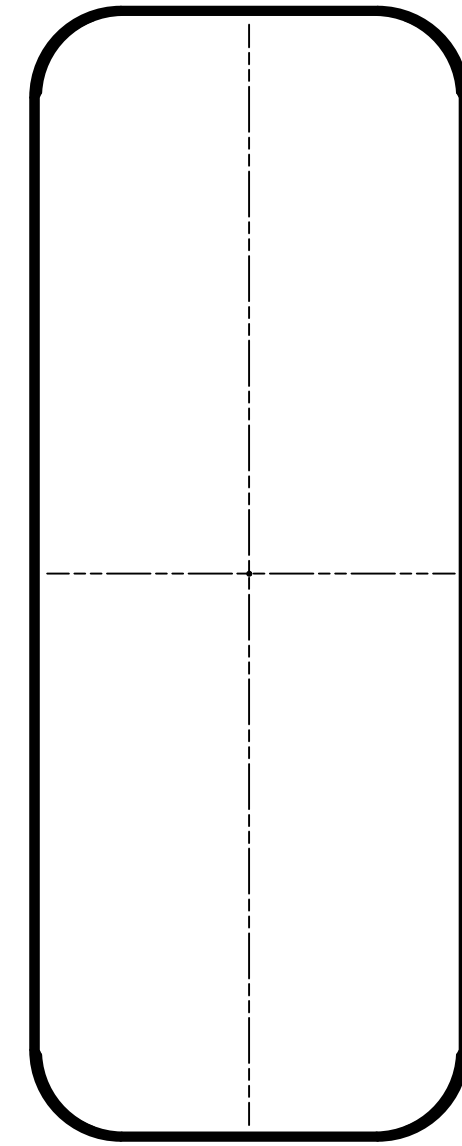
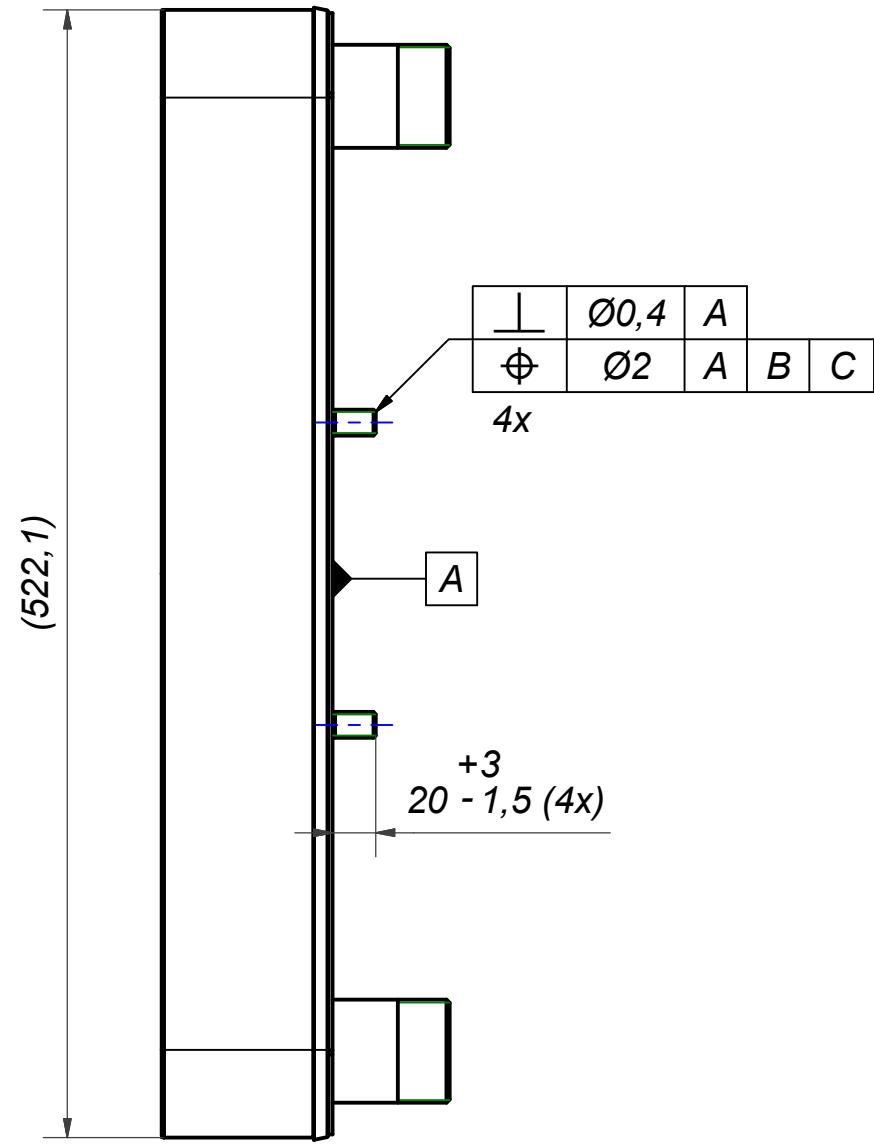
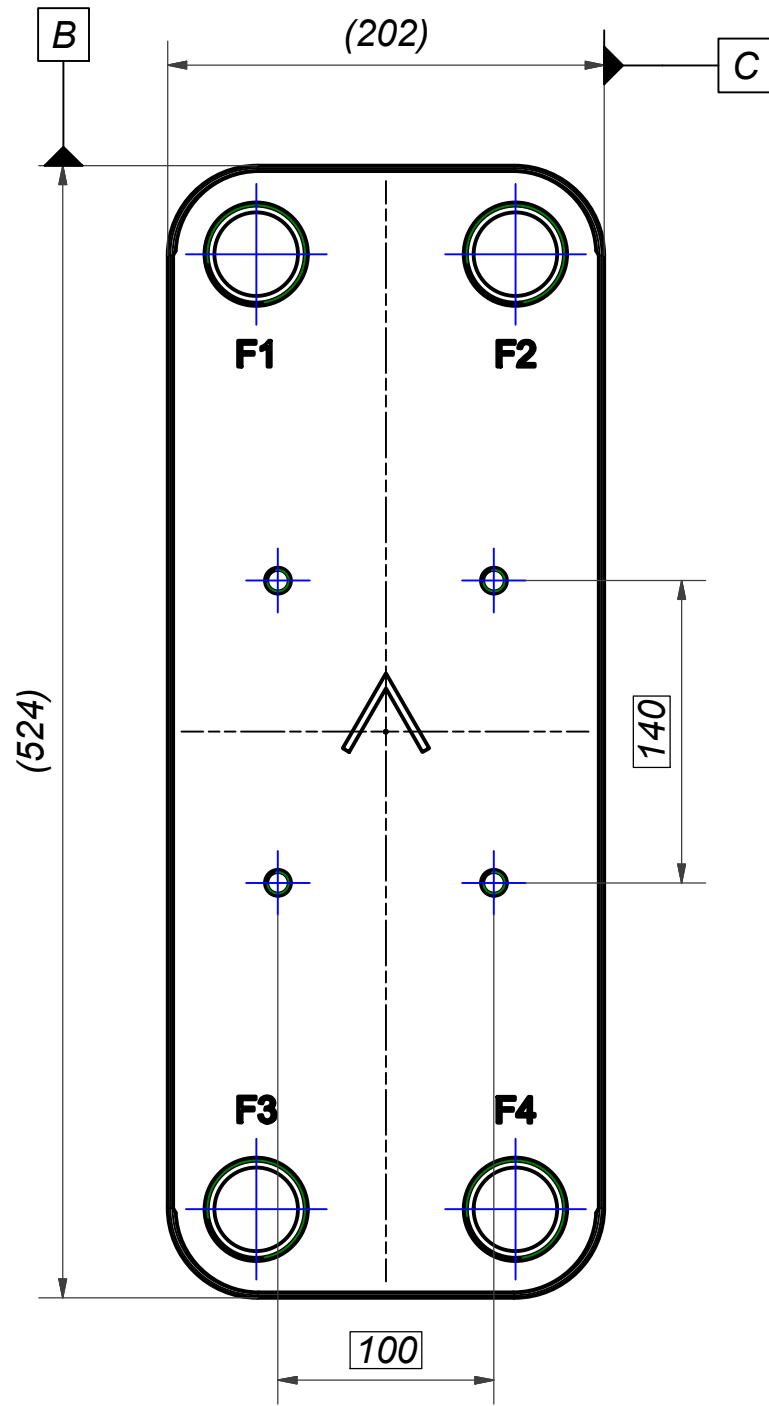
NOTE 1: ALTERNATE MARKING: STICKER OR STAMP

F4	46101	ISO-G 2 A, TH = 54,2	CD000322
F3	46101	ISO-G 2 A, TH = 54,2	CD000322
F2	46101	ISO-G 2 A, TH = 54,2	CD000322
F1	46101	ISO-G 2 A, TH = 54,2	CD000322
F	24023	220 STUD BOLT LOC. F 4x140x100	00045898_1

Pos	Article No	Title / Denomination, code, material, dimension etc	Drawing No./ref	Pos	Article No	Title / Denomination, code, material, dimension etc	Drawing No./ref
-----	------------	---	-----------------	-----	------------	---	-----------------

Title <b>B220Mx120/1P-SC-S 4x2"</b>			
 A DOVER COMPANY	Created Date 2024-05-24	Created By AU	
	Article/Configuration number 0272320.0	Drawing number AU00047363_0272320.0	

Rev No	Alteration	Date	Checked	Approved
02	Updated model.	2019-07-24	skds	PDM



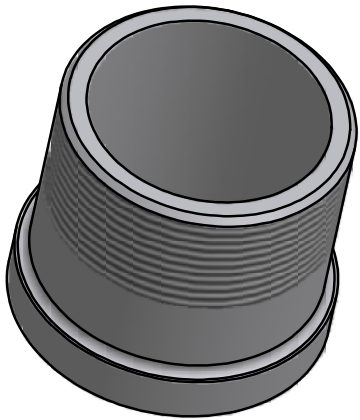
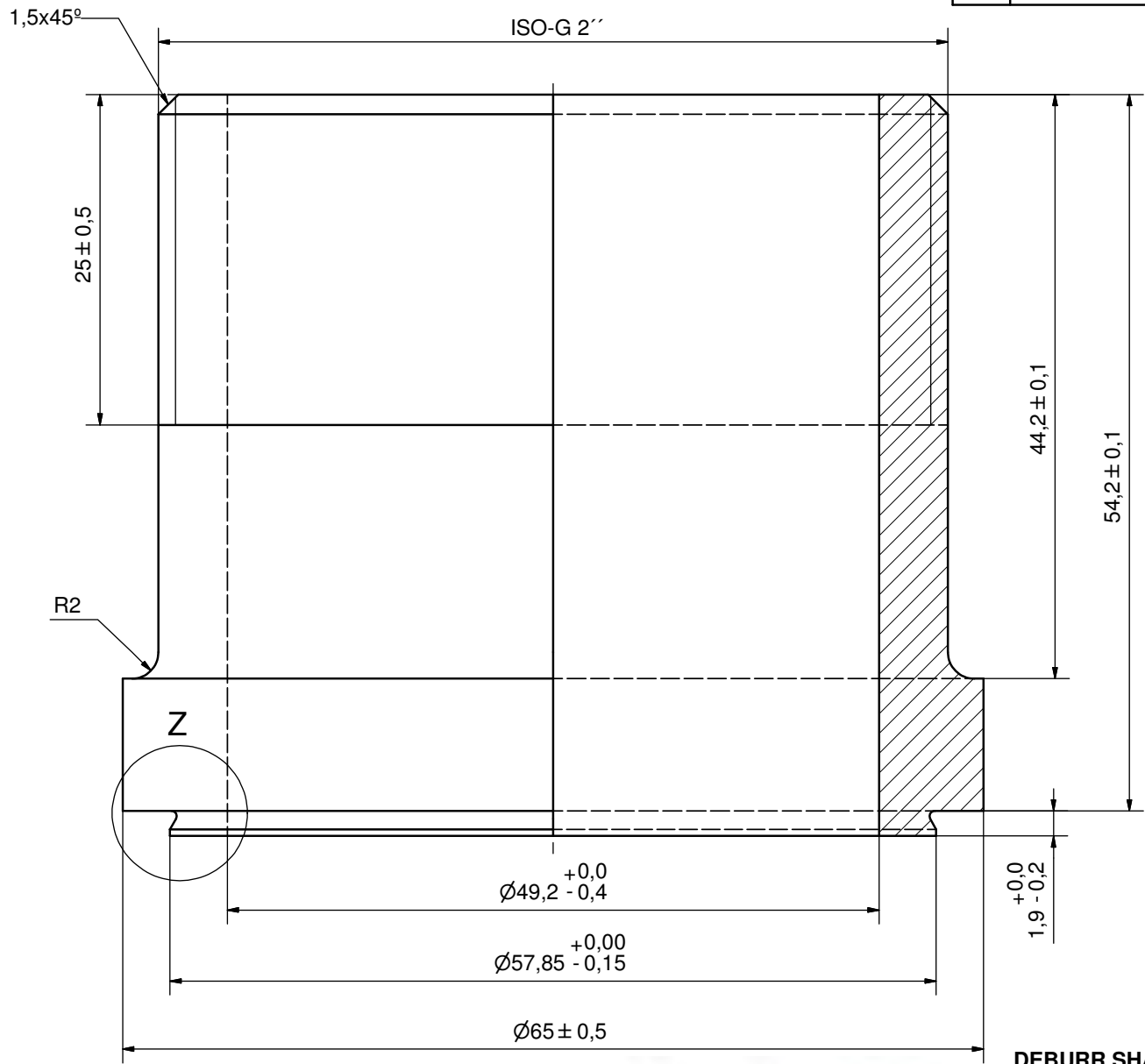
© Company Confidential, Property of SWEP International AB

**AXINTRA**  
ÉCHANGEURS THERMIQUES

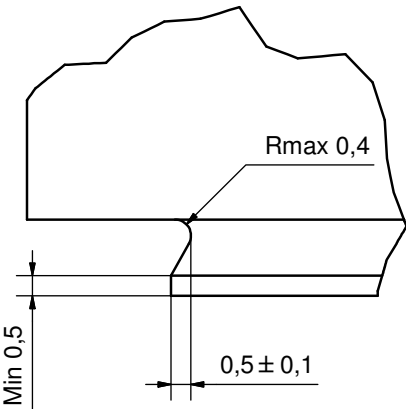
F	4	STUD BOLT M12 x 20, ART. NO. 45095				M12x20		
Item	QTY	Description				Drawing / Article		
Drawn	Checked	Approved	Created Date	General geometrical tolerancing ISO 2768:	General surface finish $R_a$ :	Scale	Paper size	
skds	PDM	PDM	2018-09-26			-	A3	
		Title						
		220 STUD BOLT LOC. F 4x140x100						
		Article number	Design Type	Drawing number	Revision	Sheet		
		24023	CG	00045898	02	1 (1)		

**SWEP**  
A DOVER COMPANY

Rev No.	Alteration	Date	Checked	Approved
4	ADDED DEBURR & MATERIAL INFO	2009/07/22	AP	PDM



Z (8 : 1)



DEBURR SHARP EDGES; MAX 0,4

ACCORDING TO MQS  
MATERIAL



Drawn	Checked	Approved	Created Date	General geometrical tolerancing ISO 2768	General surface finish $R_a$	Scale
RJ	EG	BOS	1997-02-17	m	3.2	3:1
Title				ISO-G 2" A		
Article number		Drawing number		Revision	Sheet	
-		CD000322		4	1 (1)	

