

B250AS

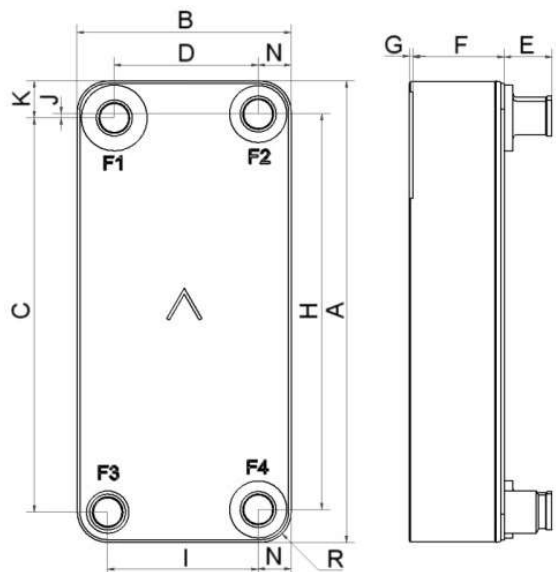
Notre modèle B250AS est un condenseur à haut rendement spécialement développé pour les pompes à chaleur et les chillers (refroidis à l'eau). Ses ports de grande taille et l'asymétrie de ses plaques permettent de développer une gamme opérationnelle de 80 à 250 kW. La conception de nos plaques AsyMatrix® améliore les échanges de chaleur, réduit les pertes de charges et la charge du réfrigérant.



Spécifications de base

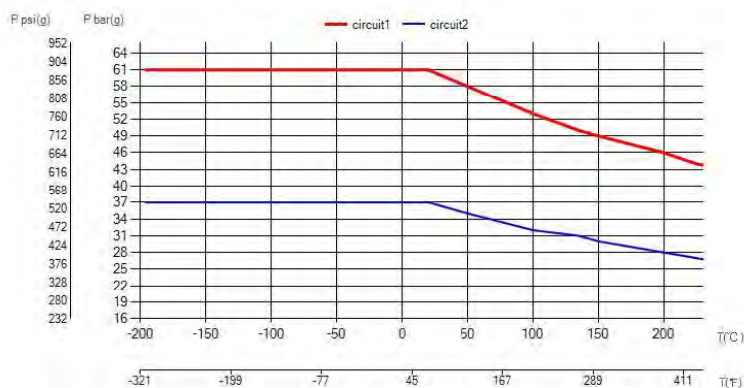
Nombre de plaques max. (NoP)	300
Débit volumétrique max.	62 m³/h (272.98 gpm)
Volume du canal	0.172/0.202 dm³ (0.0061/0.0071 ft³)
Matières	Plaques en acier inoxydable 304, brasage cuivre
Poids sans les connexions	8.40+(0.337*NoP) kg 18.52+(0.743*NoP) lb

Les dimensions standard

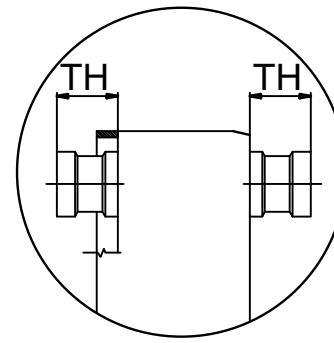
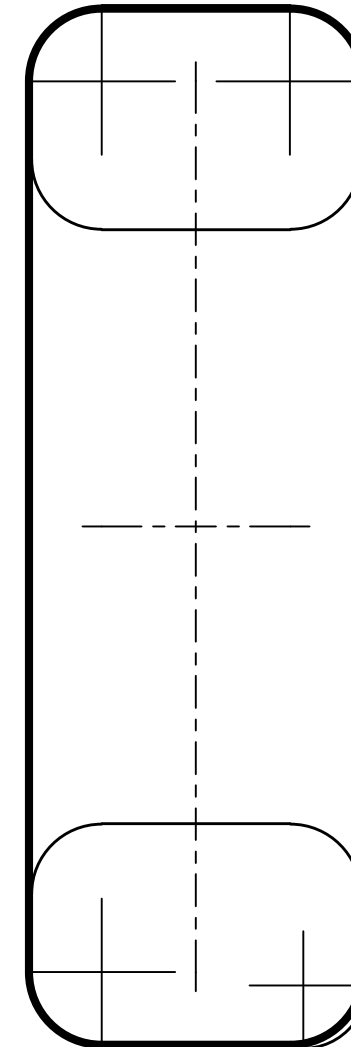
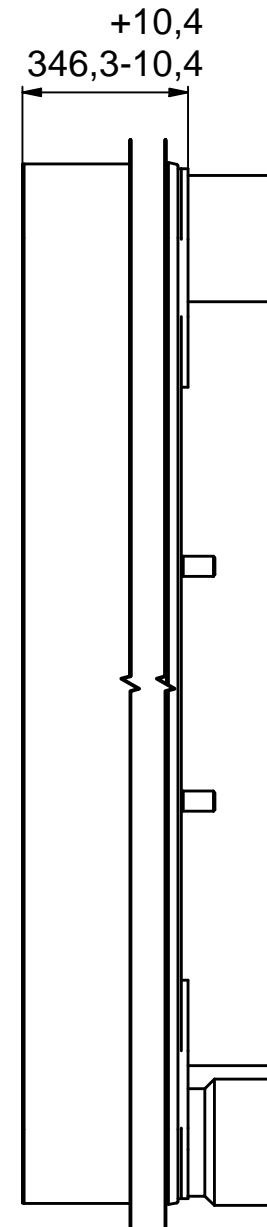
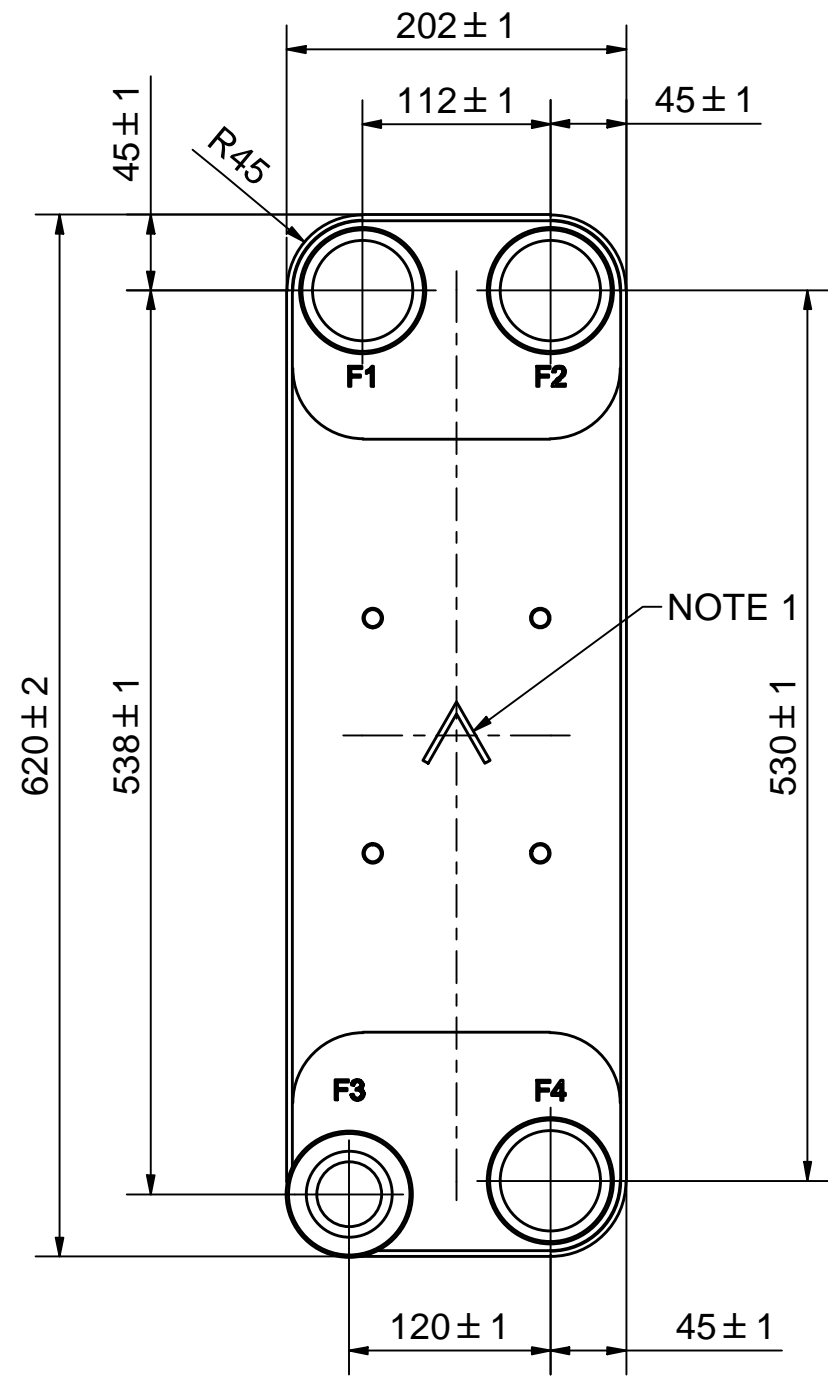


#	MM	IN
A	620	24.41
B	202	7.95
C	538	21.18
D	112	4.41
F	14.00+1.91*(NoP)	0.55+0.08*(NoP)
G	0	0
H	530	20.87
I	120	4.72
K	45	1.77
N	45	1.77
R	45	1.77
E_1	27	1.06

PED pression / température



© Company Confidential, Property of SWEP International AB





AXINTRA
ÉCHANGEURS THERMIQUES

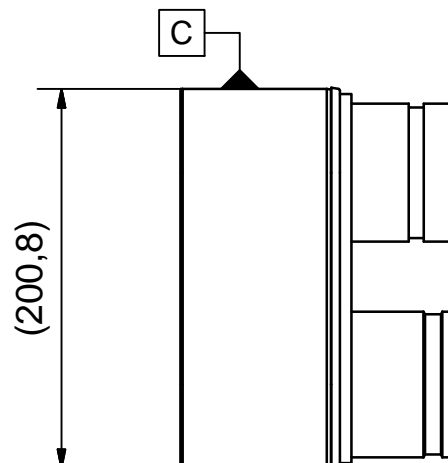
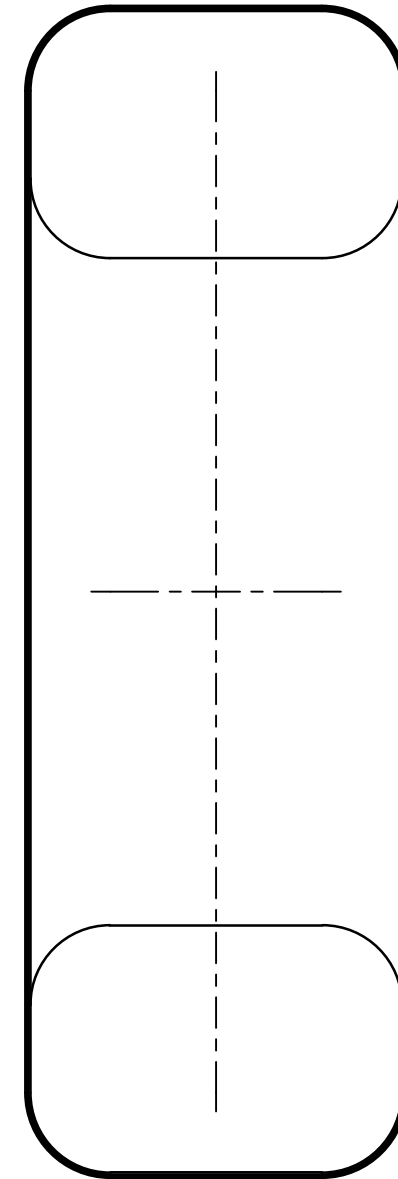
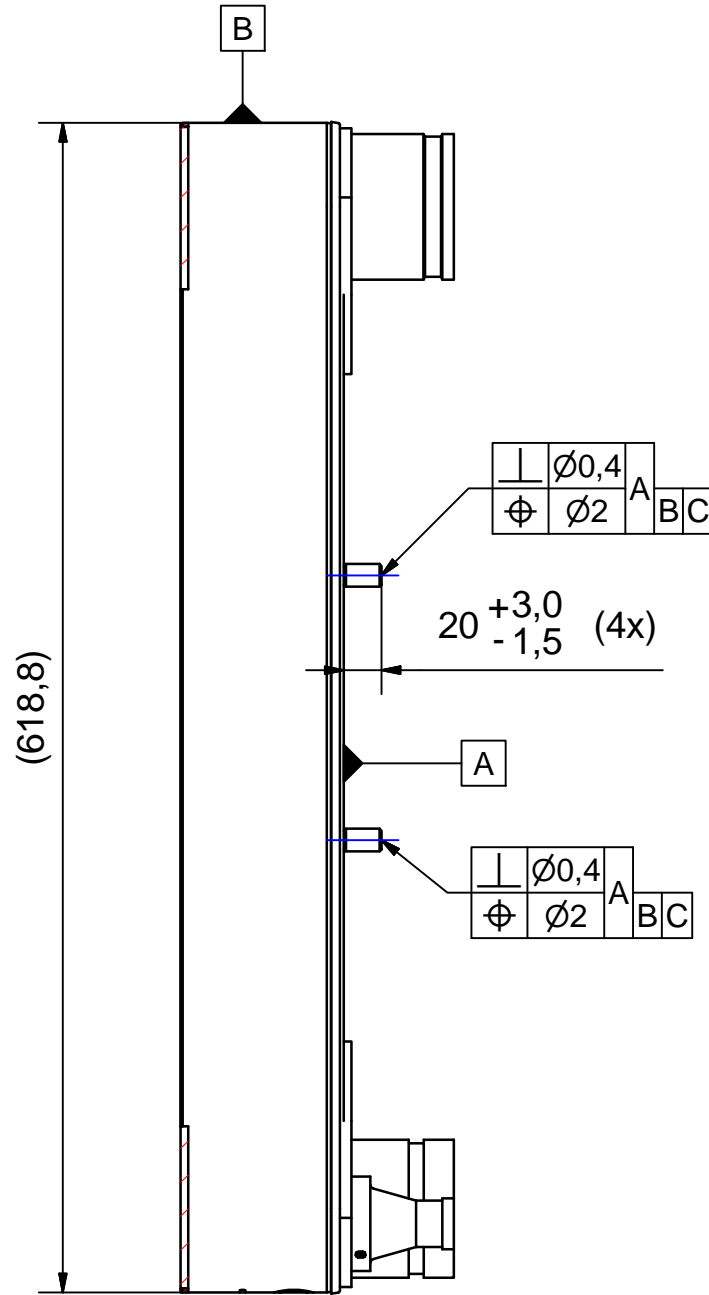
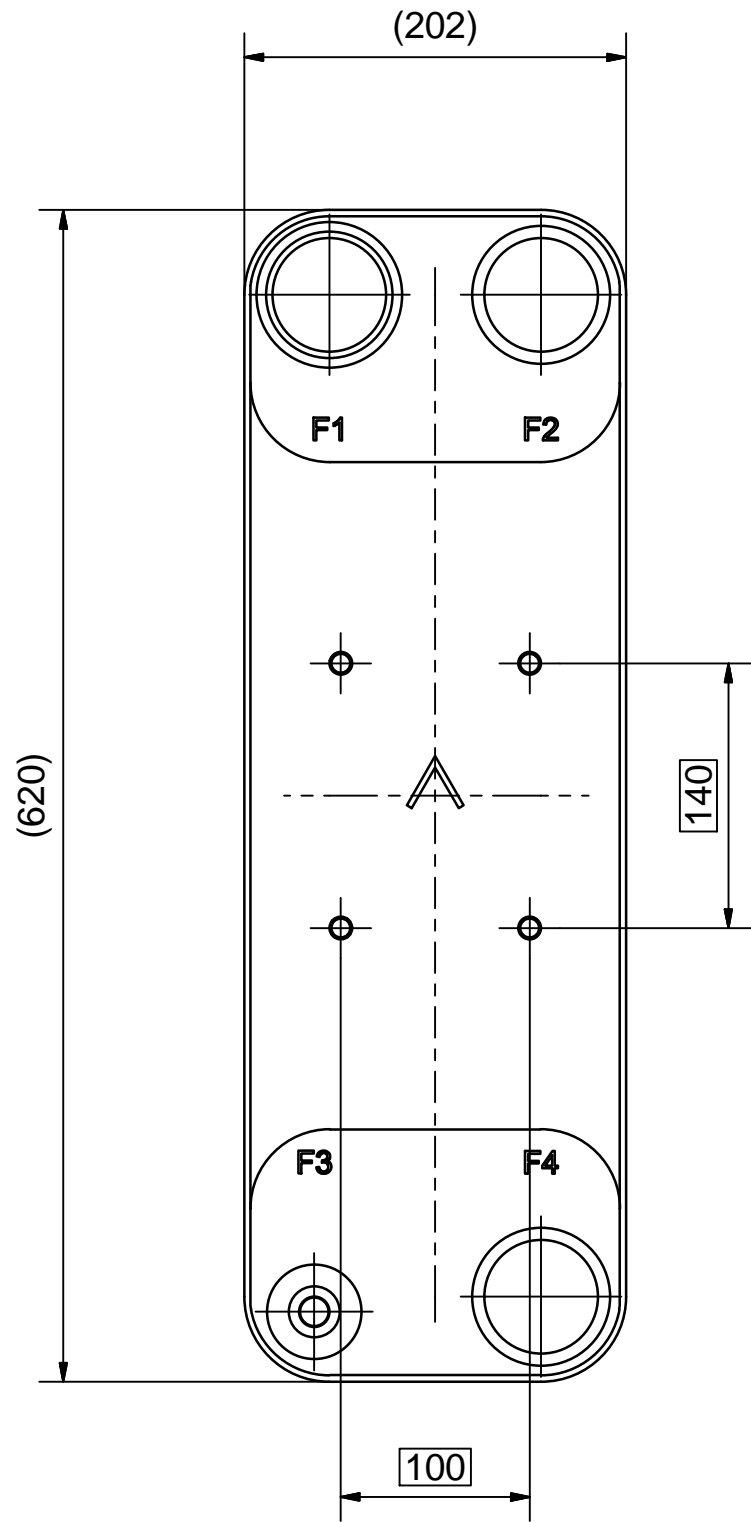
NOTE 1 ALTERNATE MARKING: STICKER OR STAMP

F4	45311	ISO-G 2 1/2 A, TH = 54,2	CD000051
F3	45341	ISO-G 2 1/2 , TH = 54,2	CD000059
F2	45311	ISO-G 2 1/2 A, TH = 54,2	CD000051
F1	45311	ISO-G 2 1/2 A, TH = 54,2	CD000051
F	21945	250/250AS BOLT LOC F 4x C140x100	00030363_1
Pos	Article No	Title / Denomination, code, material, dimension etc	Drawing No./ref

Pos	Article No	Title / Denomination, code, material, dimension etc	Drawing No./ref
-----	------------	---	-----------------

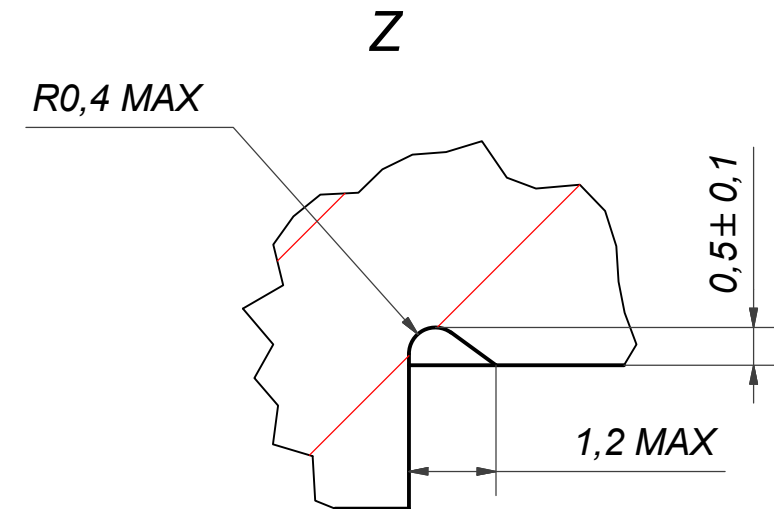
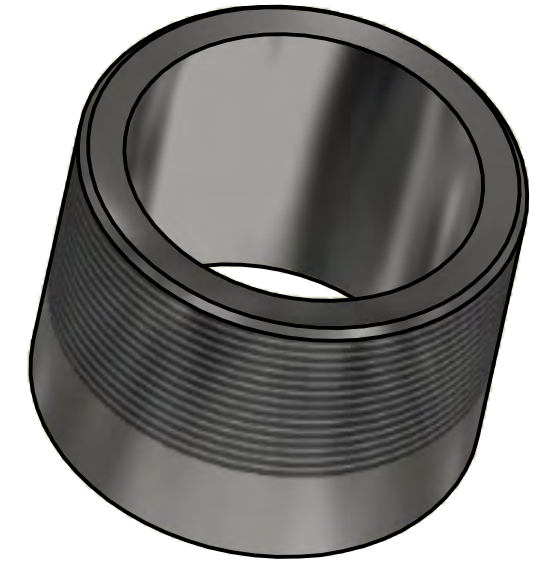
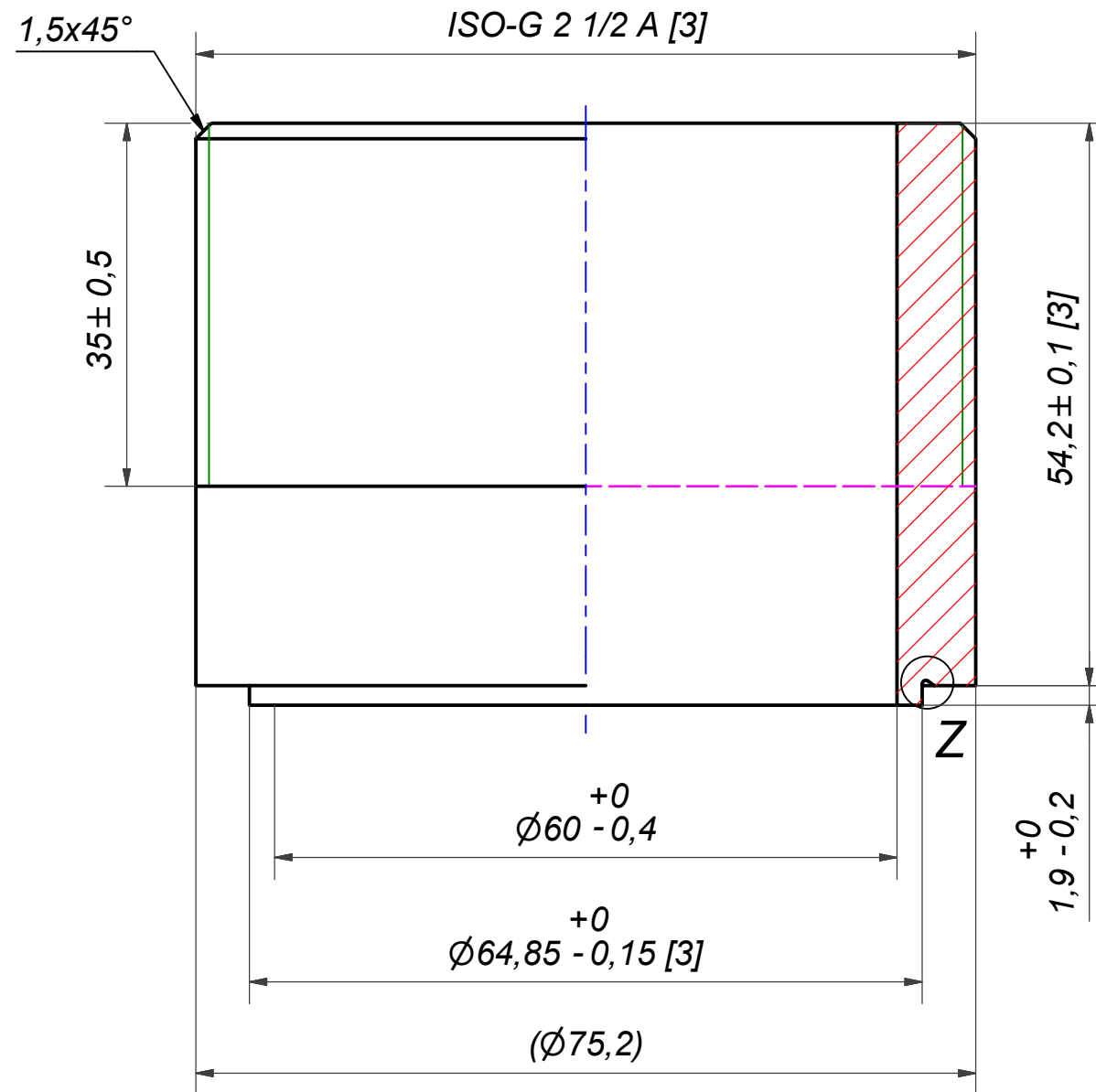
Title B250ASHx174/1P-NC-H 2 1/2"+3x2 1/2"			
 A DOVER COMPANY	Created Date 2024-07-16	Created By AU	
	Article/Configuration number 03447013.0	Drawing number AU00053521_03447013.0	

Rev No	Alteration	Date	Checked	Approved
00				PDM



1	4	STUD BOLT M12 x 20, ART. NO. 45095				M12x20	
Item	QTY	Description				Drawing / Article	
Drawn	Checked	Approved	Created Date	General geometrical tolerancing ISO 2768	General surface finish R_a	Scale	Paper size
skppr	PDM	PDM	2016-05-13			-	A3
		Title					
		250/250AS STUDBOLT LOC. F 4X C140x100					
Article number		Design Type	Drawing number	Revision	Sheet		
21945		CG	00030363	00	1 (1)		

Rev No	Alteration	Date	Checked	Approved
10	ECN-000223:update of thread designation	2022-02-10	10083926	PDM

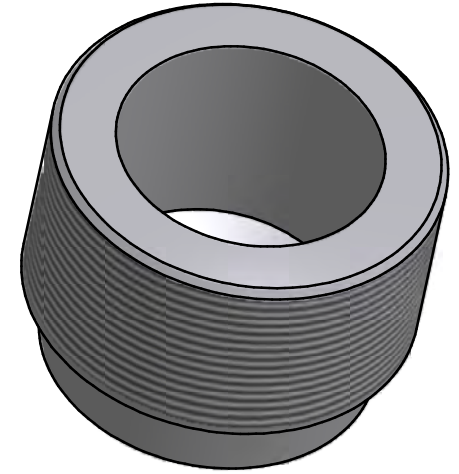
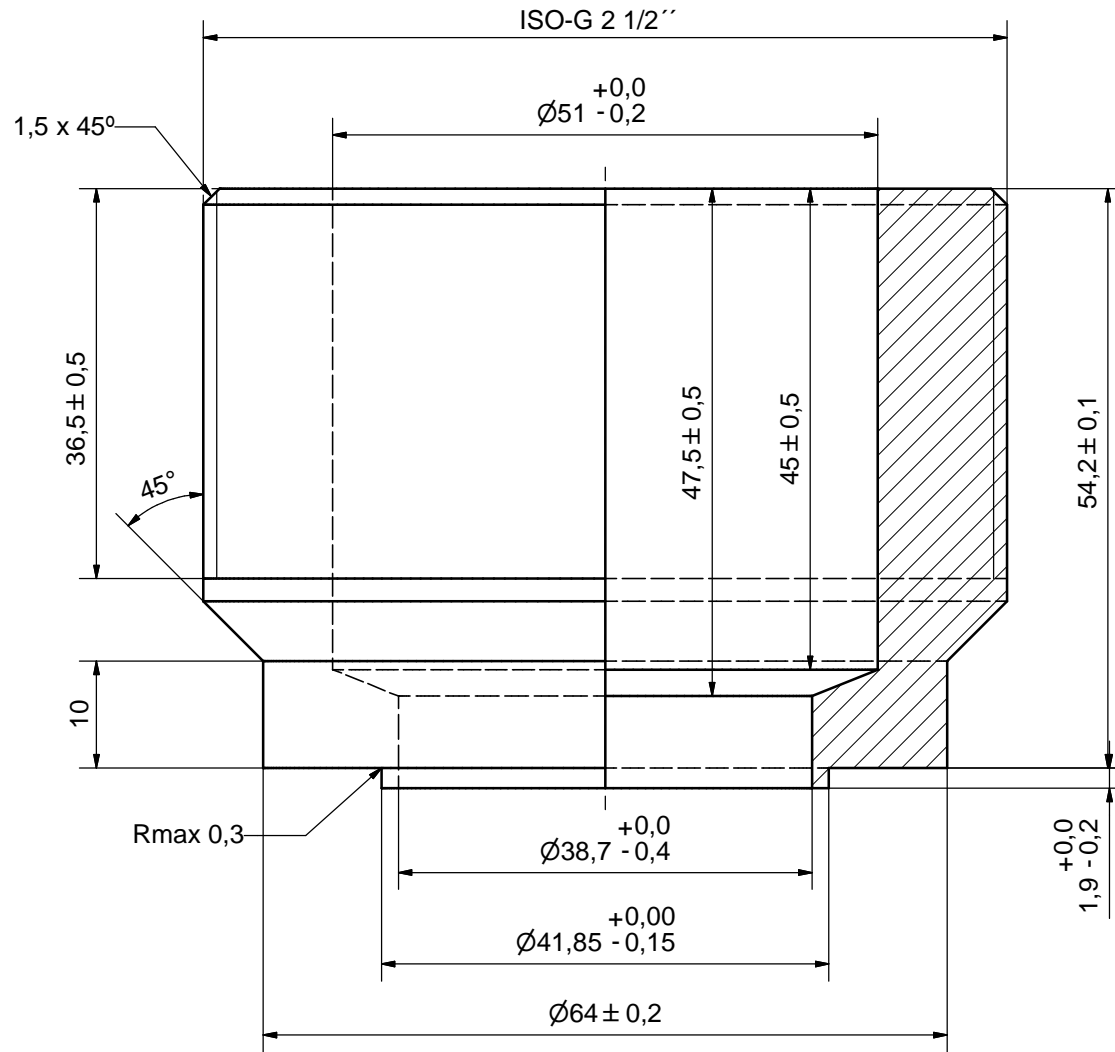


NOTE 2: [3] - CRITICAL/SPECIAL CHARACTERISTIC TO BE FOLLOWED
NOTE 1: DEBURR SHARP EDGES; MAX 0.4

ACCORDING TO MQS
MATERIAL

Drawn	Checked	Approved	Created Date	General geometrical tolerancing ISO 2768:	General surface finish R_a :	Scale	Paper size
miguser	PDM	PDM	1991-03-15	mK	3.2	-	A3
			Title: ISO-G 2 1/2 A				
			Article number	Design Type	Drawing number	Revision	Sheet
			CD	CD000051	10	1 (1)	

Rev No.	Alteration	Date	Checked	Approved
8	DEBURRING INFO ADDED	2009/03/10	TL	PDM



SHARP EDGES DEBURRED MAX 0,4

ACCORDING TO MQS
MATERIAL

Drawn SA	Checked TP	Approved VP	Created Date 1991-10-17	General geometrical tolerancing ISO 2768 m	General surface finish R_a 3.2		Scale -
			ISO-G 2 1/2				
Article number -		Drawing number CD000059		Revision 8	Sheet 1 (1)		