

F120T

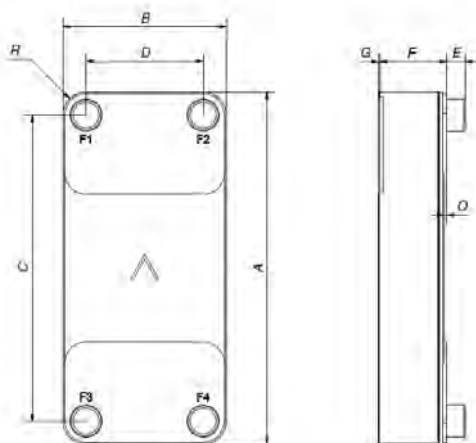
Le F120T est un évaporateur optimisé pour fournir de hautes performances. Il combine un format compact et un agencement de plaques spécialement développé pour créer un échangeur thermique extrêmement efficace. Le F120T est le choix idéal pour les chillers, les pompes à chaleur et les économiseurs.



Spécifications de base

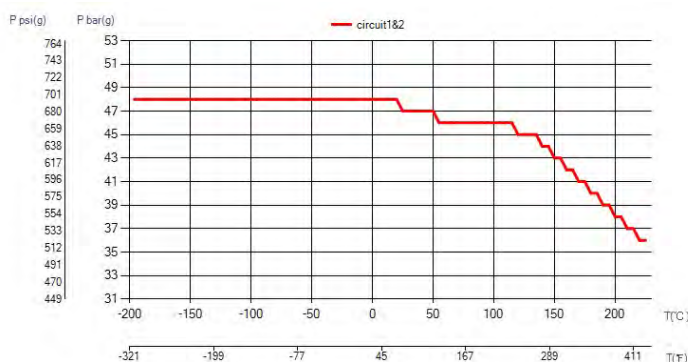
Nombre de plaques max. (NoP)	250
Débit volumétrique max.	27,4 m³/h (17.61 gpm)
Volume du canal	0.241/0.241 dm³ (0.0085/0.0085 ft³)
Matières	Plaques en acier inoxydable 304, brasage cuivre
Poids sans les connexions	8.33+(0.424*NoP) kg 18.36+(0.935*NoP) lb
Taille la taille des Particules (mm)	1

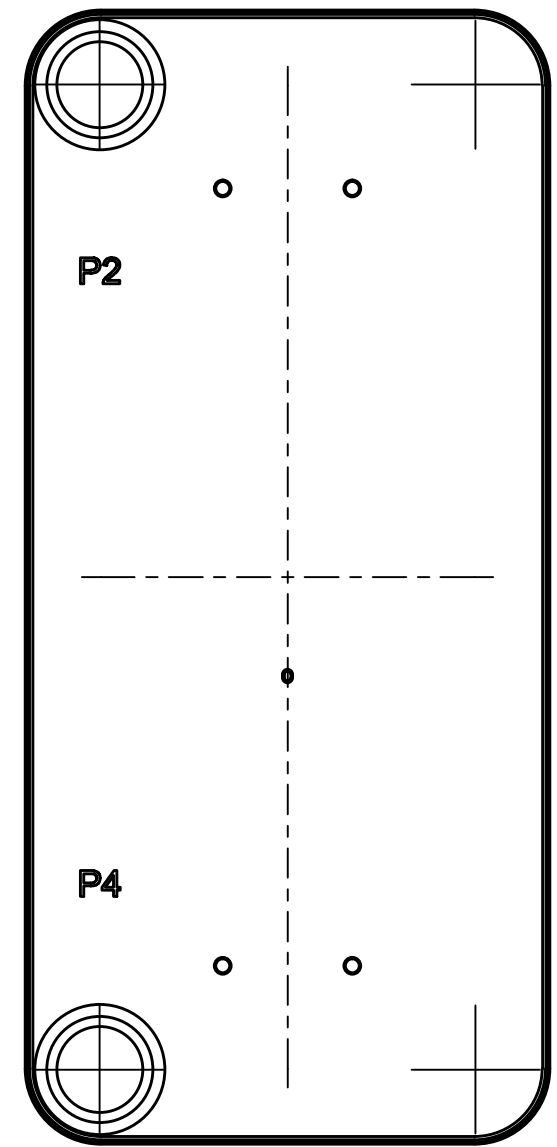
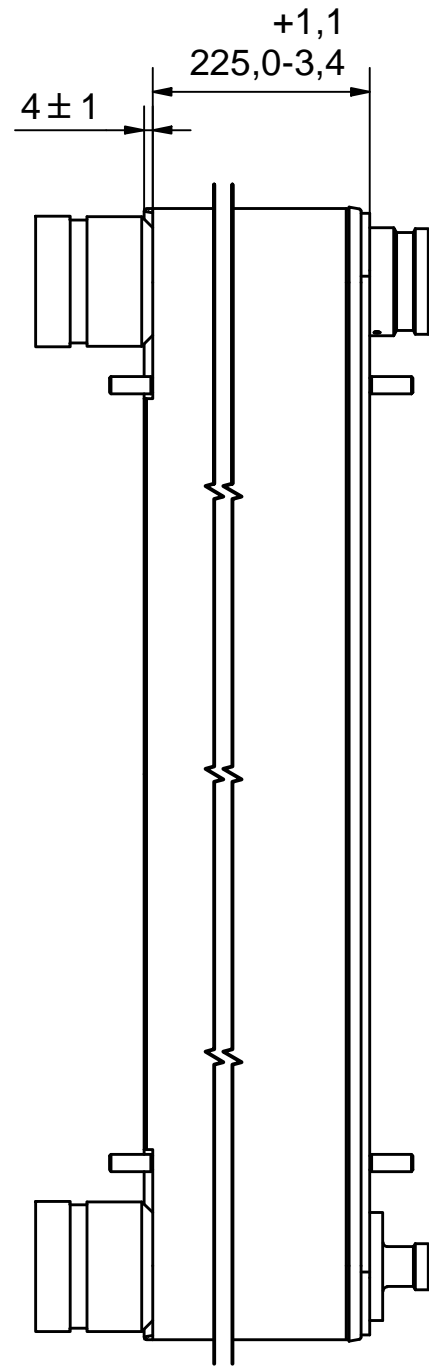
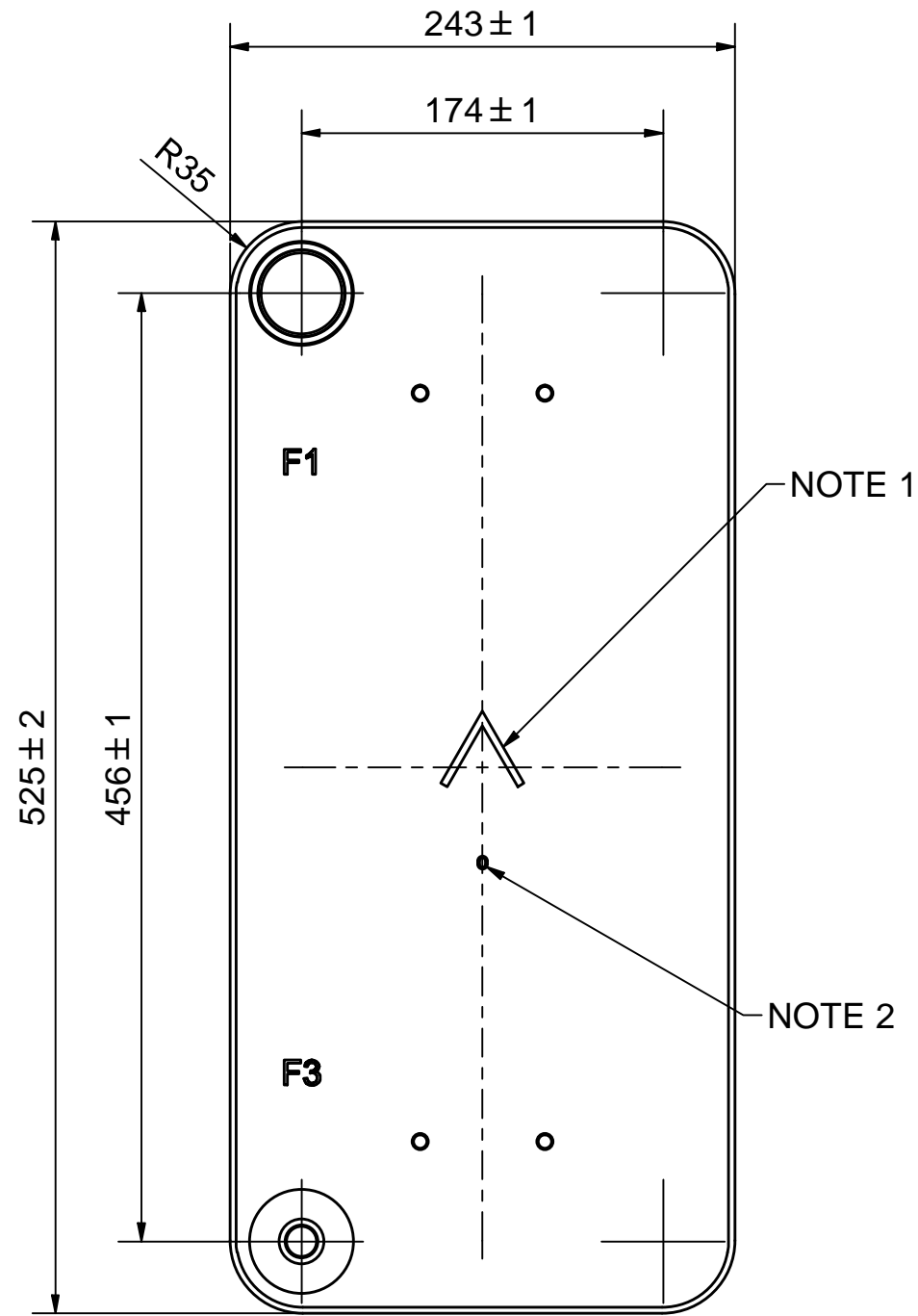
Les dimensions standard



#	MM	IN
A	525	20.67
B	243	9.57
C	456	17.95
D	174	6.85
F	10,00+2,29*(NoP)	0.39+0.09*(NoP)
G	4	0.16
R	35	1.38
E_1	27	1.06
E_2	54	2.13

PED pression / température





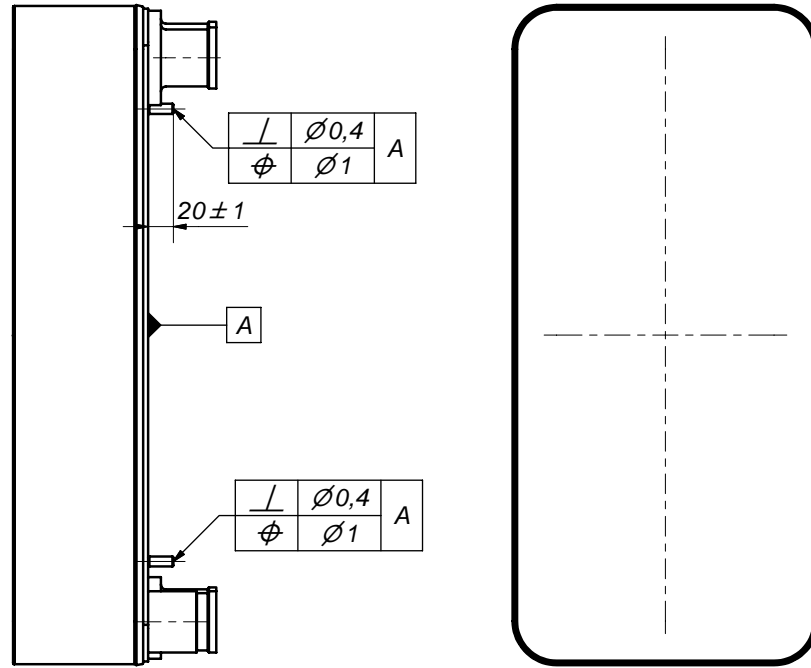
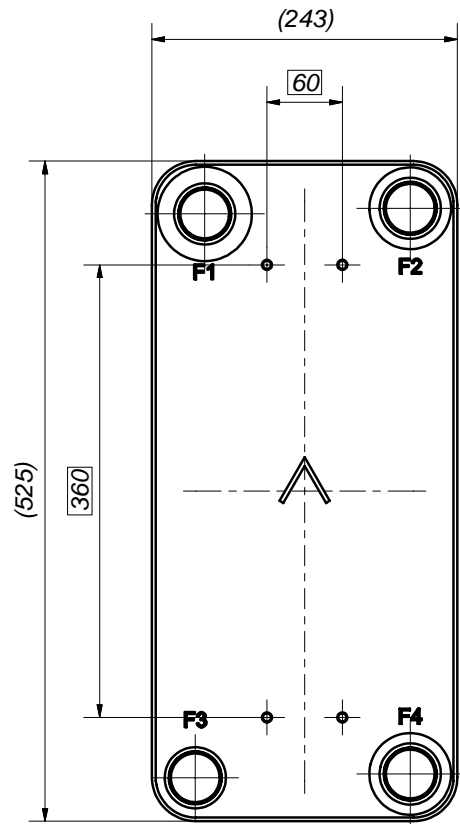
NOTE 1 ALTERNATE MARKING: STICKER OR STAMP

NOTE 2 MARKING TEXT "0" FOR IDENTIFICATION ONLY
0= AISI 304




F3	46905	SOLDER $\phi 16$, TH = 27,1	CD000416	P4	33402	VIC 2 SPEC, TH = 54,2	CD001051
F1	33334	SOLDER 42U, TH = 27,1	CD001043	P2	33402	VIC 2 SPEC, TH = 54,2	CD001051
F	21632	B120T/50/56/200T STUD B LOC. F 4x	CG450042_1	P	21633	B120T/50/56/200T STUD B LOC. F 4x	CG450043_1
Pos	Article No	Denomination, code, material, dimension etc	Drawing No./ref	Pos	Article No	Denomination, code, material, dimension etc	Drawing No./ref

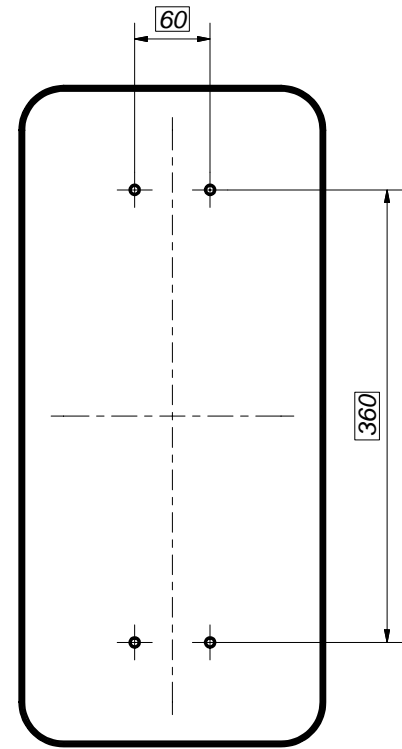
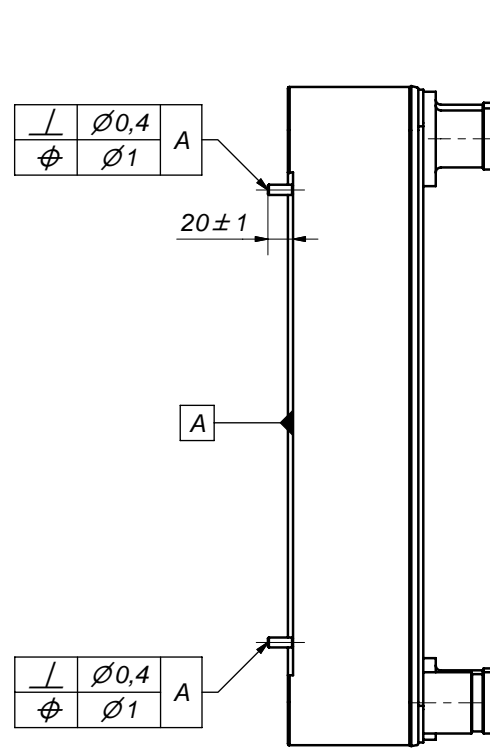
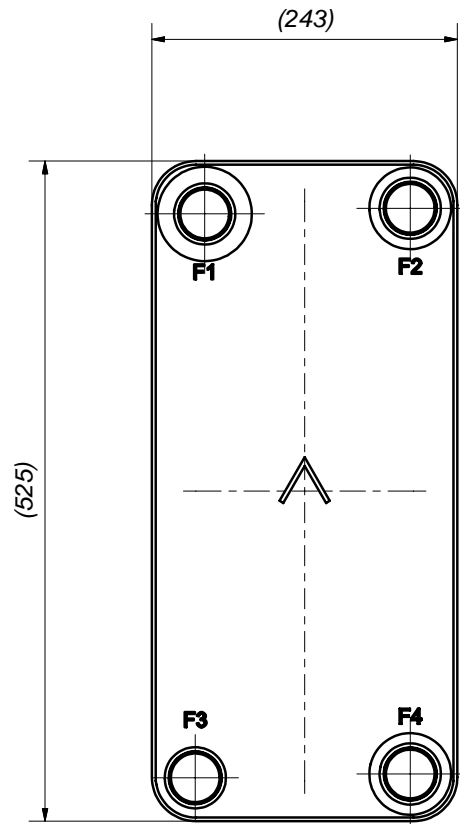
Title		F120TH/1P-NC-M	
	Created Date	2024-07-16	Created By
	Article/Configuration number	16652-94	Drawing number
			AU
			AU00053444_16652-94




AXINTRA
ÉCHANGEURS THERMIQUES

1	4	STUD BOLT M8x20 ART. NO. 45162				M8 x 20
Item	QTY	Title				Draw.Nr.
Drawn	Checked	Approved	Created Date	General geometrical tolerancing ISO 2768:	General surface finish R:	Scale
RJ	PDM	PDM	2008-11-06	m	3.2	-
			Title B120T/50/56/200T STUD B LOC. F 4x C360x60			
Article number		Drawing number		Revision	Sheet	
21632		CG450042		-	1 (1)	

A DOVER COMPANY

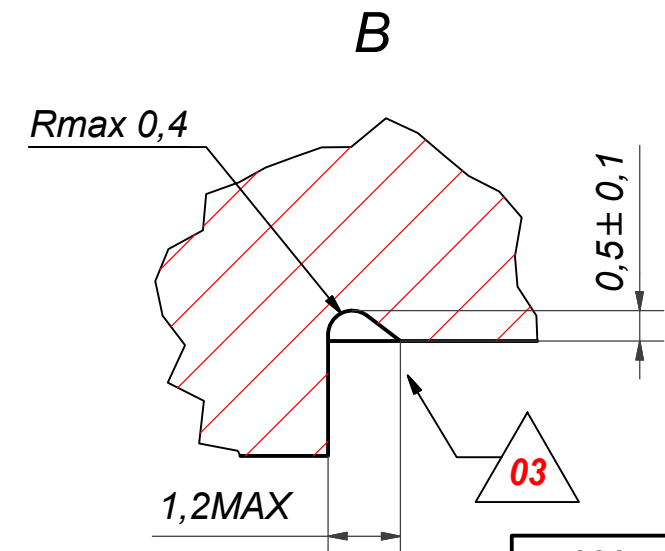
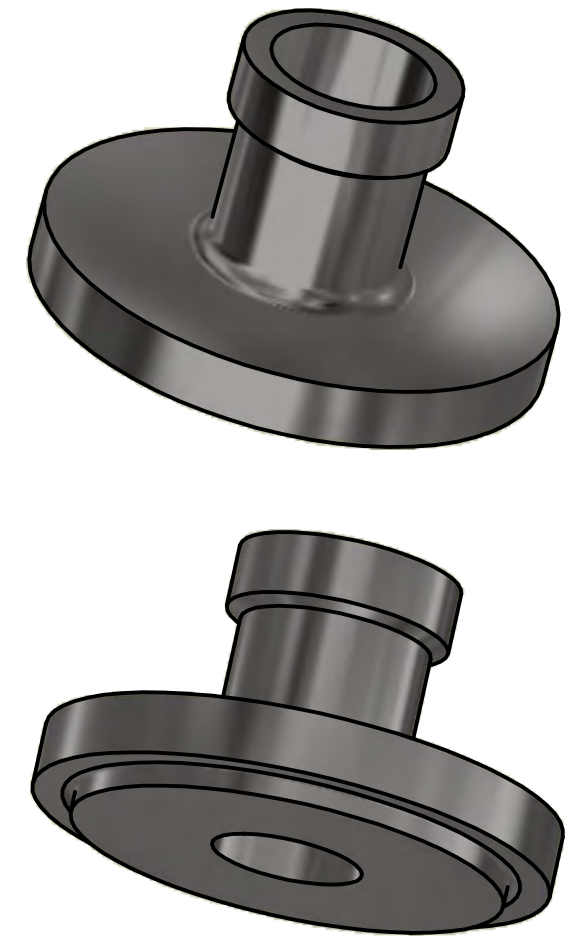
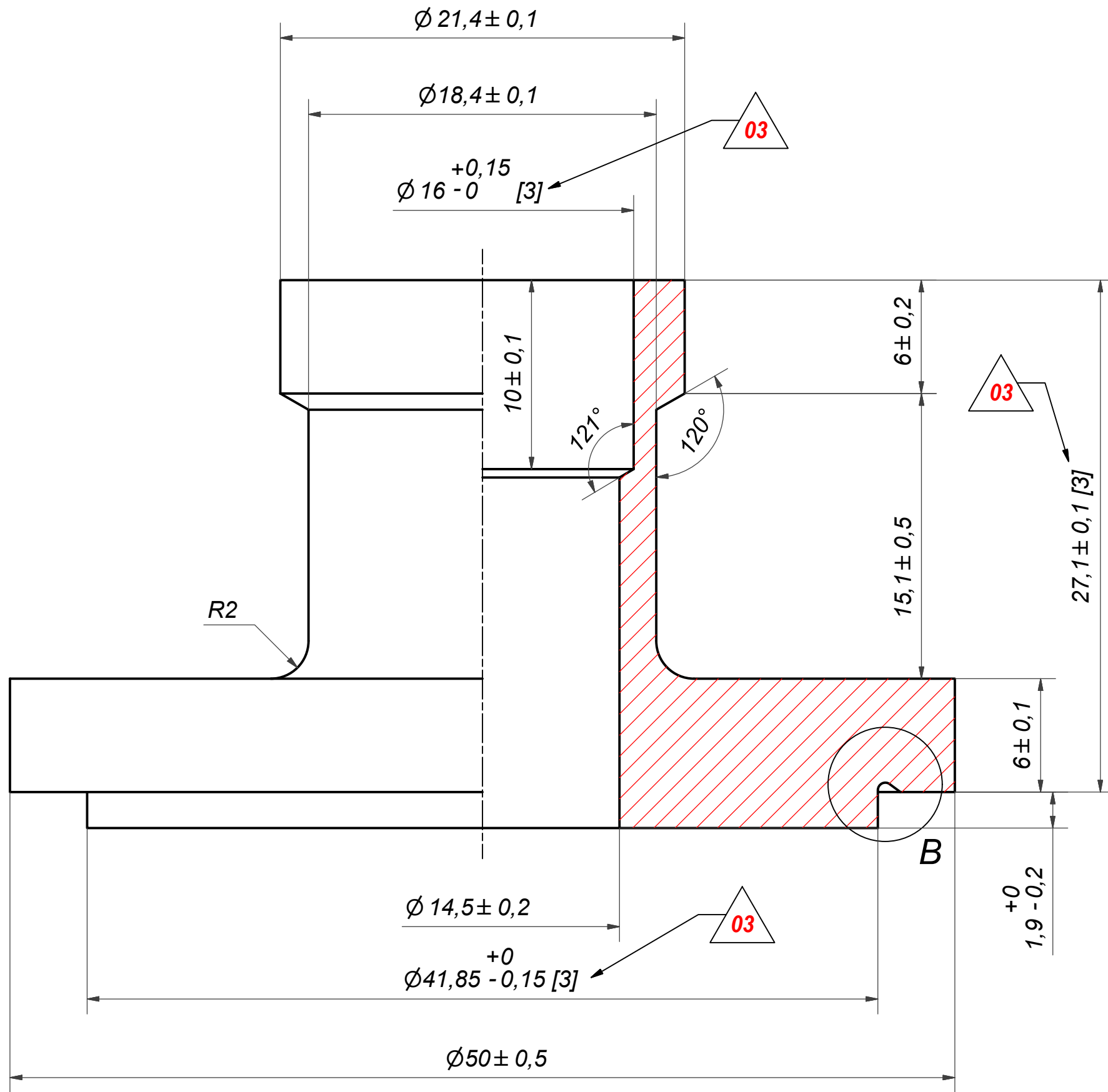


AXINTRA
ÉCHANGEURS THERMIQUES

1	4	STUD BOLT M8x20 ART. NO. 45162				M8 x 20
Item	QTY	Title				Draw.Nr.
Drawn	Checked	Approved	Created Date	General geometrical tolerancing ISO 2768:	General surface finish R:	Scale
RJ	PDM	PDM	2008-11-07	m	3.2	-
			Title B120T/50/56/200T STUD B LOC. P 4x C360x60			
Article number		Drawing number		Revision	Sheet	
21633		CG450043		-	1 (1)	

A DOVER COMPANY

Rev No	Alteration	Date	Checked	Approved
03	DESIGN CHANGE ACCORDING ECN-000362	2019-11-20	SKGL	PDM



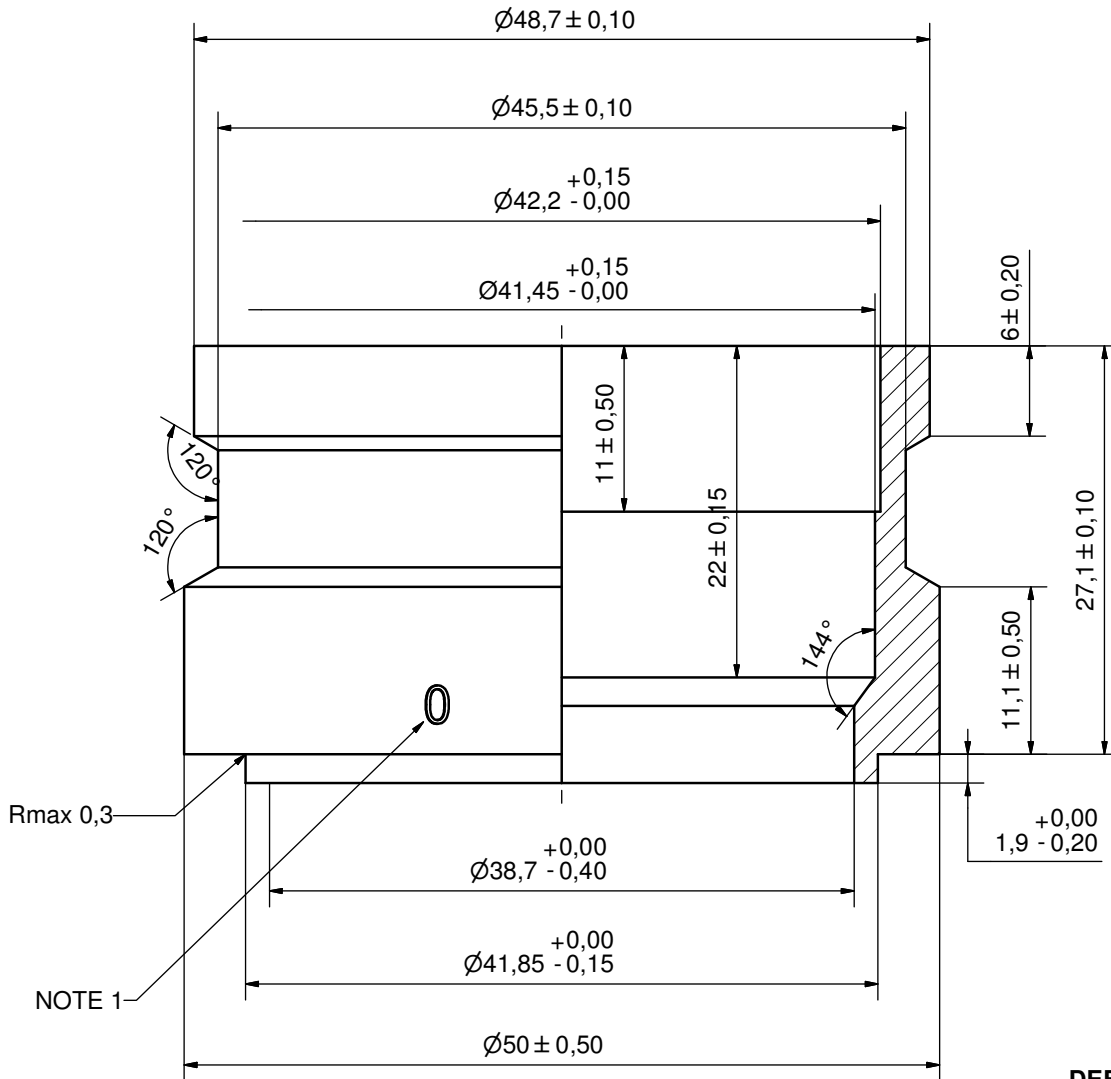
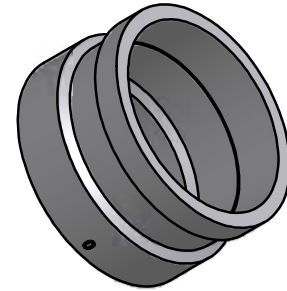
ACCORDING TO MQS
MATERIAL

NOTE 2: [3] - CRITICAL/SPECIAL CHARACTERISTIC TO BE FOLLOWED
NOTE 1: DEBURR SHARP EDGES; MAX 0.4



Drawn	Checked	Approved	Created Date	General geometrical tolerancing ISO 2768:	General surface finish R_a :	Scale	Paper size
OA	PDM	PDM	1999-07-15	m	3.2	-	A3
Title: SOLDER Ø16							
Article number	Design Type	Drawing number	Revision	Sheet			
	CD	CD000416	03	1 (1)			

Rev No.	Alteration	Date	Checked	Approved
1	DEBURR INFO ADDED	2009/08/04	MA	PDM



NOTE 1: MARKING TEXT "0" FOR IDENTIFICATION ONLY
PRESENT AT 2 PLACES 180° FROM EACH OTHER
0 = 304 MATERIAL

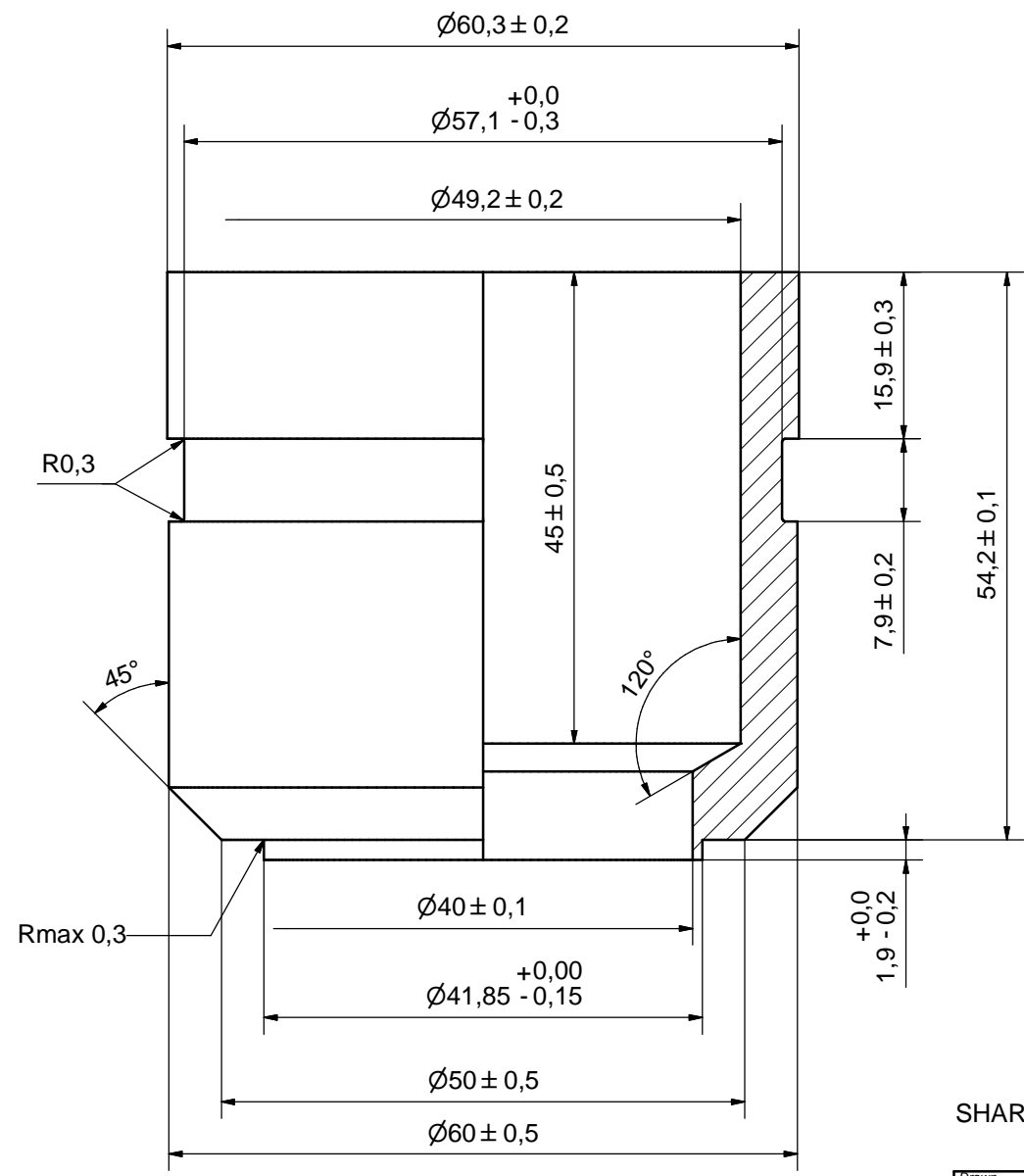
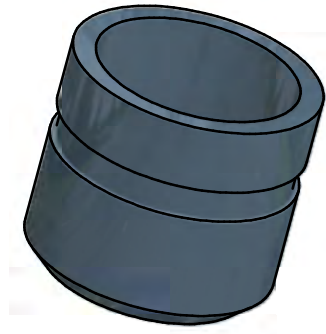


DEBURR SHARP EDGES; MAX 0,4

ACCORDING TO MQS
MATERIAL

Drawn	Checked	Approved	Created Date	General geometrical tolerancing ISO 2768	General surface finish R_a	Scale
RJ	PDM	PDM	2008-09-10	m	3.2	-
			SOLDER 42U			
Article number		Drawing number		Revision	Sheet	
-		CD001043		1	1 (1)	


Rev No.	Alteration	Date	Checked	Approved
1	DEBURRING INFO ADDED	2009/03/11	TL	PDM



SHARP EDGES DEBURRED MAX 0,4

ACCORDING TO MQS
MATERIAL

Drawn	Checked	Approved	Created Date	General geometrical tolerancing ISO 2768	General surface finish R_a	Scale
TPE	PDM	PDM	2008-10-29	m	3.2	-

				VIC 2 SPEC			
Article number		Drawing number		Revision		Sheet	
-		CD001051		1		1 (1)	