

P200T

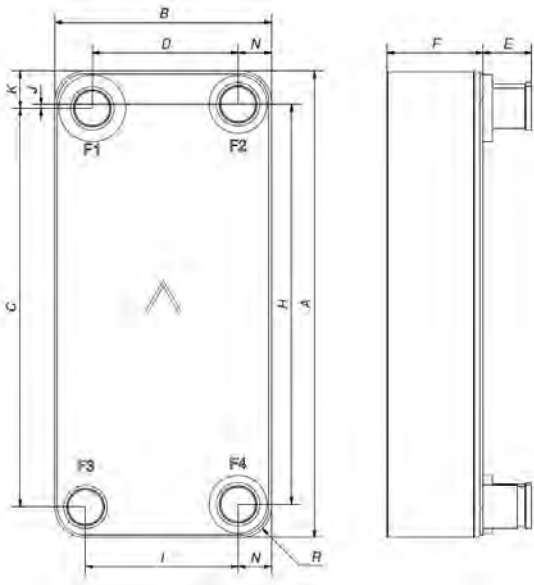
Le P200T est un évaporateur optimal pour fournir de hautes performances. Il combine un format compact et un agencement de plaques spécialement développé pour créer un échangeur thermique extrêmement efficace. Le P200T est le choix idéal pour les chillers, les pompes à chaleur et les économiseurs.



Spécifications de base

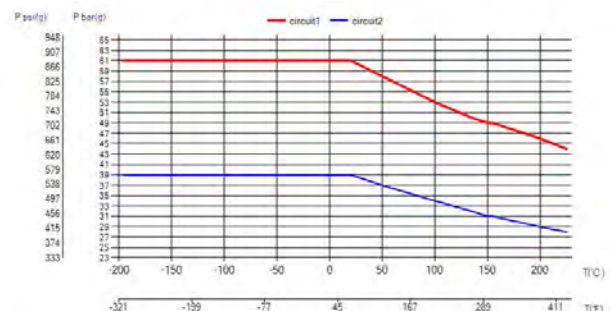
Nombre de plaques max. (NoP)	250
Débit volumétrique max.	43,7 m ³ /h (30.82 gpm)
Volume du canal	0.241/0.241 dm ³ (0.0085/0.0085 ft ³)
Matières	Plaques en acier inoxydable 316/316L, brasage cuivre
Poids sans les connexions	20.65+(0.45*NoP) kg 45.52+(0.992*NoP) lb
Taille la taille des Particules (mm)	1

Les dimensions standard

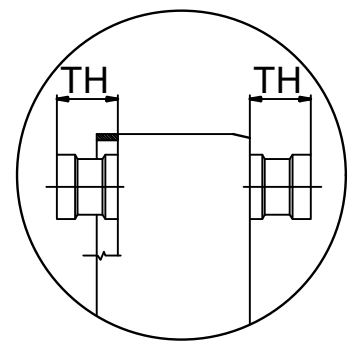
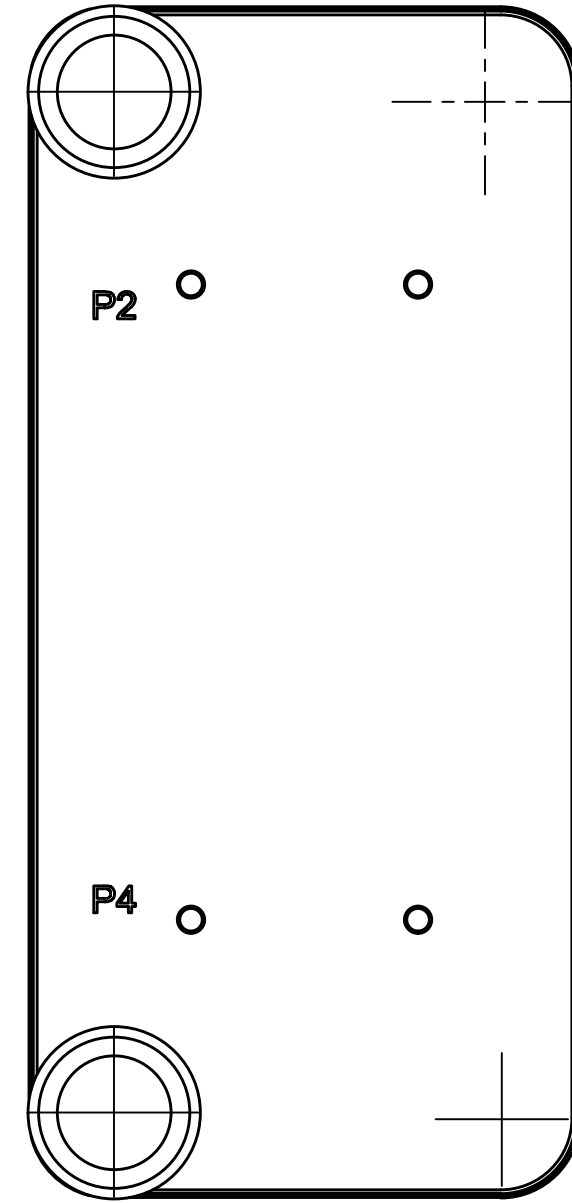
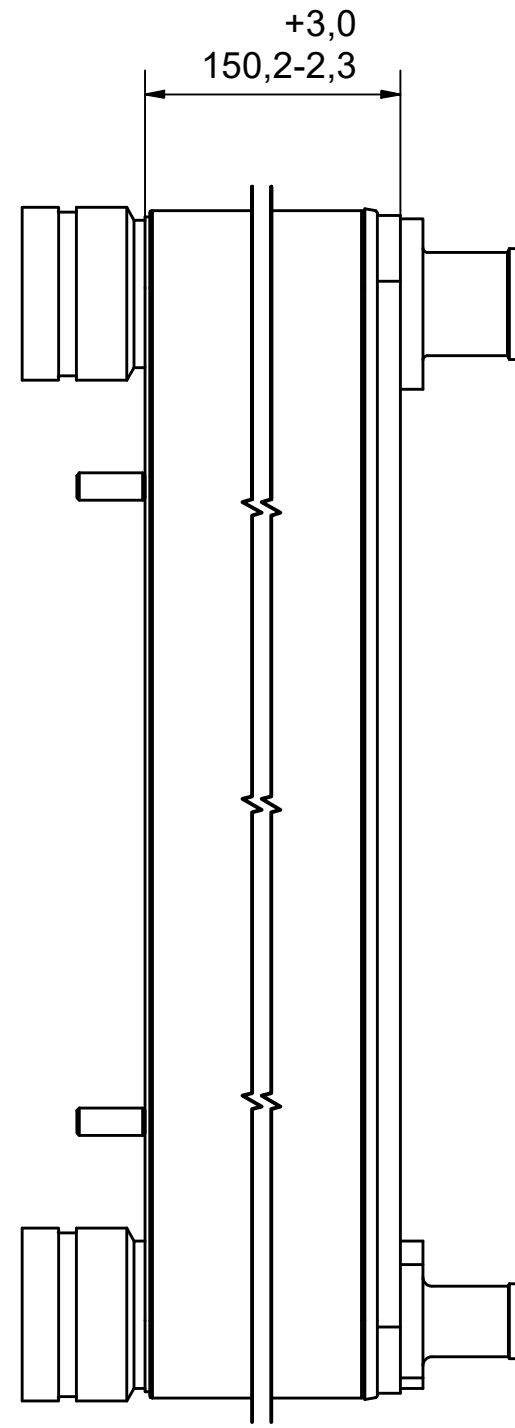
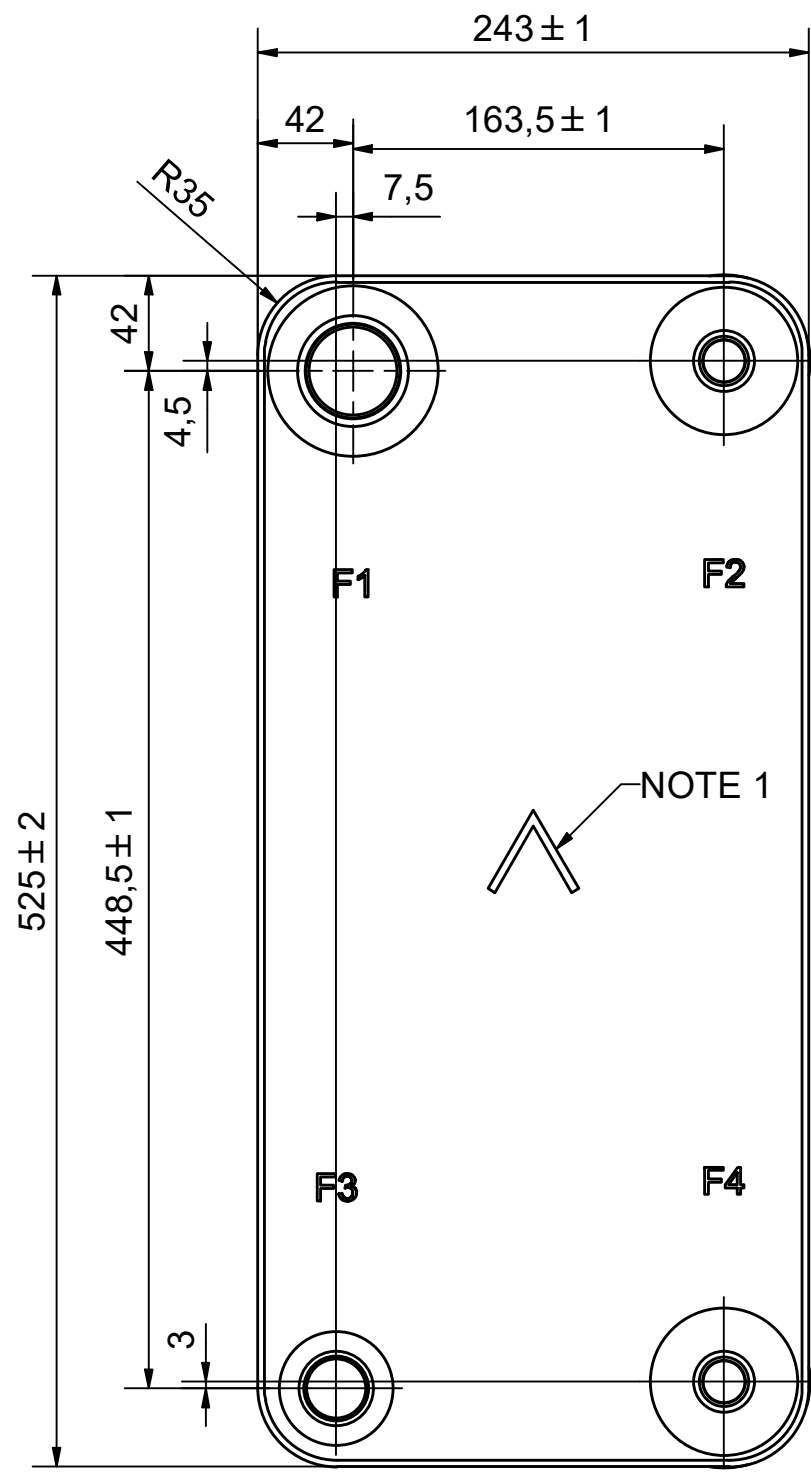


#	MM	IN
A	525	20.67
B	243	9.57
C	448.50	17.66
D	163.50	6.44
F	22,00+2,29*(NoP)	0.87+0.09*(NoP)
G	0	0
H	450	17.72
I	171	6.73
J	4.50	0.18
K	42	1.65
N	37.50	1.48
R	35	1.38
E_1	54	2.13
E_2	27	1.06

PED pression / température




© Company Confidential, Property of SWEP International AB



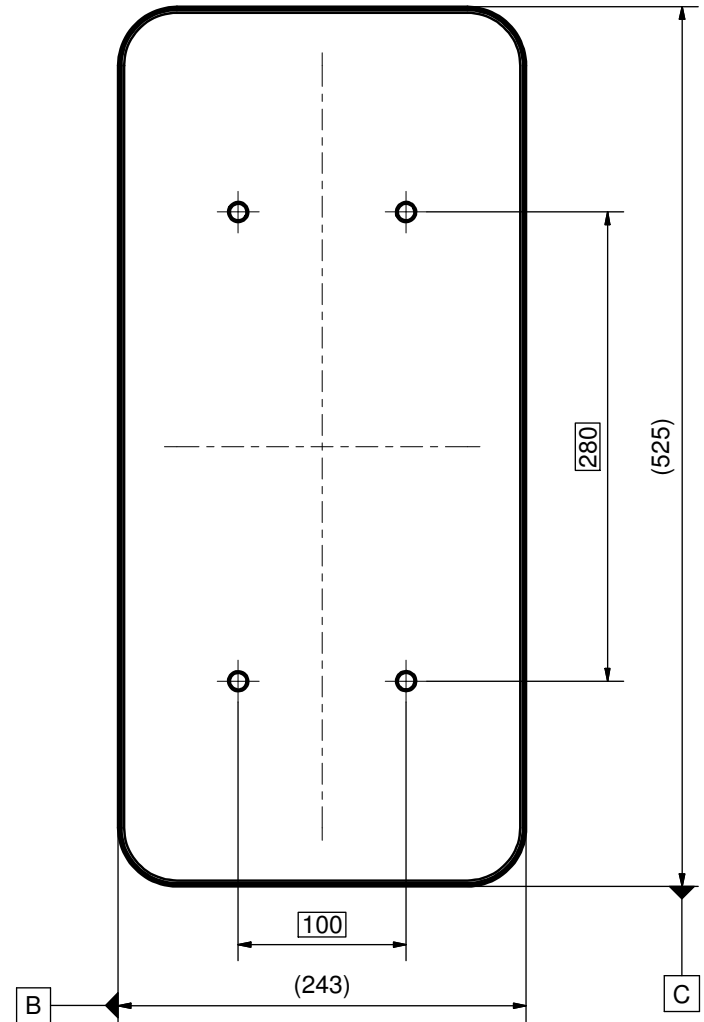
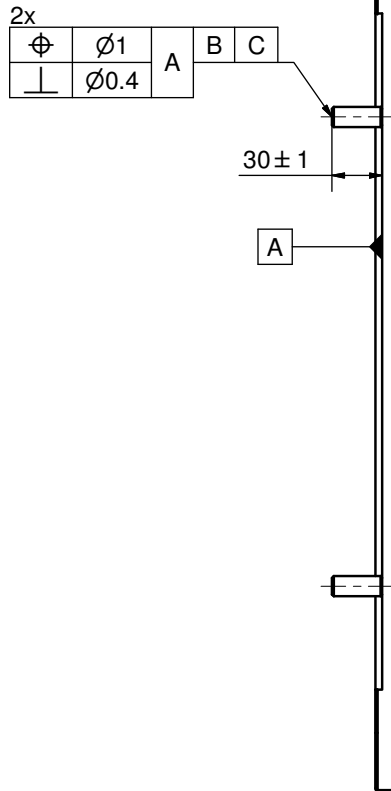
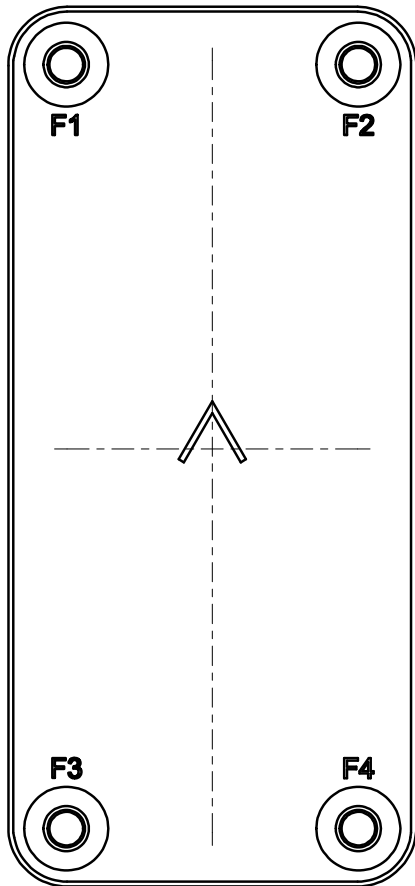
AXINTRA
ÉCHANGEURS THERMIQUES

NOTE 1 ALTERNATE MARKING: STICKER OR STAMP

F4	46470	ISO-G 1/2 INT, TH = 54,2	CD000373				
F3	30105	SOLDER 28U, TH = 54,2	CD000608	P4	32487	VIC 3 OD, TH = 54,2	CD000772
F2	46470	ISO-G 1/2 INT, TH = 54,2	CD000373	P2	32487	VIC 3 OD, TH = 54,2	CD000772
F1	45570	SOLDER 42U, TH = 54,2	CD000159	P	21500	B45/50/200 BOLT P 4xC280x100	CG450031
Pos	Article No	Title / Denomination, code, material, dimension etc	Drawing No./ref	Pos	Article No	Title / Denomination, code, material, dimension etc	Drawing No./ref


Title		P200THx56/1P-SC-H 28U+42U+2x1/2"INT / 2x3"VIC OD	
 A DOVER COMPANY		Created Date	2024-07-25
		Created By	AU
Article/Configuration number		0241329.0	
Drawing number		AU00054297_0241329.0	

Rev No	Alteration	Date	Checked	Approved
01	Postional Tolerances modified	2011-12-05	INRJ	PDM

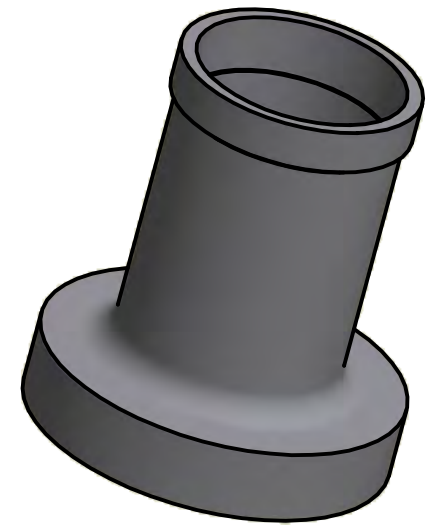
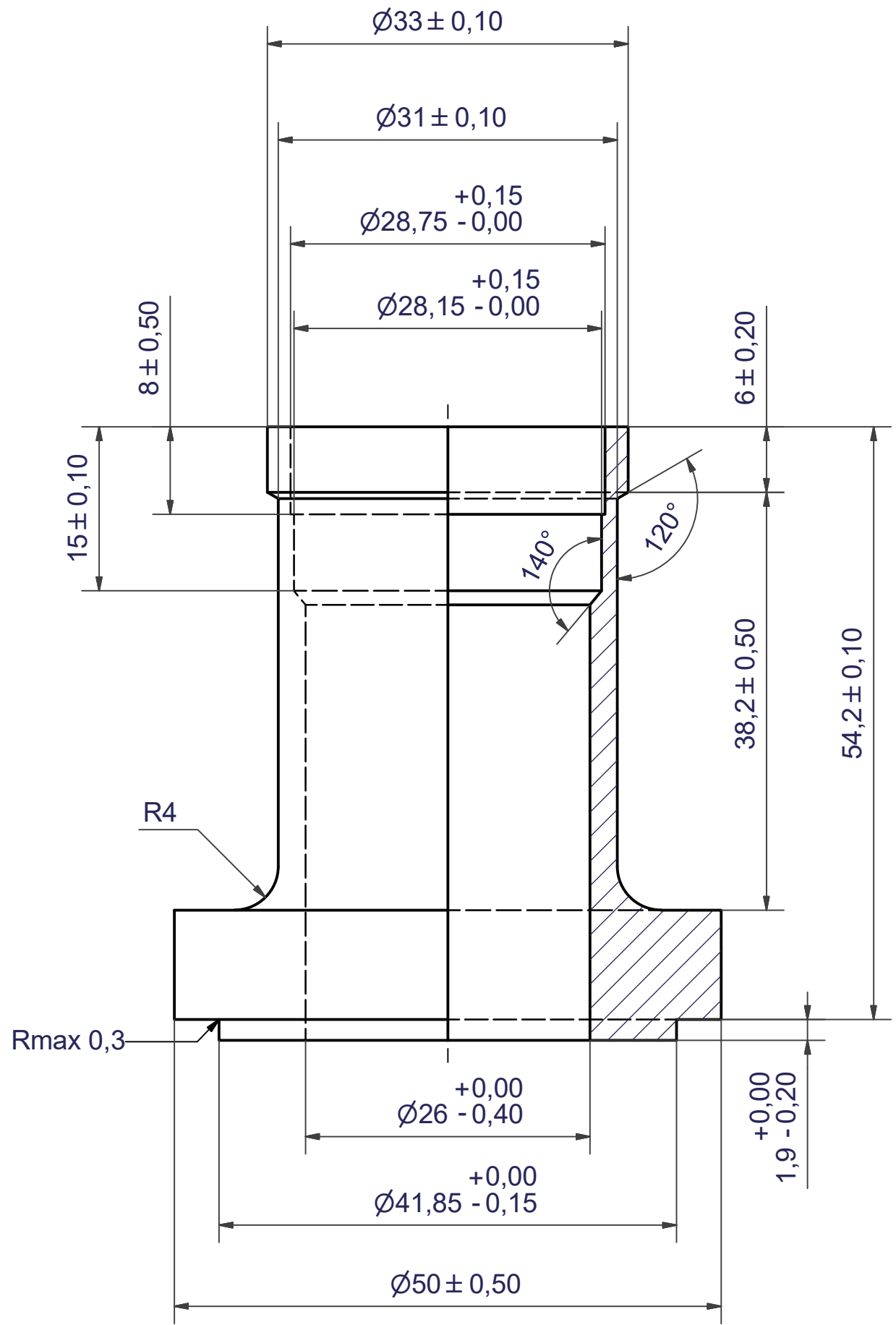


© Company Confidential, Property of SWEP International AB



4	STUD BOLT ART. NO. 45522						M12x30
QTY	DESCRIPTION						Drawing No./
Drawn	Checked	Approved	Created Date	General geometrical tolerancing ISO 2768:	General surface finish Ra	Scale	Paper size
THE	PDM	PDM	2006-10-06			-	A3
			Title B120T/50/200 BOLT P 4xC280x100				
Article / Tool number		Design Type	Drawing number	Revision	Sheet		
21500		CG	CG450031	01	1 (1)		

Rev No.	Alteration	Date	Checked	Approved
2	ADDED DEBURR & MATERIAL INFO	2009/07/29	AP	PDM




© Company Confidential, Property of SWEP International AB



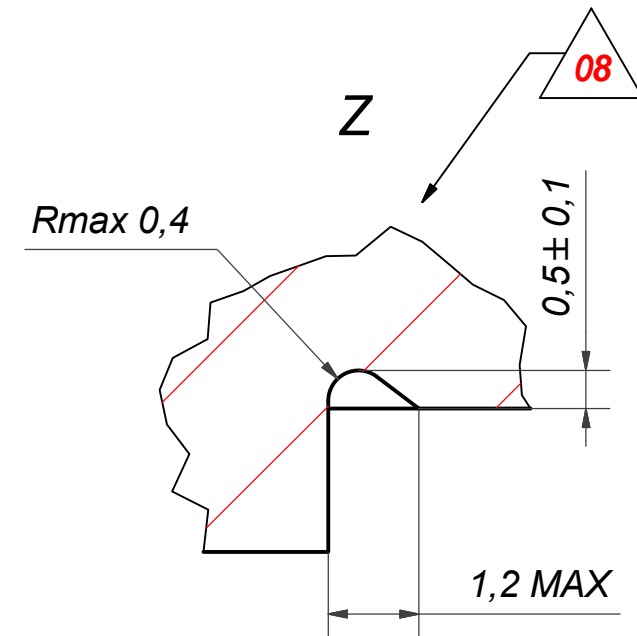
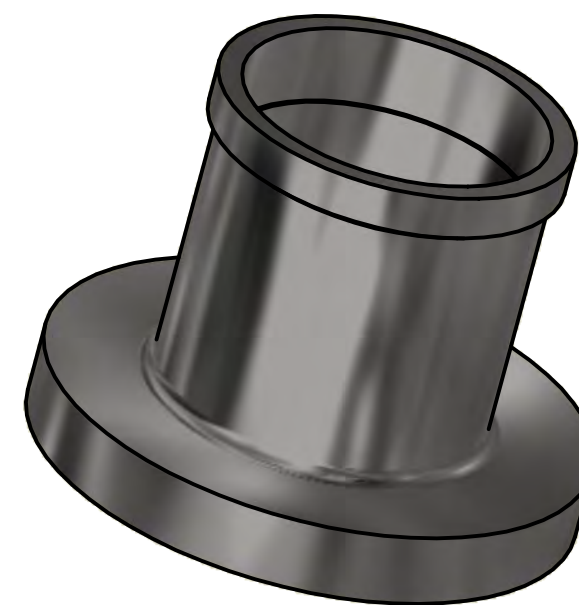
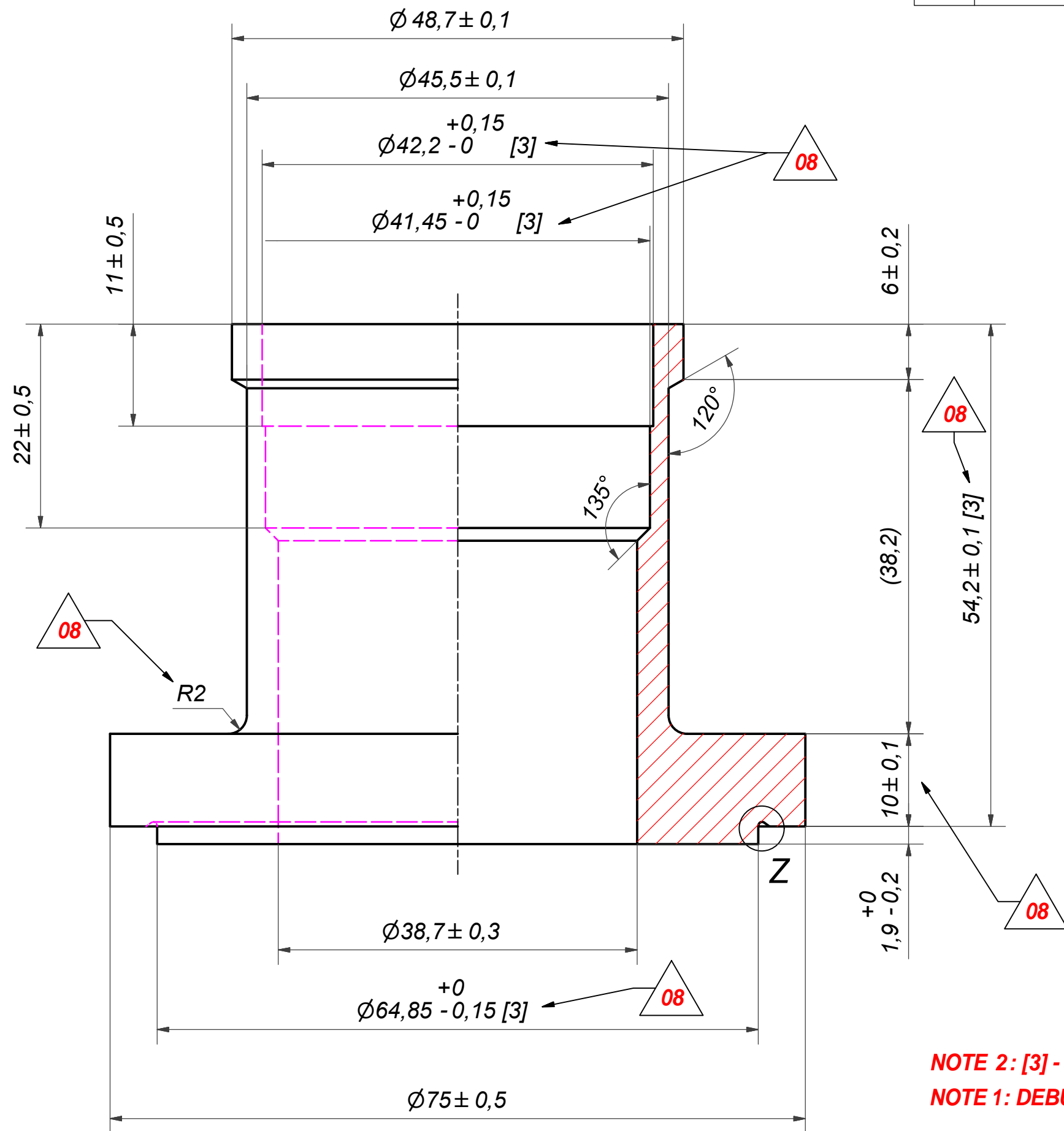
DEBURR SHARP EDGES; MAX 0,4

ACCORDING TO MQS
MATERIAL

Drawn miguser	Checked JA	Approved PNI	Created Date 2002-11-18	General geometrical tolerancing ISO 2768 m	General surface finish R_a 3.2	Scale 2:1
			Title SOLDER 28U			
Article number		Drawing number CD000608		Revision 02	Sheet 1 (1)	

A DOVER COMPANY

Rev No	Alteration	Date	Checked	Approved
08	ECN-000161: Added groove; Added dim 10, addedc [3], R was R4	2021-01-28	SKGL	PDM



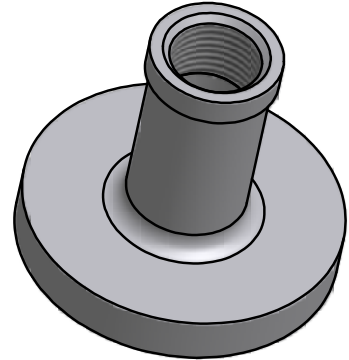
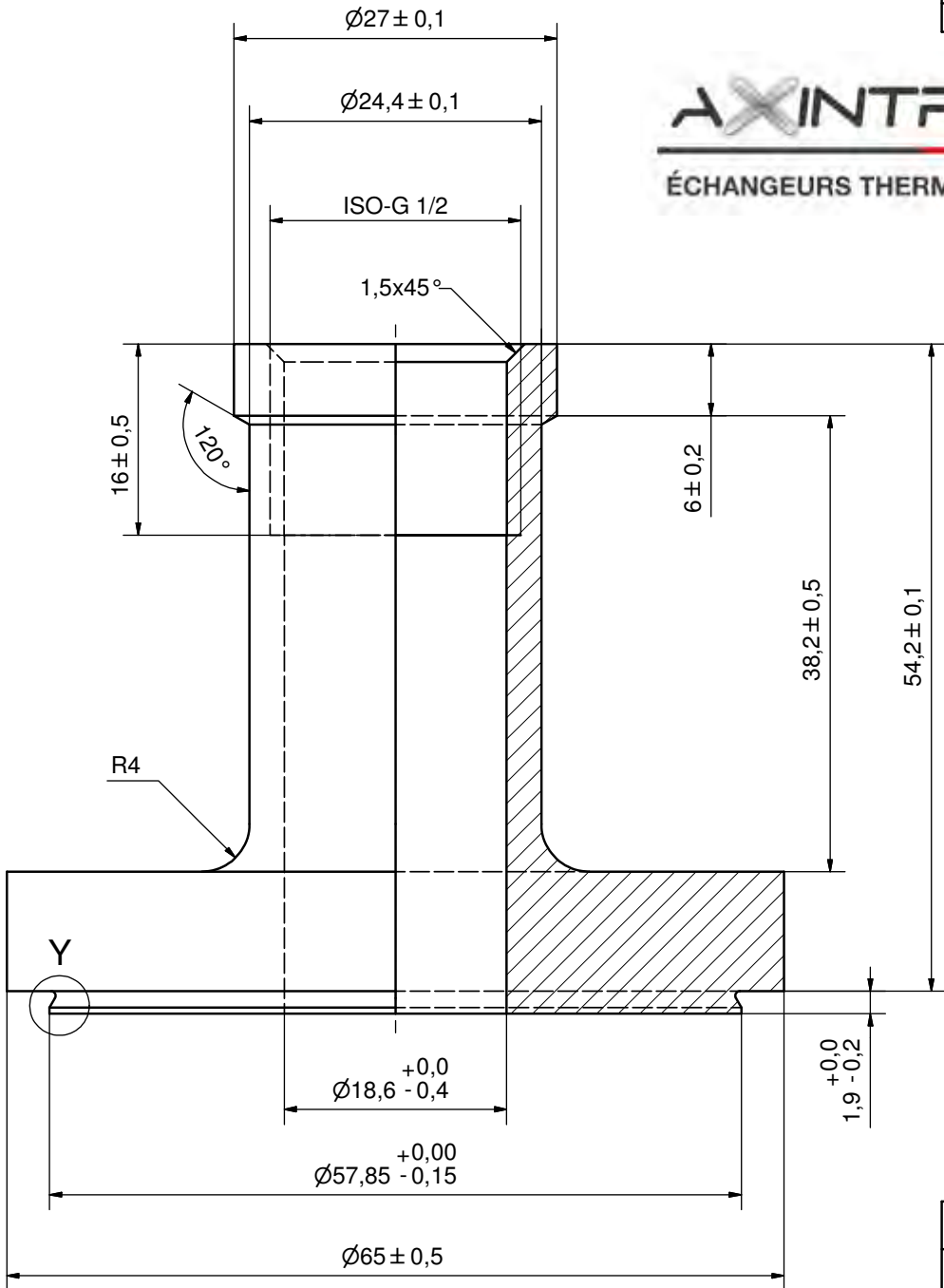
NOTE 2: [3] - CRITICAL/SPECIAL CHARACTERISTIC TO BE FOLLOWED

NOTE 1: DEBURR SHARP EDGES; MAX 0.4

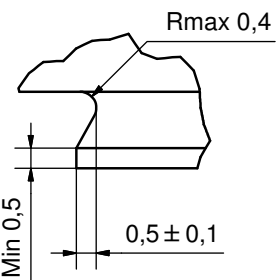
ACCORDING TO MQS
MATERIAL

Drawn miguser	Checked PDM	Approved PDM	Created Date 1994-06-10	General geometrical tolerancing ISO 2768: mK	General surface finish R_a : 3.2	Scale -	Paper size A3
			Title SOLDER 42U				
			Article number 45570	Design Type CD	Drawing number CD000159	Revision 08	Sheet 1 (1)

Rev No.	Alteration	Date	Checked	Approved
5	ADDED DEBURR & MATERIAL INFO	2009/0727	AP	PDM



Y (8:1)

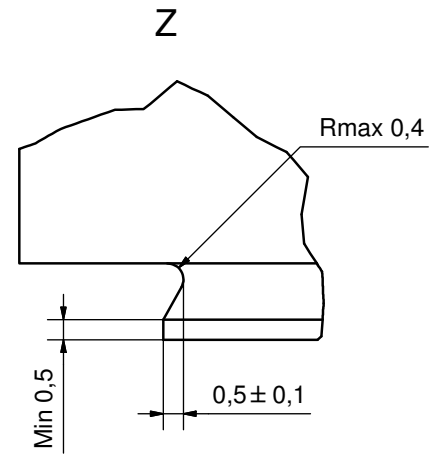
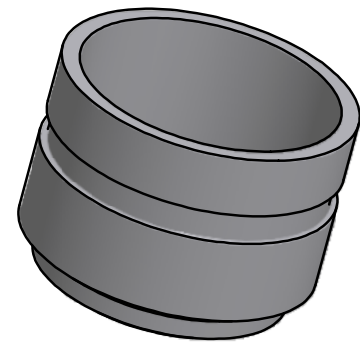
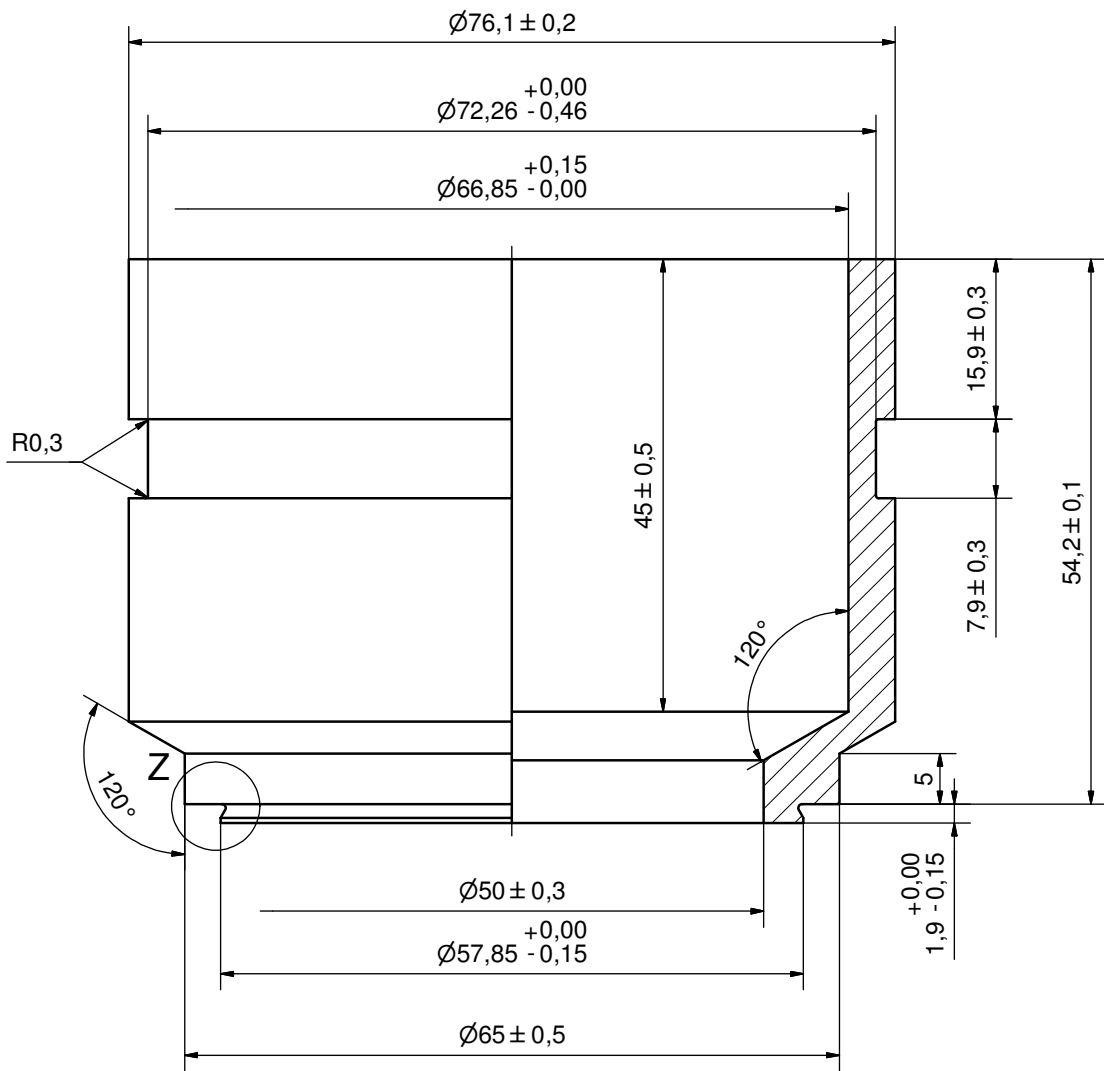


DEBURR SHARP EDGES; MAX 0,4

ACCORDING TO MQS
MATERIAL

Drawn JA	Checked -	Approved -	Created Date 1998-04-22	General geometrical tolerancing ISO 2768 m	General surface finish R_a 3.2	Scale 5:2
			Title ISO-G 1/2 INT			
Article number -			Drawing number CD000373		Revision 5	Sheet 1 (1)

Rev No.	Alteration	Date	Checked	Approved
1	ADDED DEBURR AND MATERIAL INFO	2009-07-30	MA	PDM



© Company Confidential, Property of SWEP International AB



DEBURR SHARP EDGES; MAX 0,4

ACCORDING TO MQS
MATERIAL

Drawn	Checked	Approved	Created Date	General geometrical tolerancing ISO 2768	General surface finish R_a	Scale
THE	PDM	PDM	2005-11-08	m	3.2	2:1
			VIC 3 OD			
Article number		Drawing number		Revision	Sheet	
-		CD000772		1	1 (1)	