

V250ASHx100/1P-NSC-H 28U+66.8+2x2 1/2" (54)

avec studbolts 1000181 et support 28561

Code : 03447228.0

Fiche technique et plans

V250AS

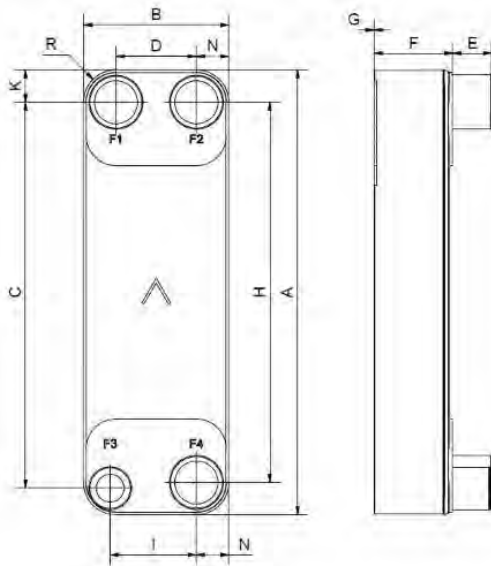
Notre modèle V250AS est un évaporateur à haut rendement spécialement développé pour les chillers réversibles refroidis à l'eau et à l'air. Ses ports de grande taille et l'asymétrie de ses plaques permettent de développer une gamme opérationnelle de 80 à 250 kW. La conception de nos plaques AsyMatrix® améliore les échanges de chaleur, réduit les pertes de charges et la charge du réfrigérant.



Spécifications de base

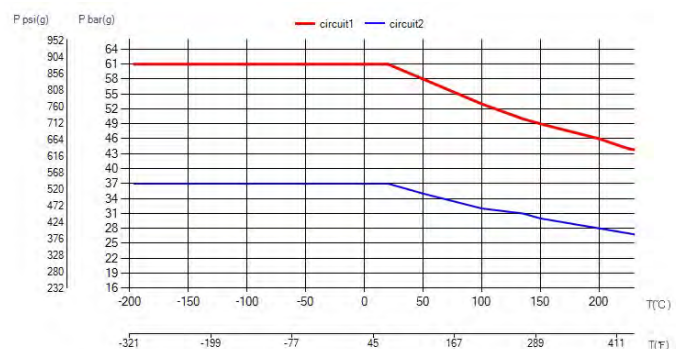
Nombre de plaques max. (NoP)	250
Débit volumétrique max.	62 m ³ /h (272.98 gpm)
Volume du canal	0.172/0.202 dm ³ (0.0061/0.0071 ft ³)
Matières	Plaques en acier inoxydable 316, plaques de recouvrement en acier inoxydable 304, brasage cuivre
Poids sans les connexions	8.40+(0.3495*NoP) kg 18.52+(0.771*NoP) lb
Taille la taille des Particules (mm)	0,8

Les dimensions standard



#	MM	IN
A	620	24.41
B	202	7.95
C	538	21.18
D	112	4.41
F	14,00+1,91*(NoP)	55.12+7.52*(NoP)
G	0	0
H	530	20.87
I	120	4.72
K	45	1.77
N	45	1.77
R	45	1.77
E_1	27	1.06

PED pression / température



AXINTRA

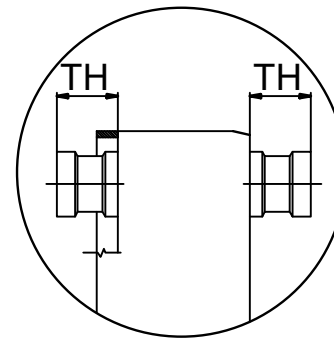
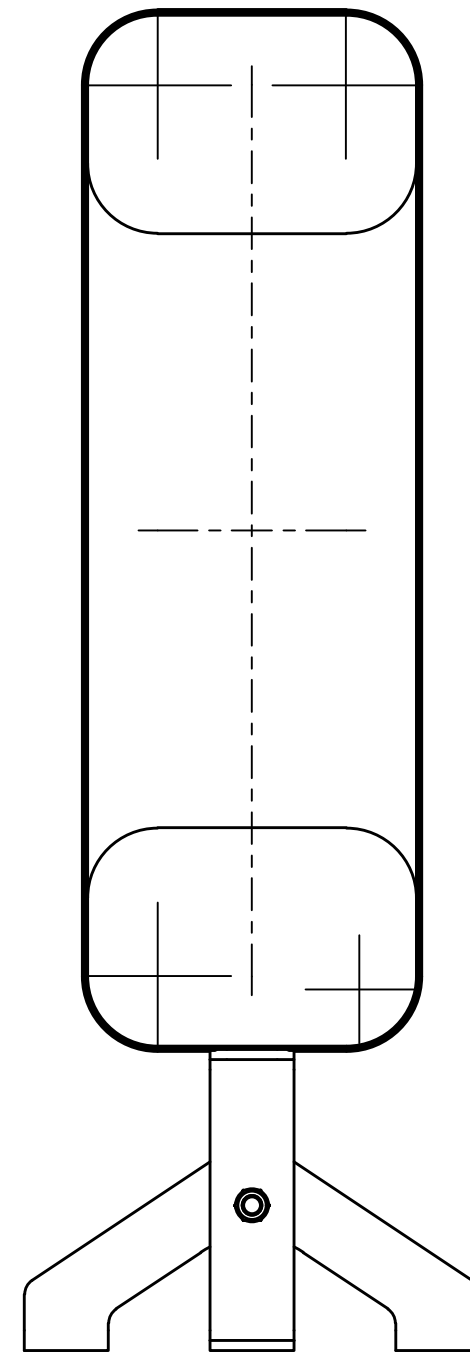
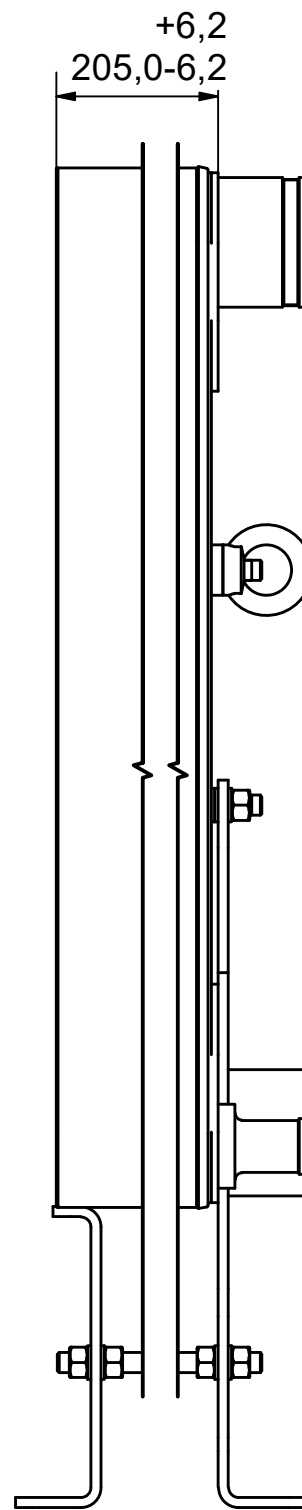
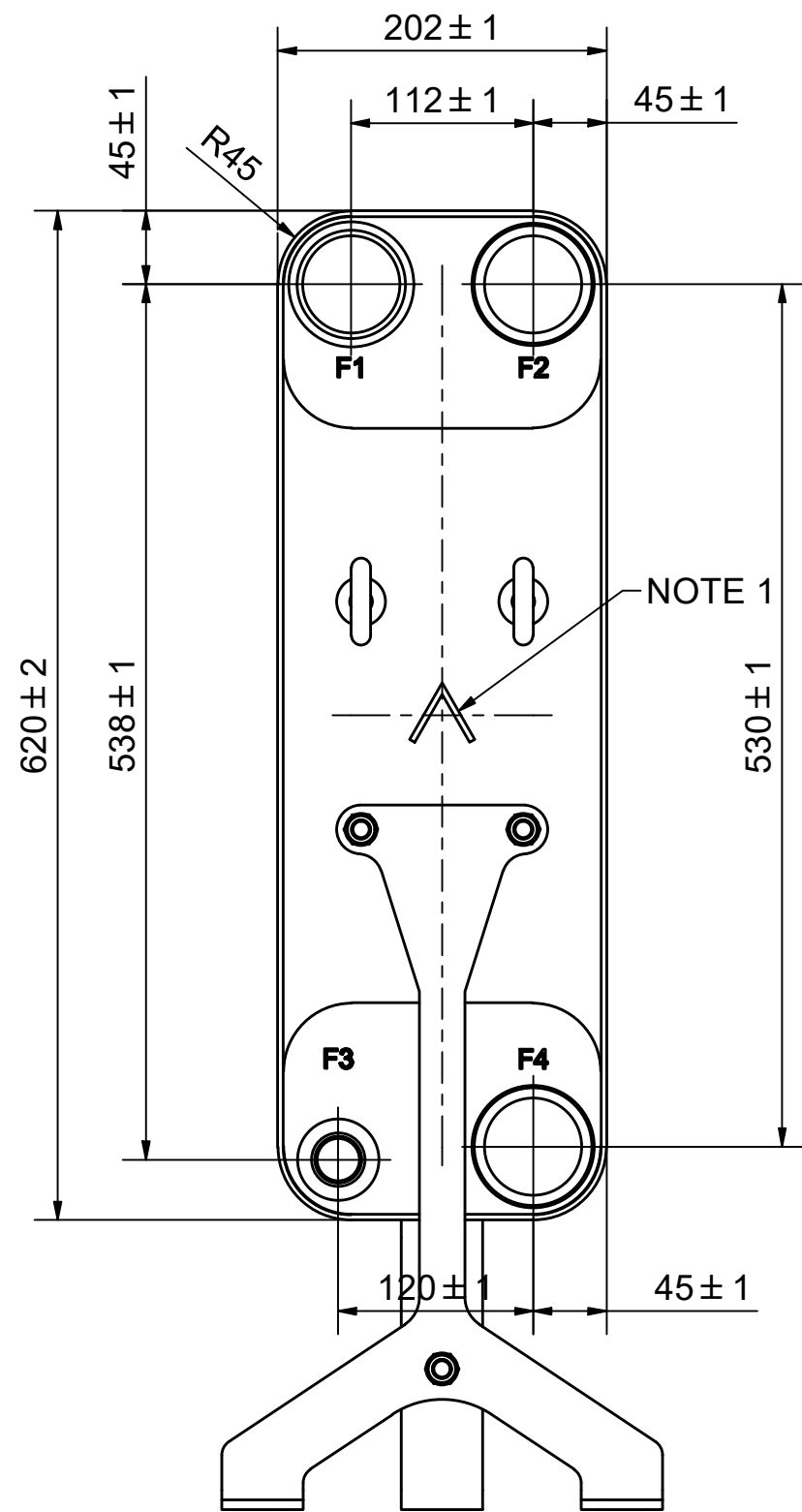
ÉCHANGEURS THERMIQUES

www.axintra.com
tel : +33 2 98 16 07 22 - contact@axintra.com

V250ASH/1P-NSC-H

SWEP
A DOVER COMPANY

© Company Confidential, Property of SWEP International AB




NOTE 1 ALTERNATE MARKING: STICKER OR STAMP

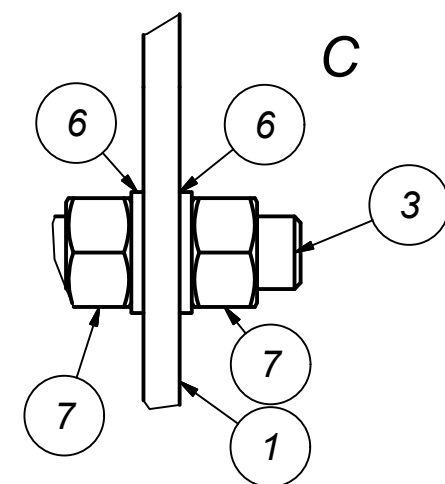
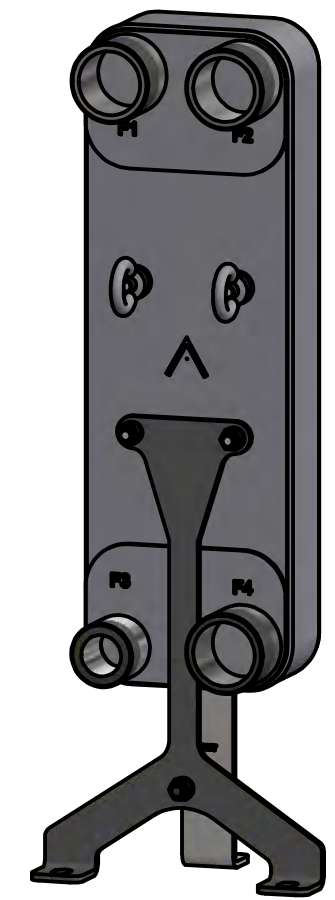
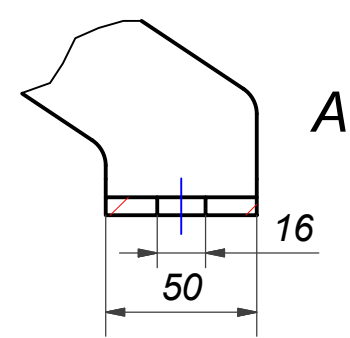
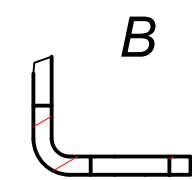
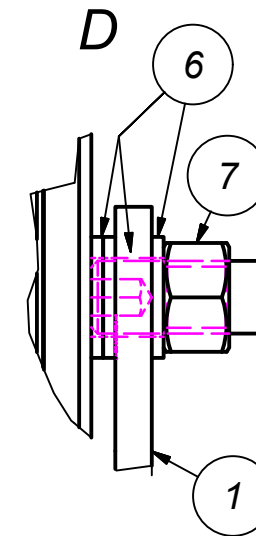
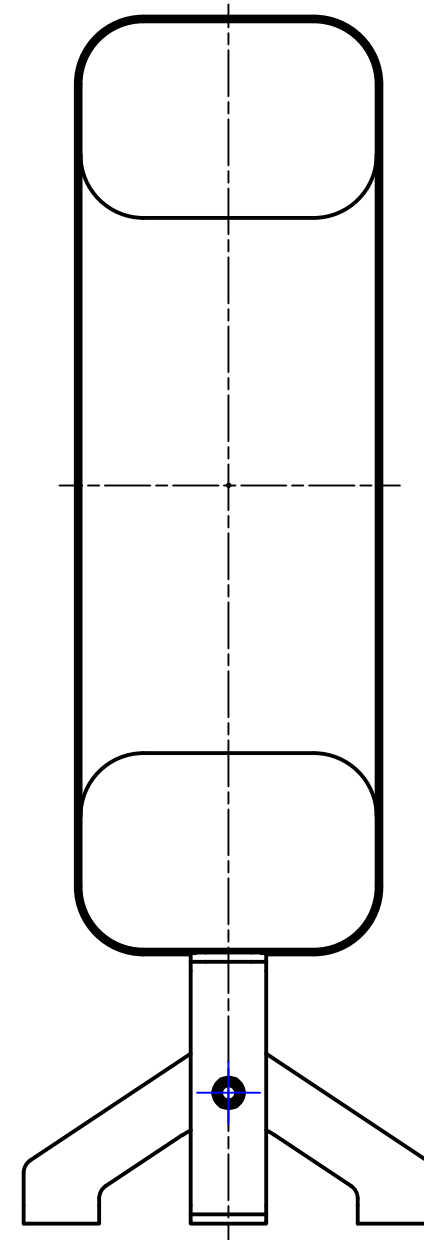
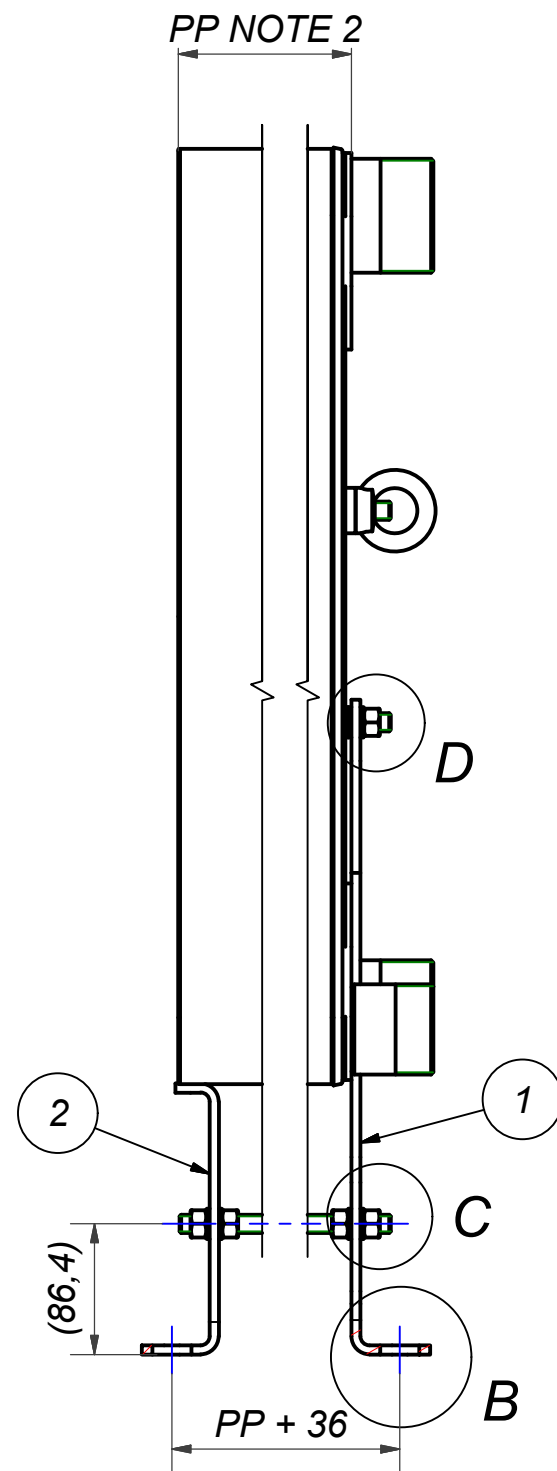
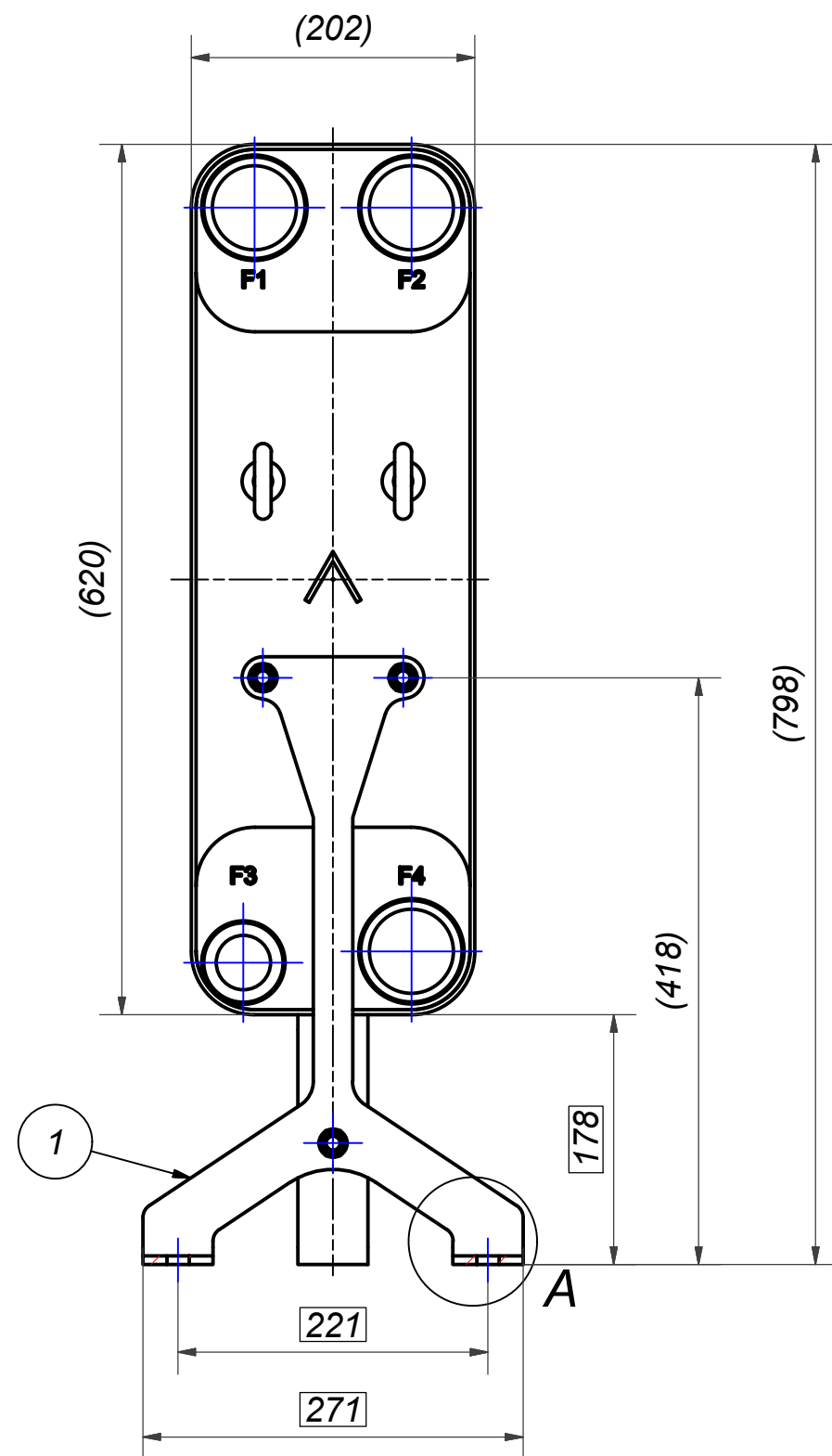
F4	45311	ISO-G 2 1/2 A, TH = 54,2	CD000051
F3	30105	SOLDER 28U, TH = 54,2	CD000608
F2	45311	ISO-G 2 1/2 A, TH = 54,2	CD000051
F1	45309	SOLDER ø66,85, TH = 54,2	CD000114
F	28561	B250AS SUPPORT LEG	00072671_2
F	1000181	250/250AS BOLT LOC F 4x C140x100	00066361_1



Pos	Article No	Title / Denomination, code, material, dimension etc	Drawing No./ref	Pos	Article No	Title / Denomination, code, material, dimension etc	Drawing No./ref
-----	------------	---	-----------------	-----	------------	---	-----------------

Title V250ASHx100/1P-NSC-H 28U+66.8+2x2 1/2"			
 A DOVER COMPANY		Created Date 2024-07-23	Created By AU
		Article/Configuration number 03447228.0	Drawing number AU00054050_03447228.0

Rev No	Alteration	Date	Checked	Approved
00	UPDATED NOTE 1, ADD F SIDE TO TITLE - ECN 000192	2021-07-27	skimi	PDM



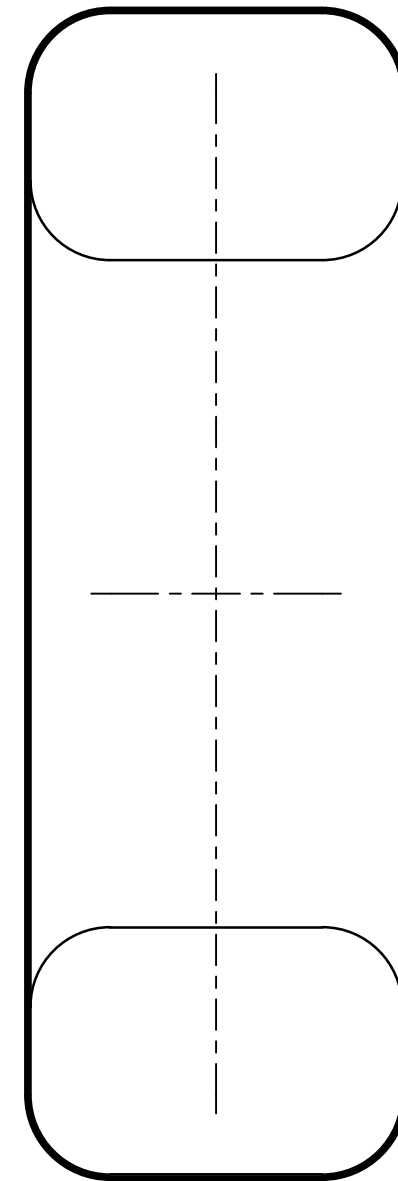
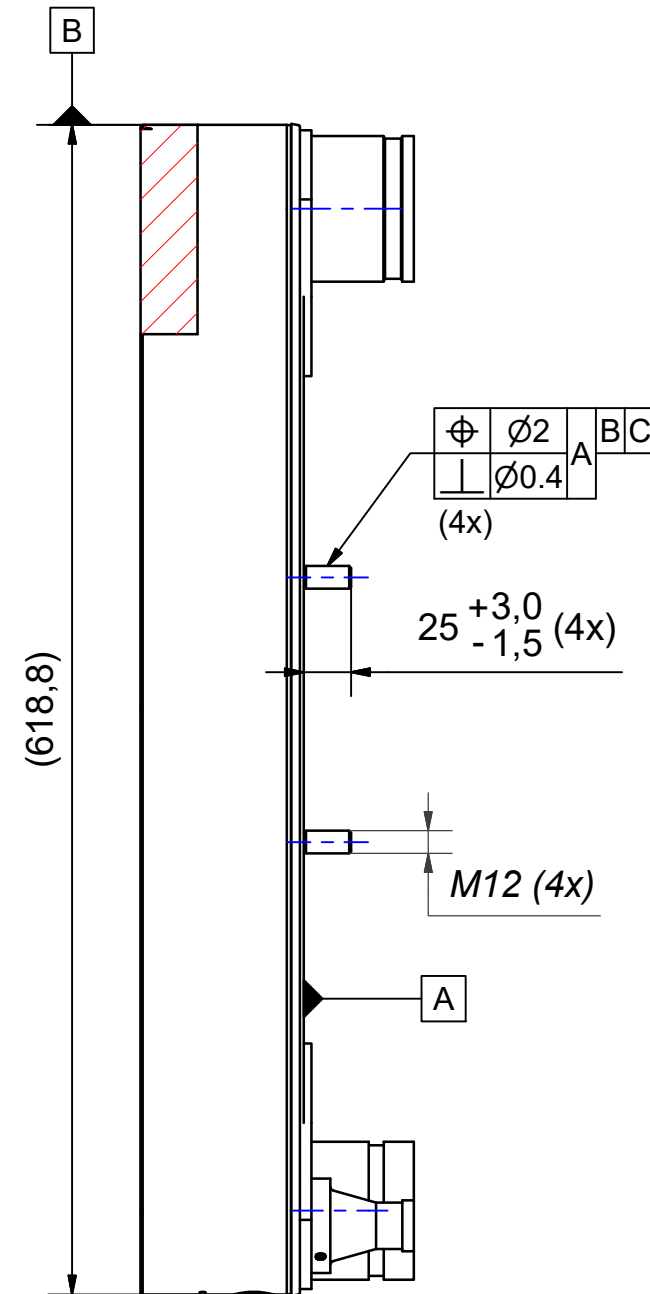
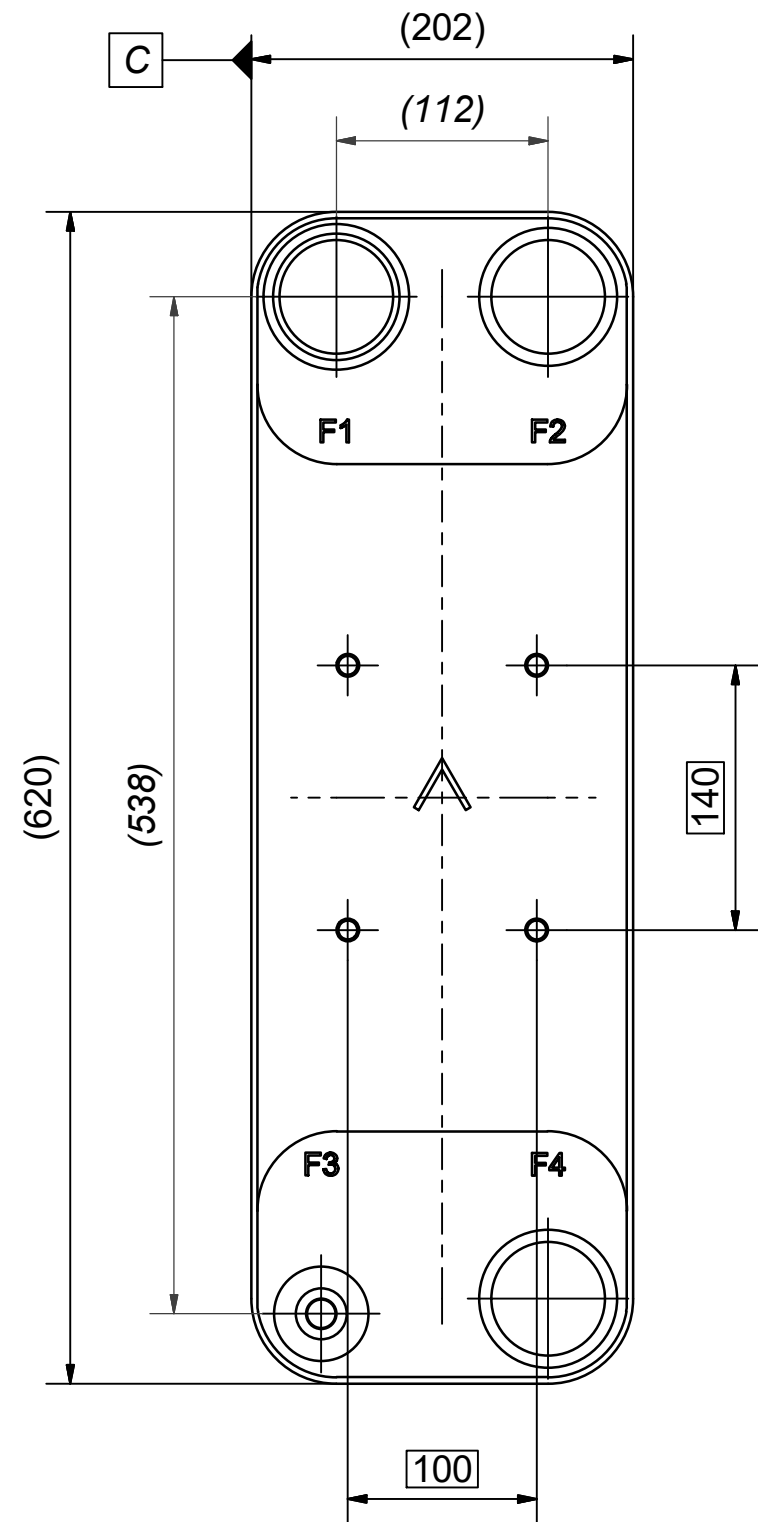
PP = 14+(1,91xNP)
NP = NO. OF PLATES

NOTE 2: PP MEASUREMENT AND TOLERANCES ACC TO AZPM0055
NOTE 1: REQUIRES STUD BOLT LOC. 4xM12x25 C140x100
F SIDE : USE 100181

Item	QTY	Description	Drawing / Article
7	6	NUT DIN 934 - M12	45948
6	10	WASHER 13x24x2,5	CC000843 / 45524
5	2	WASHER	CC000059 / 45562
4	2	LIFTING EYE DIN 582-M12	45728
3	1	THREADED BAR M12	CC000168
2	1	B35/45/50/57 SUPPORT LEG	CC000165 / 28027
1	1	B185/B250 SUPPORT LEG	00032099

Drawn	Checked	Approved	Created Date	General geometrical tolerancing ISO 2768:	General surface finish R_a :	Scale	Paper size
laja	PDM	PDM	2017-01-18	-	-	-	A3
				Title B250AS COMPLETE OPTION SET F SIDE			
				Article number CG	Design Type 00072671	Drawing number 00	Revision 1 (1)

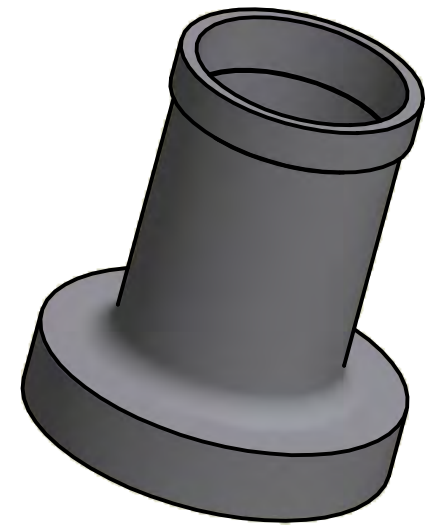
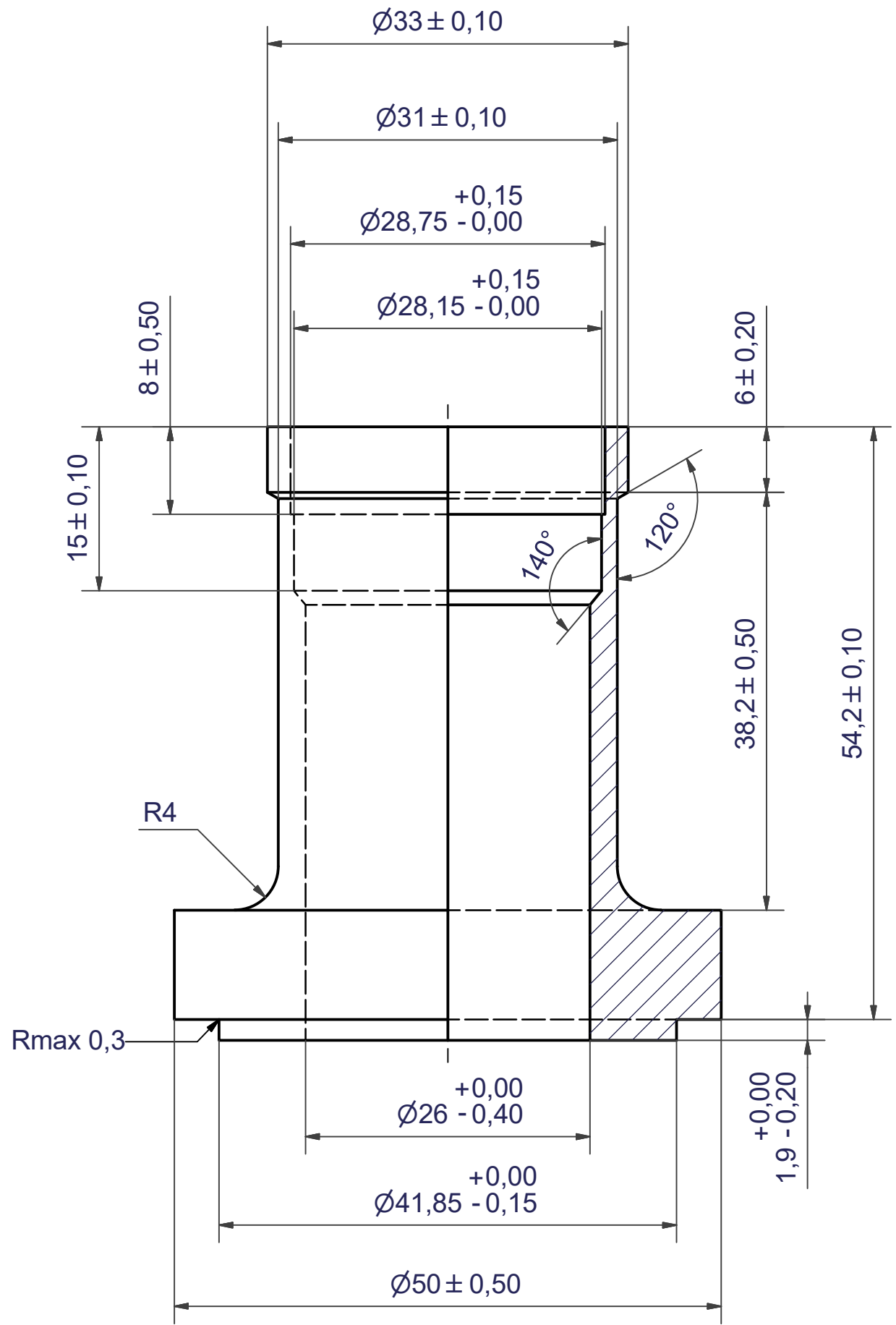
Rev No	Alteration	Date	Checked	Approved
00				PDM



© Company Confidential, Property of SWEP International AB

1	4	STUD BOLT M12 x 25, ART. NO. 45987				M12x25		
Item	QTY	Description				Drawing / Article		
Drawn	Checked	Approved	Created Date	General geometrical tolerancing ISO 2768:	General surface finish R_a :		Scale	Paper size
11021505	PDM	PDM	2016-05-13				-	A3
 A DOVER COMPANY						Title		
						250/250AS STUDBOLT LOC. F 4X C140x100		
Article number		Design Type	Drawing number	Revision	Sheet			
1000181		CG	00066361	00	1 (1)			


Rev No.	Alteration	Date	Checked	Approved
2	ADDED DEBURR & MATERIAL INFO	2009/07/29	AP	PDM



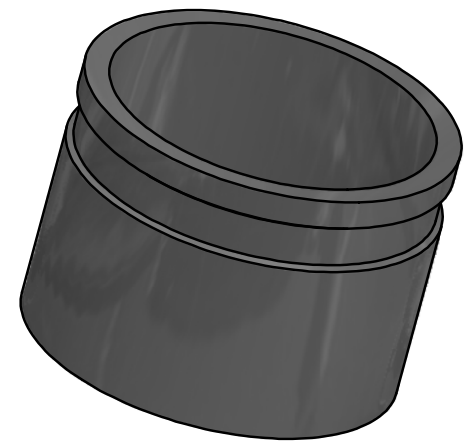
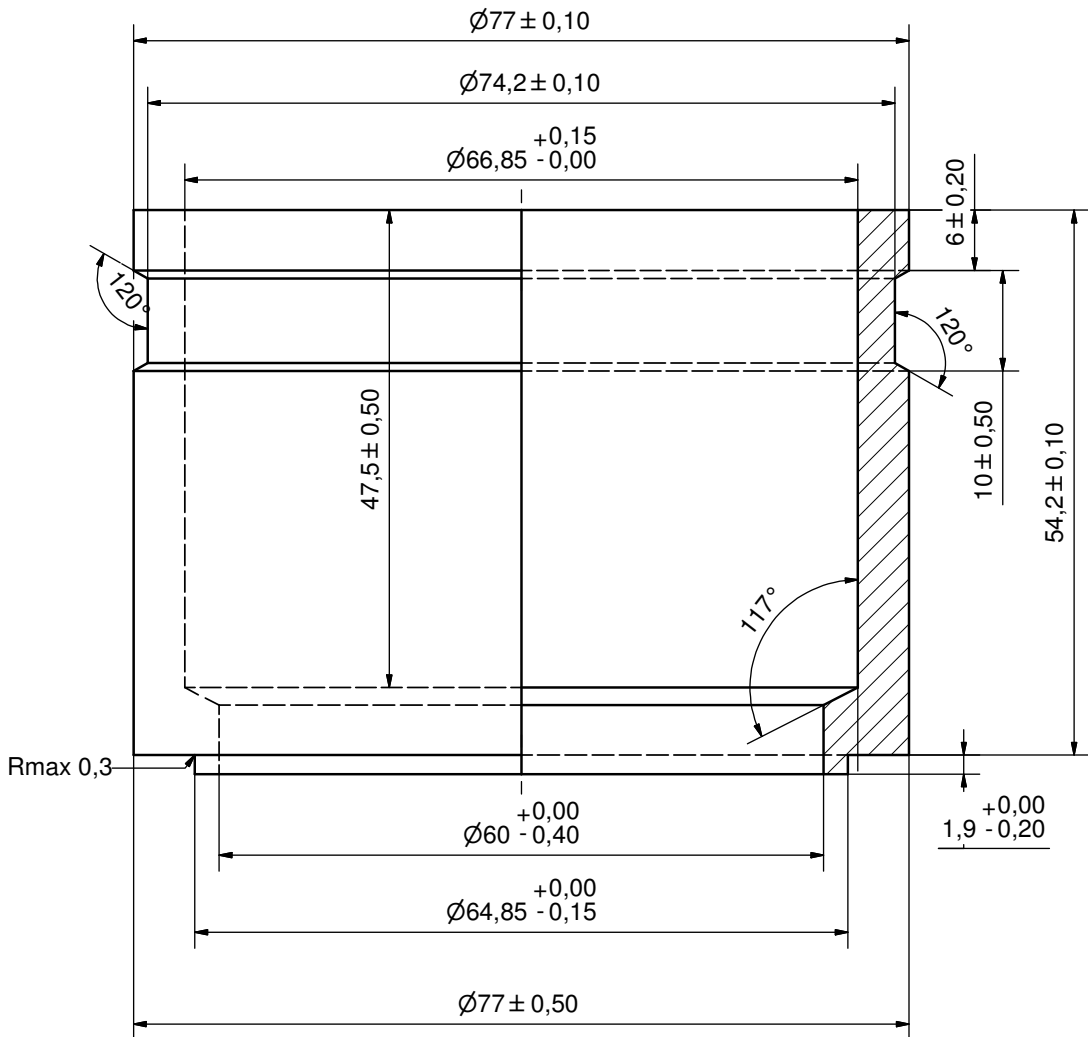
© Company Confidential, Property of SWEP International AB

DEBURR SHARP EDGES; MAX 0,4

ACCORDING TO MQS
MATERIAL


Drawn miguser	Checked JA	Approved PNI	Created Date 2002-11-18	General geometrical tolerancing ISO 2768 m	General surface finish R_a 3.2	Scale 2:1
			Title SOLDER 28U			
A DOVER COMPANY			Article number	Drawing number	Revision	Sheet
			CD000608	02	1 (1)	

Rev No.	Alteration	Date	Checked	Approved
10	ADDED DEBURR AND MATERIAL INFO	2009/07/29	RJ	PDM

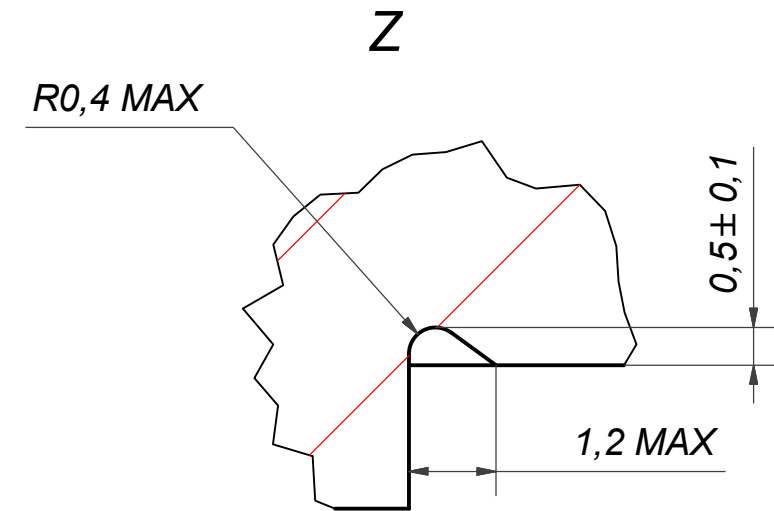
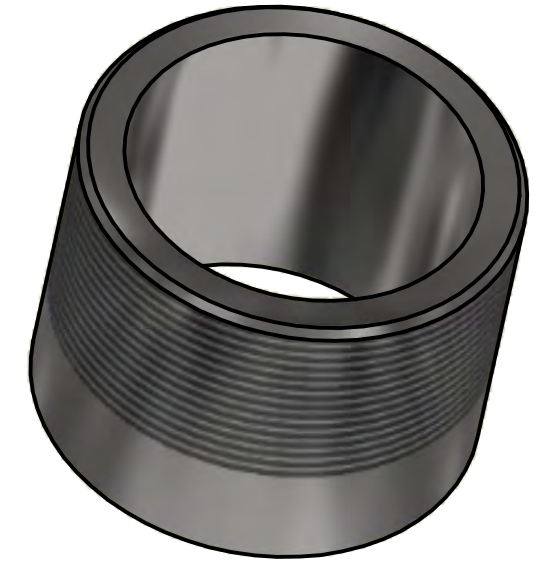
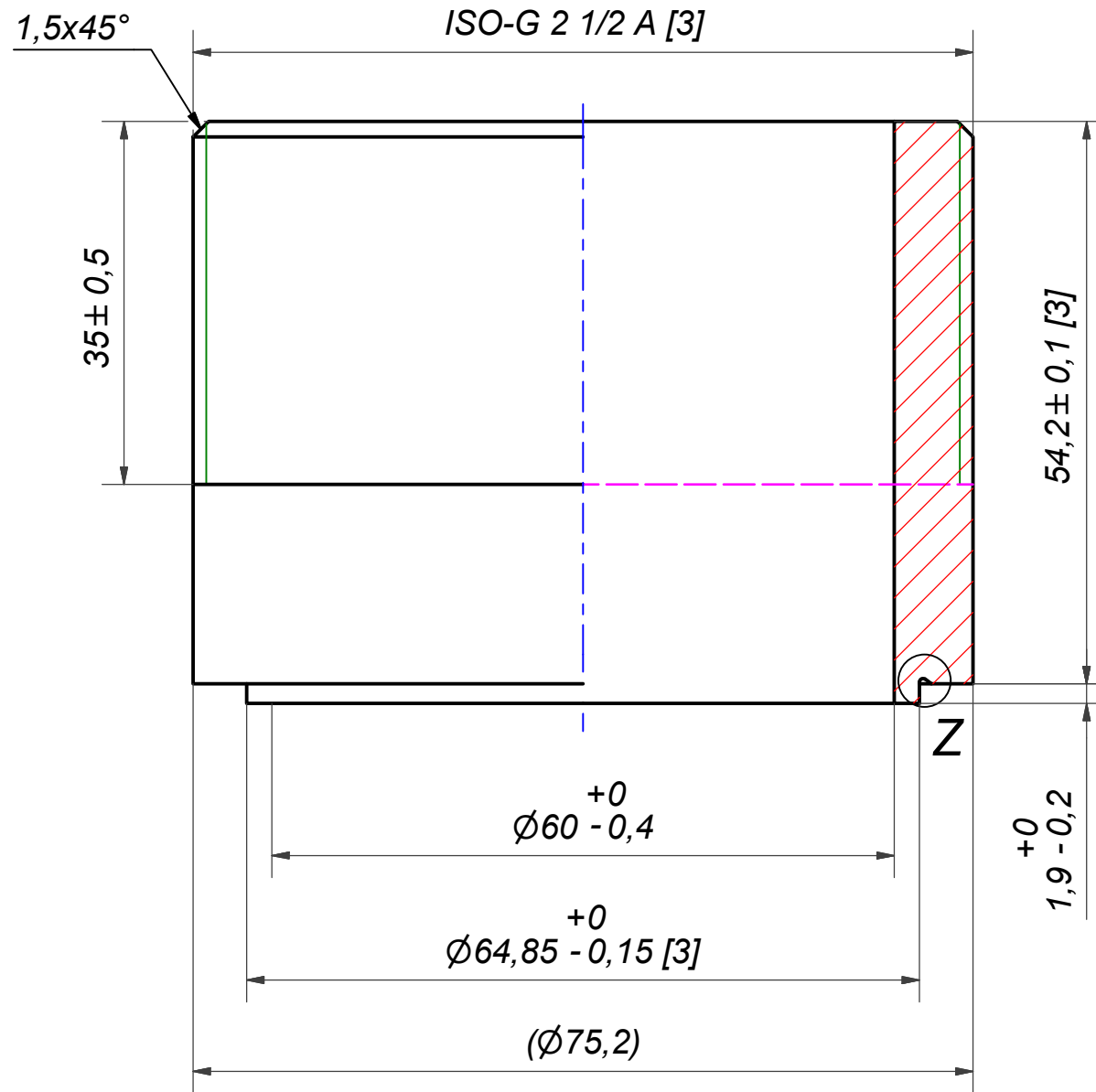


DEBURR SHARP EDGES; 0.4MAX

ACCORDING TO MQS
MATERIAL


Drawn	Checked	Approved	Created Date	General geometrical tolerancing ISO 2768	General surface finish Ra	Scale
EG	TP	VP	1991-03-15	m	3.2	-
			SOLDER $\varnothing 66,85$			
Article number		Drawing number		Revision	Sheet	
-		CD000114		10	1 (1)	

Rev No	Alteration	Date	Checked	Approved
10	ECN-000223:update of thread designation	2022-02-10	10083926	PDM



NOTE 2: [3] - CRITICAL/SPECIAL CHARACTERISTIC TO BE FOLLOWED
NOTE 1: DEBURR SHARP EDGES; MAX 0.4

ACCORDING TO MQS
MATERIAL

Drawn	Checked	Approved	Created Date	General geometrical tolerancing ISO 2768:	General surface finish R_a :	Scale	Paper size
miguser	PDM	PDM	1991-03-15	mK	3.2	-	A3
 A DOVER COMPANY			Title ISO-G 2 1/2 A				
			Article number	Design Type	Drawing number	Revision	Sheet
	CD	CD000051	10	1 (1)			