

V200T

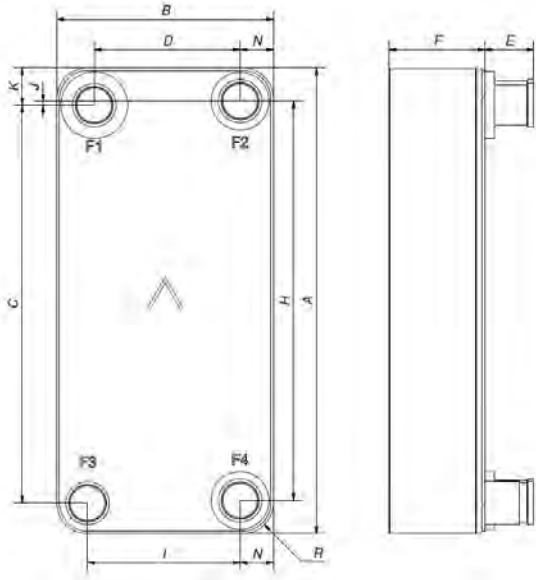
Le V200T est un évaporateur qui offre une efficacité élevée avec de nombreux réfrigérants. Il combine un format compact et un agencement de plaques spécialement développé pour créer un échangeur thermique extrêmement efficace. Le V200T est le choix idéal pour les chillers, les pompes à chaleur et les économiseurs.



Spécifications de base

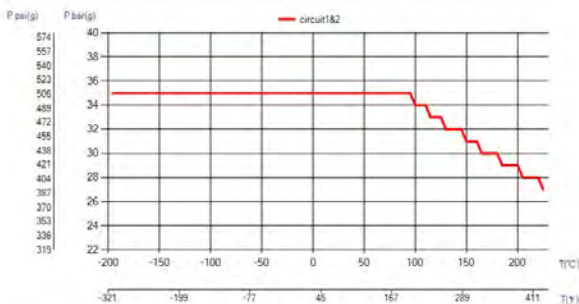
Nombre de plaques max. (NoP)	250
Débit volumétrique max.	43,7 m³/h (30.82 gpm)
Volume du canal	0.241/0.241 dm³ (0.0085/0.0085 ft³)
Matières	Plaques en acier inoxydable 316/316L, brasage cuivre
Poids sans les connexions	9.45+(0.45*NoP) kg 20.84+(0.992*NoP) lb
Taille la taille des Particules (mm)	1

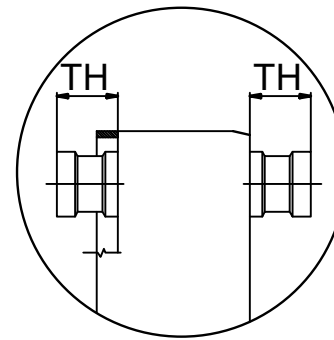
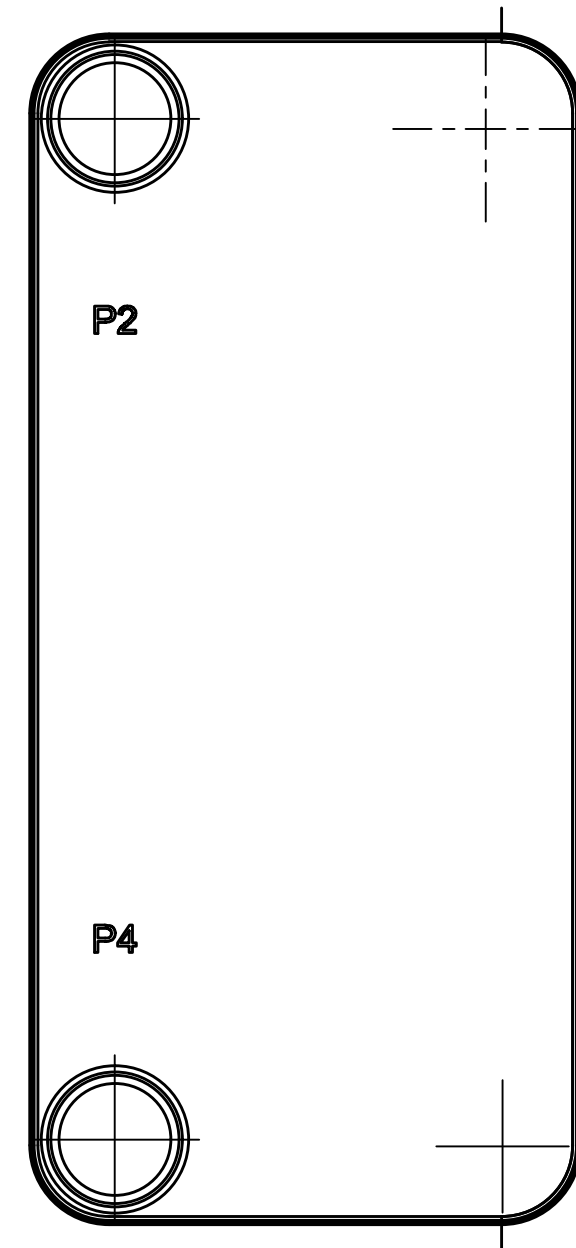
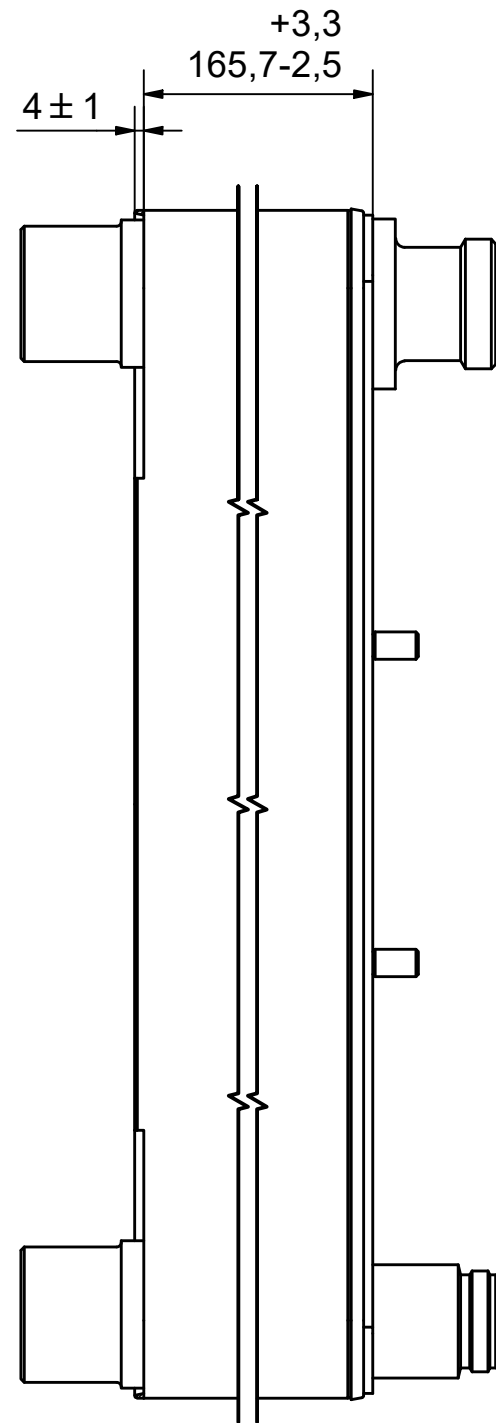
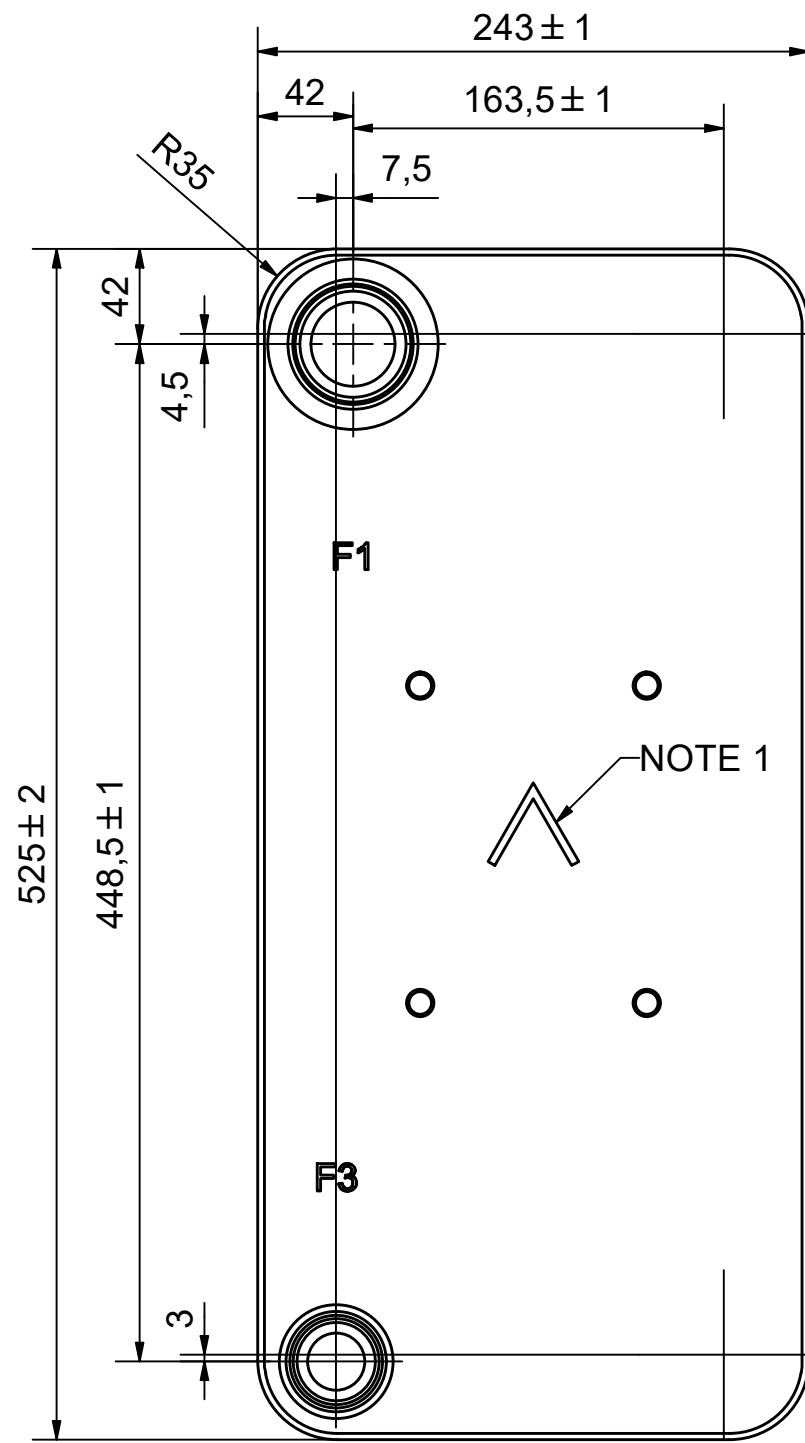
Les dimensions standard



#	MM	IN
A	525	20.67
B	243	9.57
C	448.50	17.66
D	163.50	6.44
F	10,00+2,29*(NoP)	0.39+0.09*(NoP)
G	4	0.16
H	450	17.72
I	171	6.73
J	4.50	0.18
K	42	1.65
N	37.50	1.48
R	35	1.38
E_1	54	2.13
E_2	27	1.06


PED pression / température

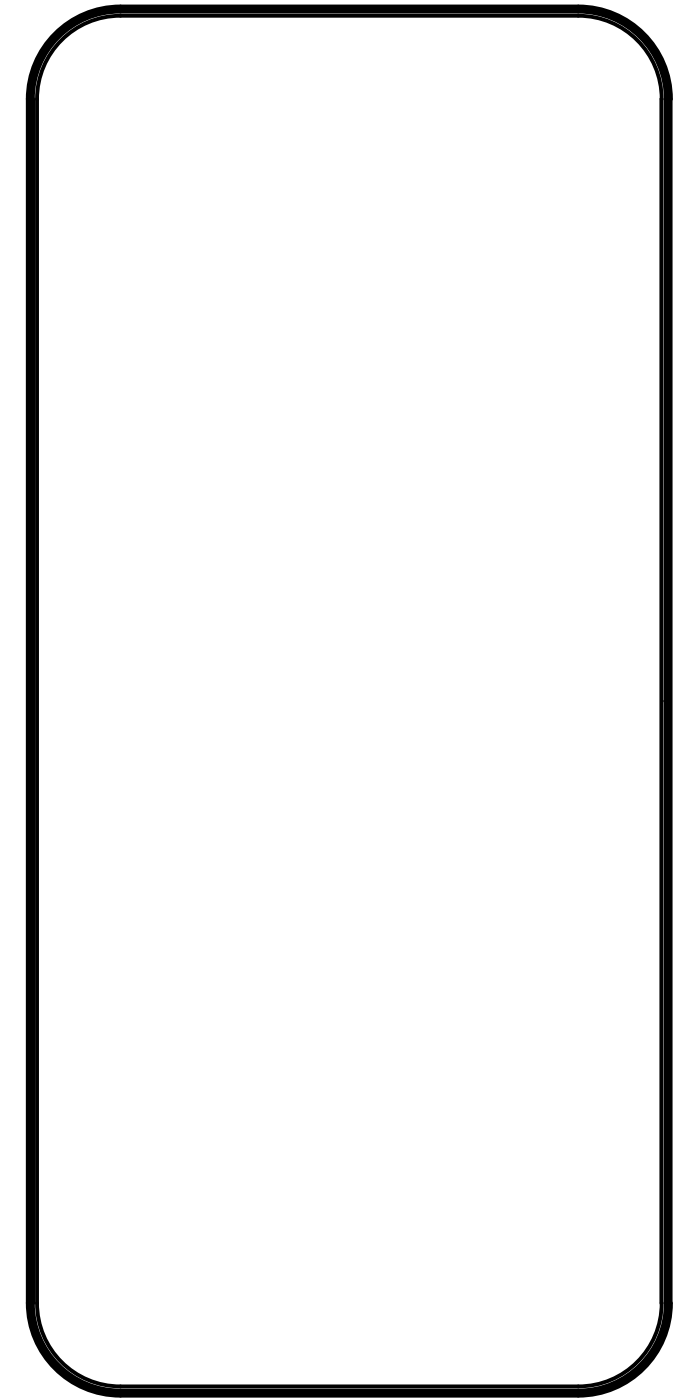
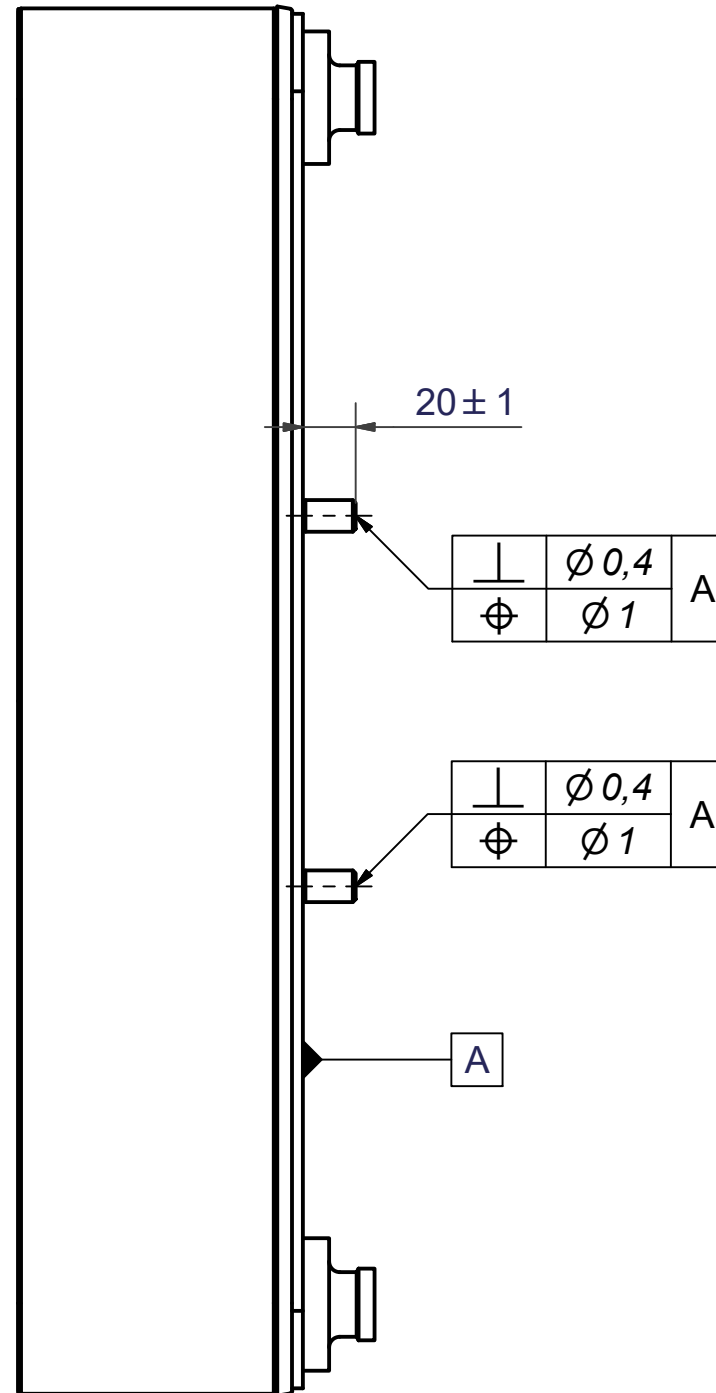
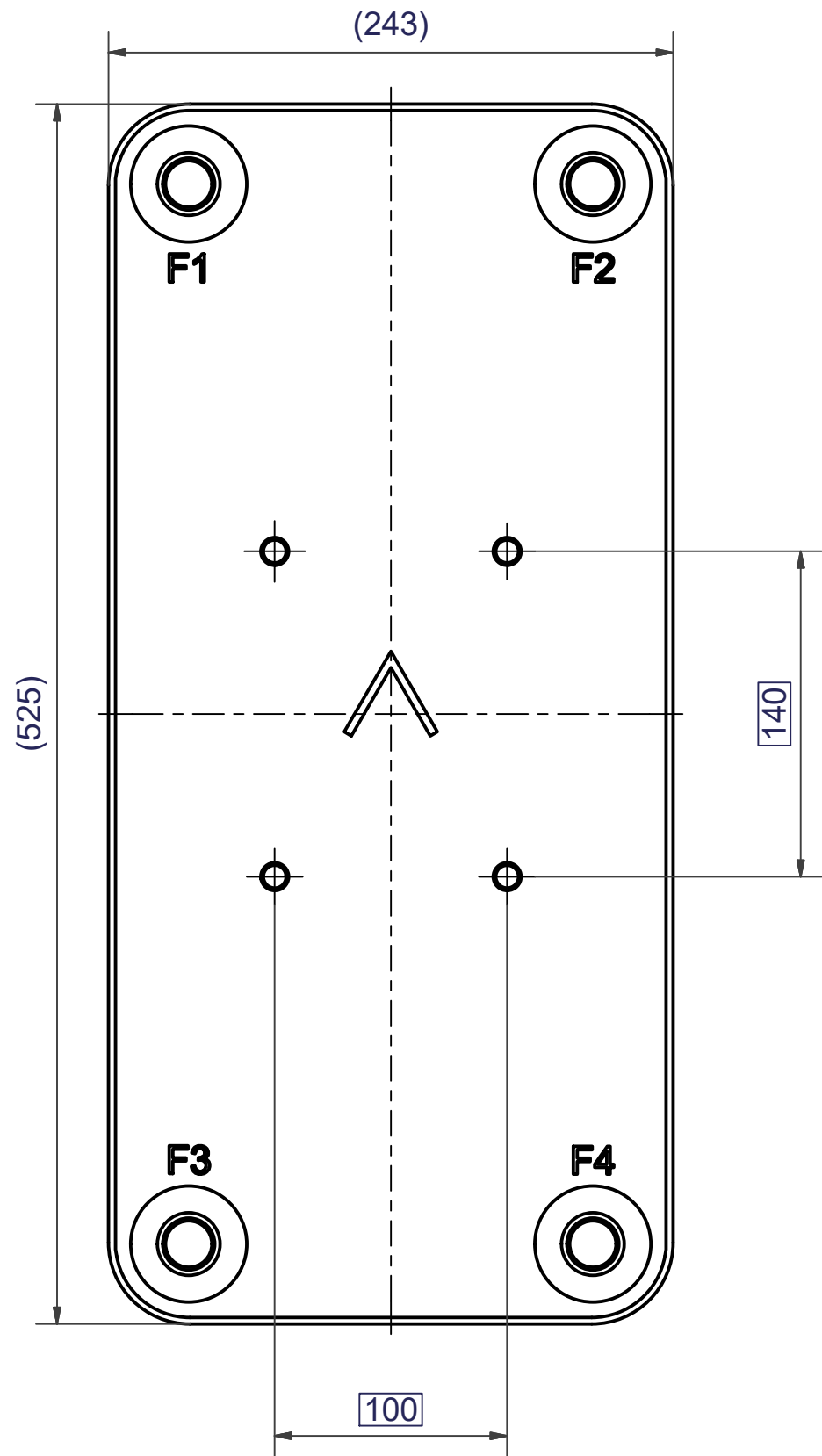




NOTE 1 ALTERNATE MARKING: STICKER OR STAMP

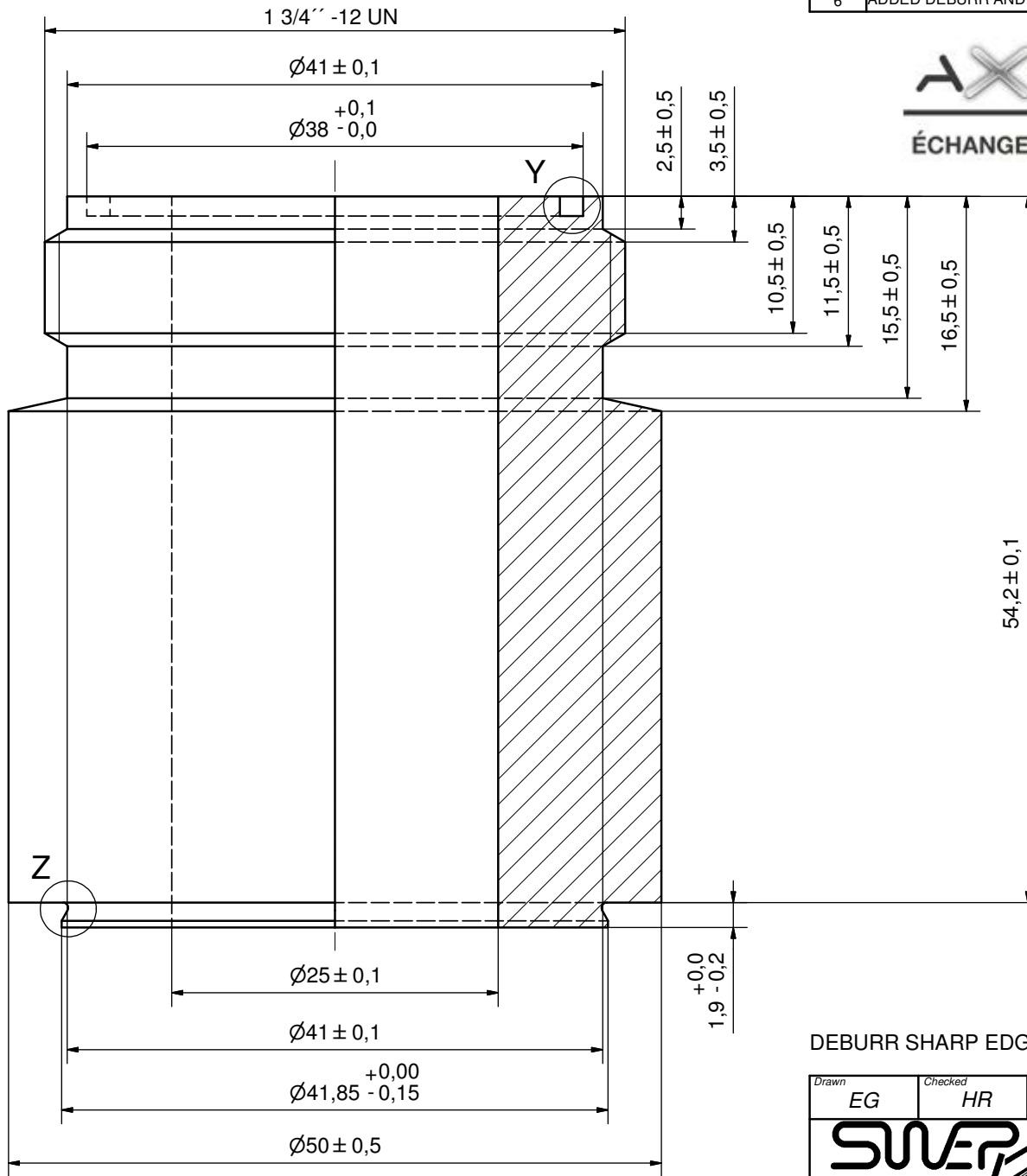
Pos	Article No	Title / Denomination, code, material, dimension etc	Drawing No./ref	Pos	Article No	Title / Denomination, code, material, dimension etc	Drawing No./ref
F3	45544	ROVALOCK 1 3/4 -12 UN, TH = 54,2	CD000143				
F1	32168	ROVALOCK 2 1/4, TH = 54,2	CD000655	P4	46101	ISO-G 2 A, TH = 54,2	CD000322
F	21118	B120T/50 BOLT LOC F 4x C140x100	CG450024	P2	46101	ISO-G 2 A, TH = 54,2	CD000322

Title V200THx68/1P-SC-S 1 3/4 "RL+2 1/4 "RL / 2x2"			
 A DOVER COMPANY		Created Date 2024-07-31	Created By AU
		Article/Configuration number 0128987.0	Drawing number AU00054883_0128987.0

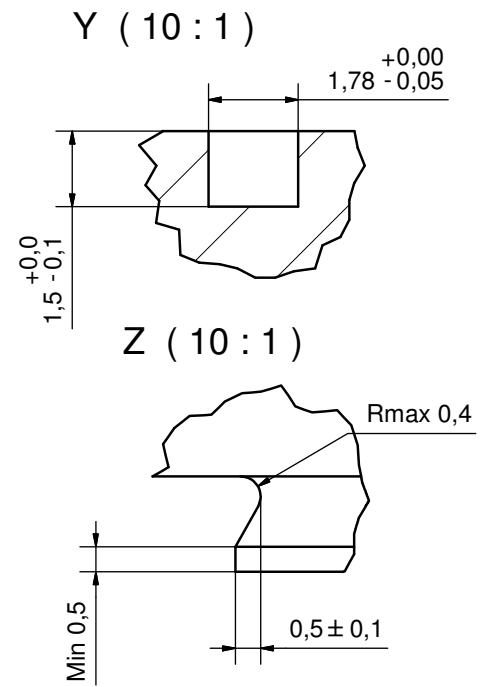


1	4	STUD BOLT M12x20 ART. NO. 45095	M12x20
IT	QTY	DESCRIPTION	Drawing No./Ref
lathe	PDM	PDM	2004-10-12
		General geometrical tolerancing ISO 2768: m	General surface finish R _a : 3.2
		1:1	
		B120T/50 BOLT LOC F 4x C140x100	
Article number 21118		Drawing number CG450024	
		Revision 00	
		Sheet 1 (1)	

Rev No.	Alteration	Date	Checked	Approved
6	ADDED DEBURR AND MATERIAL INFO	2009/07/29	RJ	PDM



AXINTRA
ÉCHANGEURS THERMIQUES

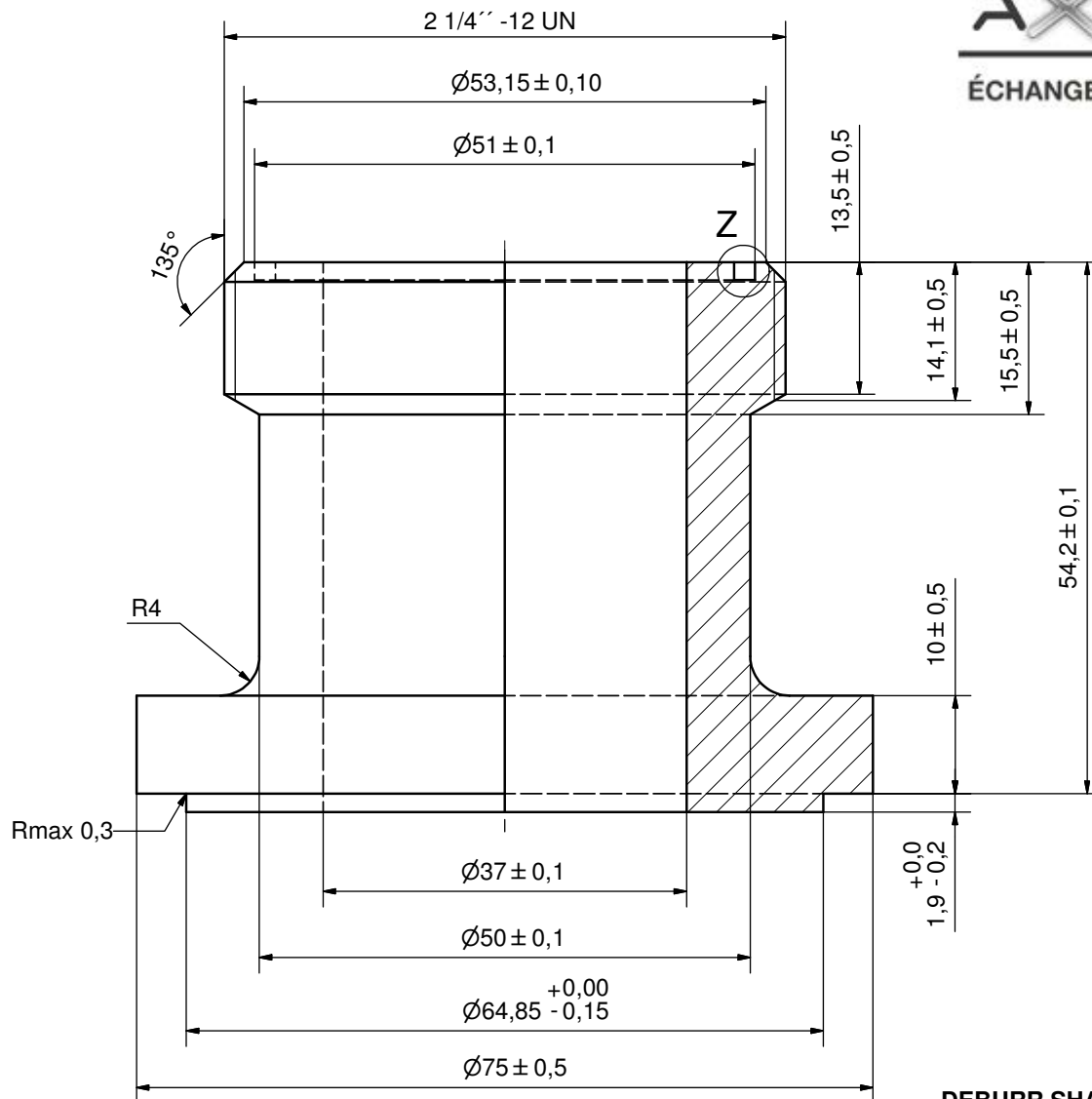
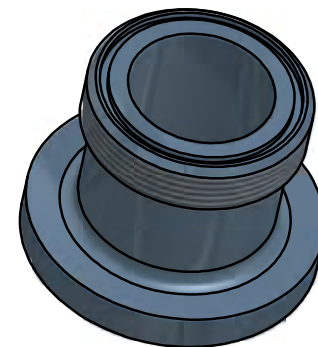


DEBURR SHARP EDGES; 0.4MAX

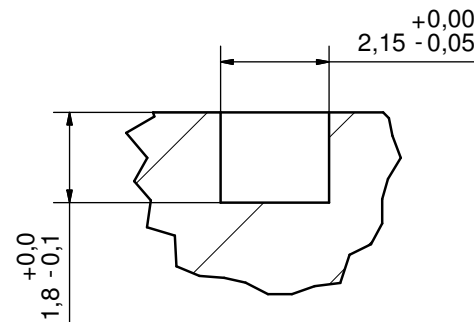
ACCORDING TO MQS
MATERIAL

Drawn EG	Checked HR	Approved BOS	Created Date 1994-01-18	General geometrical tolerancing ISO 2768 m	General surface finish R_a 3.2	Scale -
			Title ROTALOCK 1 3/4 -12 UN			
Article number -		Drawing number CD000143		Revision 6		Sheet 1 (1)

Rev No.	Alteration	Date	Checked	Approved
3	ADDED DEBURR & MATERIAL INFO	2009/07/29	AP	PDM



Z (10 : 1)



DEBURR SHARP EDGES; MAX 0,4

ACCORDING TO MQS
MATERIAL

Drawn THE	Checked JA	Approved STA	Created Date 2004-04-30	General geometrical tolerancing ISO 2768 m	General surface finish R_a 3.2	Scale 2:1
			Title ROTALOCK 2 1/4			
Article number -		Drawing number CD000655		Revision 3		Sheet 1 (1)

Rev No	Alteration	Date	Checked	Approved
05	ECN-000223: update of thread designation + critical char	2022-02-18	10083926	PDM

1,5x45°

ISO-G 2 A [3]

05

25 ± 0,5

44,2 ± 0,1

54,2 ± 0,1 [3]

R2

Z

Rmax 0,4

Min 0,5

0,5 ± 0,1

Z

Ø49,2⁺⁰ - 0,4

Ø57,85⁺⁰ - 0,15 [3]

05

1,9⁺⁰ - 0,2

Ø65 ± 0,5

AXINTRA

ÉCHANGEURS THERMIQUES

ACCORDING TO MQS

MATERIAL

Drawn miguser	Checked PDM	Approved PDM	Created Date 1997-02-17	General geometrical tolerancing ISO 2768: m	General surface finish R _a : 3.2		Scale -	Paper size A3
------------------	----------------	-----------------	----------------------------	--	--	--	------------	------------------

NOTE 2: [3] - CRITICAL/SPECIAL CHARACTERISTIC TO BE FOLLOWED

NOTE 1: DEBURR SHARP EDGES; MAX 0.4



Title ISO-G 2 A				
Article number	Design Type	Drawing number	Revision	Sheet
	CD	CD000322	05	1 (1)

© Company Confidential, Property of SWEPP International AB